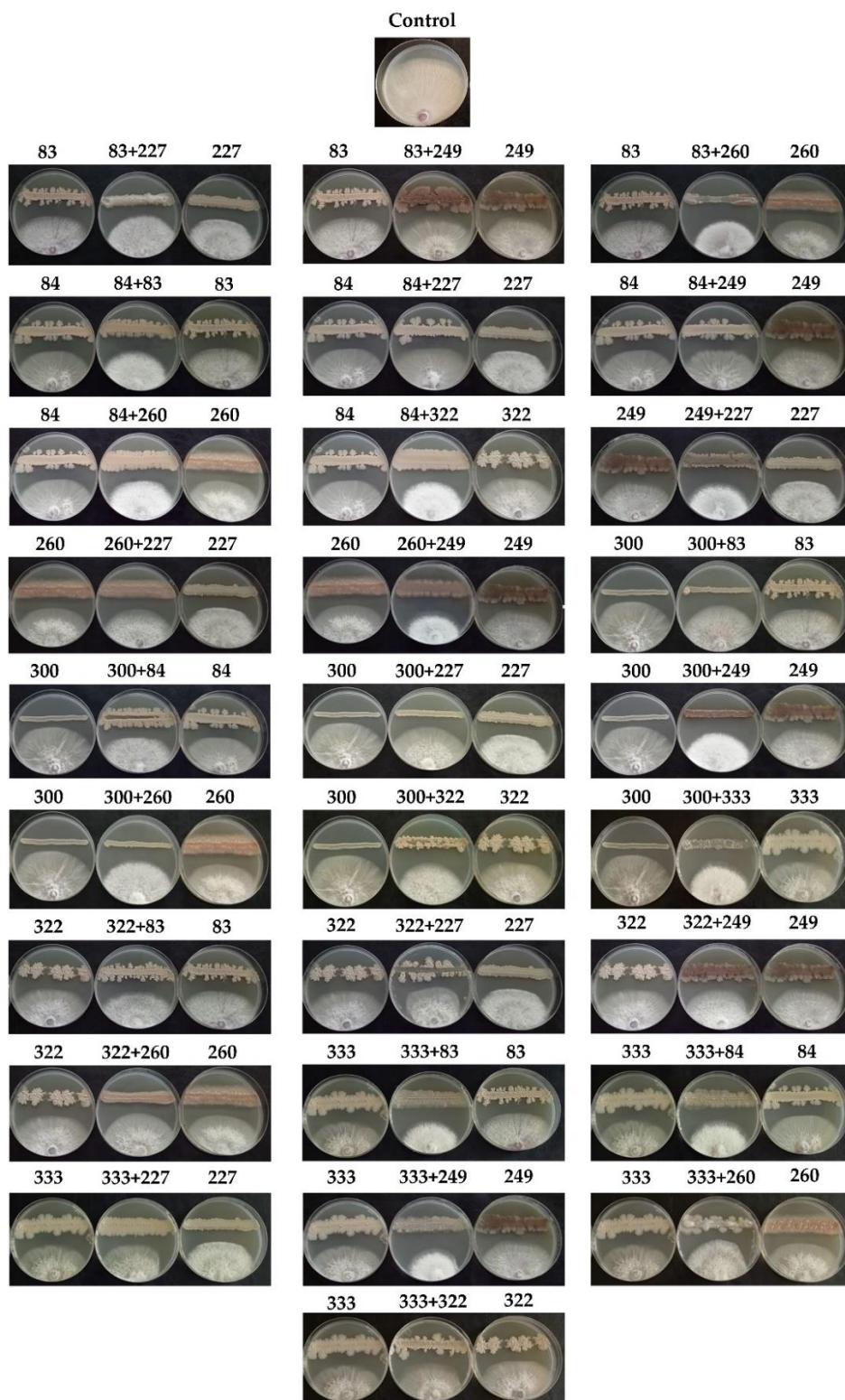
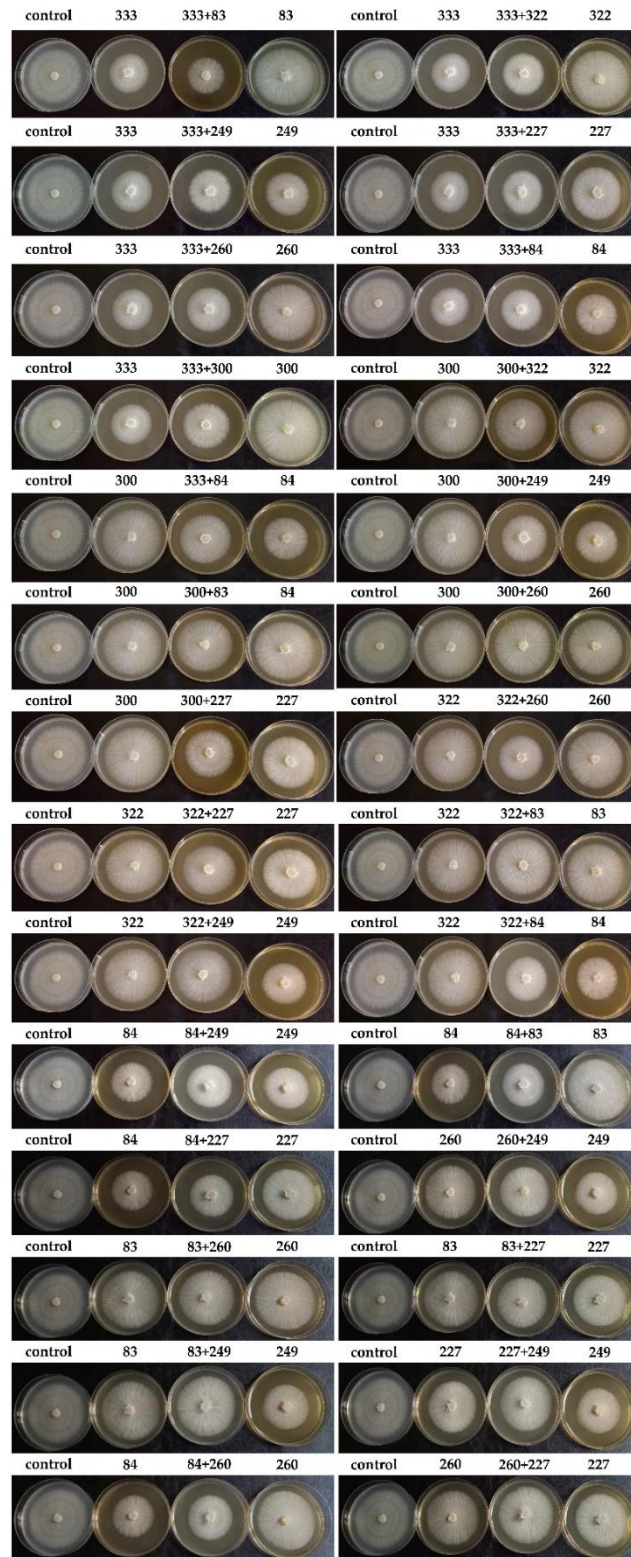


**Figure S1.** *In vitro* comparison test of the antifungal activity of bacterial strains against phytopathogenic fungi (*Fusarium solani*, *Phytophthora infestans*, *Fusarium graminearum*, and *Alternaria alternata*).



**Figure S2.** *In vitro* confrontation test of the antifungal activity of the combined bacterial strains against FOA1. A control Petri plate representative of FOA1 is shown above.



**Figure S3.** Inhibition of the growth of FOA 1 on PDA agar added to the cell-free culture supernatants of the bacterial strains, alone or combined.

Supplementary Table S1. Bacterial strains activity against *Fusarium albedinis* FOA.

<b>H.Rh.S: Healthy Rhizospheric Soil</b>	
Strains	Mean $\pm$ Standard Deviation
2	11.625 $\pm$ 0.81
10	11.735 $\pm$ 0.96
11	9.525 $\pm$ 1.85
21	12.5 $\pm$ 0.70
27	14.28 $\pm$ 0.00
29	13.705 $\pm$ 0.92
32	9.695 $\pm$ 0.67
37	12.85 $\pm$ 2.02
41	10.675 $\pm$ 0.78
53	12.78 $\pm$ 0.59
54	14.21 $\pm$ 1.31
56	13.045 $\pm$ 0.21
58	12.78 $\pm$ 0.50
59	14.6 $\pm$ 0.18
65	14.235 $\pm$ 1.67
67	14.945 $\pm$ 0.14
80	12.995 $\pm$ 0.60
83	25.775 $\pm$ 0.53
84	45.855 $\pm$ 0.37
175	38.155 $\pm$ 5.57
181	14.28 $\pm$ 0.00
182	14.28 $\pm$ 0.00
184	14.28 $\pm$ 0.00
194	14.28 $\pm$ 0.00
325	32.85 $\pm$ 2.02
<b>I.Rh.S: Infected Rhizospheric Soil</b>	
Strains	Mean $\pm$ Standard Deviation
100	39.995 $\pm$ 4.03
101	44.28 $\pm$ 2.02
103	42.1 $\pm$ 3.71
104	29.015 $\pm$ 0.30
105	38.155 $\pm$ 1.85
106	45.71 $\pm$ 4.04
107	38.155 $\pm$ 1.85
109	48.57 $\pm$ 0.00
111	37.14 $\pm$ 4.04
112	48.57 $\pm$ 0.00
113	42.85 $\pm$ 0.00
117	41.425 $\pm$ 2.01
118	49.995 $\pm$ 3.72
124	32.89 $\pm$ 1.86
125	40 $\pm$ 0.00

Supplementary Table S1. Continued.

<b>I.Rh.S: Infected Rhizospheric Soil</b>	
Strains	Mean $\pm$ Standard Deviation



130	19.735±1.85
132	12.85±2.02
290	35.71±2.02
197	15.015±0.30
199	17.015±0.30
201	10.745±0.88
206	18.14±0.60
207	16.14±0.60
300	22.62±0.70
<b>S.NRh: Non-rhizospheric Soil</b>	
Strains	Mean ± Standard Deviation
153	14.28±0.00
155	36.605±1.06
170	31.575±3.72
172	39.735±4.09
285	35.525±1.85
274	14.765±0.09
279	13.01±0.15
322	15.265±0.79
323	13.705±2.51
324	13.1±1.78
333	45.1±0.42
<b>H.R: Healthy Root</b>	
Strains	Mean ± Standard Deviation
214	12.85±2.02
219	31.925±0.10
222	19.735±1.85
224	18.615±0.55
227	36.85±1.41
231	28.57±0.00
241	26.63±0.00
242	19.735±1.85
245	6.445±4.56
<b>I.R: Infected Roots</b>	
Strains	Mean ± Standard Deviation
247	16.125±4.56
249	41.39±26.41
254	14.51±2.27
260	25.71±2.02
261	26.31±7.43
266	14.28±0.00