

Article

Agronomic Performance fo Winter-Sown Chickpea Breeding Lines with Contrasting Levels of Resistance to Ascochyta Blight

Diego Rubiales ^{1,*}, Ana Moral ^{1,†} and Fernando Flores²

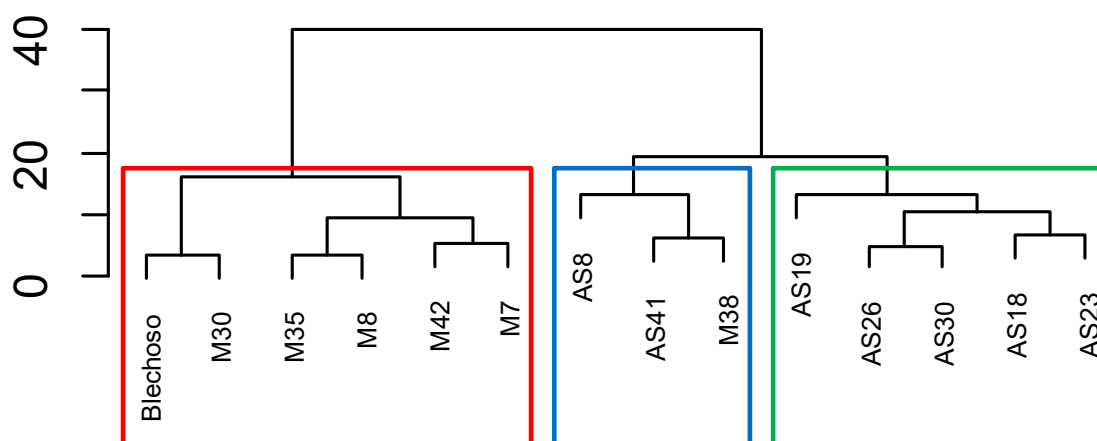


Figure S1. Dendrogram of the cluster analysis applied to the Euclidean distance of the ranks matrix in scenario from 50/50 to 0/100 for the WAASB/GY ratio, grouped by the Complete-linkage fusion technique.

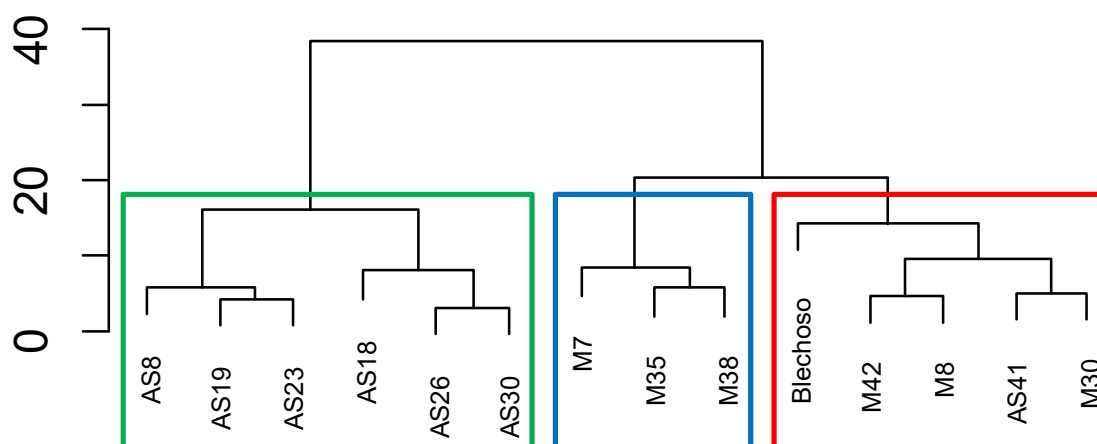


Figure S2. Dendrogram of the cluster analysis applied to the Euclidean distance of the ranks matrix in scenario from 50/50 to 0/100 for the WAASB/ascochyta blight (data transformed) ratio, grouped by the Complete-linkage fusion technique.