

Table S1: Similarity Index Using SCoT analysis for Ten Wheat Cultivars

	Miser 1	Miser 2	Giza 168	Giza 171	Shandawell 1	Sids 14	Gemmiza 9	Gemmiza 10	Gemmiza 11
Miser 1	1.000								
Miser 2	0.933	1.000							
Giza 168	0.984	0.949	1.000						
Giza 171	0.949	0.947	0.966	1.000					
Shandawell 1	0.951	0.949	0.933	0.931	1.000				
Sids 14	0.967	0.931	0.949	0.982	0.949	1.000			
Gemmiza 9	0.967	0.897	0.949	0.912	0.915	0.931	1.000		
Gemmiza 10	0.984	0.949	0.967	0.931	0.967	0.949	0.949	1.000	
Gemmiza 11	0.967	0.897	0.949	0.912	0.915	0.931	1.000	0.949	1.000
Gemmiza 12	0.967	0.931	0.949	0.912	0.949	0.931	0.931	0.983	0.931

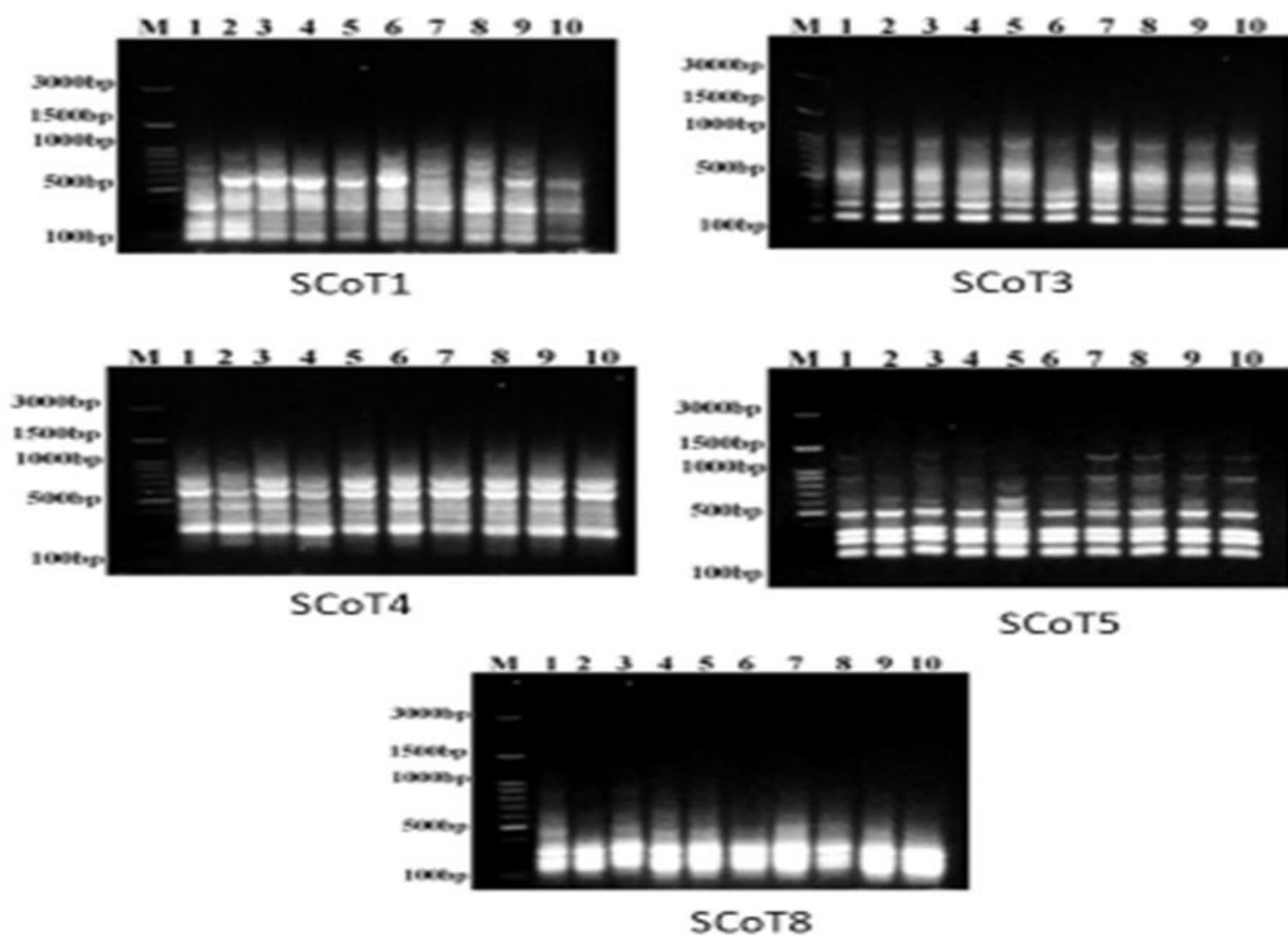


Figure S1: SCoT profiles of the ten wheat cultivar generated by five SCoT primers. Lanes 1 to 11; M: molecular weight of DNA marker, 1: Misr1, 2: Misr2, 3: Giza168, 4: Giza171, 5: Shandawell1, 6: Sids14, 7: Gemmiza9, 8: Gemmiza10, 9: Gemmiza11 and 10: Gemmiza12.