

Figure S1. Typical HPLC--FLD sample chromatogram (RT GSH--MBB= 7.2min) (right) and calibration curve for GSH (left); Limit of detection (LOD)= 1.16 μM; Limit of quantification (LOQ)= 1.41 μM.

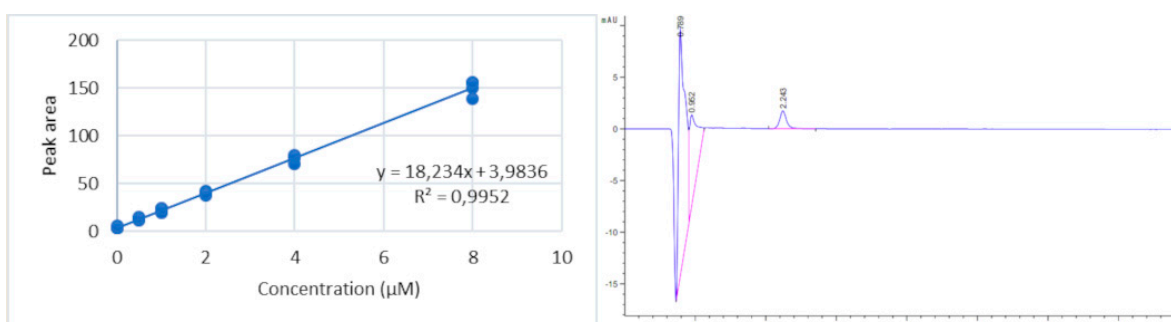


Figure S2. Typical HPLC--DAD sample chromatogram (RT MDA(TBA)2=2.1min) chromatogram (right) and calibration curve for MDA (left); Limit of detection (LOD)= 0.19 μM; Limit of quantification (LOQ) = 0.25 μM.