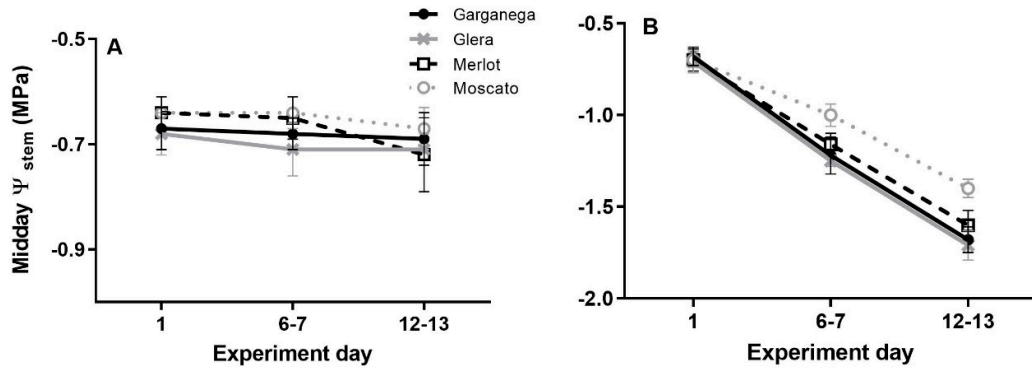


## SUPPLEMENTARY MATERIAL

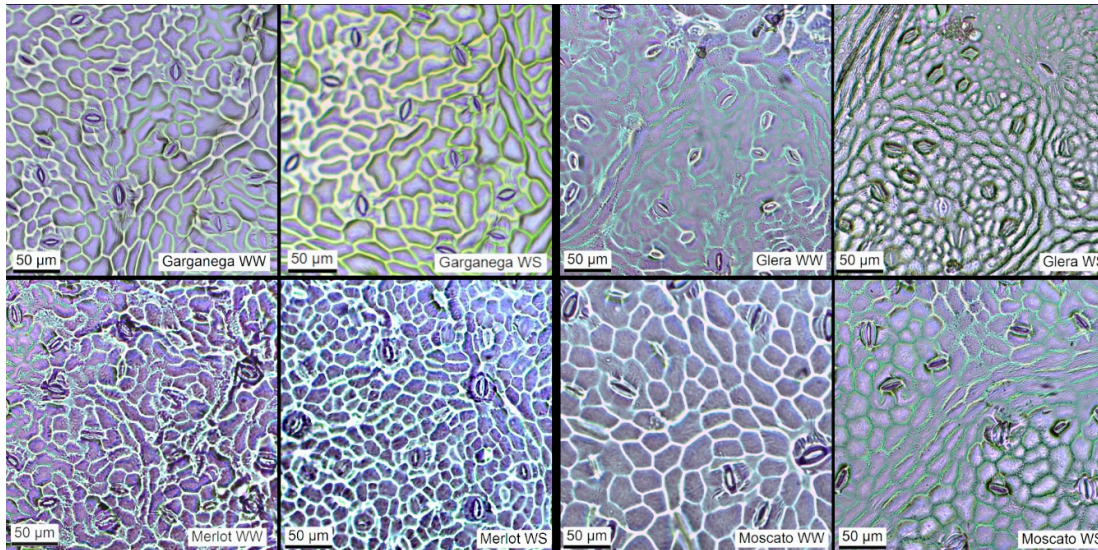
### Variability in stomatal adaptation to drought among grapevine cultivars: genotype-dependent responses

**Table S1.** List of the oligonucleotides used in the study.

Name	Primer sequence (5'-3')	Gene annotation or Target	Gene ID	Reference
<i>VvACT1_F</i>	GCCCCTCGTCTGTGACAATG	Actin	VIT_04s0044g00580	Chitarra et al., 2018
<i>VvACT1_R</i>	CCTTGGCCGACCCACAATA			
<i>VvUBI_F</i>	TCTGAGGTTCGTGGTGGA	Ubiquitin	VIT_16s0098g00580	Chitarra et al., 2018
<i>VvUBI_R</i>	AGGCGTGCATAACATTTGCG			
<i>VvEPFL9-like_F</i>	TCTCCTTGCAGCTCTCCTCA	EPFL9	VIT_05s0062g01380	This study
<i>VvEPFL9-like_R</i>	ACCCCATTTTCTCCATCCTCCA			
<i>VvEPF1-like_F</i>	AGCAGGGGACGATGGTGAGG	EPF1	VIT_12s0059g01730	This study
<i>VvEPF1-like_R</i>	GGCAAGCTTGACCCTGCAACT			
<i>VvEPF2-like_F</i>	TTGCGGGCCGTGCTTTCCAT	EPF2	VIT_18s0164g00010	This study
<i>VvEPF2-like_R</i>	TCCCTTTACACGTGCACCTGT			
<i>VvDH_F</i>	AACCCGGCGTGCTTCAT	DHN1a	VIT_04s0023g02480	Chitarra et al., 2014 Pagliarani et al., 2022
<i>VvDH_R</i>	CATGCCCCGTATCCTCTCTTT			



**Figure S1.** Midday stem water potential ( $\Psi_{\text{stem}}$ ) measured in well-watered (A) and water stress treatments (B) of the four varieties under study during the experiment. Each point is the average of measurements taken on five individual plants over 2 seasons (2017-2018). This figure summarises the data published in extended form in Gaiotti et al. (2023), [28].



**Figure S2.** Comparative images of the stomata of the four varieties under study under well-watered (WW) and water stress (WS) conditions. Photomicrographies are taken from nail polish impressions of the abaxial leaf surface of young leaves (7 days after tip separations).