

Supplementary materials

Table S1: Micronutrient analyses of the soil samples collected from three different districts of Tamil Nadu

Soil Sample No	Copper (ppm)	Manganese (ppm)	Zinc (ppm)	Iron (ppm)	Calcium (ppm)	Magnesium (ppm)
1	0.54 ± 0.01	0.71 ± 0.01	1.64 ± 0.08	8.45 ± 0.04	5.21 ± 0.19	0.64 ± 0.03
2	0.32 ± 0.03	0.86 ± 0.04	2.18 ± 0.09	11.26 ± 0.21	4.87 ± 0.12	1.12 ± 0.06
3	0.68 ± 0.02	1.42 ± 0.03	1.76 ± 0.02	15.18 ± 0.41	5.68 ± 0.29	0.87 ± 0.02
4	0.37 ± 0.01	0.68 ± 0.03	0.94 ± 0.03	12.64 ± 0.13	8.72 ± 0.04	1.24 ± 0.01
5	0.56 ± 0.03	0.57 ± 0.02	1.12 ± 0.04	10.96 ± 0.12	4.38 ± 0.12	1.06 ± 0.01
6	0.25 ± 0.01	1.62 ± 0.06	0.85 ± 0.04	8.59 ± 0.28	5.64 ± 0.19	0.98 ± 0.02
7	1.16 ± 0.05	0.39 ± 0.02	1.16 ± 0.03	16.47 ± 0.28	10.13 ± 0.21	0.86 ± 0.04
8	0.71 ± 0.01	0.55 ± 0.02	2.06 ± 0.03	15.44 ± 0.21	9.05 ± 0.06	1.14 ± 0.05
9	0.62 ± 0.02	0.92 ± 0.01	1.87 ± 0.07	12.95 ± 0.37	11.47 ± 0.37	0.77 ± 0.03
10	0.29 ± 0.01	1.18 ± 0.04	1.19 ± 0.01	17.38 ± 0.69	6.28 ± 0.12	1.28 ± 0.01
11	1.15 ± 0.02	1.86 ± 0.03	2.52 ± 0.01	15.47 ± 0.46	7.94 ± 0.22	1.09 ± 0.05
12	2.14 ± 0.09	0.89 ± 0.04	1.46 ± 0.01	18.62 ± 0.4	12.86 ± 0.16	0.96 ± 0.03
13	1.96 ± 0.06	2.15 ± 0.06	2.13 ± 0.01	17.54 ± 0.52	10.34 ± 0.02	1.64 ± 0.02

Values in each column are mean of three replications ± SE (standard error)

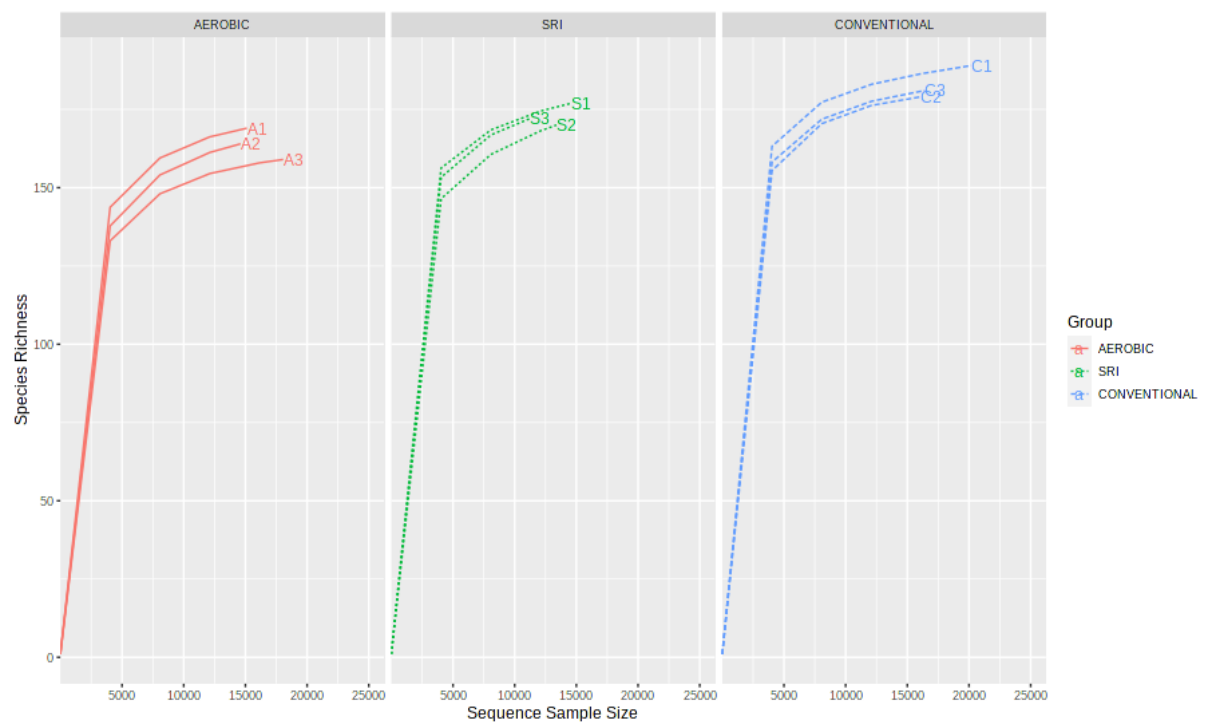


Figure S1: Rarefaction analysis of soil samples from three different types of rice planting systems.

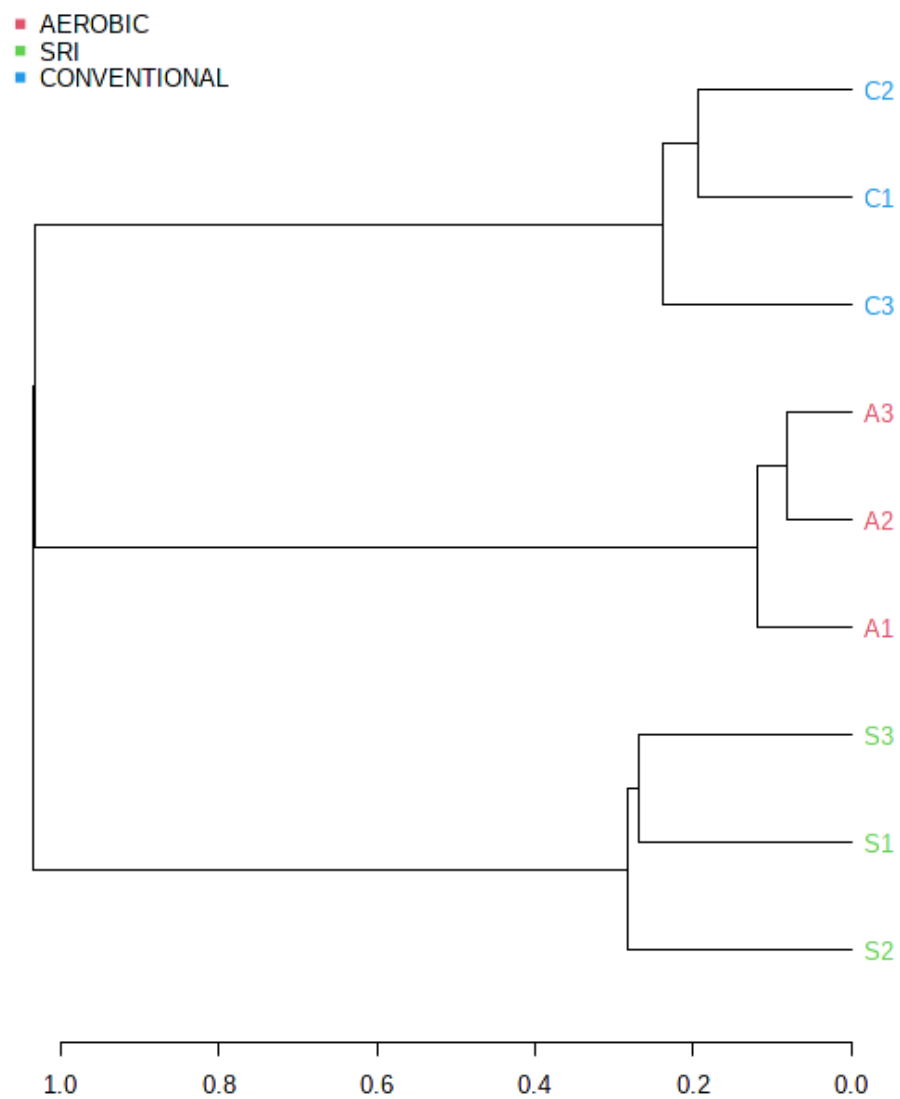


Figure S3: Hierarchical clustering/Dendrogram showing the phylogenetic relationship of three different types of rice planting systems.

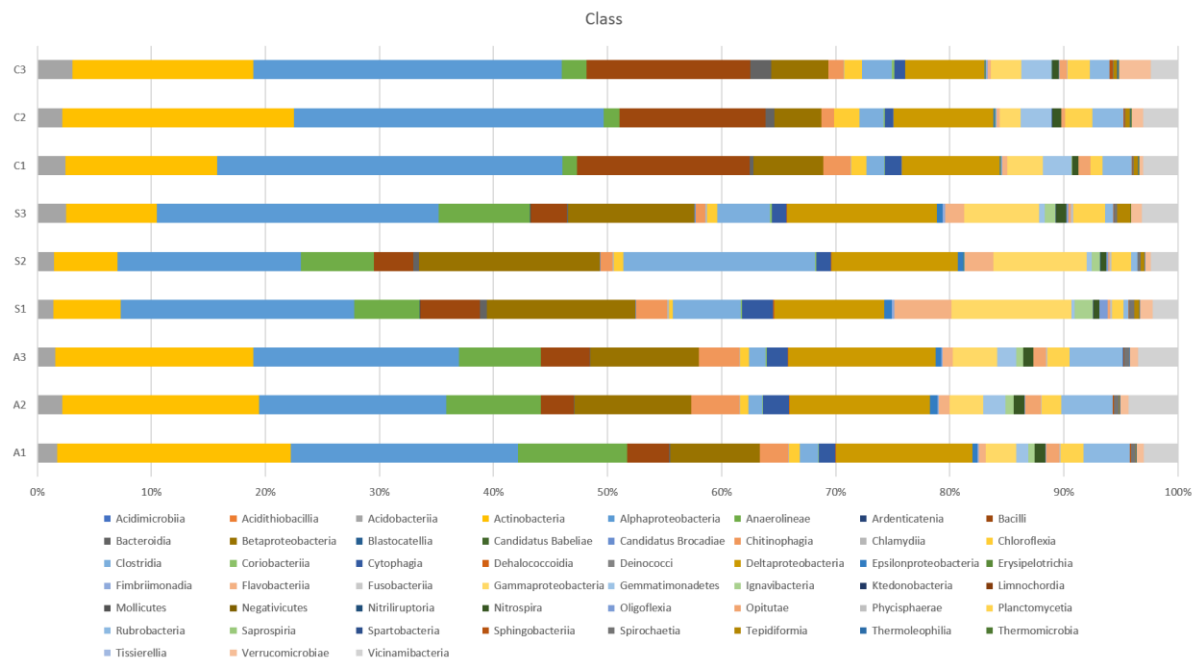


Figure S4: Taxonomic composition and relative abundance of bacterial classes of three different types of rice planting systems.

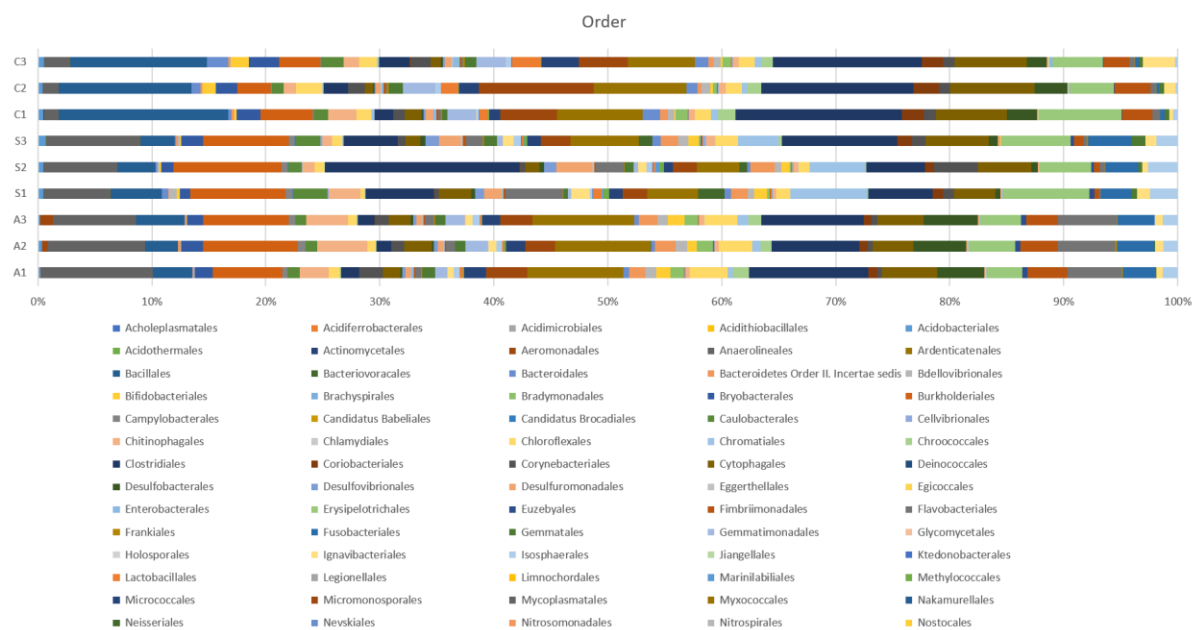


Figure S5: Taxonomic composition and relative abundance of bacterial levels of three different types of rice planting systems.



Figure S6: Taxonomic composition and relative abundance of bacterial family of three different types of rice planting systems.

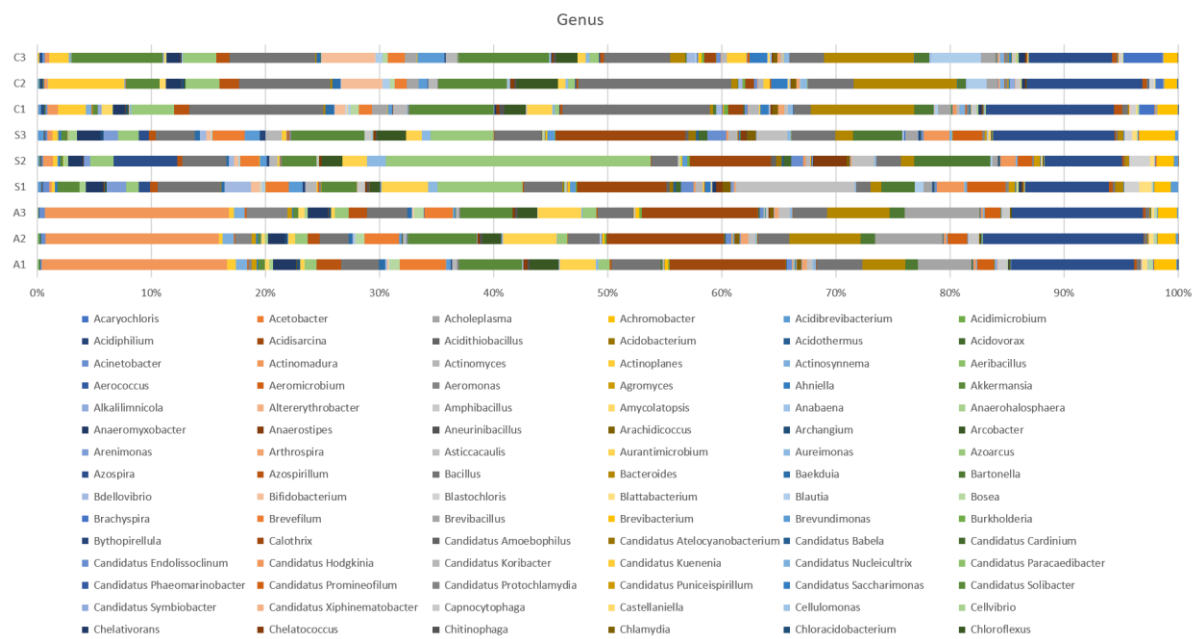


Figure S7: Taxonomic composition and relative abundance of bacterial genera of three different types of rice planting systems.

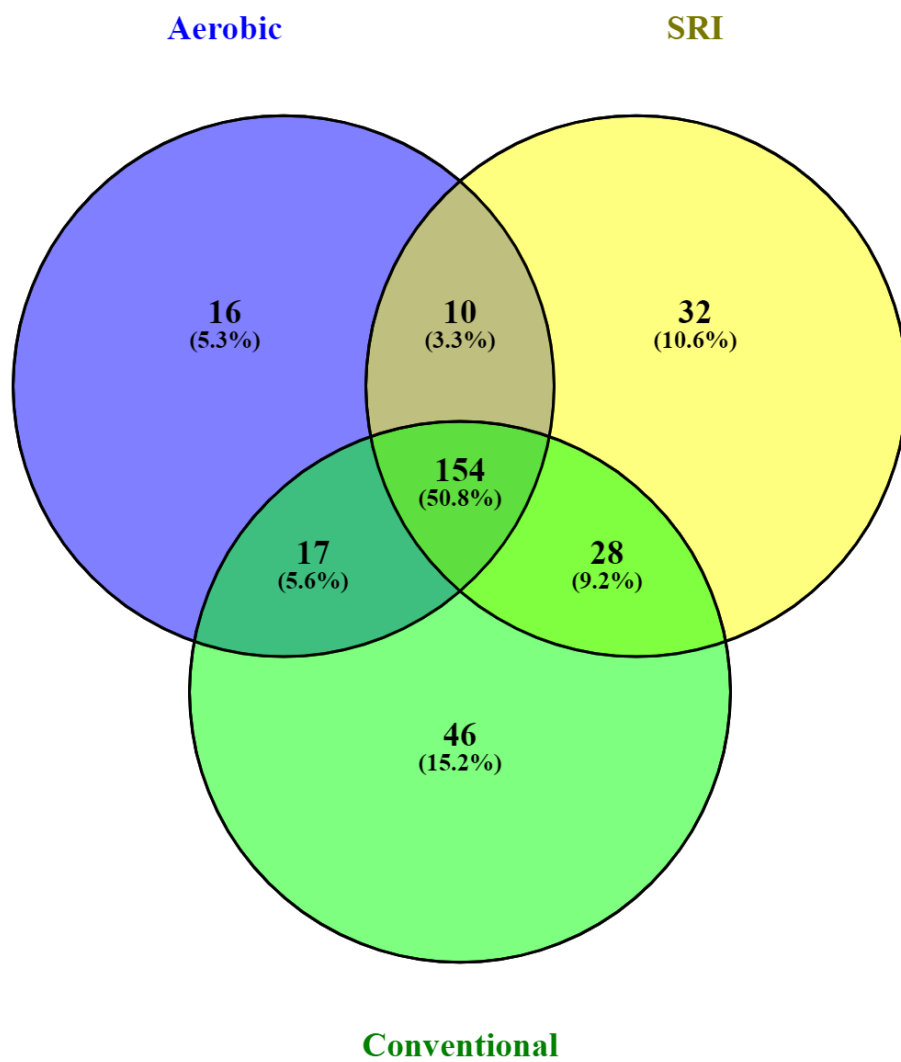


Figure S8: Venn diagram depicting the distribution of Amplicon sequence variants of the bacterial community of aerobic, conventional and SRI soil samples.