

Supplementary material

# Susceptibility Patterns in *Staphylococcus* and *Klebsiella* Causing Nosocomial Infections upon Treatment with *E*-Anethole-Rich Essential Oil from *Clausena anisata*

François Nguimatsia <sup>1</sup>, Evariste Josué Momo <sup>2,3</sup>, Paul Keilah Lunga <sup>4</sup>, Virginia Lum Tamanji <sup>1</sup>, Boniface Pone Kamdem <sup>4,\*</sup> and Pierre Michel Jazet Dongmo <sup>3</sup>

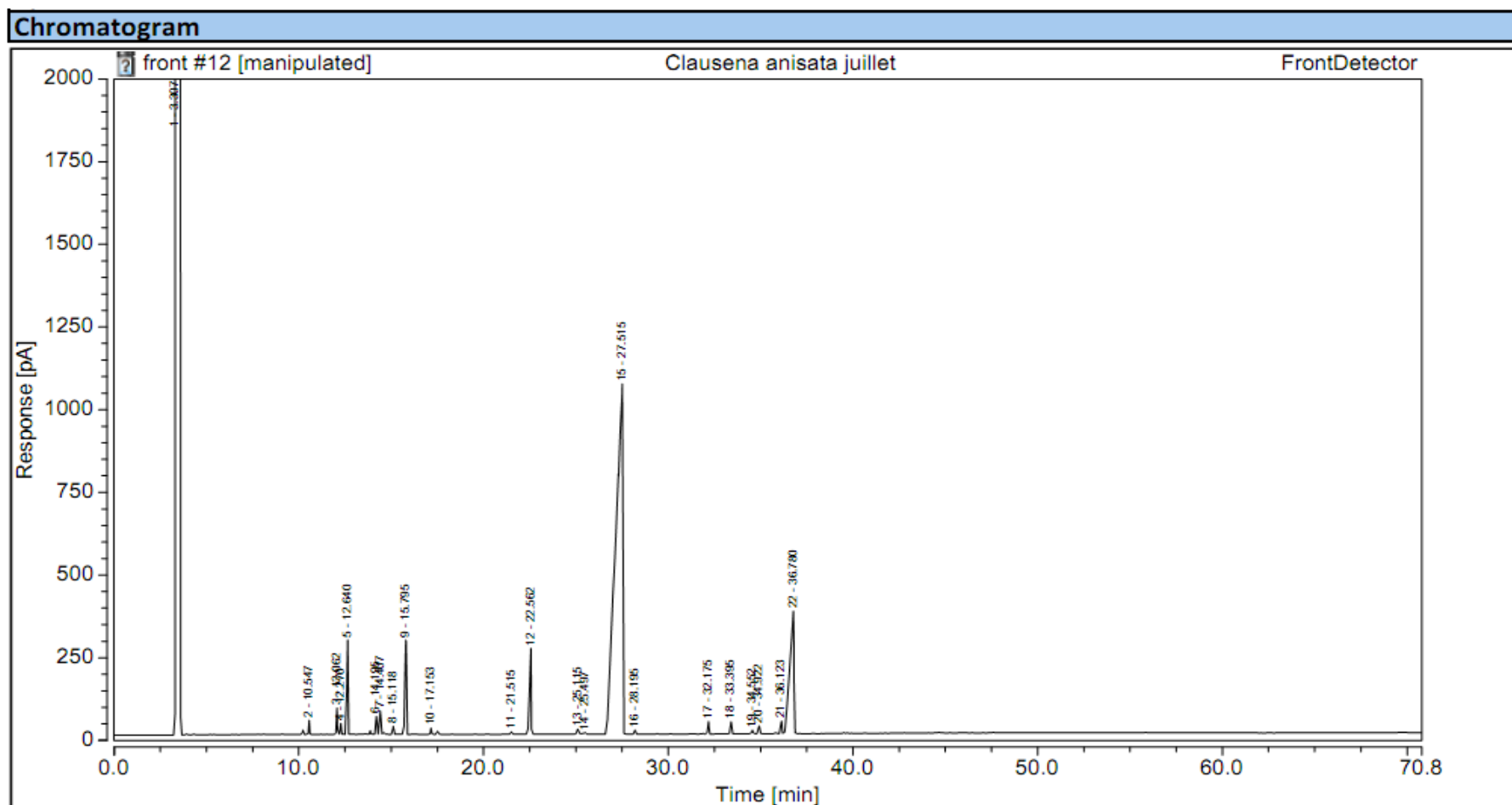
<sup>1</sup> Laboratory of Pharmacognosy, Faculty of Pharmacy, University of the Mountain, P.O. Box 208, Bangangté, Cameroon

<sup>2</sup> Higher Teacher Training College, Bertoua (HTTC), University of Bertoua, P.O. Box 652, Bertoua, Cameroon; momoevaj@yahoo.fr

<sup>3</sup> Laboratory of Biochemistry, Faculty of Science, University of Douala, P.O. Box 24157, Douala, Cameroon

<sup>4</sup> Antimicrobial and Biocontrol Agents Unit (AmBcAU), Laboratory for Phytobiochemistry and Medicinal Plants Studies, Department of Biochemistry, Faculty of Science, University of Yaounde I, P.O. Box 812, Yaounde, Cameroon

\* Correspondence: ponekamdemboniface@gmail.com; Tel.: +237-680-98-76-69



**Figure S1.** Chromatogram of the essential oil of *Clausena anisata*.