

# Supplementary Materials: Relationship between Microstructure, Mechanical Properties and Creep Behavior of a Cr-Rich Ferritic Stainless Steel Produced by Laser Powder Bed Fusion

Dennis Karlsson <sup>1,2</sup>, Thomas Helander <sup>2</sup>, Eleonora Bettini <sup>3</sup>, Carl-Johan Hassila <sup>4</sup>, Johan Cedervall <sup>5</sup>, Martin Sahlberg <sup>1</sup>, Peter Harlin <sup>3</sup> and Ulf Jansson <sup>1,\*</sup>

<sup>1</sup> Ångström Laboratory, Department of Chemistry, Uppsala University, P.O. Box 523, 751 20 Uppsala, Sweden; dennis.karlsson@kemi.uu.se (D.K.); martin.sahlberg@kemi.uu.se (M.S.)

<sup>2</sup> Kanthal AB, P.O. Box 502, 734 27 Hallstahammar, Sweden; thomas.helander@kanthal.com

<sup>3</sup> Sandvik Additive Manufacturing, 811 81 Sandviken, Sweden; eleonora.bettini@sandvik.com (E.B.); peter.harlin@sandvik.com (P.H.)

<sup>4</sup> Applied Material Science, Department of Engineering Sciences, Uppsala University, 751 20 Uppsala, Sweden; carljohan.hassila@angstrom.uu.se

<sup>5</sup> Department of Materials and Environmental Chemistry, Stockholm University, Svante Arrhenius väg 16 C, SE-106 91 Stockholm, Sweden; johan.cedervall@mmk.su.se

\* Correspondence: ulf.jansson@kemi.uu.se

**Citation:** Karlsson, D.; Helander, T.; Bettini, E.; Hassila, C.-J.; Cedervall, J.; Sahlberg, M.; Harlin, P.; Jansson, U. Relationship between Microstructure, Mechanical Properties and Creep Behavior of a Cr-Rich Ferritic Stainless Steel Produced by Laser Powder Bed Fusion. *Alloys* **2022**, *1*, 263–276. <https://doi.org/alloys1030017>

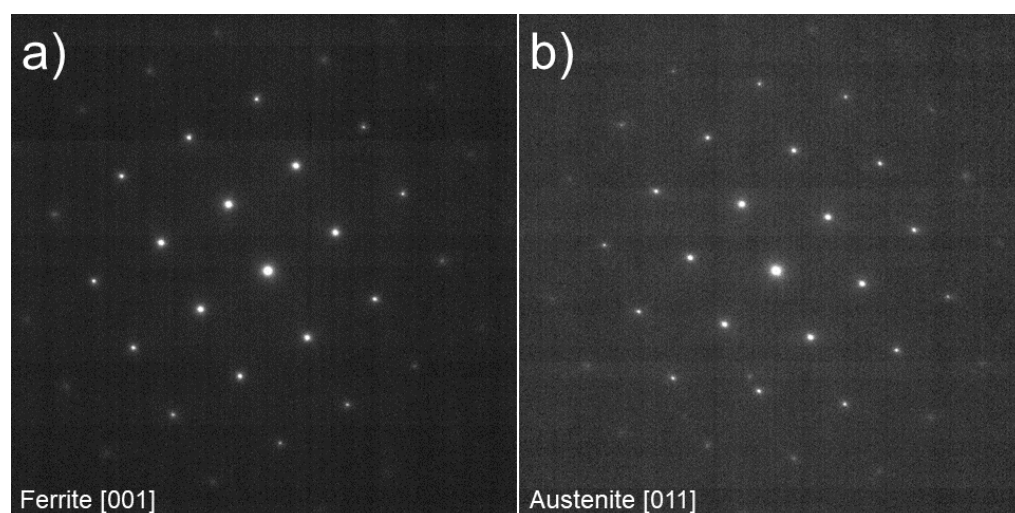
Academic Editor:  
Giovanni Meneghetti

Received: 21 September 2022  
Accepted: 23 November 2022  
Published: 5 December 2022

**Publisher's Note:** MDPI stays neutral with regard to jurisdictional claims in published maps and institutional affiliations.



**Copyright:** © 2022 by the authors. Submitted for possible open access publication under the terms and conditions of the Creative Commons Attribution (CC BY) license (<http://creativecommons.org/licenses/by/4.0/>).



**Figure S1.** Selected area electron diffraction patterns for (a) the ferrite grain and (b) the austenitic grain in the grain boundary shown in Figure 6b.