

SARS-COV-2 CONTACTS SYMPTOM DEVELOPMENT AND SECONDARY ATTACK RATE: A RETROSPECTIVE ANALYSIS OF A CONTACT-TRACING COHORT IN CATALONIA

Supplementary Material

Table S1. Symptom development and confirmation of COVID-19 case among close contacts (CC).

| Secondary case | Symptomatic CC | | | | Total |
|----------------|----------------|---------------|---------------|---------------|---------------|
| | Yes | | No | | |
| | n | % | n | % | |
| Yes | 6,326 | 68.4% | 5,357 | 13.9% | 11,683 |
| No | 2,918 | 31.6% | 33,128 | 86.1% | 36,046 |
| TOTAL | 9,244 | 100.0% | 38,485 | 100.0% | 47,729 |

Table S2. Demographic factors of symptom development among secondary cases reported at the time of case epidemiological interview before and after the Universal PCR strategy

| | Before | | After | | p-value |
|-----------------------------|-------------|--------------|-------------|--------------|-----------------|
| | n | % | n | % | |
| TOTAL | 2812 | 56,3% | 3514 | 52,6% | <0,05 |
| Sex | | | | | |
| Males | 1256 | 54,7% | 1597 | 50,2% | <0.05 |
| Females | 1556 | 57,6% | 1917 | 54,7% | |
| Age group (years) | | | | | |
| 0-1 | 52 | 59,8% | 55 | 52,4% | <0.05 |
| 2-5 | 115 | 44,9% | 119 | 36,4% | |
| 6-12 | 192 | 43,6% | 213 | 33,3% | |
| 13-19 | 220 | 47,8% | 278 | 40,9% | |
| 20-39 | 988 | 58,0% | 1248 | 57,4% | |
| 40-59 | 855 | 61,2% | 1098 | 58,7% | |
| 60-79 | 326 | 59,9% | 423 | 57,2% | |
| > 79 | 64 | 57,1% | 80 | 53,7% | |
| Setting of exposure* | | | | | |
| Social | 2 | 50,0% | 440 | 53,7% | <0.05 |

| | | | | |
|----------------------------|-----|-------|------|-------|
| Household | 16 | 44,4% | 1876 | 49,9% |
| Non-household / Non-social | 19 | 67,9% | 300 | 57,1% |
| Unknown | 689 | 54,7% | 898 | 56,8% |

* Setting of exposure only for close contacts registered in August.

Mantel-Haenszel chi-squared test

Table S3. Typology of COVID-19 like symptoms among symptomatic secondary cases (SC).

| Type of symptoms | Number of SC | % |
|------------------|--------------|---------------|
| Ageusia | 975 | 30.6% |
| Anosmia | 1,062 | 33.3% |
| Chill | 507 | 15.9% |
| Cough | 1,441 | 45.2% |
| Diarrhea | 775 | 24.3% |
| Dyspnea | 353 | 11.1% |
| Fever | 1,716 | 53.8% |
| Odynophagia | 987 | 30.9% |
| Vomit | 213 | 6.7% |
| TOTAL | 3,190 | 100.0% |

Table S3a). Typology of COVID-19 like symptoms among symptomatic secondary cases by sex

| | Women | | Men | | p-value |
|--------------|--------------|---------------|--------------|---------------|---------|
| | n | % | n | % | |
| Fever | 453 | 25.8% | 421 | 29.4% | 0.05 |
| Cough | 421 | 23.9% | 356 | 24.9% | 0.66 |
| Odynophagia | 341 | 19.4% | 247 | 17.2% | <0.05 |
| Chill | 187 | 10.6% | 173 | 12.1% | 0.869 |
| Dyspnea | 128 | 7.3% | 83 | 5.8% | 0.074 |
| Vomit | 75 | 4.3% | 35 | 2.4% | <0.05 |
| Diarrhea | 252 | 14.3% | 196 | 13.7% | 0.321 |
| Ageusia | 326 | 18.5% | 220 | 15.4% | <0.05 |
| Anosmia | 357 | 20.3% | 245 | 17.1% | <0.05 |
| TOTAL | 1,758 | 100.0% | 1,432 | 100.0% | - |

Table S3b). Typology of COVID-19 like symptoms among symptomatic secondary cases by age group.

| | <u>< 12 years</u> | | <u>12-19 years</u> | | <u>20-39 years</u> | | <u>40-59 years</u> | | <u>60-79 years</u> | | <u>>79 years</u> | | p-value |
|--------------|----------------------|---------------|--------------------|---------------|--------------------|---------------|--------------------|---------------|--------------------|---------------|---------------------|---------------|----------------|
| | n | % | n | % | n | % | n | % | n | % | n | % | |
| Fever | 124 | 36.4% | 81 | 27.7% | 285 | 25.9% | 241 | 25.4% | 124 | 29.2% | 19 | 22.6% | <0.05 |
| Cough | 46 | 13.5% | 51 | 17.5% | 271 | 24.6% | 252 | 26.6% | 131 | 30.9% | 26 | 31.0% | <0.05 |
| Odynophagia | 33 | 9.7% | 56 | 19.2% | 251 | 22.8% | 183 | 19.3% | 56 | 13.2% | 9 | 10.7% | <0.05 |
| Chill | 20 | 5.9% | 21 | 7.2% | 158 | 14.4% | 110 | 11.6% | 43 | 10.1% | 8 | 9.5% | <0.05 |
| Dyspnea | 6 | 1.8% | 10 | 3.4% | 94 | 8.5% | 68 | 7.2% | 24 | 5.7% | 9 | 10.7% | <0.05 |
| Vomit | 17 | 5.0% | 5 | 1.7% | 45 | 4.1% | 25 | 2.6% | 16 | 3.8% | 2 | 2.4% | 0.087 |
| Diarrhea | 40 | 11.7% | 30 | 10.3% | 156 | 14.2% | 138 | 14.5% | 74 | 17.5% | 10 | 11.9% | <0.05 |
| Ageusia | 16 | 4.7% | 42 | 14.4% | 263 | 23.9% | 160 | 16.9% | 61 | 14.4% | 4 | 4.8% | <0.05 |
| Anosmia | 17 | 5.0% | 47 | 16.1% | 296 | 26.9% | 183 | 19.3% | 57 | 13.4% | 2 | 2.4% | <0.05 |
| TOTAL | 341 | 100.0% | 292 | 100.0% | 1100 | 100.0% | 949 | 100.0% | 424 | 100.0% | 84 | 100.0% | - |

Figure S1. Forest plot symptom development by pre and post universal PCR period.

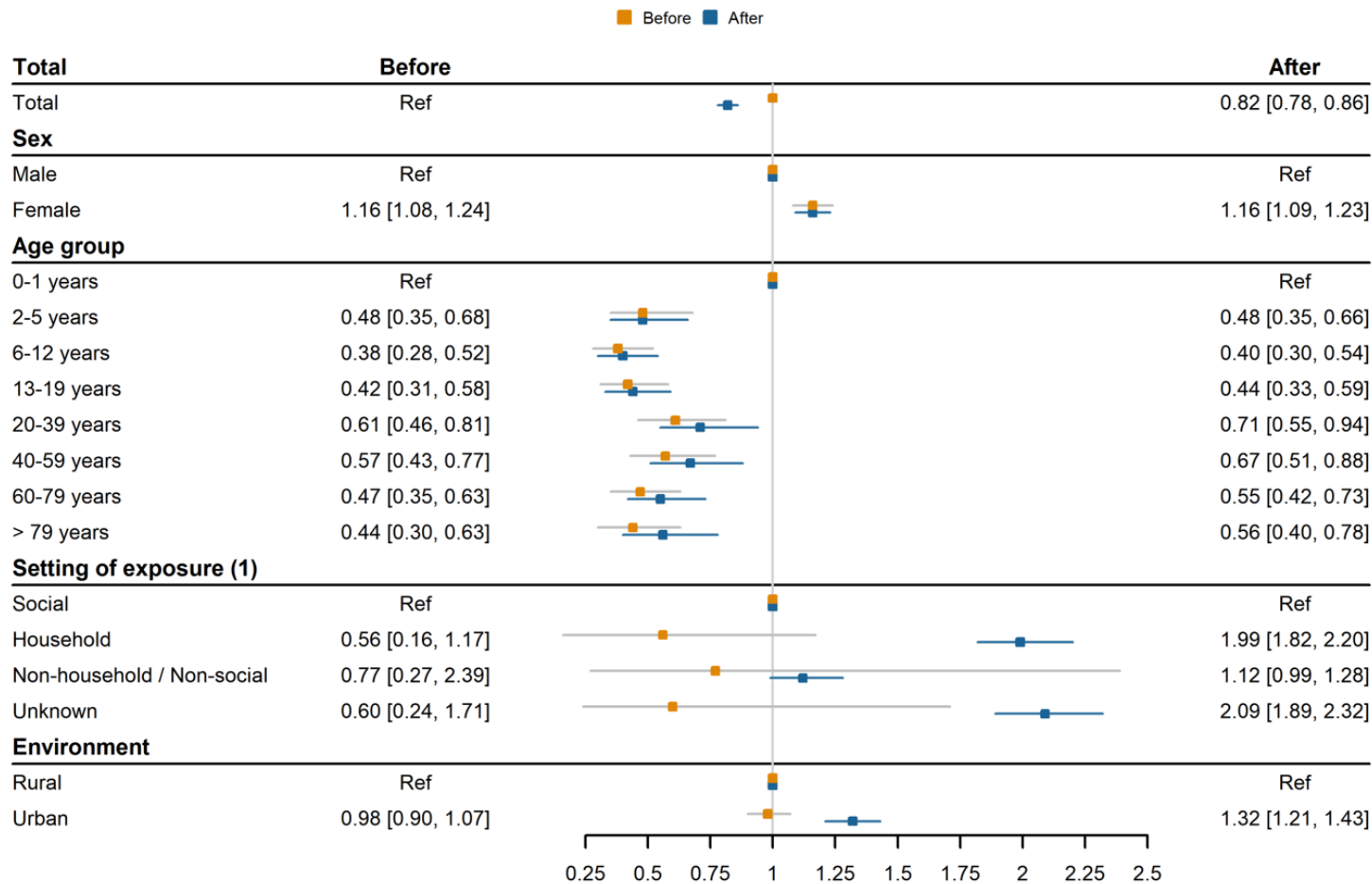


Figure S2. Forest plot secondary case by pre and post universal PCR period.

