

Supplementary figures

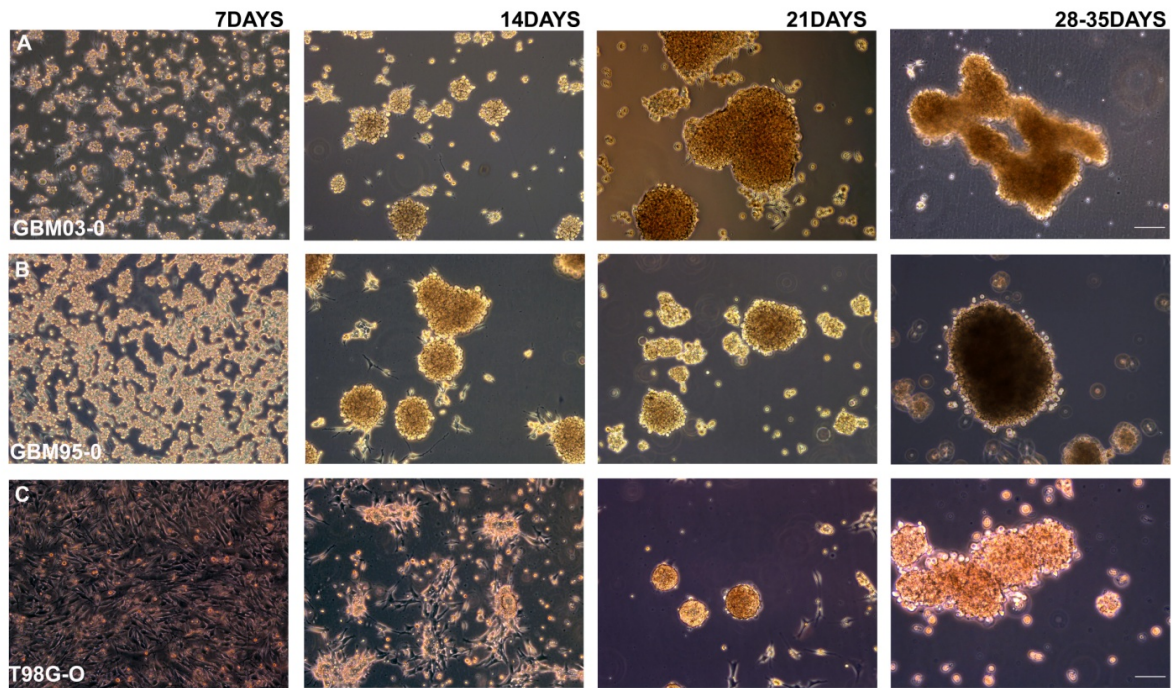


Figure S1. Conversion of GBM cells into stem-like cells. GBM cells were cultured in NS34 media required for conversion of tumor cells to oncospheres and maintained at 37°C in a humidified 5% CO₂ and 95% air atmosphere (A-C). The photos were taken using DMi8 Leica microscope edited using image J. Scale bar = 200 μm. Each experiment was done at least 3 times.

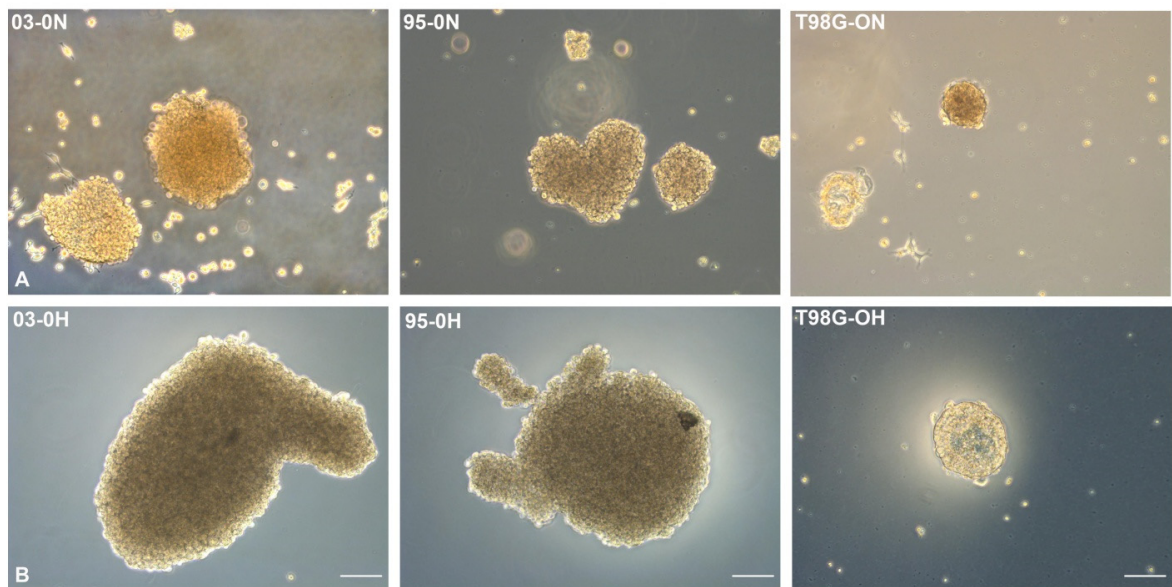


Figure S2. Morphological changes of stem-like cells under normoxia and hypoxia microenvironments. The stem-like cells (O) obtained from GBM 03, 95 and T98G were cultured in normoxia (N) and 1% O₂ for hypoxia (H) (A-B). The photos were taken using DMi8 Leica microscope and edited using image J. These pictures were obtained from one independent experiment. Scale bar = 200 μm. There was a sphere size increment for the spheres cultured under hypoxia.

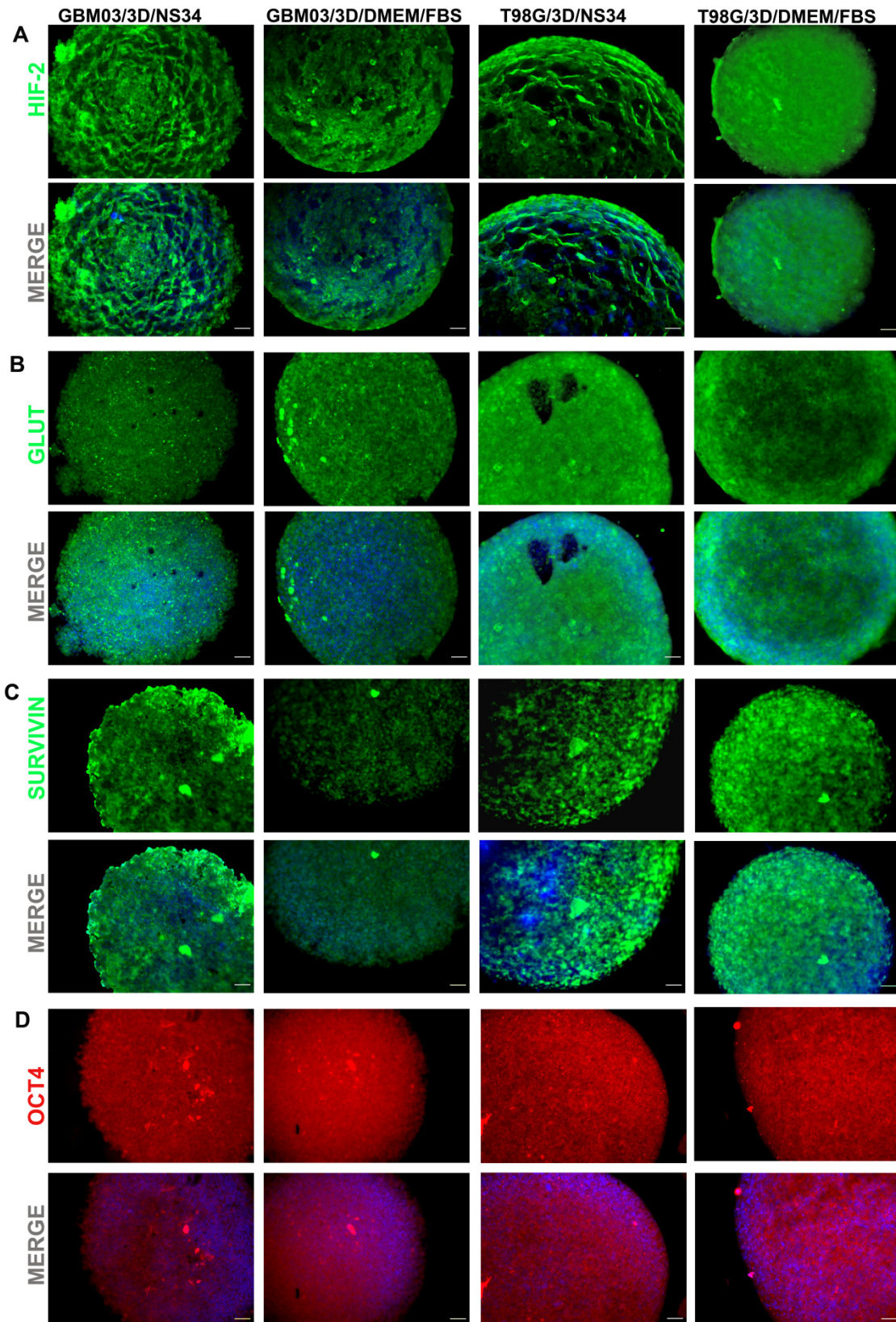


Figure S3. Expression of selected genes by the glioblastoma spheroids. The GBM03 and T98G parental cells were cultured under 3D using the stem cell media (NS34) or the conventional culture media DMEM with 10% FBS in 96well plates and their growth followed for upto 12 days. They were then evaluated for the expression of Hif-2 α (A), Glut-2 (B), Survivin (C) and Oct-4 (D) by immunofluorescence. The Images were taken with DMi8 Leica microscope. Scale bar = 50 μ m.