

Pre-Treatment C-Reactive Protein Predicts Survival in Small Cell Lung Cancer Patients

Anne Marie Stensvold, Ninna Aggerholm-Pedersen, Anne Winther-Larsen and Birgitte Sandfeld-Paulsen

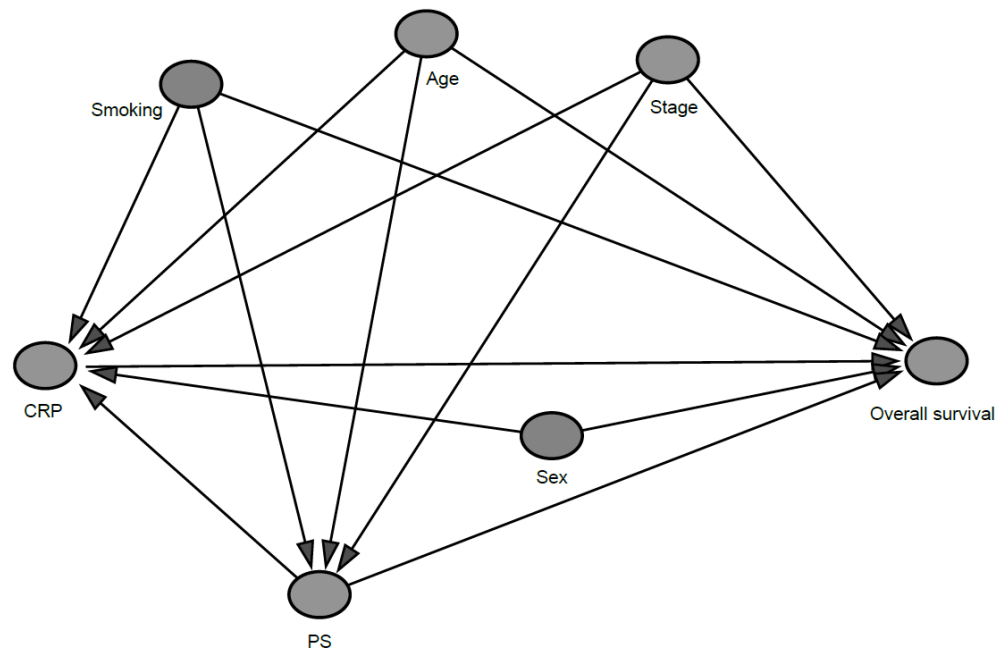


Figure S1. Visualization of the directed acyclic graph (DAG) identifying confounders of CRPs effect on overall survival.

Table S1. Patient Characteristics of included and excluded patients (N=1,316)

	Included patients	Excluded patients	<i>P</i> -value
Total	923 (70%)	389 (30%)	
Age , median years (95% percentiles)	70 (52-83)	69 (53-83)	0.15
Sex			0.03
Female	465 (50%)	152 (43%)	
Male	458 (50%)	200 (57%)	
Stage			0.16
I	47 (5%)	11 (3%)	
II	20 (2%)	8 (2%)	
III	225 (24%)	103 (29%)	
IV	548 (59%)	211 (60%)	
Unknown	83 (9%)	19 (6%)	
Performance stage, ECOG			0.02
0	213 (23%)	101 (29%)	
1	291 (32%)	121 (34%)	
2	149 (16%)	52 (15%)	
3	171 (19%)	47 (13%)	
Unknown	99 (11%)	31 (9%)	
Smoking			0.99
Never	7 (< 1%)	3 (< 1%)	
Former or current	817 (89%)	354 (91%)	
Unknown	99 (11%)	32 (9%)	