

Supplementary Information S1 – Zonal delineation and sampling locations

Nine zones were created in ArcGIS Pro using the Trace tool. (Figure S11.1) It was decided that the four main habitat classes would be surveyed twice in each zone (water, built, woody and non woody), to bring the total number of sites to 72. This was done to create a larger database for analysis that would be more statistically robust and less sensitive to outliers during the statistical analysis of the surveys and habitat classes. The zones created were altered in their boundaries to accommodate the presence of the four classes in each zone, where two sites for each class could be surveyed. Upon completing the zone boundaries, the 72 sites were randomly chosen, with 8 sites in each zone.

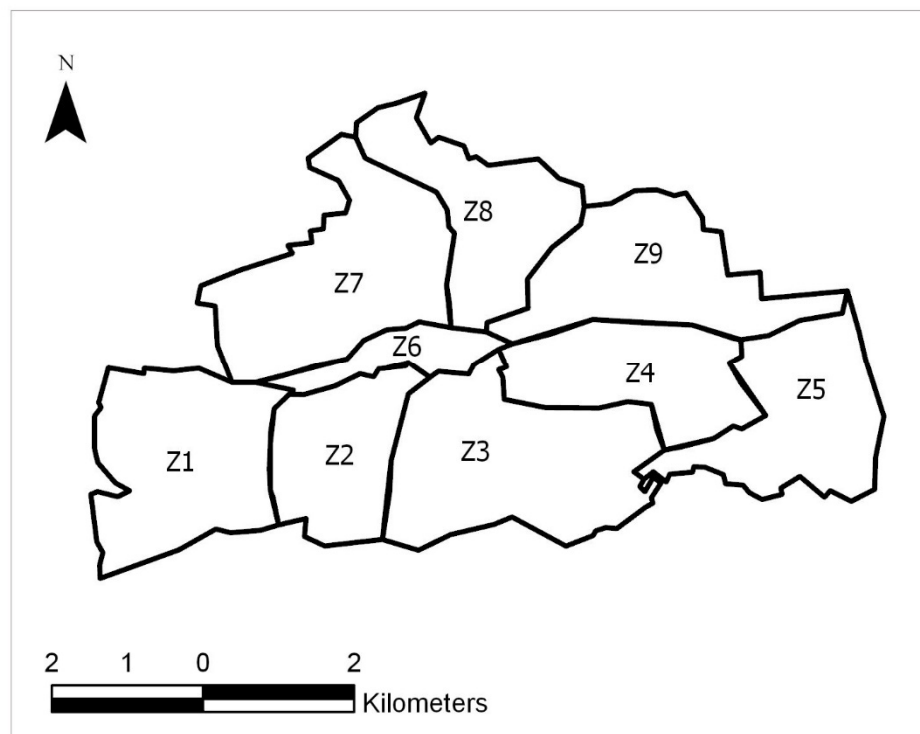


Figure S1. the 9 zones used within the sampling strategy. Z1 (the Lee Fields/Bishopstown), Z2 (UCC/The Lough/Togher), Z3 (Ballinlough/Turners Cross), Z4 (Ballintemple/The Marina), Z5 (Blackrock/Mahon), Z6 (City Centre), Z7 (Northwest), Z8 (North Central), Z9 (North east).

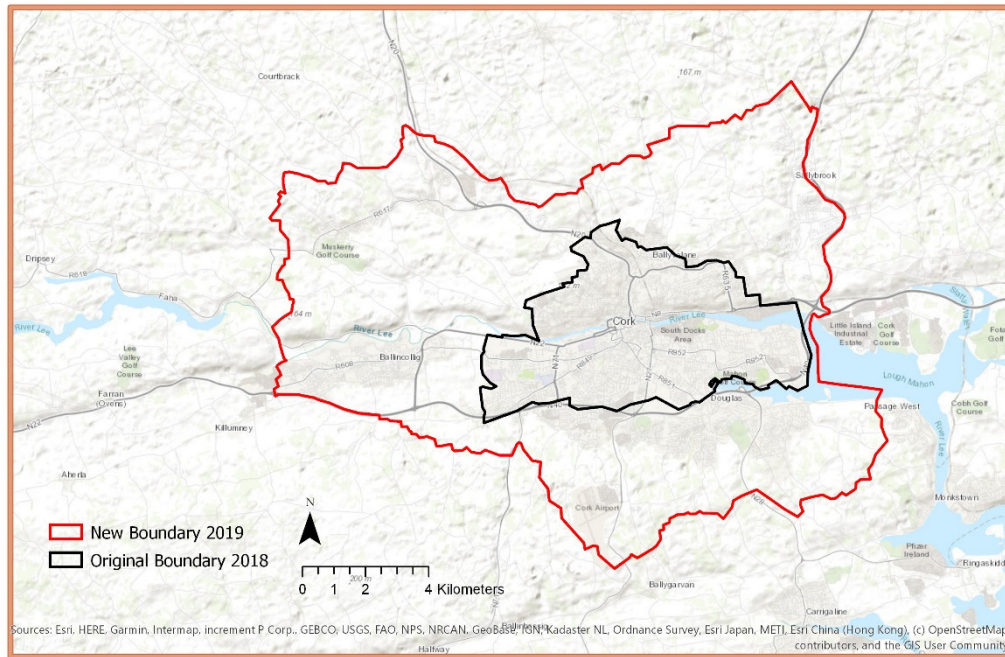


Figure S2, the original and new city boundary of Cork City. The original boundary was extended in 2019 to encompass a much larger (and predominantly rural) area.