

Supplementary File S1: Search Strategy

| Database: Ovid MEDLINE(R) and Epub Ahead of Print, In-Process & Other Non-Indexed Citations and Daily <1946 to April 11, 2019> | |
|--|--|
| 1 | reproductive health/ or sexual health/ or maternal health/ or exp sexual behavior/ or sex education/ or sex counseling/ or ((sexual or reproductive) adj3 health).ti,ab,kf. or (reproductive health or reproductive health matters or "sexual & reproductive healthcare official journal of the swedish association of midwives" or sexual health or sexual health exchange).jn. (126591) |
| 2 | domestic violence/ or gender-based violence/ or exp intimate partner violence/ or rape/ or exp sexually transmitted diseases/ or exp pregnancy, unwanted/ or exp pregnancy in adolescence/ or exp abortion, induced/ or circumcision, female/ or (((early or adolescen* or teen* or unintended or accidental or unwanted) adj3 pregnanc*) or ((domestic or partner or spous* or wife or wives or husband*) adj3 (violen* or abuse*)) or rape or ((unprotected or unsafe or safe) adj (sex* or intercourse)) or genital mutilation or female circumcision or clitorrectomy or sex education or sex counseling).ti,ab,kf. or ((sexually transmitted or hiv or aids or acquired immun* or syphilis or gonorrhea or chlamydia or genital herpes) adj3 (prevent* or (risk* adj3 behavio?r*))).ti,ab,kf. (431254) |
| 3 | Family Planning Services/ or exp Contraception/ or exp reproductive behavior/ or birth intervals/ or (family planning or contracepti* or condom* or ((spacing or timing or interval*) adj3 (pregnanc* or birth)) or ((early or forced or teen* or adolescen*) adj3 (marriage or married)) or ((safe* or unsafe or rate*) adj abortion*).ti,ab,kf. or exp Menstrual Cycle/ or ((menstruation or menstrual or female* or women*) adj3 (hygiene or sanitary or sanitation)).ti,ab,kf. (147937) |
| 4 | 1 or 2 or 3 (606951) |
| 5 | Adolescent Health Services/ or (teen* or adolescen* or youth or girl* or boy or boys or young women or young men or (young adj2 (men* or women*))).ti,ab,kf. or adolescen*.nw,jw. (548918) |
| 6 | 4 and 5 (47610) |
| 7 | (((middle or low) adj2 income adj2 (countr* or nation* or region*)) or Imic* or developing countr* or africa* or Afghanistan or Guinea or Rwanda or Benin or Guinea-Bissau or Senegal or "Burkina Faso" or Haiti or Sierra Leone or Burundi or North Korea or Democratic People* Republic of Korea or Somalia or Central African Republic or Liberia or South Sudan or Chad or Madagascar or Tanzania or Comoros or Malawi or Togo or Congo or Mali or Uganda or Eritrea or Mozambique or Zimbabwe or Ethiopia or Nepal or Gambia or Niger or Armenia or Kiribati or Solomon Islands or Bangladesh or Kosovo or Sri Lanka or Bhutan or Kyrgyz* or Sudan or Bolivia or Laos or Swaziland or Cabo Verde or cape verde or Lesotho or Syrian or Cambodia or Mauritania or Tajikistan or Cameroon or Micronesia or Timor or Congo or Moldova or Tonga or Cote d'Ivoire or ivory coast or Mongolia or Tunisia or Djibouti or Morocco or Ukraine or Egypt or Myanmar or Uzbekistan or El Salvador or Nicaragua or Vanuatu or Ghana or Nigeria or Vietnam or Guatemala or Pakistan or West Bank or Gaza or Honduras or Papua New Guinea or Yemen or India or Philippines or Zambia or Indonesia or Samoa or Kenya or sao tome or Principe) not african american*).mp. (896045) |

| | |
|---|--|
| 8 | 6 and 7 (9636) |
| 9 | (trial or randomized or randomised or (random* adj2 (assign* or allocat*)) or ((control or intervention) adj (arm* or group*)) or quasi-experimental).mp. or ((controlled or study) adj ("before and after" or "before after")).ti,ab,kf. or (((systematic or scoping or integrative) and review).ti. and trials.ti,ab,kf.) (1735758) |
| 10 | 8 and 9 (789) |
| 11 | limit 8 to (clinical trial, all or meta-analysis) (385) |
| 12 | 10 or 11 (826) |
| 13 | limit 12 to yr="1990 -Current" (793) |
| Database: Embase <1974 to 2019 April 11> | |
| 1 | reproductive health/ or sexual health/ or maternal welfare/ or sexual behavior/ or adolescent sexual behavior/ or sexual education/ or sexual counseling/ or exp domestic violence/ or exp rape/ or exp sexually transmitted disease/ or unwanted pregnancy/ or adolescent pregnancy/ or induced abortion/ or illegal abortion/ or exp female genital mutilation/ or exp birth control/ or reproductive behavior/ (436371) |
| 2 | (sexual health or reproductive health or sex* behavio?r* or ((early or adolescen* or teen* or unintended or accidental or unwanted) adj pregnanc*) or ((domestic or partner or spous* or wife or wives or husband*) adj3 (violen* or abuse*)) or rape or ((unprotected or unsafe or safe) adj (sex* or intercourse)) or genital mutilation or female circumcision or clitorrectomy or sex education or sex counseling or ((sexually transmitted or hiv or aids or acquired immun* or syphilis or gonorrhea or chlamydia or genital herpes) adj3 (prevent* or (risk* adj3 behavio?r*))))).ti,ab,kw. (147587) |
| 3 | ((((spacing or timing or interval*) adj3 (pregnanc* or birth)) or family planning or contracept* or birth control or condom* or ((early or forced or teen* or adolescen*) adj3 (marriage or married)) or ((safe* or unsafe or rate*) adj abortion*)).ti,ab,kw. or exp Menstrual Cycle/ or ((menstruation or menstrual or female* or women*) adj3 (hygiene or sanitary or sanitation)).ti,ab,kw. (206385) |
| 4 | 1 or 2 or 3 (621207) |
| 5 | child health care/ or (teen* or adolescen* or youth or girl* or boy or boys or (young adj2 (women* or men*))).ti,ab,kw. or adolescen*.jx. (718545) |
| 6 | 4 and 5 (62045) |
| 7 | (((((middle or low) adj2 income adj2 (countr* or nation* or region*)) or lmic* or developing countr* or africa* or Afghanistan or Guinea or Rwanda or Benin or Guinea-Bissau or Senegal or "Burkina Faso" or Haiti or Sierra Leone or Leone or Burundi or North Korea or Democratic People* Republic of Korea or Somalia or Central African Republic or Liberia or South Sudan or Chad or Madagascar or Tanzania or Comoros or Malawi or Togo or Congo or Mali or Uganda or Eritrea or Mozambique or Zimbabwe or Ethiopia or Nepal or Gambia or Niger or Armenia or Kiribati or Solomon Islands or Bangladesh or Kosovo or Sri Lanka or Bhutan or Kyrgyz* or |

| | |
|---|--|
| | Sudan or Bolivia or Laos or Swaziland or Cabo Verde or cape verde or Lesotho or Syrian or Cambodia or Mauritania or Tajikistan or Cameroon or Micronesia or Timor or Congo or Moldova or Tonga or Cote d'Ivoire or ivory coast or Mongolia or Tunisia or Djibouti or Morocco or Ukraine or Egypt or Myanmar or Uzbekistan or El Salvador or Nicaragua or Vanuatu or Ghana or Nigeria or Vietnam or Guatemala or Pakistan or West Bank or Gaza or Honduras or Papua New Guinea or Yemen or India or Philippines or Zambia or Indonesia or Samoa or Kenya or sao tome or Principe) not african american*).mp. (996474) |
| 8 | 6 and 7 (8730) |
| 9 | (trial* or randomized or randomised or (random* adj2 (assign* or allocat*)) or ((control or intervention) adj (arm* or group*)) or quasi-experimental).mp. or ((controlled or study) adj ("before and after" or "before after")).ti,ab,kw. (2920250) |
| 10 | trials.mp. and ((systematic or scoping or integrative) and review).m_titl. (43043) |
| 11 | 9 or 10 (2920250) |
| 12 | 8 and 11 (946) |
| 13 | limit 12 to yr="1990 -Current" (938) |
| Database: Global Health <1910 to 2019 Week 14> | |
| 1 | (sexual health or reproductive health or sex* behavio?r* or ((early or adolescen* or teen* or unintended or accidental or unwanted) adj pregnanc*) or ((domestic or partner or spous* or wife or wives or husband*) adj3 (violen* or abuse*)) or rape or abortion* or ((unprotected or unsafe or safe) adj (sex* or intercourse)) or genital mutilation or female circumcision or clitorrectomy or sex education or sex counseling or ((sexually transmitted or hiv or aids or acquired immun* or syphilis or gonorrhea or chlamydia or genital herpes) adj3 (prevent* or (risk* adj3 behavio?r*))))).mp. (67910) |
| 2 | ((((spacing or timing or interval*) adj3 (pregnancy or birth)) or family planning or birth control or contracept* or condom* or ((early or forced or teen* or adolescen*) adj3 (marriage or married)) or ((safe* or unsafe or rate*) adj abortion*) or (menstruation or menstrual or (female* women* adj3 (hygiene or sanitary or sanitation))))).mp. (35944) |
| 3 | 1 or 2 (88150) |
| 4 | (teen* or adolescen* or youth or girl* or boy or boys or young women or young men or (young adj2 (women* or men*))).mp. or (adolescen* or pediatric* or paediatric* or children*).jx. (199224) |
| 5 | 3 and 4 (14965) |
| 6 | (((((middle or low) adj2 income adj2 (countr* or nation* or region*)) or Imic* or developing countr* or africa* or Afghanistan or Guinea or Rwanda or Benin or Guinea-Bissau or Senegal or "Burkina Faso" or Haiti or Sierra Leone or Burundi or North Korea or Democratic People* Republic of Korea or Somalia or Central African Republic or Liberia or South Sudan or Chad or Madagascar or Tanzania or Comoros or Malawi or Togo or Congo or Mali or Uganda or Eritrea or Mozambique or Zimbabwe or Ethiopia or Nepal or Gambia or Niger or Armenia or Kiribati or Solomon Islands or Bangladesh or Kosovo or Sri Lanka or Bhutan or Kyrgyz* or Sudan or Bolivia or Laos or Swaziland or Cabo Verde or cape verde or Lesotho or Syrian or Cambodia or Mauritania or Tajikistan |

| | |
|---|--|
| | or Cameroon or Micronesia or Timor or Congo or Moldova or Tonga or Cote d'Ivoire or ivory coast or Mongolia or Tunisia or Djibouti or Morocco or Ukraine or Egypt or Myanmar or Uzbekistan or El Salvador or Nicaragua or Vanuatu or Ghana or Nigeria or Vietnam or Guatemala or Pakistan or West Bank or Gaza or Honduras or Papua New Guinea or Yemen or India or Philippines or Zambia or Indonesia or Samoa or Kenya or sao tome or Principe) not african american*).mp. (1016383) |
| 7 | 5 and 6 (7235) |
| 8 | (trial* or randomized or randomised or (random* adj2 (assign* or allocat*)) or ((control or intervention) adj (arm* or group*)) or quasi-experimental or ((controlled or study) adj ("before and after" or "before after"))).mp. or (((systematic or scoping or integrative) and review).ti. and trials.mp.) (281021) |
| 9 | 7 and 8 (617) |
| Database: PsycINFO <1806 to April Week 2 2019> | |
| 1 | reproductive health/ or exp psychosexual behavior/ or sex education/ or exp Sexually Transmitted Diseases/ or domestic violence/ or intimate partner violence/ or exp partner abuse/ or physical abuse/ or exp sexual abuse/ or Induced Abortion/ or Adolescent Pregnancy/ or exp Birth Control/ or circumcision/ or exp family planning/ (186551) |
| 2 | (sexual health or reproductive health or sex* behavio?r* or ((early or adolescen* or teen* or unintended or accidental or unwanted) adj pregnanc*) or ((domestic or partner or spous* or wife or wives or husband*) adj3 (violen* or abuse*)) or rape or ((safe or unsafe or rate*) adj2 abortion*) or ((unprotected or unsafe or safe) adj (sex* or intercourse)) or genital mutilation or female circumcision or clitorrectomy or sexually transmitted or hiv or aids or acquired immun* or syphilis or gonorrhea or chlamydia or genital herpes or sex education or sex counseling).ti,ab,id. (127101) |
| 3 | ((spacing or timing or interval*) adj3 (pregnanc* or birth)) or family planning or contracept* or birth control or condom* or ((early or forced or teen* or adolescen*) adj3 (marriage or married)) or ((safe* or unsafe or rate*) adj abortion*).ti,ab,id. or exp Menstrual Cycle/ or (menstruation or menstrual or (female* women* adj3 (hygiene or sanitary or sanitation))).ti,ab,id. (27097) |
| 4 | 1 or 2 or 3 (236339) |
| 5 | (teen* or adolescen* or youth or girl* or boy or boys or young women or young men or (young adj2 (women* or men*))).ti,ab,id. or (adolescen* or pediatric* or paediatric* or children*).jx. (405052) |
| 6 | 4 and 5 (40578) |
| 7 | ((((middle or low) adj2 income adj2 (countr* or nation* or region*)) or lmic* or developing countr* or africa* or Afghanistan or Guinea or Rwanda or Benin or Guinea-Bissau or Senegal or "Burkina Faso" or Haiti or Sierra or Leone or Burundi or North Korea or Democratic People* Republic of Korea or Somalia or Central African Republic or Liberia or South Sudan or Chad or Madagascar or Tanzania or Comoros or Malawi or Togo or Congo or Mali or Uganda or Eritrea or Mozambique or Zimbabwe or Ethiopia or Nepal or Gambia or Niger or Armenia or Kiribati or Solomon Islands or Bangladesh or Kosovo or Sri Lanka or Bhutan or Kyrgyz* or Sudan or Bolivia or Laos or Swaziland or Cabo Verde or cape verde or Lesotho or Syrian or Cambodia or Mauritania or Tajikistan |

| | |
|---|---|
| | or Cameroon or Micronesia or Timor or Congo or Moldova or Tonga or Cote d'Ivoire or ivory coast or Mongolia or Tunisia or Djibouti or Morocco or Ukraine or Egypt or Myanmar or Uzbekistan or El Salvador or Nicaragua or Vanuatu or Ghana or Nigeria or Vietnam or Guatemala or Pakistan or West Bank or Gaza or Honduras or Papua New Guinea or Yemen or India or Philippines or Zambia or Indonesia or Samoa or Kenya or sao tome or Principe) not african american*).mp. (106550) |
| 8 | 6 and 7 (3638) |
| 9 | limit 8 to ("0300 clinical trial" or "0830systematic review" or 1200 meta analysis or 2100 treatment outcome) (124) |
| 10 | (trial* or randomized or randomised or (random* adj2 (assign* or allocat*)) or ((control or intervention) adj (arm* or group*)) or quasi-experimental or ((controlled or study) adj ("before and after" or "before after"))).mp. or (((systematic or scoping or integrative) and review).ti. and trials.mp.) (289933) |
| 11 | 8 and 10 (311) |
| 12 | 9 or 11 (367) |
| Database: Cochrane Library (460 records retrieved) | |
| 1 | ((((sexual OR reproductive) NEAR/3 health) OR ((early OR adolescen* OR teen*) NEAR/2 pregnancy) OR ((domestic OR partner OR spous* OR wife OR wives OR husband*) n3 (violen* OR abuse*)) OR rape OR abortion* OR ((unprotected OR unsafe OR safe) NEAR/2 (sex* OR intercourse)) OR "genital mutilation" OR "female circumcision" OR clitorectomy OR "sex education" OR "sex counseling" OR ("sexually transmitted" OR hiv OR aids OR "acquired immun*" OR syphilis OR gonorrhea OR chlamydia OR "genital herpes") NEAR/3 (prevent* OR (risk* NEAR/3 behavior*))))):ti,ab,kw |
| 2 | ("family planning" or contracepti* or condom* or ((spacing or timing or interval*) near/3 (pregnancy or birth)) or ((early or forced or teen* or adolescen*) near/3 (marriage or married)) or ((safe* or unsafe or rate*) near/2 abortion*) or ((menstruation or menstrual or female* or women*) near/3 (hygiene or sanitary or sanitation))):ti,ab,kw |
| 3 | #1 OR #2 |
| 4 | (teen* or adolescen* or youth or girl* or boy or boys or (young near/2 (men* or women*)))):ti,ab |
| 5 | #3 AND #4 |
| 6 | ((((middle or low) near/2 income near/2 (countr* or nation* or region*) or lmic* or "developing countr*" or africa* or Afghanistan or Guinea or Rwanda or Benin or "Guinea-Bissau" or Senegal or "Burkina Faso" or Haiti or "Sierra Leone" or Burundi or "North Korea" or "Democratic People* Republic of Korea" or Somalia or "Central African Republic" or Liberia or "South Sudan" or Chad or Madagascar or Tanzania or Comoros or Malawi or Togo or Congo or Mali or Uganda or Eritrea or Mozambique or Zimbabwe or Ethiopia or Nepal or Gambia or Niger or Armenia or Kiribati or "Solomon Islands" or Bangladesh or Kosovo or "Sri Lanka" or Bhutan or Kyrgyz* or Sudan or Bolivia or Laos or Swaziland or "Cabo Verde" or "cape verde" or Lesotho or Syrian or Cambodia or Mauritania or Tajikistan or Cameroon or Micronesia or Timor or Congo or Moldova or Tonga or "Cote d'Ivoire" or "ivory coast" or Mongolia or Tunisia or Djibouti or Morocco or Ukraine or Egypt or Myanmar or Uzbekistan or "El Salvador" or |

| | |
|---|--|
| | Nicaragua or Vanuatu or Ghana or Nigeria or Vietnam or Guatemala or Pakistan or "West Bank" or Gaza or Honduras or "Papua New Guinea" or Yemen or India or Philippines or Zambia or Indonesia or Samoa or Kenya or "sao tome" or Principe) NOT "african american*"):ti,ab,kw |
| 7 | #5 AND #6 |
| Database: CINAHL Plus with Full-text (899 records retrieved) | |
| S1 | (MH "Reproductive Health") OR (MH "Sexual Health") OR (MH "Sex Education") OR (MH "Sexual Counseling") OR (MH "Domestic Violence+") OR (MH "Gender-Based Violence") OR (MH "Rape") OR (MH "Sexually Transmitted Diseases+") OR (MH "Pregnancy, Unwanted") OR (MH "Pregnancy in Adolescence+") OR (MH "Abortion, Induced") OR (MH "Abortion, Criminal") OR (MH "Circumcision, Female") OR (MH "Family Planning") OR (MH "Birth Intervals") OR (MH "Contraception+") |
| S2 | (sexual or reproductive) w3 health or (early or adolescen* or teen* or unintended or accidental or unwanted) w2 pregnanc* or (domestic or partner or spous* or wife or wives or husband*) n3 (violen* or abuse*) or rape or abortion* or (unprotected or unsafe or safe) w2 (sex* or intercourse) or "genital mutilation" or "female circumcision" or clitorrectomy or "sex education" or "sex counseling" or (sexually transmitted or hiv or aids or acquired immun* or syphilis or gonorrhea or chlamydia or genital herpes) n3 (prevent* or risk* w3 behavior*) |
| S3 | "family planning" or contracepti* or condom* or (spacing or timing or interval*) n3 (pregnanc* or birth) or (early or forced or teen* or adolescen*) n3 (marriage or married) or (safe* or unsafe or rate*) n2 abortion* or (menstruation or menstrual or female* or women*) n3 (hygiene or sanitary or sanitation) |
| S4 | S1 OR S2 OR S3 |
| S5 | MH "adolescent health services") or teen* or adolescen* or youth or girl* or boy or boys or young w2 (men* or women*) or SO(adolescen*) |
| S6 | S4 AND S5 |
| S7 | ((middle or low) w2 income w2 (countr* or nation* or region*) or Imic* or "developing countr*" or africa* or Afghanistan or Guinea or Rwanda or Benin or "Guinea-Bissau" or Senegal or "Burkina Faso" or Haiti or "Sierra Leone" or Burundi or "North Korea" or "Democratic People* Republic of Korea" or Somalia or "Central African Republic" or Liberia or "South Sudan" or Chad or Madagascar or Tanzania or Comoros or Malawi or Togo or Congo or Mali or Uganda or Eritrea or Mozambique or Zimbabwe or Ethiopia or Nepal or Gambia or Niger or Armenia or Kiribati or "Solomon Islands" or Bangladesh or Kosovo or "Sri Lanka" or Bhutan or Kyrgyz* or Sudan or Bolivia or Laos or Swaziland or "Cabo Verde" or "cape verde" or Lesotho or Syrian or Cambodia or Mauritania or Tajikistan or Cameroon or Micronesia or Timor or Congo or Moldova or Tonga or "Cote d'Ivoire" or "ivory coast" or Mongolia or Tunisia or Djibouti or Morocco or Ukraine or Egypt or Myanmar or Uzbekistan or "El Salvador" or Nicaragua or Vanuatu or Ghana or Nigeria or Vietnam or Guatemala or Pakistan or "West Bank" or Gaza or Honduras or "Papua New Guinea" or Yemen or India or Philippines or Zambia or Indonesia or Samoa or Kenya or "sao tome" or Principe) NOT "african american*" |

| | |
|---|--|
| S8 | S6 AND S7 |
| S9 | trial or randomized or randomised or random* n2 (assign* or allocat*) or (control or intervention) n2 (arm* or group*) or "quasi-experimental" or (controlled or study) n2 ("before and after" or "before after") OR (TI((systematic OR scoping OR integrative) AND review) and trials) |
| S10 | S8 AND S9 |
| Database: Sociological Abstracts (406 items retrieved)/Dissertations & Theses Global (404 items retrieved) | |
| 1 | noft(((sexual OR reproductive) NEAR/3 health) OR ((early OR adolescen* OR teen* or unintended or accidental or unwanted) NEAR/2 pregnanc*) OR ((domestic OR partner OR spous* OR wife OR wives OR husband*) NEAR/3 (violen* OR abuse*)) OR rape OR ((unprotected OR unsafe OR safe) NEAR/2 (sex* OR intercourse)) OR "genital mutilation" OR "female circumcision" OR clitorrectomy OR "sex education" OR "sex counseling" OR (("sexually transmitted" OR hiv OR aids OR "acquired immun*" OR syphilis OR gonorrhea OR chlamydia OR "genital herpes") NEAR/3 (prevent* OR "risk* behavior*")) OR "family planning" OR contracepti* OR condom* OR abortion OR ((spacing OR timing OR interval*) NEAR/3 (pregnanc* OR birth)) OR ((early OR forced OR teen* OR adolescen*) NEAR/3 (marriage OR married)) OR ((safe* OR unsafe OR rate*) NEAR/2 abortion*) OR ((menstruation OR menstrual OR female* OR women*) NEAR/3 (hygiene OR sanitary OR sanitation))) AND noft(((middle OR low) NEAR/2 income) OR Imic* OR "developing countr*" OR africa* OR Afghanistan OR Guinea OR Rwanda OR Benin OR "Guinea-Bissau" OR Senegal OR "Burkina Faso" OR Haiti OR "Sierra Leone" OR Burundi OR "North Korea" OR "Democratic People* Republic of Korea" OR Somalia OR "Central African Republic" OR Liberia OR "South Sudan" OR Chad OR Madagascar OR Tanzania OR Comoros OR Malawi OR Togo OR Congo OR Mali OR Uganda OR Eritrea OR Mozambique OR Zimbabwe OR Ethiopia OR Nepal OR Gambia OR Niger OR Armenia OR Kiribati OR "Solomon Islands" OR Bangladesh OR Kosovo OR "Sri Lanka" OR Bhutan OR Kyrgyz* OR Sudan OR Bolivia OR Laos OR Swaziland OR "Cabo Verde" OR "cape verde" OR Lesotho OR Syrian OR Cambodia OR Mauritania OR Tajikistan OR Cameroon OR Micronesia OR Timor OR Congo OR Moldova OR Tonga OR "Cote d'Ivoire" OR "ivory coast" OR Mongolia OR Tunisia OR Djibouti OR Morocco OR Ukraine OR Egypt OR Myanmar OR Uzbekistan OR "El Salvador" OR Nicaragua OR Vanuatu OR Ghana OR Nigeria OR Vietnam OR Guatemala OR Pakistan OR "West Bank" OR Gaza OR Honduras OR "Papua New Guinea" OR Yemen OR India OR Philippines OR Zambia OR Indonesia OR Samoa OR Kenya OR "sao tome" OR Principe) AND noft(teen* OR adolescen* OR youth OR girl* OR boy OR boys OR (young NEAR/2 (men* OR women*))) AND (trial OR randomized OR randomised OR (random* NEAR/2 (assign* OR allocat*)) OR ((control OR intervention) NEAR/2 (arm* OR group*)) OR "quasi-experimental" OR ((controlled OR study) NEAR/2 ("before and after" OR "before after"))) trial OR randomized OR randomised OR (random* NEAR/2 (assign* OR allocat*)) OR ((control OR intervention) NEAR/2 (arm* OR group*)) OR "quasi-experimental" OR ((controlled OR study) NEAR/2 ("before and after" OR "before after"))) NOT noft("african american*") |
| Database: Scopus | |

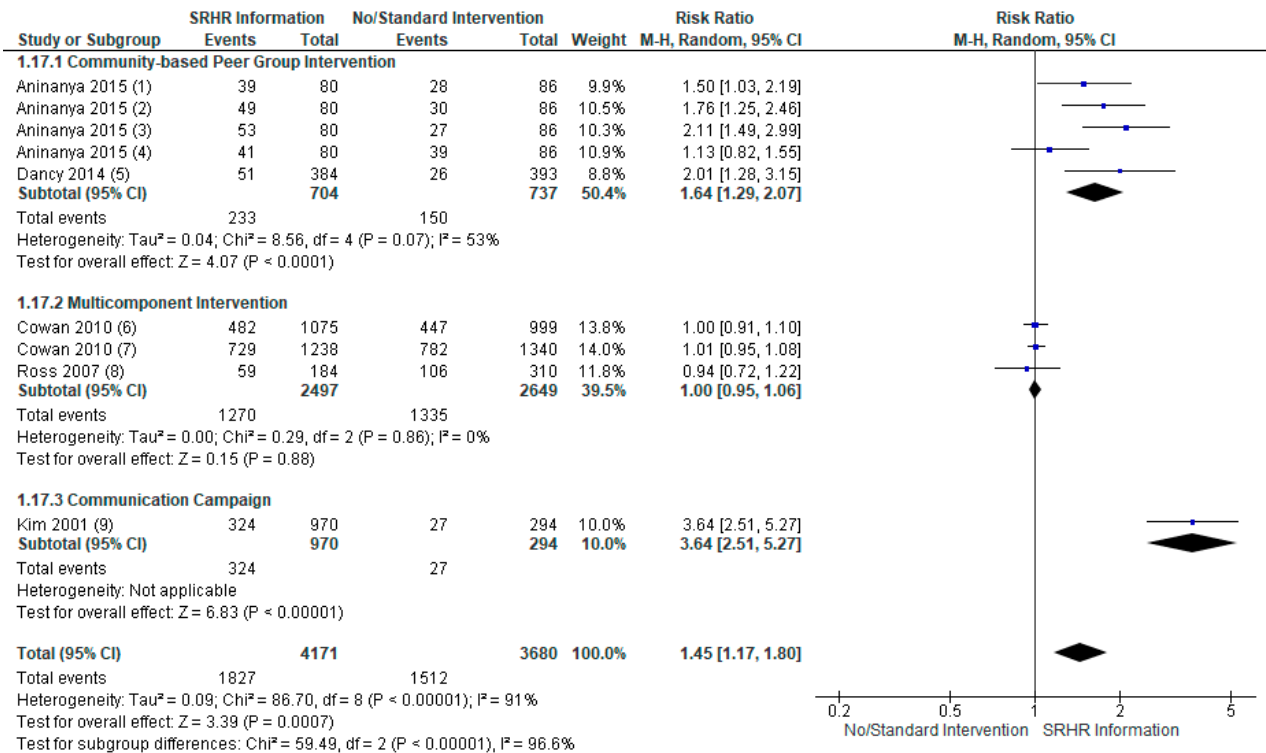
| | |
|--|--|
| 1 | (TITLE-ABS (((sexual OR reproductive) PRE/3 health) OR ((early OR adolescen* OR teen* or unintended or accidental or unwanted) PRE/2 pregnanc*) OR ((domestic OR partner OR spous* OR wife OR wives OR husband*) W/3 (violen* OR abuse*)) OR rape OR abortion* OR ((unprotected OR unsafe OR safe) PRE/2 (sex* OR intercourse)) OR "genital mutilation" OR "female circumcision" OR clitorrectomy OR "sex education" OR "sex counseling" OR (("sexually transmitted" OR hiv OR aids OR "acquired immun*" OR syphilis OR gonorrhea OR chlamydia OR "genital herpes") W/3 (prevent* OR "risk* behavior*")))) OR (TITLE-ABS("family planning" OR contracepti* OR condom* OR ((spacing OR timing OR interval*) W/3 (pregnanc* or birth)) OR ((early OR forced OR teen* OR adolescen*) W/3 (marriage OR married)) OR ((safe* OR unsafe OR rate*) W/2 abortion*) OR ((menstruation OR menstrual OR female* OR women*) W/3 (hygiene OR sanitary OR sanitation)))) AND TITLE-ABS(teen* OR adolescen* OR youth OR girl* OR boy OR boys OR (young PRE/2 (men* OR women*))) AND TITLE-ABS(((middle OR low) W/2 income) OR lmic* OR "developing countr*" OR africa* OR afghanistan OR guinea OR rwanda OR benin OR "Guinea-Bissau" OR senegal OR "Burkina Faso" OR haiti OR "Sierra Leone" OR burundi OR "North Korea" OR "Democratic People* Republic of Korea" OR somalia OR "Central African Republic" OR liberia OR "South Sudan" OR chad OR madagascar OR tanzania OR comoros OR malawi OR togo OR congo OR mali OR uganda OR eritrea OR mozambique OR zimbabwe OR ethiopia OR nepal OR gambia OR niger OR armenia OR kiribati OR "Solomon Islands" OR bangladesh OR kosovo OR "Sri Lanka" OR bhutan OR kyrgyz* OR sudan OR bolivia OR laos OR swaziland OR "Cabo Verde" OR "cape verde" OR lesotho OR syrian OR cambodia OR mauritania OR tajikistan OR cameroon OR micronesia OR timor OR congo OR moldova OR tonga OR "ivory coast" OR mongolia OR tunisia OR djibouti OR morocco OR ukraine OR egypt OR myanmar OR uzbekistan OR "El Salvador" OR nicaragua OR vanuatu OR ghana OR nigeria OR vietnam OR guatemala OR pakistan OR "West Bank" OR gaza OR honduras OR "Papua New Guinea" OR yemen OR india OR philippines OR zambia OR indonesia OR samoa OR kenya OR "sao tome" OR principe) AND TITLE-ABS-KEY(trial OR randomized OR randomised OR (random* PRE/2 (assign* or allocat*)) OR ((control or intervention) PRE/2 (arm* OR group*)) OR "quasi-experimental" OR pilot OR ((controlled OR study) PRE/2 ("before and after" OR "before after")))) AND NOT TITLE-ABS("african american*") |
| Database: Web of Science Core Collection (1116 items retrieved) | |
| 1 | TS= (((sexual OR reproductive) near/3 health) OR ((early OR adolescen* OR teen* or unintended or accidental or unwanted) near/2 pregnanc*) OR ((domestic OR partner OR spous* OR wife OR wives OR husband*) near/3 (violen* OR abuse*)) OR rape OR abortion* OR ((unprotected OR unsafe OR safe) near/2 (sex* OR intercourse)) OR "genital mutilation" OR "female circumcision" OR clitorrectomy OR "sex education" OR "sex counseling" OR (("sexually transmitted" OR hiv OR aids OR "acquired immun*" OR syphilis OR gonorrhea OR chlamydia OR "genital herpes") near/3 (prevent* OR "risk* behavior*"))) |

| | |
|---|---|
| 2 | TS=("family planning" OR contracepti* OR condom* OR ((spacing OR timing OR interval*) near/3 (pregnancy or birth)) OR ((early OR forced OR teen* OR adolescen*) near/3 (marriage OR married)) OR ((safe* OR unsafe OR rate*) near/2 abortion*) OR ((menstruation OR menstrual OR female* OR women*) near/3 (hygiene OR sanitary OR sanitation))) |
| 3 | #1 OR #2 |
| 4 | TS=(teen* OR adolescen* OR youth OR girl* OR boy OR boys OR (young near/2 (men* OR women*))) |
| 5 | #3 AND #4 |
| 6 | TS=(((middle OR low) near/2 income) OR lmic* OR "developing countr*" OR africa* OR afghanistan OR guinea OR rwanda OR benin OR "Guinea-Bissau" OR senegal OR "Burkina Faso" OR haiti OR "Sierra Leone" OR burundi OR "North Korea" OR "Democratic People* Republic of Korea" OR somalia OR "Central African Republic" OR liberia OR "South Sudan" OR chad OR madagascar OR tanzania OR comoros OR malawi OR togo OR congo OR mali OR uganda OR eritrea OR mozambique OR zimbabwe OR ethiopia OR nepal OR gambia OR niger OR armenia OR kiribati OR "Solomon Islands" OR bangladesh OR kosovo OR "Sri Lanka" OR bhutan OR kyrgyz* OR sudan OR bolivia OR laos OR swaziland OR "Cabo Verde" OR "cape verde" OR lesotho OR syrian OR cambodia OR mauritania OR tajikistan OR cameroon OR micronesia OR timor OR congo OR moldova OR tonga OR "ivory coast" OR mongolia OR tunisia OR djibouti OR morocco OR ukraine OR egypt OR myanmar OR uzbekistan OR "El Salvador" OR nicaragua OR vanuatu OR ghana OR nigeria OR vietnam OR guatemala OR pakistan OR "West Bank" OR gaza OR honduras OR "Papua New Guinea" OR yemen OR india OR philippines OR zambia OR indonesia OR samoa OR kenya OR "sao tome" OR principe) #7 #5 AND #6 |
| 7 | TS=(trial OR randomized OR randomised OR (random* near/2 (assign* OR allocat*)) OR ((control or intervention) near/2 (arm* OR group*)) OR "quasi-experimental" OR ((controlled OR study) near/2 ("before and after" OR "before after"))) |
| 8 | #7 AND #8 |
| 9 | TS=("african american*") |
| 10 | #9 NOT #10 |
| Database: Centre for Reviews and Dissemination Databases (Database of Abstracts of Reviews of Effects; Health Technology Assessment Database and Economic Evaluation Database) | |
| 1 | sexual health AND low income AND adolescen* |
| 2 | reproductive health |

| | |
|--|---|
| | AND middle income AND adolescen* |
|--|---|

Supplementary File S2

Figure S1: Impact of Adolescents Sexual and Reproductive Health and Rights (ASRHR) Information on the Uptake of SRHR Services by the Adolescents



Footnotes

(1) Antenatal care services

(2) Peri/post natal services

(3) STI management

(4) HIV Counseling and Testing

(5) Uptake of HIV testing

(6) Multicomponent intervention (Males) - youth program for in and out of school children by peer educators, 22-session community based intervention for parents &...

(7) Multicomponent intervention (Females) - youth program for in and out of school children by peer educators, 22-session community based intervention for parents &...

(8) Went to health facility for more recent STI as a result of Multicomponent intervention - Community activities, teacher led and peer assisted sexual health education,...

(9) Youth Campaign: Posters, leaflets, newsletters, Radio shows, Launch events, dramas, peer education, hot line.

Figure S2: Impact of Adolescents Sexual and Reproductive Health and Rights (ASRHR) Information on Adolescents Overall Knowledge Related to SRHR

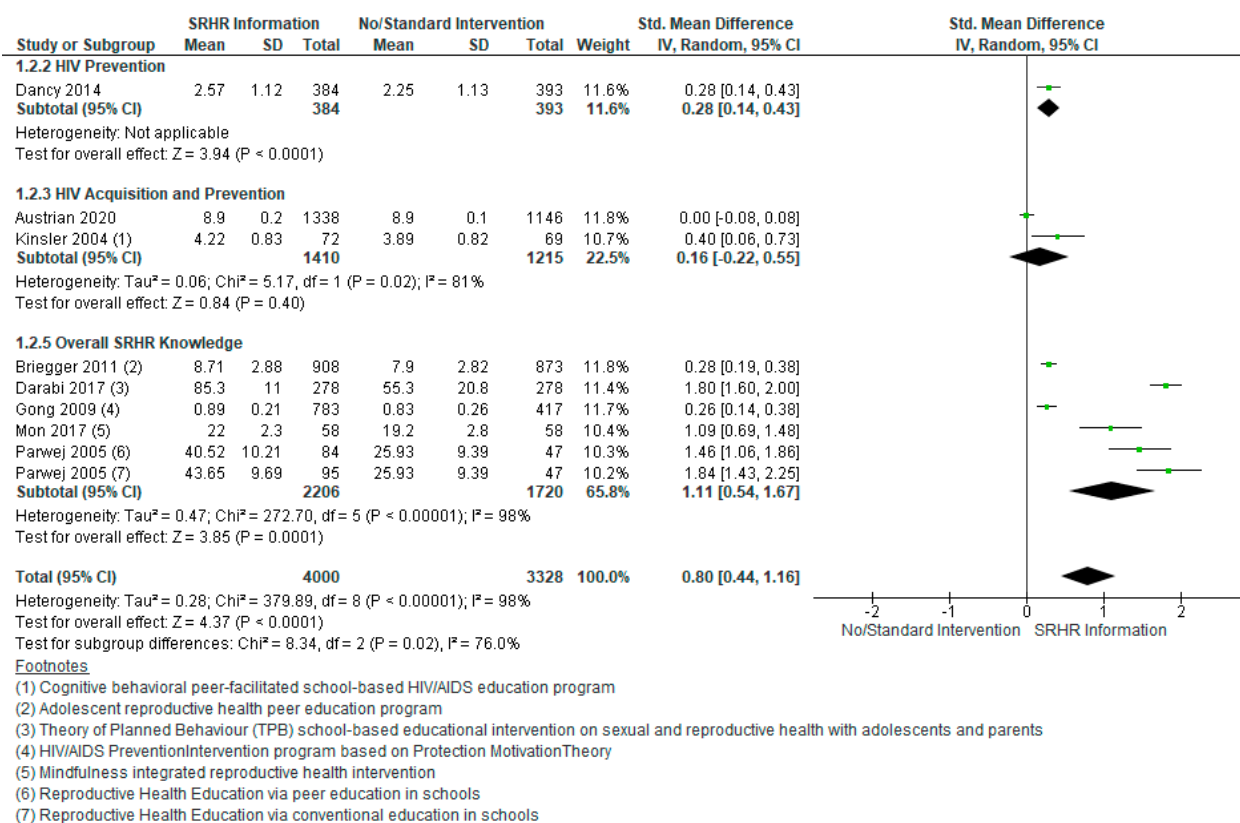
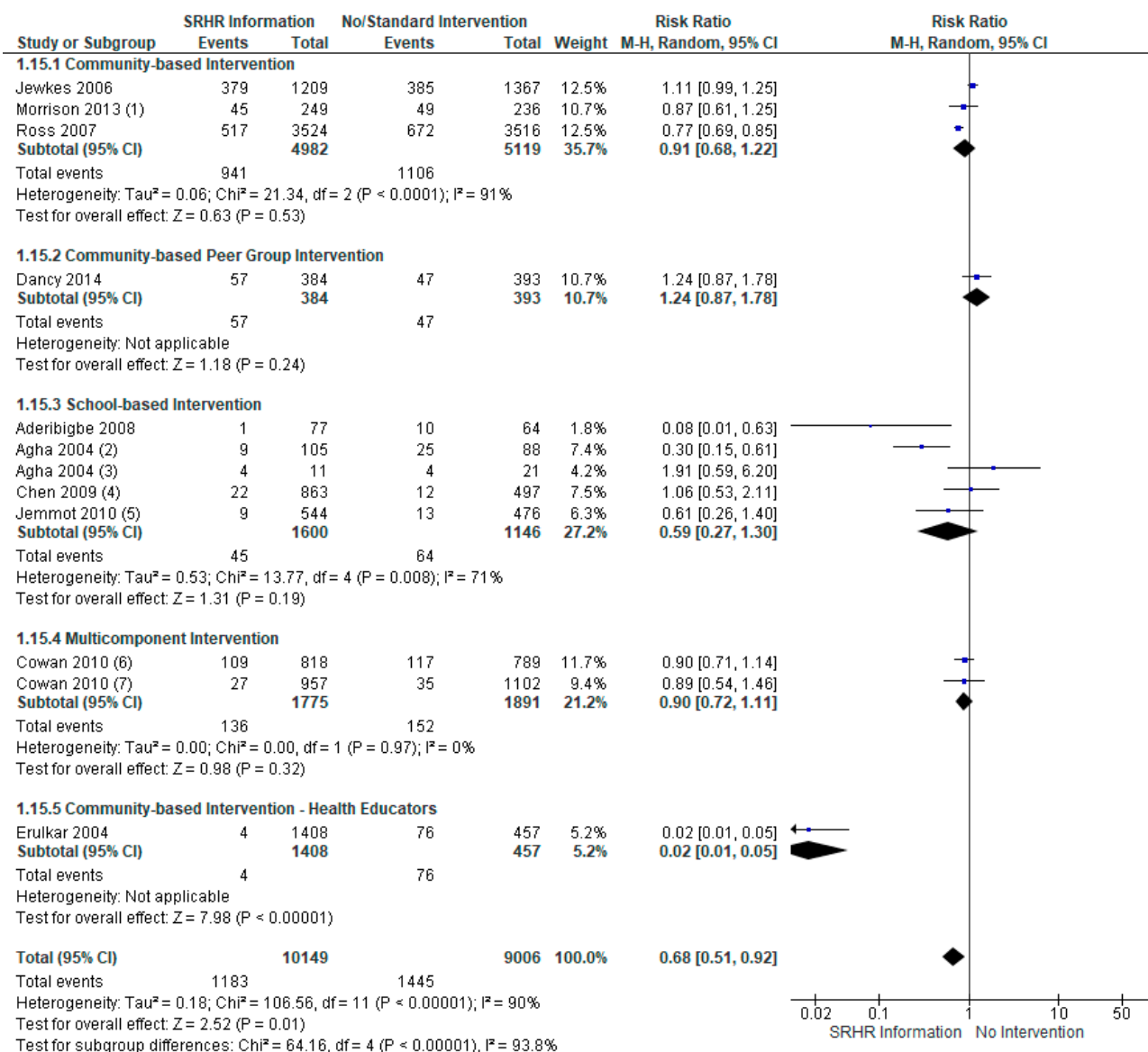


Figure S3: Impact of Adolescents Sexual and Reproductive Health and Rights (ASRHR) Information on Adolescents Behavior Towards Sexual Practice – Multiple Sexual Partners



Footnotes

(1) post-intervention 12 months follow up

(2) multiple regular partners.

(3) multiple casual partners

(4) post intervention 12 month follow up

(5) Follow up after 12months

(6) Multicomponent intervention (Males) - youth program for in and out of school children by peer educators, 22-session community based intervention for...

(7) Multicomponent intervention (Females) - youth program for in and out of school children by peer educators, 22-session community based intervention for...