

## Process intensification of dichlorodiphenyltrichloroethane detection methods for determining trace concentrations in soils

Jinghan Zhao, Stephen Vanderburgt, Rafael M Santos and Yi Wai Chiang\*.

School of Engineering, University of Guelph, 50 Stone Road East, Guelph, Ontario,  
Canada, N1G 2W1

\*Corresponding author: [chiange@uoguelph.ca](mailto:chiange@uoguelph.ca), 1-519-824-4120 x58217

---

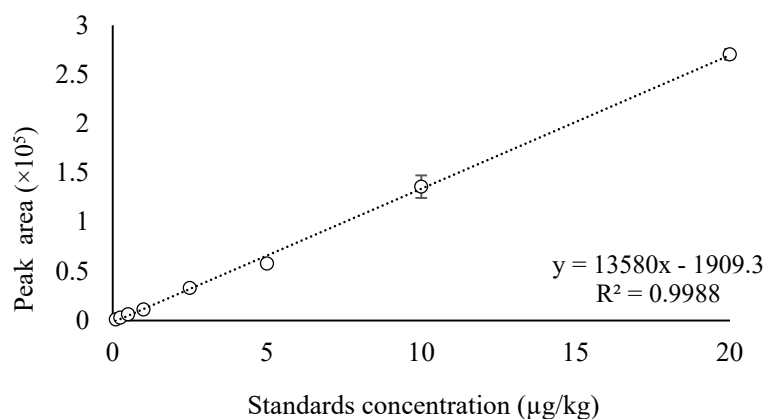


Figure S1. The calibration curve of standard DDT solutions

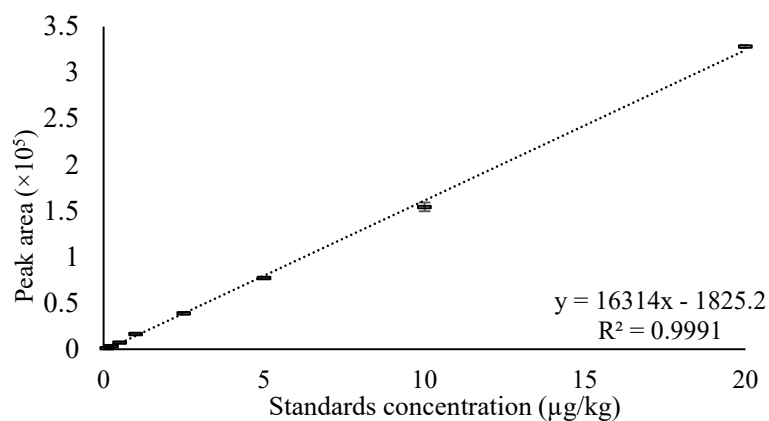
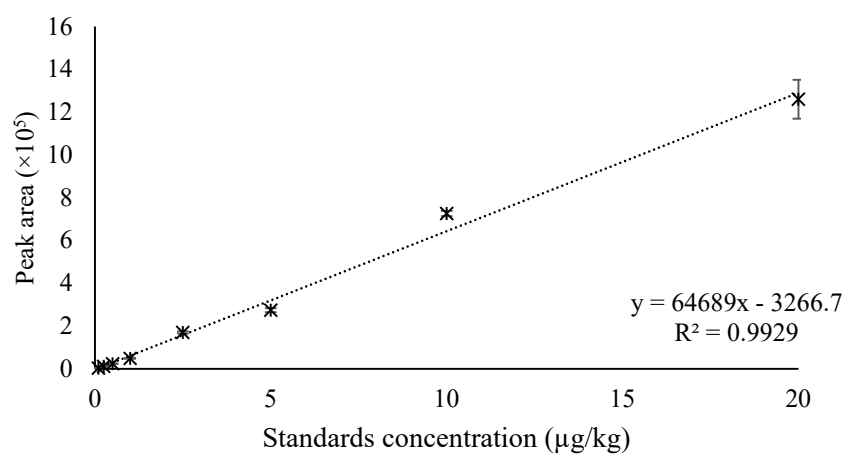


Figure S2. The calibration curve of standard DDD solutions

## Supplementary Material



**Figure S3. The calibration curve of standard DDE solutions**