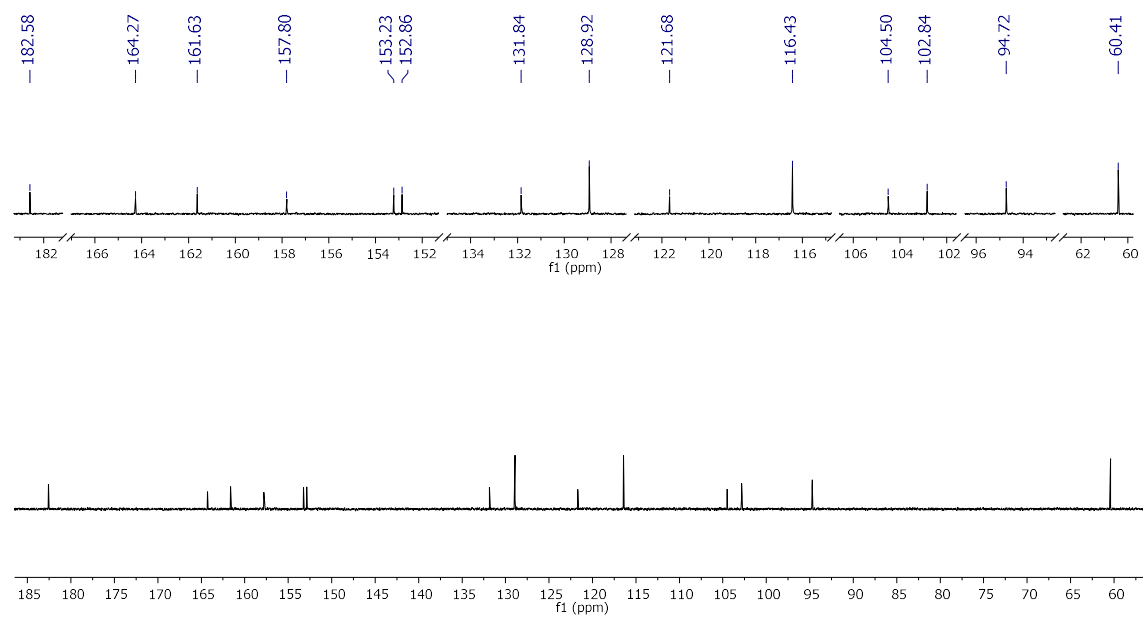
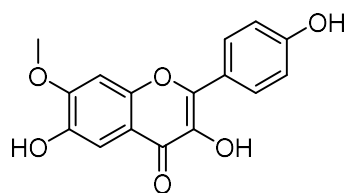


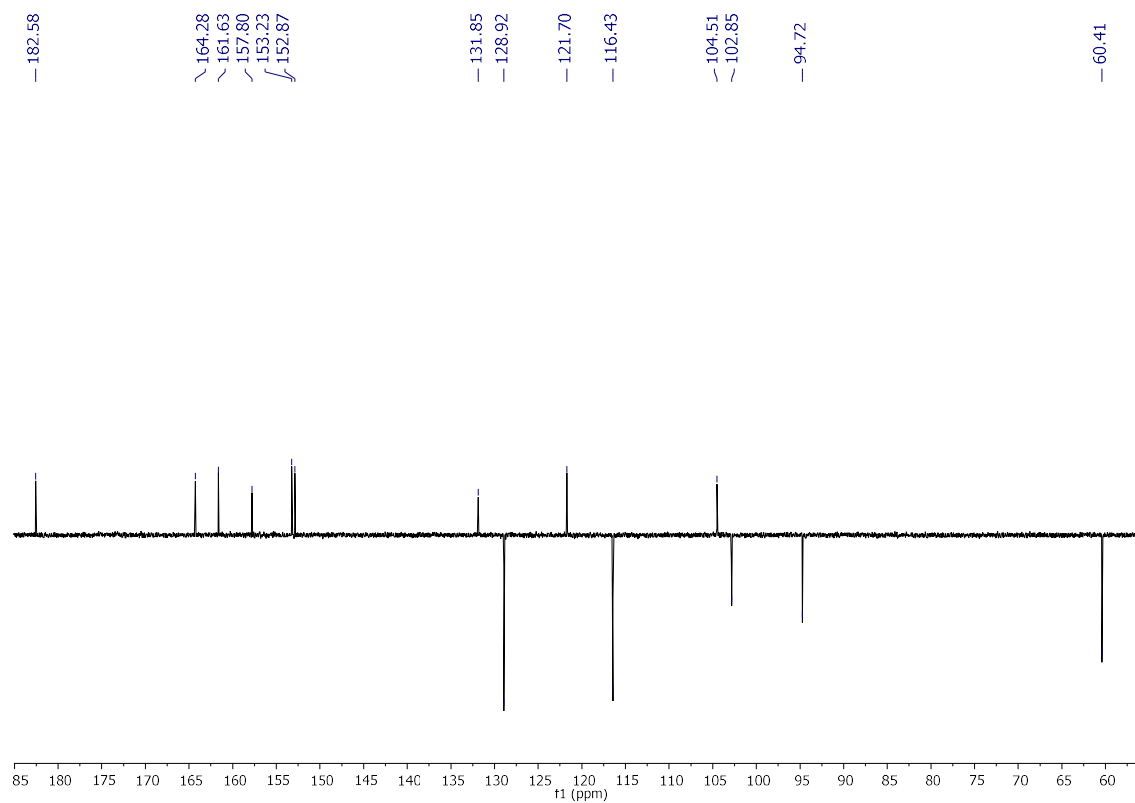
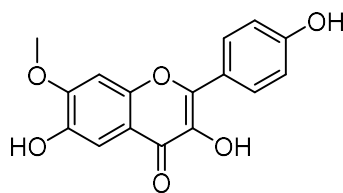
## Supplementary Material

### S1: NMR spectra

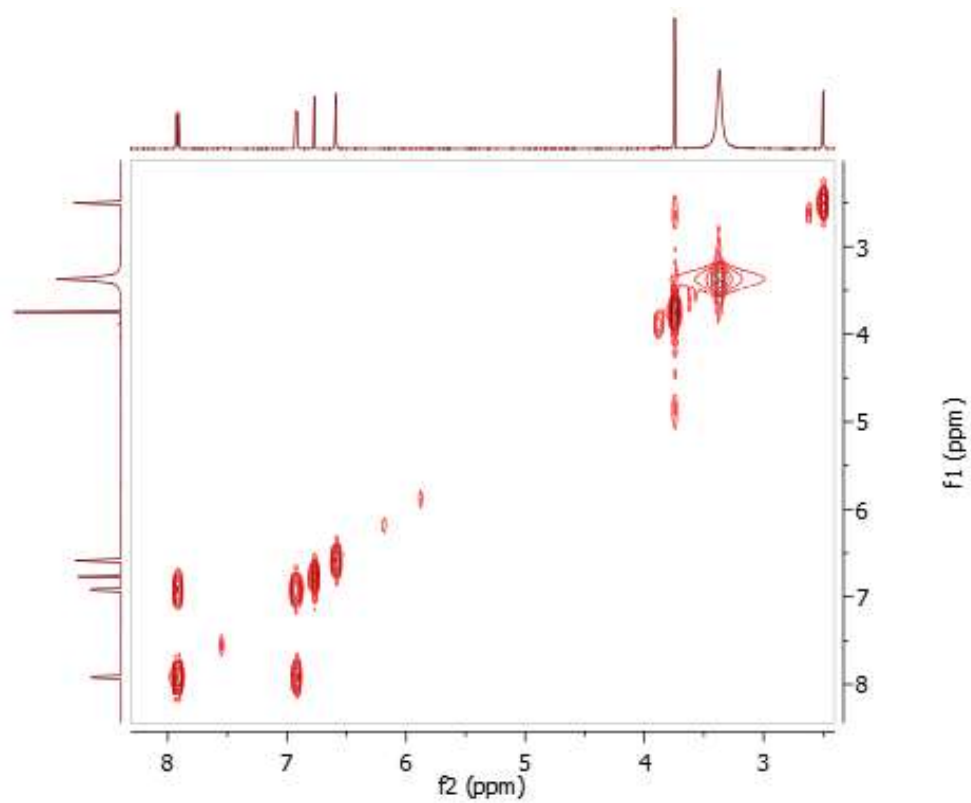
#### S1A: C-13 NMR



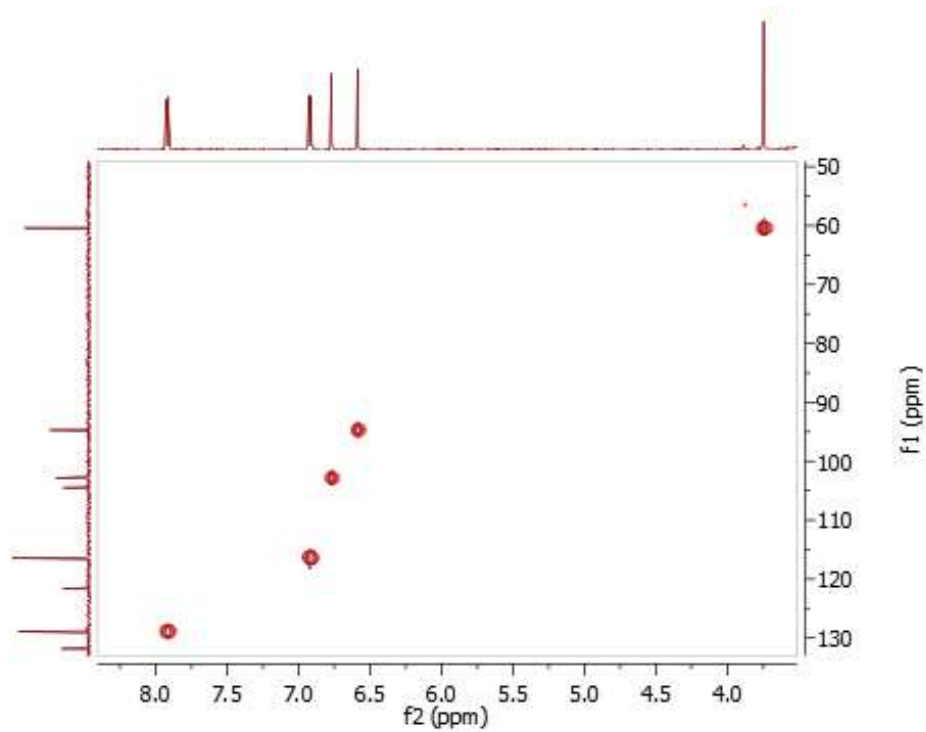
S1B: C-13 APT



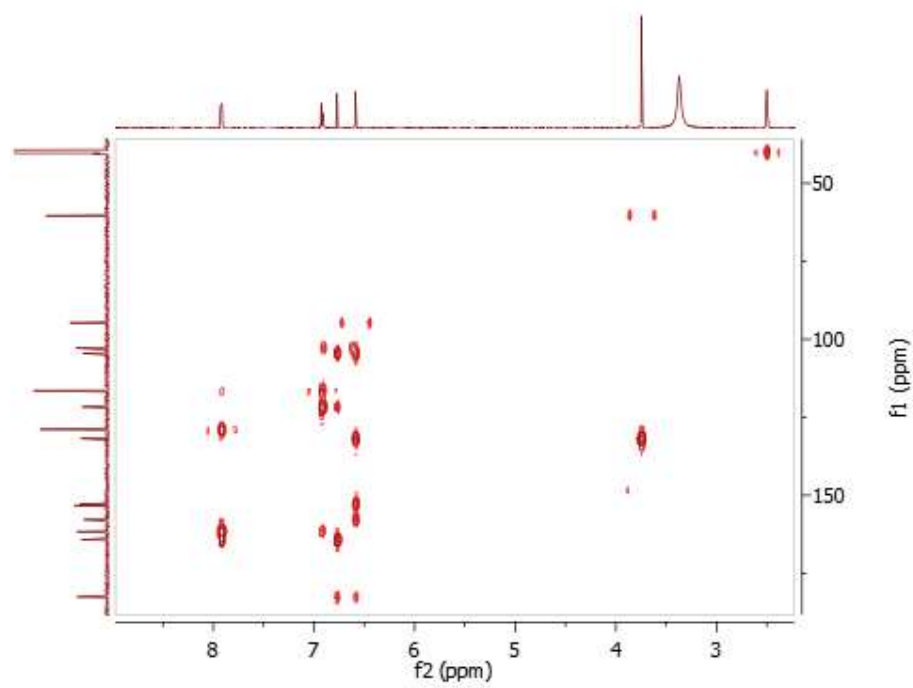
S1C: 2D COSY



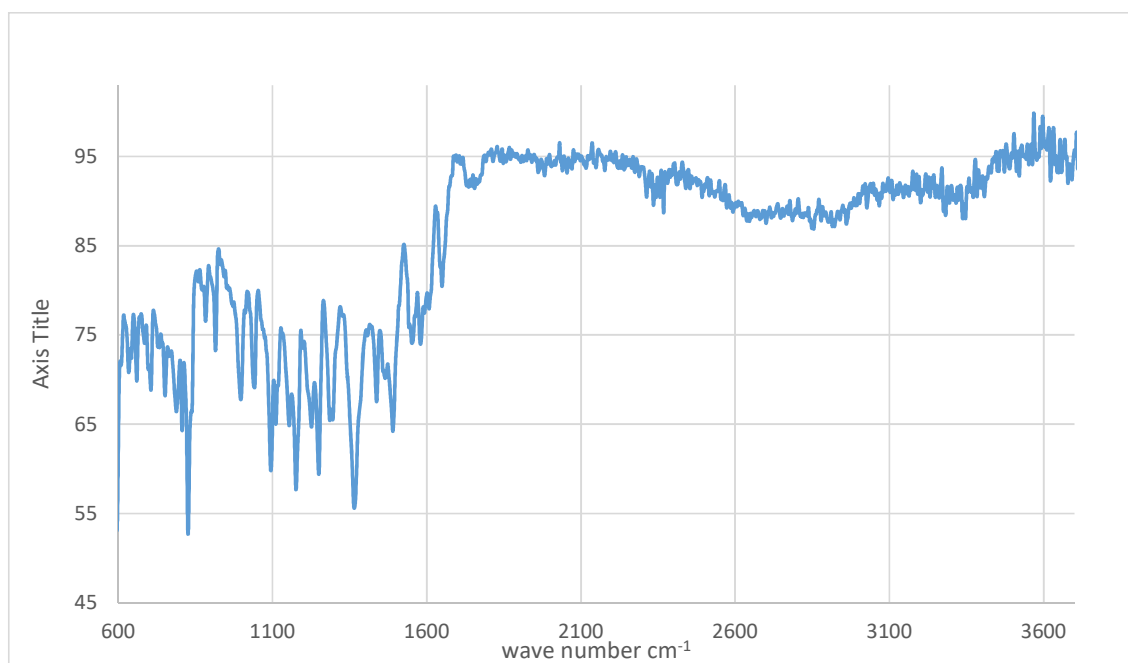
S1D: 2D HSQC



**S1E: 2D HMBC**



**S2: FTIR spectrum of powder**

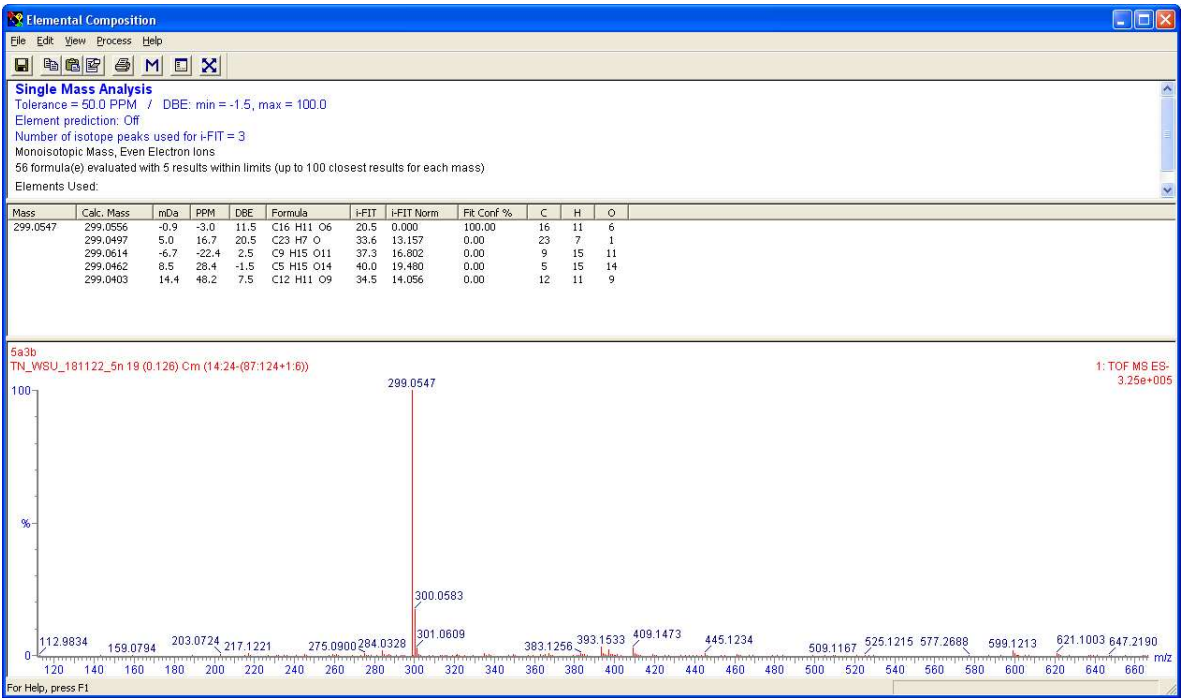


S3: Mass spectra

S3A: HRMS ES+



S3B: HRMS ES-



Mass spectrum showing relative intensity (cps) versus m/z. The base peak is at m/z 299.0. Other significant peaks are labeled at m/z 284.0, 285.1, 286.1, 300.1, 301.0, 302.1, 321.2, 325.3, 329.0, 345.1, 365.2, 367.2, 383.2, 393.2, 394.2, and 396.1.