

Immobilization of Cellulolytic Enzymes in Accurel® MP1000

Julia R. S. Baruque¹, Adriano Carniel¹, Julio Cesar S. Sales¹, Bernardo D. Ribeiro¹, Rodrigo P. do Nascimento¹ and Ivaldo Itabaiana Jr.^{1,*}

SUPPORTING INFORMATION

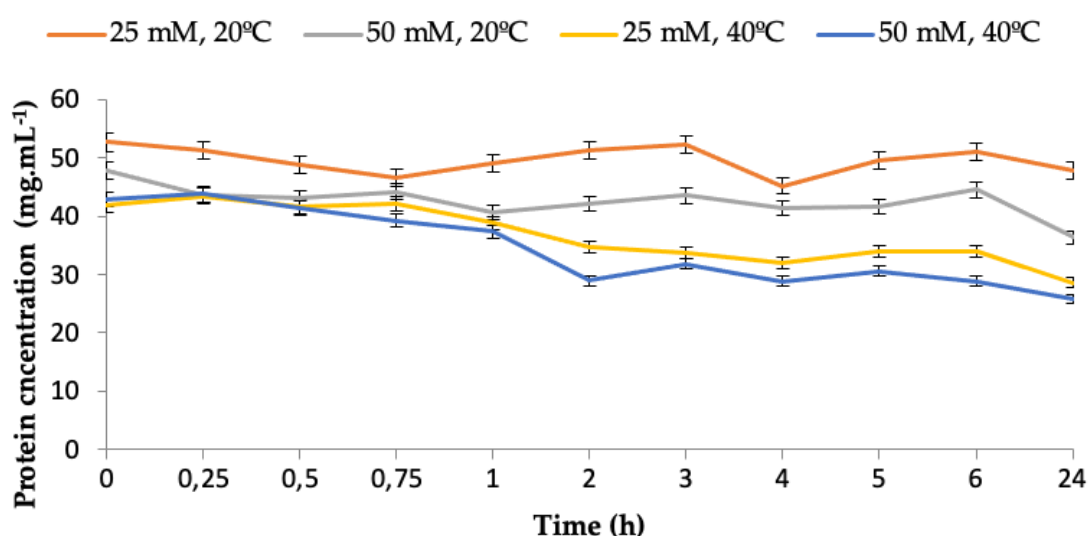


Figure S1. Total Protein concentration showed by *Celluclast*® 1.5L cocktail immobilization in Accurel® MP 1000 through the time in each studied condition.

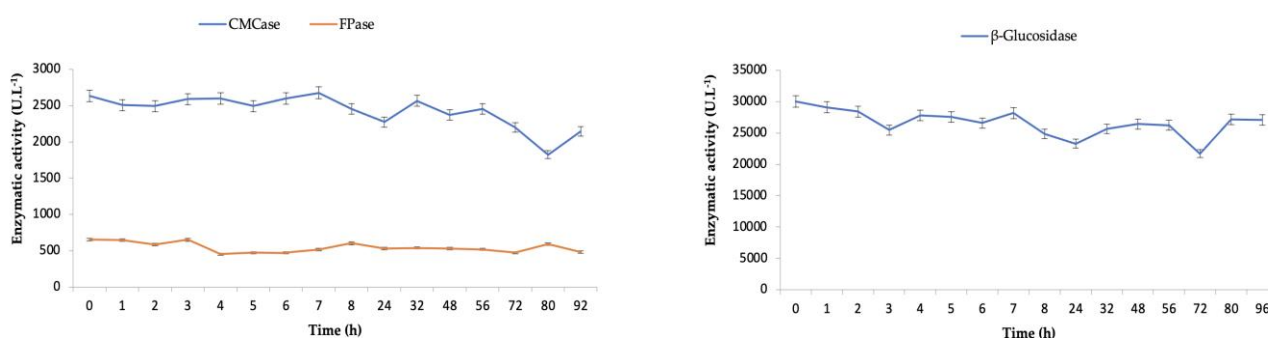


Figure S2. Residual enzyme activity in the supernatant during immobilization of *Celluclast*® 1.5 L cocktail in Accurel MP1000. Immobilization conditions: 45 mg. mL⁻¹ of enzymatic extract in 50mL of 50 mM citrate buffer at 40 °C and 100 rpm.