

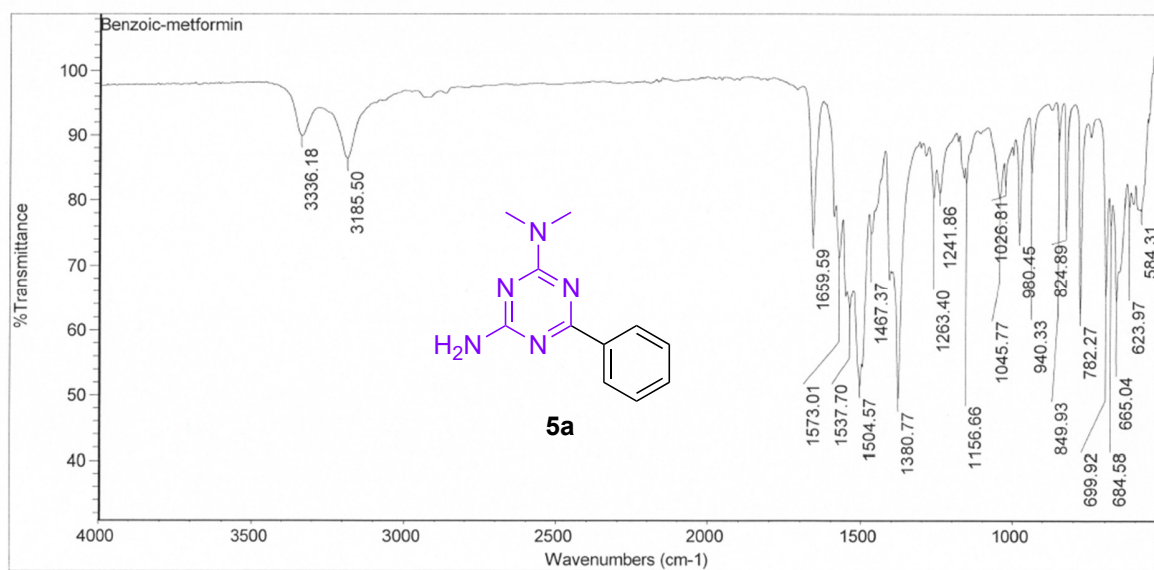
Supporting Information

**Microwave-Assisted Synthesis of Tri-substituted 1,3,5- Triazines from
Metformin using Benzotriazole Chemistry**

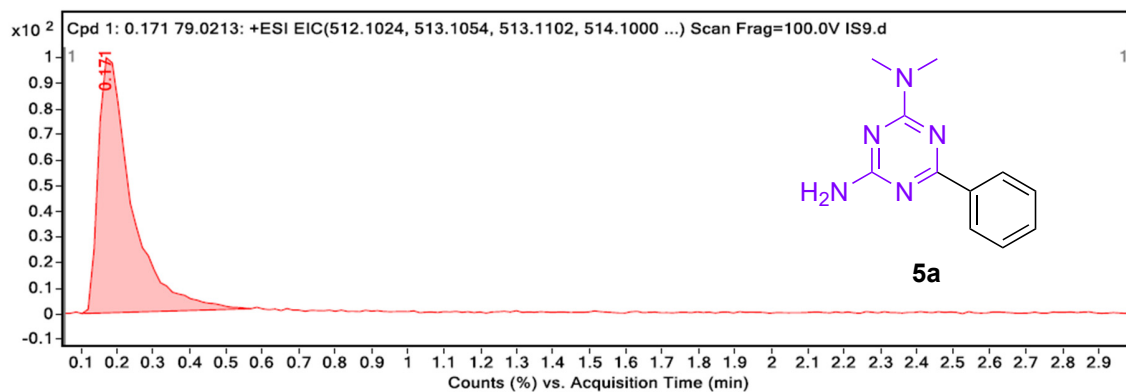
Siva S. Panda*, Eyana Thomas and Ashley M. Pham

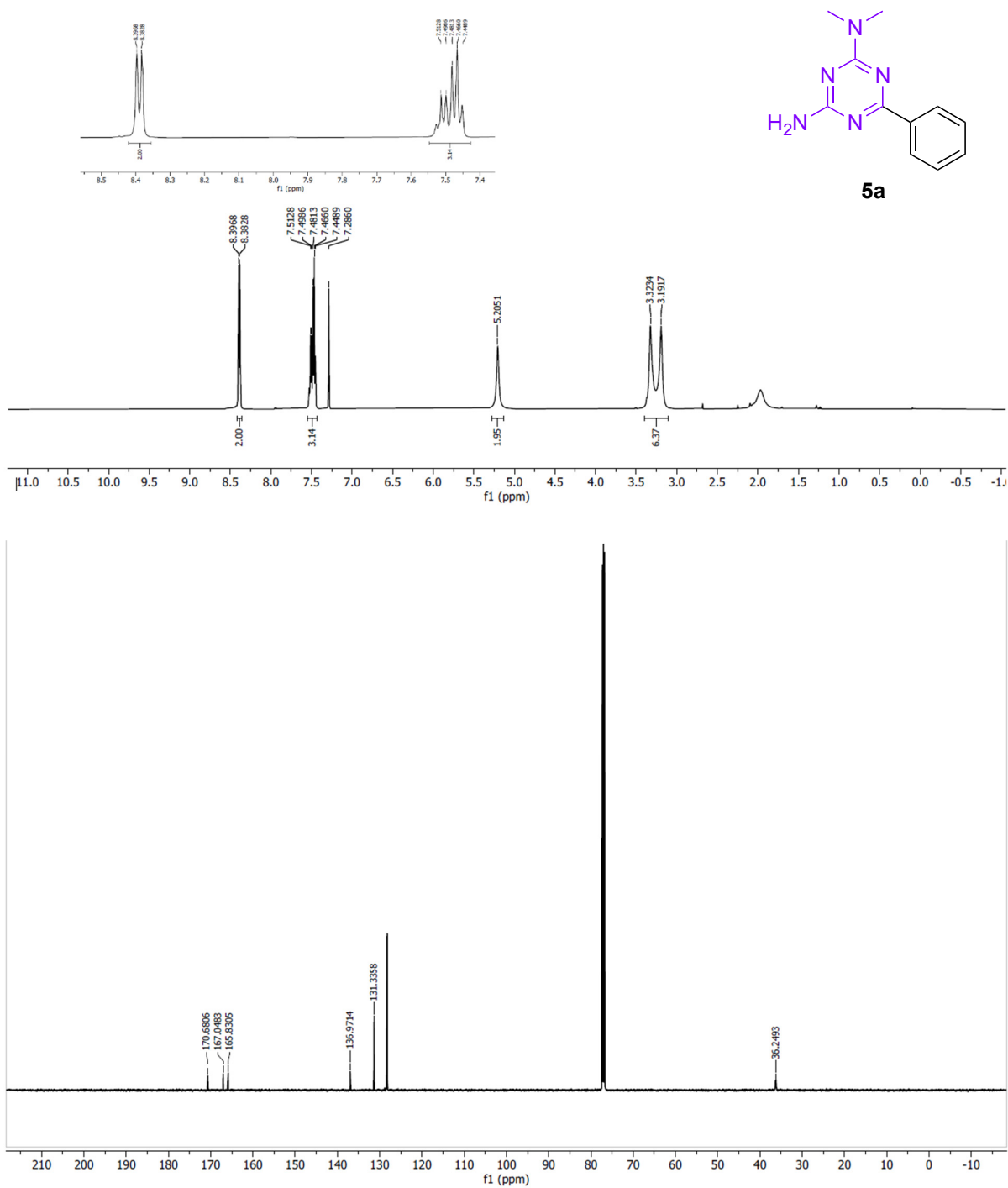
Department of Chemistry and Physics, Augusta University, Augusta, GA 30912, USA

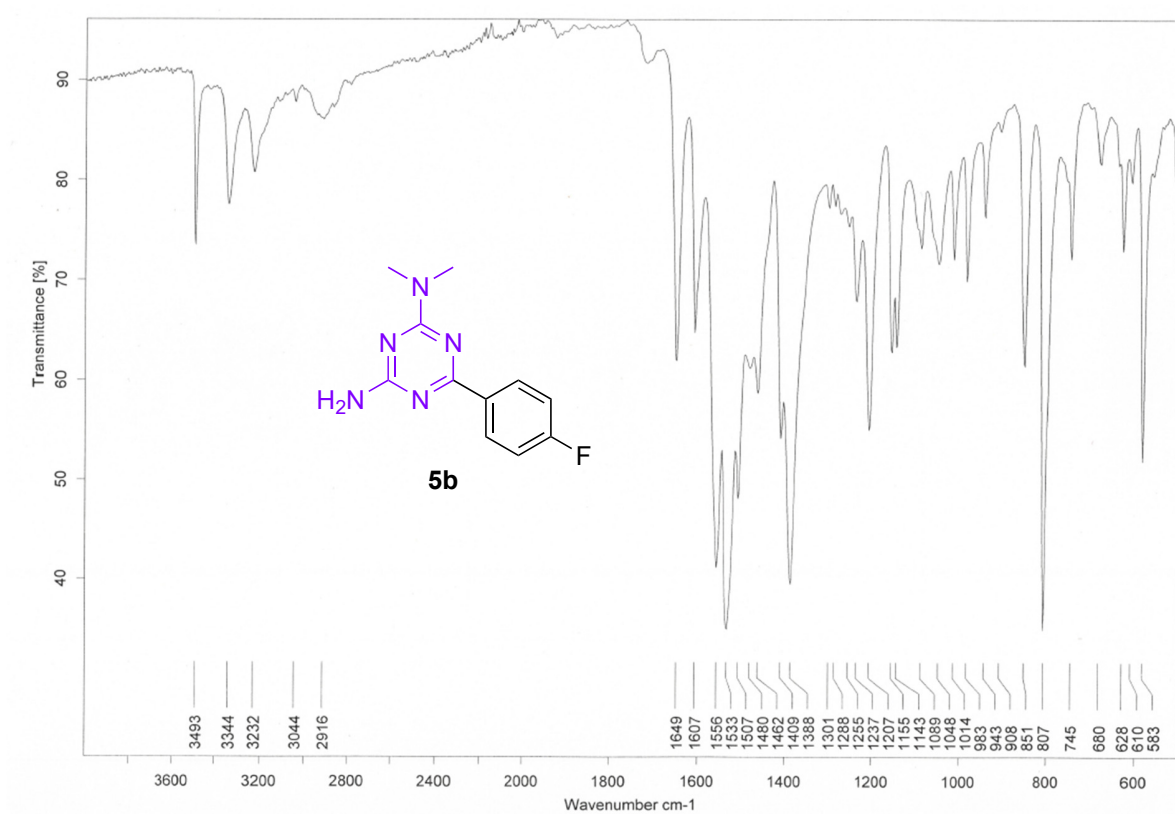
*Correspondence: author, E-mail: sipanda@augusta.edu, sspanda12@gmail.com



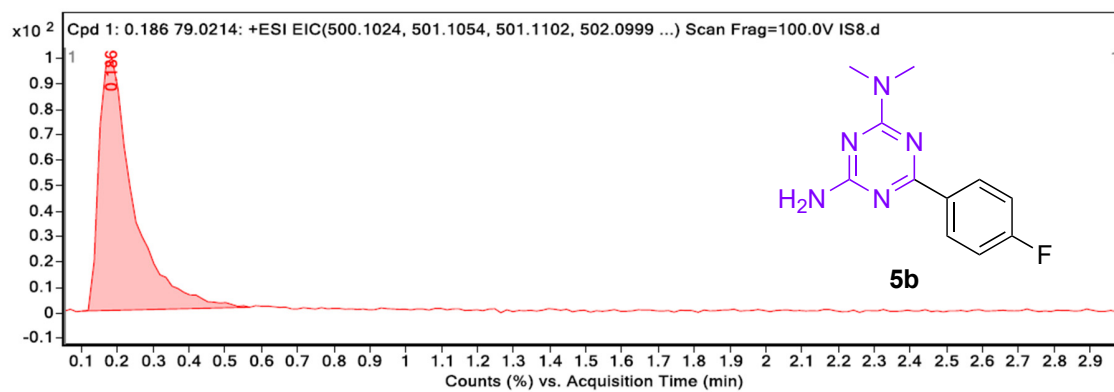
Compound Label	<i>m/z</i>	RT	Algorithm	Calcd. Mass
Cpd 1: 0.171 79.0213	215.1179	0.171	Find By Formula	215.1171

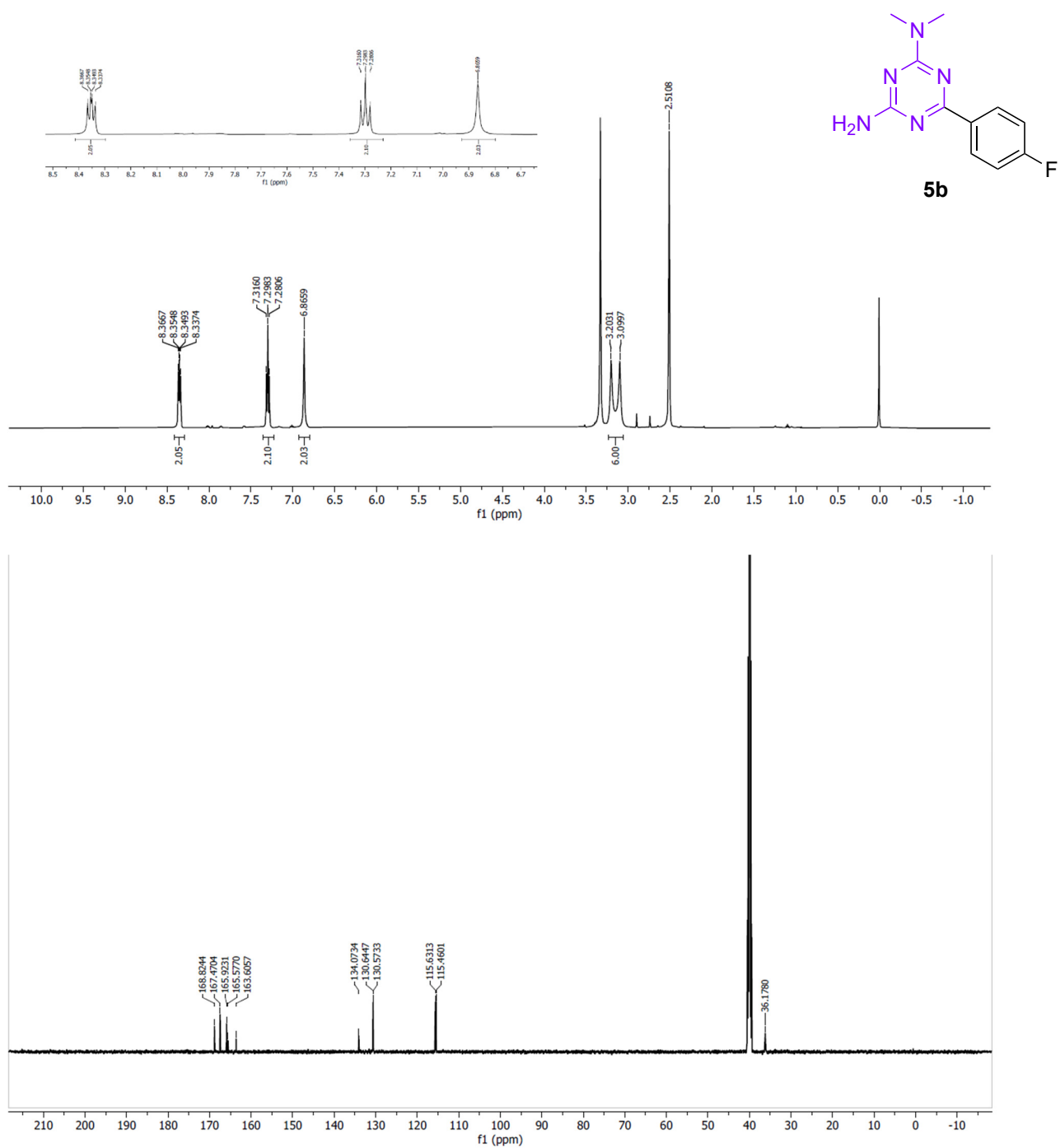


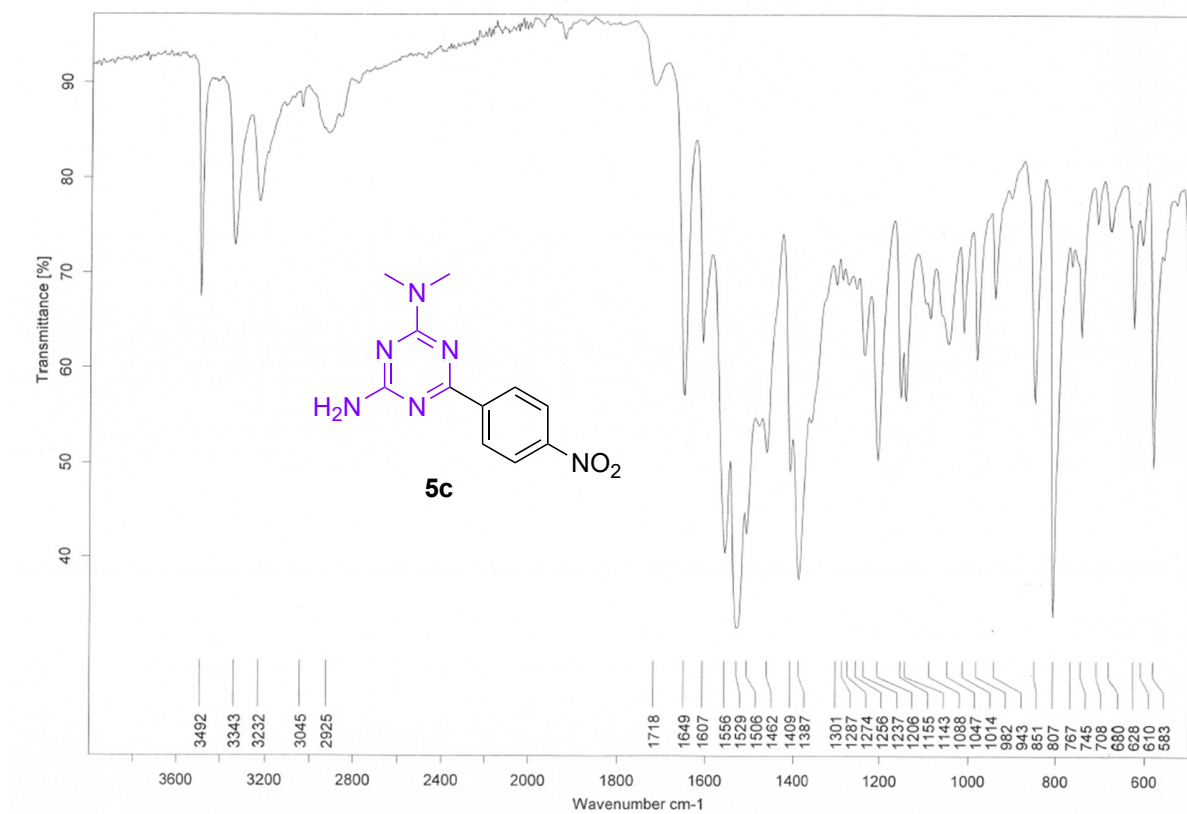




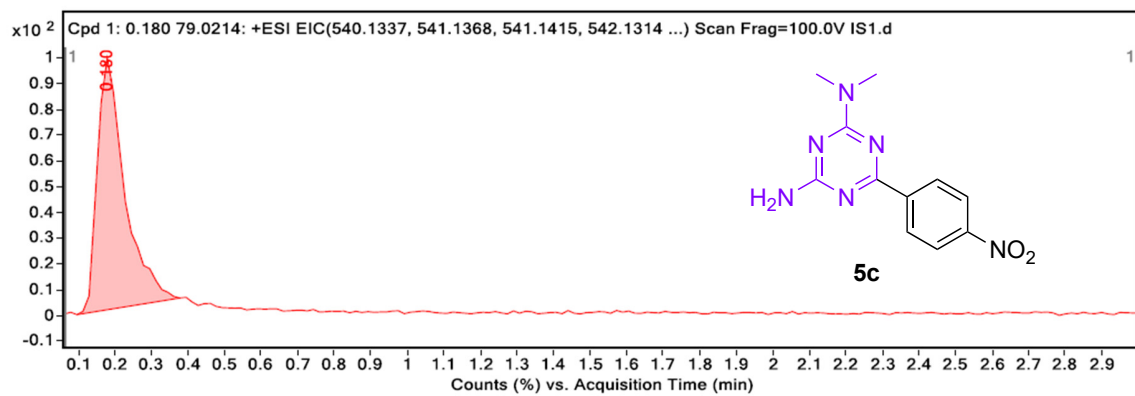
Compound Label	<i>m/z</i>	RT	Algorithm	Calcd. Mass
Cpd 1: 0.186 79.0214	233.1074	0.186	Find By Formula	233.1077

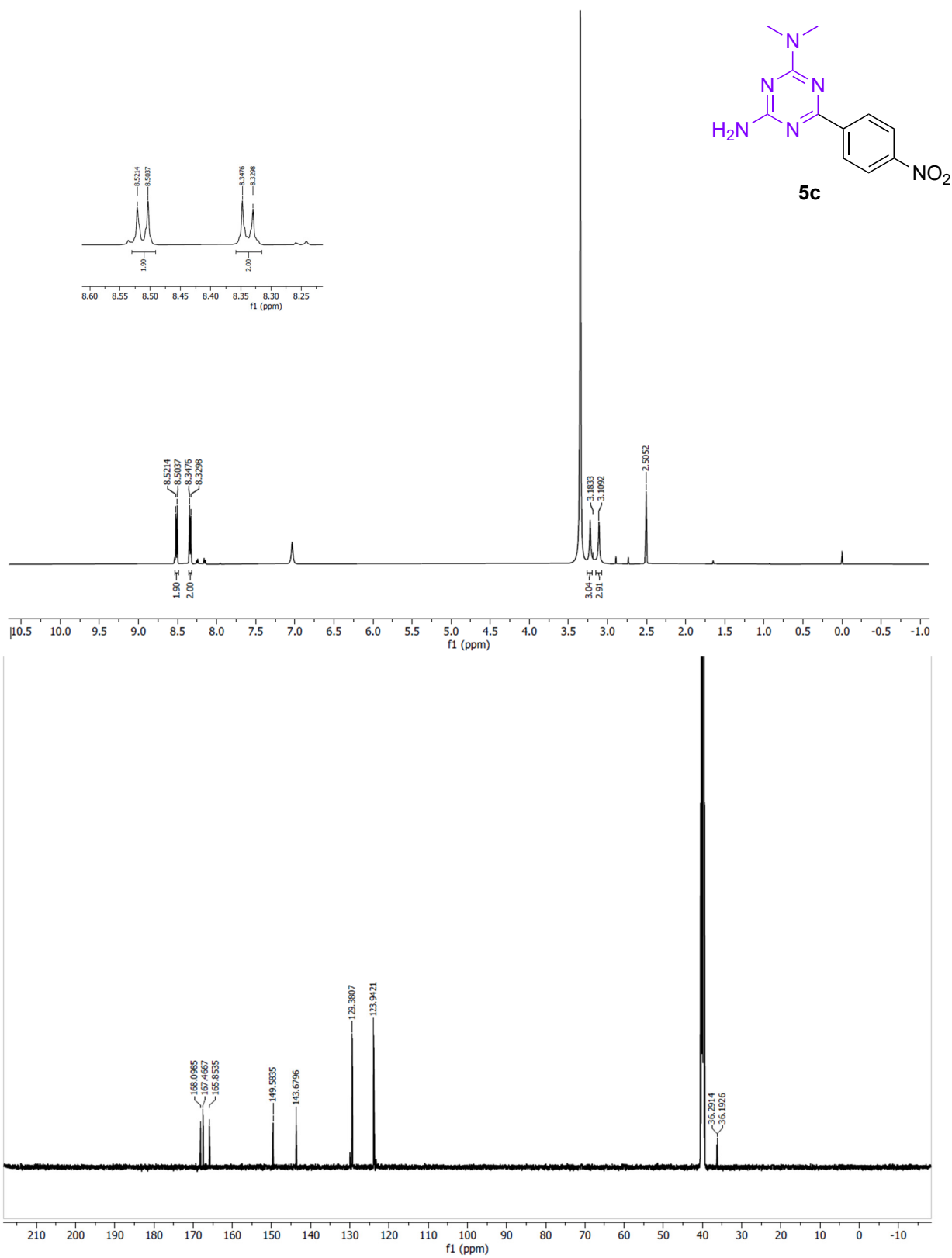


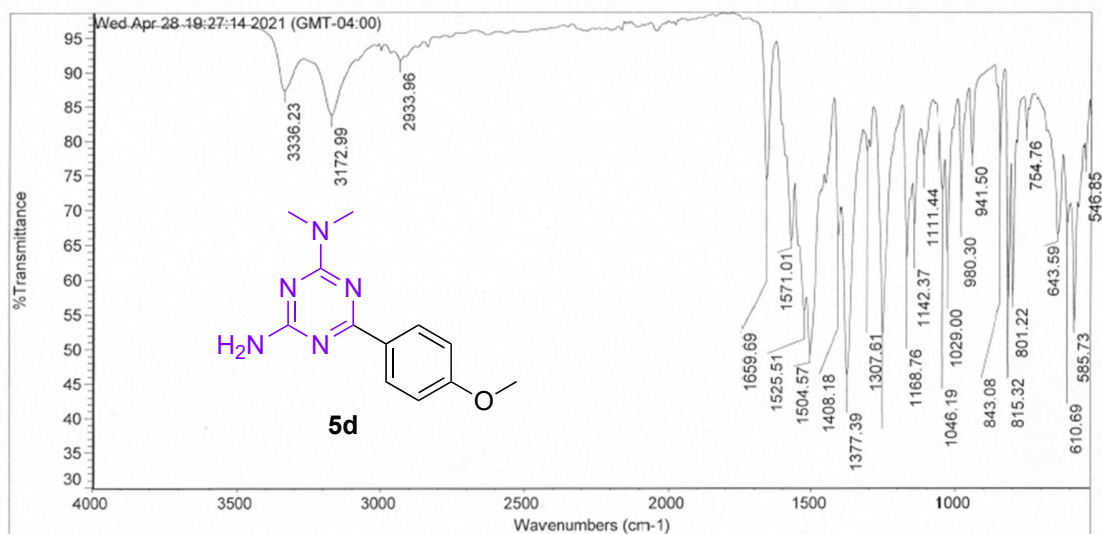




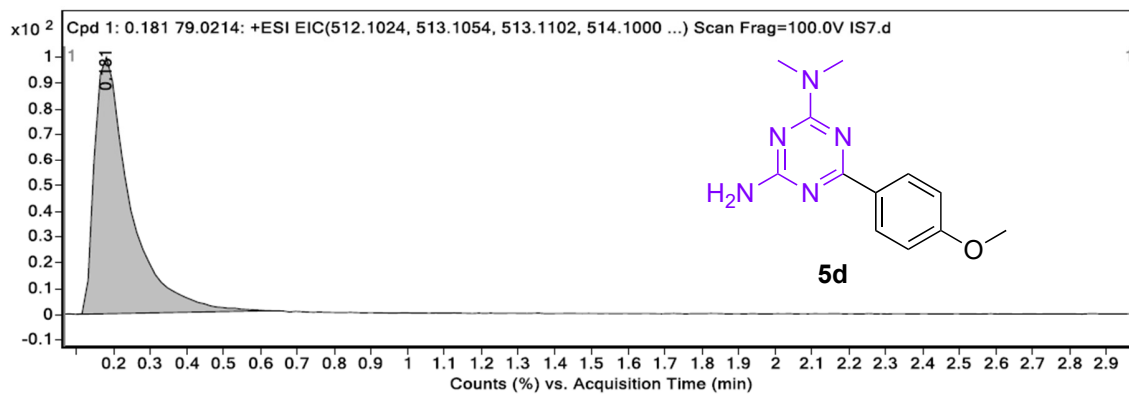
Compound Label	<i>m/z</i>	RT	Algorithm	Calcd. Mass
Cpd 1: 0.180 79.0214	260.1025	0.18	Find By Formula	260.1022

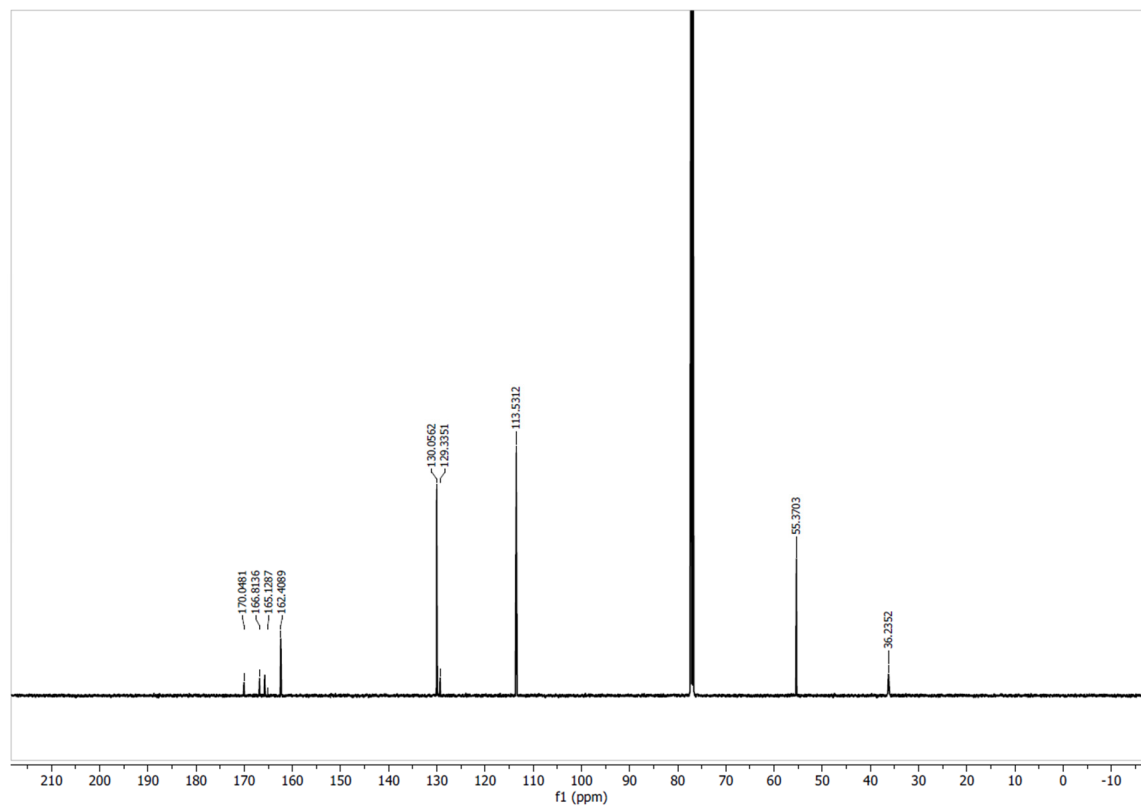
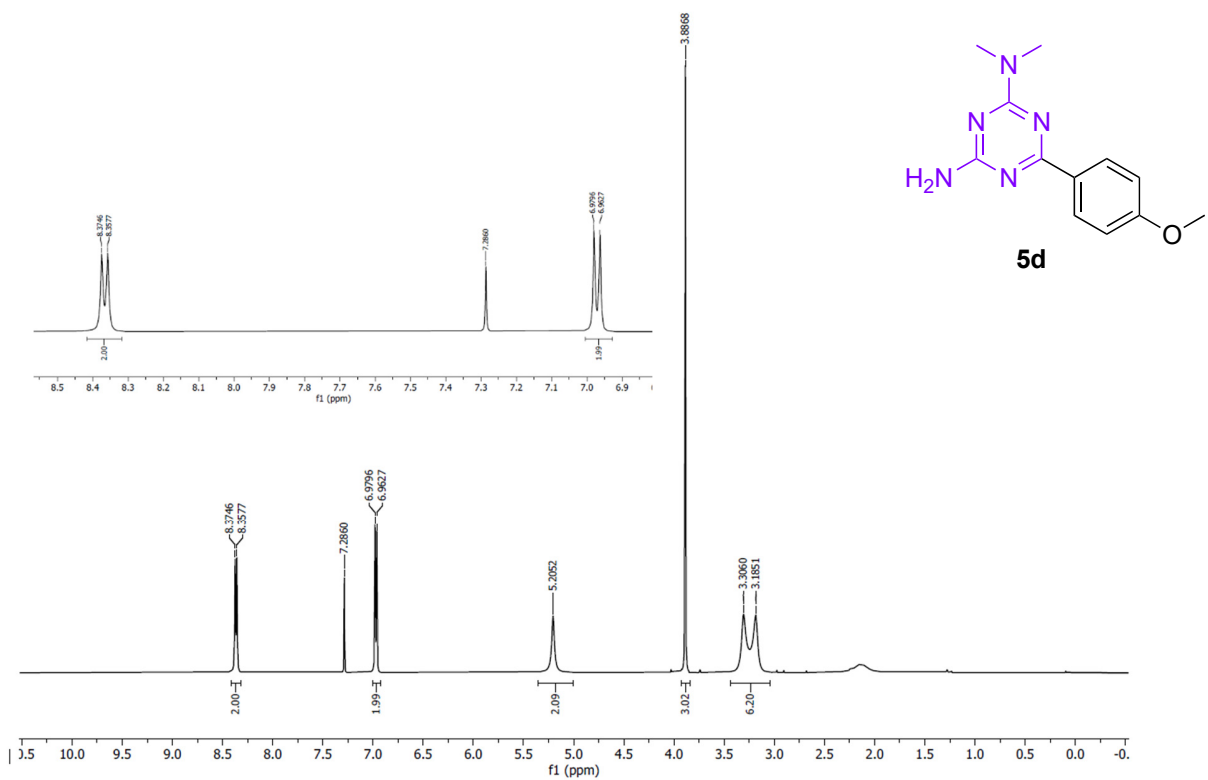


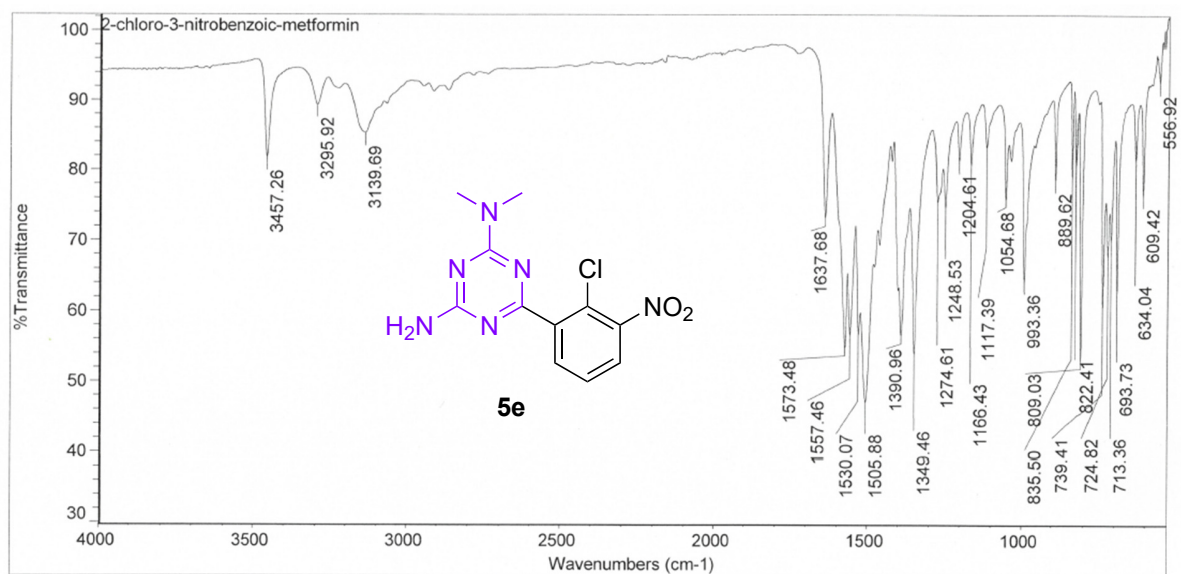




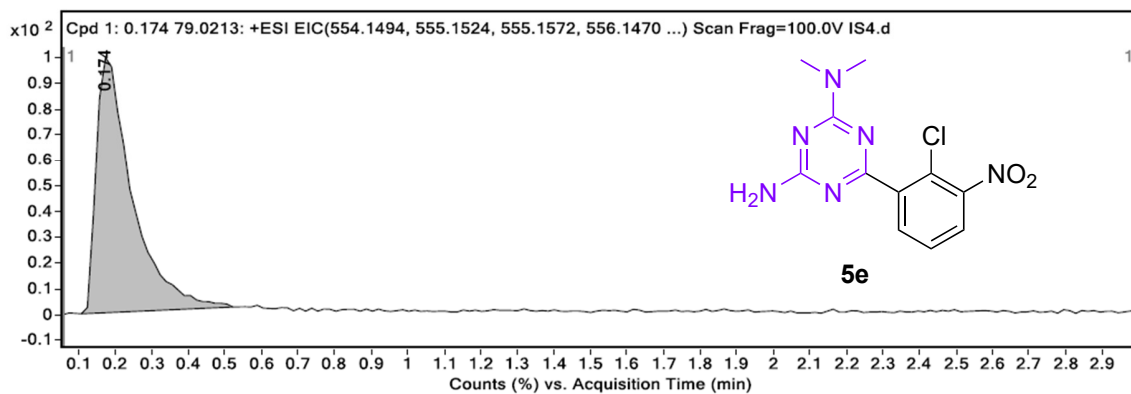
Compound Label	m/z	RT	Algorithm	Calcd. Mass
Cpd 1: 0.181 79.0214	245.1281	0.181	Find By Formula	245.1277

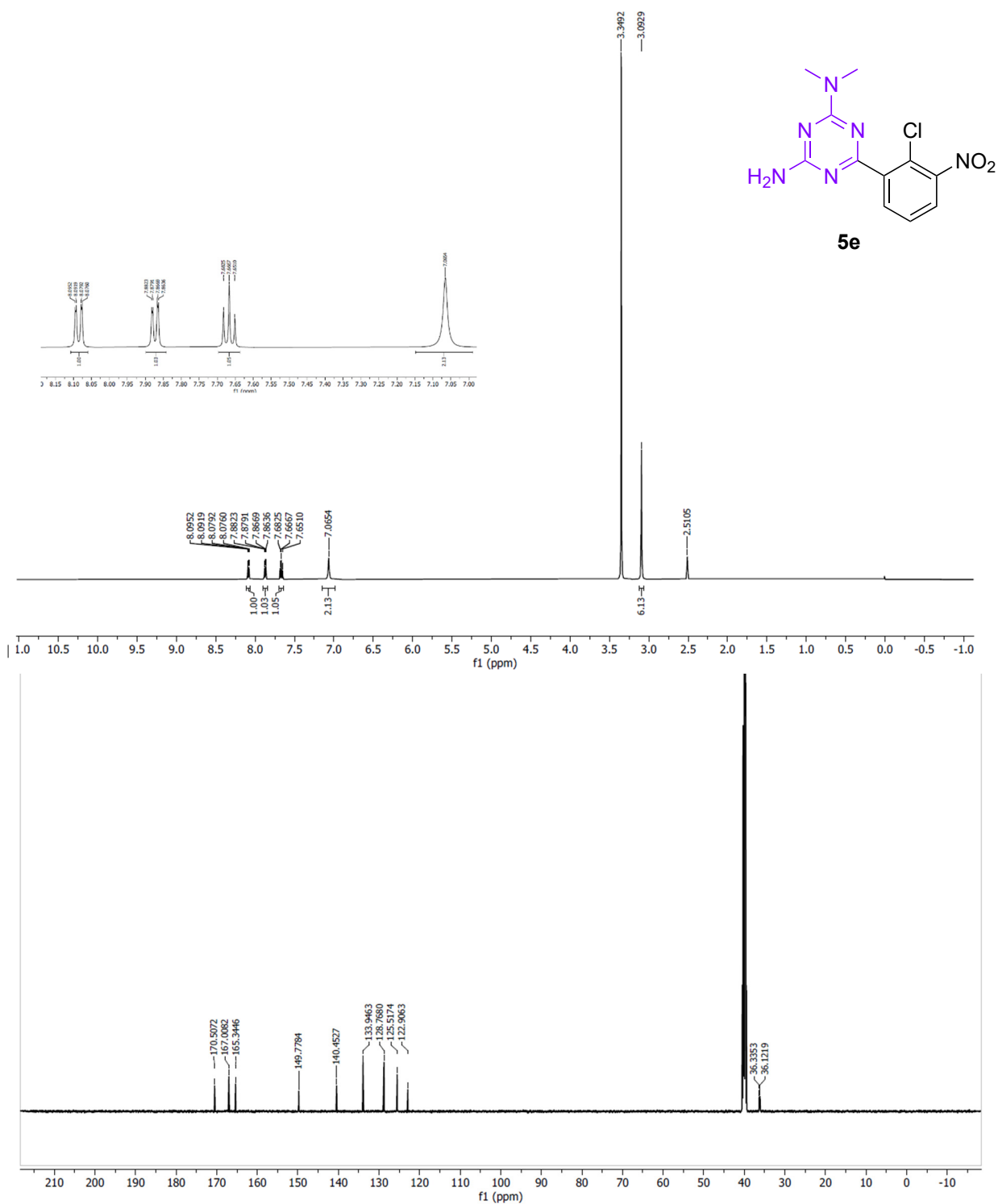


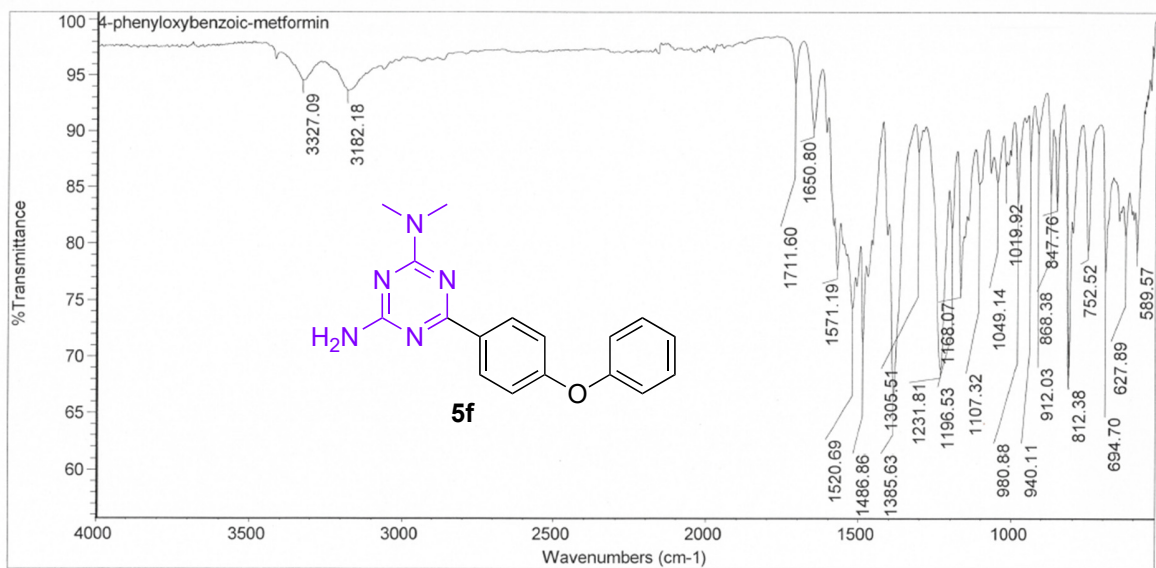




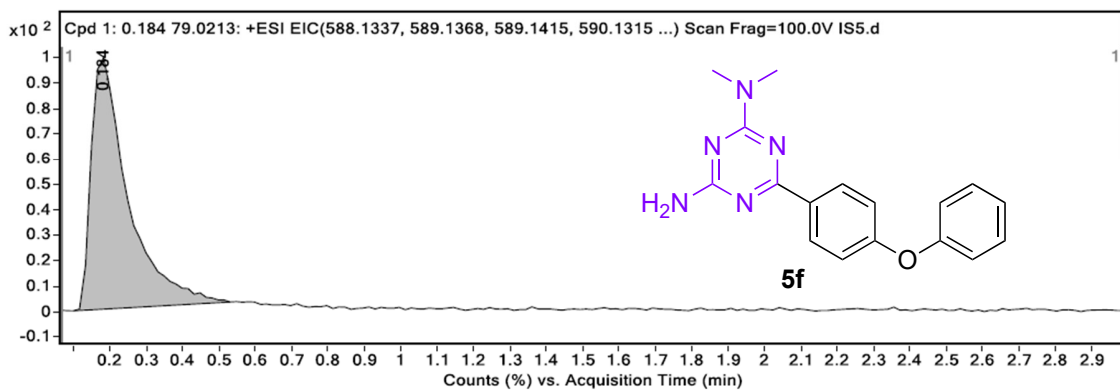
Compound Label	<i>m/z</i>	RT	Algorithm	Calcd. Mass
Cpd 1: 0.174 79.0213	294.0633	0.174	Find By Formula	294.0632

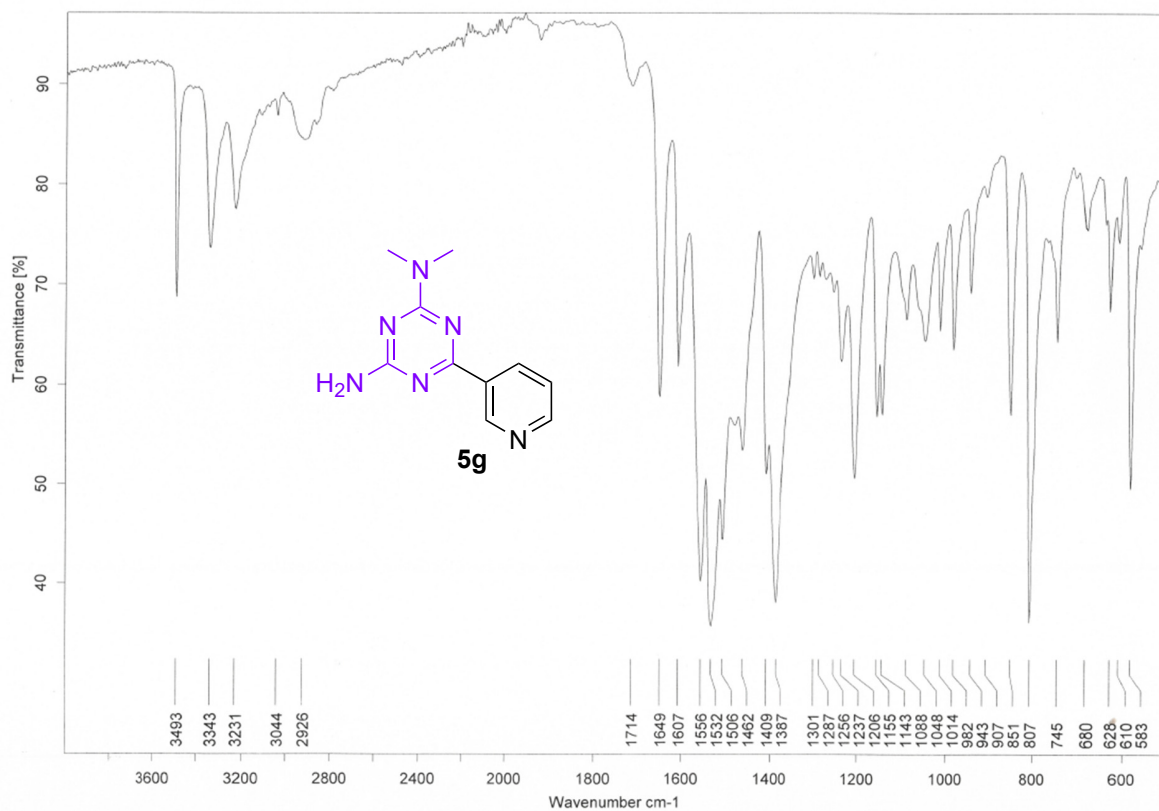




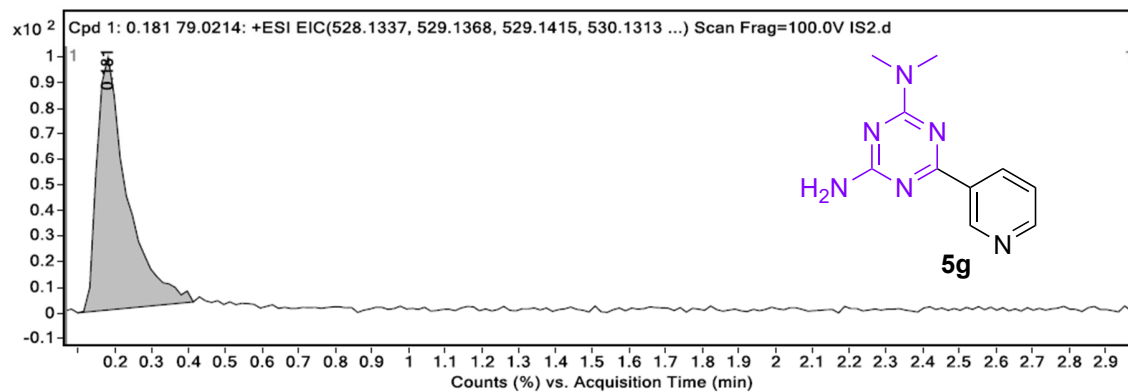


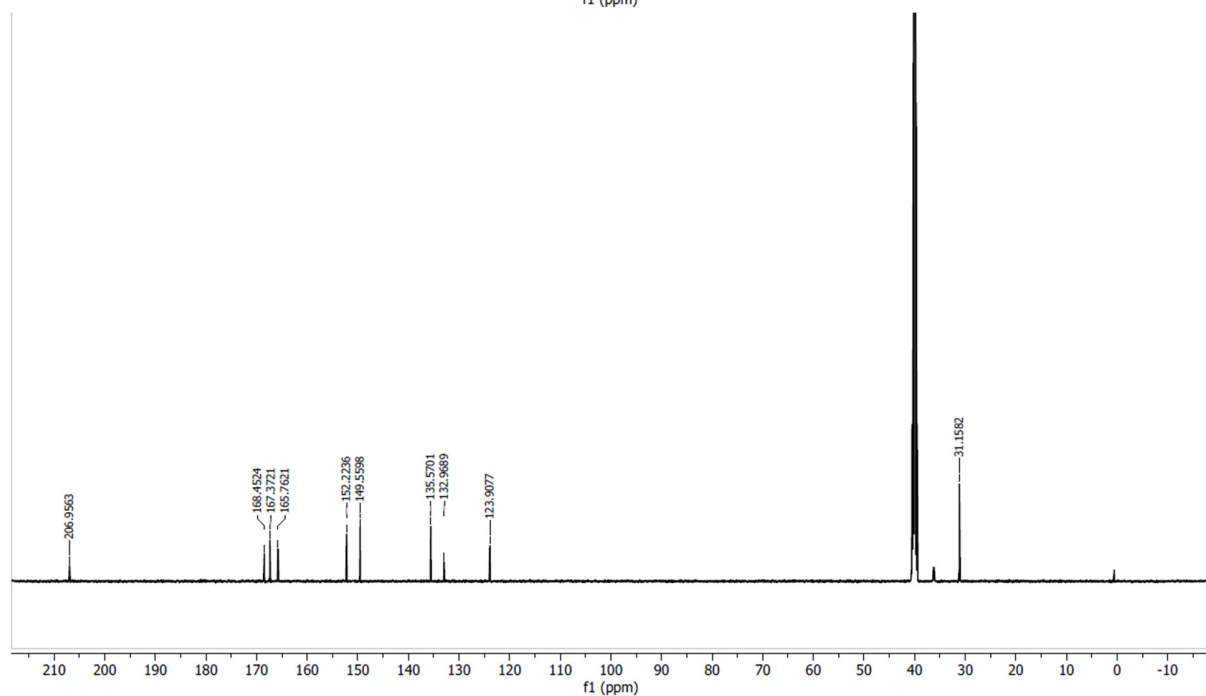
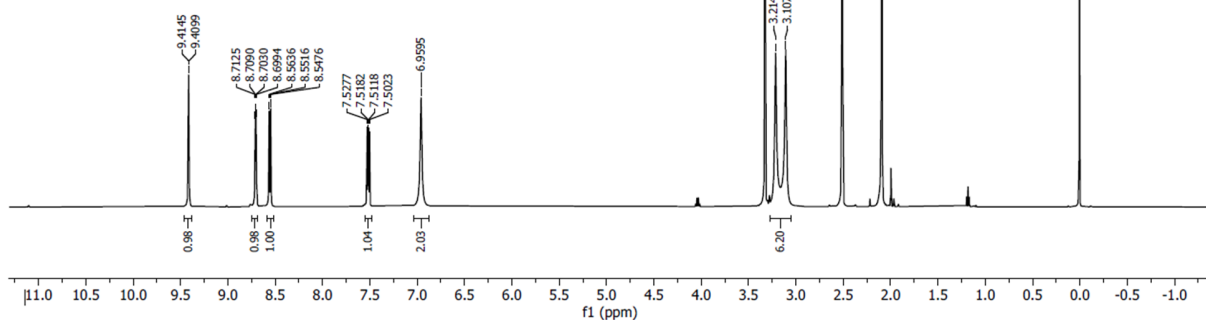
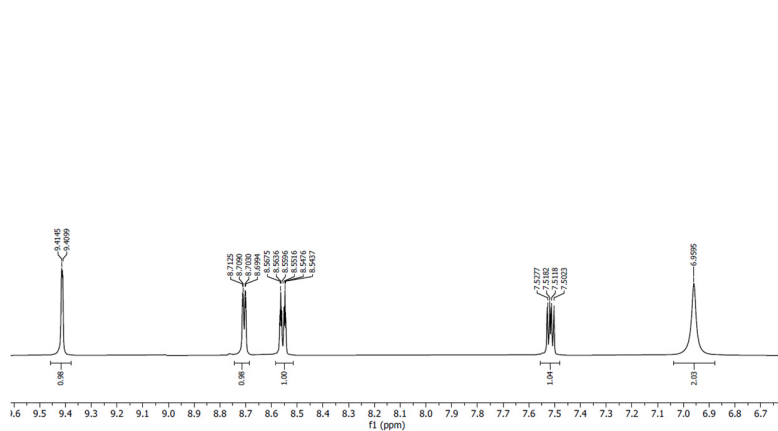
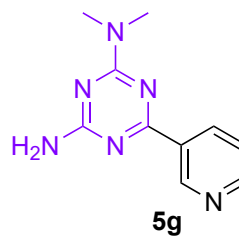
Compound Label	<i>m/z</i>	RT	Algorithm	Calcd. Mass
Cpd 1: 0.184 79.0213	307.1429	0.184	Find By Formula	307.1433

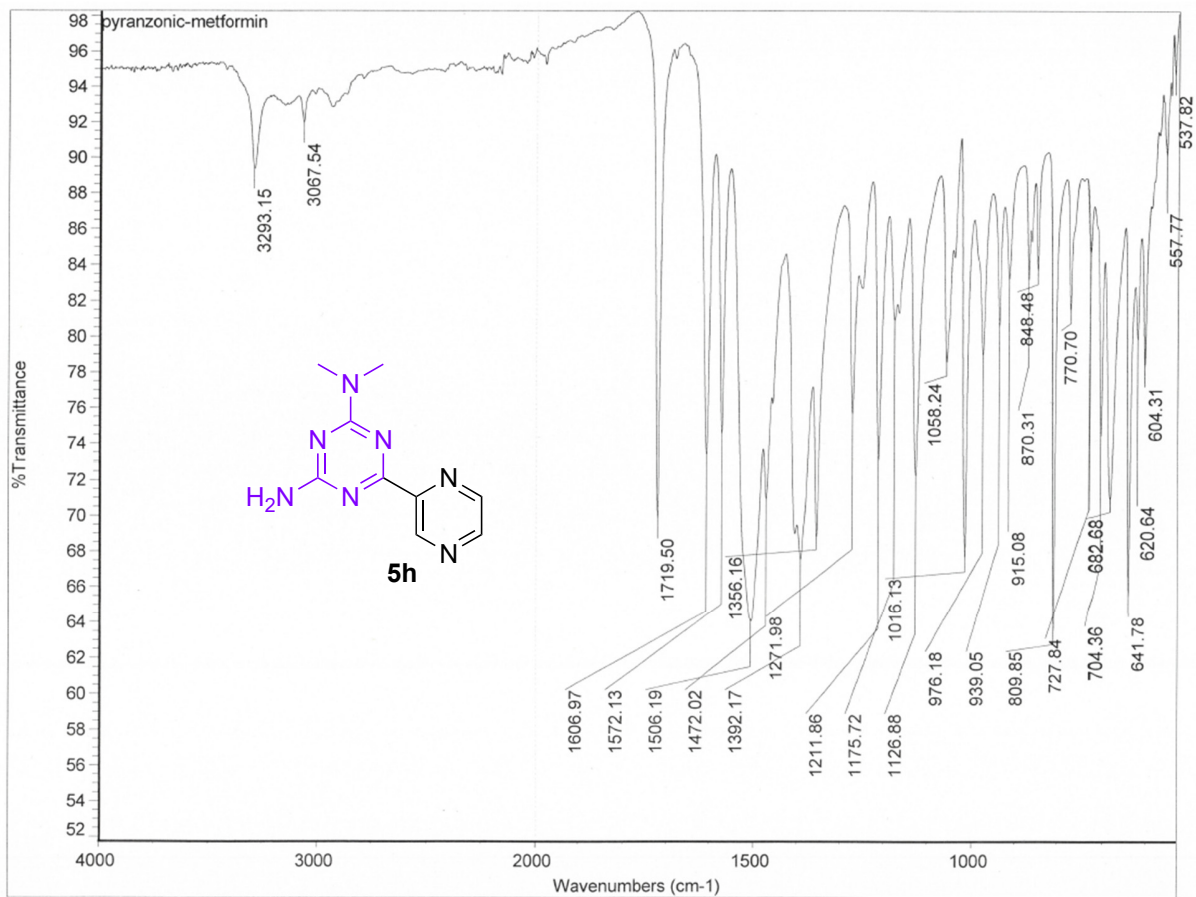




Compound Label	<i>m/z</i>	RT	Algorithm	Calcd. Mass
Cpd 1: 0.181 79.0214	216.1129	0.181	Find By Formula	216.1123







Compound Label	<i>m/z</i>	RT	Algorithm	Calcd. Mass
Cpd 1: 0.177 79.0214	217.1082	0.177	Find By Formula	217.1076

