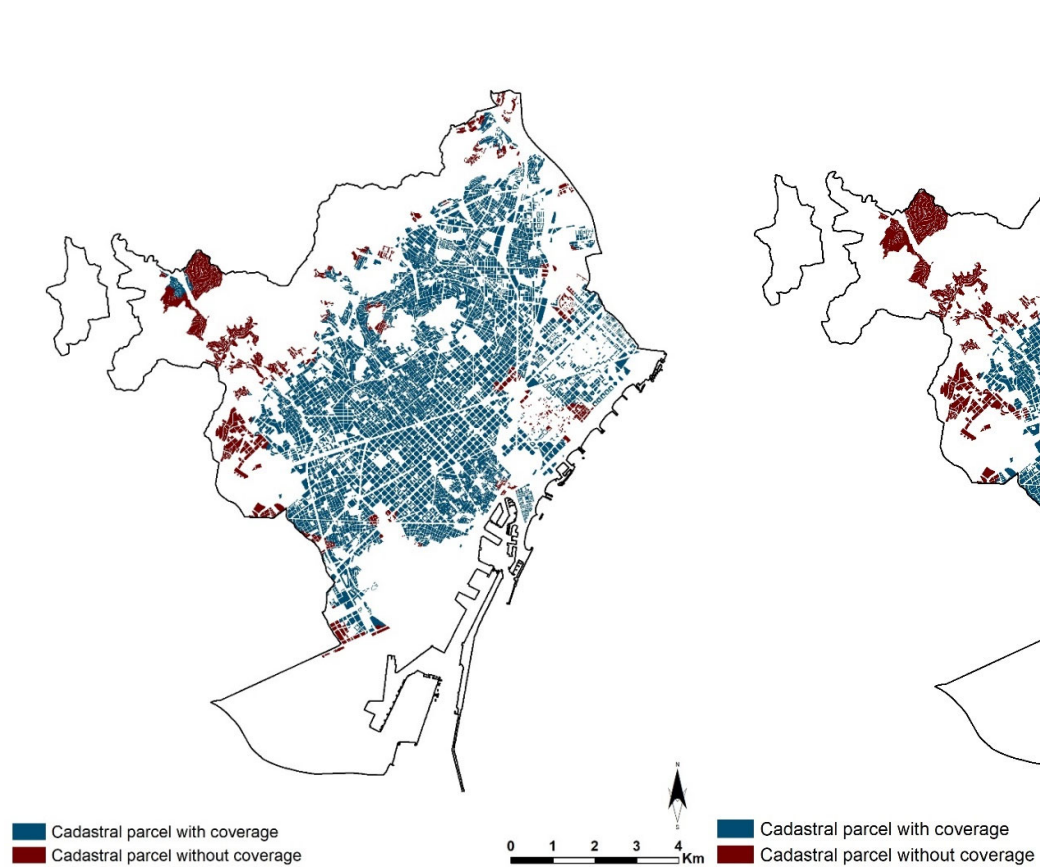


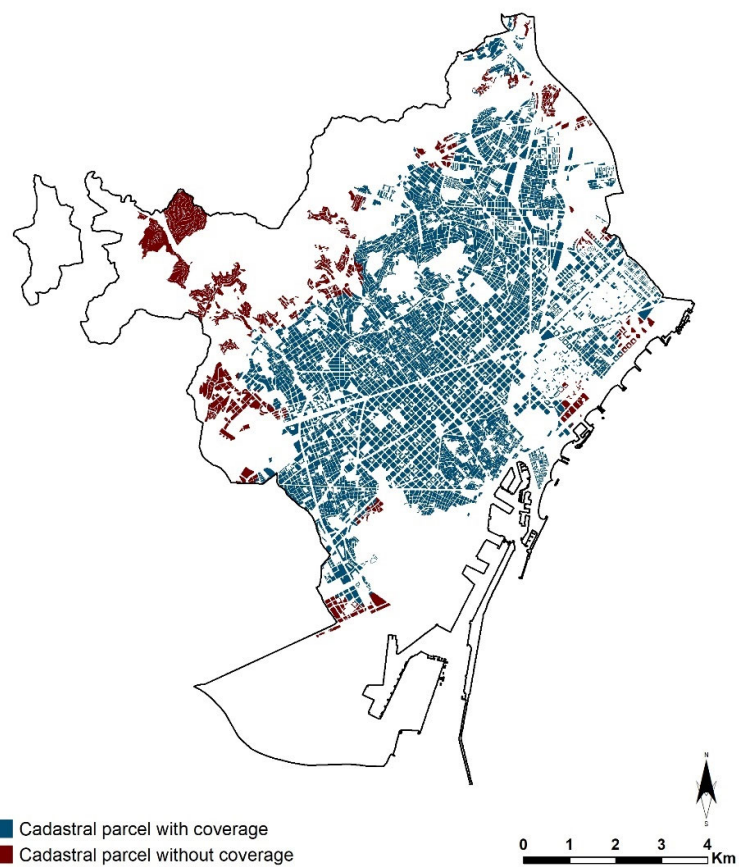
**Supplementary Material.** Areas of coverage of the various indicators of the study.

Figure S1. Areas of coverage of Health at 10''



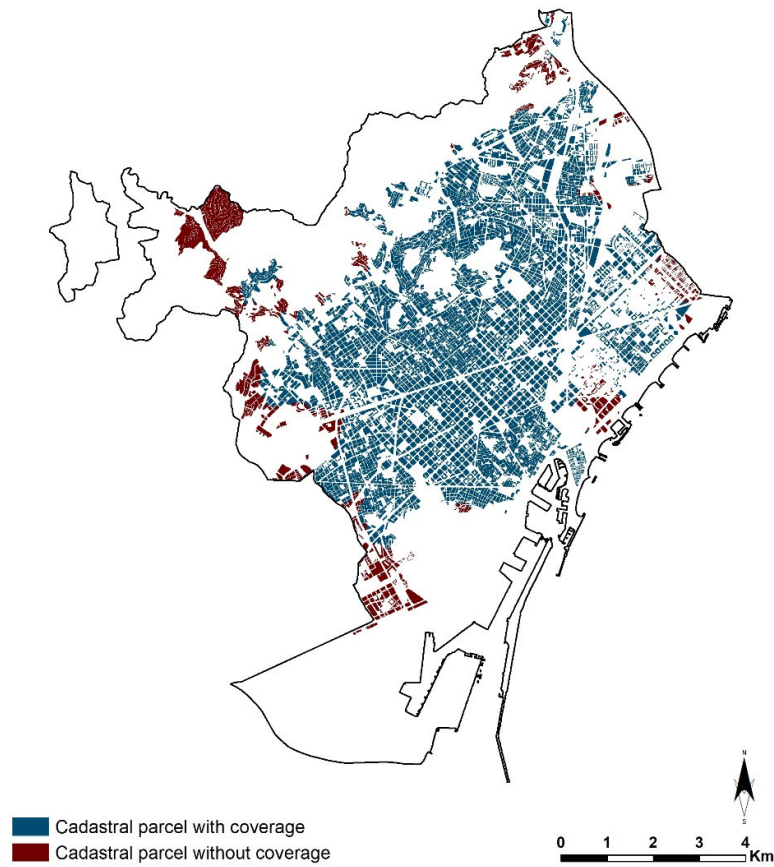
Source: Own production.

Figure S2. Areas of coverage of Social services at 15''



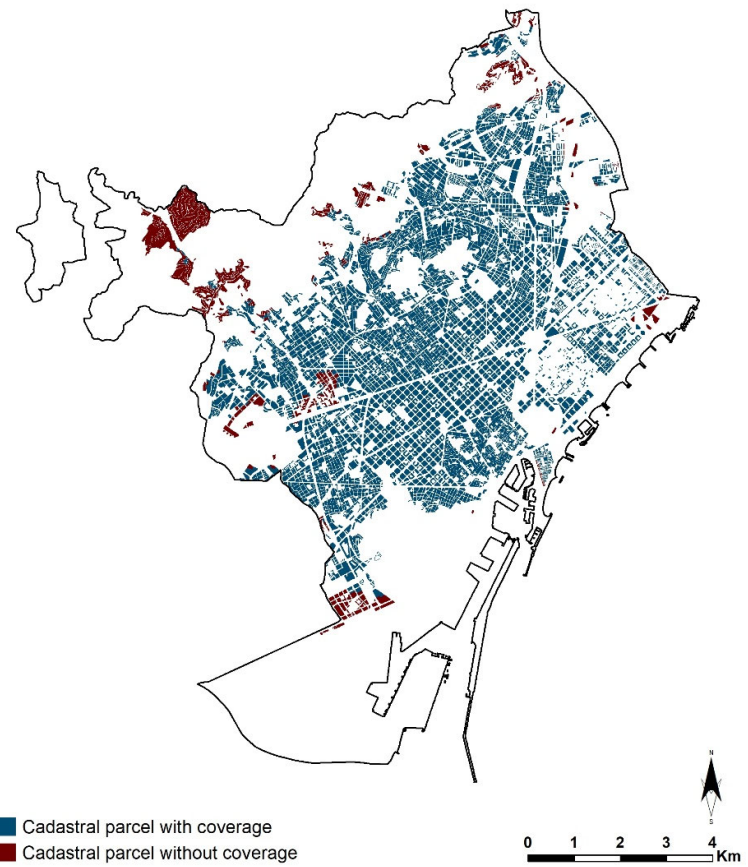
Source: Own production.

Figure S3. Areas of coverage of Day Centers at 10''



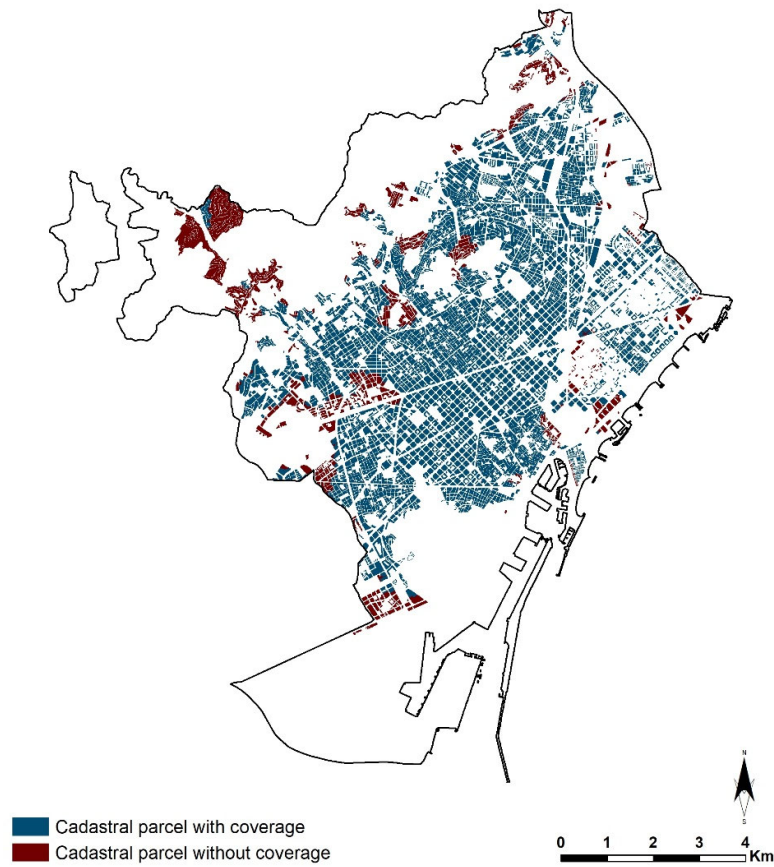
Source: Own production.

Figure S4. Areas of coverage of Preschool education at 5''



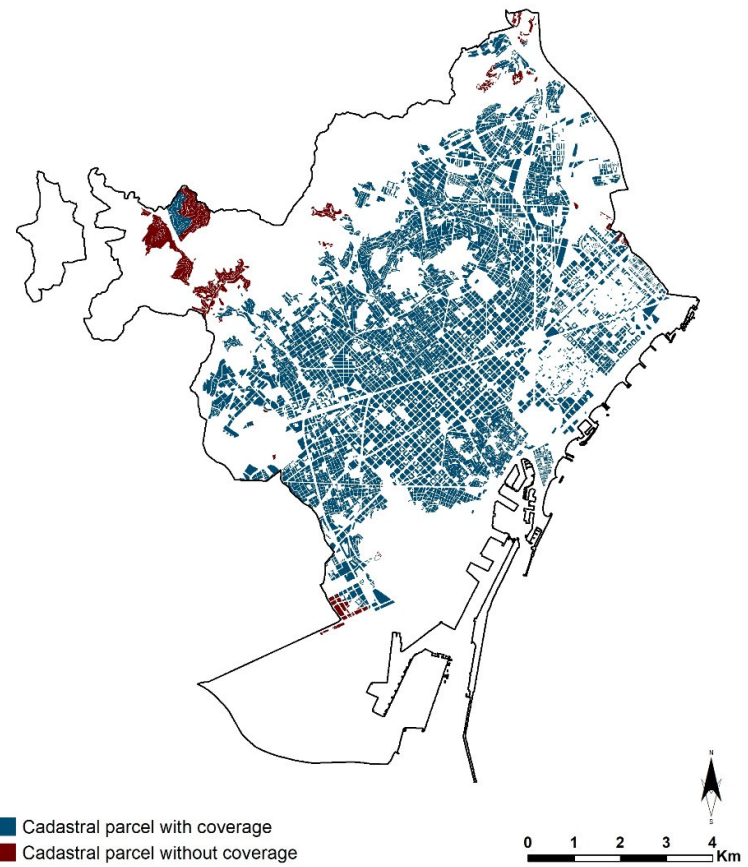
Source: Own production.

Figure S5. Areas of coverage of Primary education at 5"



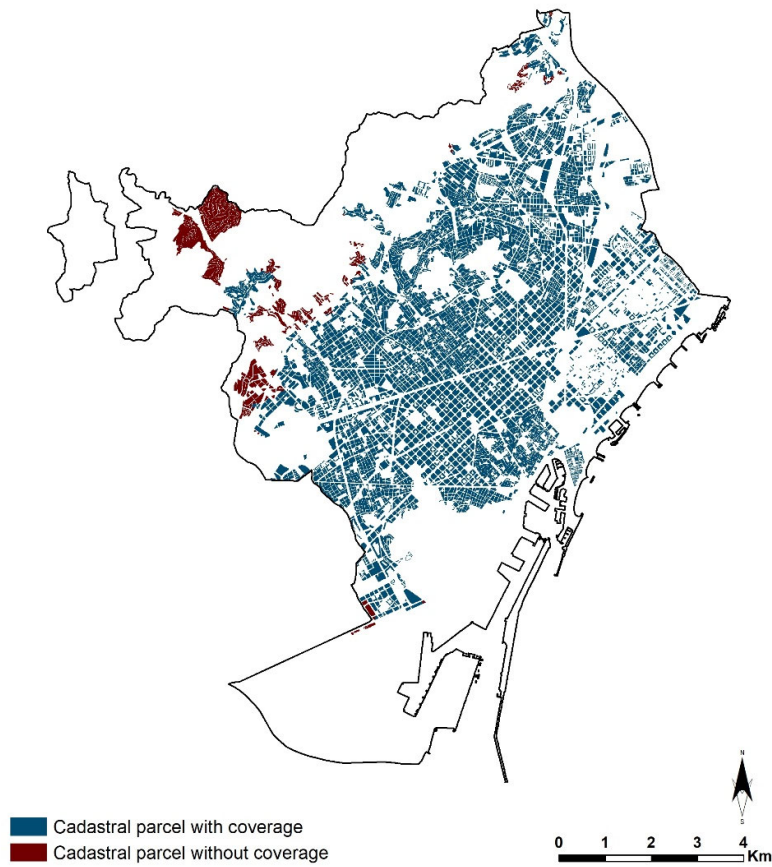
Source: Own production.

Figure S6. Areas of coverage of Secondary education at 10"



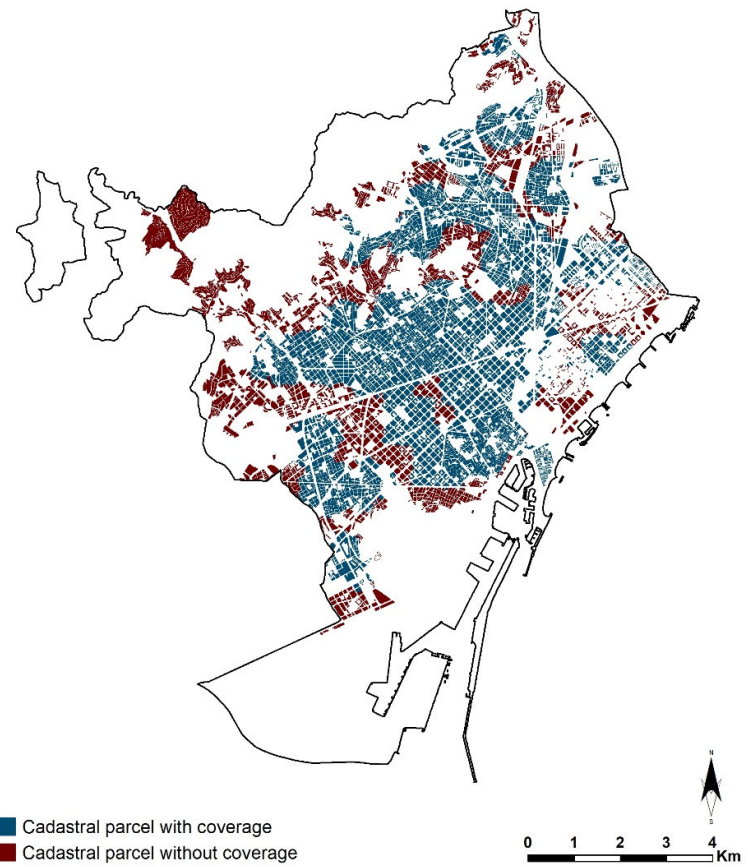
Source: Own production.

Figure S7. Areas of coverage of Supermarkets at 10''



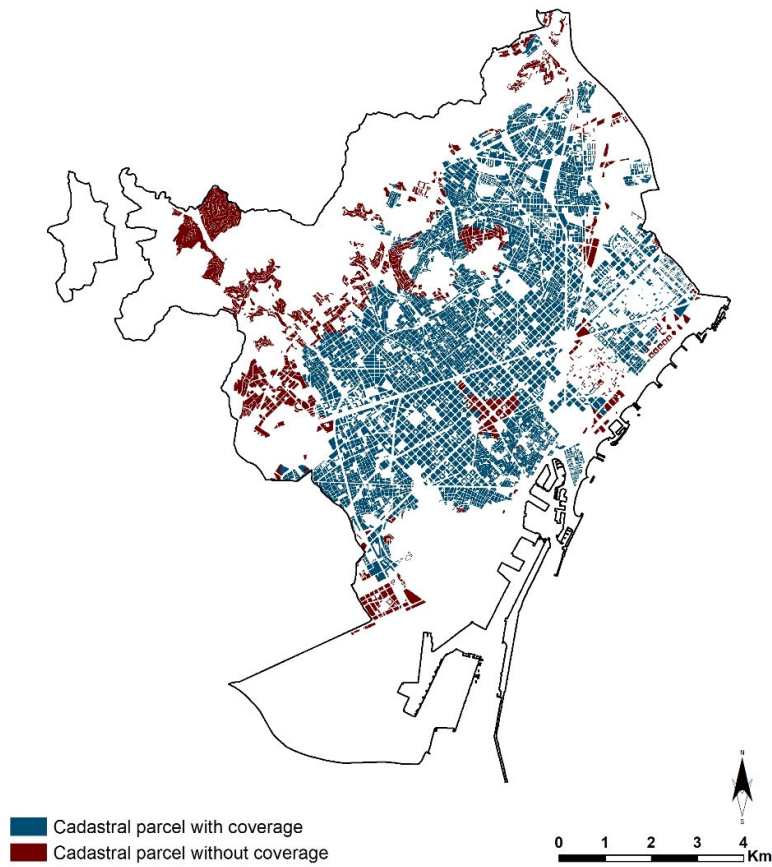
Source: Own production.

Figure S8. Areas of coverage of Markets at 10''



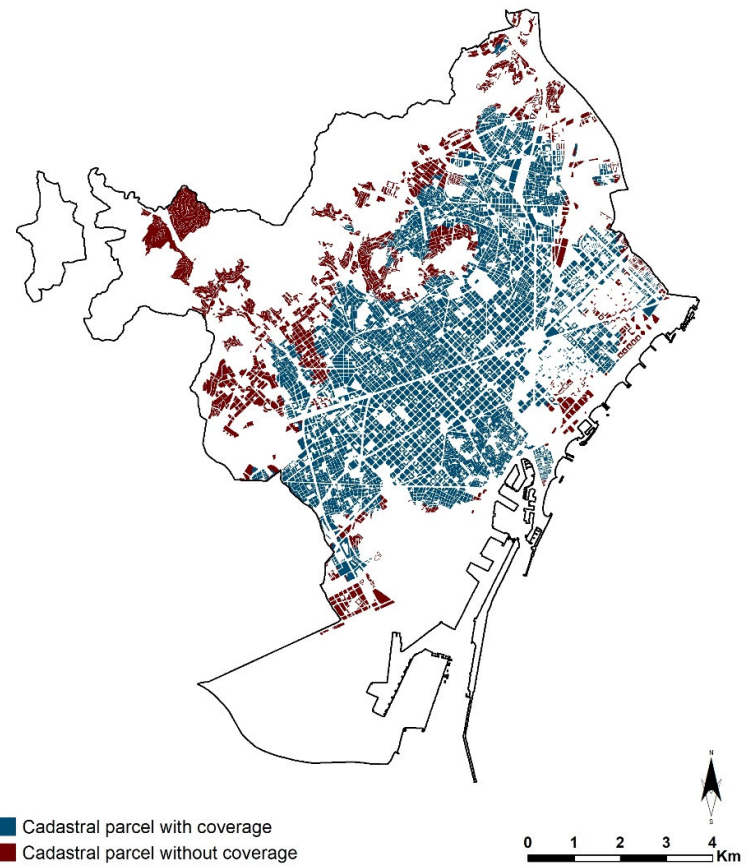
Source: Own production.

Figure S9. Areas of coverage of Fresh food (+50% of typologies) at 5''



Source: Own production.

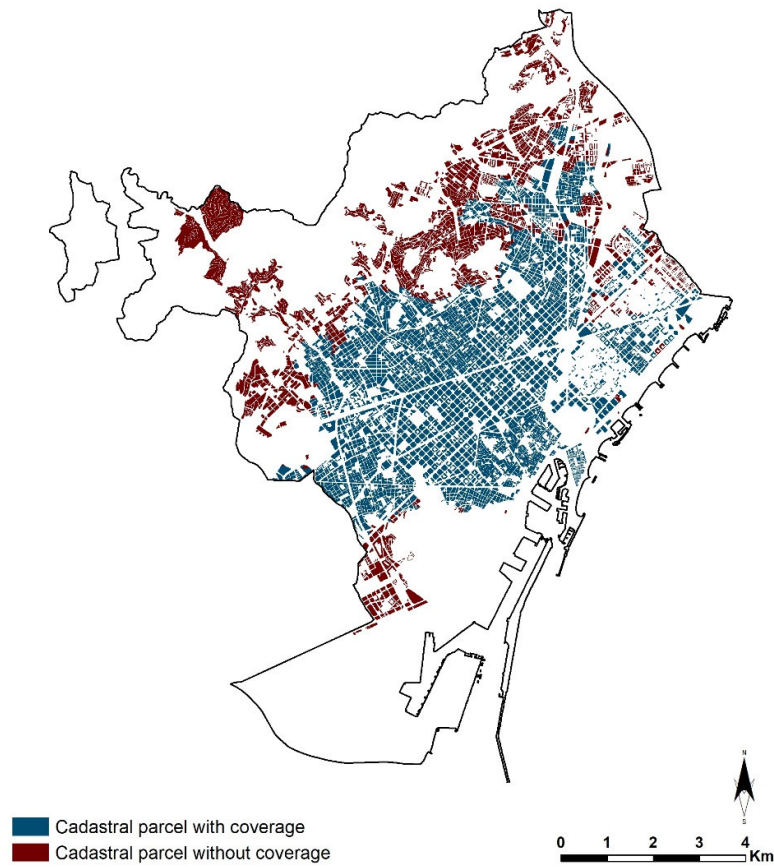
Figure S10. Areas of coverage of Daily non-food (+50% of typologies) at 5''



Source: Own production.

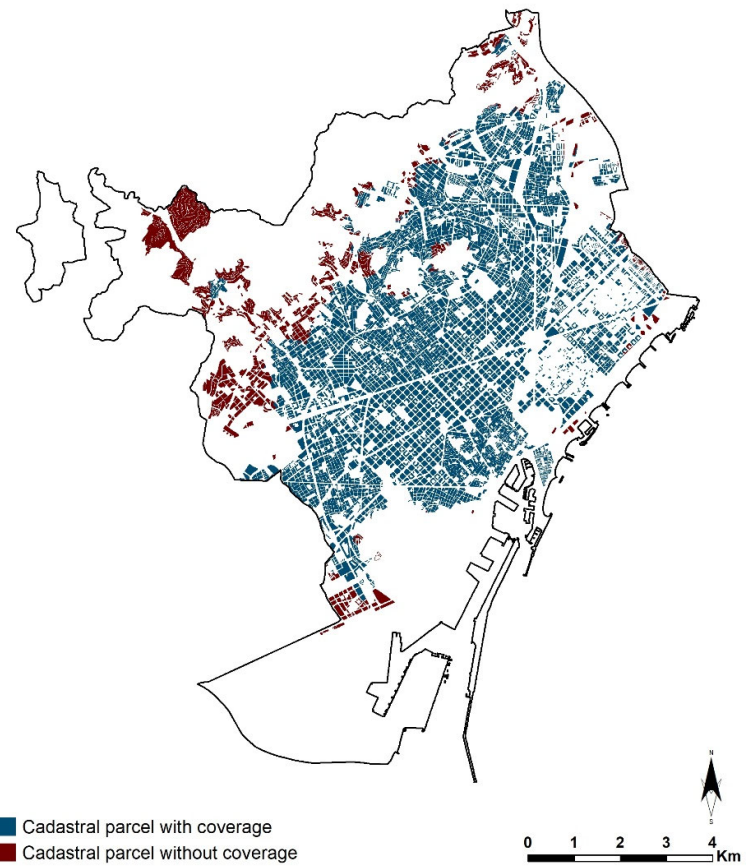


Figure S11. Areas of coverage of Catering (+50% of typologies) at 5''



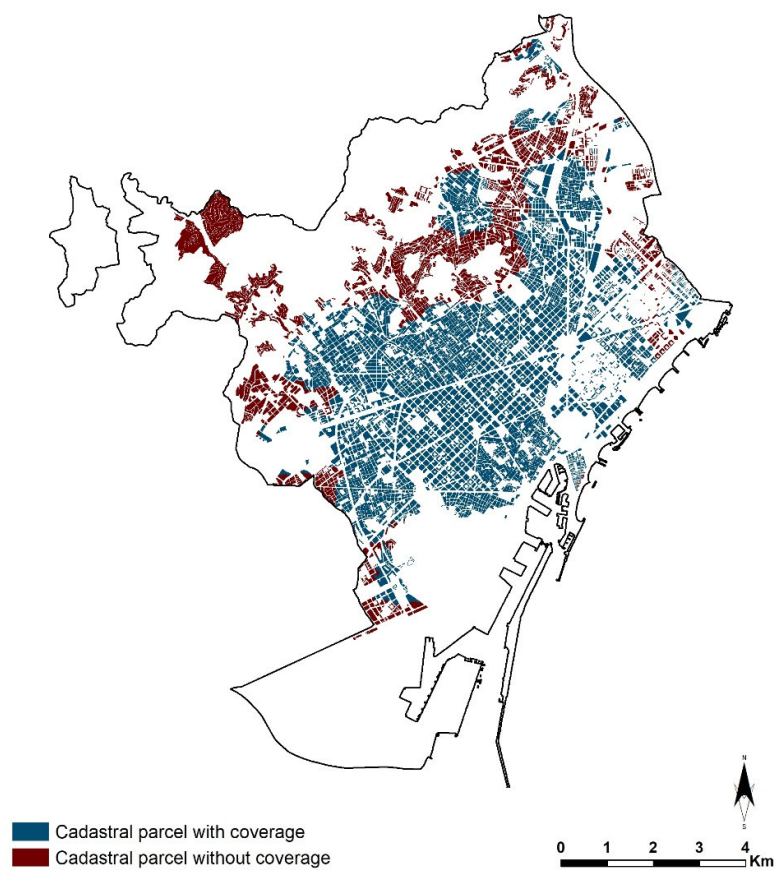
Source: Own production.

Figure S12. Areas of coverage Miscellaneous services (+50% of typologies) at 5''



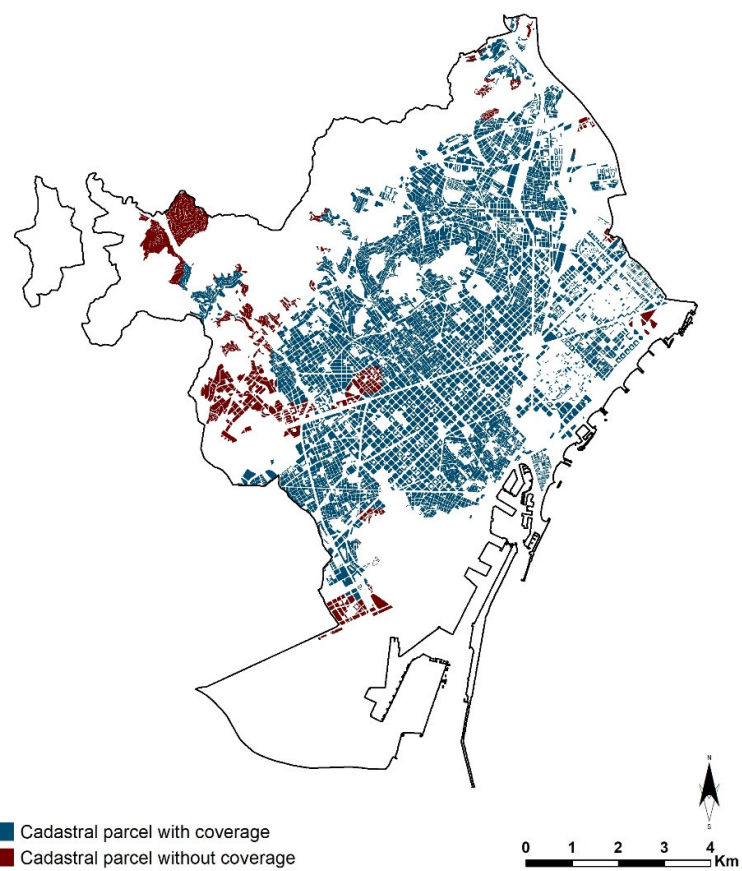
Source: Own production.

Figure S13. Areas of coverage of Shows at 10''



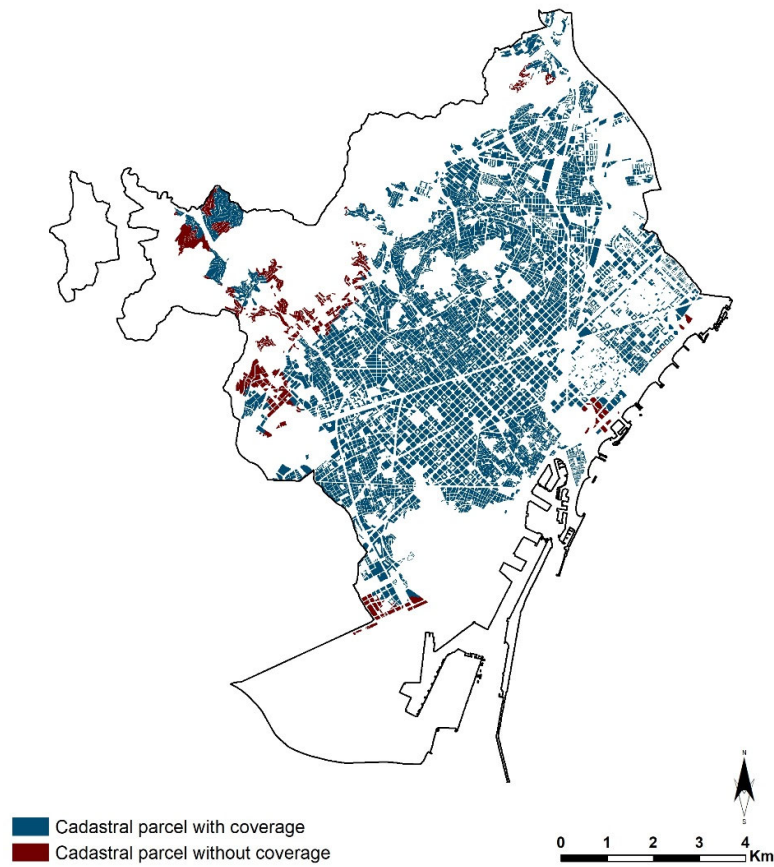
Source: Own production.

Figure S14. Areas of coverage of Libraries at 10''



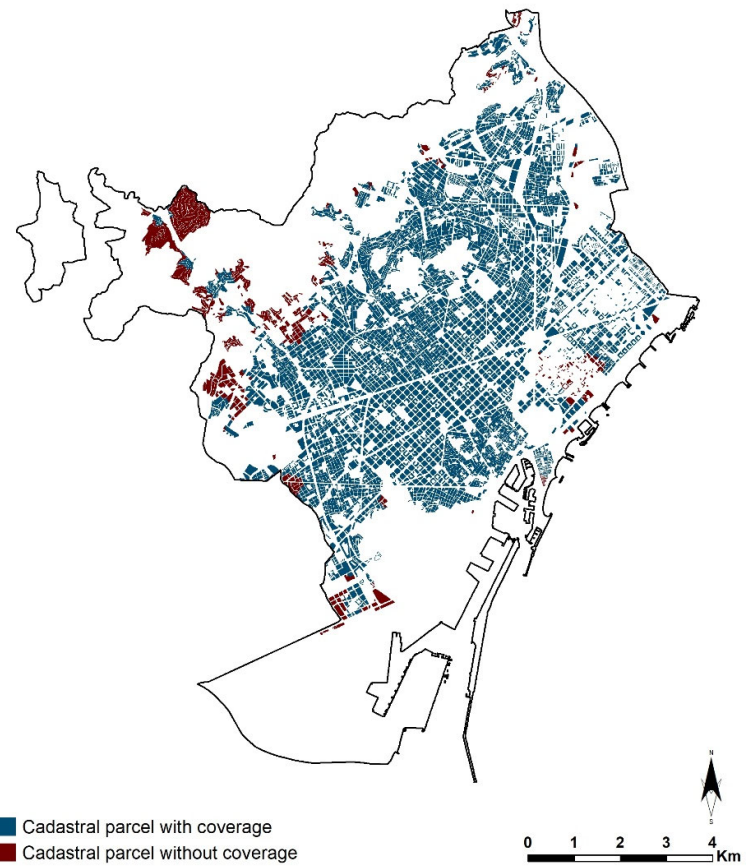
Source: Own production.

Figure S15. Areas of coverage of Civic centers at 10''



Source: Own production.

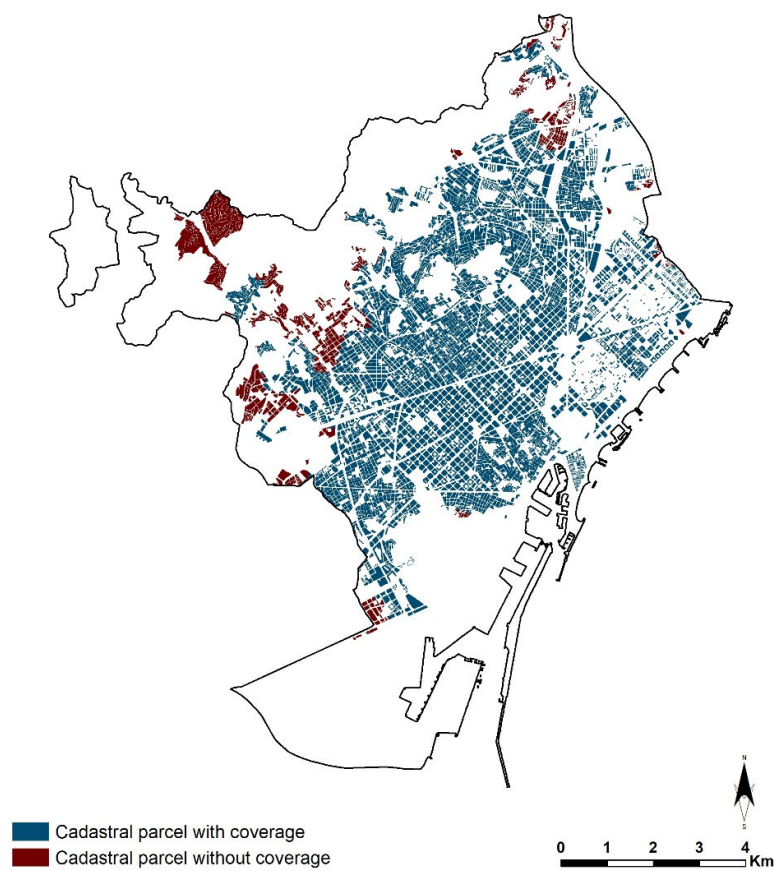
Figure S16. Areas of coverage of Children playgrounds at 5''



Source: Own production.

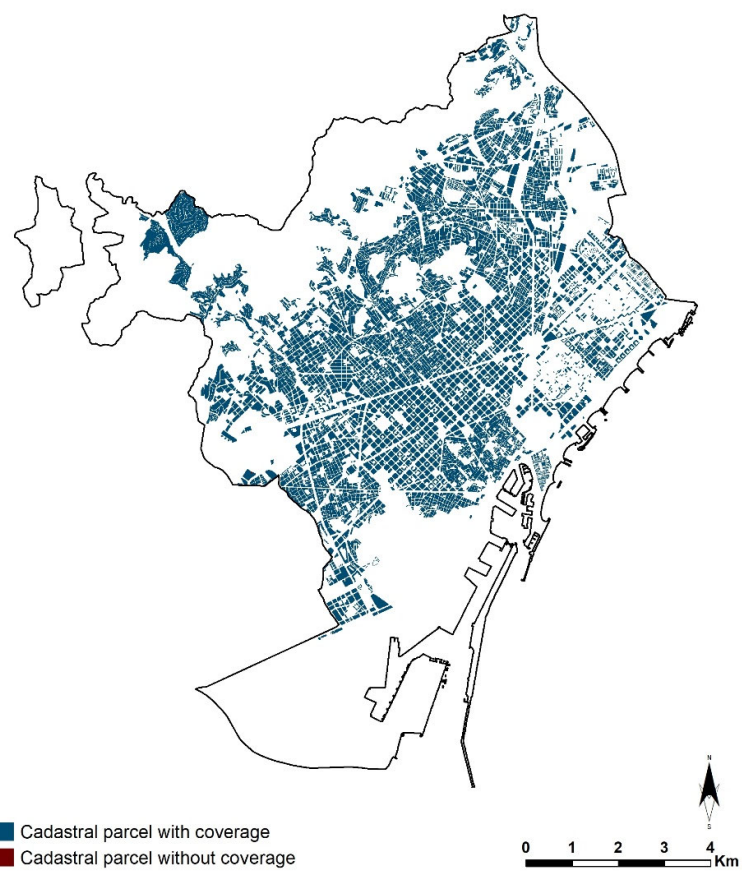


Figure S17. Areas of coverage of Sports facilities at 10''



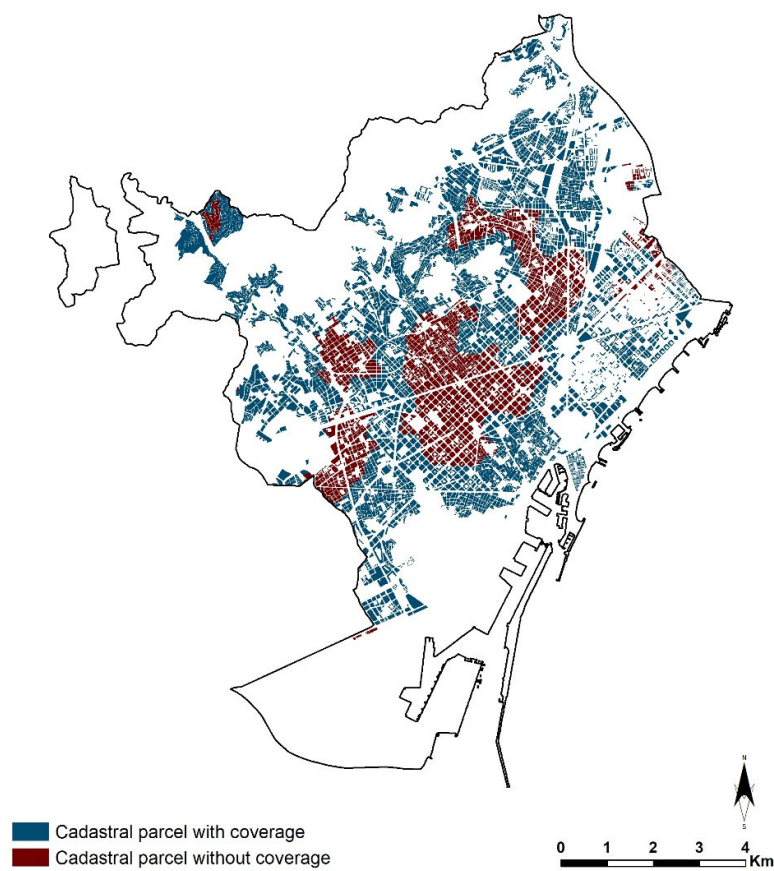
Source: Own production.

Figure S18. Areas of coverage of Squares and parks >1,000 m<sup>2</sup> at 5''



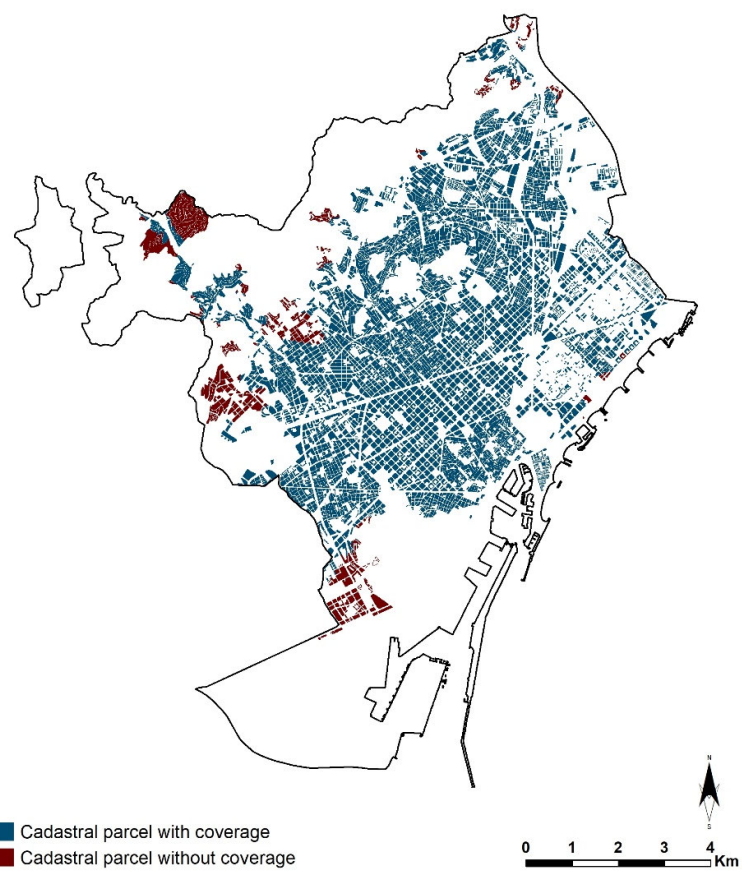
Source: Own production.

Figure S19. Areas of coverage of Squares and parks >10,000 m<sup>2</sup> at 5''



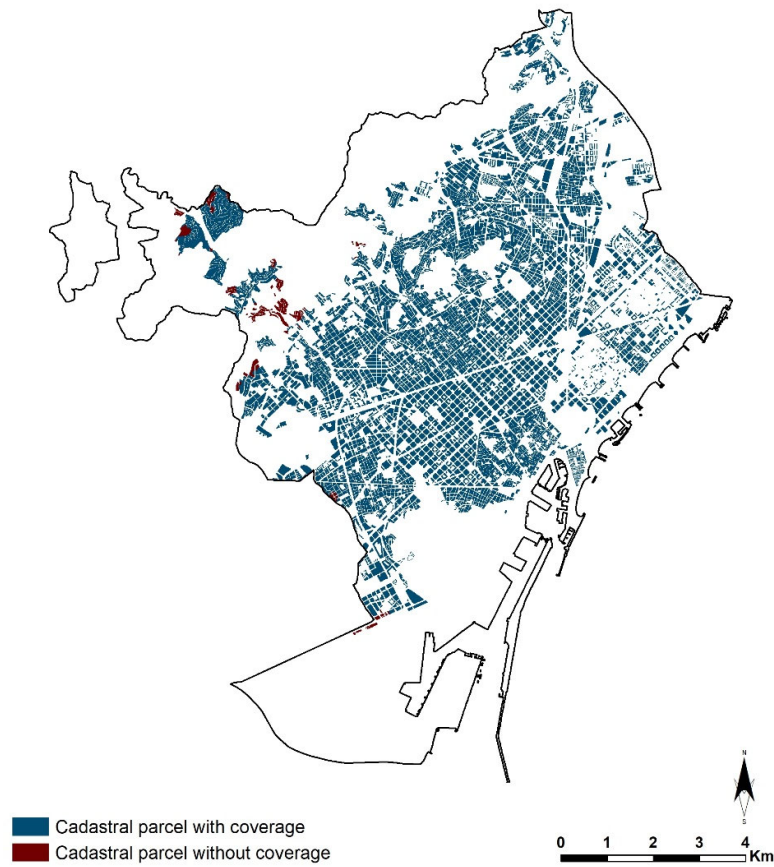
Source: Own production.

Figure S20. Areas of coverage of Collective rapid transport at 10''



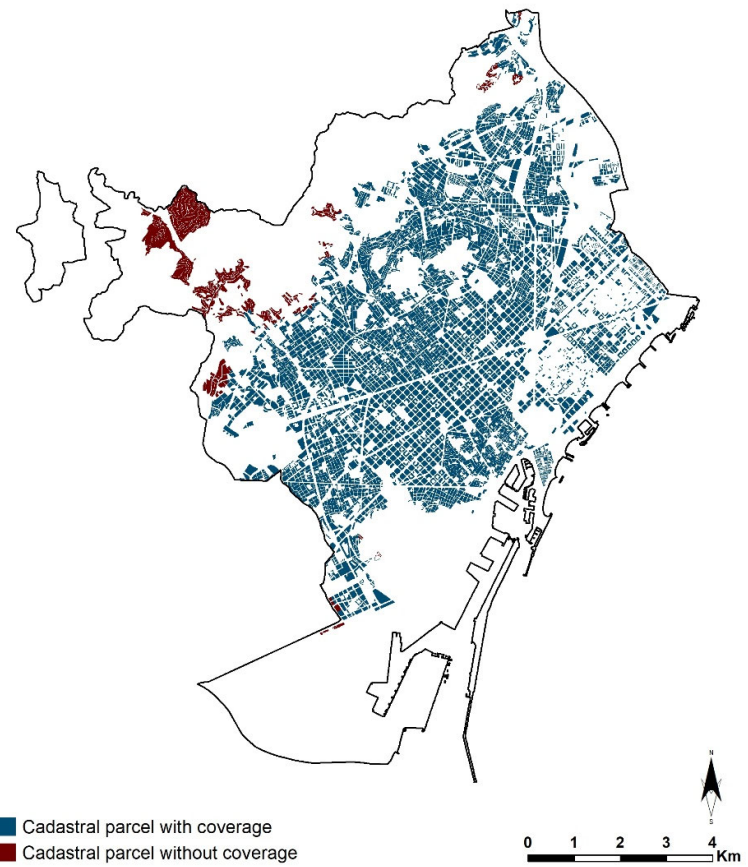
Source: Own production.

Figure S21. Areas of coverage of Day bus at 5''



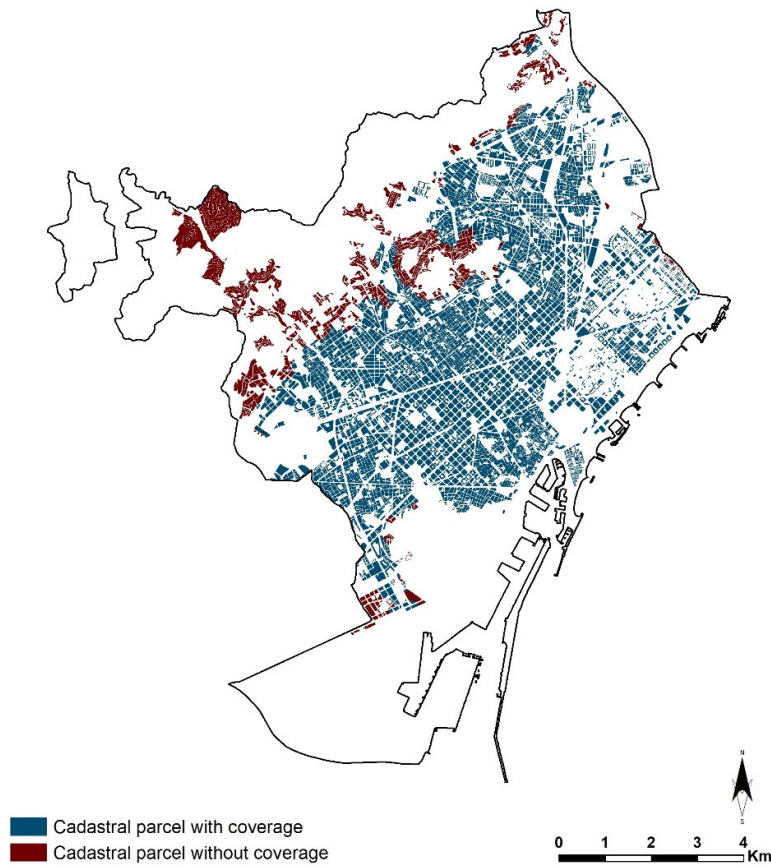
Source: Own production.

Figure S22. Areas of coverage of Night bus at 10''



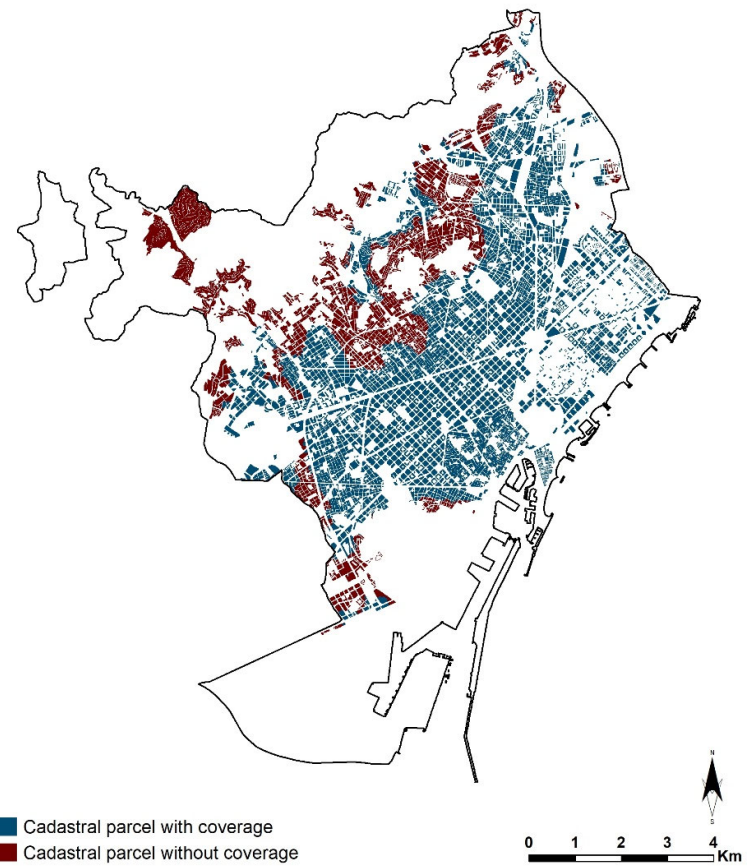
Source: Own production.

Figure S23. Areas of coverage Shared bike stations at 5''



Source: Own production.

Figure S24. Areas of coverage of Bike lanes at 5''



Source: Own production.