

Supplementary materials

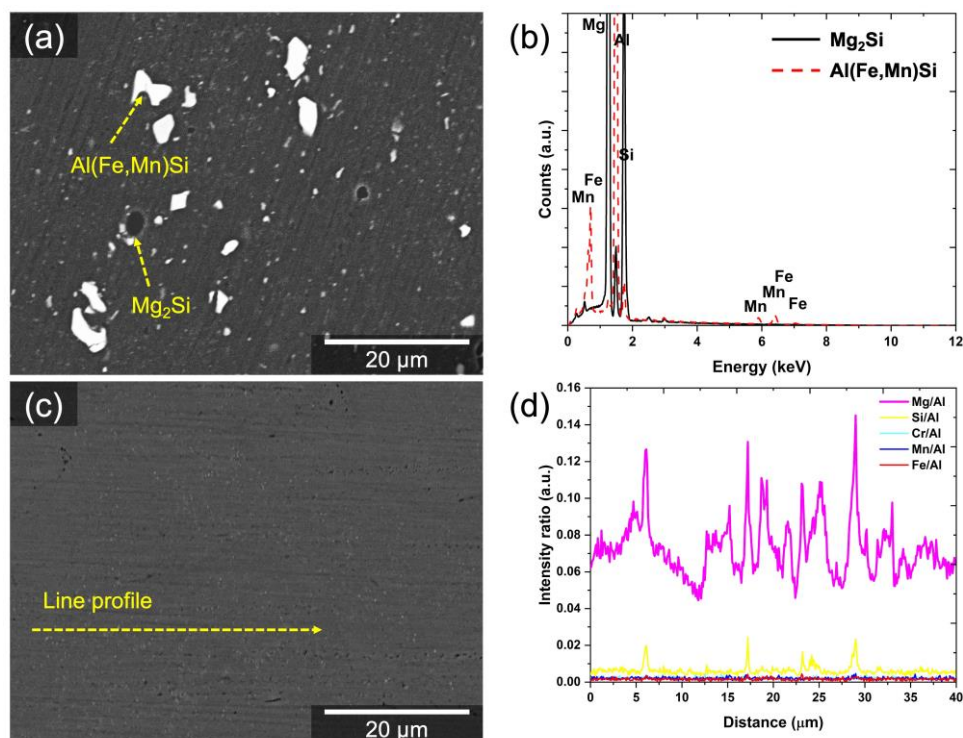


Figure S1. BSE micrographs and corresponding point and line profile analyses: (a,b) wrought AA5083-H116 and (c,d) cold sprayed AA5083.

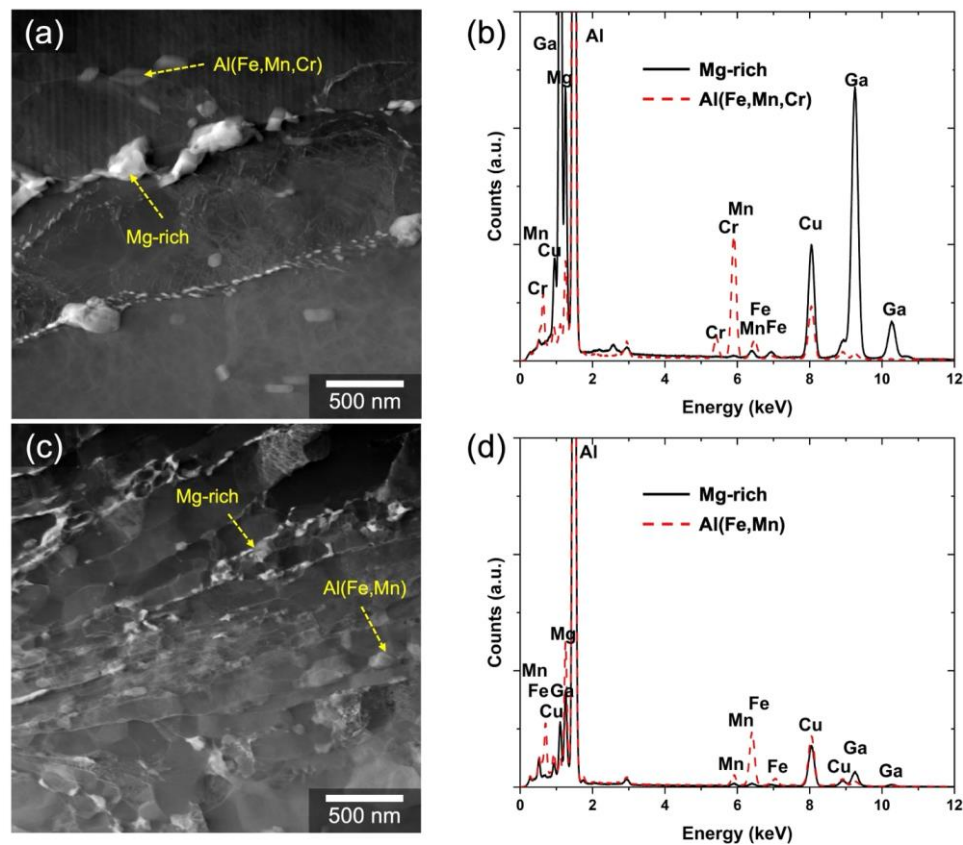


Figure S2. STEM micrographs and corresponding point analyses: (a,b) wrought AA5083-H116 and (c,d) cold sprayed AA5083. Note that Cu and Ga peaks come from Cu TEM grid and embedded Ga from the sample preparation step, respectively.