

Article

A Comparison between the Face of the Veil of Manoppello and the Face of the Shroud of Turin

Liberato De Caro ^{1,*}, Emilio Matricciani ² and Giulio Fanti ³

¹ Istituto di Cristallografia, Consiglio Nazionale delle Ricerche (IC-CNR), via Amendola 122/O, 70126 Bari, Italy

² Dipartimento di Elettronica, Informazione e Bioingegneria, Politecnico di Milano, Piazza L. da Vinci, 32, 20133 Milan, Italy; emilio.matricciani@polimi.it

³ Dipartimento di Ingegneria Industriale, Via Gradenigo 6/a, Università di Padova, 35131 Padova, Italy; giulio.fanti@unipd.it

* Correspondence: liberato.decaro@ic.cnr.it

Received: 31 December 2018; Accepted: 22 January 2019; Published: 24 January 2019



Abstract: Recently we have studied the unusual optical properties of the Veil of Manoppello, a canvas representing the face of Jesus Christ, and restored digitally the face, by eliminating the distortions of the anatomic details due the yielding of the very fine structure of the fabric. The aim of the present paper is to compare the restored face of the Veil with that visible on the Turin Shroud. In particular, the paper focuses on assessing whether the two images can be superimposed, i.e., whether they are different images of the same face. Indeed, some scholars have suggested that the Veil of Manoppello and the Turin Shroud show different images of the same face. We demonstrate that the face of the Turin Shroud, after a logarithmic transformation of the intensity and the correction of the background noise, shows cheeks' profiles, not visible before the digital processing, which overlap very well with those of the restored face of the Veil of Manoppello. These correlations between the two images of the face of Jesus raise the question of their historical relationship.

Keywords: Veil of Manoppello; Turin Shroud; Jesus Christ iconography

1. Introduction

Recently we have studied and discussed the unusual optical properties of the Veil of Manoppello [1,2], on which the face of Jesus Christ (Holy Face) is impressed. Several authors [3–10] have suggested that the image of the face on the Veil of Manoppello is superimposable to the image of the face of the Man of the Turin Shroud, a linen cloth indelibly impressed by the complete front and back images of a human body [11]. According to the Catholic tradition, it is the burial cloth in which Jesus of Nazareth was wrapped after his death. The present paper focuses on assessing whether the two images can be superimposed, i.e., whether they are different images of the same face. Indeed, any correlation between the two images of the face of Jesus would raise the question of their historical relationships.

The Veil of Manoppello is a rectangular canvas of $240 \times 175 \text{ mm}^2$. Its particular characteristic is being semitransparent. The face is visible on both sides (front–back) and, depending on the lighting and observation conditions, shows some differences in the anatomical details, as schematized in Figure 1. An analysis of the Veil has allowed us to clarify some aspects of the possible physical mechanism underlying its unusual optical behavior. It is a linen fiber fabric consisting of very thin threads, with a thickness of about 0.1 mm, separated by distances even twice the thickness of the threads, so that about 42% of the Veil is empty space. The fibers of the linen threads have been likely cemented by an organic substance of chemical composition similar to cellulose, presumably starch, therefore eliminating the air

between them. Such a structure causes the optical behavior of the medium to be intermediate between that of a translucent medium (cemented linen threads) and that of a transparent one (empty space between the threads).

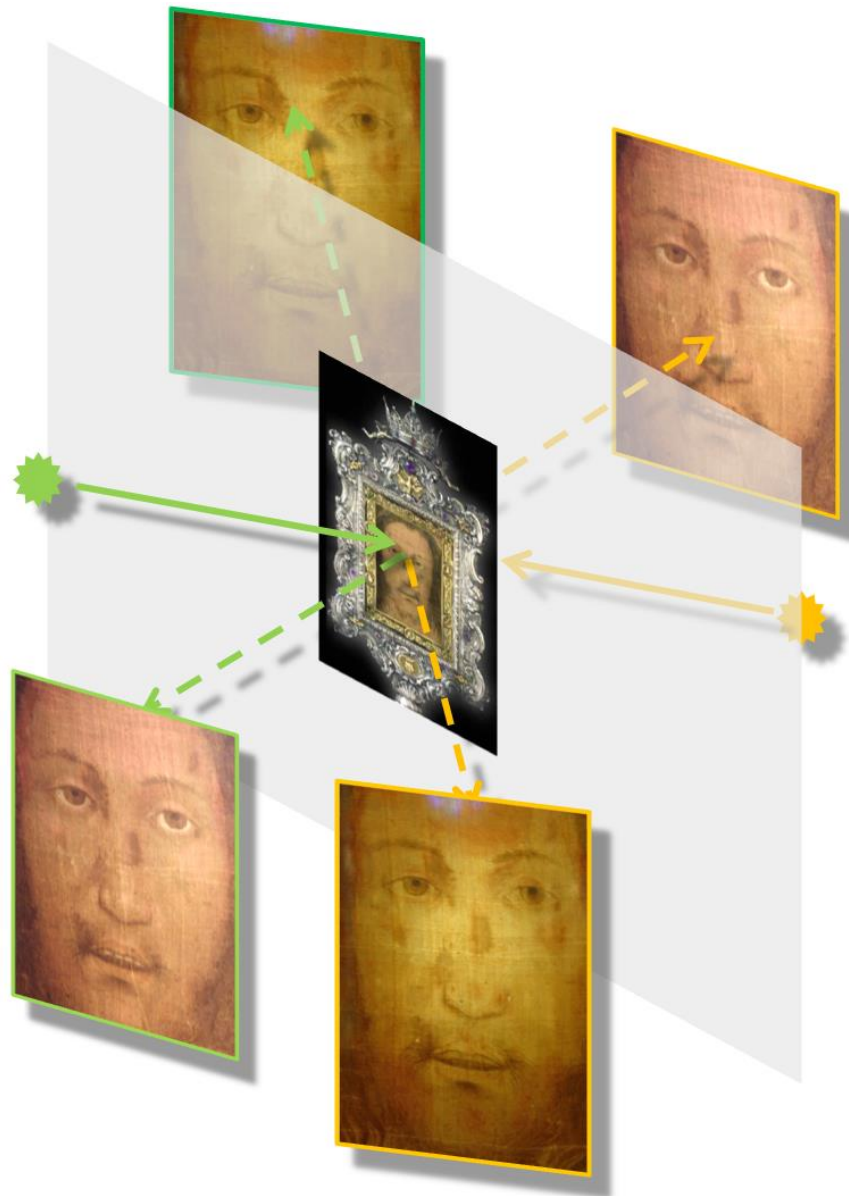


Figure 1. Image of the face visible on the Veil of Manoppello according to different lighting conditions: green, image lit by a light source located in front of the Veil; yellow, with the source located in the back.

Since the face is deformed due to distortions of the meshes of the Veil, caused by the yielding of the very fine structure of the fabric, first we have tackled the problem of digital image restoration to correct the face deformations which, in some regions of the image, are even about 1 cm [1]. Afterwards, we have performed a spectral analysis of the transmitted image [2]. As evidenced in the first study, its thin linen threads are translucent, presumably because it is starched, and light passes through them. As a result, the yellowish color of the ancient linen and starch contribute substantially to the final hues of the face, especially when the Veil is lit from the backside with grazing light. Spectrophotometry measurements show how the fabric absorbs the various chromatic

components. Through these quantitative evaluations, the colors of the transmitted face image have been compensated, by subtracting the contribution due to the yellowish coloration of the thin linen threads.

Furthermore, the rotational spectrum of the image has been studied after digital restoration [2]. The linear fit of the power spectrum in bi-logarithmic scale with a power law f^P provided a surprising value for the slope parameter $P = -3.49 \pm 0.03$. This result was unexpected because it is typical of photographs of human faces, not of portraits of human faces painted by artists, which instead have statistical properties of fractal type, with slope's values $P = -2.0$.

The Turin Shroud has been in the center of a lively scientific debate since the end of the XIX century, when the negatives of its photographs, taken by S. Pia in 1898, clearly showed the impressed image of a man. After carbon-14 dating [12] of a linen piece taken from a corner of the Turin Shroud, the scientific controversy regarding its authenticity exploded. Indeed, the medieval date, derived from carbon-14 analysis, is not compatible with the hundreds of data that, conversely, show the Turin Shroud is compatible with the historical period in which Jesus of Nazareth lived in Palestine, 2000 years ago [13,14]. Moreover, the carbon-14 dating results remain controversial [15,16], especially because of the likely non-negligible carbon contamination of the textile. This contamination can be due to many factors, including environmental ones [17,18]. Furthermore, a regression analysis on data of the Shroud's carbon dating has shown their statistical heterogeneity, together with an implausibility of spatial allocations of some measurements' samples [16]. It should be also noted, however, that five different independent methods agree in assigning the age of the Shroud to the first century Anno Domini (AD). Indeed, the spectrometric methods, based on FT-IR/ATR (Fourier Transform Infrared spectroscopy/Attenuated Total Reflectance) and Raman spectroscopy, dates the Shroud to 300 Before Christ (BC) \pm 400 years and 200 BC \pm 500 years, respectively [19]. The mechanical multi-parametric method, based on the analysis of five parameters, including the breaking load and Young's modulus and the loss factor, after an adequate calibration based on the results of two dozen samples of known age, assigns the Turin Shroud to the years 400 AD \pm 400 years [20]. Another chemical method, based on estimates of the kinetic constants for the loss of vanillin from lignin, attributes the Shroud an age in the range 1300 to 3000 years [21]. Finally a numismatic method [20], based on the comparison between the Shroud and the effigies of Christ reproduced on Byzantine coins, shows that the Relic was well known in the Byzantine Empire since 692 AD.

Several hypotheses have been proposed regarding the formation of the body image on the Turin Shroud, and several experiments have been performed for this purpose, but none of them has been successful in reproducing, both at macroscopic and microscopic levels, all the characteristics of the image. A critical compendium of the hypotheses and the experiments performed can be found in [22].

As already mentioned, some attempts to match the two images, namely the face visible on the Veil of Manoppello and the face of the body visible on the Turin Shroud, have already been attempted [3,10]. In particular, it was proposed that both images were formed in the same time, when the two fabrics were laying one upon another in the sepulcher where the body of Jesus Christ was deposited [3]. It is beyond the scope of the present work to discuss the origin of the two images. In fact, we want to assess the possible presence of correlations between the two images and realize whether they may be related to the face of the same man. If these correlations were found, it would imply a possible interdependence of the two images of the Holy Face, useful to reconstruct the historical route of the iconography of the most represented face in the world, that of Jesus Christ. In none of the previous attempts to superimpose the two images, however, the deformations of the Veil of Manoppello were corrected before the comparison. As we have corrected them in our first work [1], we think that the two faces, now, can be reliably compared with the aim of understanding whether the images are related, whether they belong to the same man, and obtaining, if possible, some additional information about their origin.

After this Introduction, in Section 2 we show that the logarithmic transformation of the intensity of the Turin Shroud image, measured both with visible light and Ultra-Violet (UV) radiation, highlights some interesting anatomical details, such as the cheeks' profiles. In Section 3, after [1,2], we further analyze the face visible on the Veil of Manoppello. In Section 4, we compare and match the two faces and, finally, in Section 5 we discuss the results and in Section 6 we draw some conclusions.

2. The Face of the Turin Shroud

In a recent paper a digital restoring of the hands' region of the Turin Shroud image visualizes anatomic details of the ending part of the right hand's thumb, never seen before [23]. This result shows the importance of the extraction of information of weak intensity embedded in the image impressed on the Turin Shroud. In this Section, just for this purpose, we apply the logarithm function to the luminance intensity of the image impressed on the Shroud. Usually, the logarithmic transformation of a variable (in other words, taking the logarithm of a positive variable) is used to compress data that range in large intervals, but it can also be used to enhance weak signals.

Figure 2a shows the original image of the Turin Shroud face's region, extracted from a 2002 photograph taken by the professional photographer G. C. Durante. Figure 2b shows the absolute value of the logarithm of Figure 2a, after the conversion in grey levels. As well known, the positive image $I(x, y)$ (normalized to unity) of Figure 2a shows the dark-light contrast inverted, as a function of the pixel coordinates x and y . Indeed, as shown accidentally by S. Pia in 1898, the complementary image $1 - I(x, y)$ gives the right luminance levels for a human face. Moreover, it is well known that the complementary image contains tridimensional (3D) information, in some way related to the distance of the anatomical parts from the burial cloth [22]. Obviously, this 3D information is already present in the positive image, but with inverted contrast; i.e. light and dark inverted.

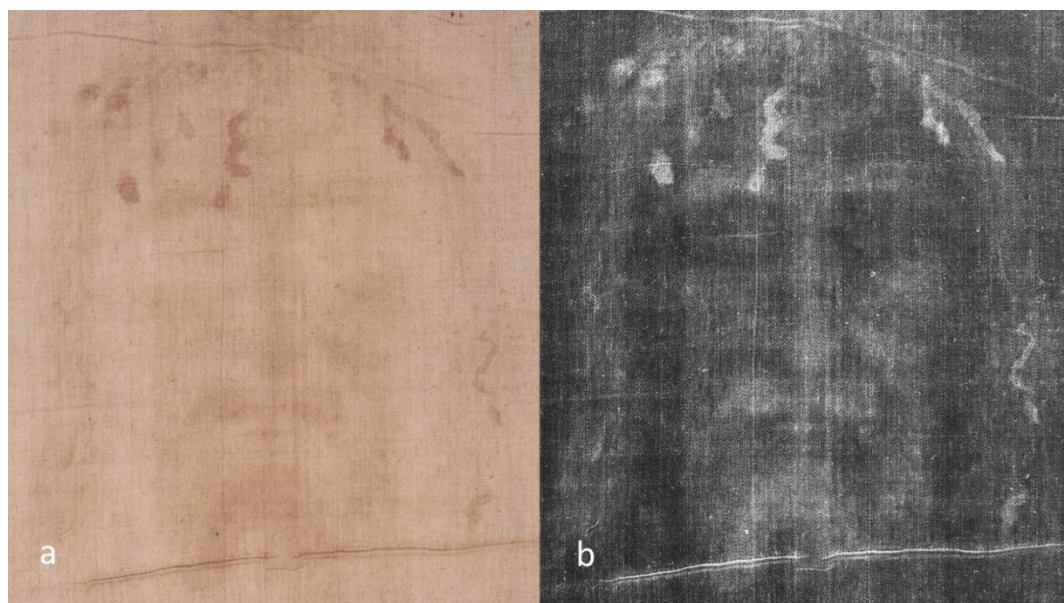


Figure 2. (a) Original positive image of the Turin Shroud face's region, extracted from a 2002 photograph taken by the professional photographer G. C. Durante; (b) absolute value of the logarithm of Figure 2a, after the conversion in grey levels.

After having converted Figure 2a in grey levels, Figure 2b shows the absolute value of the logarithm of the intensity. Let us note how effectively the logarithmic transformation of the intensity, by enhancing weak signals, depicts the face with the right contrast and proportions. However, by using the logarithmic function obviously also noise is enhanced, therefore, the image shown in Figure 2b requires some digital filtering to extract the desired information from artifacts and noise. For example, there are several vertical stripes, white and dark lines and bands that affect the image. To eliminate them we have used a digital restoring approach similar to that described in [23]. The same approach can be used on what is visible on the Turin Shroud when the cloth is seen in reflection with UV radiation. Figure 3 shows the UV image, taken by G. B. Judica Cordiglia [24], compared with the face seen with visible light, after processing the two images with the same procedure: logarithmic transformation of the intensity, background stripes' correction and partial denoising. It is interesting to note that this technique visualizes the cheeks' profile much better than the original version.

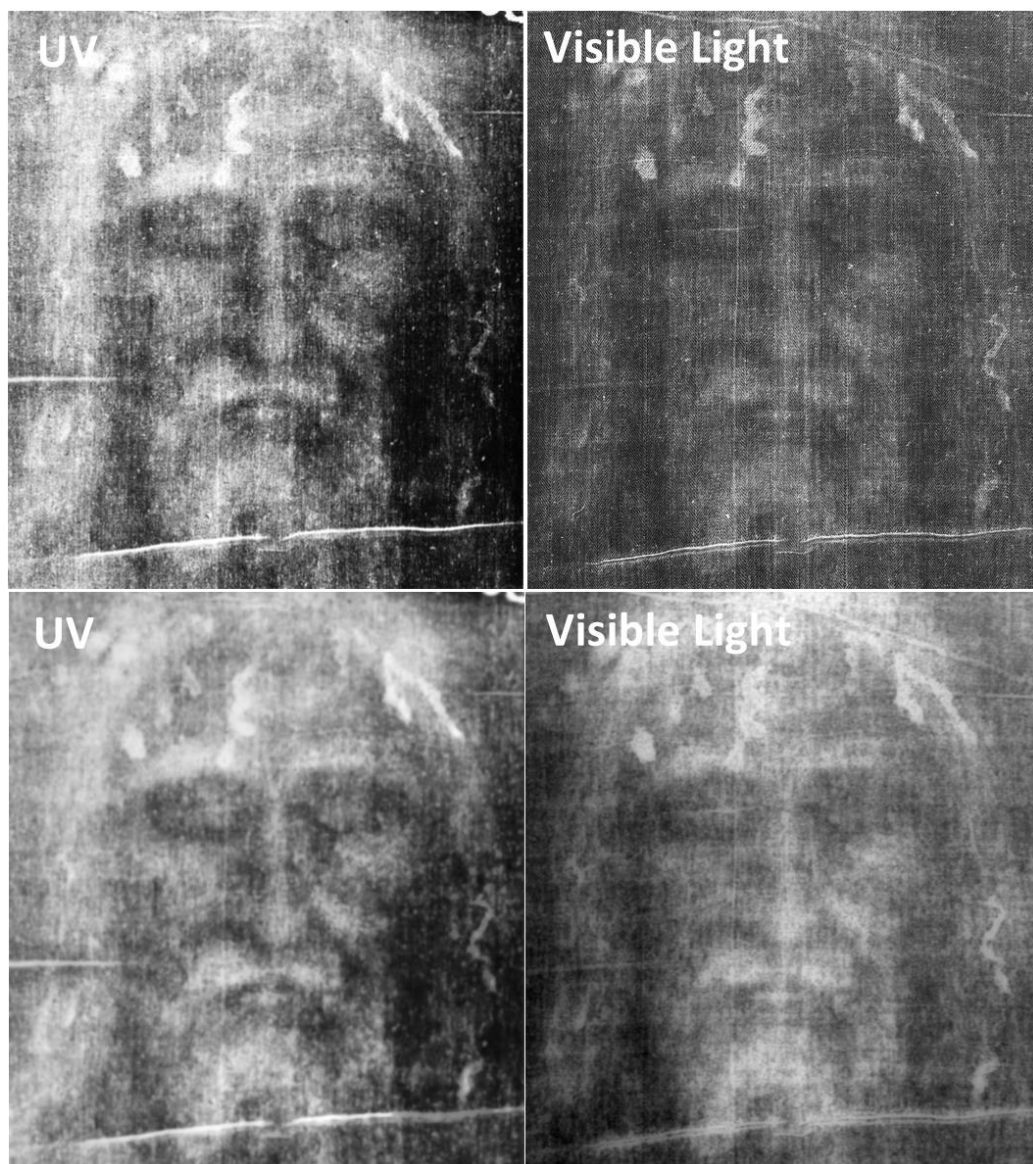


Figure 3. In the upper panels: absolute value of the logarithm of the Turin Shroud face seen with ultra-violet (UV) (left) and visible light (right), after the conversion in grey levels. In the lower panels: same images after background stripes' correction and partial denoising. The original UV acquisitions are by G. B. Judica Cordiglia.

Judica Cordiglia lit the cloth with two mercury vapour lamps to provide ultraviolet radiation suitable for photographic shooting. G. Enrie, in 1931 [25], used orthochromatic material that loses anatomic details to give high-contrast images, due to the few grey levels available. Conversely, panchromatic material used by Judica Cordiglia allowed him to record all the colors, and to transform them into grey images, with the result of obtaining final images full with anatomic details. In particular, Figure 3 clearly shows the importance of information about the Man's face, such as the cheeks' profiles, embedded in lower intensities, which can be better visualized only after correcting the background stripes.

3. The Face of the Manoppello Veil

In [2] we have already shown that the evaluation of the preferential absorption of the blue chromatic component, with respect to the others, obtained from Spectrophotometry measurements, gives the possibility to restore the colors of the face of the Manoppello Veil, when seen in transmission in back-lighting conditions. The image, restored chromatically, presents shades more similar to the skin color of the human face. If we extend the digital restoration to a larger part of the image, adding also the hairs, we obtain the full image shown in Figure 4. The image shown on the right panel (Figure 4b) has been obtained by applying the restoring procedures described in [1,2] to a larger image of the face visible in transmission on the Veil, showing beard and hair. A contrast enhanced version of the complete face, visible on the Veil, has been reported in the left panel (Figure 4a).

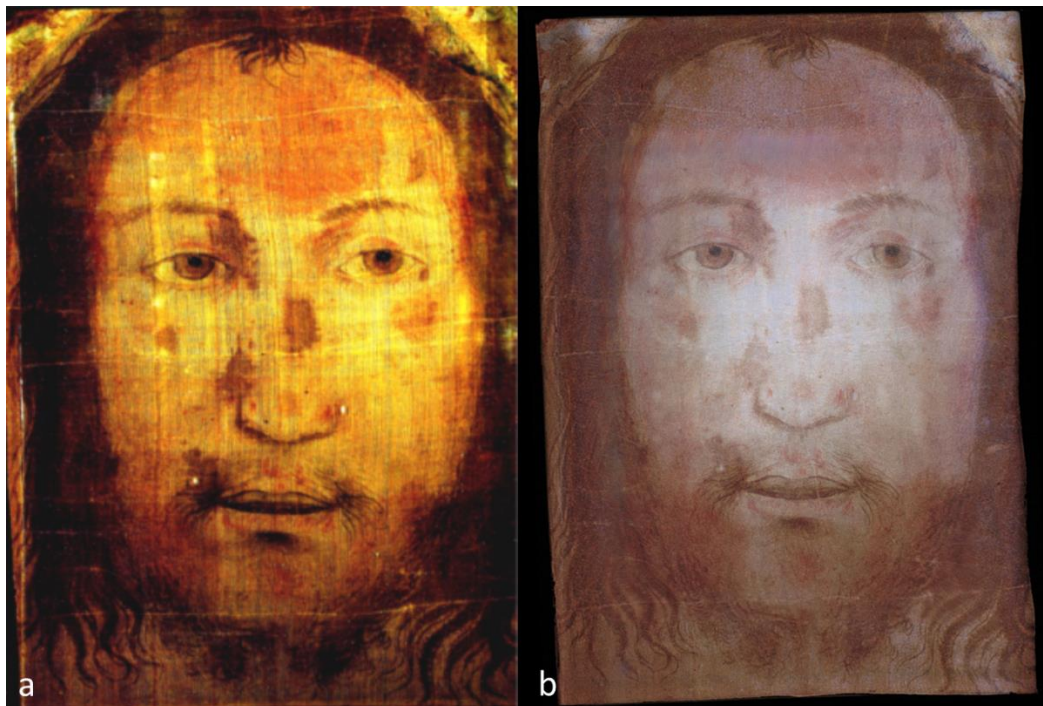


Figure 4. (a) Contrast enhanced of the original face, and (b) digitally-restored face, visible in transmission on the Veil of Manoppello with back-grazing illumination.

The enhancement of the contrast in Figure 4a is useful to better highlight several wounds, visible on the face as red patches. Indeed, the history of the Veil of Manoppello could be related to that of the Veil of Veronica, the relic of the face of Christ that the Christian tradition binds to his Passion and death.

From the comparison between Figure 4a,b, it is evident the effect of the distortion of the texture in the deformation of the face of Figure 4a, as discussed in detail in [1]. The original aspect ratio (width/height) of the face is $17.5/24.0 = 0.73$ (Figure 4a). After the correction of distortion the mean aspect ratio is 0.70 (Figure 4b). The slight reduction could be related both to local distortion and to a global tetragonal deformation of the Veil. Indeed, as already discussed in [1], the constraint for the Veil, to remain bound to the glass reliquary's frame, could have developed some tensions, with horizontal and vertical components of the forces that are not necessarily equivalent, leading to a possible global tetragonal deformation of the fabric's mesh.

4. Comparison between the Faces of the Turin Shroud and the Manoppello Veil

As mentioned, some scholars have tried to match the face visible on the Veil of Manoppello to the face of the Man visible on the Turin Shroud [3,10]. However, as already noted, these scholars did not eliminate the distortions due to the yielding of the Veil fabric before doing the comparison. Indeed, as shown in [1,2], it is possible to highlight a consistent yielding of the Veil fabric, up to about 1 cm in some areas.

In Figure 5a we show the face of the Turin Shroud visible with UV, after having applied the logarithmic transformation, corrected the stripes of the background [23], and de-noised the final result. In Figure 5b the same digital restoring procedure is applied to the face of the Turin Shroud seen with visible light. In Figure 5c we averaged Figure 5a,b, after having co-registered each other by aligning the hematic traces and the extended tissue defects, for example the long fold on the beard present in both images. Figure 5d shows the digitally—restored Manoppello face. Figure 5e shows the original photograph of the region of the face of the Turin Shroud. Figure 5f shows the original photograph of the Veil of Manoppello (back side), taken by the third author, with the contrast enhanced. In each image the blue rectangular box defines the region of the face. The dashed horizontal and vertical red lines are drawn, for reference, in correspondence of some main anatomical details. All the images are shown in the same spatial relative scale, in a ratio 1:1.

From the above figures it is important to note that the Face of the Turin Shroud and the digitally restored face of the Veil have the same proportions. Because the red dashed lines intersect the main anatomic details, any ratio between distances in the two images is the same, within an uncertainty related to the spatial resolution of the Turin Shroud image, equal to 4.9 ± 0.5 mm [26]. For example, the ratio between the distance of the eyebrows' center to the end of the nose, and the eyes' distance is equal to 1.21 ± 0.05 for the Turin Shroud and 1.23 ± 0.05 for the face on the Veil. For the Turin Shroud the uncertainty, due to the spatial resolution, on distances of the order of 10 cm is about 5%. For the digitally restored face, visible on the Veil, the image is more detailed, but the Veil has a semi-transparent structure because its threads are separated by spaces up to twice their thickness. Thus, the resolution of the face visible on the Veil is related to its discrete structure, and can be set equal to the period of the threads. In [2] we showed that, from the distance of the secondary Fast Fourier Transform peaks from the main maximum, it is possible to obtain information about the spatial periodicity of the weft and warp of the fabric, equal to 0.339 ± 0.005 mm and 0.395 ± 0.005 mm, respectively. Thus, the best resolution of the image can be set equal to the minimum of the local periodicity of the vertical threads, equal to $0.339 \approx 0.34$ mm. Therefore, for the face, the uncertainty on distances of the order of 10 cm is about 3.4%, due to the discrete structure of the threads. Therefore, within a maximum uncertainty of about 5%, the face of the Turin Shroud and the digitally restored face visible on the Veil are characterized by the same proportions and distances between the anatomical details. This finding is particularly evident if we compare the cheeks' profiles of Figure 5c, where both the left and the right cheeks are well visible, with those of Figure 5d. It should be stressed that in the original Turin Shroud

image, namely the image visible before the invention of photography, the face is much narrower. Thus, if we compare Figure 5e with Figure 5f, a great difference in the face width is particularly evident, well beyond the maximum uncertainty of 5%.

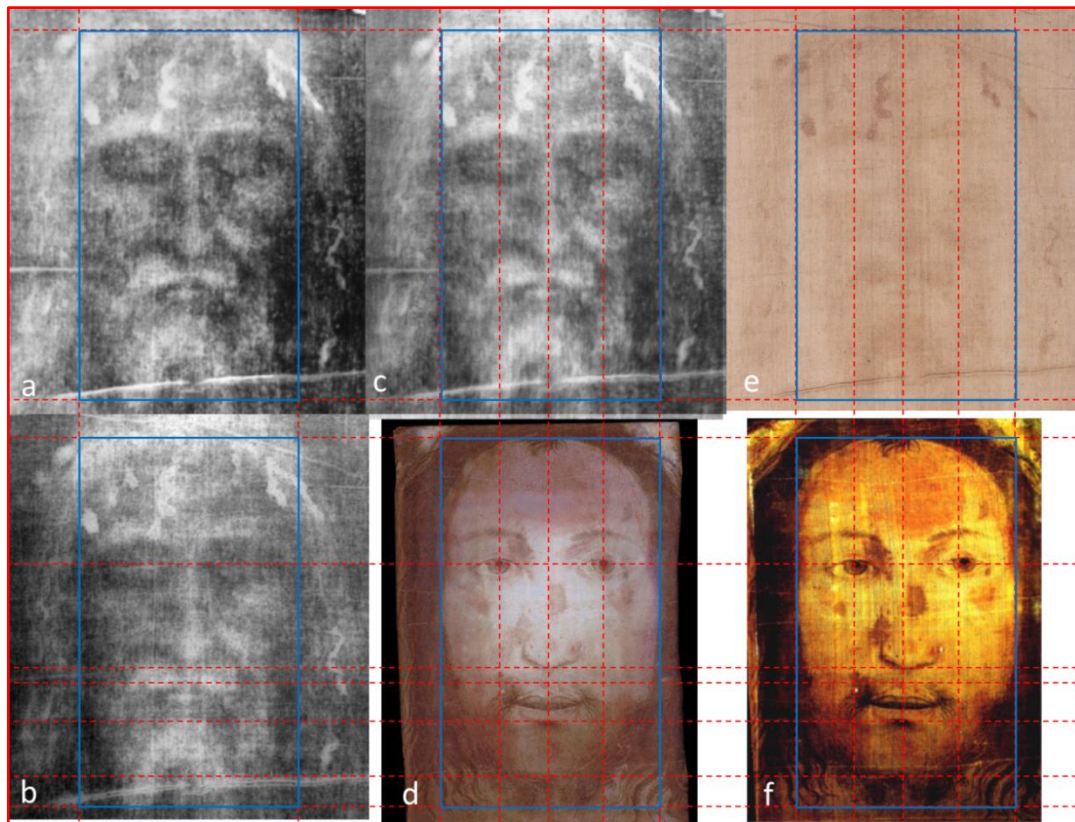


Figure 5. (a) Turin Shroud face visible with UV. (b) Turin Shroud face seen with visible light. (c) Averaging of Figure 5a,b. (d) Digitally restored Manoppello face. (e) Original photo of the Turin Shroud linen cloth, in the region of the face. (f) Original photo of the Veil of Manoppello (back side), with the contrast enhanced.

Conversely, as it is evident by comparing the blue boxes of Figure 5c,d, the two faces, displayed in the same relative scale, are well proportioned regardless the slightly different perspective of the two images. Indeed, the Turin Shroud face seems to be slightly rotated to the right, while the Manoppello face seems to be slightly rotated to the left.

Furthermore, in Figure 6 some relief and contour plots, realized with the software Wolfram Mathematica, allows us to visualize the well-known fact that the image of the Shroud contains 3D features, for example with the nose in relief with respect to the other parts of the face. Before calculating the 3D plot relief, the image has been suitably binned by a factor 10×10 and smoothed with a bilateral filter of the software Wolfram Mathematica with spatial width of 10 pixels, to leave the principal anatomic details, because the spatial resolution of the initial image is only about 0.5 cm. Indeed, the original image was 5310×4744 pixels, to which corresponds an area of about 25.5×23.0 cm². Thus, any pixel corresponds to a surface of about 0.05×0.05 mm². The binning 10×10 leads to a binned pixel 0.5×0.5 mm². Thus, the smoothing due to the bilateral filter on 10 binned pixels, i.e., on an area of 5×5 mm², can be directly related to the image spatial resolution.

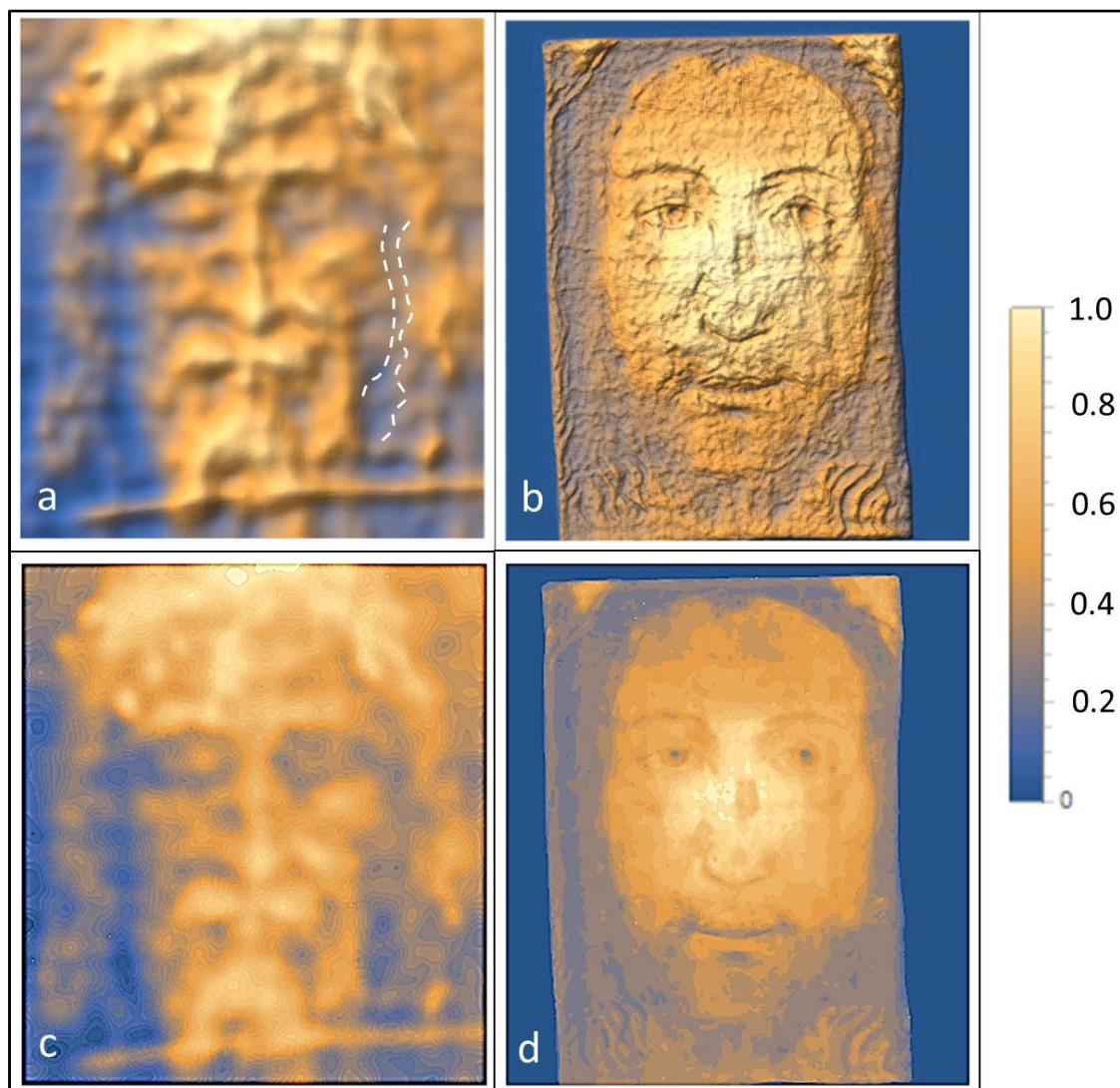


Figure 6. (a) Relief plot of the Turin Shroud face shown in the previous figure (panel 5b). (b) Relief plot of the Manoppello face visible in the previous figure (panel 5d). See main text for more details. (c) Contour plot of the Turin Shroud face shown in Figure 5b. (d) Contour plot of the Manoppello face visible in Figure 5d.

Differently from the Turin Shroud, the relief plot of the face visible on the Manoppello Veil partially lacks tri-dimensionality.

The graininess of the plot relief shown in Figure 6b could be related to the semi-transparency of the Veil, leading to local maxima of transmitted light among the threads. It is interesting to note that in the Turin Shroud face it is slightly visible the profile of the right cheek, highlighted by a dashed white curve in Figure 6a, separated by the profile of the hairs, also highlighted with another dashed white curve. The right cheek appears as it was swollen. It should be noted that also in the face of Manoppello, shown in Figure 6b, it is visible a swollen right cheek.

In Figure 7 we superposed the digitally restored face visible on the Veil (Figure 7a) to that visible on the Shroud, after the logarithmic transformation of the intensity, the correction of the background stripes and de-noising the final result (Figure 7b).

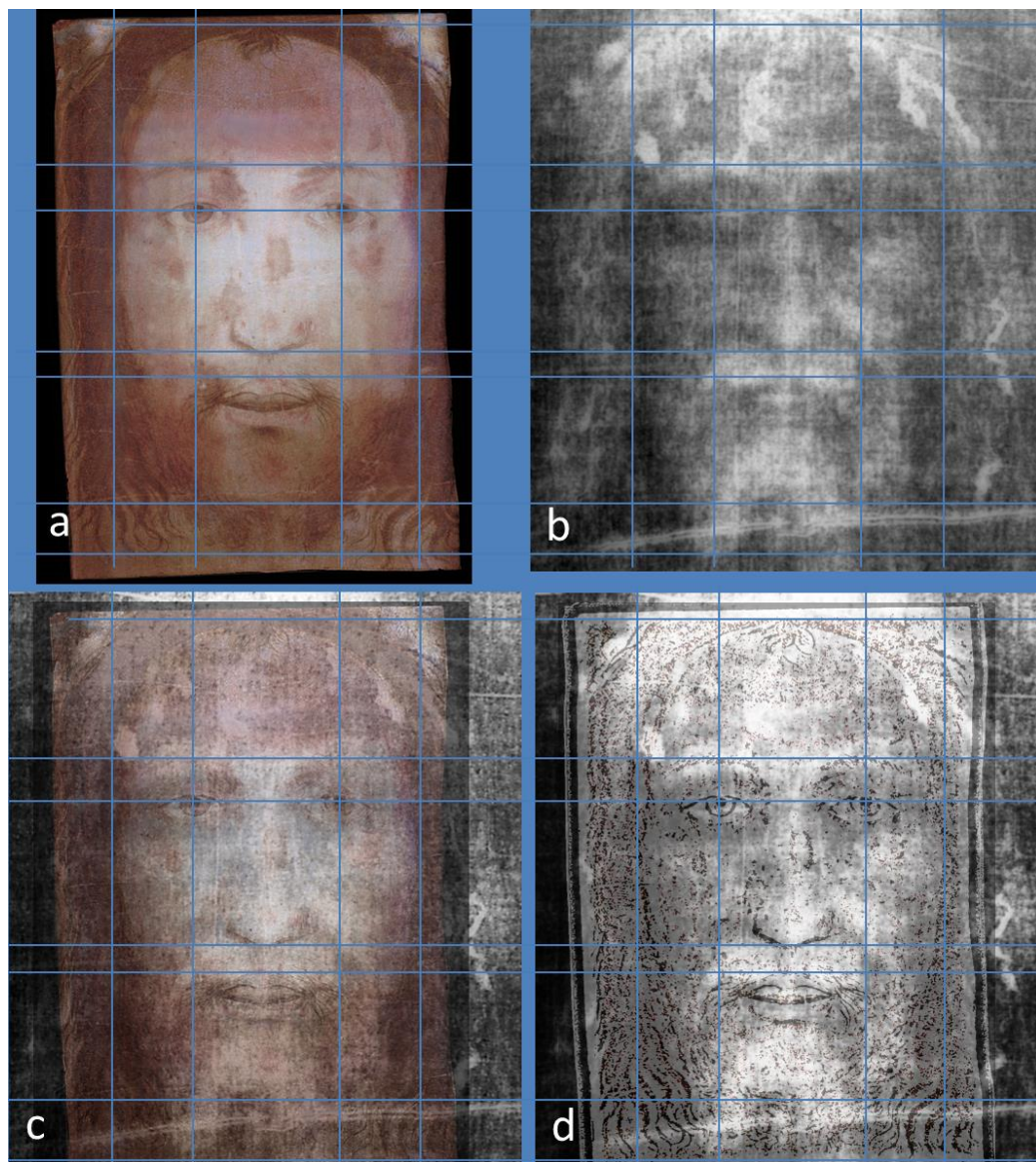


Figure 7. (a) Digitally-restored Manoppello face. (b) Turin Shroud face seen with visible light. (c) Averaging of 50% of Figure 7a and 50% of Figure 7b. (d) Averaging of the anatomical face profiles of Figure 7a with Figure 7b.

The result of the superposition of 50% of Figure 7a and 50% of Figure 7b is shown in Figure 7c, aligned with the Turin Shroud image by centering the eyes' regions. In Figure 7d we have extracted the face profiles from Figure 7a, by increasing 100% both the image contrast and sharpness, and by reducing the grey levels until leaving only the most intense image variations. Then, we have added it to Figure 7b, to further investigate and assess the matching of the two faces.

To be more detailed, in Figure 8a we show the logarithm of the intensity with removed background stripes. In Figure 8b we report the average $\langle I \rangle$ of the rows of Figure 8a in the blue box of Figure 8a (blue profile) together with the average $\langle I \rangle$ of the rows of Figure 8c in the green box (green profile), where Figure 8c shows the intensity without removed background stripes, together with the average $\langle I \rangle$ of the rows of Figure 8d in the red box (red profile). The vertical blue lines intersect the two minima in the blue profile corresponding to the cheeks' width for Figure 8a. The vertical green lines intersect the two minima in the green profile corresponding to the cheeks' width for Figure 8c.

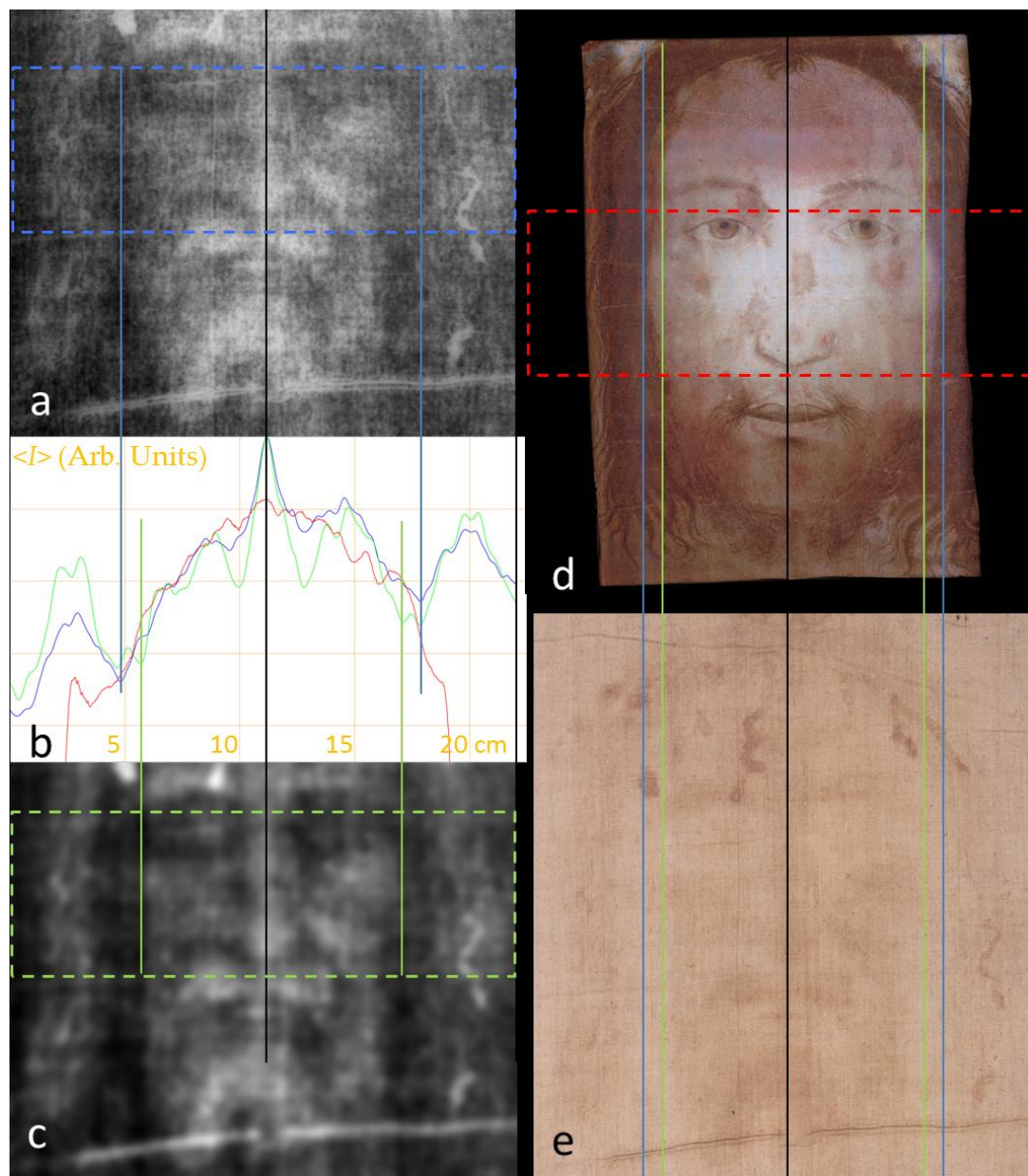


Figure 8. (a) Logarithm of the intensity with removed background stripes. (b) Blue profile: average of the rows of Figure 8a in the blue box; green profile: average of the rows of Figure 8c in the green box. (c) Intensity without removed background stripes. (d) Digitally-restored Manoppello face. (e) Positive image of the Turin Shroud.

Let us note that the width of the cheeks is underestimated in Figure 8c by about 1.8 cm with respect to Figure 8a, well beyond the finite image resolution of about 0.5 cm, if we do not remove the vertical background stripes and do not calculate the logarithm of the intensity.

By comparison, in Figure 8d we show the digitally restored face of Manoppello compared with the positive image of the Turin Shroud (Figure 8e). The relative distance of the green and blue vertical lines is the same of Figure 8a–c, obtained by the minima of the averaged profiles shown in Figure 8b. Let us note that the face cheeks' width of Figure 8d agrees well with the face cheeks' width of Figure 8a, as it can be also evaluated by comparing the red average profile, measured in Figure 8d with the blue average profile measured in Figure 8a. Conversely, by using the positive Turin Shroud image (Figure 8e), the estimated cheeks' width would be also smaller than what is obtainable in Figure 8c; i.e.,

by the negative image. In other words, if the face size is calculated by direct inspection of Figure 8e the underestimation of the cheeks' width would also be more than 14%, as it can be evinced by the vertical blue and green lines used as a reference for Figure 8a,c–e. Therefore, the digital restoration of the two faces seems to be a pre-requisite before comparing them, otherwise systematic errors in the determination of the cheeks' widths would be unavoidable.

As a final combination of the face of the Turin Shroud and the face of the Manoppello Veil we can apply the Fourier synthesis. In this technique, instead of combining the two images in direct space, they are combined in the dual space. To perform this task, it is sufficient to calculate the Fast Fourier Transform (FFT) of the two images, each of which gives a bi-dimensional function of the amplitude and of the phase. In their combination in the dual space we could use the amplitude of an image and the phase of the other. However, the phase function contains much more information than the amplitude function. Therefore, using either the phase of the FFT of the Turin Shroud face or that of the FFT of the Manoppello face, will lead to a dominant role of one of the two images in the final Fourier synthesis. To avoid this dominance, we can use a linear combination of phase and amplitude of both images. Then, to obtain the final Fourier-synthesis image, it is sufficient to calculate the inverse FFT of the combined FFT of the two initial images and keep either the real part or, almost equivalently, the absolute value. The amplitudes have been taken by a linear combination of the FFT of Figure 7a (Manoppello face) and Figure 7b (Turin Shroud face), with weights equal to $2/3$ and $1/3$, respectively; while the phase values have been taken by a linear combination of the FFT of Figure 7a,b, but with complementary weights with respect to amplitude, thus equal to $1/3$ and $2/3$. Thus, for the amplitudes the weights are $(2/3, 1/3)$, for the phases they are $(1/3, 2/3)$, where the first value refers to the Manoppello Face FFT and the second to the Turin Shroud face FFT. The particular value $2/3$ has been chosen for the following reasons. As previously discussed, the spatial resolution of the face visible on the Veil is limited by the discontinuous fabric, with minimum distance between the threads equal to about 0.34 mm. In the case of Turin Shroud image the fabric is more continuous. Indeed, although the image resolution is about 5 mm the pixel size can be chosen much smaller.

We have already verified that the Turin Shroud face image, analyzed in this work, has a pixel size of about 0.05 mm. However, it is characterized by a spatial resolution such that also a pixel binning of a factor of 10 does not worsen the visible anatomic details. The ratio of 0.34 mm for the Manoppello face and the 10-binned pixel size, equal to about 0.5 mm, for the Turin Shroud face, is 0.68, i.e., close to $2/3$. Therefore, this choice of the weights includes in the composite image both the higher resolution amplitudes contained in the Manoppello face FFT, and preserves the anatomic details visible on the Veil up to their better spatial resolution, and the 3D information contained in the Turin Shroud FFT phases. Thus, after the linear combination of FFTs, we can calculate the inverse FFT to obtain the composite image. The final image obtained is shown in Figure 9a. Notice that the weights (0.5, 0.5) for both amplitudes and phases in the Fourier synthesis would have given the same final image that is obtained directly by adding the two images without any Fourier synthesis. On the other hand, the weights (1.0, 0.0) for amplitudes and (0.0, 1.0) for phases, or vice versa, would have given the dominance of one image on the other.

Returning to the final image, shown in Figure 9a, Figure 9b shows its contour plot. By comparing Figure 9b with Figure 6c,d it is evident that the new image contains 3D information and some anatomic details of both the Turin Shroud face and the Manoppello face, but combined in a different way with respect to Figure 7c, the latter obtained by the most common direct average of the two faces, or, which is the same, by performing a Fourier synthesis with weights equal to (0.5, 0.5).

If we compare the average intensity profiles $\langle I \rangle$ of the rows of Figure 8a (Turin Shroud's face, blue profile) and of Figure 9a (combined image in the FFT dual space, red profile), in the regions corresponding to the blue and red rectangular boxes of Figure 8a,d, respectively, we obtain the result shown in Figure 10.

From the comparison between the two profiles of Figure 10b with the red one shown in Figure 8b we can see how that corresponding to the face of Manoppello (red profile of Figure 8b) has not an

evident maximum of intensity in correspondence of the nose, in the center of the plot. Conversely, the red profile of Figure 10b, corresponding to the combined image, shows the presence of an evident maximum in correspondence of the nose. Moreover, by comparing Figure 10c and Figure 10b it is interesting to note that the cheeks' profiles are more evident when we combine the UV and the visible light measurements (Figure 10c), are even more delineated after the Fourier synthesis of the Turin Shroud face, seen with visible light, with the digitally restored Manoppello face.

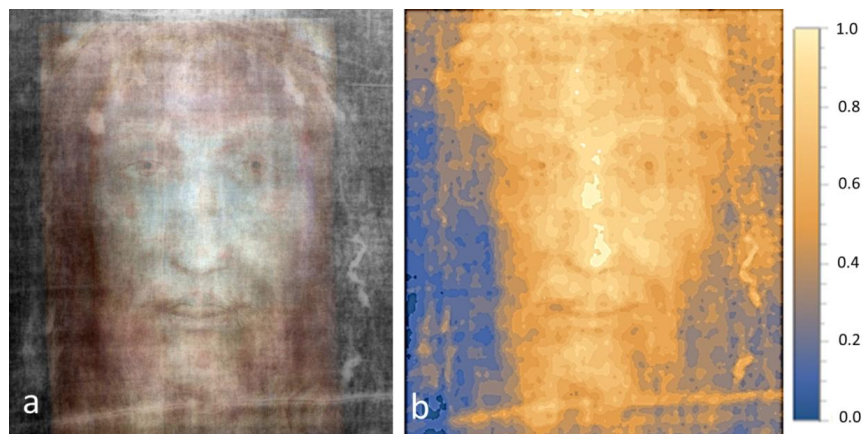


Figure 9. (a) Fourier synthesis between Figure 8a,d. (b) Contour plot of Figure 9a. See main text for more details.

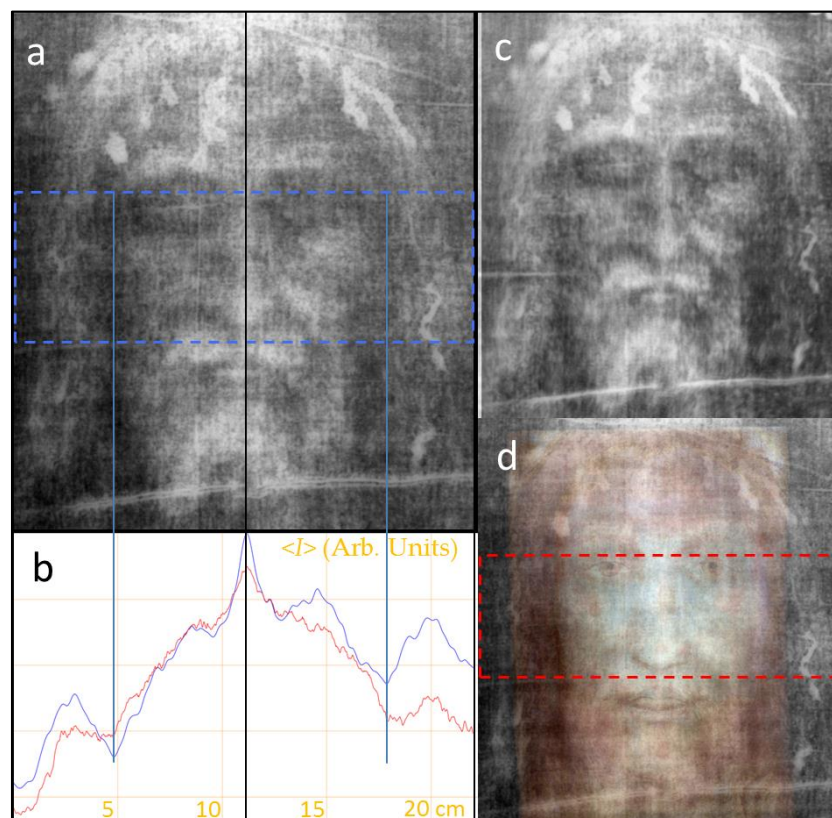


Figure 10. (a) Logarithm of the intensity with removed background stripes. (b) Blue profile: average of the rows of Figure 10a in the blue box; red profile: average of the grey levels of the rows in the red box of Figure 10d, obtained by the Fourier synthesis. (c) Average of UV and visible Turin Shroud images. (d) Figure 9a, obtained by the Fourier synthesis.

5. Discussion

We have shown that, within a maximum uncertainty of 5%, the face of the Turin Shroud and the digitally restored face visible on the Manoppello Veil are characterized by the same proportions and distances between their anatomical details. With this regard, it should be stressed that in the original Turin Shroud image, namely the image visible before the invention of photography, the face is much narrower, well beyond the maximum uncertainty of 5%. Let us remark that the face visible on the Turin Shroud studied in this paper has been obtained by calculating the logarithm of the image intensity and by correcting the background. This digital procedure, never done before, has allowed seeing quite clearly the cheeks' profiles, after the background stripes' correction, as shown in Figure 3 for both the UV and visible light images. Now, the cheeks' profile of the Turin Shroud face and that of the digitally restored Manoppello face are very similar, as evidenced both by the blue rectangular box in Figure 5 and by the image average profiles shown in Figure 8. Thus, the digital restoration of the two faces is a fundamental prerequisite before their comparison because, otherwise, systematic errors in determining the cheeks' widths would be unavoidable.

Further correlations between the two faces are also noticeable, such as the swelling of the right cheek. However, there are some evident differences, for example the "epsilon" blood trace on the forehead, visible only on the face visible on the Turin Shroud. This difference may be due to the fact that the image of the Manoppello Veil, according to tradition, was allegedly impressed during the uphill to Calvary when a woman, known as Veronica, offered a veil to Jesus to wipe his face, while the Shroud image was impressed later in the sepulcher. Therefore, the typical reversed "3" wound on the forehead may have been formed in this time interval. The moustache between the nose and the mouth seems to be different in the two cases, also for the fluids leaked by the nasal cavities of the corpse wrapped in the Shroud that could have affected locally the image formation process.

B. Paschalis Schlöemer has suggested that both the Turin Shroud and the Manoppello Veil images have been formed in the same time, with the two fabrics laying one on another [3]. This is not our opinion. In fact, by taking into account all the above mentioned differences, it seems more reasonable to conclude that the two images were not impressed at the same time. Indeed, as shown in Figure 5, the Turin Shroud face seems to be slightly rotated to the right, while the Manoppello face seems to be slight rotated to the left. Moreover, the latter shows the mouth slightly open, while the Turin Shroud face shows the mouth completely closed.

Differently from the Turin Shroud, the relief plot of the face visible on the Manoppello Veil (Figure 6) shows some lacks of tri-dimensionality, in particular in correspondence of some anatomic parts characterized by smaller intensities due to their own color, such as the pupils, hairs, and beard. Also, the nose is flattened with respect to the cheeks. The contour plots of the Turin Shroud face drawn in Figure 6c,d show that the maximum intensity of the nose is found at its end. Conversely, in the face there is a region around the nose characterized by higher values of the intensity. This finding could be related to the fact that the fabric of the Veil is semi-transparent and, very likely, in correspondence of the central region of the face, seen in transmission, more light has gone through the Veil, leading to a lack of correct tri-dimensionality in the region.

However, the different tri-dimensional content of the two images could be also related to the fact that the Turin Shroud body image is not a painting, even if the chemical/physical process of image formation is not yet assessed [22]. Indeed, the Turin Shroud body image color depends only on a physical/chemical reaction of the outermost layer of the linen fibers compositing it. Traces of human blood are also imprinted on the Turin Shroud but they are not present in the other images, indicated by Catholic tradition as *acheiropoietos*, i.e., not made by human hand (Tilma of Guadalupe, Veil of Manoppello, some handkerchiefs of St. Pio from Pietralcina, and so on), with the exception of the Sudarium of Oviedo, which has no images [20]. While for the other *acheiropoietos* images we do not know if they have actually been in contact with parts of a human body, for the Turin Shroud we are sure that it was put on a corpse, in a way to touch the tip of the nose and leave a free distance between nose and cheeks. Therefore, the image of the tip of the nose is the most clearly represented on the

Shroud, leading also to tri-dimensional information embedded. Instead, even if we assumed that also the image on the Manoppello Veil was formed by contact, we should consider that its fabric is much softer, so that, if it was used to wipe the face of Jesus Christ during his Calvary, it touched his eyes and mouth for a moment and must have rubbed both sides of the nose. Therefore, differently from the Turin Shroud image, on the Veil one should expect clearer and sharper images of the eyes and mouth, and a more diffuse and large image of the nose. Nevertheless, tri-dimensional information can be transferred from the Turin Shroud face to that visible on the Manoppello Veil, through the Fourier synthesis approach, as shown in the Figures 9 and 10.

Finally, under the hypothesis that both the Turin Shroud and the Manoppello Veil are related to the same man, Jesus Christ, we can further compare the two images by considering the red stains that should be related to his Passion, described in the Gospels. In comparing them, however, we must remember that our analyses indicates that the two images correspond to different times of his Passion. The Shroud image formed in the sepulcher when the linen sheet wrapped a bloody dead man, whose blood crusts were transposing on the fabric during a fibrinolysis process. The face on the Manoppello Veil formed when Veronica used her veil to clean Jesus' face, just before the crucifixion. Nevertheless, even if the two images correspond to different moments, we can find many similar details, especially those relative to the bloodstains. With reference to Figure 11, we can find, among others, several congruence points between the two images.

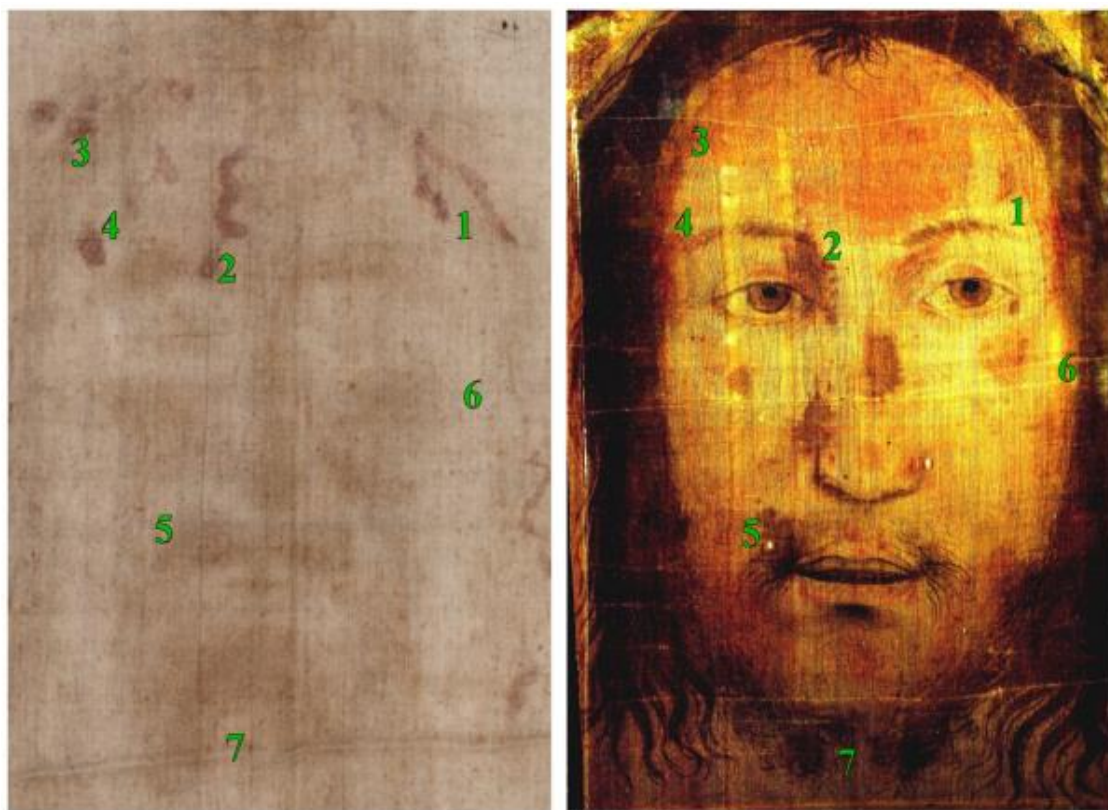


Figure 11. Some congruence points detected between the Shroud face (left) and the Manoppello Veil (right). Legend: 1. Blood leakage probably due to a thorn of the crown; 2. Blood leakage probably due to a wound on the left eyebrow; 3. Blood leakage probably due to a thorn of the crown; 4. Blood leakage probably due to a wound on the left temple; 5. Blood on the left moustache probably due to a blow; 6. Swollen right cheek probably due to a club; 7. Bipartite beard.

6. Conclusions

All the above results have shown that the face of the Turin Shroud and the digitally—restored face of the Manoppello Veil overlap very well. Thus, in our opinion, it is possible to conclude that the two images are related. In particular the right cheek's profile of the two faces is very similar, although the one visible on the Turin Shroud is evidenced only by the logarithmic transformation of the intensity, and after the background correction of the vertical stripes. Without these steps, the cheeks' profiles of Turin Shroud Man appear much more elongated, as confirmed by the analysis shown in Section 4. Their correct width is, in fact, not directly visible on the positive image of the Turin Shroud, and can be established only after an articulated and complex digital analysis. This is one of the main results of our study. The correlations between the two images implies an interdependence. This finding could be useful to reconstruct the historical route of the iconography of Jesus Christ. We will address this topic in a forthcoming work.

It still remains unsolved how the faces of both the Shroud and the Veil were impressed on the fabric. In the case of Manoppello Veil, we still do not know the nature of its original colors and technique used to realize the image. While the Shroud has been studied more in depth, the Veil of Manoppello has still much information to be discovered and discussed, including the striking fact that its proportions are so similar to those of the Turin Shroud face, such as the detailed digital analysis on the cheeks' width has shown. To find possible and convincing answers to all the above open questions, further characterizations of the Veil of Manoppello are desirable and necessary. They could help also to clarify the history of the face most represented in the History of Art, that of Jesus Christ.

Author Contributions: All authors have contributed to write the paper and discuss the results. L.D.C. performed the image analyses.

Funding: This research received no external funding.

Acknowledgments: Paul Badde took the original photographs of the Manoppello face shown in Figure 1; G. B. Judica Cordiglia took the UV original photo and G. C. Durante took the visible light photograph of the Turin Shroud Man's face analyzed in the paper.

Conflicts of Interest: The authors declare no conflict of interest.

References

- De Caro, L.; Matricciani, E.; Fanti, G. Imaging analysis and digital restoration of the Holy Face of Manoppello—Part I. *Heritage* **2018**, *1*, 19. [CrossRef]
- De Caro, L.; Matricciani, E.; Fanti, G. Imaging analysis and digital restoration of the Holy Face of Manoppello—Part II. *Heritage* **2018**, *1*, 24. [CrossRef]
- Paschalis Schlöemer, B. *Der Schleier von Manoppello und das Grabtuch von Turin*; Resch Verlag: Innsbruck, Austria, 1999; ISBN 3-85382-068-9.
- Wilson, I. *Holy Faces, Secret Places*; Doubleday & Co.: New York, NY, USA, 1991; ISBN 0-385-26105-5.
- Badde, P. *The Face of God*; Ignatius Press: San Francisco, CA, USA, 2010; ISBN 9781586173388.
- Bulst, W.; Pfeiffer, H. *Das Turiner Grabtuch und das Christusbild—Das Echte Christusbild*; Verlag Josef Knecht: Frankfurt, Germany, 1991; ISBN 378200633X.
- Resch, A. *Das Antlitz Christi*; Resch Verlag: Innsbruck, Austria, 2005; ISBN 3-85382-077-8.
- Gaeta, S. *L'enigma del Volto di Gesù*; Rizzoli: Milano, Italy, 2010; ISBN 9788817039949.
- Górny, G.; Rosikoń, J. *Witnesses to Mystery. Investigations into Christ's Relics*; Ignatius Press: San Francisco, CA, USA, 2013; ISBN 9781586178444.
- Jaworski, J.S.; Fanti, G. 3D Processing to Evidence Characteristics Represented in Manoppello Veil. University of Warsaw, 2013. Available online: <http://www.shroud.com/pdfs/jaworski.pdf> (accessed on 20 December 2018).
- Schwalbe, L.A.; Rogers, R.N. Physics and chemistry of the Shroud of Turin, a summary of the 1978 investigation. *Anal. Chim. Acta* **1982**, *135*, 3–49. [CrossRef]
- Damon, P.E.; Donahue, D.J.; Gore, B.H.; Hatheway, A.L.; Jull, A.J.T.; Linick, T.W.; Sercel, P.J.; Toolin, L.J.; Bronk, C.R.; Hall, E.T.; et al. Radiocarbon dating of the Shroud of Turin. *Nature* **1989**, *337*, 611–615. [CrossRef]

13. Fanti, G. Why Is the Turin Shroud Authentic. *Glob. J. Arch. Anthropol.* **2018**, *7*. [CrossRef]
14. Fanti, G.; Schwartz, B.; Accetta, A.; Botella, J.A.; Buenaobra, B.J.; Carreira, M.; Cheng, F.; Crosilla, F.; Dinegar, R.; Felzmann, H.; et al. Evidences for Testing Hypotheses about the Body Image Formation of the Turin Shroud. In Proceedings of the Third Dallas International Conference on the Shroud of Turin, Dallas, TX, USA, 8–11 September 2005; Available online: <http://www.shroud.com/pdfs/doclist.pdf> (accessed on 20 December 2018).
15. Walsh, B. The 1988 Shroud of Turin Radiocarbon Tests Reconsidered. In Proceedings of the 1999 Shroud of Turin International Research Conference, Richmond, VA, USA, 18–20 June 1999; Walsh, B., Ed.; Magisterium Press: Glen Allen, VA, USA, 1999; pp. 326–342, ISBN 0-9706934-0-0.
16. Riani, M.; Atkinson, A.C.; Fanti, G.; Crosilla, F. Regression analysis with partially labeled regressors: Carbon dating of the Shroud of Turin. *J. Stat. Comput.* **2012**, *23*, 551–561. [CrossRef]
17. Wilson, I.; Miller, V. *The Mysterious Shroud*; Doubleday and Company: New York, NY, USA, 1986; ISBN 978-0385190749.
18. Gove, H.E.; Mattingly, S.J.; David, A.R.; Garza-Valdes, L.A. A problematic source of organic contamination of linen. *Nucl. Instrum. Methods Phys. Res. B* **1997**, *123*, 504–507. [CrossRef]
19. Fanti, G.; Baraldi, P.; Basso, R.; Tinti, A. Non-destructive dating of ancient flax textiles by means of vibrational spectroscopy. *Vib. Spectrosc.* **2013**, *67*, 61–70. [CrossRef]
20. Fanti, G.; Malfi, P.; Conca, M. *The Shroud of Turin—First century After Christ!* Pan Stanford Publishing Pte. Ltd.: Singapore, 2015; ISBN 978-9814800082.
21. Rogers, R. Studies on the radiocarbon sample from the Shroud of Turin. *Thermochim. Acta* **2005**, *425*, 189–194. [CrossRef]
22. Fanti, G. Hypotheses regarding the formation of the body image on the Turin Shroud. A critical compendium. *J. Imaging Sci. Technol.* **2011**, *55*. [CrossRef]
23. De Caro, L.; Giannini, C. Turin Shroud hands' region analysis reveals the scrotum and a part of the right thumb. *J. Cult. Herit.* **2017**, *24*, 140–146. [CrossRef]
24. Judica Cordiglia, G.B.; Private communication to the third author (2001); Judica Cordiglia, G.B.; Come si è proceduto alla ripresa fotografica della SS. Sindone in occasione della ricognizione privata del 18 giugno 1969. In *La S. Sindone. Ricerche e Studi Della Commissione di Esperti nominata dall'Arcivescovo di Torino, Card. Michele Pellegrino, nel 1969*; Rivista Diocesana Torinese (supplemento): Torino, Italy, 1976; pp. 93–101.
25. Enrie, G. *La Santa Sindone Rivelata Dalla Fotografia*; Società Editrice Internazionale: Torino, Italy, 1938.
26. Fanti, G.; Basso, R. MTF Resolution of Images Obtained without an Acquisition System. In Proceedings of the Shroud Science Group International Conference the Shroud of Turin: Perspectives on a Multifaceted Enigma, Columbus, OH, USA, 14–17 August 2008; Libreria Progetto: Padova, Italy, 2009; ISBN 987-88-96477-03-8.



© 2019 by the authors. Licensee MDPI, Basel, Switzerland. This article is an open access article distributed under the terms and conditions of the Creative Commons Attribution (CC BY) license (<http://creativecommons.org/licenses/by/4.0/>).