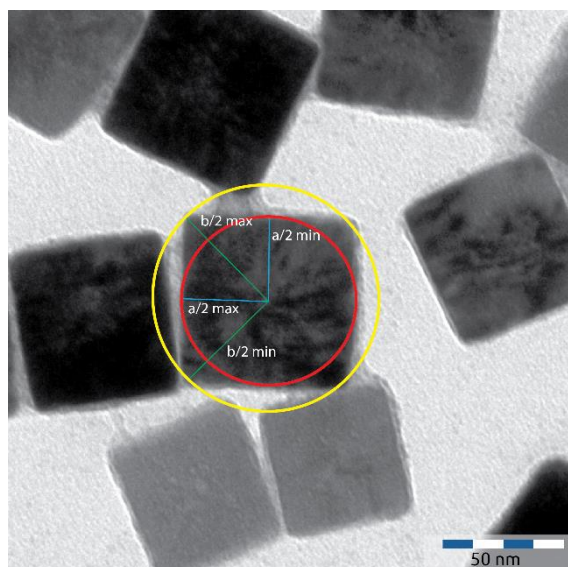
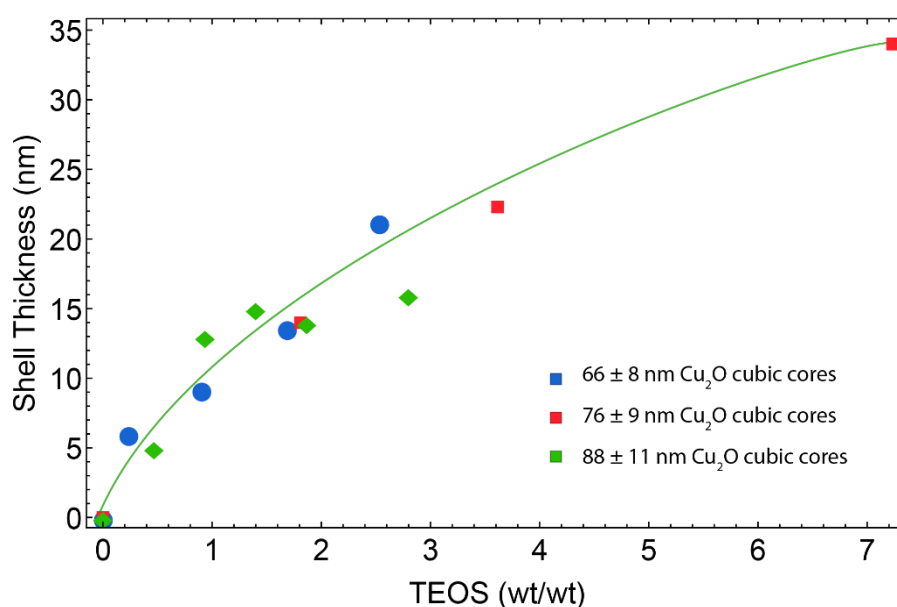


# Synthesis of Hollow Silica Nanocubes with Tuneable Size and Shape, Suitable for Light Scattering Studies

The following are available online, Figure S1: SFigure\_1MValueDet, Figure S2: SFigure\_2\_TEOSToThickness:



**Figure S1:** Illustration of the  $m$ -value determination: visualization of the method used to determine the aspect ratio of the cube. The yellow and red ovals are drawn on the particle to determine the diagonal and edge-length respectively. The  $m$ -value is calculated using equation 3.



**Figure S2:** The thickness of the silica shell of Cu<sub>2</sub>O@SiO<sub>2</sub> particles plotted against the amount of TEOS added with respect to the dry weight of the particles (gram/gram). The green curve is to guide the eye.