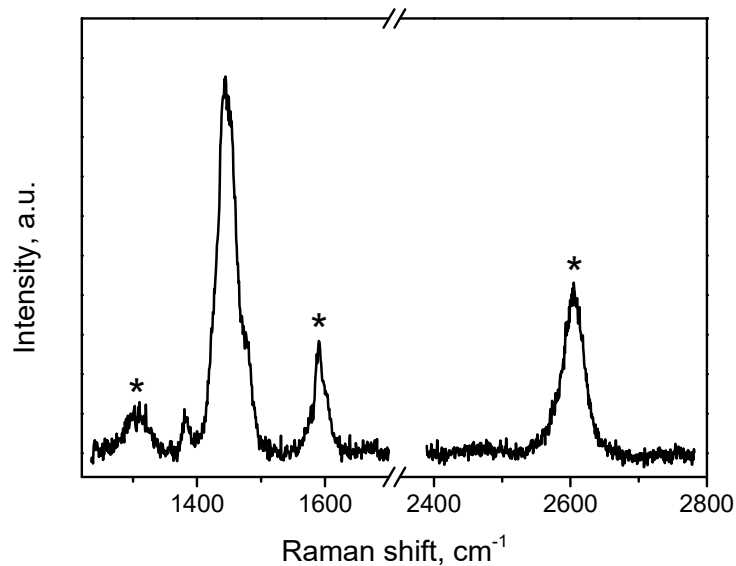


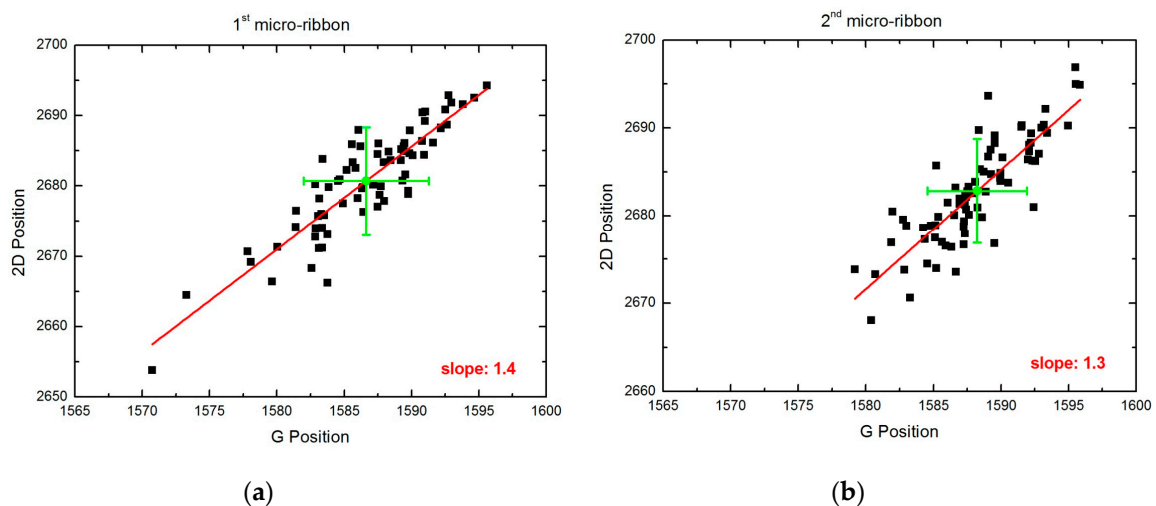
Supplementary Materials

# Production and Mechanical Characterization of Graphene Micro-Ribbons

Maria Giovanna Pastore Carbone, Georgia Tsoukleri, Anastasios C. Manikas, Eleni Makarona, Christos Tsamis and Costas Galiotis



**Figure S1.** Characteristic Raman spectrum of the embedded graphene micro-ribbon, collected using  $\lambda_{exc} = 785$  nm. Peaks indicated with an asterisk are characteristic of monolayer graphene.



**Figure S2.** Pos(2D) vs Pos(G) for two micro-ribbons (a,b). Data extracted from Raman mapping performed using  $\lambda_{exc} = 514$  nm.