

Supporting Information

Environmental Emissions from Chemical Etching Synthesis of Silicon Nanotube for Lithium Ion Battery Applications

Lulu Ma ¹, Dongsheng Guan ¹, Fenfen Wang ² and Chris Yuan ^{1, 2*}

¹ Department of Mechanical Engineering, University of Wisconsin-Milwaukee, Milwaukee, WI 53211, USA; hallo.lulu@hotmail.com (L.M.); guands1@gmail.com (D.G.)

² Department of Mechanical and Aerospace Engineering, Case Western Reserve University, Cleveland, OH 44106, USA; fxw127@case.edu

* Correspondence: chris.yuan@case.edu; Tel.: +1-216-368-5191

Figure S1 is the SEM image of Si wafer after step #1. In step #1, Si wafers (100) are immersed into 5 mM AgNO₃ and 5 M HF for 60 s to deposit Ag on the surface. After deposition, rough surface with curves and dots are observed.

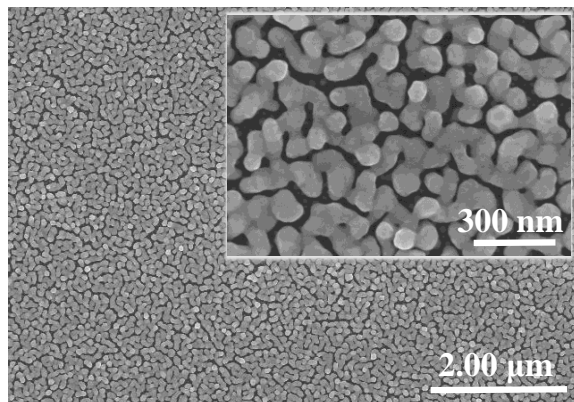


Figure S1. SEM image of deposited Ag after step #1.