

Supplementary Material. Ichthyopathological maps of bacterial infestation in Romanian Black Sea turbot.

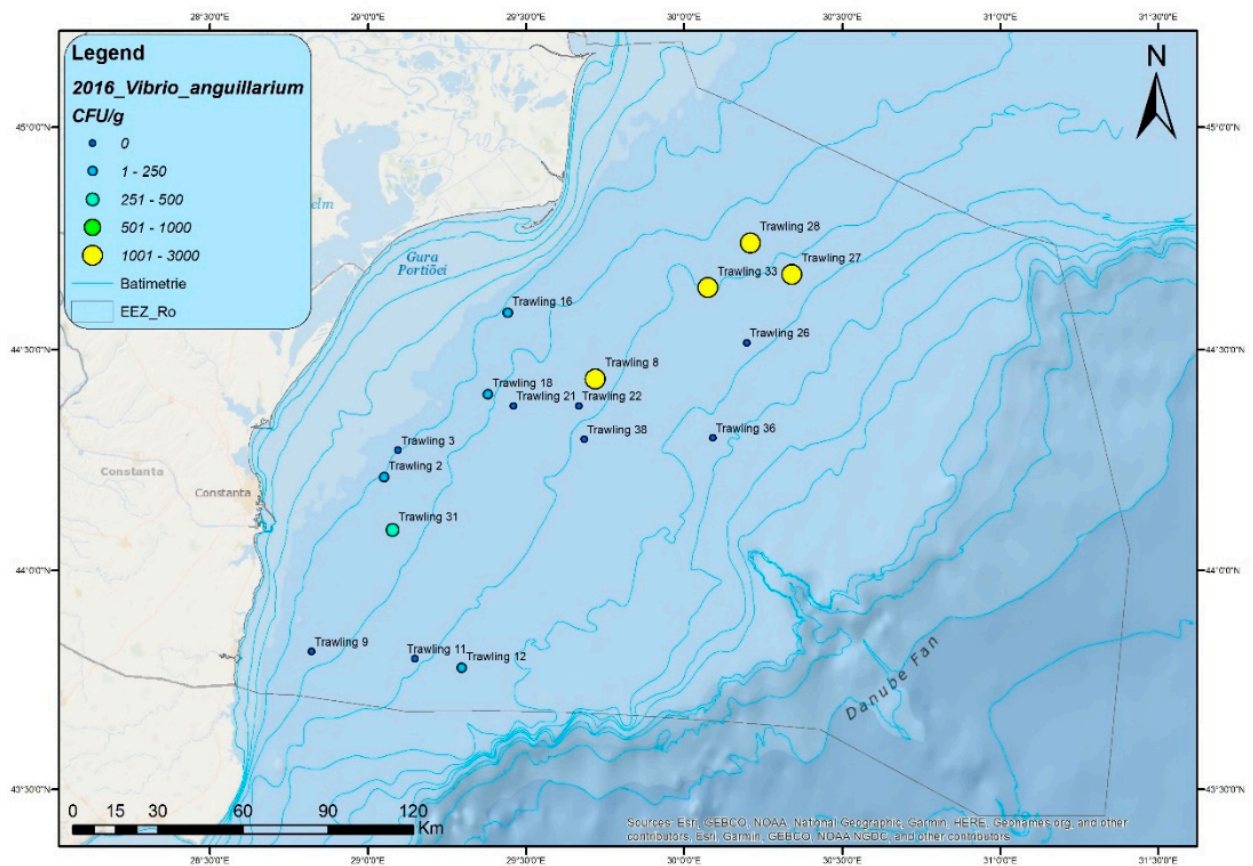
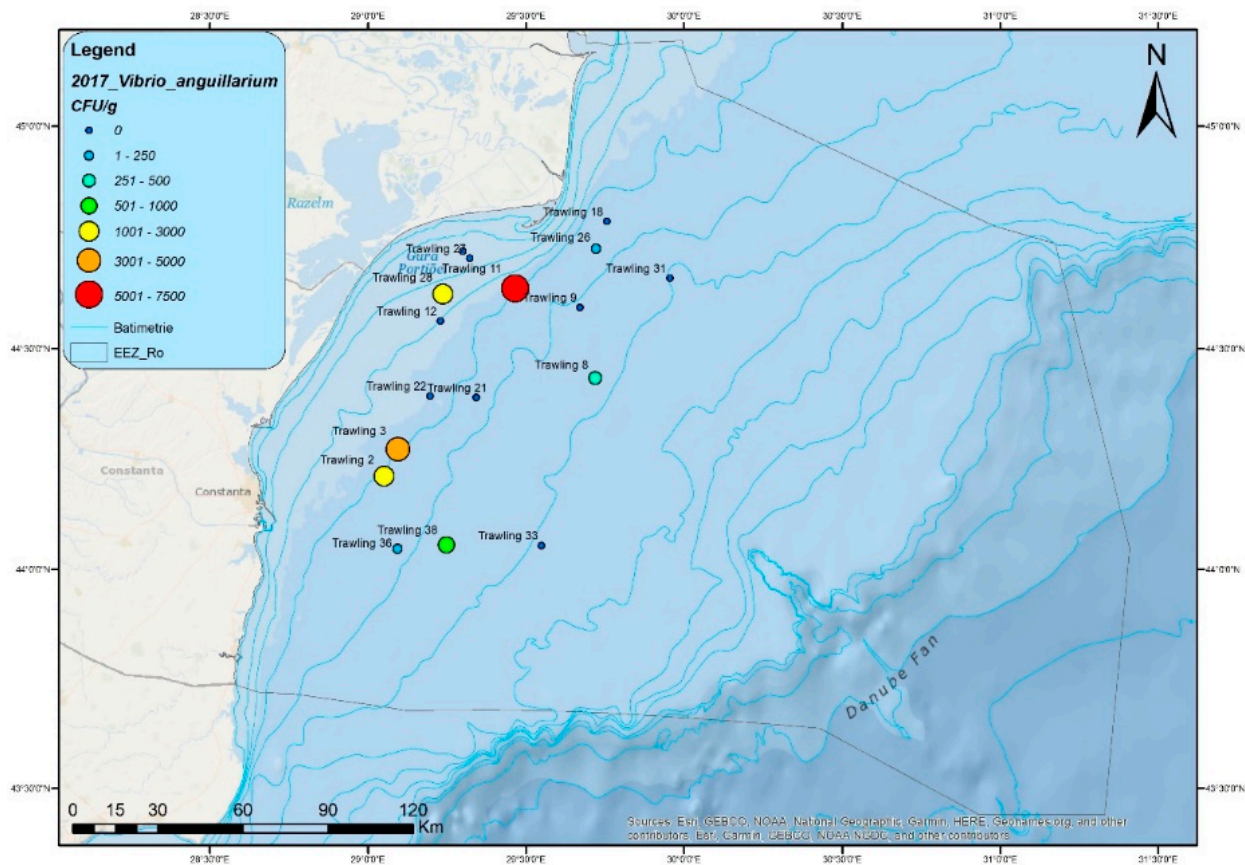
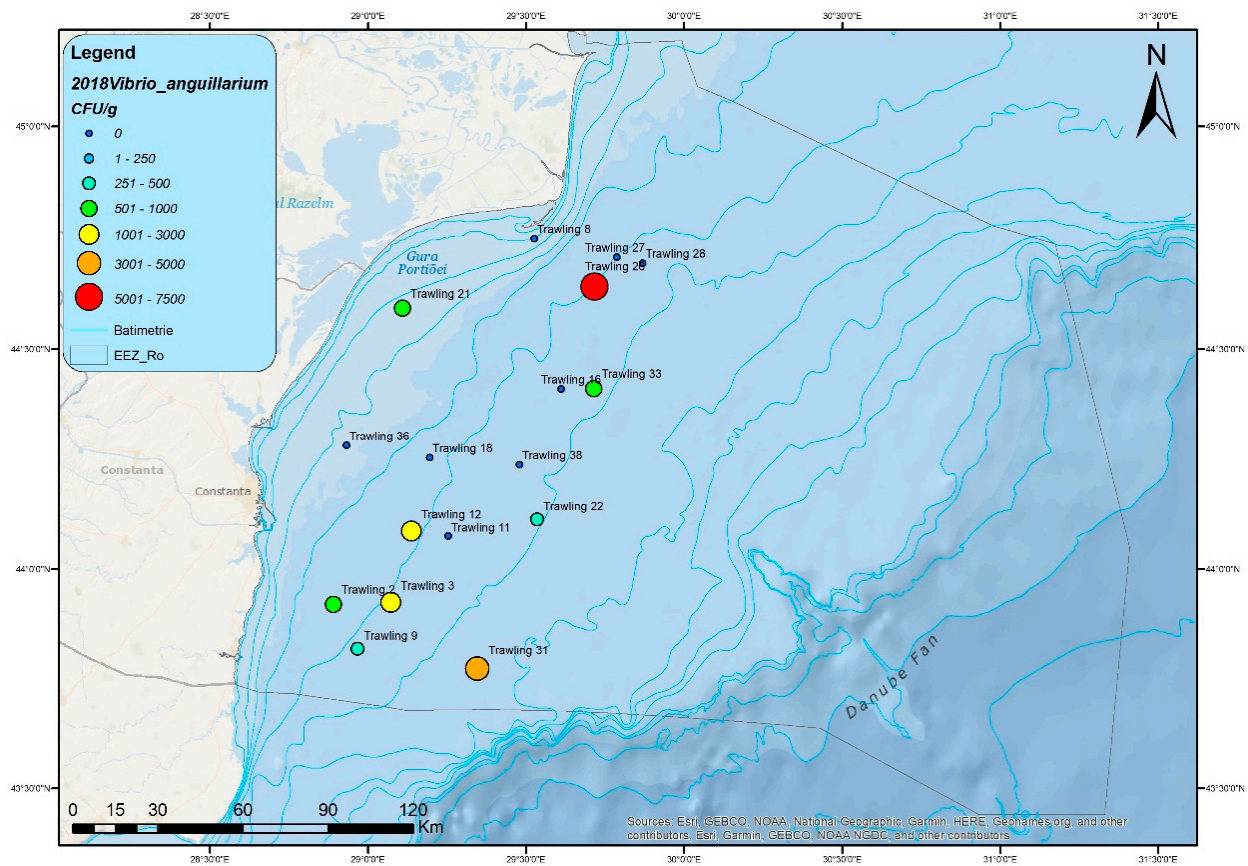


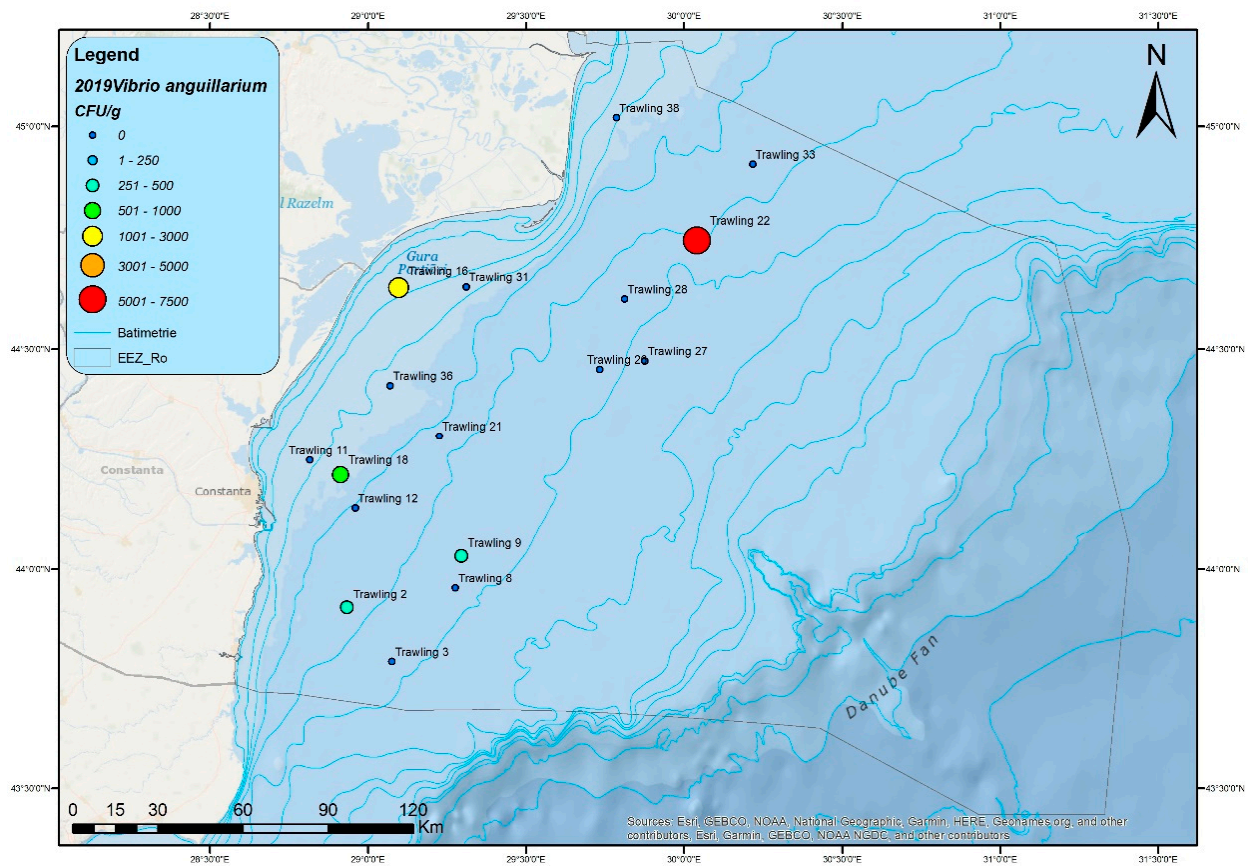
Figure S1. Number of *V. anguillarum* colonies (CFU/g) in 2016



**Figure S2.** Number of *V. anguillarum* colonies (CFU/g) in 2017



**Figure S3.** Number of *V. anguillarum* colonies (CFU/g) in 2018



**Figure S4.** Number of *V. anguillarum* colonies (CFU/g) in 2019



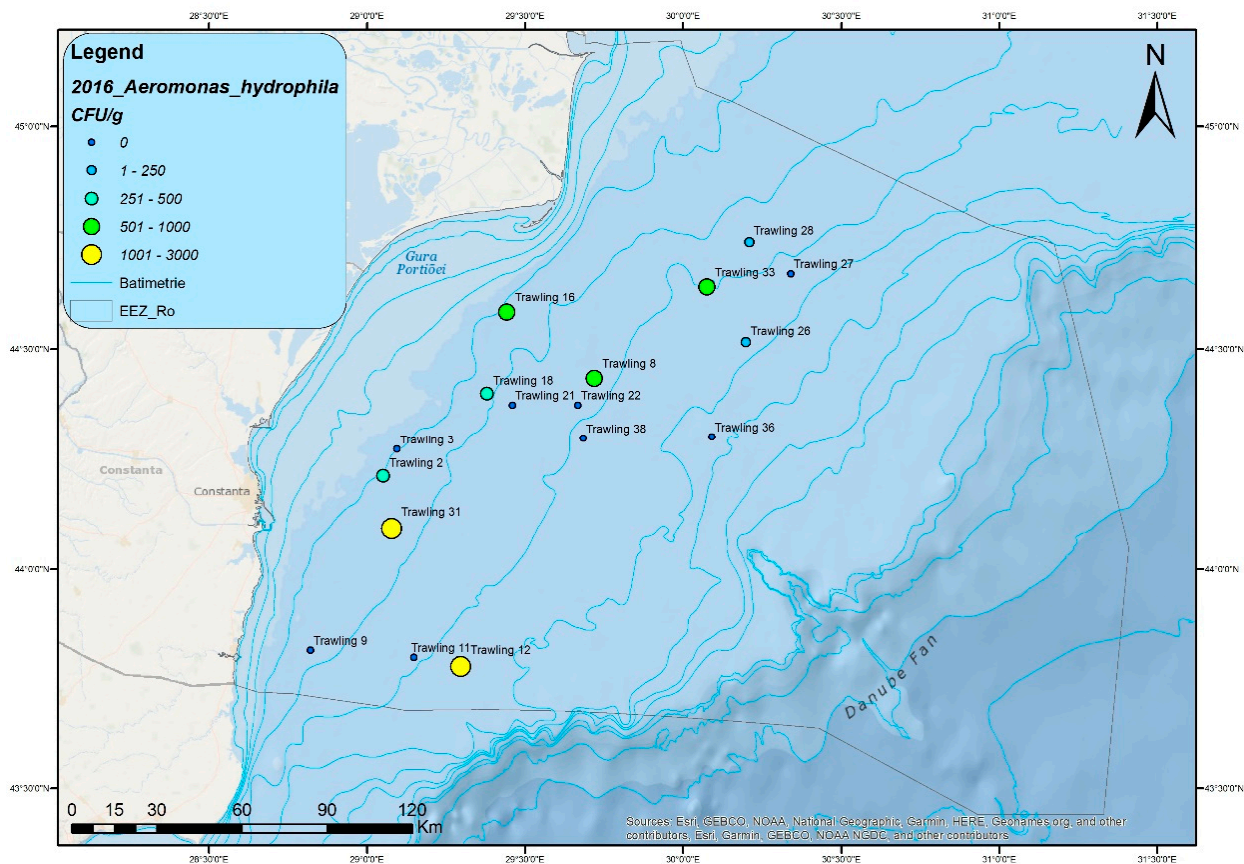
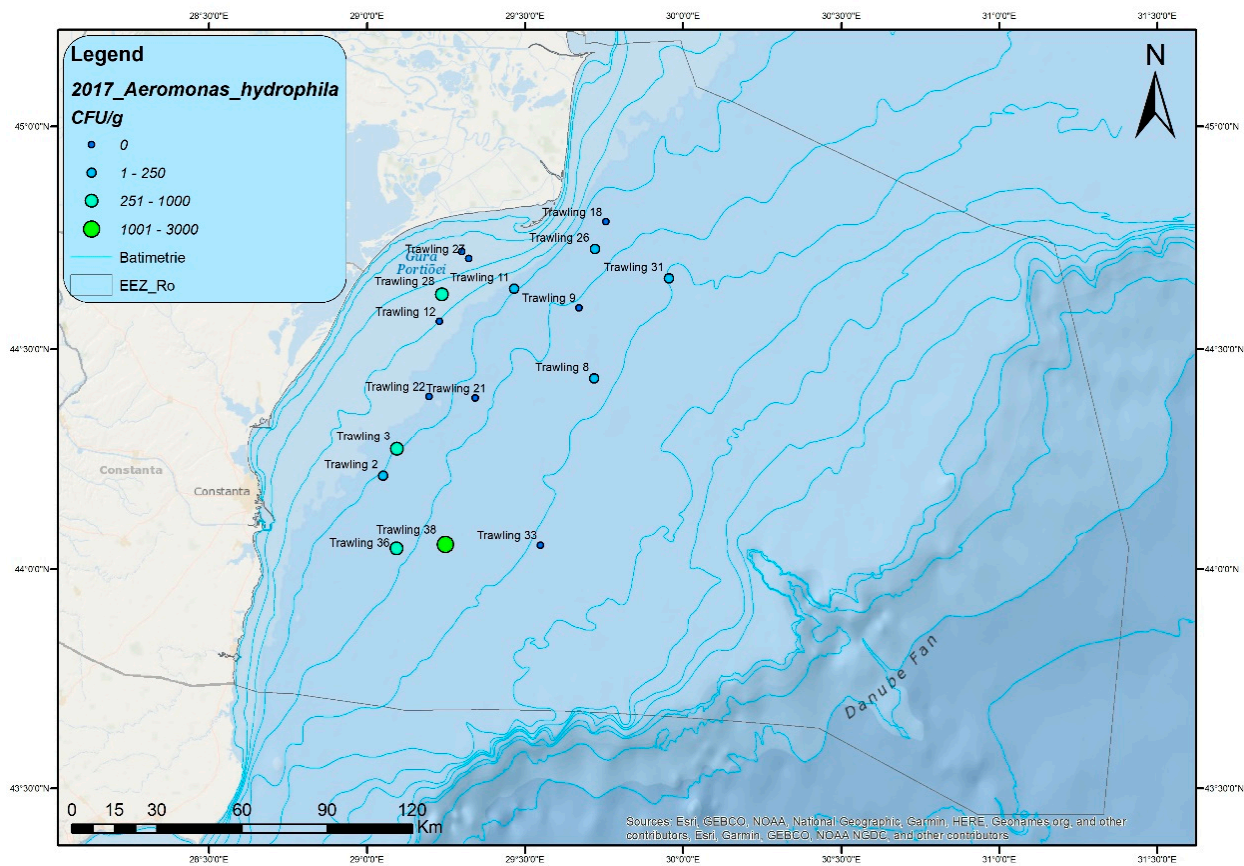
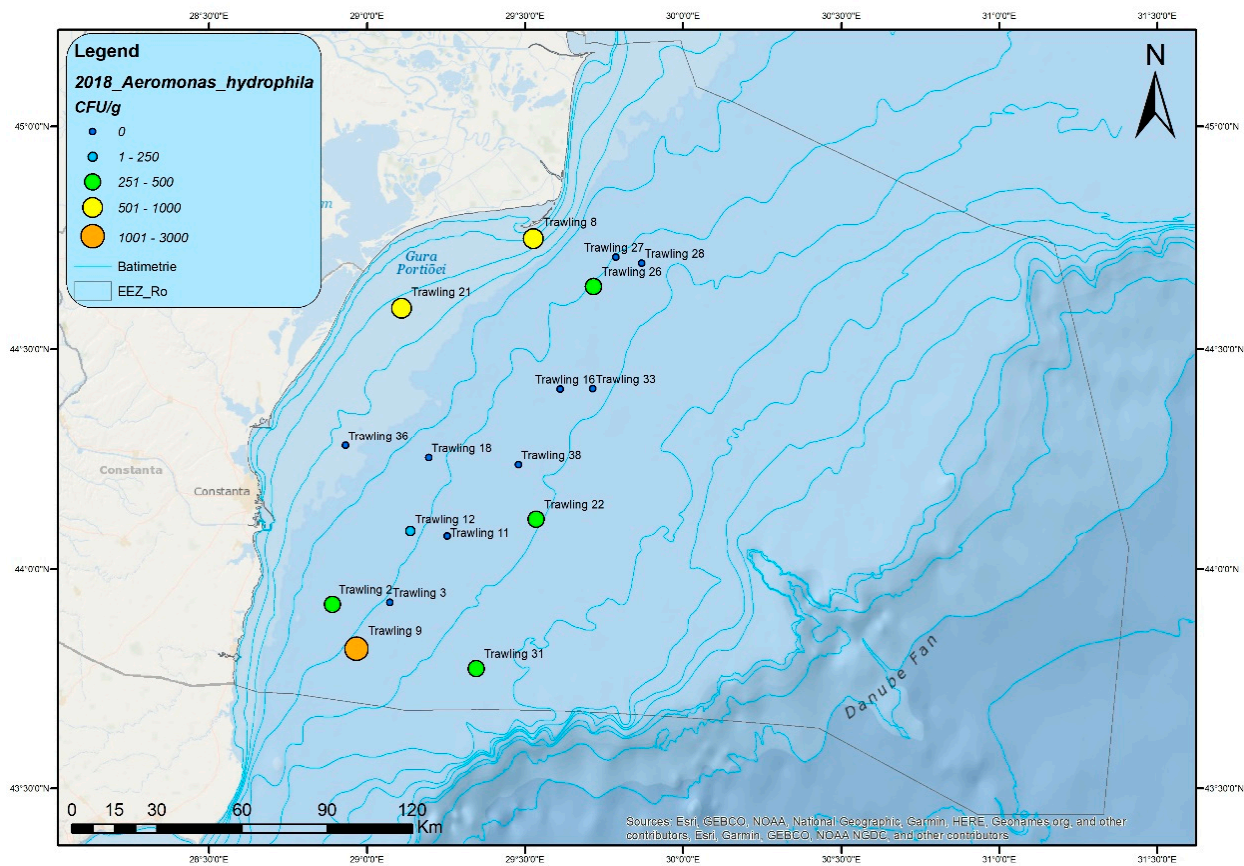


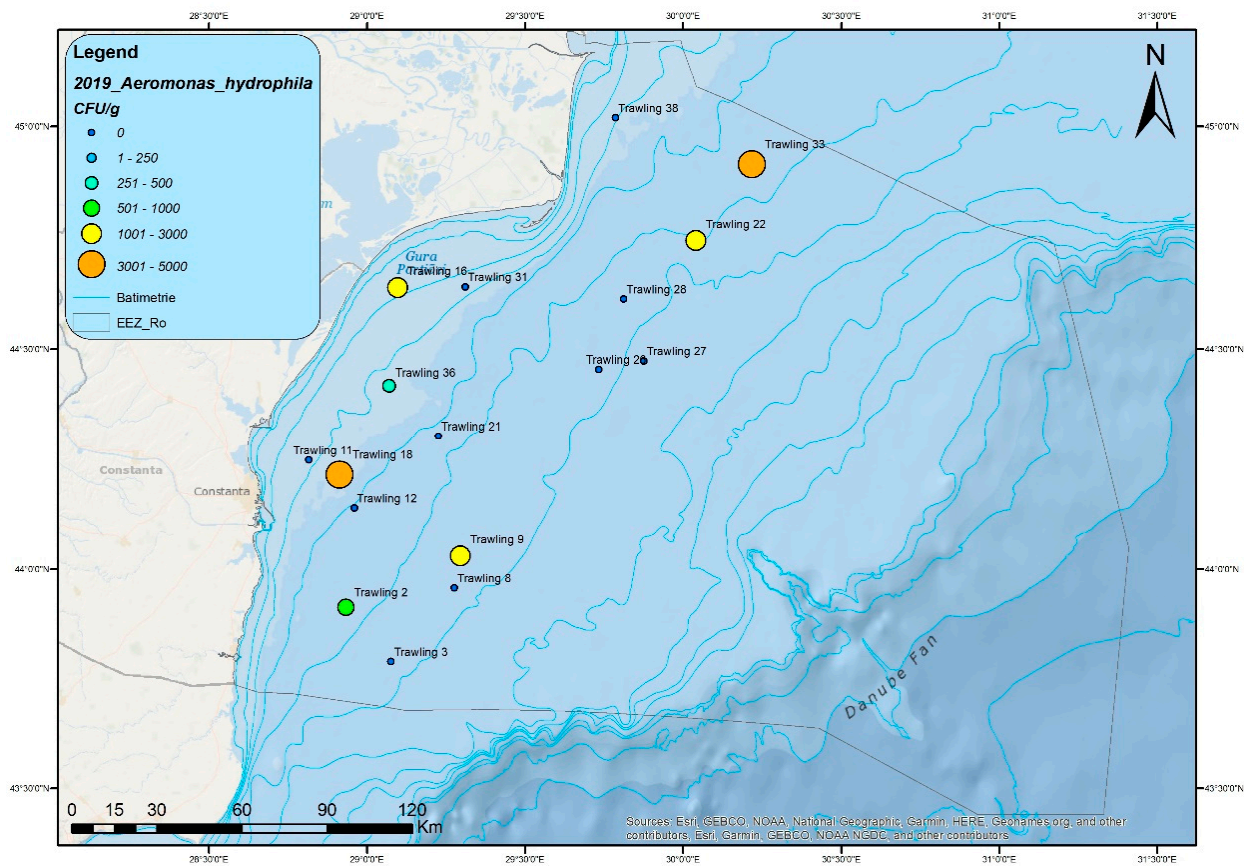
Figure S5. Number of *A. hydrophila* colonies (CFU/g) in 2016



**Figure S6.** Number of *A. hydrophila* colonies (CFU/g) in 2017

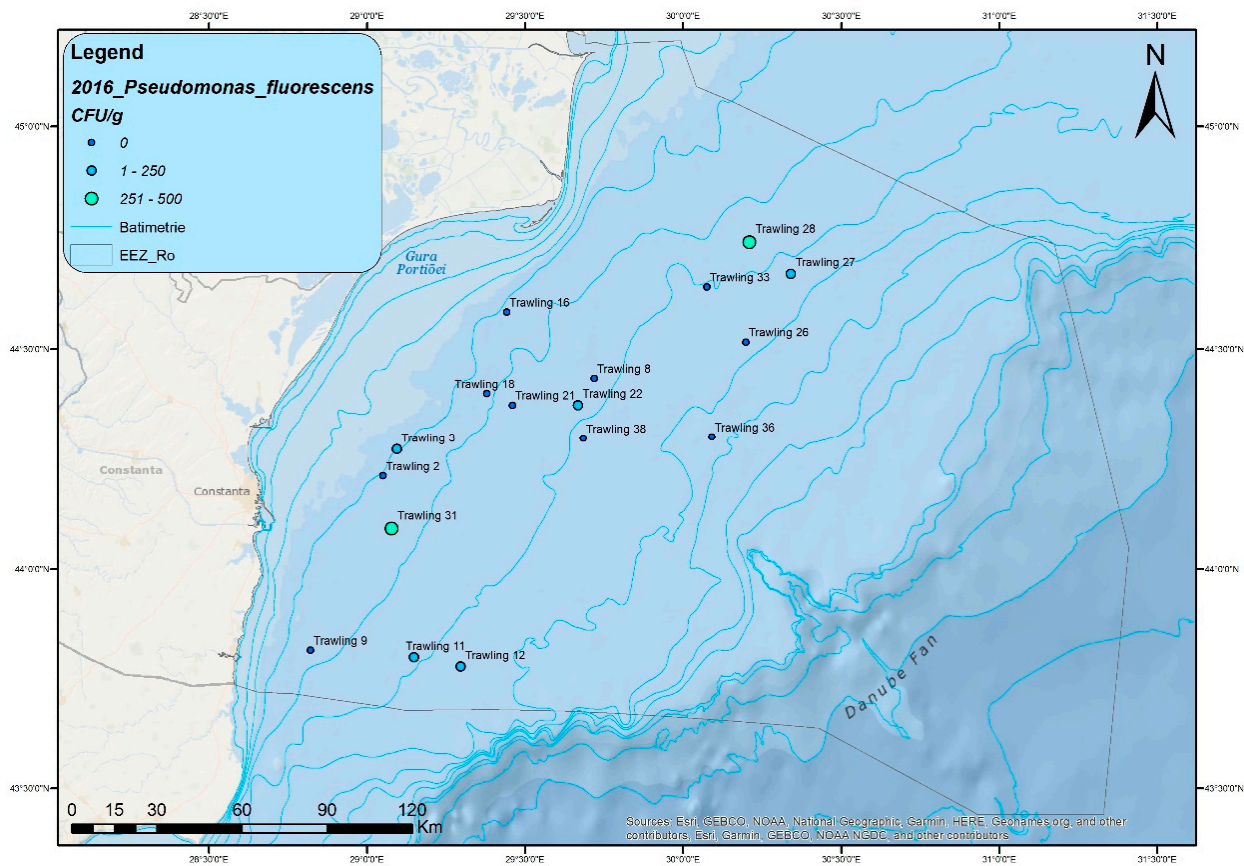


**Figure S7.** Number of *A. hydrophila* colonies (CFU/g) in 2018

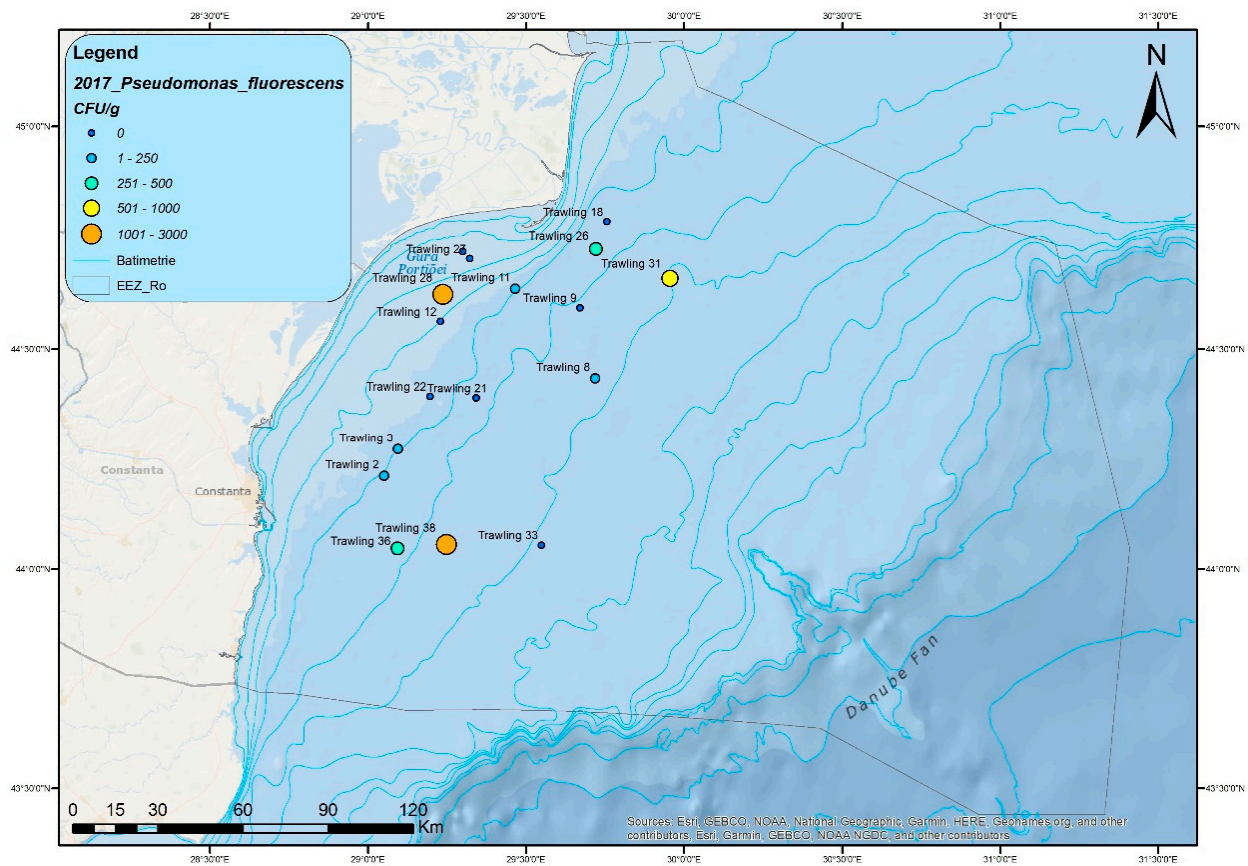


**Figure S8.** Number of *A. hydrophila* colonies (CFU/g) in 2019

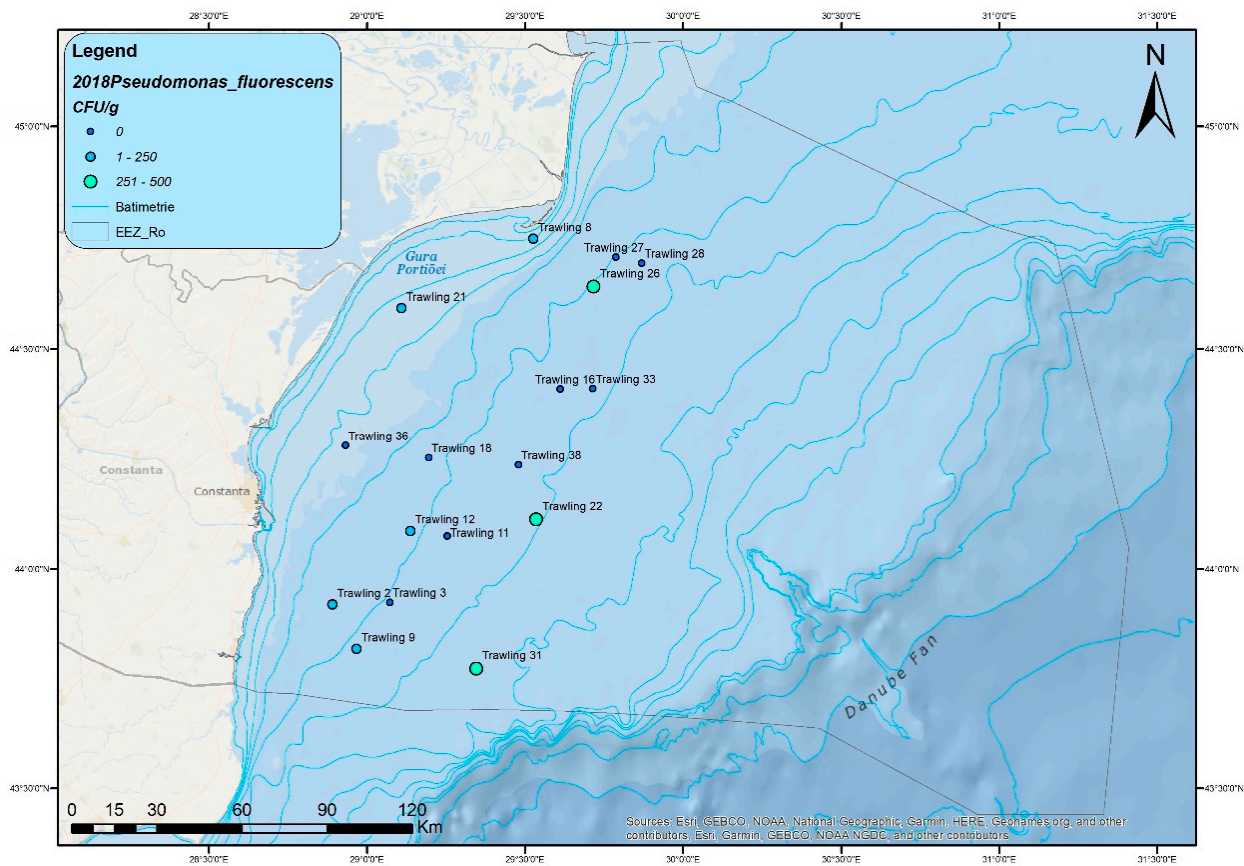




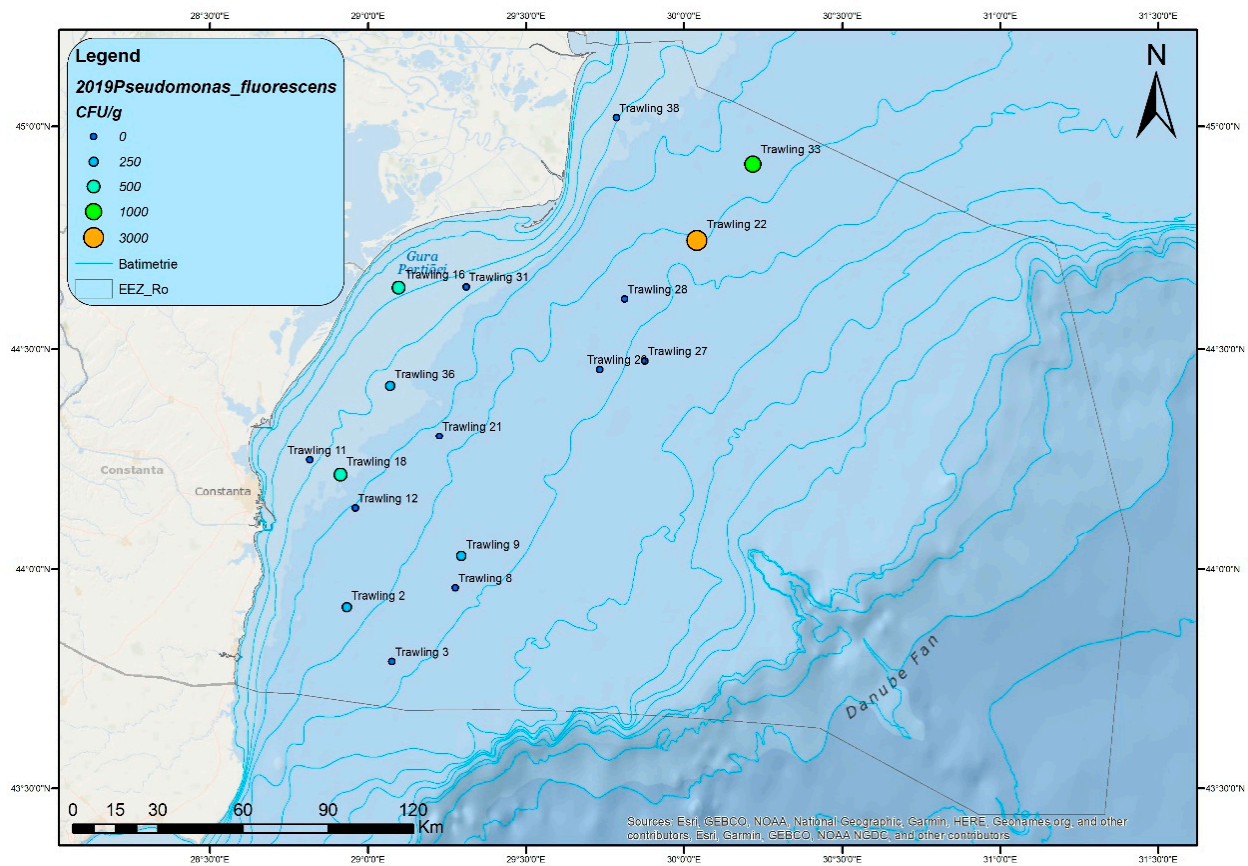
**Figure S9.** Number of *P. fluorescens* colonies (CFU/g) in 2016



**Figure S10.** Number of *P. fluorescens* colonies (CFU/g) in 2017



**Figure S11.** Number of *P. fluorescens* colonies (CFU/g) in 2018



**Figure S12.** Number of *P. fluorescens* colonies (CFU/g) in 2019