

# The Early Immune Response of Lymphoid and Myeloid Head-Kidney Cells of Rainbow Trout (*Oncorhynchus mykiss*) Stimulated with *Aeromonas salmonicida*

Fabio Sarais <sup>1,\*</sup>, Ruth Montero <sup>2</sup>, Sven Ostermann <sup>2</sup>, Alexander Rebl <sup>1</sup>, Bernd Köllner <sup>2</sup> and Tom Goldammer <sup>1,3,\*</sup>

<sup>1</sup> Research Institute for Farm Animal Biology (FBN), Institute of Genome Biology, 18196 Dummerstorf, Germany; rebl@fhn-dummerstorf.de

<sup>2</sup> Friedrich-Loeffler-Institut (FLI), Federal Research Institute for Animal Health, Institute of Immunology, 17493 Greifswald, Germany; ruth.montero.m@gmail.com (R.M.); Sven.Ostermann@fli.de (S.O.); Bernd.Koellner@fli.de (B.K.)

<sup>3</sup> Faculty of Agriculture and Environmental Sciences, University of Rostock, 18057 Rostock, Germany

\* Correspondence: sarais@fhn-dummerstorf.de (F.S.); tomgoldammer@fhn-dummerstorf.de (T.G.)

**Abstract:** The teleost head kidney is a highly relevant immune organ, and myeloid cells play a major role in this organ's innate and adaptive immune responses. Because of their complexity, the early phases of the innate immune reaction of fish against bacteria are still poorly understood. In this study, naïve rainbow trout were stimulated with inactivated *A. salmonicida* and sampled at 12 h, 24 h and 7 d poststimulation. Cells from the head kidney were magnetically sorted with a monoclonal antibody mAb21 to obtain one (MAb21-positive) fraction enriched with myeloid cells and one (MAb21-negative) fraction enriched with lymphocytes and thrombocytes. The gene expression pattern of the resulting cell subpopulations was analysed using a panel of 43 immune-related genes. The results show an overall downregulation of the complement pathway and cytokine production at the considered time points. Some of the selected genes may be considered as parameters for diagnosing bacterial furunculosis of rainbow trout.

**Keywords:** *Aeromonas*; NF- $\kappa$ B; myeloid; inflammatory; innate immune response; rainbow trout

**Citation:** Sarais, F.; Montero, R.; Ostermann, S.; Rebl, A.; Köllner, B.; Goldammer, T. The Early Immune Response of Lymphoid and Myeloid Head-Kidney Cells of Rainbow Trout (*Oncorhynchus mykiss*) Stimulated with *Aeromonas salmonicida*. *Fishes* **2022**, *7*, 12. <https://doi.org/10.3390/fishes7010012>

Academic Editor: Maria Angeles Esteban

Received: 15 November 2021

Accepted: 5 January 2022

Published: 7 January 2022

**Publisher's Note:** MDPI stays neutral with regard to jurisdictional claims in published maps and institutional affiliations.



**Copyright:** © 2022 by the authors. Licensee MDPI, Basel, Switzerland. This article is an open access article distributed under the terms and conditions of the Creative Commons Attribution (CC BY) license (<https://creativecommons.org/licenses/by/4.0/>).

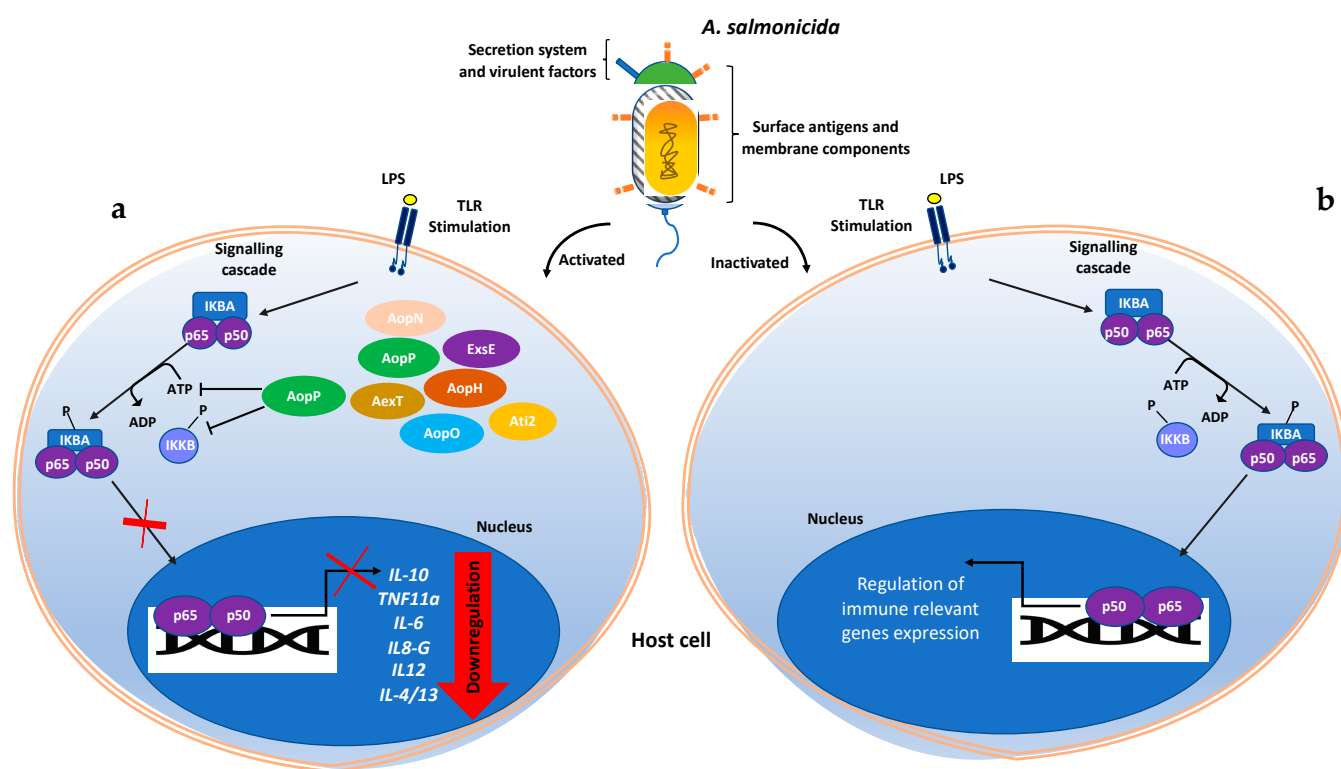
## 1. Introduction

Aquaculture is the fastest-growing food production sector, accounting for about half of all food fish consumed globally [1]. Disease outbreaks have been a massive stumbling block to the growth of the aquaculture industry and have severely impacted the industry's economic expansion in many countries [2]. To prevent pathogenic outbreaks and ensure economic success, fish health management aims for achieving optimum conditions in aquaculture [1]. Although prophylactic methods are currently applied, bacterial, viral and parasitic diseases still occur [3]. Therefore, greater knowledge of the molecular host–pathogen interactions over the course of an infection is critical for developing molecular tools and effective vaccines to prevent and reduce losses because of disease outbreaks.

The fish innate immune system comprises mucosal barriers, several unspecific pathogen-resistance components (pattern recognition receptors, enzymes, complement components, etc.) and cells (monocytes/macrophages, dendritic cells, granulocytes) [4,5]. Upon intraperitoneal (i.p.) stimulation, the innate defence is immediately activated, and myeloid cells, including monocytes/macrophages and granulocytes, are attracted to the peritoneum. Subsequently, lymphoid cells, including B-, T- and NK cells, are activated, which are part of the adaptive immune system. The induction of adaptive immunity involves time-consuming processes, such as cell proliferation, cell differentiation and cell mobilisation [6].

Despite these defence mechanisms, bacteria such as *Aeromonas salmonicida* ssp. *salmonicida*, which is the causative agent of furunculosis, can still invade fish. This Gram-negative bacterium causes haemorrhagic and necrotic lesions in the gills, gut and muscle that are highly lethal [7,8]. A closer examination of the virulence factors of *A. salmonicida* shows a type III secretion system (T3SS). This is a syringe needle-shaped protein complex responsible for the transfer of toxins from the bacterial cytoplasm to the cytoplasm of the host cell. The T3SS effector proteins AexT, AopH, Ati2, AopP, AopO, AopN and ExsE modulate the host's immune response by interfering with those inflammatory responses initiated by MAP kinases or NF- $\kappa$ B proteins [9–12] (Figure 1). The ability of macrophages to trigger inflammation and interact with other immune cells is significantly reduced when pathogens block the NF- $\kappa$ B signalling pathways [13].

Certain aspects of the early immune response to *A. salmonicida* of teleostean cells of myeloid origin remain unclear, for example, their expression profiles and their kinetics during the first 24 h poststimulation (p.s.) with the bacteria. To provide a better understanding of the early immune response to *A. salmonicida* in rainbow trout (*Oncorhynchus mykiss*), we investigated two leukocyte fractions from the head kidney at different time points after stimulation with *A. salmonicida*. To this end, we used a panel of 43 genes representing the most common markers for dendritic cells, macrophages, lymphocytes, thrombocytes, complement components and anti- and proinflammatory factors.



**Figure 1.** Graphic representation of (a) an infection with activated and (b) stimulation with inactivated *Aeromonas salmonicida* bacteria. In both scenarios, *A. salmonicida* activates the TLR-NF- $\kappa$ B pathway. (a) Previous investigations have documented the intracellular effects of AexT, Ati2 and AopP on inflammatory gene expression, whereas the impact of AopH, AopO and AopS has been predicted based on cytotoxic homologs from other bacterial species. (b) Stimulations with inactive bacteria do not contain an active T3SS system; the host cell response is directed against molecular antigens and induces immune-relevant gene expression. Abbreviations: LPS, lipopolysaccharide; TLR, toll-like receptor; ATP, adenosine triphosphate; ADP, adenosine diphosphate.

## 2. Materials and Methods

### 2.1. Ethics Statement

The experiment was approved by the State Office for Agriculture, Food Safety and Fisheries (approval number LALLF 7221.3-2-042/17), according to the German and European guidelines on animal welfare (Tierschutzgesetz, Tierschutz-Versuchstierverordnung, Directive 2010/63/EU).

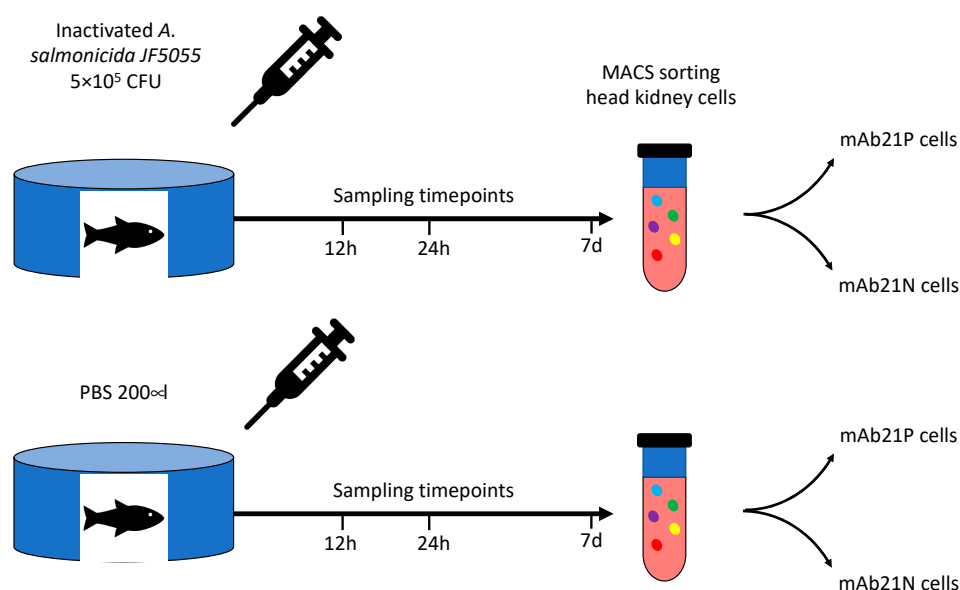
### 2.2. *A. salmonicida* for Stimulation Experiments

An aliquot of *A. salmonicida* ssp. *salmonicida* (A.s.s.)—the highly virulent strain JF 5505—from stock cryo-preserved batches was cultivated on tryptic soy broth media (TSB, Becton Dickinson, Heidelberg, Germany) at 15 °C for 24 h. Bacterial suspension was inactivated in 1.5% paraformaldehyde (PFA) for 1.5 h at 4 °C, and afterwards, a sample was plated out on TSB agar plates to prove successful inactivation. The inactivated A.s.s. bacteria were washed twice with TSB media by centrifugation at 4000× g for 10 min at 4 °C. The pellet was resuspended in TSB 25% glycerol at a concentration of  $1.5 \times 10^8$  bacteria/mL. For intraperitoneal immunisation, the bacteria were washed once with phosphate-buffered saline (PBS) and set to a concentration of  $1 \times 10^7$  bacteria/mL. Injections were prepared under aseptic conditions in sterile 1× PBS.

### 2.3. Fish

The Born strain of rainbow trout (*O. mykiss*) weighing 20 g to 100 g was purchased without gender selection from the commercial trout breeding farm Forellenzucht Uthoff GmbH, Neubrandenburg (Germany). The fish were kept in 300 L glass aquaria in a partially recirculating water system at a constant 12 °C and 12 h light:12 h dark period for both the summer and winter experiments. They were fed twice per day with commercial dry food pellets (Aminoforte, Kronen-Fisch, Wesel, Germany). A total of 24 trout were used for the experiments. All manipulations of the fish were done after anaesthesia with benzocaine. The fish received a single i.p. injection containing 100 µL of  $1 \times 10^7$  bacteria/mL.

The highly virulent strain JF5505 of the inactivated *A. salmonicida* ssp. *salmonicida* was diluted in 200 µL PBS, and  $5 \times 10^5$  CFU were i.p. injected using a 20 G needle. During this stimulation trial, the fish weighed between 30 g and 50 g. The control fish were injected with 200 µL of PBS. At 12 h, 24 h, and 7 d poststimulation, four fish per treatment group were euthanised using an overdose of benzocaine (100 mg/L, Sigma, Steinheim, Germany) (Figure 2) and sampled.



**Figure 2.** Overview of the exposure conditions, subsequent sampling at specific time points and magnetic separation with a monoclonal antibody (MAb21) against a myeloid lineage marker to separate a MAb21-positive (MAb21P) fraction of myeloid cells from a depleted MAb21-negative (MAb21N) cell fraction enriched in lymphocytes and thrombocytes.

#### 2.4. Sorting of Head Kidney Cells

Pooled suspensions of viable leukocytes from the head kidney of four fish per treatment were prepared, as described previously [13]. Afterwards,  $1 \times 10^6$  cells were incubated with the monoclonal antibody 21 (MAb21, previously validated as specifically recognising a lineage marker on all cells from myeloid lineage) for 30 min at 4 °C. Then, the cells were washed with 700 µL of MACS Buffer (Miltenyi Biotec, Bergisch Gladbach, Germany) and sedimented by centrifugation for 5 min at  $300 \times g$  at 4 °C. The cell pellet was resuspended in 200 µL of antimouse IgG magnetic beads (Miltenyi Biotec, Germany) following the manufacturer's recommendations.

After a final washing step with 700 µL of MACS buffer (as described above), the cells were resuspended in 500 µL of MACS buffer (Miltenyi Biotec, Germany). For magnetic separation in the autoMACS Proseparator (Miltenyi Biotec, Germany), the Possel\_S programme was used. The resulting enriched cell fraction (MAb21P, myeloid cells) and depleted cell fraction (MAb21N, lymphocyte and thrombocytes enriched) were centrifuged, and the pellets were resuspended in 350 µL of lysis buffer RLT (Qiagen, Hilden, Germany) for further RNA extraction and gene expression analysis.

#### 2.5. Primer Design and Biomark qPCR Measurements

The qPCR oligonucleotide primers (Table 1) were designed using pyrosequencing assay design software (v.1.0.6; Biotage, Uppsala, Sweden). All the analysed genes were selected based on previous publications on teleosts. Each primer pair was tested prior to RT-qPCR measurements in a standard PCR reaction using the HotStar-Taq (Qiagen, Germany) following a standard protocol. The resulting PCR products were visualised on agarose gels to assess product size and quality. Subsequently, primer pairs were tested in a quantitative PCR analysis using the LightCycler-96 system (Roche, Mannheim, Germany).

**Table 1.** Primers used in the study, amplicon length and function of each analysed gene. The left column reports the specific cell population.

Cell Population	Gene Symbol	Primer 5'–3'	Length (bp)	Accession No.	Function	Ref.
Dendritic cells	TAP1	CACTCCTGGCAGGGGCTACTT CCTTATTTCATACGCTTTGGAGC	176	XM_021559784	Antigen presentation	[14]
	TAP2	CATCTGTGAGACGTTTATCCCTT TCATGTACGCCATTGGAGGCAT	99	XM_024386707	Antigen presentation	[15]
	CD83	GTCTGCATTCTAGCTGCCTACT ACGTAAGCCTGGGGTCCAGTA	128	XM_021593617	Immune cell interactions	[16]
	CD209	ATCTCTCAGGTACCGGAAGAGT GACTGTCTGGAGAGAGGAGCA	127	HG428763	Intercellular adhesion, antigen uptake	[17]
Macrophages	LYG	GCAGGTTGACAAGCGCTACCA AAAGGGGAATTTCAGCCTACA	118	BT073825	Hydrolyzation of the bacterial cell wall	[18]
	DAA (MHCII)	CAGTGATTCAGATGGAGTGAAT AT AGATTCCTTCCCTGGATATTAT G	131	FR688130	Cell surface proteins with a key role in adaptive immunity	[19]
	CD80/86	GCGTCGGCTGCTTCGAAGGT AGACTCCCAAACCACTGTATG	152	NM_001160477	Co-stimulation of T-cells	[20]

B- and T-cells	<i>CD68</i>	GACACTGGAAAGACAGGAGTAT T TTCAAGGAGGGCTTCATCACCT	115	XM_021578316	Scavenger receptor and antigen processor	[21]
	<i>SPIC</i>	CACCTGGTCCTGCATCAGAAG CTGGGACTATCACGCCACTCA	127	NM_001124513	Immune gene expression	[22]
	<i>CD79B</i>	TGAACCTCTCAGTGGCTTTAAAC TCTGTGTGGTGTCCGACCGAA	111	XM_021565350	Signalling through B-cell receptors	[23]
	<i>PAX5</i>	AAGTATCCGTCCCGGGGTGAT GACTATTGGCTGAGAGAGTGTG	144	NM_001124682	Development of lymphoid progenitors	[24]
	<i>TARP</i>	GAGAAGTGGAGTGGGACCAGA AGGTGAGTGACGGGGGACAC	105	XM_021619909	Antigen presentation	[25]
Pan-T-cells and Thrombocytes	<i>GAPDH</i>	TCAACGGATTITGGCCGTATTGG GTTCAAGTATGACTCCACCCAC	134	NM_001124246	Influence cytokine production	[26]
	<i>CS</i>	CACCTTCAACGAGGTTTACCCC GAGATGTGCTTTTGGATCTTGTC	131	XM_021610150	Metabolic regulator	[27]
	<i>CD18</i>	AGTGAGTTGAGGGTTACATAGG A GTATGTTCCAAAACAGTGATCAA C	148	XM_021579244	Leukocyte migration and adhesion	[28]
	<i>CD41</i>	CAGTTTAGCAACAAAACCATCA GT TGACACAAAAGGTGATGAGGTT TA	161	XM_021624569	Leukocyte migration and adhesion	[29]
	<i>CD36</i>	GACTGTTACAAAGGAATCGGTC AT ACAGTTCTGGCTCTTGACGTG	112	XM_021577070	Ligand binding	[30]
Natural Killer cells	<i>GZMB</i>	TCCTTTCCTCTGCTGGAGCCT TATATGGTCTCTCTGCAACACAG	94	XM_021598076	Destruction of infected and/or transformed cells	[31]
	<i>PRF1</i>	GCGGGTATTACAGCTATCGAGTA ATTACATTACCAAGGTGAGCCTG	161	XM_021558434	Destruction of infected and/or transformed cells	[32]
	<i>KLRD1 (CD94)</i>	TGGGGCAACGATCGGCTCAAA GAATCCTGCCACAGCAGTGGA	114	XM_021559366	“Missing-self” discrimination	[33]
Complement system	<i>CFD</i>	GACAAGTCATGAGCCCCAAG GTGCCGAAAGTGGGTATTGT	151	NM_001246346	Serine protease activity of the alternative complement pathway	[34]
	<i>CFH</i>	GCTGGACCAAGACACTTGGC CCTCTACCGGGGGTTGGTG	166	NM_001124410	Complement regulation	[34]
	<i>CFI</i>	ACCCAGTGTTTGCAAGAGAACC CAGTTGGCGATCAGAGAGACG	167	XM_021593383	Inactivation of C3b/C4b factors	[34]
	<i>C3-1</i>	AGCCTCTGACCAGGGAGATATT GACGATGTCAGGGAGTTGAAC	164	L24433	Opsonisation, elimination of pathogens	[34]
	<i>C1r/s</i>	AACCAGAGGGGACTCTGTCCA TGGACAGAGTCCCCTCTGGTT	182	NM_001124380	Initiation of classical complement pathway	[35]
Immune regulation	<i>NFKBIA</i>	AACCTGGAGGAAAACAGTGAC GAACAATCAGAGACAGACGGCG	153	NM_001124368	Inhibition of NF-κB pathways	[36]
	<i>SERPINB1</i>	TACCAGTTCGTTGAGACGTTCC ATCAAGAACCTATTGGCGGAGG	116	NM_001124515	Reduction of tissue damage; cell differentiation; immune activation	[37]
	<i>SERPING1</i>	AAGGAATGACGAACGGCAAACG TCAGCTGTCTCACAGTAGTACAT GATTGAGTGGGCAAAGTATTGTA	169	NM_001124379	Activation of the C1 complex	[37]
	<i>CD59</i>	T CATACCCTGTTACATAACATTGC T	167	XM_021606996	Inhibition of the membrane-attack complex	[38]
	<i>IL10</i>	TGCCCAGTGACAGCGTGATACC TACACCACTGAAGAGCCCCG	137	NM_001245099	Anti-inflammatory function	[39]
	<i>SOD2</i>	TCCCTGACCTGACCTACGAC	201	XR_00247449	Oxidative stress	[40]

Inflammation		GAGGTTTAATGGAGGAGGCC				
	A2M	GGGAGGAAGGATGAGATGAGTA CTAACAGTGGAGCTTCAGGACC	184	XM_021582312	Inhibition of cytokine-induced inflammation	[41]
	RIPK2	TGTTGGCGAAAGGGAGAGGAAT GTACATGAGCAATGGCTCTCTG	105	KJ184523	Modulation of innate and adaptive immune responses	[42]
	NKIRAS2a	TGCATGTCTGCCTGTCTCTTTT TGAGCCCGCAATATGATTGGCA	201	XM_021557705	Regulation of NF-κB signalling	[43]
	RANKL	GAGAGCATCGACTGGGAAAATG T TGTTCTGGGTACTCTGACACCA	125	XM_021620403	Regulation of interactions between T-cells and dendritic cells	[44]
	IL2RG (CD132)	ACCCCCAATGTAAACTGCCTGA TTTCAGCAGCAGGTTTCATCAAAG	112	NM_001124356	Cytokine signalling involved in the stimulation of phagocytosis	[45]
	IL6	GTGTTAGTTAAGGGGAATCCAGT CCTTGCGGAACCAACAGTTTGT	128	NM_001124657	Proinflammatory cytokine and anti-inflammatory myokine	[46]
	CXCL8	ATATAACACTTGTTACCAGCGAG A ATTACTGAGGAGATGAGTCTGA G	106	HG917307	Chemoattraction	[47]
	IL12	ACATTCACTGAGAGTGCGTGTC ACAAGGGGATCCTTCCTCACAA CTGTCAGAGGAACCTTCTGGA	118	HE798148	Differentiation of naïve T-cells	[48]
	IL4/13	C GTGAAAAATGACGCGTTTGGTG A	131	NM_001246341	Regulation of inflammatory processes	[49]
	IL2RB (CD122)	AGAGGACAGTGGCGGTAATGAT CTCACAACCTCCAAGGACTGTT	94	XM_021622445	Cytokine signalling involved in T-cell-mediated immune responses	[50]
	IL1B	GAGAGTGCTGTGGAAGAACATA T ATGAATGAGGCTATGGAGCTGC	157	NM_001124347	Inflammation	[51]

The cell pellets were resuspended in 350 µL RLT buffer (Qiagen, Germany) and stored at −70 °C. RNA was isolated from these samples in separate tubes using TRIzol (Invitrogen, Karlsruhe, Germany) and subsequently purified with the ISOLATE II RNA Micro Kit ((Bioline/Meridian Bioscience, Luckenwalde, Germany). The concentrations of the individual RNA aliquots were adjusted at 2 ng/5 µL or 5 ng/5 µL. After cDNA synthesis using the reverse transcription master mix (Fluidigm, South San Francisco, CA, USA), the cDNA aliquots were individually preamplified in 13 (5 ng RNA input) or 15 cycles (2 ng RNA input) using the PreAmp master mix (Fluidigm, CA, USA) and subsequently treated with exonuclease I (New England BioLabs, Ipswich, MA, USA). Multiplex RT-qPCR was conducted using the Biomark HD system and EvaGreen fluorescence dyes (Bio-Rad, Hercules, CA, USA), as previously described [15]. In brief, the 48.48 Fluidigm gene expression biochips were first primed in the MX integrated fluidic circuit (IFC) controller (Fluidigm, South San Francisco, CA, USA) before being loaded with the preamplified cDNA samples and eventually analysed using the Biomark HD instrument (Fluidigm, CA, USA). The raw RT-qPCR results were retrieved with instrument-specific analysis software (v. 3.0.2; Fluidigm, CA, USA). The geometric means of the copy numbers of the reference genes *EEF1A1* [16] and *RPS5* [17] were used to normalise the expression data.

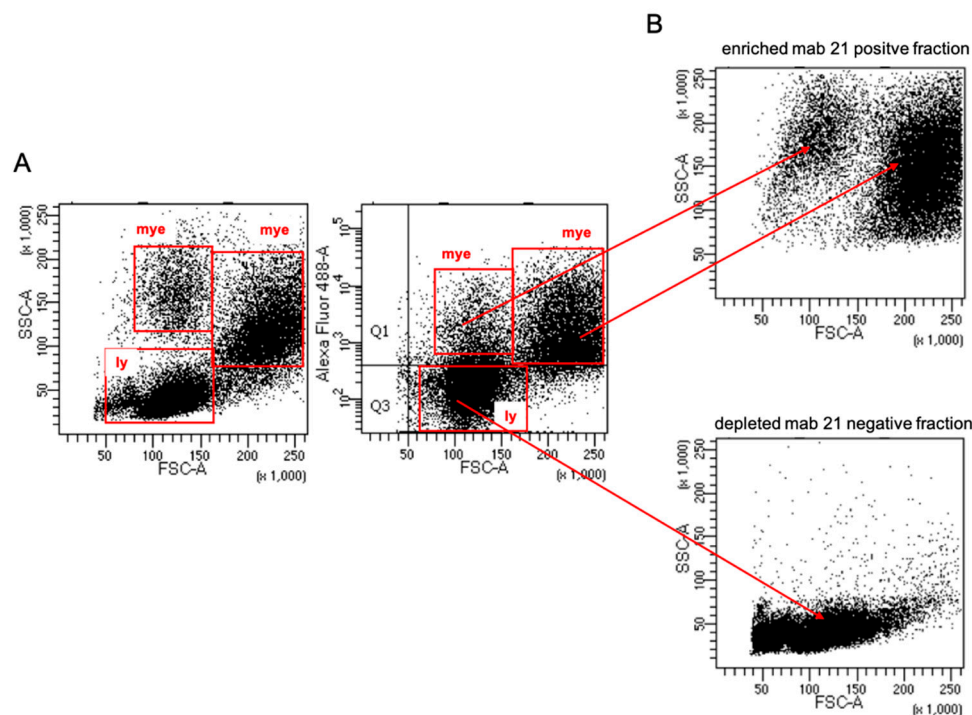
## 2.6. Data Analysis

Heatmaps and data visualisation were performed using MacOS GraphPad 9 or Windows, GraphPad Software, San Diego, CA, USA (<https://www.graphpad.com/>; accessed on 1 October 2021).

### 3. Results

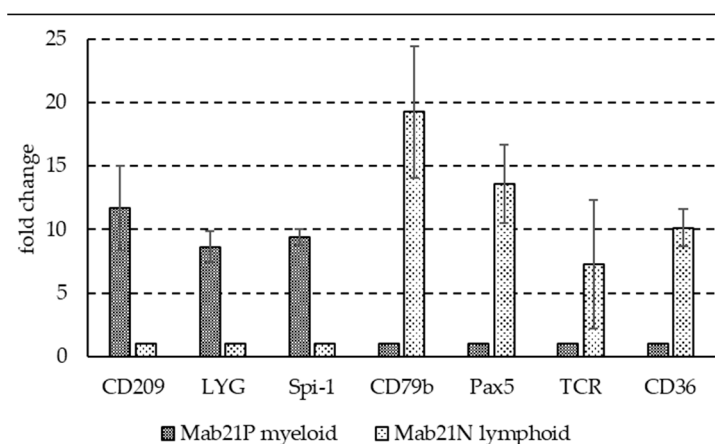
#### 3.1. Basal Expression Profiles of Selected Immune Genes in Two Fractions Enriched in Myeloid Cells or Lymphocytes and Thrombocytes

For the three sampling time points of 12 h, 24 h and 7 d after stimulation with inactivated *A. salmonicida*, head kidney cells were separated into a MAb21P fraction enriched in myeloid cells and a depleted MAb21N cell fraction comprising mainly lymphocytes and thrombocytes (Figure 3). The purity after magnetic sorting was higher than 95%. Both fractions were used to profile a panel of 43 immune genes using multiplex qPCR.



**Figure 3.** (A) Magnetic-activated sorting of head kidney cells from rainbow trout using the myeloid lineage marker specific monoclonal antibody MAb21 resulted in (B) an enriched myeloid cell fraction (MAb21-positive myeloid cells) and a depleted lymphoid cell fraction (MAb21-negative lymphocytes and thrombocytes).

The basal expression of the selected lineage marker genes validated the successful separation of the myeloid MAb21-positive cell fraction (expressing *CD209*, *LYG* and *SPI-1*) from the MAb21-negative fraction containing thrombocytes (*CD36*) and B-lymphocytes (*CD79b*, *PAX5*) and T-lymphocytes (*TCR*) (Figure 4).

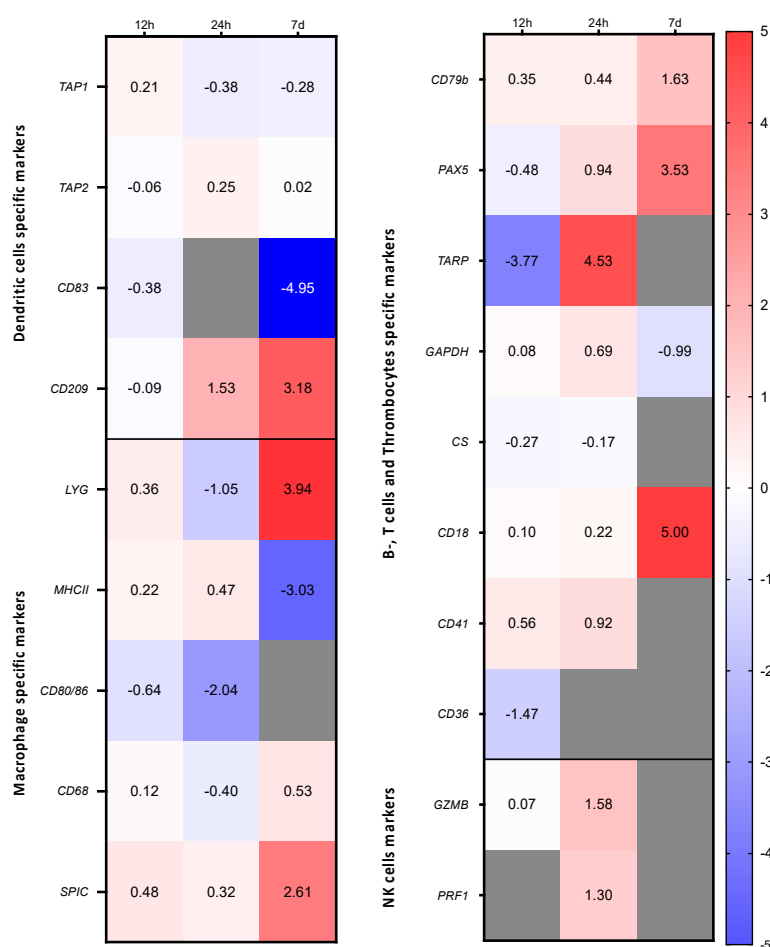


**Figure 4.** Basal expression of the selected lineage marker genes in Mab21-positive myeloid cells and Mab21-negative lymphoid cells.

A comparison of the kinetics of these genes after i.p. injection of PBS indicated that the average basal expression did not change significantly (data not shown).

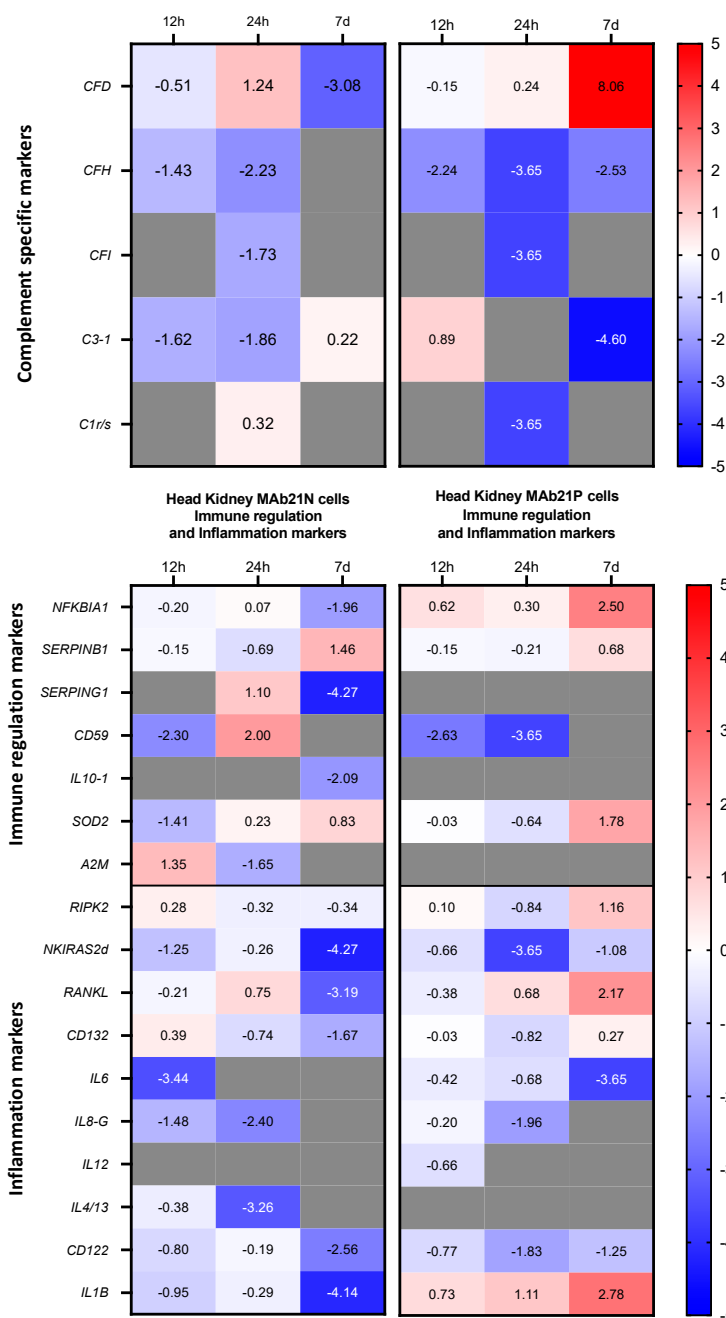
### 3.2. Immune Gene Expression Profiling in Two Fractions Enriched in Myeloid Cells or Lymphocytes and Thrombocytes after Stimulation with *A. salmonicida*

The average expression ratios of the *A. salmonicida*-treated group compared with the PBS-treated control groups are presented in heatmaps as log2 fold change values (Figures 5 and 6).





**Figure 5.** Expression modulation of immune genes specific to myeloid cells (left panel) and to lymphocytes and thrombocytes (right panel) after peritoneal injection of *A. salmonicida* into rainbow trout. The heat map is representative of four samples and illustrates the average expression ratios as log<sub>2</sub> FC values of the *A. salmonicida*-stimulated group relative to the control group (n = 4) for the immune genes listed at the left margin of each panel. *EEF1A1b* and *RPS5* were used as reference genes to normalise the data. Grey fields indicate that the calculation of FC values failed because of undetectable expression in the treated or control groups. Increased and decreased transcript levels in the samples of the stimulated group compared with the controls are indicated by red and blue fields, respectively, according to the legend on the right.



**Figure 6.** Expression modulation of genes specific to inflammation and immune regulation after p.i. injection of inactivated *A. salmonicida* into rainbow trout. The heat map is representative of four samples and illustrates the average expression ratios as log<sub>2</sub> FC values of the stimulated group relative to the control groups (n = 4) for the given immune genes. *EEF1A1b* and *RPS5* were used as reference genes to normalise the data. Grey fields indicate that the calculation of FC values failed because of undetectable expression in the treated or control groups. Increased and decreased

transcript levels in the samples of stimulated rainbow trout compared with controls are indicated by red and blue fields, respectively, according to the legend on the right.

Generally, the expression patterns in both the MAb21P and MAb21N fractions did not change strongly after intraperitoneal stimulation.

Compared with the PBS control groups, *CD209* was upregulated in the MAb21P fraction at 24 h p.s. ( $\log_2$  FC = 1.5) and 7 d p.s. ( $\log_2$  FC = 3.2), while *CD80/86* was downregulated at 24 h p.s. ( $\log_2$  FC = −2). After 7 d p.s., the expression levels of *LYG*, *DC-SIGN* and *SPIC* ( $\log_2$  FC > 2.6) increased. *CD83* underwent a strong downregulation at 7 d p.s. ( $\log_2$  FC = −5), accompanied by a downregulation of *DAA/MHCII* at 7 d p.s. ( $\log_2$  FC = −3) (Figure 5).

In the PBS control groups, we did not detect *CFI*, *IL10* or *IL12* at 12 h p.s.; *CFH*, *C3-1*, *C1r/s*, *CD59*, *SERPING1*, *CFI*, *A2M* or *IL12* at 24 h p.s.; and *IL10* at 7 d p.s. *IL4/13* was not detectable in the controls across all time points.

In the stimulated groups, we did not detect *C1r/s*, *SERPING1* or *IL4/13*, at 12 h p.s.; *CFH*, *C1r/s*, *CD59*, *CFH*, *C3-1*, *C1r/s*, *CD59*, *SERPING1*, *CFI* or *IL4/13* at 24 h p.s.; and *CD80/86*, *C1r/s*, *CD59*, *CFI* or *CXCL8* at 7 d p.s. *A2M* and *IL12* were not detectable in stimulated fish across all time points.

### 3.3. Expression Profiles of Characteristic Markers in the Cell Fraction Enriched with Lymphocytes and Thrombocytes

The transcript level of *TARP* was strongly reduced in the MAb21N fraction 24 h p.s. ( $\log_2$  FC = −3.8), followed by a marked increase 7 d p.s. ( $\log_2$  FC = 4.5). *PAX5* was mildly upregulated in the MAb21N fraction at 24 h p.s. ( $\log_2$  FC = 0.9), but its expression further increased at 7 d p.s. ( $\log_2$  FC = 3.5), together with *CD18* ( $\log_2$  FC = 5). *CD79B* was modestly upregulated across all time points ( $\log_2$  FC between 0.4 and 1.6). The expression levels of *PRF1* increased at 24 h p.s. ( $\log_2$  FC = 1.3) (Figure 5).

In the PBS control groups, we did not detect *PRF1*, *IL10* or *IL12* at 12 h p.s.; *CD36*, *CD94*, *IL10*, *CD59*, *A2M* or *IL12* at 24 h p.s.; and *CD41*, *CD36*, *GZMB*, *PRF1*, *CD94*, *CD59*, *SERPING1*, *A2M*, *IL6*, *CXCL8*, *IL12* or *IL14/13* at 7 d p.s.

In the groups stimulated for 12 h, we did not detect *CD94* or *SERPING1*; both *IL10* and *IL6* were not detectable at 24 h p.s.; and *TARP*, *CD36*, *GZMB*, *CD59*, *SERPING1*, *IL6* and *IL12* were all not detected at 7 d p.s.

### 3.4. Expression Patterns of Complement- and Cytokine-encoding Genes in the Two Cell Fractions from the Head Kidney

At 12 h p.s., the levels of *CD59* ( $\log_2$  FC = −2.3) and *SOD2* ( $\log_2$  FC = −1.4) were reduced in the MAb21N fraction. The *SERPING1* level was upregulated at 24 h p.s. ( $\log_2$  FC = 1.1) and strongly downregulated at 7 d p.s. ( $\log_2$  FC = −4.3). *A2M* was initially upregulated at 12 h p.s. in the MAb21N ( $\log_2$  FC = 1.4), followed by a downregulation at 24 h p.s. ( $\log_2$  FC = −1.7).

The genes encoding cytokines were generally downregulated in both fractions, except for *IL1B*. This gene was upregulated with a  $\log_2$  FC of 1.1 (24 h) and 2.8 (7 d) in the MAb21P fraction but simultaneously strongly downregulated ( $\log_2$  FC of −4.1 at 7 d) in the MAb21N fraction.

In both fractions, *CXCL8* and *IL4/13* were downregulated after 24 h p.s. ( $\log_2$  FC < −1.5). *IL10* and *IL12* were downregulated only at one time point during stimulation in the MAb21N (7 d p.s.) and MAb21P fractions (12 h p.s.), respectively.

*RIP2K*, *SOD2* and *RANKL* were upregulated ( $\log_2$  FC ≥ 1.2) in the MAb21P fraction 7 d p.s. *NFKBIA* levels were downregulated ( $\log_2$  FC = −2) in the MAb21N fraction but upregulated ( $\log_2$  FC = 2.5) in the MAb21P fraction at 7 d p.s. *SERPINB1* levels were mildly downregulated in both cell fractions ( $\log_2$  FC < −0.7), followed by a mild upregulation at 7 d p.s. in the MAb21N ( $\log_2$  FC = 1.5) and MAb21P fractions ( $\log_2$  FC = 0.7).

The expression of the complement genes in both fractions was generally downregulated, except for *CDF*, which showed a strong upregulation ( $\log_2$  FC > 8) at 7 d p.s. in the MAb21P fraction (Figure 6).

#### 4. Discussion

In morphology and function, the head kidney of fish corresponds to the bone marrow of mammals and is one of the most important haematopoietic organs in bony fish. Macrophages and other cells of myeloid origin differentiate in the head kidney. These cells have a core function in innate immunity against a diverse and broad array of pathogens [52] because they are involved in phagocytosis, radical production and cytokine secretion, much like their mammalian counterparts [4].

The aim of the current study was to profile the expression of the specific genes involved in the early immune response of rainbow trout after intraperitoneal stimulation with inactivated *A. salmonicida* ssp. *salmonicida* in two fractions of the head kidney: myeloid cells (MAb21P) and lymphocytes/thrombocytes (MAb21N).

Our results show an overall downregulation of the genes characteristic for cells of myeloid origin, except for *LYG*, *SPIC* and *CD209*, which appeared progressively higher expressed at the later time points analysed. *CD209* is an important mediator of dendritic cell/T-cell clustering and T-cell activation [53]; *SPIC* regulates haematopoietic cell differentiation, proliferation and apoptosis [22]; and *LYG* is involved in the response against bacterial infections [54]. The upregulation of the genes encoding *CD209*, *SPIC* and *LYG* indicates an effective activation of the early immune response, which is supported by the increased expression of the inflammation marker *IL1B*. The downregulated levels of *CD83*, *CD80/86* and *DAA* in the cells of myeloid origin may result from restricted NF- $\kappa$ B activation [55] and might indicate the reduced potential of leukocytes to produce cytokines in the head kidney [56–59]. It is more likely that the observed results indicate that the cells of myeloid origin migrate to the peritoneum to promote the first phase of inflammation at the site of stimulation, thereby leaving only a remaining fraction of unstimulated cells in the head kidney [60].

In the fraction enriched in lymphocytes and thrombocytes, the initially down- and subsequently upregulated level of transcripts coding for T-cell receptor gamma (*TARP*) could be explained by a process known as ‘state-dependent inactivation’. Following its full downregulation, the T-cell receptor complex adapts to conditions of continuous stimulation [61]. *PAX5* and *CD79B* were progressively upregulated after stimulation. A similar regulation has been previously detected in the Chinese sucker (*Myxocyprinus asiaticus*) after being stimulated with inactivated *Aeromonas hydrophila*, suggesting increased levels of signal transduction and B-cell activation [23]. In Nile tilapia challenged with inactivated *A. hydrophila* [62], integrin  $\beta$  (*CD18*) was regulated during the early stimulation phase, indicating the recruitment and activation of leukocytes.

The downregulation of *CD36* may reflect a specific signalling pathway that activates thrombocytes [63]. Unlike their human counterparts, fish thrombocytes are nucleated cells that can phagocyte and regulate the immune response [64]. Thrombocytes from rainbow trout express genes that encode the proteins involved in activation and aggregation, antigen presentation and immune modulation [65]. *CD36* can be downregulated by toll-like receptor (TLR) ligands through TLR-induced cytokines [66], as observed in previous studies [29,67,68].

The early phase of stimulation revealed modulated levels of *PRF1* and *GZMB* in the MAb21N fraction, suggesting the regulation of apoptotic mechanisms by cytotoxic T-lymphocytes and NK cells [31,69].

Complement evasion strategies by pathogenic organisms have previously been reported for different Gram-negative bacteria [35,70]. The expression of complement components in myeloid cells was strongly inhibited in the first 12 h p.s. The strong downregulation of *CFH* and *CFI* at each time point analysed might indicate that the inhibition of the complement system by *A. salmonicida* is not unique to the early stage of

an infection. It has been reported that several bacteria, including *A. salmonicida*, express and modify surface antigens such as outer membrane proteins, capsules and lipopolysaccharide (LPS) to inhibit the complement system [71,72]. Additionally, *A. salmonicida* may promote the immunosuppressive state of fish [73]. Although we used a highly virulent strain of *A. salmonicida*, the cells were inactivated. We cannot rule out the possibility that the membrane antigens of *A. salmonicida* interfered with the proinflammatory response, as reflected by the downregulation of *IL6* and a moderately increased *IL1B* level at the early time points. These proinflammatory cytokines promote the transcription of complement-related genes [74], which were consequently also at low levels. In the myeloid-depleted cell fraction, we did not observe any relevant regulation patterns in the first two time points analysed.

The expression of diverse proinflammatory factors was downregulated in both fractions during the earlier stimulation. The expression of *A2M* coding for A2-macrotubulin was obviously completely inhibited in the myeloid cell fraction across all phases of stimulation. The acquisition of metal ions by pathogens is vital for their survival. Because A2-macrotubulin binds to iron, zinc and copper, its downregulation may be a further hallmark of the suppressed early immune response by *A. salmonicida* [41]. All of the above genes maintained essentially the same expression pattern 7 d after stimulation.

## 5. Conclusion

In conclusion, gene expression profiling in two head kidney cell fractions determined the transcriptional response to inactivated *A. salmonicida* at different time points. Our results have shown that despite the increased expression levels of myeloid cell markers, the expression of proinflammatory and anti-inflammatory cytokines was lower than in the control groups, which may reflect the migration of activated myeloid cells into the peritoneum. The current study provides valuable information about the immune components that should be targeted when developing and evaluating innovative vaccine formulations to provide effective protection against bacterial pathogens such as *A. salmonicida*. This will improve the knowledge of the early phase of the immune response to understand the regulation of immune-related genes upon inactivated bacteria stimulations.

**Author Contributions:** Conceptualisation, F.S., R.M. and A.R.; methodology, F.S., R.M. and S.O.; software, F.S. and A.R.; validation, F.S., B.K. and T.G.; formal analysis, F.S. and S.O.; investigation, F.S., R.M. and S.O.; resources, F.S., A.R., R.M., S.O., B.K. and T.G.; data curation, F.S.; writing—original draft preparation, F.S.; writing—review and editing, R.M., A.R., B.K. and T.G.; visualisation, F.S.; supervision, A.R. and T.G.; project administration, B.K. and T.G.; funding acquisition, B.K. and T.G. All authors have read and agreed to the published version of the manuscript.

**Funding:** This work of the Campus bioFISCH M—V was financed by the European Maritime and Fisheries Fund (EMFF) and the Ministry of Agriculture and the Environment of Mecklenburg-Western Pomerania, Germany (Grant #: MV-II.1-LM-004). The publication of this article was funded by the Open Access Fund of the Research Institute for Farm Animal Biology (FBN). R.M. was financed by the Scholarship Becas Chile-DAAD: Doctoral scholarship with bilateral agreement abroad CONICYT-DAAD.

**Institutional Review Board Statement:** All experimental procedures were complied with the relevant European guidelines on animal welfare (Directive 2010/63/EU on the protection of animals used for scientific purposes) and were approved by the Ethics Board of the Friedrich-Loeffler-Institut (FLI) (approval ID: FLI 28/17).

**Acknowledgments:** We thank B. Schöpel, L. Falkenthal and I. Hennings for their excellent technical assistance.

**Conflicts of Interest:** The authors declare no conflicts of interest.

## Reference

1. FAO. *The State of World Fisheries and Aquaculture 2020*; FAO: Rome, Italy, 2020.
2. Scarfe, A.D.; Lee, C.-S.; O'Bryen, P.J. *Aquaculture Biosecurity: Prevention, Control, and Eradication of Aquatic Animal Disease*; John Wiley & Sons: Hoboken, NJ, USA, 2006.
3. Flores-Kossack, C.; Montero, R.; Köllner, B.; Maisey, K. Chilean Aquaculture and the New Challenges: Pathogens, Immune Response, Vaccination and Fish Diversification. *Fish Shellfish Immunol.* **2020**, *98*, 52–67, <https://doi.org/10.1016/j.fsi.2019.12.093>.
4. Magnadóttir, B. Innate Immunity of Fish (Overview). *Fish Shellfish Immunol.* **2006**, *20*, 137–151, <https://doi.org/10.1016/j.fsi.2004.09.006>.
5. Uribe, C.; Folch, H.; Enriquez, R.; Moran, G. Innate and Adaptive Immunity in Teleost Fish: A Review. *Veterinárni Med.* **2011**, *56*, 486–503, <https://doi.org/10.1016/j.pestbp.2010.09.001>.
6. Brietzke, A.; Korytář, T.; Jaros, J.; Köllner, B.; Goldammer, T.; Seyfert, H.M.; Rebl, A. *Aeromonas Salmonicida* Infection Only Moderately Regulates Expression of Factors Contributing to Toll-like Receptor Signaling but Massively Activates the Cellular and Humoral Branches of Innate Immunity in Rainbow Trout (*Oncorhynchus Mykiss*). *J. Immunol. Res.* **2015**, *2015*, 1–16, <https://doi.org/10.1155/2015/901015>.
7. Rebl, A.; Korytář, T.; Köbis, J.M.; Verleih, M.; Krasnov, A.; Jaros, J.; Kühn, C.; Köllner, B.; Goldammer, T. Transcriptome Profiling Reveals Insight into Distinct Immune Responses to *Aeromonas Salmonicida* in Gill of Two Rainbow Trout Strains. *Mar. Biotechnol.* **2014**, *16*, 333–348, <https://doi.org/10.1007/s10126-013-9552-x>.
8. Janda, J.M.; Abbott, S.L. The Genus *Aeromonas*: Taxonomy, Pathogenicity, and Infection. *Clin. Microbiol. Rev.* **2010**, *23*, 35–73.
9. Galán, J.E.; Lara-Tejero, M.; Marlovits, T.C.; Wagner, S. Bacterial Type III Secretion Systems: Specialized Nanomachines for Protein Delivery into Target Cells. *Annu. Rev. Microbiol.* **2014**, *68*, 415–438.
10. Vanden Bergh, P.; Frey, J. *Aeromonas Salmonicida* Subsp. *Salmonicida* in the Light of Its Type-Three Secretion System. *Microb. Biotechnol.* **2014**, *7*, 381–400.
11. Burr, S.E.; Stuber, K.; Wahli, T.; Frey, J. Evidence for a Type III Secretion System in *Aeromonas Salmonicida* Subsp. *Salmonicida*. *J. Bacteriol.* **2002**, *184*, 5966–5970, <https://doi.org/10.1128/JB.184.21.5966-5970.2002>.
12. Frey, J.; Origgi, F.C. Type III Secretion System of *Aeromonas Salmonicida* Undermining the Host's Immune Response. *Front. Mar. Sci.* **2016**, *3*, 130.
13. Dorrington, M.G.; Fraser, I.D.C. NF- $\kappa$ B Signaling in Macrophages: Dynamics, Crosstalk, and Signal Integration. *Front. Immunol.* **2019**, *10*, 705.
14. Abitew, A.M.; Sobti, R.C.; Sharma, V.L.; Wanchu, A. Analysis of Transporter Associated with Antigen Presentation (TAP) Genes Polymorphisms with HIV-1 Infection. *Mol. Cell. Biochem.* **2020**, *464*, 65–71, <https://doi.org/10.1007/s11010-019-03649-x>.
15. López-Albaitero, A.; Mailliard, R.; Hackman, T.; Filho, P.A.A.; Wang, X.; Gooding, W.; Ferrone, S.; Kalinski, P.; Ferris, R.L. Maturation Pathways of Dendritic Cells Determine TAP1 and TAP2 Levels and Cross-Presenting Function. *J. Immunother.* **2009**, *32*, 465–473, <https://doi.org/10.1097/CJI.0b013e3181a1c24e>.
16. Schwenteit, J.M.; Breithaupt, A.; Teifke, J.P.; Koppang, E.O.; Bornscheuer, U.T.; Fischer, U.; Gudmundsdottir, B.K. Innate and Adaptive Immune Responses of Arctic Charr (*Salvelinus Alpinus*, L.) during Infection with *Aeromonas Salmonicida* Subsp. *Achromogenes* and the Effect of the AsaP1 Toxin. *Fish Shellfish Immunol.* **2013**, *35*, 866–873, <https://doi.org/10.1016/j.fsi.2013.06.024>.
17. Schetters, S.T.T.; Kruijssen, L.J.W.; Crommentuijn, M.H.W.; Kalay, H.; Ochando, J.; den Haan, J.M.M.; Garcia-Vallejo, J.J.; van Kooyk, Y. Mouse DC-SIGN/CD209a as Target for Antigen Delivery and Adaptive Immunity. *Front. Immunol.* **2018**, *9*, 1, <https://doi.org/10.3389/fimmu.2018.00990>.
18. Buonocore, F.; Randelli, E.; Trisolino, P.; Facchiano, A.; de Pascale, D.; Scapigliati, G. Molecular Characterization, Gene Structure and Antibacterial Activity of a g-Type Lysozyme from the European Sea Bass (*Dicentrarchus labrax* L.). *Mol. Immunol.* **2014**, *62*, 10–18, <https://doi.org/10.1016/j.molimm.2014.05.009>.
19. Dijkstra, J.M.; Kiryu, I.; Köllner, B.; Yoshiura, Y.; Otake, M. MHC Class II Invariant Chain Homologues in Rainbow Trout (*Oncorhynchus Mykiss*). *Fish Shellfish Immunol.* **2003**, *15*, 91–105, [https://doi.org/10.1016/S1050-4648\(02\)00141-9](https://doi.org/10.1016/S1050-4648(02)00141-9).
20. Thomas, E.K.; Ostrowski, M.A.; Yu, Q.; Gu, J.X.; Kovacs, C.; Freedman, J. Individuals HIV-1-Infected and HIV-1-Uninfected T Cell Memory Responses in + Specific CD8 Dendritic Cells and the Expansion of Viral in the Activation of  $\alpha$  Ligand, and TNF- $\beta$  Ligand, Receptor Activator of NF- $\kappa$ B Cooperation of TNF Family Members CD40 Cooperation of TNF Family Members CD40 Ligand, Receptor Activator of NF- $\kappa$ B Ligand, and TNF- $\alpha$  in the Activation of Dendritic Cells and the Expansion of Viral Specific CD8<sup>+</sup> T Cell Memory Responses in HIV-1-Infected and HIV-1-Uninfected Individuals. *J. Immunol.* **2003**, *170*, 1797–1805, <https://doi.org/10.4049/jimmunol.170.4.1797>.
21. Chistiakov, D.A.; Killingsworth, M.C.; Myasoedova, V.A.; Orekhov, A.N.; Bobryshev, Y.V. CD68/Macrosialin: Not Just a Histochemical Marker. *Lab. Invest.* **2017**, *97*, 4–13, <https://doi.org/10.1038/labinvest.2016.116>.
22. Oikawa, T.; Yamada, T.; Kihara-Negishi, F.; Yamamoto, H.; Kondoh, N.; Hitomi, Y.; Hashimoto, Y. The Role of Ets Family Transcription Factor PU.1 in Hematopoietic Cell Differentiation, Proliferation and Apoptosis. *Cell Death Differ.* **1999**, *6*, 599–608.
23. Li, H.; Li, Y.; Zhang, X.; Wang, Y.; Zhang, W.; Wu, X.; Wang, Z. Molecular Characterization of the CD79a and CD79b and Its Role against *Aeromonas Hydrophila* Infection in Chinese Sucker (*Myxocyprinus Asiaticus*). *Fish Physiol. Biochem.* **2017**, *43*, 1571–1585, <https://doi.org/10.1007/s10695-017-0394-8>.
24. Cobaleda, C.; Schebesta, A.; Delogu, A.; Busslinger, M. Pax5: The Guardian of B Cell Identity and Function. *Nat. Immunol.* **2007**, *8*, 463–470.

25. Szczepański, T.; Langerak, A.W.; Willemse, M.J.; Wolvers-Tettero, I.L.M.; van Wering, E.R.; van Dongen, J.J.M. T Cell Receptor Gamma (TCRG) Gene Rearrangements in T Cell Acute Lymphoblastic Leukemia Reflect “end-Stage” Recombinations: Implications for Minimal Residual Disease Monitoring. *Leukemia* **2000**, *14*, 1208–1214, <https://doi.org/10.1038/sj.leu.2401765>.
26. Galván-Peña, S.; Carroll, R.G.; Newman, C.; Hinchy, E.C.; Palsson-McDermott, E.; Robinson, E.K.; Covarrubias, S.; Nadin, A.; James, A.M.; Haneklaus, M.; et al. Malonylation of GAPDH Is an Inflammatory Signal in Macrophages. *Nat. Commun.* **2019**, *10*, 1–11, <https://doi.org/10.1038/S41467-018-08187-6>.
27. Ji, D.; Yin, J.Y.; Li, D.F.; Zhu, C.T.; Ye, J.P.; Pan, Y.Q. Effects of Inflammatory and Anti-Inflammatory Environments on the Macrophage Mitochondrial Function. *Sci. Rep.* **2020**, *10*, 1–13, <https://doi.org/10.1038/s41598-020-77370-x>.
28. Maignel, D.; Faridi, M.H.; Wei, C.; Kuwano, Y.; Balla, K.M.; Hernandez, D.; Barth, C.J.; Lugo, G.; Donnelly, M.; Nayer, A.; et al. Small Molecule-Mediated Activation of the Integrin CD11b/CD18 Reduces Inflammatory Disease. *Sci. Signal.* **2011**, *4*, ra57–ra57, <https://doi.org/10.1126/scisignal.2001811>.
29. Ali, R.A.; Wuescher, L.M.; Worth, R.G. Platelets: Essential Components of the Immune System. *Curr. Trends Immunol.* **2015**, *16*, 65.
30. Fink, I.R.; Benard, E.L.; Hermesen, T.; Meijer, A.H.; Forlenza, M.; Wiegertjes, G.F. Molecular and Functional Characterization of the Scavenger Receptor CD36 in Zebrafish and Common Carp. *Mol. Immunol.* **2015**, *63*, 381–393, <https://doi.org/10.1016/j.molimm.2014.09.010>.
31. Voskoboinik, I.; Whisstock, J.C.; Trapani, J.A. Perforin and Granzymes: Function, Dysfunction and Human Pathology. *Nat. Rev. Immunol.* **2015**, *15*, 388–400.
32. Trapani, J.A.; Smyth, M.J. Functional Significance of the Perforin/Granzyme Cell Death Pathway. *Nat. Rev. Immunol.* **2002**, *2*, 735–747.
33. Gunturi, A.; Berg, R.E.; Forman, J. The Role of CD94/NKG2 in Innate and Adaptive Immunity. *Immunol. Res.* **2004**, *30*, 29–34.
34. Köbis, J.M.; Rebl, A.; Kühn, C.; Korytář, T.; Köllner, B.; Goldammer, T. Comprehensive and Comparative Transcription Analyses of the Complement Pathway in Rainbow Trout. *Fish Shellfish Immunol.* **2015**, *42*, 98–107, <https://doi.org/10.1016/j.fsi.2014.10.032>.
35. Almitairi, J.O.M.; Girija, U.V.; Furze, C.M.; Simpson-Gray, X.; Badakshi, F.; Marshall, J.E.; Schwaeble, W.J.; Mitchell, D.A.; Moody, P.C.E.; Wallis, R. Structure of the C1r–C1s Interaction of the C1 Complex of Complement Activation. *Proc. Natl. Acad. Sci. USA* **2018**, *115*, 768–773, <https://doi.org/10.1073/pnas.1718709115>.
36. Tian, B.; Nowak, D.E.; Jamaluddin, M.; Wang, S.; Brasier, A.R. Identification of Direct Genomic Targets Downstream of the NF-Kappa B Transcription Factor Mediating TNF Signaling. *J. Biol. Chem.* **2005**, *280*, 17435–17448.
37. Bao, J.; Pan, G.; Poncz, M.; Wei, J.; Ran, M.; Zhou, Z. Serpin Functions in Host-Pathogen Interactions. *Peer J.* **2018**, *6*, e4557, <https://doi.org/10.7717/peerj.4557>.
38. Morgan, P. CD59. In *The Complement FactsBook: Second Edition*; Elsevier: Amsterdam, The Netherlands, 2018; pp. 361–367, ISBN 9780128104200.
39. Carla Piazzon, M.; Lutfall, G.; Forlenza, M. IL10, a Tale of an Evolutionarily Conserved Cytokine across Vertebrates. *Crit. Rev. Immunol.* **2016**, *36*, 99–129, <https://doi.org/10.1615/CritRevImmunol.2016017480>.
40. Peterman, E.M.; Sullivan, C.; Goody, M.F.; Rodriguez-Nunez, I.; Yoder, J.A.; Kim, C.H. Neutralization of Mitochondrial Superoxide by Superoxide Dismutase 2 Promotes Bacterial Clearance and Regulates Phagocyte Numbers in Zebrafish. *Infect. Immun.* **2015**, *83*, 430–440, <https://doi.org/10.1128/IAI.02245-14>.
41. Ellis, A.E. Inhibition of the Aeromonas Salmonicida Extracellular Protease by A2-Macroglobulin in the Serum of Rainbow Trout. *Microb. Pathog.* **1987**, *3*, 167–177, [https://doi.org/10.1016/0882-4010\(87\)90093-3](https://doi.org/10.1016/0882-4010(87)90093-3).
42. Wu, X.M.; Chen, W.Q.; Hu, Y.W.; Cao, L.; Nie, P.; Chang, M.X. RIP2 Is a Critical Regulator for NLRs Signaling and MHC Antigen Presentation but Not for MAPK and PI3K/Akt Pathways. *Front. Immunol.* **2018**, *9*, 726, <https://doi.org/10.3389/fimmu.2018.00726>.
43. Sarais, F.; Rebl, H.; Verleih, M.; Ostermann, S.; Krasnov, A.; Köllner, B.; Goldammer, T.; Rebl, A. Characterisation of the Teleostean KB-Ras Family: The Two Members NKIRAS1 and NKIRAS2 from Rainbow Trout Influence the Activity of NF-KB in Opposite Ways. *Fish Shellfish Immunol.* **2020**, *106*, 1004–1013, <https://doi.org/10.1016/j.fsi.2020.08.052>.
44. Glenney, G.W.; Wiens, G.D. Early Diversification of the TNF Superfamily in Teleosts: Genomic Characterization and Expression Analysis. *J. Immunol.* **2007**, *178*, 7955–7973, <https://doi.org/10.4049/jimmunol.178.12.7955>.
45. Rathé, C.; Girard, D. Interleukin-15 Enhances Human Neutrophil Phagocytosis by a Syk-Dependent Mechanism: Importance of the IL-15R $\alpha$  Chain. *J. Leukoc. Biol.* **2004**, *76*, 162–168, <https://doi.org/10.1189/jlb.0605298>.
46. Wang, T.; Secombes, C.J. Identification and Expression Analysis of Two Fish-Specific IL-6 Cytokine Family Members, the Ciliary Neurotrophic Factor (CNTF)-like and M17 Genes, in Rainbow Trout *Oncorhynchus Mykiss*. *Mol. Immunol.* **2009**, *46*, 2290–2298, <https://doi.org/10.1016/j.molimm.2009.04.003>.
47. Rebl, A.; Rebl, H.; Korytář, T.; Goldammer, T.; Seyfert, H.M. The Proximal Promoter of a Novel Interleukin-8-Encoding Gene in Rainbow Trout (*Oncorhynchus Mykiss*) Is Strongly Induced by CEBPA, but not NF- $\kappa$ B p65. *Dev. Comp. Immunol.* **2014**, *46*, 155–164, <https://doi.org/10.1016/j.dci.2014.03.024>.
48. Vignali, D.A.A.; Kuchroo, V.K. IL-12 Family Cytokines: Immunological Playmakers. *Nat. Immunol.* **2012**, *13*, 722–728.
49. Li, J.H.; Shao, J.Z.; Xiang, L.X.; Wen, Y. Cloning, Characterization and Expression Analysis of Pufferfish Interleukin-4 CDNA: The First Evidence of Th2-Type Cytokine in Fish. *Mol. Immunol.* **2007**, *44*, 2078–2086, <https://doi.org/10.1016/j.molimm.2006.09.010>.

50. Wang, T.; Hu, Y.; Wangkahart, E.; Liu, F.; Wang, A.; Zahran, E.; Maisey, K.R.; Liu, M.; Xu, Q.; Imarai, M.; et al. Interleukin (IL)-2 Is a Key Regulator of T Helper 1 and T Helper 2 Cytokine Expression in Fish: Functional Characterization of Two Divergent IL2 Paralogs in Salmonids. *Front. Immunol.* **2018**, *9*, 1683, <https://doi.org/10.3389/fimmu.2018.01683>.
51. Sigh, J.; Lindenstrøm, T.; Buchmann, K. Expression of Pro-Inflammatory Cytokines in Rainbow Trout (*Oncorhynchus Mykiss*) during an Infection with *Ichthyophthirius Multifiliis*. *Fish Shellfish Immunol.* **2004**, *17*, 75–86, <https://doi.org/10.1016/j.fsi.2003.12.005>.
52. Ellis, A.E. Innate Host Defense Mechanisms of Fish against Viruses and Bacteria. *Dev. Comp. Immunol.* **2001**, *25*, 827–839, [https://doi.org/10.1016/S0145-305X\(01\)00038-6](https://doi.org/10.1016/S0145-305X(01)00038-6).
53. Geijtenbeek, T.B.H.; Torensma, R.; van Vliet, S.J.; van Duijnhoven, G.C.F.; Adema, G.J.; van Kooyk, Y.; Figdor, C.G. Identification of DC-SIGN, a Novel Dendritic Cell-Specific ICAM-3 Receptor That Supports Primary Immune Responses. *Cell* **2000**, *100*, 575–585, [https://doi.org/10.1016/S0092-8674\(00\)80693-5](https://doi.org/10.1016/S0092-8674(00)80693-5).
54. Jiménez-Cantizano, R.M.; Infante, C.; Martin-Antonio, B.; Ponce, M.; Hachero, I.; Navas, J.I.; Manchado, M. Molecular Characterization, Phylogeny, and Expression of c-Type and g-Type Lysozymes in Brill (*Scophthalmus rhombus*). *Fish Shellfish Immunol.* **2008**, *25*, 57–65, <https://doi.org/10.1016/J.FSI.2007.12.009>.
55. Gomard, T.; Michaud, H.-A.; Tempé, D.; Thiolon, K.; Pelegrin, M.; Piechaczyk, M. An NF- $\kappa$ B-Dependent Role for JunB in the Induction of Proinflammatory Cytokines in LPS-Activated Bone Marrow-Derived Dendritic Cells. *PLoS ONE* **2010**, *5*, e9585, <https://doi.org/10.1371/JOURNAL.PONE.0009585>.
56. Aerts-Toegaert, C.; Heirman, C.; Tuyaeerts, S.; Corthals, J.; Aerts, J.L.; Bonehill, A.; Thielemans, K.; Breckpot, K.; Breckpot, K. CD83 Expression on Dendritic Cells and T Cells: Correlation with Effective Immune Responses. *Eur. J. Immunol.* **2007**, *37*, 686–695, <https://doi.org/10.1002/EJL.200636535>.
57. Sahoo, N.C.; Rao, K.V.S.; Natarajan, K. CD80 Expression Is Induced on Activated B Cells Following Stimulation by CD86. *Scand. J. Immunol.* **2002**, *55*, 577–584, <https://doi.org/10.1046/J.1365-3083.2002.01093.X>.
58. Lane, P. Regulation of T and B Cell Responses by Modulating Interactions between CD28/CTLA4 and Their Ligands, CD80 and CD86. *Ann. N. Y. Acad. Sci.* **1997**, *815*, 392–400, <https://doi.org/10.1111/J.1749-6632.1997.TB52090.X>.
59. Lüder, C.G.K.; Lang, T.; Beuerle, B.; Gross, U. Down-Regulation of MHC Class II Molecules and Inability to up-Regulate Class I Molecules in Murine Macrophages after Infection with *Toxoplasma Gondii*. *Clin. Exp. Immunol.* **1998**, *112*, 308, <https://doi.org/10.1046/J.1365-2249.1998.00594.X>.
60. Korytář, T.; Jaros, J.; Verleih, M.; Rebl, A.; Kotterba, G.; Kühn, C.; Goldammer, T.; Köllner, B. Novel Insights into the Peritoneal Inflammation of Rainbow Trout (*Oncorhynchus mykiss*). *Fish Shellfish Immunol.* **2013**, *35*, 1192–1199, <https://doi.org/10.1016/j.fsi.2013.07.032>.
61. Trendel, N.; Kruger, P.; Gaglione, S.; Nguyen, J.; Pettmann, J.; Sontag, E.D.; Dushek, O. Perfect Adaptation of CD8<sup>+</sup> T Cell Responses to Constant Antigen Input over a Wide Range of Affinity Is Overcome by Costimulation. *Sci. Signal.* **2021**, *14*, 666 <https://doi.org/10.1101/535385>.
62. Hu, Q.; Ao, Q.; Zhu, J. Response of Chemokine Receptors CXCR2 and Integrin B2 after *Streptococcus Agalactiae* and *Aeromonas Hydrophila* Challenge in GIFT Strain of Nile Tilapia *Oreochromis Niloticus*. *Dev. Comp. Immunol.* **2021**, *115*, 103897, <https://doi.org/10.1016/j.dci.2020.103897>.
63. Silverstein, R.L. Type 2 Scavenger Receptor CD36 in Platelet Activation: The Role of Hyperlipemia and Oxidative Stress. *Clin. Lipidol.* **2009**, *4*, 767, <https://doi.org/10.2217/CLP.09.57>.
64. Ferdous, F.; Scott, T.R. A Comparative Examination of Thrombocyte/Platelet Immunity. *Immunol. Lett.* **2015**, *163*, 32–39, <https://doi.org/10.1016/j.imlet.2014.11.010>.
65. Köllner, B.; Fischer, U.; Rombout, J.H.W.M.; Taverne-Thiele, J.J.; Hansen, J.D. Potential Involvement of Rainbow Trout Thrombocytes in Immune Functions: A Study Using a Panel of Monoclonal Antibodies and RT-PCR. *Dev. Comp. Immunol.* **2004**, *28*, 1049–1062, <https://doi.org/10.1016/j.dci.2004.03.005>.
66. Zamora, C.; Cantó, E.; Nieto, J.C.; Ortiz, M.A.; Juárez, C.; Vidal, S. Functional Consequences of CD36 Downregulation by TLR Signals. *Cytokine* **2012**, *60*, 257–265, <https://doi.org/10.1016/J.CYTO.2012.06.020>.
67. Li, C.; Tian, M.; Zhang, L.; Fu, Q.; Song, L.; Yang, N. Expression Profiling and Functional Characterization of CD36 in Turbot (*Scophthalmus maximus* L.). *Fish Shellfish Immunol.* **2018**, *81*, 485–492, <https://doi.org/10.1016/j.fsi.2018.07.056>.
68. Van der Sar, A.M.; Spaink, H.P.; Zakrzewska, A.; Bitter, W.; Meijer, A.H. Specificity of the Zebrafish Host Transcriptome Response to Acute and Chronic Mycobacterial Infection and the Role of Innate and Adaptive Immune Components. *Mol. Immunol.* **2009**, *46*, 2317–2332, <https://doi.org/10.1016/j.molimm.2009.03.024>.
69. Merselis, L.C.; Rivas, Z.P.; Munson, G.P. Breaching the Bacterial Envelope: The Pivotal Role of Perforin-2 (MPEG1) Within Phagocytes. *Front. Immunol.* **2021**, *12*, 1.
70. Heesterbeek, D.A.C.; Angelier, M.L.; Harrison, R.A.; Rooijackers, S.H.M. Complement and Bacterial Infections: From Molecular Mechanisms to Therapeutic Applications. *J. Innate Immun.* **2018**, *10*, 455–464.
71. Lambris, J.D.; Ricklin, D.; Geisbrecht, B. v. Complement Evasion by Human Pathogens. *Nat. Rev. Microbiol.* **2008**, *6*, 132, <https://doi.org/10.1038/NRMICRO1824>.
72. Merino, S.; Alberti, S.; Tomasl, J.M. *Aeromonas Salmonicida* Resistance to Complement-Mediated Killing. *Infect. Immun.* **1994**, *62*, 5483–5490.

- 
73. Menanteau-Ledouble, S.; Kumar, G.; Saleh, M.; El-Matbouli, M. *Aeromonas Salmonicida*: Updates on an Old Acquaintance. *Dis. Aquat. Org.* **2016**, *120*, 49–68.
  74. Volanakis, J.E. Transcriptional Regulation of Complement Genes. *Annu. Rev. Immunol.* **1995**, *13*, 277–305, <https://doi.org/10.1146/ANNUREV.IY.13.040195.001425>.