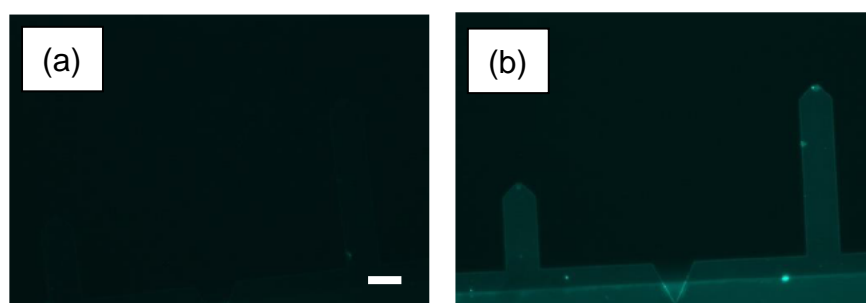


**Supplementary Figure S1**

Assessment of the presence of reactive sulfhydryl groups on the surface of the DeepTip™ probes with the usage of a fluorophore that specifically binds to these groups. (a) DeepTip™ probe without sulfo-LC-SPDP. (b) DeepTip™ probe incubated with sulfo-LC-SPDP and subsequent immersion in TCEP solution. Scale bar: 40  $\mu\text{m}$ .



### Supplementary Table S1

The assessment of the modification of Pru p 3 with sulfo-LC-SPDP was performed using a control sample prepared by mixing 2  $\mu$ L of the modified protein solution after being filtered with 2  $\mu$ L of PBS for 5 min. Alternatively, another sample with 2  $\mu$ L of the modified protein solution after being filtered was mixed with 2  $\mu$ L of a 3 mg/mL TCEP solution in PBS and allowed to react for 5 min. Absorbance was measured at 280 nm to identify the presence of the protein and at 343 nm to identify the presence of pyridine 2-thione. The pyridine 2-thione results from the reduction of the sulfo-LC-SPDP molecule.

Sample	Redox state	Abs 280 nm	Abs 343 nm
Control	Oxidized	0.064	1. 0.006
TCEP	Reduced	0.066	2. 0.047

**Disclaimer/Publisher's Note:** The statements, opinions and data contained in all publications are solely those of the individual author(s) and contributor(s) and not of MDPI and/or the editor(s). MDPI and/or the editor(s) disclaim responsibility for any injury to people or property resulting from any ideas, methods, instructions or products referred to in the content.