

Limiting factors affecting the ionic conductivities of LATP/polymer hybrid electrolytes

Adrien Méry¹, Steeve Rousselot¹, David Lepage¹, David Aymé-Perrot², Mickaël Dollé^{1*}

¹Département de Chimie, Université de Montréal, 1375 Avenue Thérèse-Lavoie-Roux, Montréal, Québec H2V 0B3, Canada

²TotalEnergies SE, 2 Pl. Jean Millier, La Défense 6, 92078, Paris (France)

Supporting Information

Figure S1. SEM pictures of the LATP powder used throughout the study

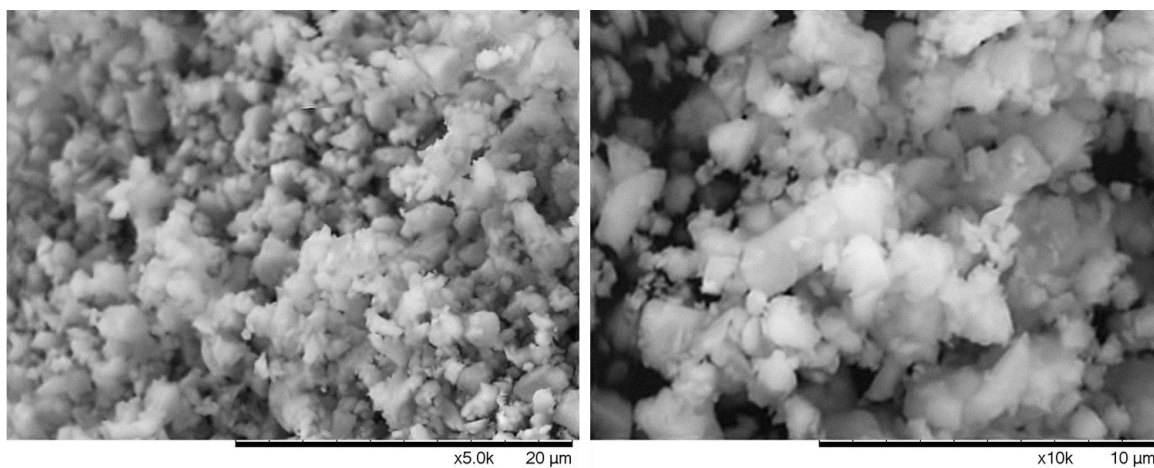


Figure S2. XRD pattern of the LATP powder synthesized for this study and corresponding pellet after SPS sintering at 850°C for this study

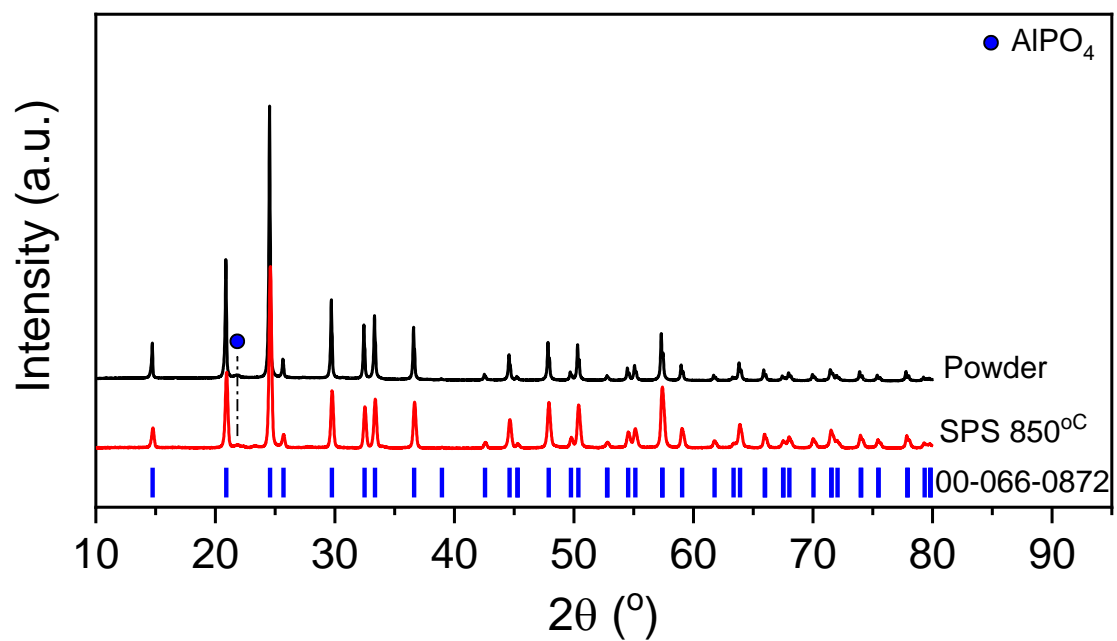


Figure S3. SEM picture of the cross section of the LATP SPS pellet sintered at 850°C.

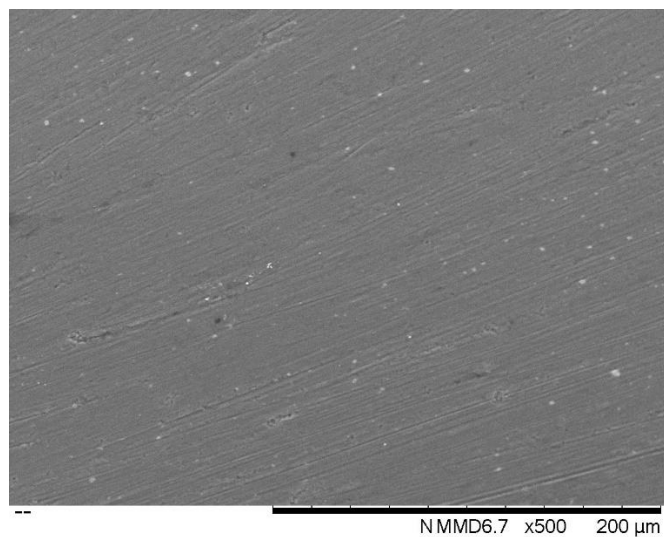


Figure S4. EIS Diagram at room temperature of the LATP pellet produced by SPS at 850°C

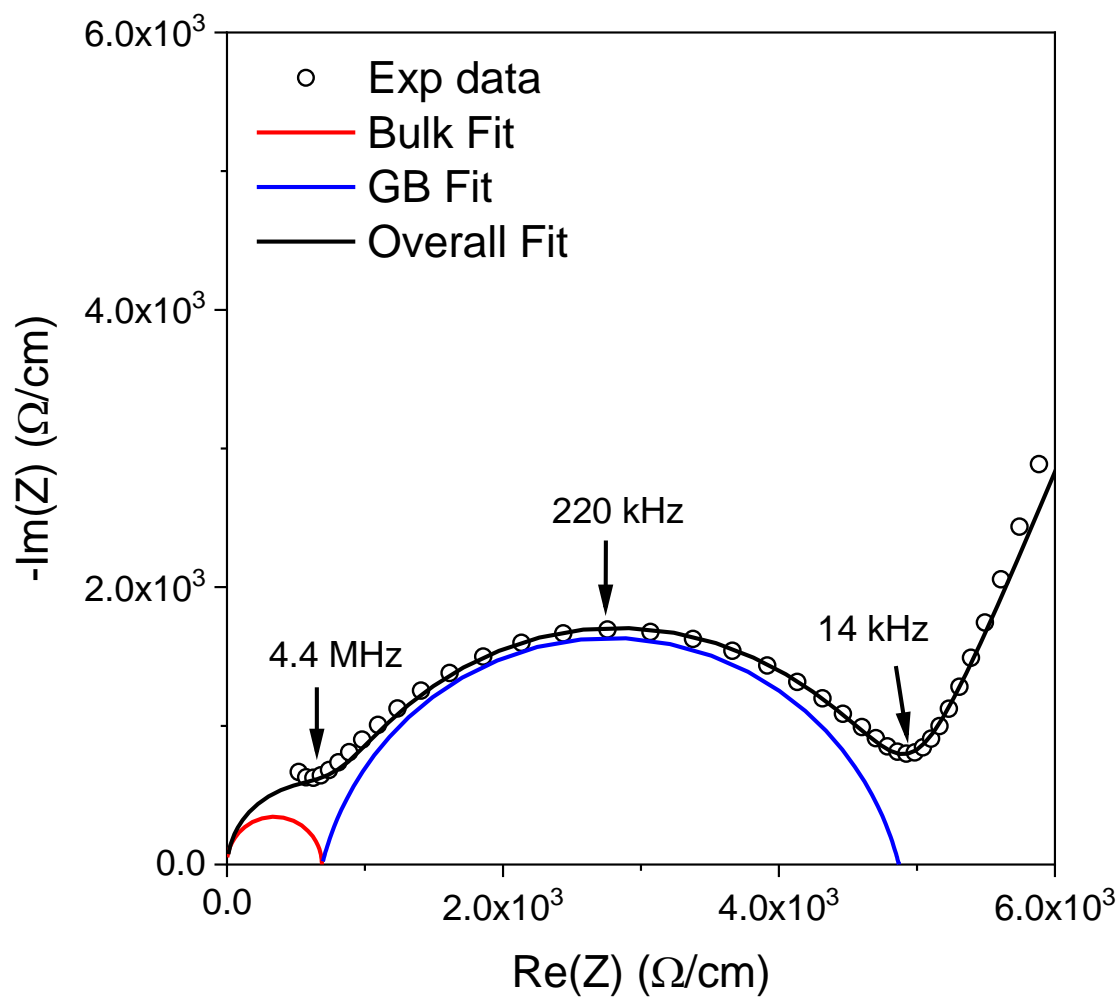


Figure S5. EIS Diagram of LATP pellets produced by SPS and NS at 850°C and 500°C

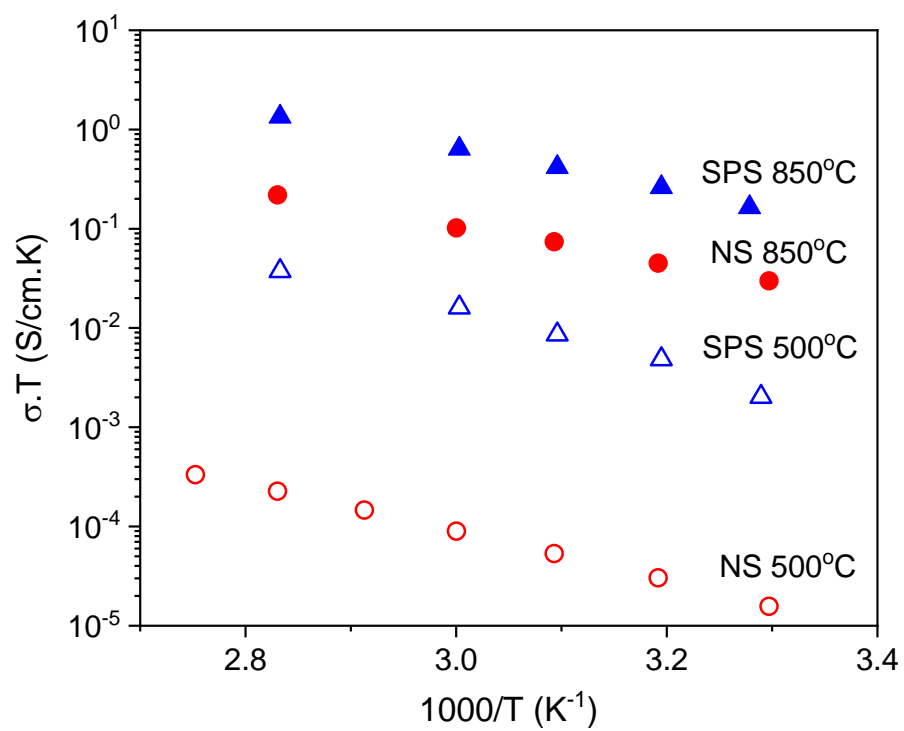


Figure S6. SEM picture of the cross section of the LATP NS pellet prepared at 500°C.

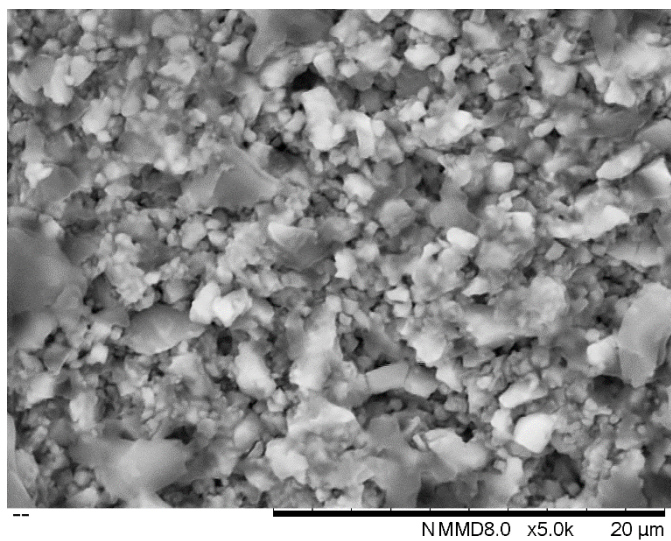


Figure S7. EIS diagrams at 20 MPa upon decrease of applied pressure for LATP at 70°C for compact powder (a) and pellet produced by SPS at 850°C (b)

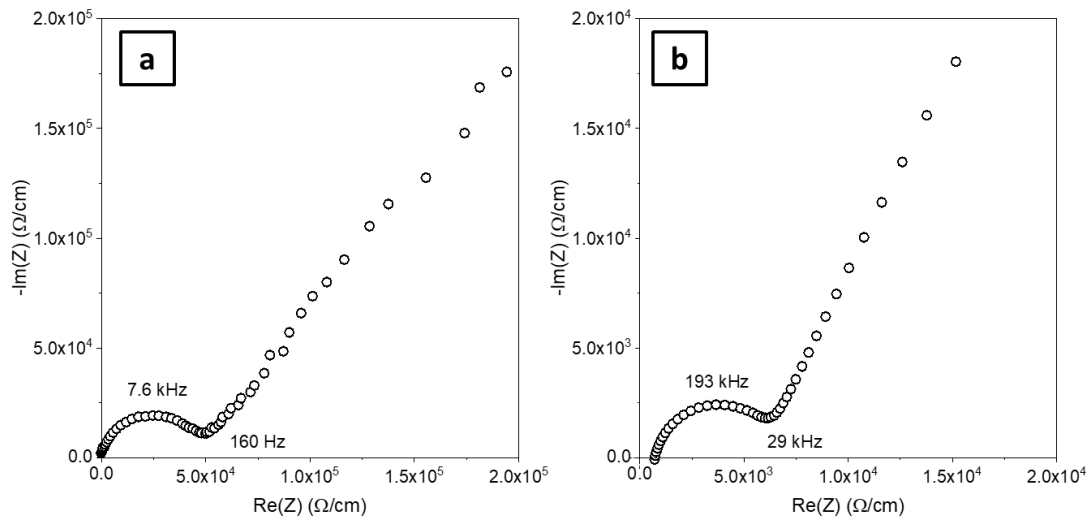
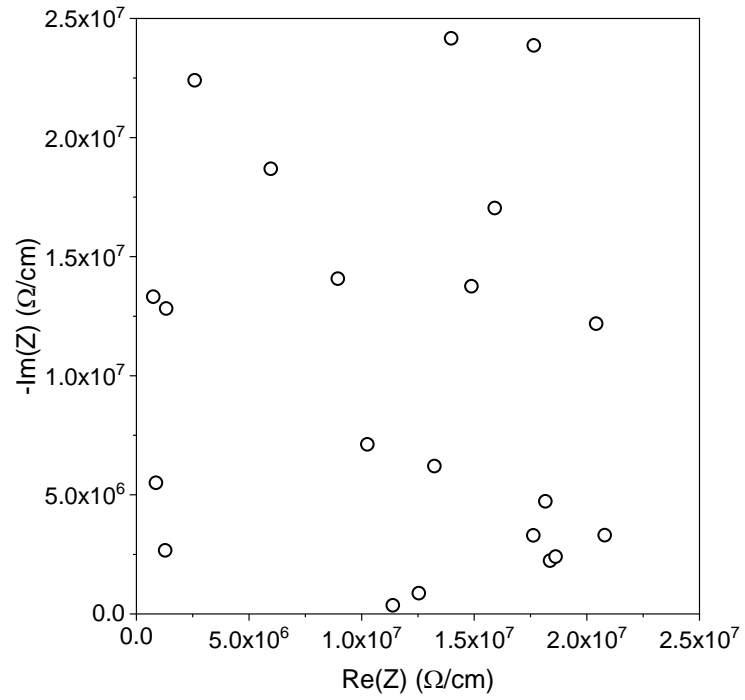


Figure S8. EIS diagrams at RT at 20 MPa upon decrease of applied pressure for PEO-LATP75 without LITFSI Salt



* Noisy and impracticable data are resulting of the limitation of the potentiostat which represents an ionic conductivity lower then 10^{-11} S/cm in our configuration.