

Figure S1. The phylogenetic tree of known *fru* genes in insects. Two *B. tabaci* *fru* transcripts are highlighted in red word.

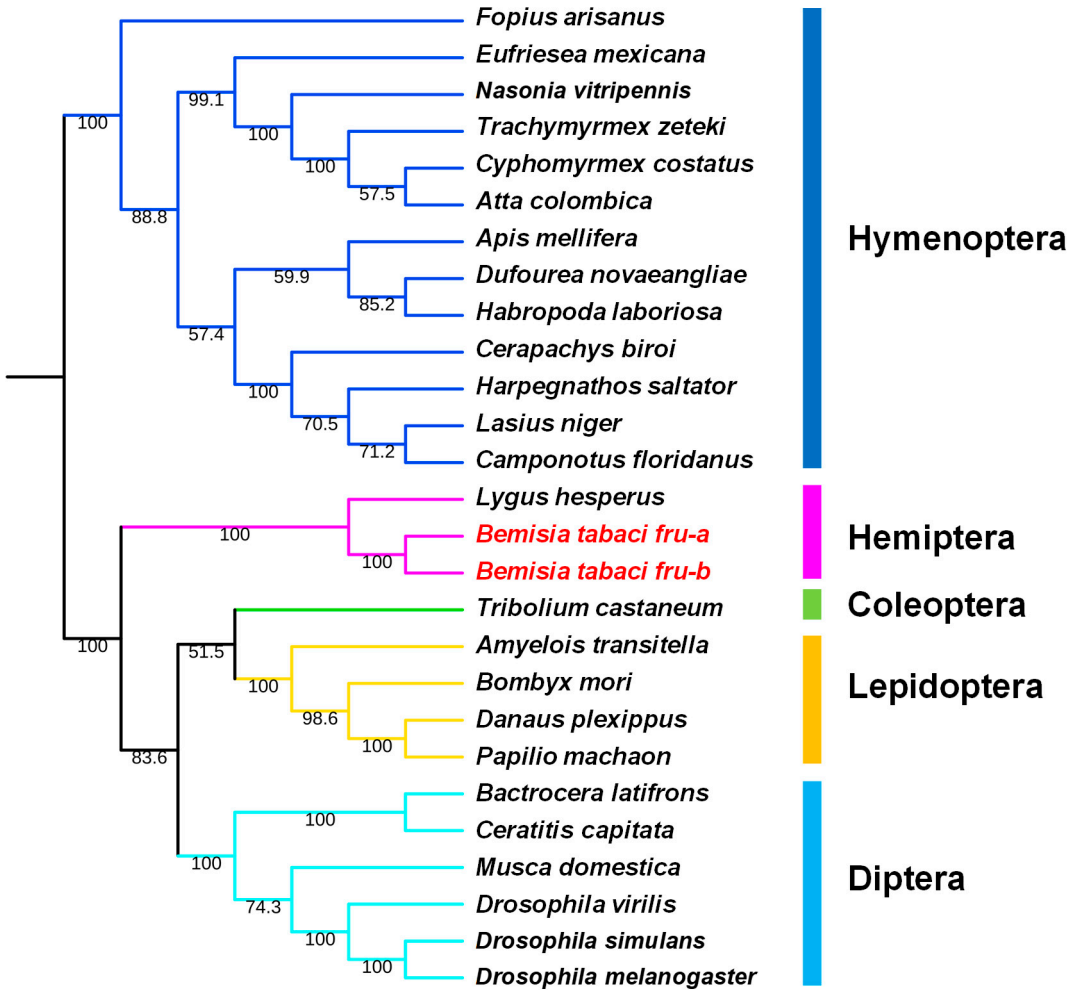


Figure S2. Conservation of zinc finger domains among insect species. Alignments are presented separately for ZnA and ZnG domain. Region identities calculated by DNAMAN software are indicated.



Figure S3. PCR cloning of *fru-a* and *fru-b* in *B. tabaci* female and male.

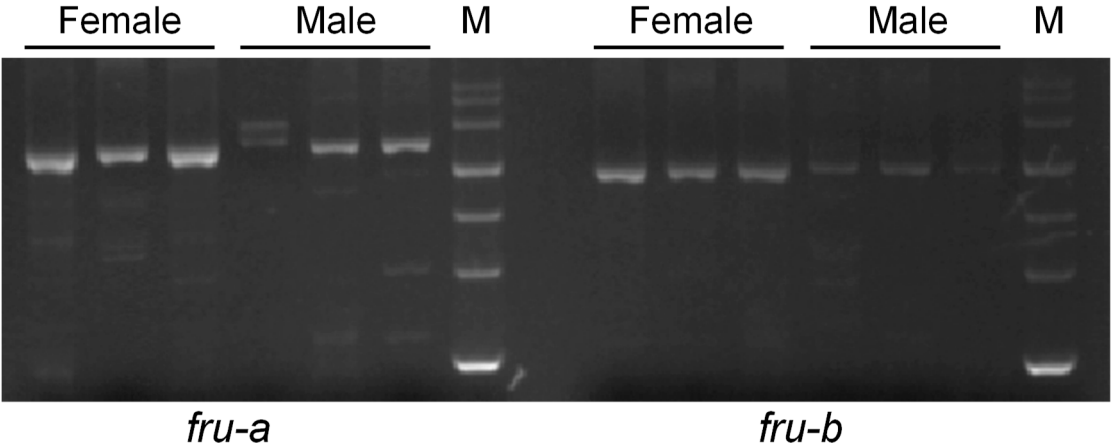


Figure S4. Expression levels of *fru* transcripts in *B. tabaci* adults.

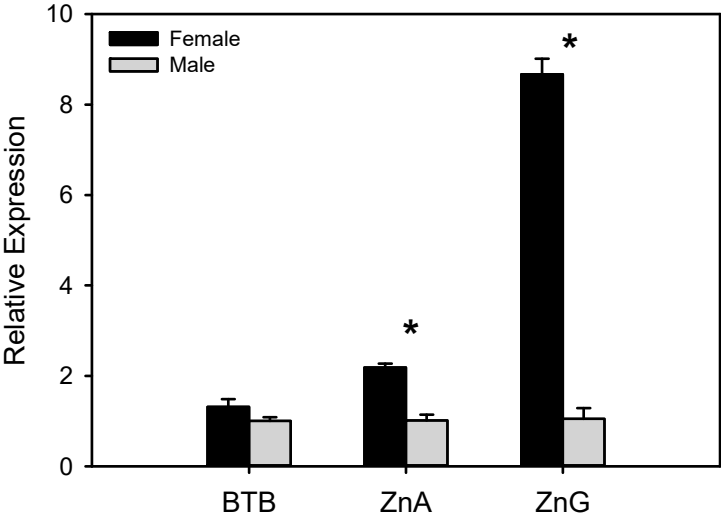


Figure S5. Conservation of BTB domains among insect species. Region identities calculated by DNAMAN software are indicated.

