

## Supplementary file

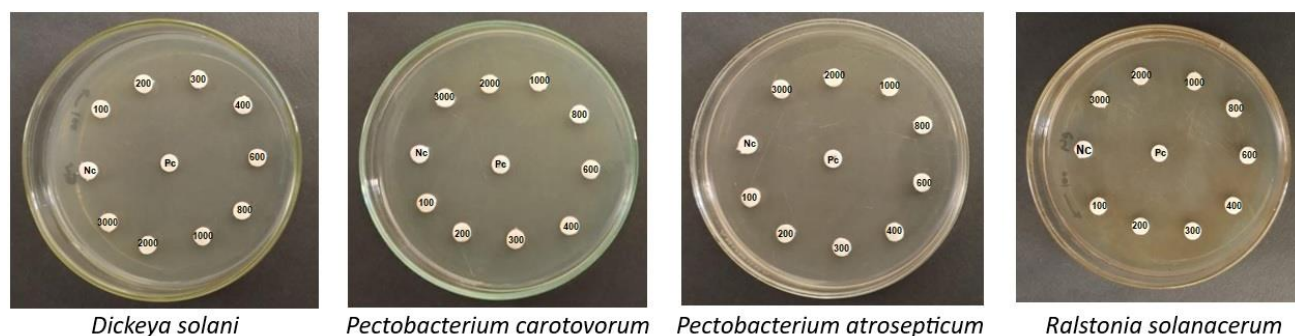


Figure S1. The inhibitory effect of silk floss tree stem bark extract (SFSB) at different concentrations (100, 200, 300, 400, 600, 800, 1000, 2000, and 3000 µg/mL) against various potato bacterial diseases. Pc= positive control (Amoxicillin 25µg/disc), Nc= negative control (DMSO 10%).

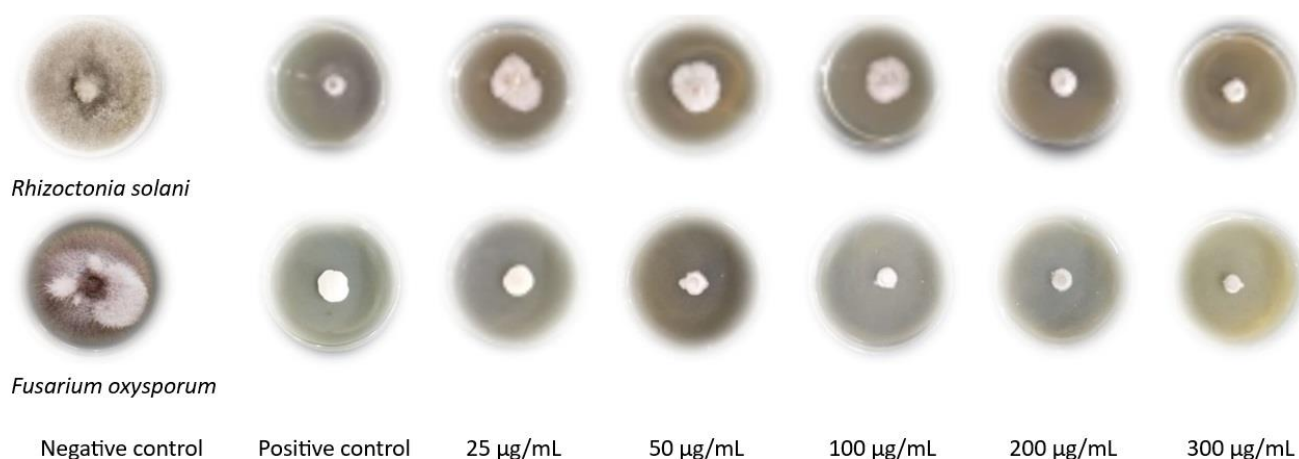


Figure S2. The inhibitory effect of silk floss tree stem bark extract (SFSB) at different concentrations (25, 50, 100, 200, and 300 µg/mL) on *Rhizoctonia solani* and *Fusarium oxysporum* fungal isolates. Positive control (Norma Cu-98 fungicide; the final concentration in media is 1 µg/mL) and negative control (PDA-supplement with 10% DMSO).