



Figure S1. Radish sprouts grown under different carbon sources for ten days.

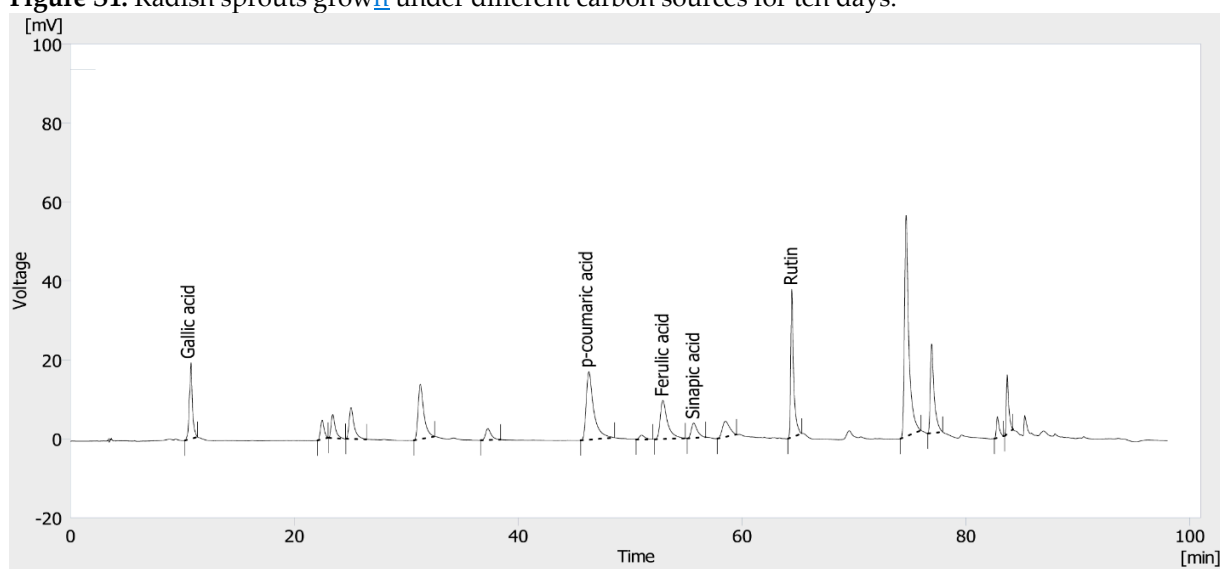


Figure S2. HPLC chromatogram of five standard phenolic compounds.

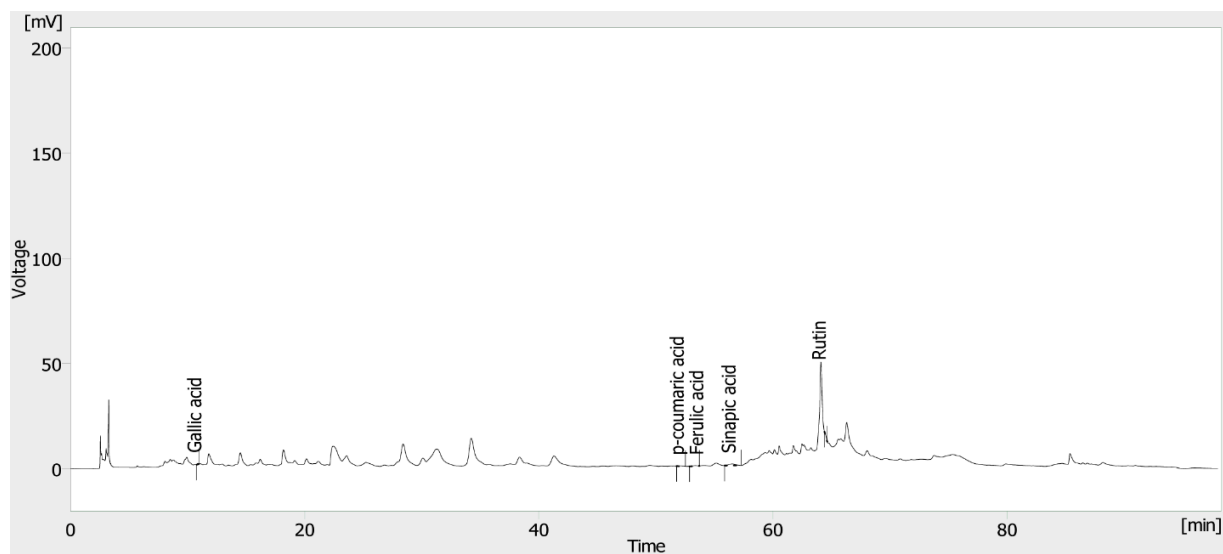


Figure S3. HPLC chromatogram of phenolic compounds from radish sprouts untreated with a carbon source (control).

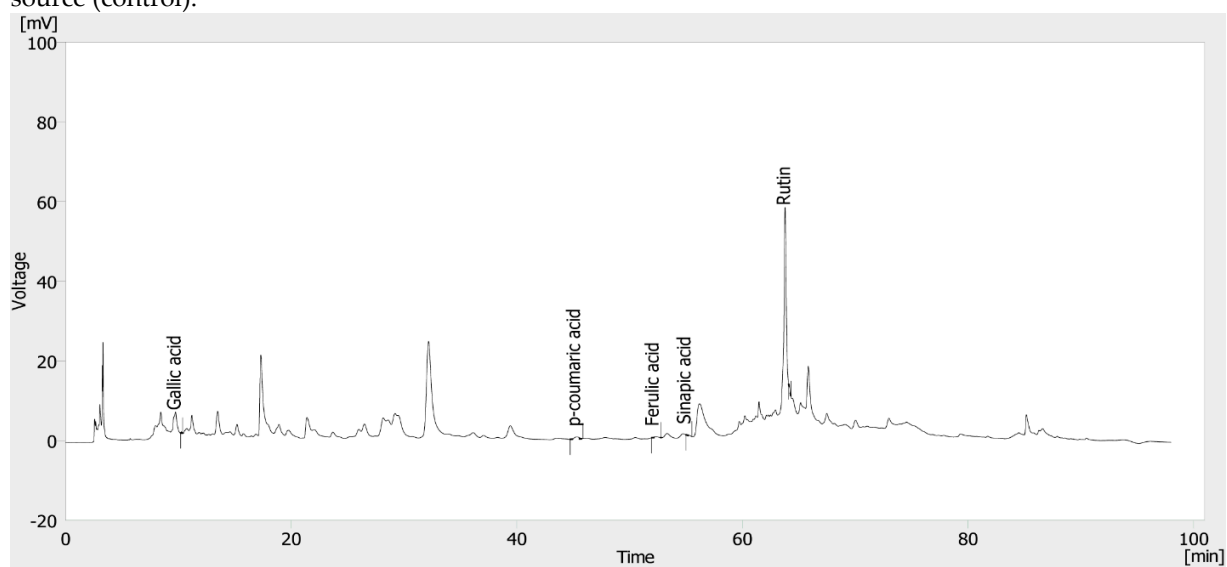


Figure S4. HPLC chromatogram of phenolic compounds from radish sprouts exposed to sucrose.