

Supplementary Figures:

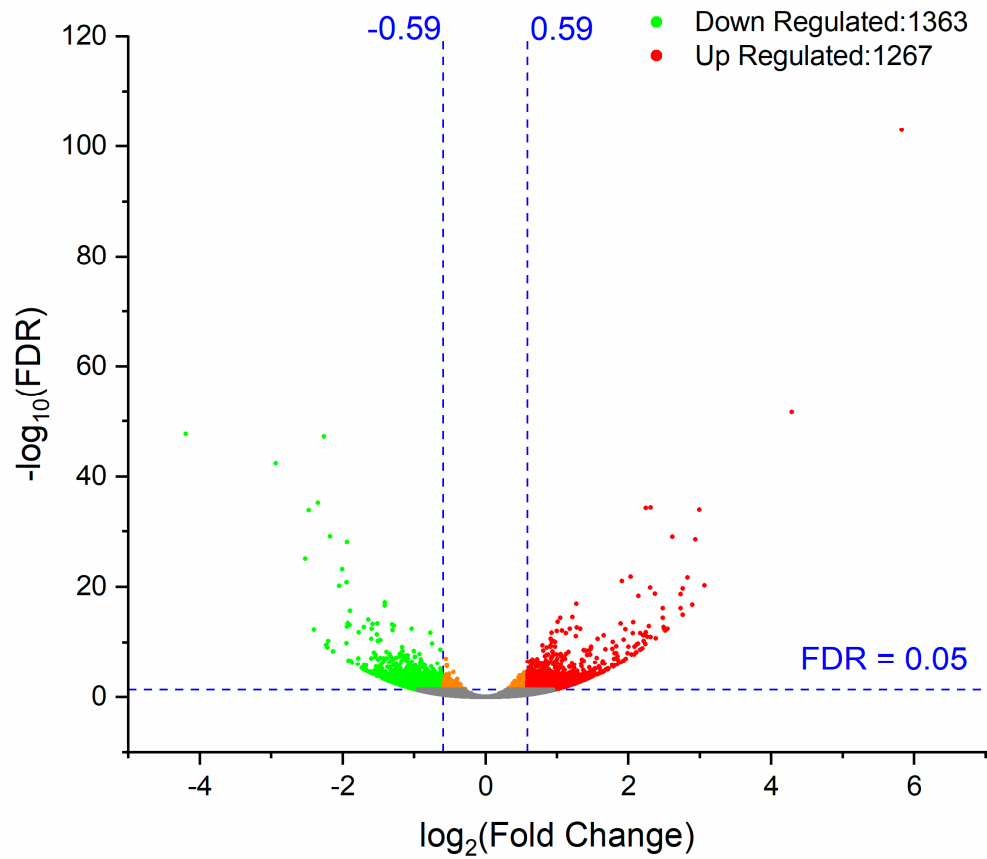


Figure S1. Volcanic map depicting the number of upregulated and downregulated differentially expressed genes between ethephon and water treatments. The screening criteria: unigenes with Fold Change (FC, FPKM in ethylene treatment samples/ FPKM in water treatment samples) ≥ 1.5 and with FDR ≤ 0.05 .

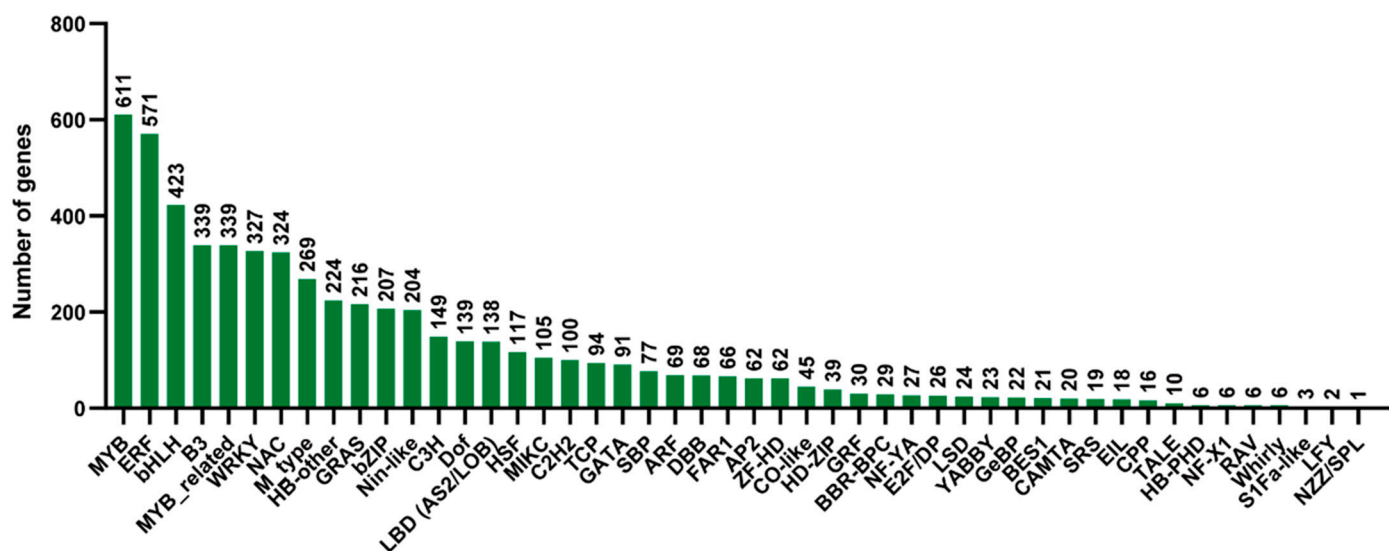


Figure S2. Number of unigenes from different transcription factor families.

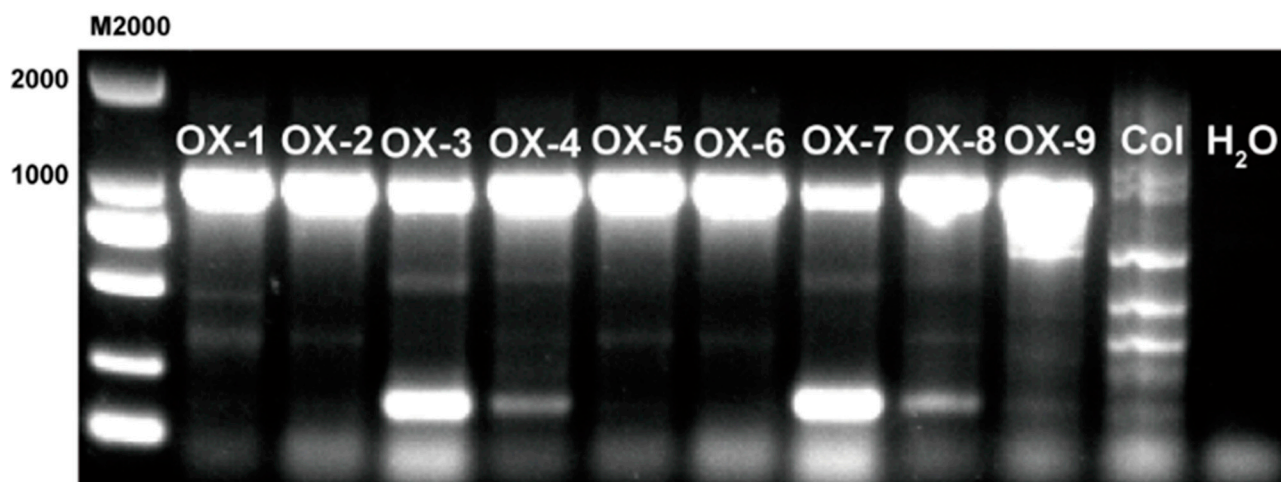


Figure S3. Identification of *CmAFL1* transgenic *Arabidopsis thaliana* at the DNA vel. OX-1 to OX-9: nine independent transgenic lines. Col: wildtype; H₂O: negative control. Primers: *CmAFL1*-F and GFP-R.