



Figure S1. Leaf enlargement and new shoot formation of *L. schweinfurthii* on MS medium supplemented with 1 mgL⁻¹ BA after 7 weeks of culture using leaf explants.

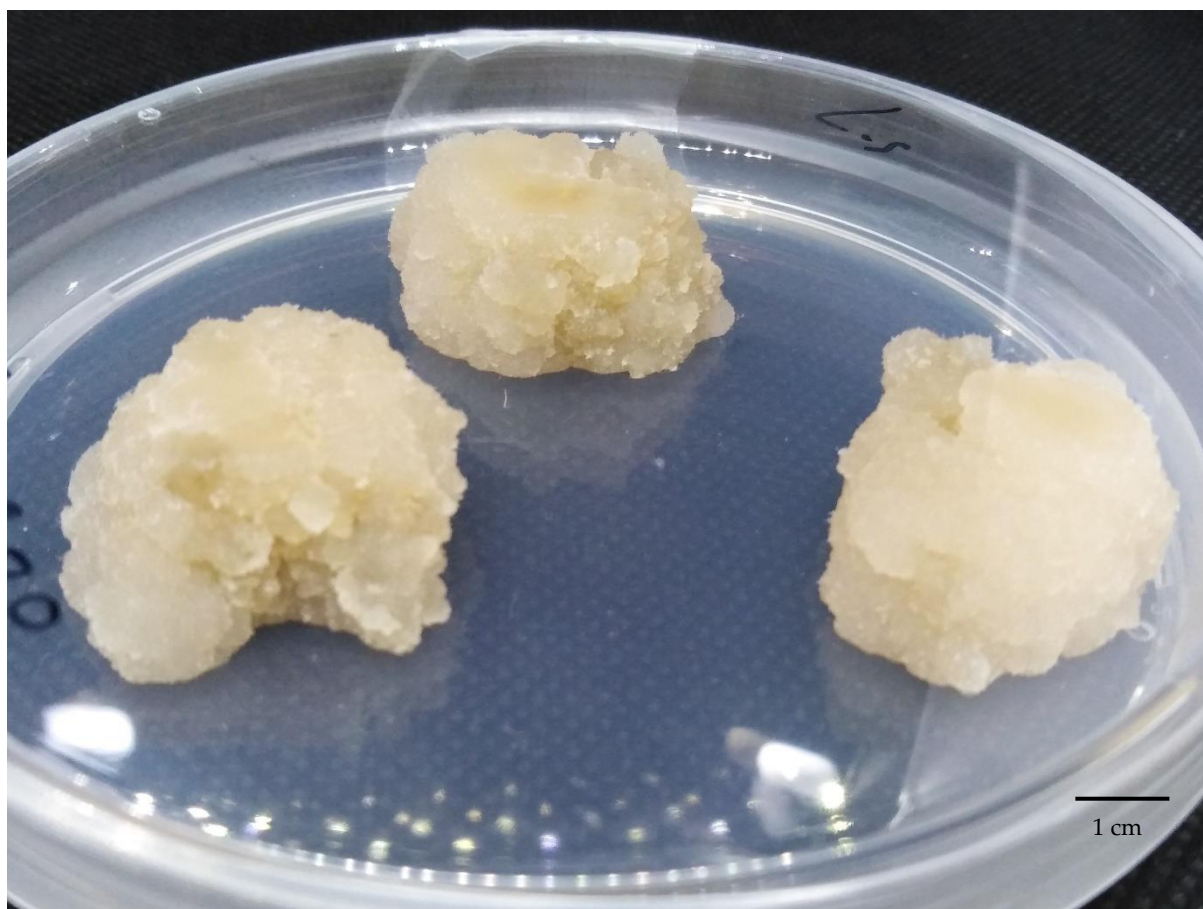


Figure S2. Side view of callus cultures of *L. schweinfurthii* multiplied on MS medium supplemented with 2 mgL⁻¹ NAA.

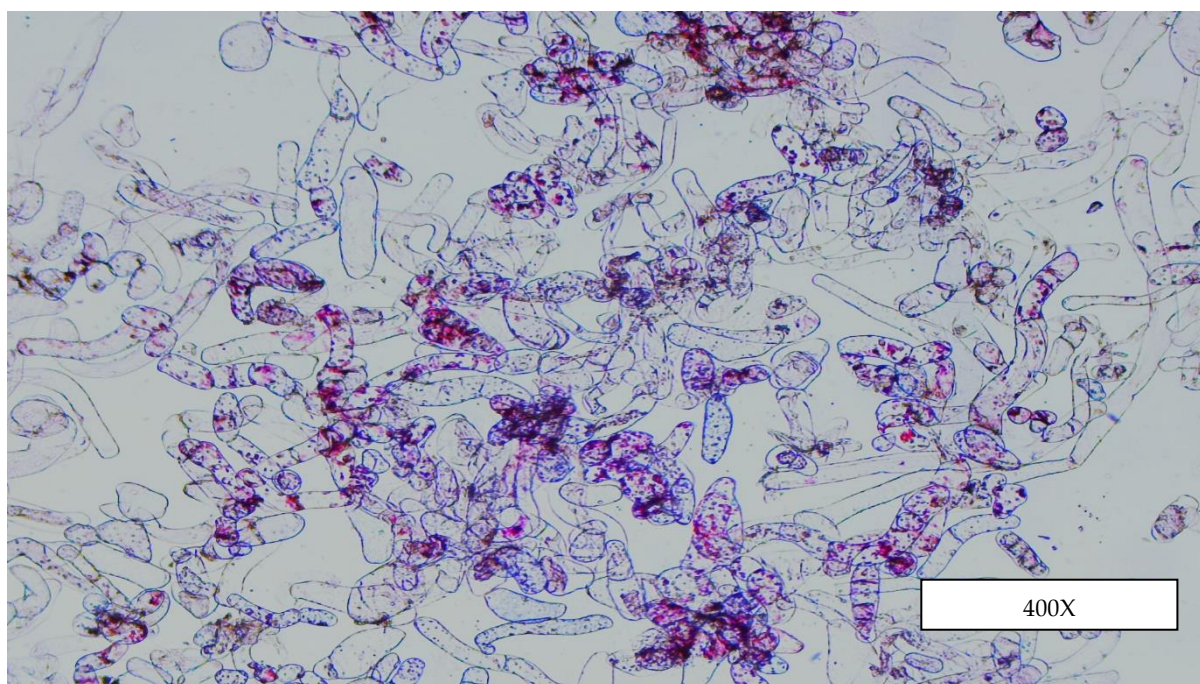


Figure S3. Microscopic examination of *L. schweinfurthii* cell cultures after incubation for 6 hours with 1% TTC (2,3,5-triphenyl tetrazolium chloride) showing the red-violet stained living cells using light microscope.

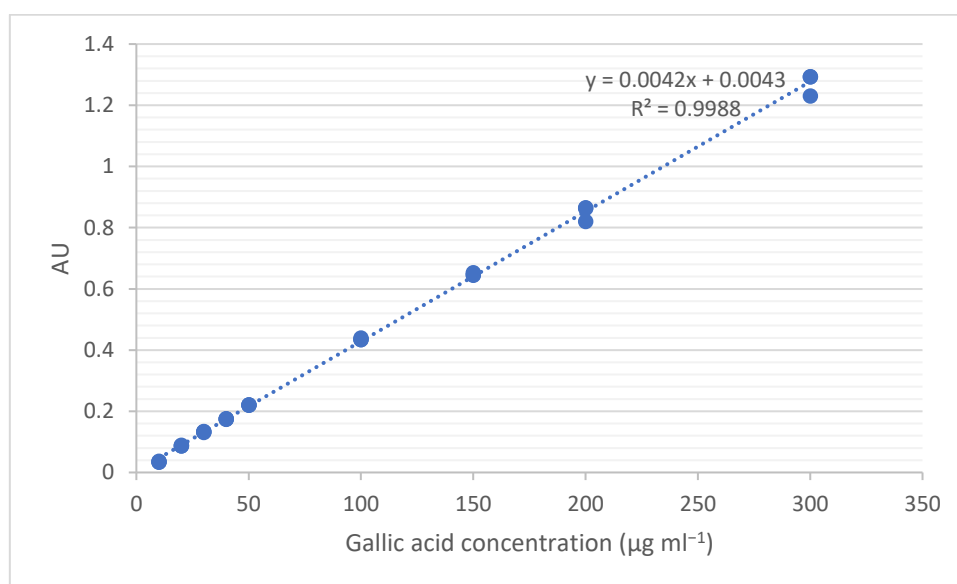


Figure S4. Gallic acid standard curve generated of different concentrations between 10 and 300 µg ml⁻¹ showing the absorbance measurements of 4 replicates at 750 nm measured by Folin-Ciocalteu assay.

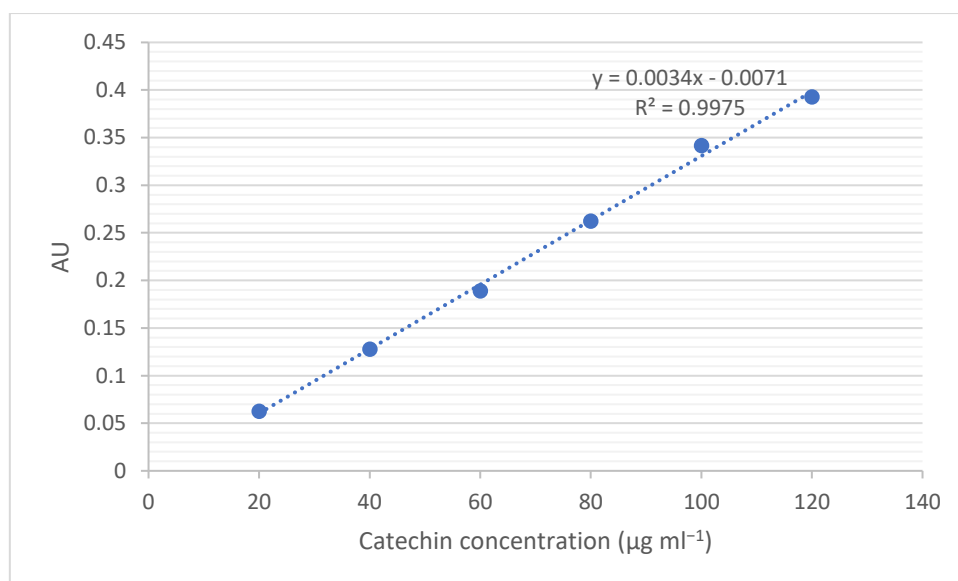


Figure S5. Catechin standard curve generated of different concentrations between 20 and 120 µg ml⁻¹ showing the absorbance measurements of 4 replicates at 510 nm measured by aluminum chloride assay.