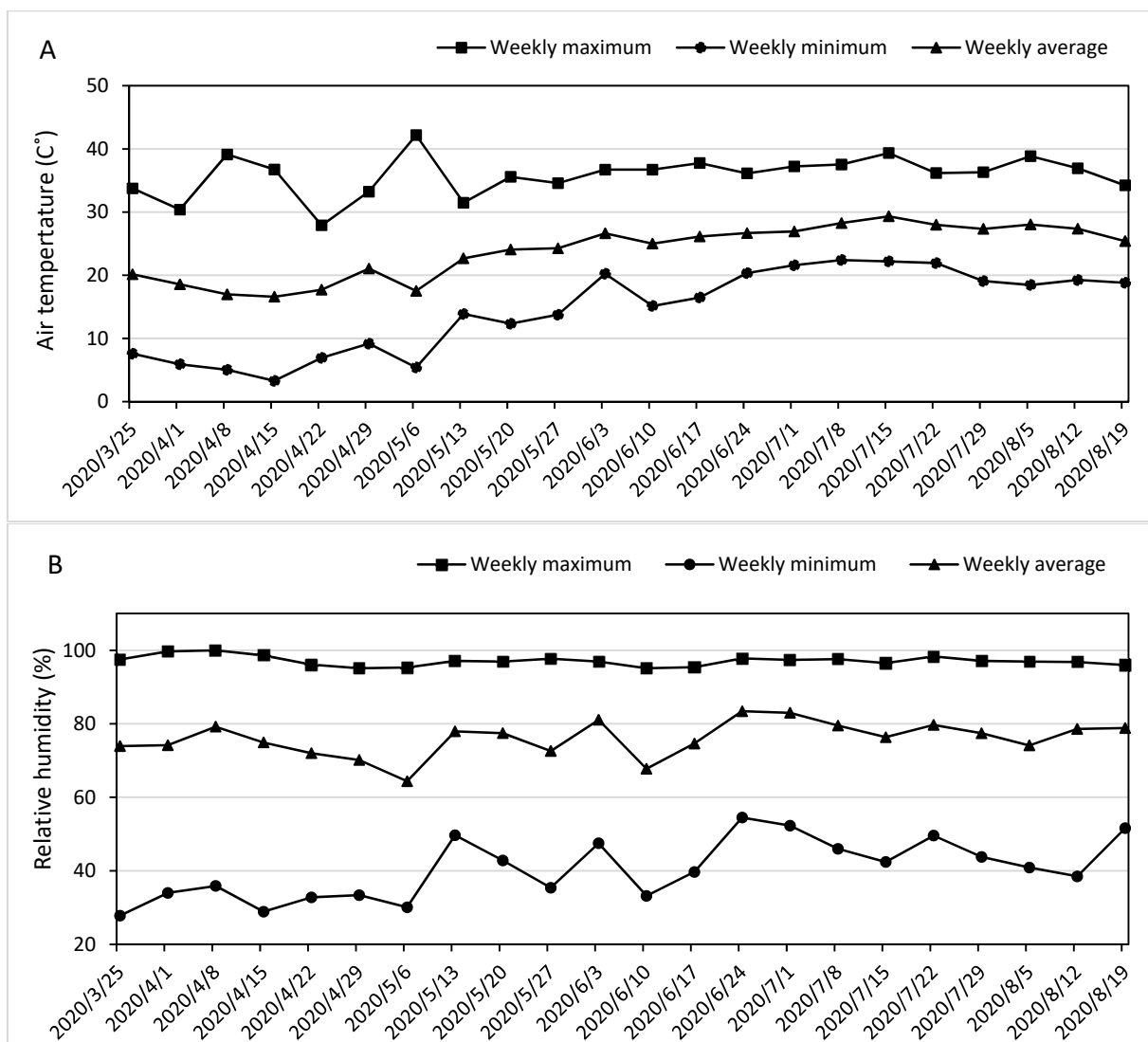


Figure S1. Pictures of tomato plant growth and production setting at 34 DAP (A), 46 DAP (B), and 81 DAP (C) in a high tunnel in Starkville, Mississippi during the 2020 growing season. Six tomato cultivars including ‘Big Beef’, ‘Brandywine’, ‘Early Girl’, ‘Mortgage Lifter’, ‘San Marzano’, and ‘Sun Sugar’ were evaluated. Each cultivar was grafted onto two types of rootstocks ‘Emperor’ and ‘Maxifort’, or grown non-grafted as control.



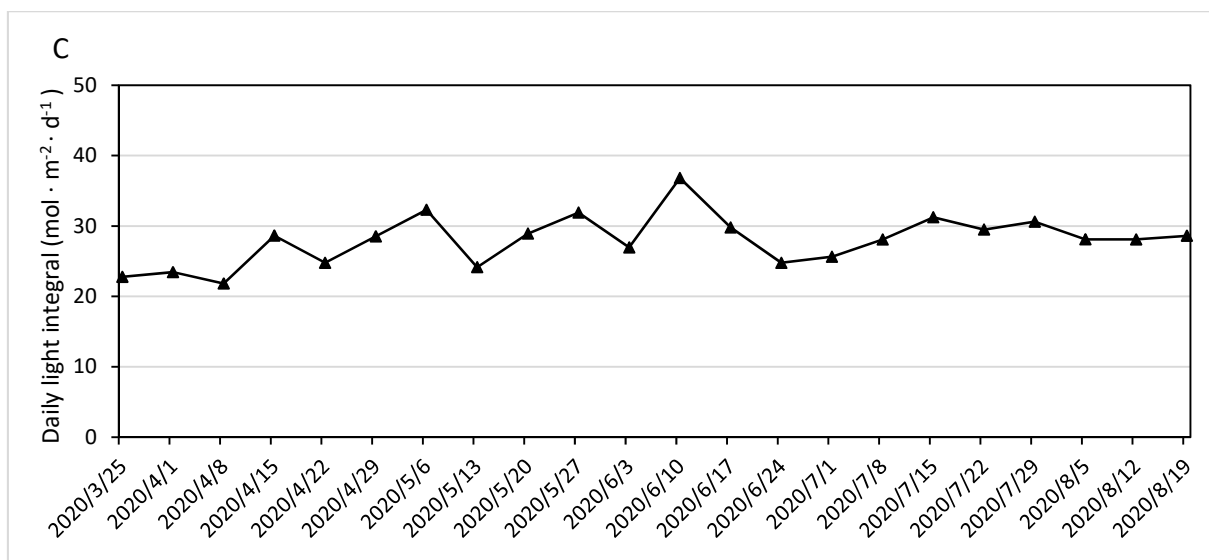


Figure S2. Air temperatures (**A**), relative humidity (**B**), and daily light integral (**C**) in the high tunnel within the experiment durations in Starkville, Mississippi. Air temperature and relative humidity in the high tunnel were recorded by a temperature and relative humidity sensor (HOBO S-THB-M002; Onset Computer Corp.) at one-hour intervals. Photosynthetically active radiation (*PAR*) was recorded by a quantum sensor (HOBO S-LIA-M003; Onset Computer Corp.) at one-hour intervals. All sensors were connected to a data logger (HOBO Micro Station H21-002; Onset Computer Corp.). Daily light integral was calculated by averaging *PAR* readings during a day and multiplying 0.0864.