

Figure S1. Bacterial isolation using a selective medium for *E. coli* O157 by plating on CT-SMAC agar with supplement. The colorless colonies on the plate are presumptive positive *E. coli* O157. A total of 10 colonies from each sample were confirmed for the presence of *stx1* gene using colony PCR.

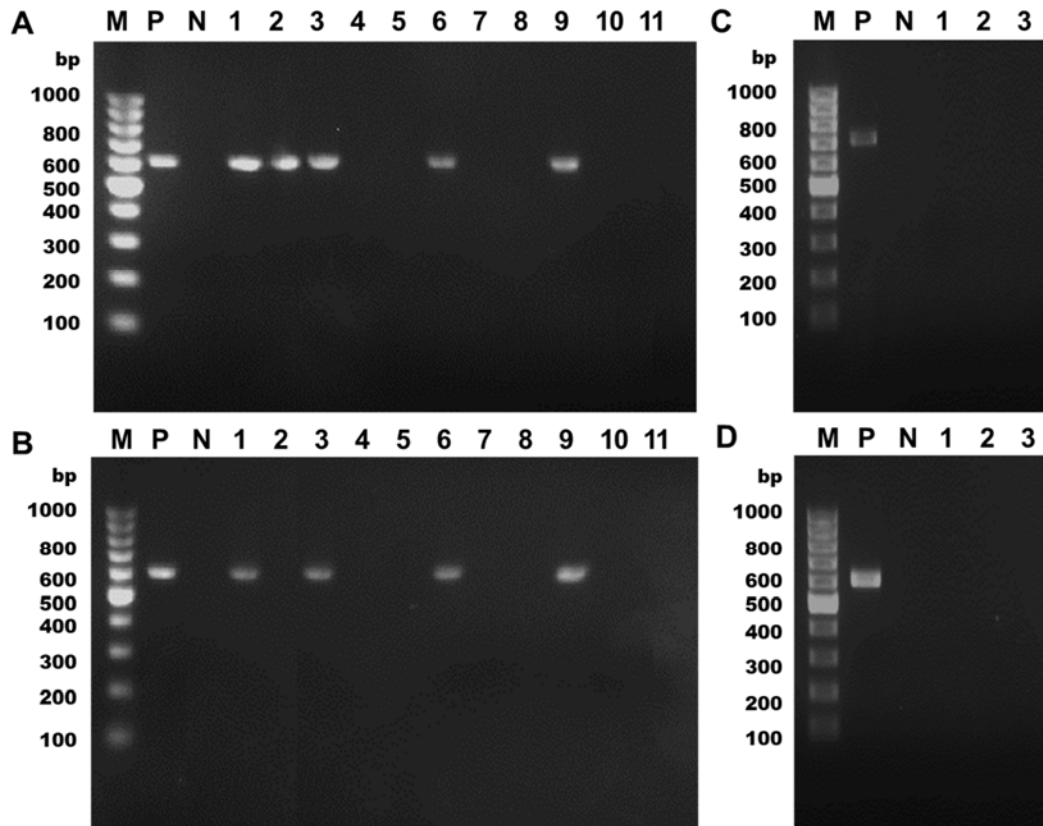


Figure S2. Colony PCR of selected colonies of (A) STEC in aquaponics and (B) STEC in hydroponics. M: 100bp Marker, P: Positive control (*E. coli* O157:H7), N: Negative control (H₂O), 1: Recycled water, 2: Fish feces, 3: Lettuce root surface, 4: Lettuce internal roots, 5: Lettuce leaves, 6: Basil root surface, 7: Basil internal roots, 8: Basil leaves, 9: Tomato root surface, 10: Tomato internal roots, and 11: Tomato leaves; Colony PCR of selected colonies of (C) *L. monocytogenes* and (D) *Salmonella* spp. in aquaponics and hydroponics. M: 100bp Marker, P: Positive control (*L. monocytogenes* or *Salmonella*), N: Negative control (H₂O), 1: Recycled water in aquaponics, 2: Recycled water in hydroponics, and 3: Fish feces.