

Supplementary Materials: Mass spectrometry graphs associated with the compounds tentatively identified in the extract of *Alternaria leptinellae* E138.

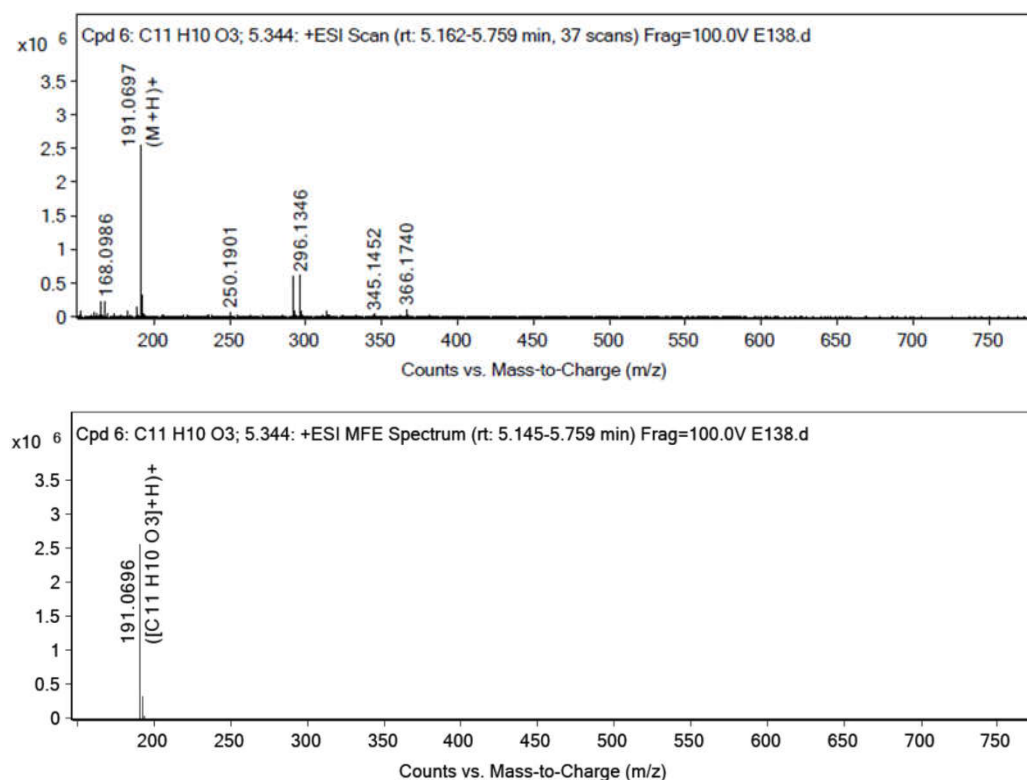


Figure S1. ESI-LC-MS mass spectrum extracted from the liquid chromatogram peak (above) and the extracted ion mass spectrum corresponding to the signal of Altechromone A (according to 51,52) at m/z 191.06 (M+H⁺) (below).

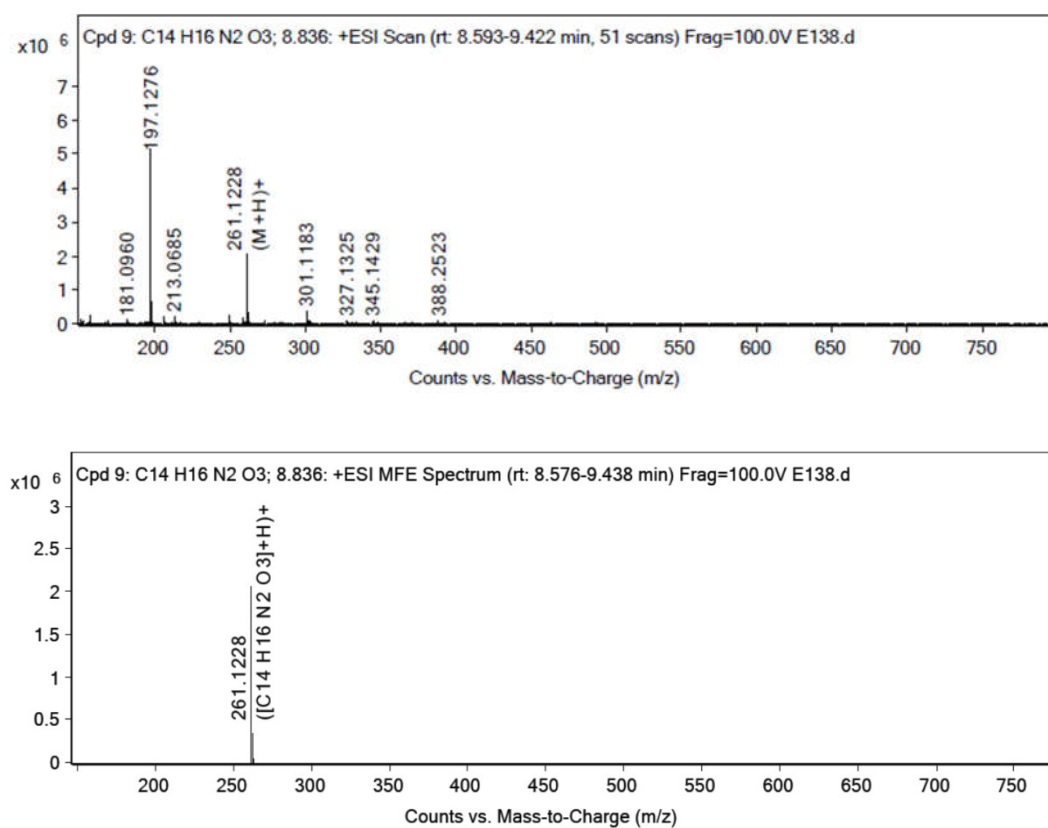


Figure S2. ESI-LC-MS mass spectrum extracted from the liquid chromatogram peak (above) and the extracted ion mass spectrum corresponding to the signal of Maculosin (according to 53) at m/z 261.12 (M+H⁺) (below).

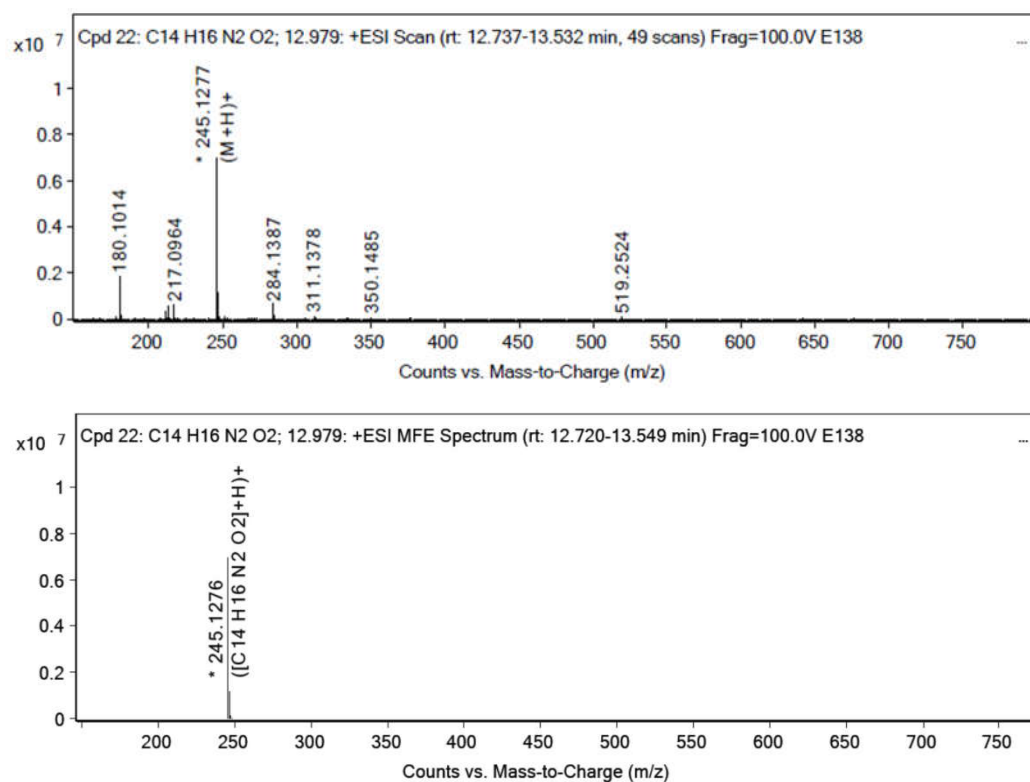


Figure S3. ESI-LC-MS mass spectrum extracted from the liquid chromatogram peak (above) and the extracted ion mass spectrum corresponding to the signal of Ciclo(L-Phe-L-Pro; according to 54) at m/z 245.12 (M+H⁺) (below).

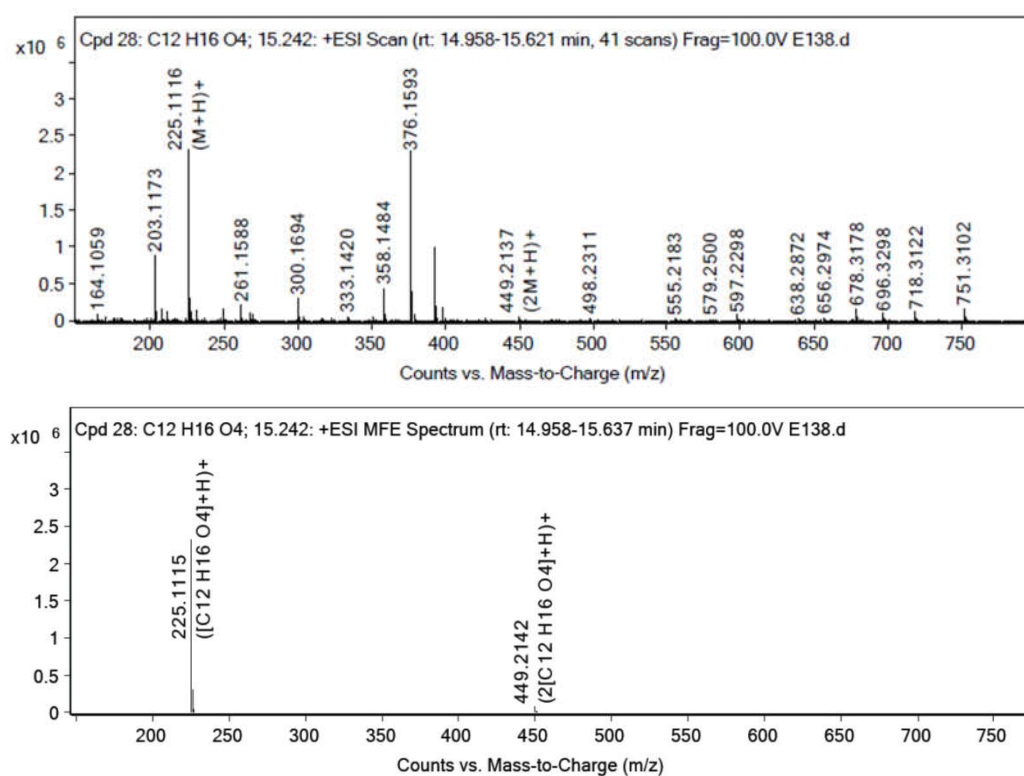


Figure S4. ESI-LC-MS mass spectrum extracted from the liquid chromatogram peak (above) and the extracted ion mass spectrum corresponding to the signal of Phomopsis none A (according to 55,56) at m/z 225.11 (M+H⁺) (below).