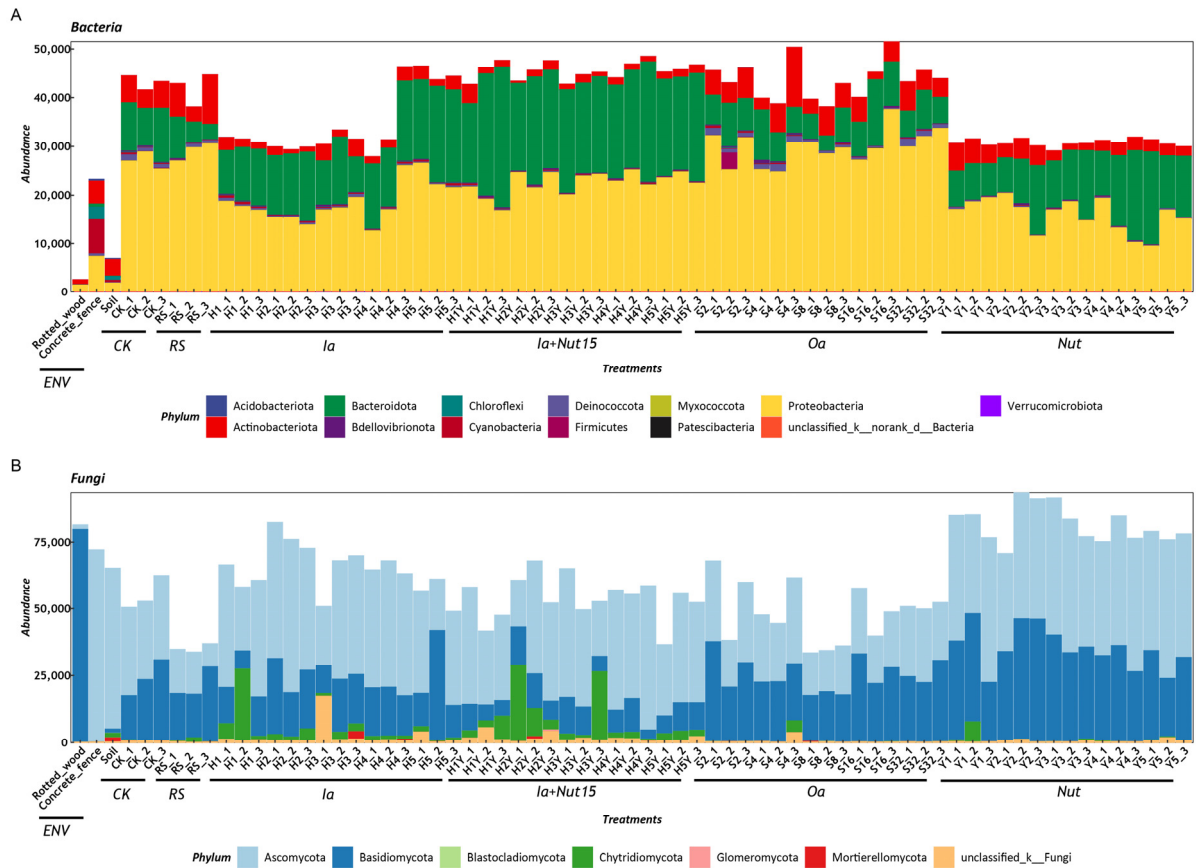
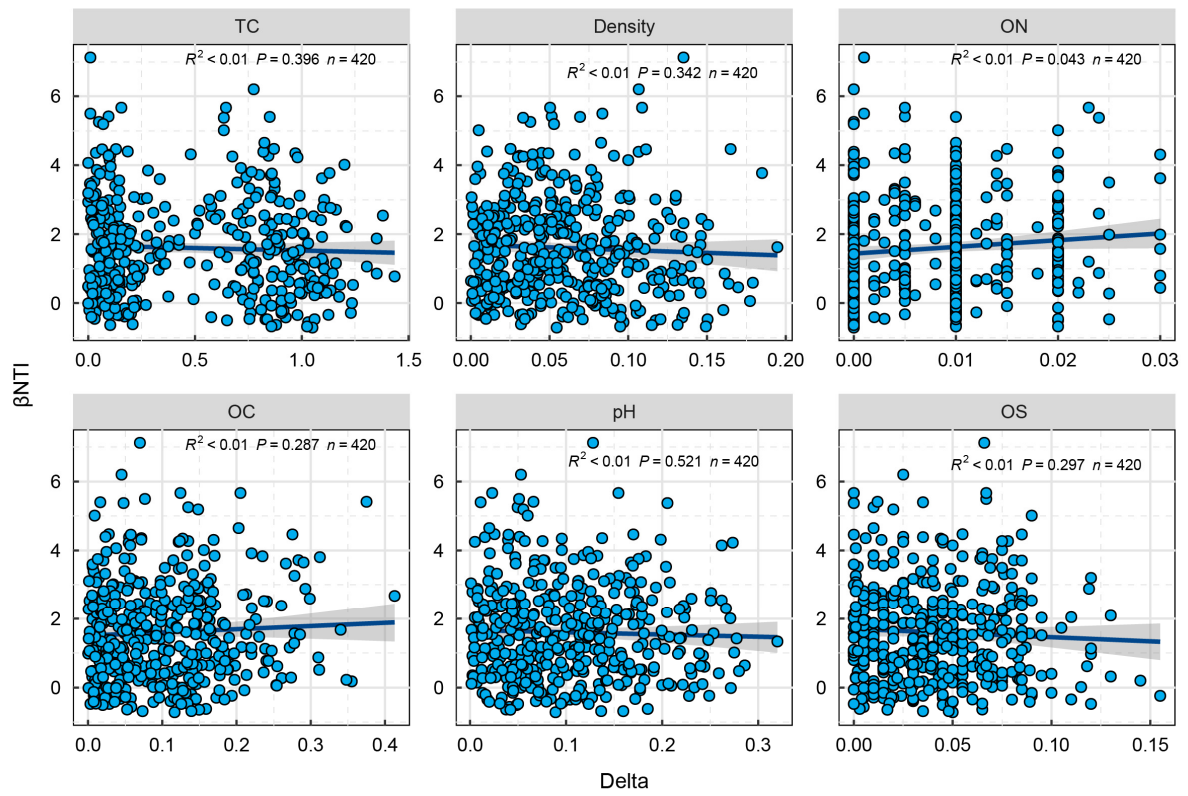




**Figure S1.** Experimental design schematic diagram.



**Figure S2.** Abundance of bacteria and fungi at the phylum level in different habitats (limestone, rotted wood, concrete fence, and surrounding soil).



**Figure S3.** Relative influences of deterministic and stochastic assembly processes on bacterial communities in limestone rocks: Exploring the relationship between  $\beta$ -NTI and variations in environmental factors for fungal communities. Note: the environmental factors examined include total carbon (TC, %), organic nitrogen (ON, %), organic carbon (OC, %), organic sulfur (OS, %), and the bulk density of rock particles (Density, g/cm<sup>3</sup>). The blue lines represent the fitted lines for the differences in environmental factors and  $\beta$ -NTI differentials and the shaded areas around the fitted regression line represent the 95% confidence intervals.