



Figure S1. The colony morphology of some actinomycetes strains

Table S1 The inhibition of actinomycetes against *P. litchii*

Number	Inhibitory diameter(mm)	Number	Inhibitory diameter(mm)
TJSCA-02	3.1	TJATCC-215	1.7
TJSCA-17	12.8	TJATCC-17	4.8
TJSCA-71	17.3	TJATCC-43	6.8
TJSCA-12	4.2	TJATCC-56	7.3
TJSCA-75	8.7	TJSIM-13	9.5
TJGA-82	9.3	TJSIM-26	5.3
TJGA-19	21.4	TJSIM-09	6.7
TJGA-32	3.6	TJSIM-67	8.1
TJGA-66	5.8	BWL-H9	4.5
TJGA-10	2.6	BWL-H1	9.2
TJGA-112	4.9	BWL-H17	8.6
TJHV--17	4.7	BWL-H49	4.8
TJHV--119	1.2	BWL-H31	8.7
		BWL-H52	1.3

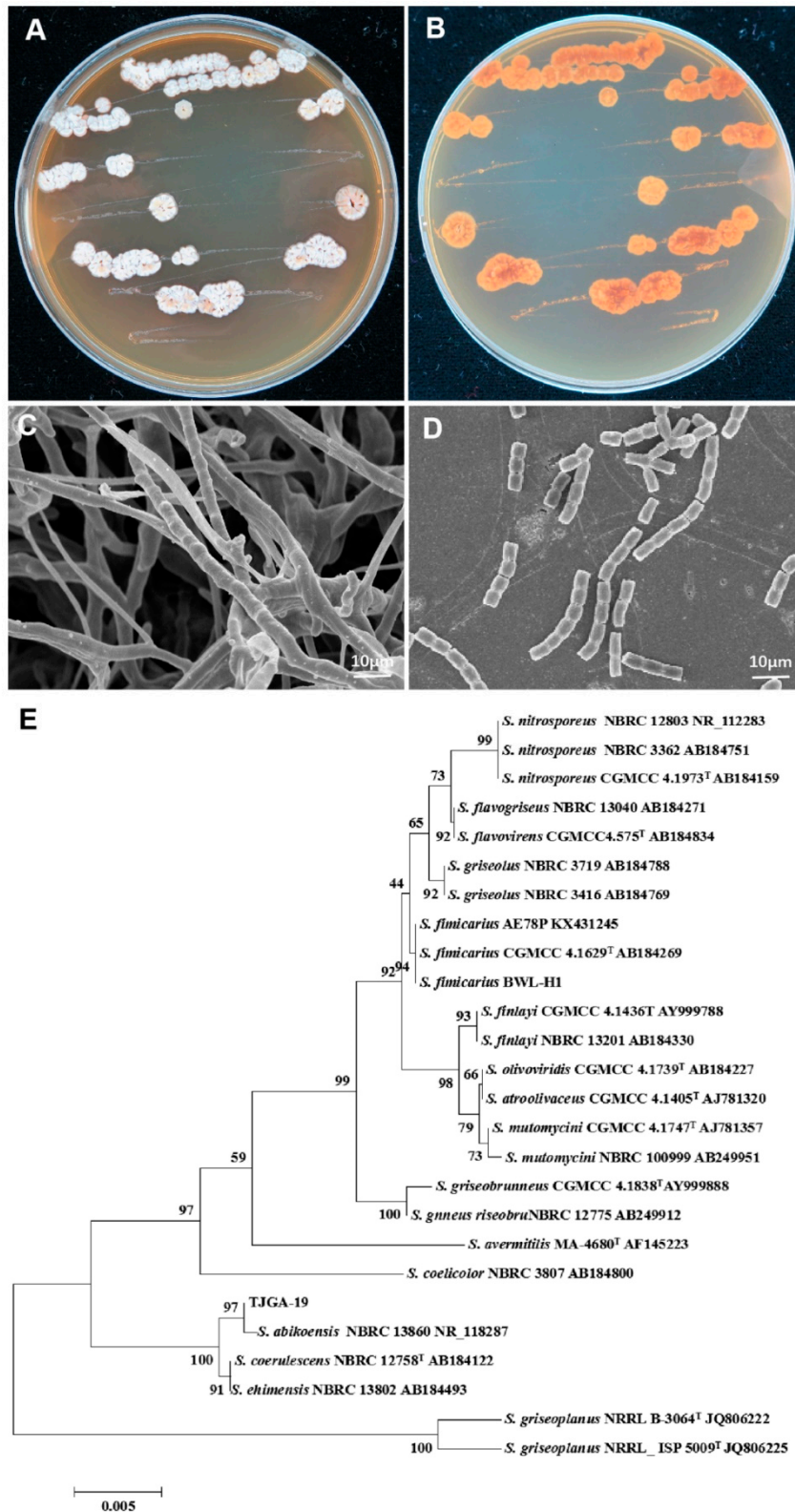


Figure S2. Cultural and morphological characteristics and phylogenetic tree based on 16S rDNA sequences of antagonistic actinomycete strain TJGA-19. (A, B): top and reverse of colony morphology on ISP2 medium; (C, D): aerial mycelium and spores were observed by scanning electron microscopy; (E): phylogenetic tree for strain TJGA-19 based on 16S rDNA sequences analysis and constructed using the neighbor-joining method .