



Supplemental File

L. casei and *L. kefir* identification.

B2 identification

BLAST identification resulted in three possible species present in Table S1.

Table S1. B2—16S RNA sequence and BLAST identification results.

2-antigen	agtggcgaactggtagtaacacgtgggtaacct gcccttgaagtaggggataacacttgaaacaggt gctaataccgtataacaacaaaaccacatggttt ggtttaaagatggctcggctatcactttaggatg gacccgcggcgattagctgttgtaaggtaatg gcctaccaaggcaatgatacgtagccgacctgag agggtaatcgccacattgggactgagacacggc ccaaactcctacgggaggcagcagtagggaatct tcacaatggacgaaagtctgatggagcaacgcc gcgtgagtgatgaagggttcggctcgtaaaactct gttgggagaagaacaggtgtcagagtaactgtt gacatcttgacggtatccaaccagaaagccacgg ctaactacgtgccagcagccggttaatacgtag gtggcaagcgtgtccgattattggcgtaaaag cgagcgcaggggttcttaggtctgatgtgaaag ccttcggcttaaccggagaagtgcacggaacca ggagacttgagtgcagaagaggacagtggaactc catgtgtagcgggtgaaatgcgtagatatatggaag aacaccagtggcgaaggcggtgtctggtctgta actgacgclgagg	MH549130. 1	<i>Lactobacillus kefiri</i>	100
		KT887245. 1	<i>Lactobacillus sunkii</i>	100
		KP763889. 1	<i>Lactobacillus helveticus</i>	100

However, phylogenetic analysis has placed B2 in the same branch as *Lactobacillus kefir* (Figure S1).

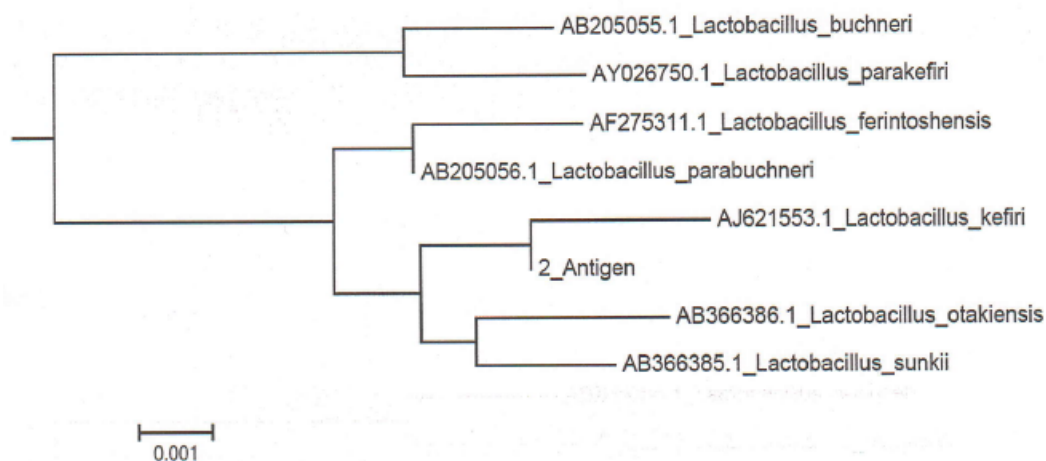


Figure S1. B2 (2_antigen) location on phylogenetic tree.

B7 Identification

BLAST identification resulted in three possible species present in Table S2

Table S2. B7—16S RNA sequence and BLAST identification results.

7-antigen	tgcttgaccgagattcaacatggaacgagtggcg gacgggtgagtaacacgtgggtaacctgccctaa gtgggggataacatttggaaacagatgctaatacc gcatagatccaagaaccgcatggtcttggctgaa agatggcgtaagctatcgcttttgatggaccgc ggcgtattagctagttggtgagtaacggctcacc aaggcgatgatacgtagccgaactgagaggtga tcggccacattgggactgagacacggccaaact cctacggggaggcagcagtagggaatctccaaa tggacgcaagtctgatggagcaacgccgctgag tgaagaaggcttctgggtcgtaaaactctgtgtg gagaagaatggtcggcagagtaactgtgtcggc gtgacggtatccaaccagaaagccacggctaact acgtgccagcagccggtatactaggtggca agcgttatccggattatttggcgtaaacgagcg caggcggtttttaagtctgatgtgaaagccctcg cttaaccgaggaagcgcatcggaactgggaaac ttgagtgcagaagaggacagtggaaacctatgt agcgggtgaaatgcgtagatatatggaagaacacc agtggcgaaaggcggtgtctgtgtgtaac	CP029686.1	<i>Lactobacillus paracasei</i>	100
		JN188389.1	<i>Lactobacillus casei</i>	100
		MH100902.1	<i>Lactobacillus fermentum</i>	99

Phylogenetic analysis has placed B7 in the same branch as *Lactobacillus casei/paracasei* (Figure S2). The limited discriminatory ability of the 16S RNA gene does not allow for the differentiation of these species.

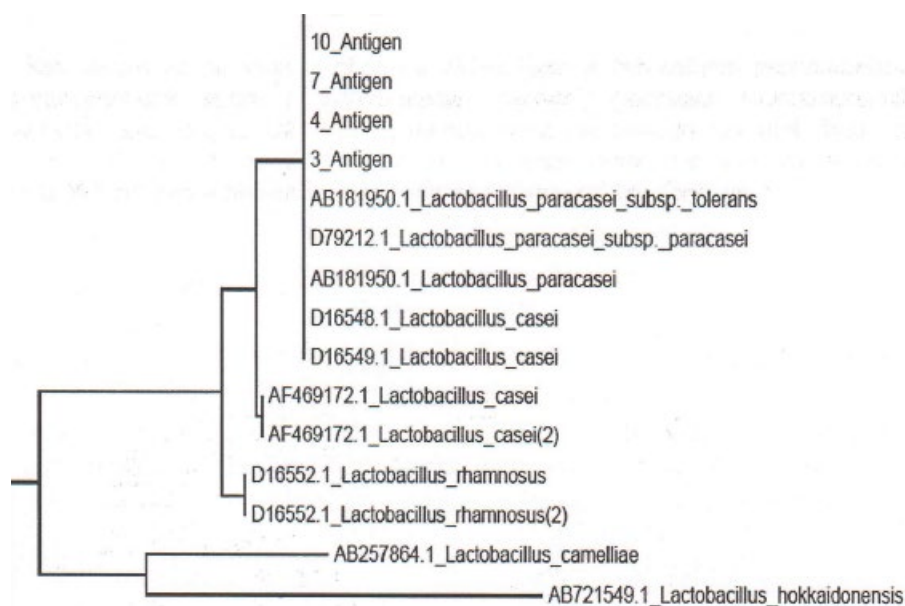


Figure S2. B7 (7_antigen) location on phylogenetic tree.