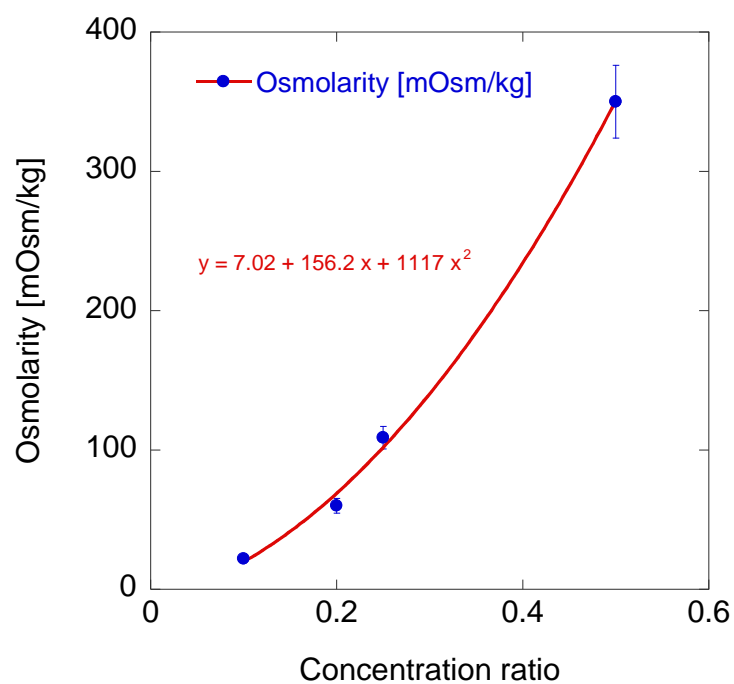
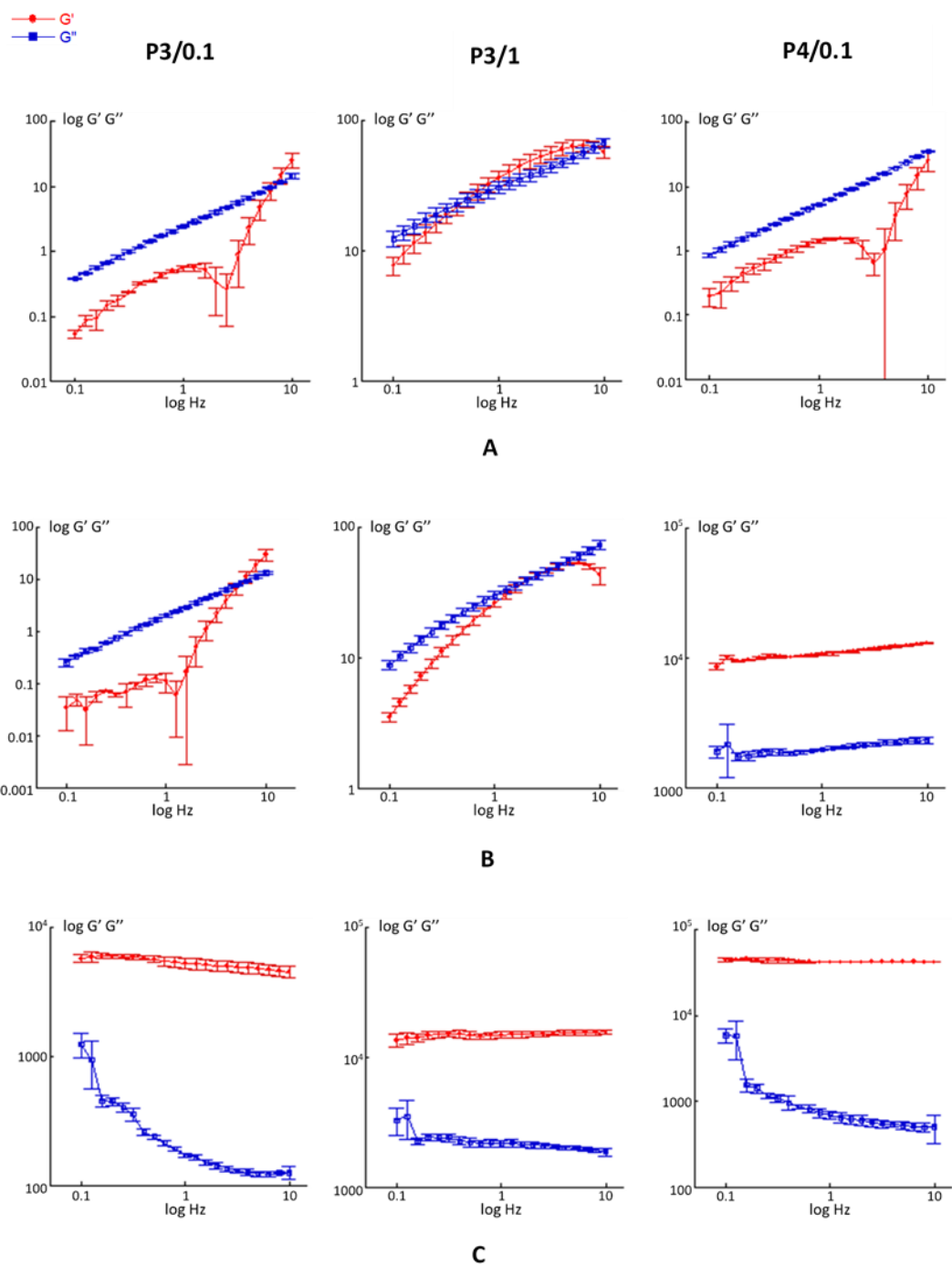


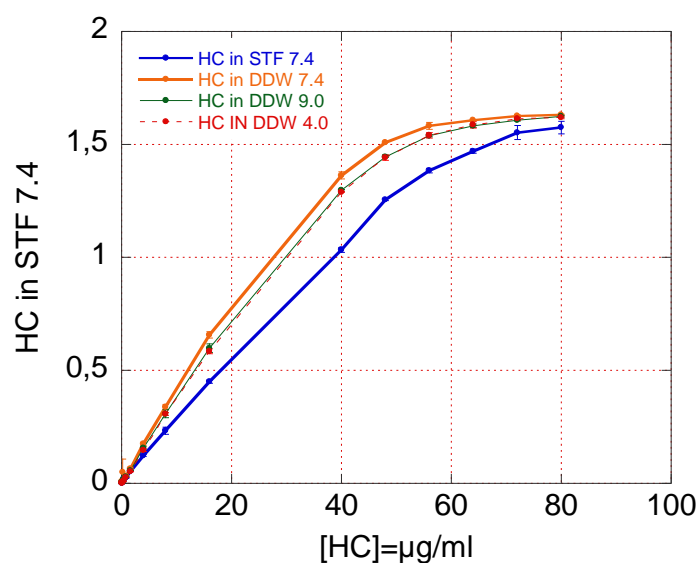
## Supplementary information



**Figure S1.** Measured values of osmolarity at 1:1, 1:4, 1:5 and 1:10 dilutions. The values are basically the same irrespective of the HA presence.



**Figure S2.** Mechanical spectra of pol/HA platforms loaded with HC at three different temperature 4 °C (A), 25°C (B) and 37°C (C).



**Figure S3.** Absorbance vs. HC concentration curves at room temperature.

**Table S1.** Slopes of the calibration curves in the linear region of Figure S3.

Calibration curves parameters				
	STF 7.4	pH 4.0	pH7.4	pH 9.0
Equation	$y = 27.993 + 0.0052x$	$y = 37.1165x - 0.0032$	$y = 41.287x + 0.0011$	$y = 37.559x + 0.0006$
Slope	27.993	37.1165	41.827	37.559
Standard error	0.004704	0.00677	0.00543	0.00494
R <sup>2</sup>	0.9993	0.9992	0.9996	0.9996
LOD	0.0005 mg/ml	0.0006 mg/ml	0.00043 mg/ml	0.00043 mg/ml
LOQ	0.00168 mg/ml	0.00183 mg/ml	0.00131 mg/ml	0.00132 mg/ml

LOD = limit of detection

LOQ= limit of quantification



**Figure S4.** Built-in beaker specifically designed for release tests from thermosensitive hydrogels. (A) Interior of the beaker seen from above; (B) Example of a beaker containing the sample and the release medium (STF), along with the removable lid.