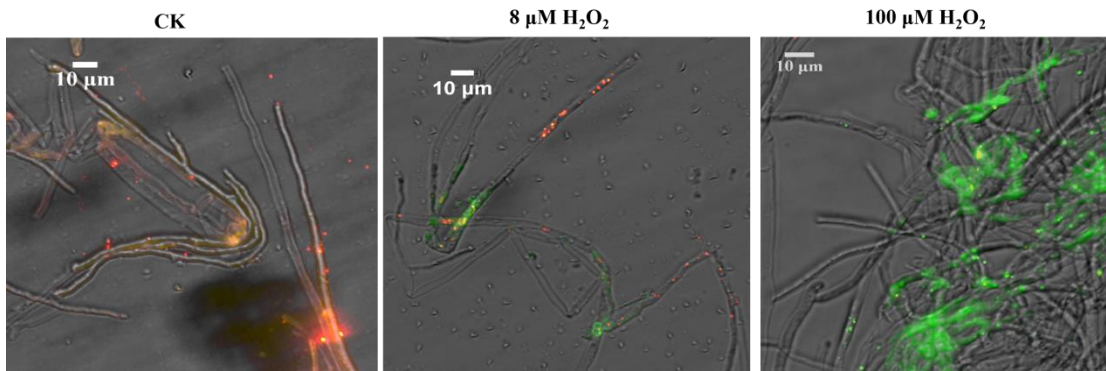
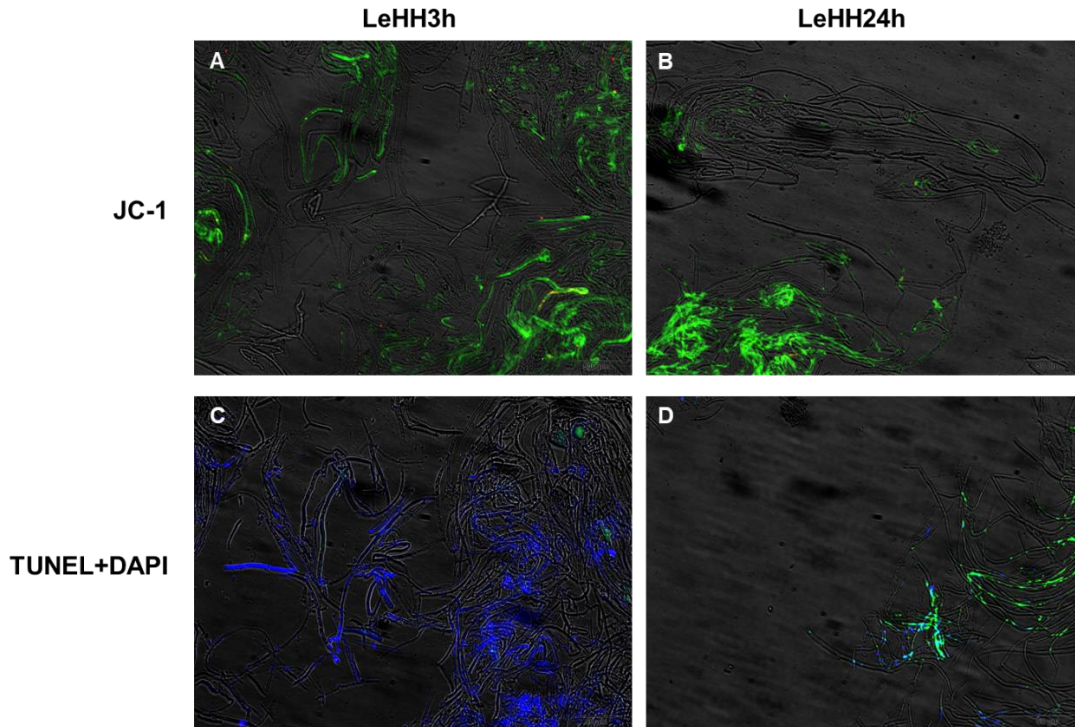


## Supplemental Material



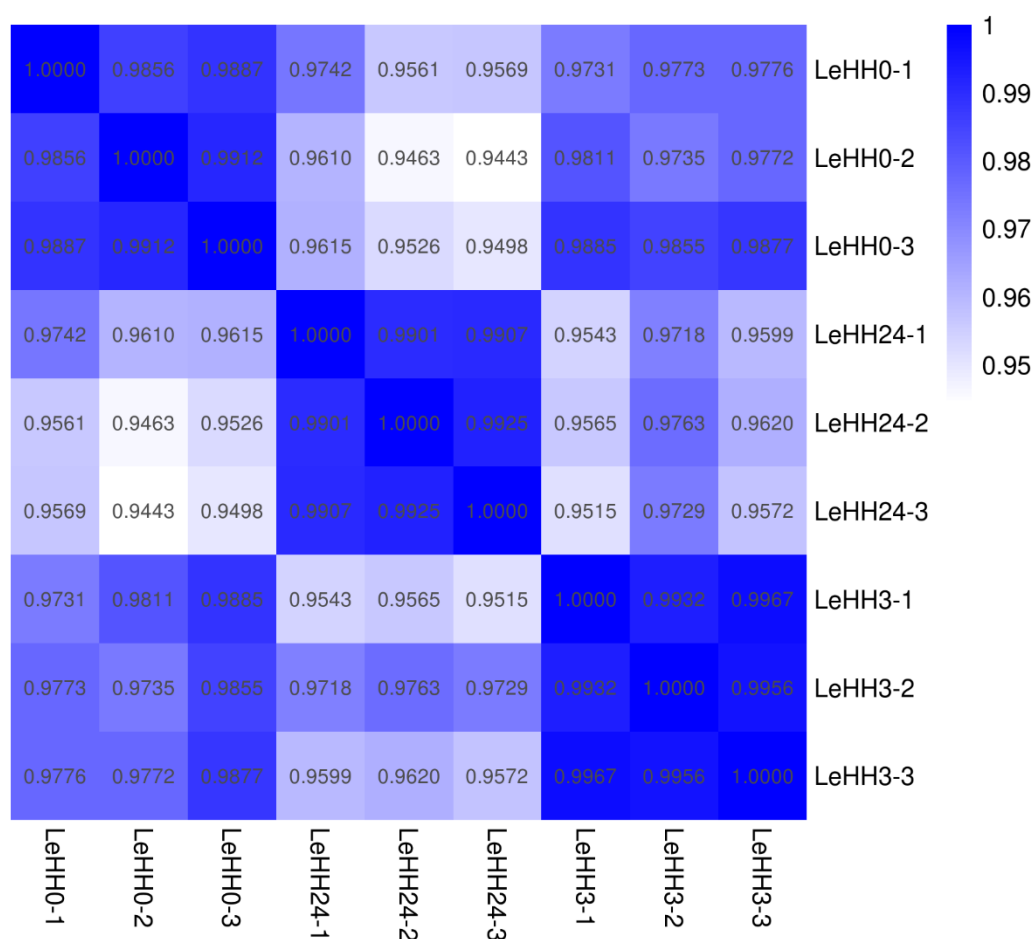
**Figure S1 JC-1 staining of mycelia treated with 0, 8, or 100  $\mu\text{M}$   $\text{H}_2\text{O}_2$ .**

Red fluorescence indicates polarised healthy mitochondria, and green fluorescence indicates depolarised mitochondria.

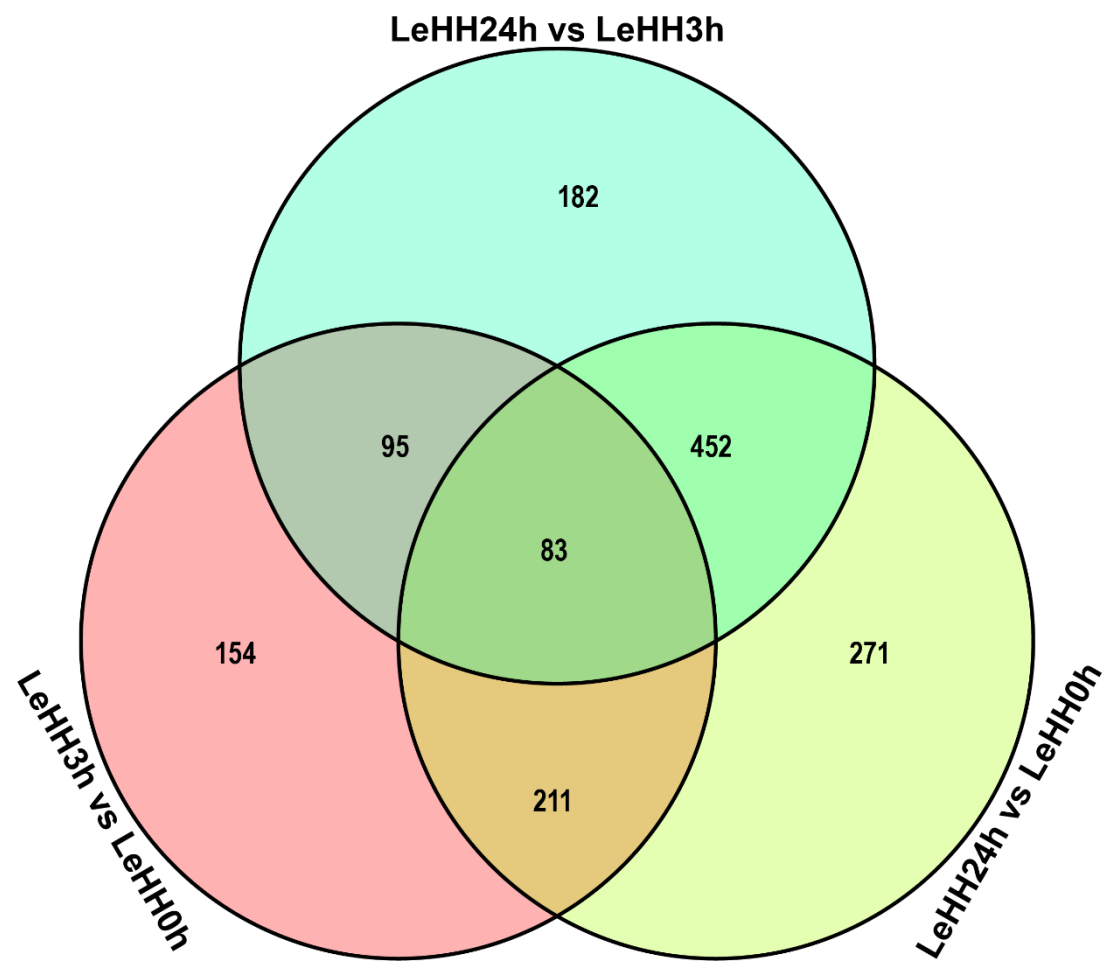


**Figure S2 Subcellular phenotype changes of *Lentinula edodes* mycelia after treated with 100  $\mu\text{M}$   $\text{H}_2\text{O}_2$  for 3h and 24h.**

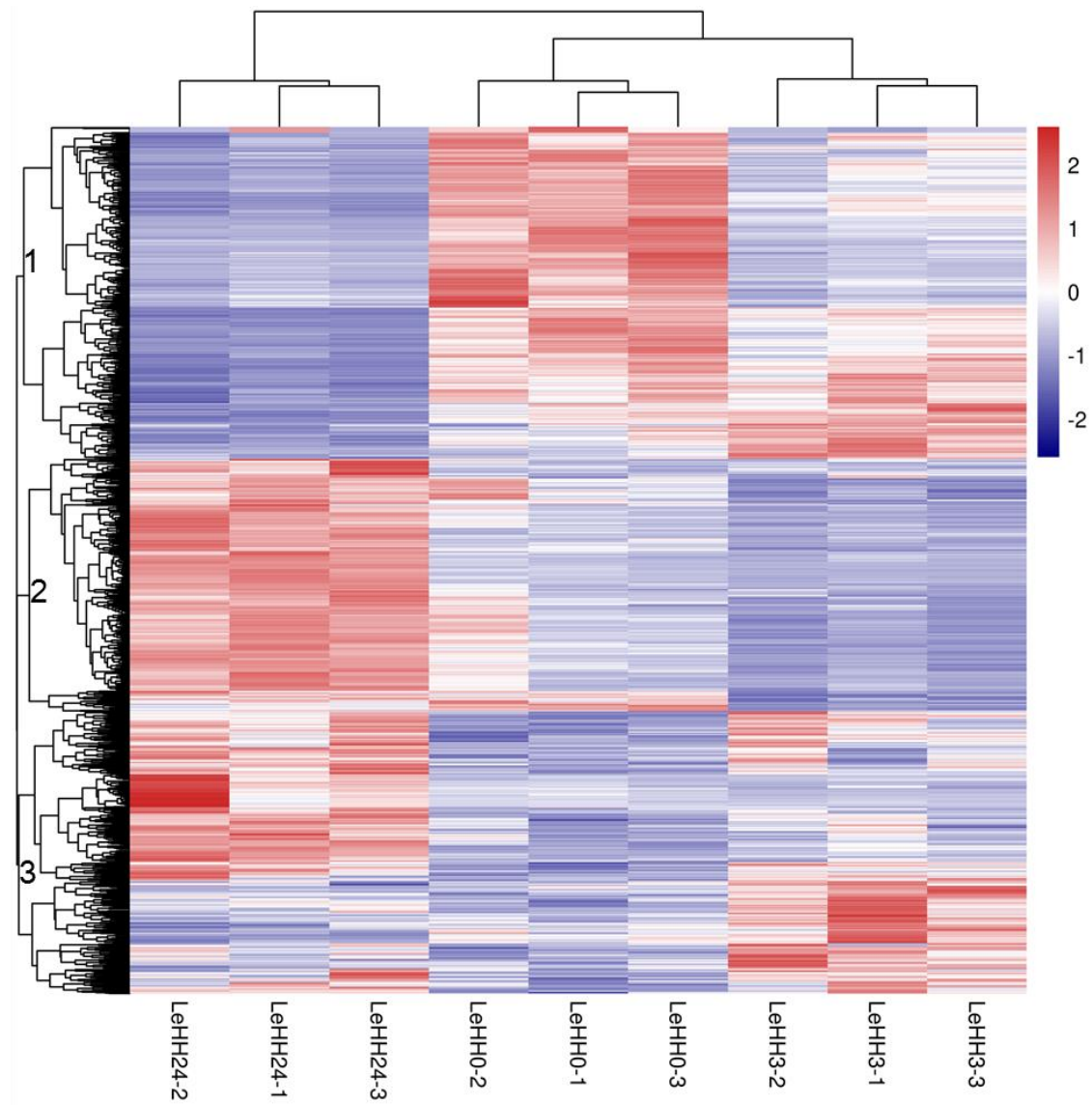
A-B: JC-1 labeled mitochondrial membrane potential changes in mycelia. Red fluorescence indicates polarised healthy mitochondria, and green fluorescence indicates depolarised mitochondria. C-D: The total nuclei and DNA fragments were per-formed by DAPI and TUNEL fluorescence staining. Blue fluorescence showed DAPI-labeled total nuclei. Green fluorescence showed TUNEL-labeled DNA fragments. Bar = 50  $\mu\text{m}$ .



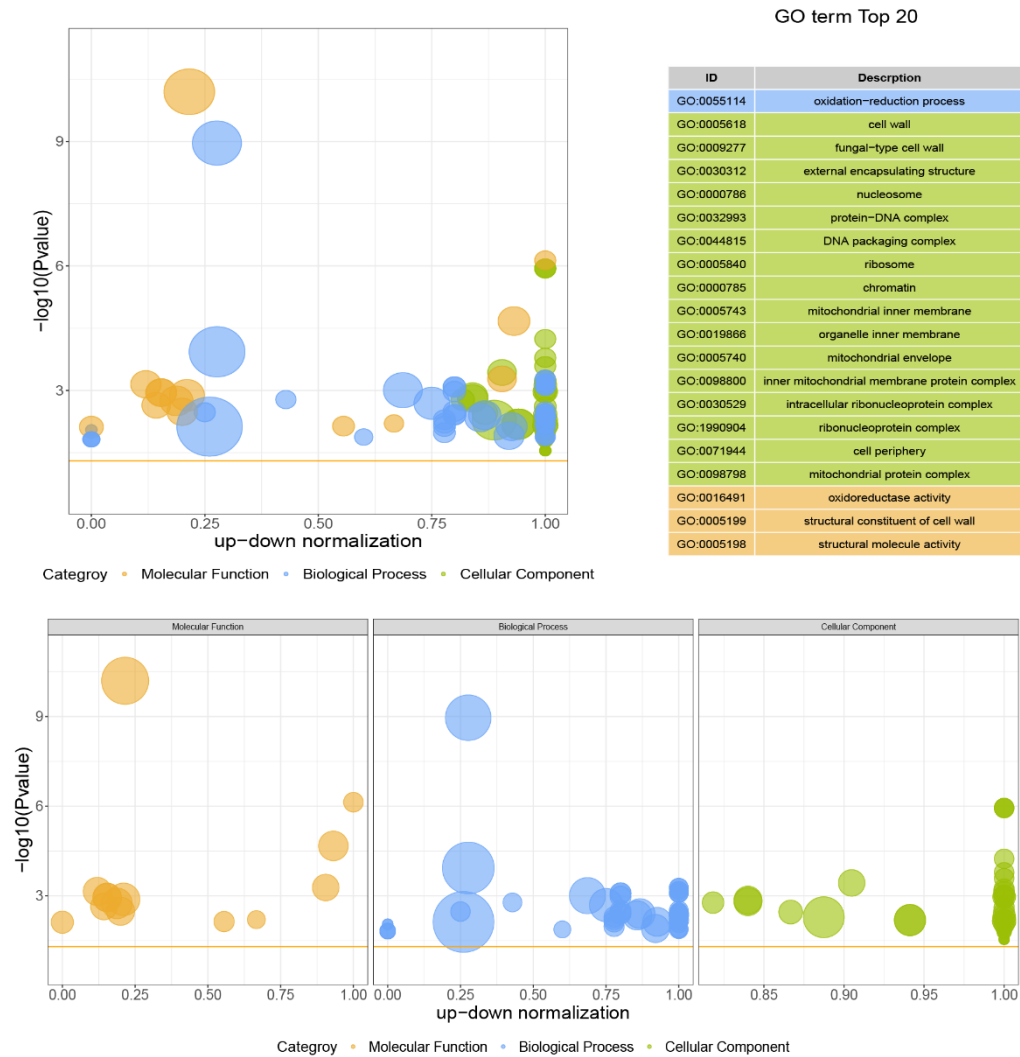
**Figure S3 Pearson correlation value between biological replicates.**



**Figure S4 Venn diagram of DEGs in LeHH3h vs. LeHH0h, LeHH24h vs. LeHH0h, and LeHH24h vs. LeHH3.**

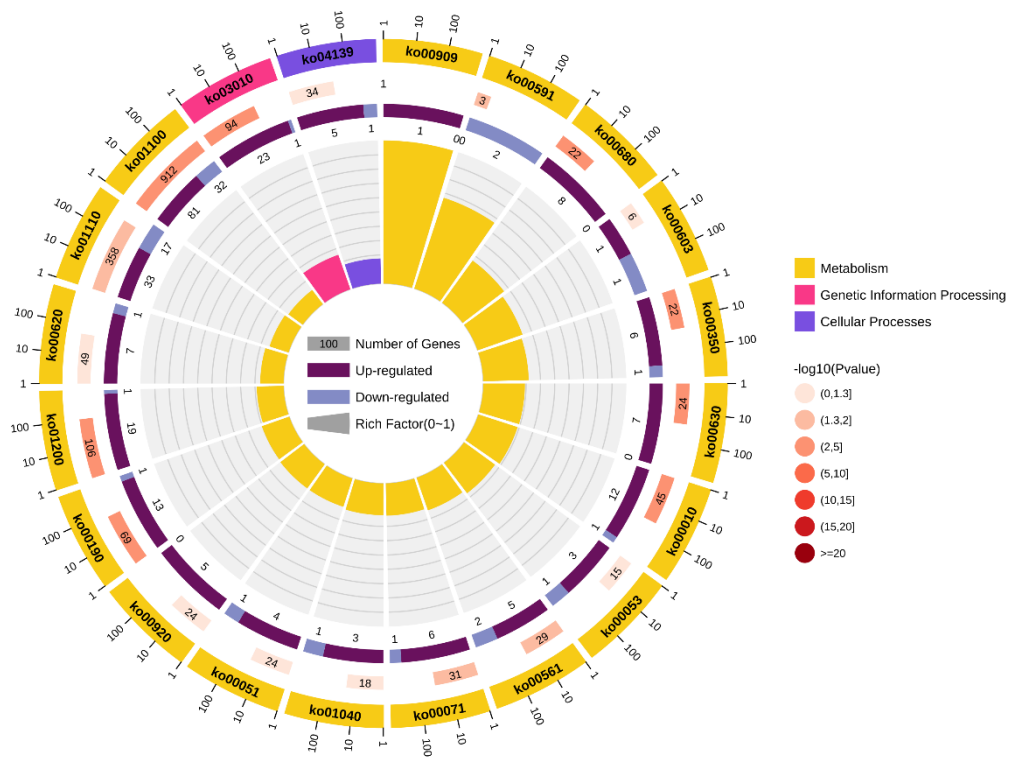


**Figure S5 Hierarchical clustering of all DEGs.** Red indicates genes with up-regulated expression, and blue indicates genes with down-regulated expression.



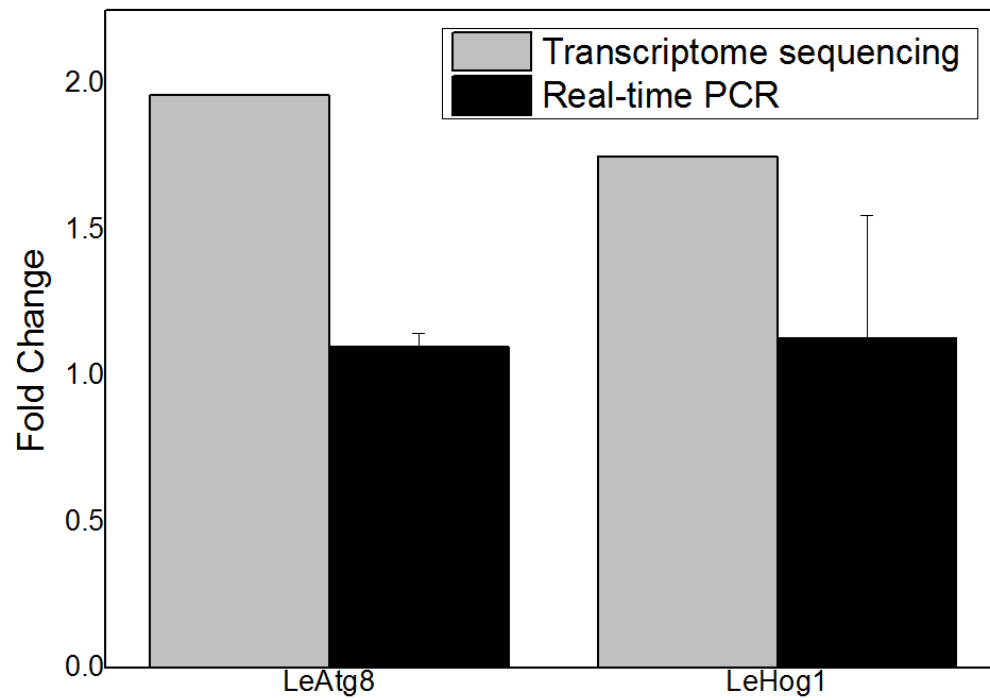
**Figure S6 GO enrichment of DEGs in LeHH24h vs. LeHH0h.**

The above figure uses two forms of bubble charts to show the results of GO enrichment analysis. The ordinate is  $-\log_{10}(\text{Pvalue})$ . The abscissa is the up-down normalization value (the value of up-regulated gene number minus that of down-regulated gene number ratio to all DEGs). GeneCount is represented by the size of the point; the orange line in the figure represents the threshold of  $p = 0.05$ . The right side of a is the list of the top 20 GO terms, and different colours represent different ontologies.



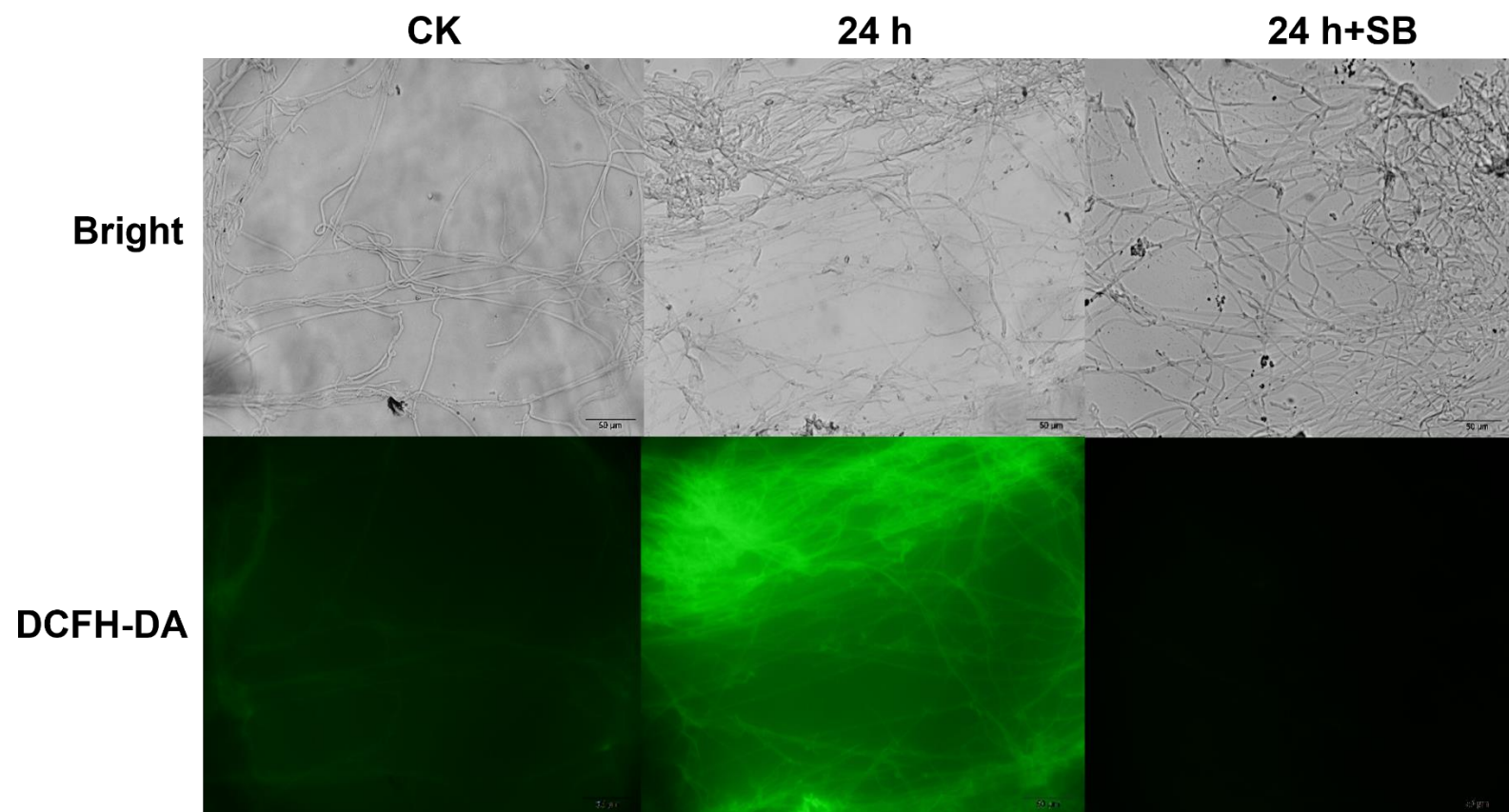
**Figure S7 KEGG enrichment of DEGs in LeHH24h vs. LeHH0h.**

Yellow label indicates metabolism class; magenta label indicates genetic information processing class; purple label indicates cellular process class. The outer ring indicates the top 20 KEGG terms, and the number of genes is indicated on the outer circle. The second ring indicates the number of the genes in the genome background and p-values for the enrichment of syntenic genes for the specified biological process. The third ring indicates the number of up-regulated and down-regulated genes. Red represents the number of up-regulated genes, and blue represents the number of down-regulated genes. The fourth circle indicates the enrichment factor of each KEGG term.



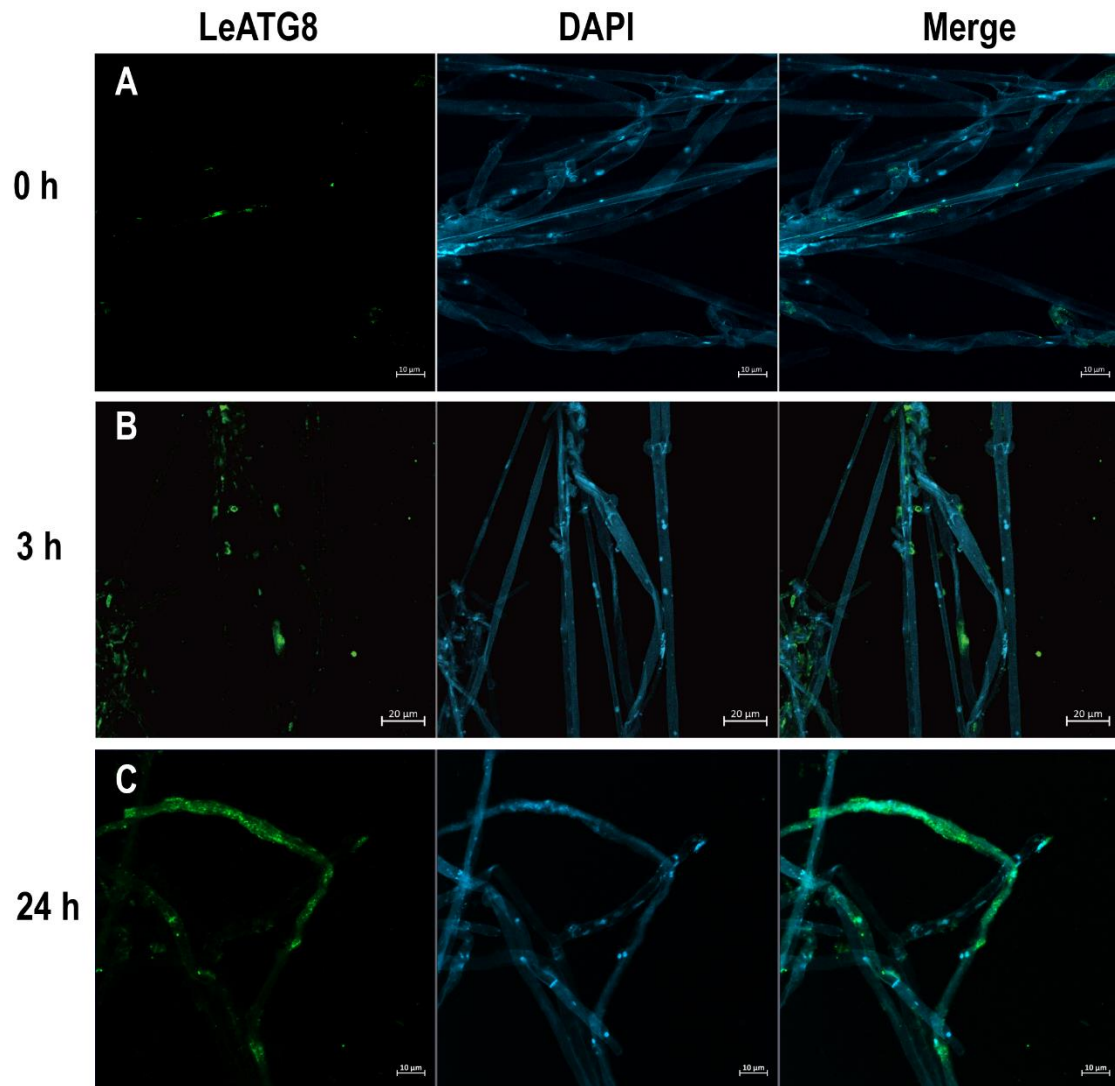
**Figure S8 Validation of the expression of *LeAtg8* and *LeHog1* in LeHH24h vs. LeHH0h using RT-qPCR.**





**Figure S9 DCFH-DA staining marked the reactive oxygen species (ROS) content of hyphae under control, 24 h H<sub>2</sub>O<sub>2</sub> treatment, and 24 h H<sub>2</sub>O<sub>2</sub> inhibition with SB203580.**





**Figure S10 Subcellular localisation of LeATG8 in mycelia treated with 100  $\mu$ M  $H_2O_2$ .**

(A) Immunofluorescence of LeATG8-labelled (green) and DAPI-stained (blue) mycelia after 0 h treatment.

(B) Immunofluorescence of LeATG8-labelled (green) and DAPI-stained (blue) mycelia after 3 h treatment.

(C) Immunofluorescence of LeATG8-labelled (green) and DAPI-stained (blue) mycelia after 24 h treatment.

**Table S1 Data summary of RNA-seq**

<b>sample</b>	<b>raw_reads</b>	<b>clean_reads</b>	<b>clean_bases</b>	<b>error_rate</b>	<b>Q20(%)<sup>a</sup></b>	<b>Q30(%)<sup>b</sup></b>	<b>GC_pct</b>
<b>LeC1_1</b>	43100600	42305864	6.35G	0.02	98.12	94.66	48.76
<b>LeC1_2</b>	46298694	45450024	6.82G	0.02	98.24	94.92	48.5
<b>LeC1_3</b>	45594734	44563200	6.68G	0.02	98.35	95.16	48.5
<b>LeHH3_1</b>	40431926	39402522	5.91G	0.02	98.34	95.14	48.8
<b>LeHH3_2</b>	41019206	39876902	5.98G	0.02	98.62	95.8	48.7
<b>LeHH3_3</b>	42045136	41030946	6.15G	0.02	98.37	95.25	48.85
<b>LeHH24_1</b>	46866462	45408894	6.81G	0.02	98.37	95.16	48.7
<b>LeHH24_2</b>	42659912	41867916	6.28G	0.02	98.15	94.78	48.63
<b>LeHH24_3</b>	45336476	44450514	6.67G	0.02	98.56	95.31	48.53

**Table S2 Summary of clean reads mapped to reference genome**

<b>Sample name</b>	<b>Total reads</b>	<b>Total mapped</b>	<b>Multiple mapped</b>	<b>Uniquely mapped</b>	<b>Read-1</b>	<b>Read-2</b>
<b>LeC1_1</b>	42305864	37620546(88.93%)	36967948(87.38%)	652598(1.54%)	18584919(43.93%)	18383029(43.45%)
<b>LeC1_2</b>	45450024	40309563(88.69%)	39586475(87.1%)	723088(1.59%)	19871732(43.72%)	19714743(43.38%)
<b>LeC1_3</b>	44563200	39203048(87.97%)	38445884(86.27%)	757164(1.7%)	19276298(43.26%)	19169586(43.02%)
<b>LeHH3_1</b>	42740668	38375777(89.79%)	37646498(88.08%)	729279(1.71%)	18886745(44.19%)	18759753(43.89%)
<b>LeHH3_2</b>	42238460	37920210(89.78%)	37278620(88.26%)	641590(1.52%)	18694865(44.26%)	18583755(44.0%)
<b>LeHH3_3</b>	45925830	41075073(89.44%)	40110567(87.34%)	964506(2.1%)	20140656(43.85%)	19969911(43.48%)
<b>LeHH24_1</b>	39402522	35396509(89.83%)	34863762(88.48%)	532747(1.35%)	17494902(44.4%)	17368860(44.08%)
<b>LeHH24_2</b>	39876902	35570223(89.2%)	34985351(87.73%)	584872(1.47%)	17499301(43.88%)	17486050(43.85%)
<b>LeHH24_3</b>	41030946	36799579(89.69%)	36156647(88.12%)	642932(1.57%)	18127679(44.18%)	18028968(43.94%)

**Table S3 DEG lists of LeHH3h vs LeHH0h**

<b>gene</b>	<b>log2FoldChange</b>	<b>pvalue</b>
gene-Led00038-sp3	-0.905992319	0.00702816
gene-Led00044-sp3	1.224278936	0.000293164
gene-Led00080-sp3	-0.84923915	5.40E-05
gene-Led00095-sp3	2.885115079	2.55E-15
gene-Led00100-sp3	0.554838203	0.004863809
gene-Led00115-sp3	-0.777072537	0.00044469
gene-Led00127-sp3	-1.692814351	2.44E-12
gene-Led00165-sp3	0.66509999	0.000962843
gene-Led00180-sp3	-0.699544536	0.001090459
gene-Led00246-sp3	0.361687854	0.006713128
gene-Led00247-sp3	-0.353592446	0.009184156
gene-Led00250-sp3	0.713418516	0.001012739
gene-Led00287-sp3	0.431836153	0.009502698
gene-Led00318-sp3	0.908801928	2.26E-07
gene-Led00326-sp3	-1.527498061	3.85E-07
gene-Led00345-sp3	-0.835103771	0.000148258
gene-Led00346-sp3	0.563827413	0.000527416
gene-Led00428-sp3	0.415600444	0.006052967
gene-Led00433-sp3	-0.881403263	0.004471958
gene-Led00446-sp3	0.501326509	0.000821901
gene-Led00449-sp3	0.597080829	0.003630372
gene-Led00458-sp3	0.472259709	0.006332523
gene-Led00484-sp3	0.528061793	0.001677093
gene-Led00487-sp3	0.569573127	0.000676656
gene-Led00488-sp3	0.455115982	0.005897278
gene-Led00503-sp3	-0.528103383	0.000943759
gene-Led00522-sp3	0.602868946	0.000215024
gene-Led00534-sp3	-2.770573217	3.48E-15
gene-Led00553-sp3	-1.964963833	2.84E-15
gene-Led00583-sp3	0.492586251	0.008319159
gene-Led00588-sp3	-2.128996207	2.23E-22
gene-Led00610-sp3	0.516385825	0.006181292
gene-Led00622-sp3	1.928554104	0.00027588
gene-Led00647-sp3	1.708639016	9.03E-12
gene-Led00649-sp3	0.840937052	0.000154492
gene-Led00655-sp3	0.673506883	0.001214402
gene-Led00680-sp3	-2.253411996	2.42E-31
gene-Led00683-sp3	-1.088912357	0.00018701
gene-Led00702-sp3	0.56578008	0.002350954
gene-Led00748-sp3	0.417709998	0.007816427
gene-Led00751-sp3	0.411112676	0.008800512

gene-Led00753-sp3	0.579460701	0.001120262
gene-Led00763-sp3	0.523424806	0.001615587
gene-Led00803-sp3	-0.657748087	0.000301205
gene-Led00828-sp3	-0.772937027	0.000302475
gene-Led00838-sp3	0.497464449	0.007305582
gene-Led00878-sp3	-1.717705544	0.0000107
gene-Led00899-sp3	0.455164045	0.003261332
gene-Led00910-sp3	0.393448692	0.004621652
gene-Led00920-sp3	0.588697504	0.003697597
gene-Led00929-sp3	-1.568631823	1.00E-07
gene-Led00943-sp3	-0.900984607	1.24E-05
gene-Led00981-sp3	-0.646324231	0.003171396
gene-Led01058-sp3	1.512164869	0.002120197
gene-Led01075-sp3	0.592591493	0.001132892
gene-Led01098-sp3	-0.65840667	0.000979472
gene-Led01128-sp3	0.467760692	0.002954987
gene-Led01148-sp3	-2.077235426	0.0000312
gene-Led01207-sp3	0.471944502	0.004711043
gene-Led01215-sp3	0.512411991	0.001813607
gene-Led01218-sp3	1.706177399	1.96E-15
gene-Led01260-sp3	0.71147662	0.001290371
gene-Led01274-sp3	-0.545757821	0.000830247
gene-Led01295-sp3	0.515742065	0.008793046
gene-Led01321-sp3	-0.716905089	0.00881039
gene-Led01338-sp3	0.412768633	0.008375905
gene-Led01343-sp3	0.968833069	1.91E-06
gene-Led01347-sp3	-1.158906975	0.000146736
gene-Led01372-sp3	0.460310923	0.005335666
gene-Led01435-sp3	0.940626476	0.000176622
gene-Led01444-sp3	0.376449756	0.0066546
gene-Led01468-sp3	-0.752707886	0.005544141
gene-Led01475-sp3	-0.845748222	0.005585884
gene-Led01527-sp3	0.593277961	0.001379366
gene-Led01530-sp3	0.519794123	0.00131829
gene-Led01536-sp3	1.568096041	3.84E-14
gene-Led01538-sp3	-1.409794555	2.78E-05
gene-Led01543-sp3	0.532920756	0.001351585
gene-Led01556-sp3	-1.153278961	0.002644866
gene-Led01568-sp3	0.731097593	0.001745897
gene-Led01573-sp3	0.363461075	0.009138976
gene-Led01609-sp3	-1.474334129	1.03E-09
gene-Led01612-sp3	-3.36720449	2.26E-27
gene-Led01618-sp3	0.542661562	0.000622
gene-Led01619-sp3	0.651761068	0.000399337

gene-Led01636-sp3	0.624402142	0.002360445
gene-Led01643-sp3	0.541079037	0.001974068
gene-Led01665-sp3	0.663581678	1.01E-04
gene-Led01667-sp3	0.595214525	0.00220211
gene-Led01674-sp3	0.863763944	1.67E-06
gene-Led01687-sp3	-1.197971983	0.0001264
gene-Led01698-sp3	-1.296363652	3.37E-06
gene-Led01699-sp3	0.385330283	0.00906599
gene-Led01700-sp3	0.64980853	0.000139282
gene-Led01707-sp3	0.807083149	8.68E-07
gene-Led01719-sp3	1.341407114	0.002757787
gene-Led01720-sp3	0.859461087	0.000146743
gene-Led01721-sp3	0.414837473	0.004698725
gene-Led01752-sp3	0.555916109	0.00210482
gene-Led01757-sp3	0.594677289	0.002020359
gene-Led01764-sp3	-2.26707273	2.49E-11
gene-Led01765-sp3	-1.280841403	0.004763039
gene-Led01821-sp3	1.263361825	0.000514036
gene-Led01831-sp3	-2.174222875	2.17E-13
gene-Led01835-sp3	-0.768440264	0.00614192
gene-Led01861-sp3	0.511101536	0.0055287
gene-Led01906-sp3	0.518074593	0.002061308
gene-Led01938-sp3	-1.712275961	9.56E-07
gene-Led01951-sp3	-1.982732825	0.0000556
gene-Led01960-sp3	1.293693699	5.22E-09
gene-Led01961-sp3	-1.127110125	5.50E-06
gene-Led01968-sp3	-0.733066019	0.001496261
gene-Led01978-sp3	-1.567753224	6.03E-07
gene-Led02006-sp3	0.575295116	0.000255131
gene-Led02046-sp3	0.579417946	0.000199804
gene-Led02047-sp3	0.70243331	2.22E-05
gene-Led02053-sp3	0.543207722	0.003552919
gene-Led02063-sp3	0.908967779	9.74E-05
gene-Led02086-sp3	0.681958011	6.16E-05
gene-Led02107-sp3	0.494058921	0.008539402
gene-Led02123-sp3	0.485767989	0.00355998
gene-Led02127-sp3	0.457795424	0.003521464
gene-Led02188-sp3	-1.744664915	0.000243043
gene-Led02200-sp3	-0.756715132	0.004562518
gene-Led02203-sp3	0.545331674	0.000711931
gene-Led02238-sp3	1.219892412	1.10E-08
gene-Led02239-sp3	0.615896218	0.002068042
gene-Led02347-sp3	1.211958552	0.0000907
gene-Led02368-sp3	-1.517089991	1.88E-09

gene-Led02374-sp3	0.668269905	0.000562922
gene-Led02383-sp3	0.420208451	0.008225588
gene-Led02387-sp3	0.47033205	0.009326515
gene-Led02397-sp3	-1.526527406	9.74E-07
gene-Led02438-sp3	-3.349641927	9.25E-16
gene-Led02486-sp3	0.477393524	0.00658877
gene-Led02526-sp3	0.596967916	0.001711357
gene-Led02550-sp3	-0.924320036	0.000874888
gene-Led02625-sp3	-2.845216356	2.51E-15
gene-Led02639-sp3	0.710818403	2.62E-05
gene-Led02640-sp3	1.366819707	0.004151835
gene-Led02648-sp3	0.651766439	0.000460901
gene-Led02690-sp3	2.156387369	1.11E-09
gene-Led02705-sp3	0.50945261	0.001271566
gene-Led02746-sp3	-1.004523039	1.69E-06
gene-Led02753-sp3	0.569436985	0.002203103
gene-Led02755-sp3	0.688137767	0.00016451
gene-Led02776-sp3	0.572515178	0.001902764
gene-Led02777-sp3	0.545489516	0.000544514
gene-Led02787-sp3	0.477353608	0.00304617
gene-Led02838-sp3	0.595777766	0.000665401
gene-Led02883-sp3	-1.400712251	0.0000916
gene-Led02903-sp3	-0.490564537	0.007707069
gene-Led02908-sp3	0.534814018	0.001151026
gene-Led02922-sp3	0.591587722	0.009788794
gene-Led02941-sp3	0.557803639	0.000750812
gene-Led02958-sp3	0.58419066	0.000644468
gene-Led02981-sp3	0.667114948	0.000147988
gene-Led02988-sp3	0.399180446	0.008247062
gene-Led02995-sp3	0.414013415	0.005863489
gene-Led03000-sp3	3.27898275	0.000000469
gene-Led03018-sp3	-0.62339642	0.001471208
gene-Led03030-sp3	0.935442366	0.000186217
gene-Led03038-sp3	0.598022679	0.000336225
gene-Led03044-sp3	0.469306005	0.004742735
gene-Led03047-sp3	0.473982602	0.005532338
gene-Led03048-sp3	0.406485221	0.007248918
gene-Led03053-sp3	0.846170989	1.18E-05
gene-Led03053-sp3	0.861325419	6.62E-05
gene-Led03054-sp3	0.706251678	1.03E-05
gene-Led03076-sp3	1.318526425	2.80E-08
gene-Led03111-sp3	0.446312671	0.003951701
gene-Led03207-sp3	0.490103737	0.004455711
gene-Led03208-sp3	1.285163514	2.58E-09



gene-Led03227-sp3	0.568008426	0.004224649
gene-Led03250-sp3	-0.842926009	0.003252644
gene-Led03256-sp3	0.399616729	0.00306749
gene-Led03324-sp3	0.337602449	0.009160127
gene-Led03328-sp3	-2.187555986	1.34E-09
gene-Led03375-sp3	0.412810175	0.009681925
gene-Led03423-sp3	0.843093034	0.001188569
gene-Led03434-sp3	-1.717407578	2.20E-05
gene-Led03440-sp3	0.74081686	0.00261754
gene-Led03446-sp3	0.550041101	0.000384089
gene-Led03464-sp3	0.859471334	0.0000999
gene-Led03466-sp3	-1.366829164	0.0000178
gene-Led03481-sp3	-0.90457335	0.001942902
gene-Led03484-sp3	-1.471479453	0.0000772
gene-Led03566-sp3	0.47012557	0.005034201
gene-Led03576-sp3	-0.686283091	0.001229902
gene-Led03580-sp3	0.77359489	5.28E-05
gene-Led03596-sp3	-0.676460453	0.001152268
gene-Led03597-sp3	0.627398205	0.001124755
gene-Led03620-sp3	0.74472172	1.01E-04
gene-Led03682-sp3	0.539623396	0.006641355
gene-Led03763-sp3	0.690976498	0.001372273
gene-Led03765-sp3	-0.964090169	3.74E-06
gene-Led03786-sp3	0.918924444	0.003259573
gene-Led03830-sp3	0.907649554	2.62E-06
gene-Led03842-sp3	-2.27609781	3.57E-10
gene-Led03887-sp3	-1.027656213	1.41E-06
gene-Led03889-sp3	0.624267598	0.000339744
gene-Led03890-sp3	0.568506026	0.000578855
gene-Led03896-sp3	-1.081206054	0.000470782
gene-Led03897-sp3	-1.831417068	6.09E-14
gene-Led03898-sp3	-1.549870075	1.23E-18
gene-Led03900-sp3	0.46245791	0.00789425
gene-Led03907-sp3	-1.308403686	0.001451725
gene-Led03916-sp3	1.74554897	0.000928318
gene-Led03927-sp3	-0.627262671	0.007075136
gene-Led03966-sp3	0.392513527	0.00975904
gene-Led03994-sp3	3.330407912	0.001260875
gene-Led03997-sp3	0.637819087	0.000375196
gene-Led04039-sp3	0.471647508	0.006165938
gene-Led04040-sp3	0.99289736	1.69E-07
gene-Led04060-sp3	0.468825059	0.003765726
gene-Led04069-sp3	0.634617276	0.000723521
gene-Led04098-sp3	0.549369842	0.002666435

gene-Led04102-sp3	1.954369487	0.00206219
gene-Led04106-sp3	0.407276702	0.003502997
gene-Led04107-sp3	0.542177756	0.000674746
gene-Led04121-sp3	-0.559496778	0.002727986
gene-Led04132-sp3	0.44903468	0.002962063
gene-Led04181-sp3	-0.6672486	0.008368495
gene-Led04243-sp3	0.676269651	0.000158754
gene-Led04279-sp3	-2.19442334	8.35E-19
gene-Led04285-sp3	-0.775245746	0.000192096
gene-Led04286-sp3	0.526797139	0.001497648
gene-Led04298-sp3	0.658524836	8.53E-05
gene-Led04303-sp3	1.117273189	1.31E-07
gene-Led04322-sp3	0.80006066	6.04E-06
gene-Led04323-sp3	0.756251269	1.32E-06
gene-Led04345-sp3	-2.105219312	1.58E-09
gene-Led04362-sp3	0.484198591	0.006766338
gene-Led04364-sp3	0.442020518	0.003649561
gene-Led04373-sp3	-0.680087983	0.002003698
gene-Led04399-sp3	0.725228741	0.003808327
gene-Led04417-sp3	-0.464904818	0.008517764
gene-Led04429-sp3	-0.623740588	0.000335308
gene-Led04483-sp3	-3.007247873	0.000000111
gene-Led04484-sp3	-1.674190174	0.001215107
gene-Led04499-sp3	-0.937482603	0.000811646
gene-Led04523-sp3	0.482654662	0.002952892
gene-Led04590-sp3	-0.785562858	0.004115885
gene-Led04617-sp3	-2.067632404	5.05E-10
gene-Led04637-sp3	0.508634421	0.0020094
gene-Led04649-sp3	-0.873953334	0.001907518
gene-Led04656-sp3	0.570711656	0.001976843
gene-Led04683-sp3	-1.450363864	1.74E-08
gene-Led04748-sp3	-0.754671594	0.005301498
gene-Led04755-sp3	0.443574767	0.009763024
gene-Led04763-sp3	-0.757712326	2.04E-05
gene-Led04796-sp3	-0.928486029	0.000885528
gene-Led04806-sp3	-0.833016563	0.001674533
gene-Led04883-sp3	-0.85069637	0.004125352
gene-Led04936-sp3	0.557173513	0.001627985
gene-Led04949-sp3	-0.77348574	1.51E-05
gene-Led04975-sp3	-1.071750886	4.26E-06
gene-Led04976-sp3	-1.219412626	0.001658525
gene-Led05017-sp3	-0.767794697	0.008612855
gene-Led05019-sp3	0.442905541	0.007285099
gene-Led05022-sp3	-1.303125923	5.27E-06

gene-Led05029-sp3	0.502179029	0.002348421
gene-Led05031-sp3	1.478860387	4.68E-06
gene-Led05034-sp3	1.022112166	0.000153941
gene-Led05036-sp3	-1.307535111	8.94E-05
gene-Led05063-sp3	0.593889203	0.009796794
gene-Led05068-sp3	-2.641835988	6.38E-08
gene-Led05069-sp3	0.466630457	0.006936527
gene-Led05085-sp3	0.545733531	0.000475515
gene-Led05089-sp3	0.410938354	0.00950963
gene-Led05095-sp3	-0.548479398	0.00305703
gene-Led05130-sp3	-0.693027392	0.000948236
gene-Led05133-sp3	1.016820886	0.000110886
gene-Led05164-sp3	-0.71481558	0.009108252
gene-Led05200-sp3	0.624156882	0.004252677
gene-Led05219-sp3	-1.231222709	3.84E-06
gene-Led05248-sp3	-1.182859602	1.49E-05
gene-Led05248-sp3	0.722975582	0.00175655
gene-Led05272-sp3	0.519821381	0.002173396
gene-Led05273-sp3	1.311687737	3.08E-08
gene-Led05300-sp3	1.80501089	7.99E-11
gene-Led05321-sp3	0.560707427	0.000992326
gene-Led05328-sp3	-1.023263529	4.23E-05
gene-Led05331-sp3	0.629539696	0.000550893
gene-Led05332-sp3	-0.894666639	0.000879153
gene-Led05462-sp3	-0.649649844	0.000122202
gene-Led05501-sp3	0.502252592	0.002297045
gene-Led05511-sp3	0.557482888	0.000849661
gene-Led05539-sp3	0.675201996	0.009067559
gene-Led05558-sp3	-0.54160672	0.006520138
gene-Led05573-sp3	0.573899459	0.000790667
gene-Led05597-sp3	0.649054682	0.000326541
gene-Led05629-sp3	0.435999718	0.004216441
gene-Led05652-sp3	0.495026239	0.002429828
gene-Led05686-sp3	0.411709737	0.007312493
gene-Led05718-sp3	-1.35960872	0.000294444
gene-Led05768-sp3	0.508175657	0.00144806
gene-Led05778-sp3	0.454214173	0.004078472
gene-Led05789-sp3	0.861770874	1.14E-05
gene-Led05795-sp3	2.237232525	0.00000947
gene-Led05802-sp3	0.596880121	0.001562188
gene-Led05804-sp3	0.618613751	0.000487095
gene-Led05807-sp3	0.666153571	0.000565341
gene-Led05808-sp3	1.288114747	9.70E-10
gene-Led05940-sp3	-0.570633452	0.003125862

gene-Led05961-sp3	2.470863441	0.001110602
gene-Led06015-sp3	1.047035051	0.002226665
gene-Led06029-sp3	1.261381248	1.02E-06
gene-Led06034-sp3	0.913040084	0.0000992
gene-Led06035-sp3	0.935077586	0.000325321
gene-Led06059-sp3	1.774794063	8.65E-15
gene-Led06060-sp3	0.821905881	3.24E-06
gene-Led06083-sp3	-0.598028706	0.004076242
gene-Led06149-sp3	-2.499983789	3.57E-25
gene-Led06150-sp3	-2.159316103	1.99E-18
gene-Led06164-sp3	0.591542417	0.006062193
gene-Led06253-sp3	-1.025767576	3.80E-10
gene-Led06260-sp3	-0.686377824	0.005321286
gene-Led06278-sp3	0.586206967	0.001768791
gene-Led06279-sp3	0.570198374	0.00542917
gene-Led06338-sp3	0.821878147	0.000506561
gene-Led06351-sp3	-0.846911264	0.002228649
gene-Led06363-sp3	0.418075153	0.003703474
gene-Led06365-sp3	0.717835505	0.000406405
gene-Led06391-sp3	0.51141922	0.003213766
gene-Led06448-sp3	0.473396045	0.009188109
gene-Led06450-sp3	0.561724038	0.001381735
gene-Led06456-sp3	-0.900930713	0.000187913
gene-Led06460-sp3	0.631311925	0.000348456
gene-Led06477-sp3	1.002329448	0.002066935
gene-Led06490-sp3	0.409219435	0.00589346
gene-Led06497-sp3	0.632285386	2.36E-05
gene-Led06499-sp3	-1.303777371	0.004948911
gene-Led06500-sp3	0.576096361	0.003835086
gene-Led06516-sp3	0.716776551	0.000450631
gene-Led06524-sp3	-1.007977616	7.50E-06
gene-Led06540-sp3	0.465176613	0.006656611
gene-Led06546-sp3	-1.187320366	0.002008306
gene-Led06552-sp3	0.472869081	0.001874604
gene-Led06565-sp3	0.785698014	0.000837605
gene-Led06582-sp3	-1.002410276	1.08E-05
gene-Led06586-sp3	0.866540516	0.008609514
gene-Led06587-sp3	0.42423792	0.004258065
gene-Led06601-sp3	0.812203839	3.91E-06
gene-Led06611-sp3	0.549554743	0.000682253
gene-Led06632-sp3	0.63723538	0.000472363
gene-Led06637-sp3	0.523098798	0.00179398
gene-Led06646-sp3	0.767251826	3.20E-05
gene-Led06661-sp3	0.563002909	0.00070752

gene-Led06662-sp3	0.59259674	0.000359521
gene-Led06674-sp3	0.602895325	0.000448395
gene-Led06679-sp3	-0.619255698	0.00262941
gene-Led06743-sp3	0.497582684	0.001875283
gene-Led06804-sp3	0.43369247	0.00954411
gene-Led06807-sp3	-0.795192974	0.004984331
gene-Led06873-sp3	-0.831728821	1.27E-05
gene-Led06888-sp3	-0.2140026	0.004332404
gene-Led06902-sp3	0.432931449	0.005306961
gene-Led06911-sp3	1.354151029	0.000350314
gene-Led06950-sp3	0.516139561	0.003655779
gene-Led06957-sp3	-0.748562913	0.001172595
gene-Led07002-sp3	1.561971565	1.21E-08
gene-Led07008-sp3	-1.216344228	1.00E-05
gene-Led07046-sp3	0.532685555	0.003129974
gene-Led07100-sp3	-1.612497134	1.57E-06
gene-Led07102-sp3	-2.057218154	4.47E-20
gene-Led07143-sp3	0.754279265	0.000376701
gene-Led07148-sp3	1.984772254	0.000143067
gene-Led07155-sp3	-0.546250717	0.007153299
gene-Led07186-sp3	0.894015201	2.40E-05
gene-Led07201-sp3	-0.803866499	0.003072457
gene-Led07210-sp3	0.585928902	0.003872744
gene-Led07217-sp3	1.221670716	3.66E-06
gene-Led07218-sp3	0.747270759	0.000946925
gene-Led07222-sp3	0.774801295	0.000297252
gene-Led07224-sp3	0.598475613	0.006725162
gene-Led07227-sp3	-0.691315154	0.001472049
gene-Led07305-sp3	0.499598739	0.003399243
gene-Led07321-sp3	0.562106341	0.000203065
gene-Led07327-sp3	-0.58289099	0.003817738
gene-Led07328-sp3	-0.58289099	0.003817738
gene-Led07329-sp3	-0.58289099	0.003817738
gene-Led07332-sp3	-0.58289099	0.003817738
gene-Led07334-sp3	0.040894385	0.000427612
gene-Led07335-sp3	-0.58289099	0.003817738
gene-Led07362-sp3	0.728603149	6.56E-06
gene-Led07391-sp3	-1.615738612	2.44E-07
gene-Led07419-sp3	0.656923074	0.002902299
gene-Led07489-sp3	0.578707778	0.00042075
gene-Led07503-sp3	0.999997177	2.25E-06
gene-Led07506-sp3	-1.029178299	4.97E-06
gene-Led07513-sp3	1.097292515	0.000687292
gene-Led07517-sp3	0.623786977	0.000390743

gene-Led07518-sp3	0.46740763	0.0022144
gene-Led07525-sp3	0.447920592	0.009062248
gene-Led07526-sp3	-0.95666465	0.004155938
gene-Led07537-sp3	0.405880779	0.006348509
gene-Led07552-sp3	-0.848338308	0.001718968
gene-Led07571-sp3	0.448942877	0.003521791
gene-Led07581-sp3	0.630595146	1.92E-05
gene-Led07604-sp3	0.862356381	1.61E-06
gene-Led07626-sp3	-0.67382655	0.001123639
gene-Led07685-sp3	1.284576308	1.56E-06
gene-Led07695-sp3	0.522826391	0.001316986
gene-Led07705-sp3	0.418922064	0.004200326
gene-Led07712-sp3	0.715116539	5.88E-05
gene-Led07718-sp3	0.435056032	0.007747226
gene-Led07720-sp3	0.436332811	0.003982004
gene-Led07765-sp3	0.528168216	0.00312546
gene-Led07782-sp3	-1.037995078	0.000435593
gene-Led07793-sp3	0.636162569	0.000775749
gene-Led07803-sp3	-0.834602375	0.003205262
gene-Led07810-sp3	0.569671953	0.001493256
gene-Led07827-sp3	0.557386732	0.00094675
gene-Led07842-sp3	0.654001381	0.00105046
gene-Led07853-sp3	0.577959253	0.002725344
gene-Led07862-sp3	0.415382558	0.004728859
gene-Led07891-sp3	0.463239161	0.004061885
gene-Led07902-sp3	0.446921007	0.003679626
gene-Led07918-sp3	0.850997055	9.55E-06
gene-Led07925-sp3	0.55852032	0.000870817
gene-Led07958-sp3	-1.057279717	0.000308881
gene-Led07963-sp3	-0.825533926	1.08E-04
gene-Led08017-sp3	0.601692055	0.00060157
gene-Led08026-sp3	1.329828493	0.004373417
gene-Led08036-sp3	0.76538722	0.00028604
gene-Led08044-sp3	0.361124653	0.008075849
gene-Led08091-sp3	0.686028212	0.000786386
gene-Led08123-sp3	0.496478454	0.001175529
gene-Led08127-sp3	0.539563395	0.000942051
gene-Led08187-sp3	-1.791238375	0.000148017
gene-Led08204-sp3	0.574930725	0.000479205
gene-Led08218-sp3	-1.550954596	3.17E-08
gene-Led08224-sp3	1.890577892	0.000186212
gene-Led08257-sp3	-1.859708878	0.00000392
gene-Led08281-sp3	0.559618161	0.001264592
gene-Led08308-sp3	0.417778701	0.005073747

gene-Led08389-sp3	-0.563473285	0.003379629
gene-Led08431-sp3	0.512448113	0.000565528
gene-Led08460-sp3	-1.621580645	1.69E-07
gene-Led08519-sp3	0.471331724	0.002006338
gene-Led08615-sp3	0.547528665	0.000481677
gene-Led08636-sp3	-0.787724802	0.000366889
gene-Led08733-sp3	-1.063604462	4.00E-05
gene-Led08734-sp3	-1.253986816	2.42E-05
gene-Led08757-sp3	-0.5421189	0.004455919
gene-Led08786-sp3	-0.723394649	0.001023856
gene-Led08812-sp3	0.462252047	0.001506384
gene-Led08827-sp3	0.926218577	1.77E-08
gene-Led08829-sp3	0.917321334	1.68E-05
gene-Led08838-sp3	1.081098759	7.86E-09
gene-Led08840-sp3	-1.089027748	0.003032985
gene-Led08896-sp3	-1.30180567	0.00037332
gene-Led08908-sp3	1.103046558	1.98E-06
gene-Led09023-sp3	1.56522619	5.18E-11
gene-Led09024-sp3	-0.430498988	0.008916975
gene-Led09039-sp3	0.642059613	0.006164279
gene-Led09044-sp3	0.597316303	0.001294014
gene-Led09054-sp3	-0.917424261	1.18E-06
gene-Led09072-sp3	0.397117782	0.009220241
gene-Led09096-sp3	0.664720116	0.000155778
gene-Led09160-sp3	-0.564299296	0.009602631
gene-Led09161-sp3	-1.466238435	0.00000717
gene-Led09163-sp3	0.544120378	0.001362881
gene-Led09169-sp3	0.381812825	0.00713185
gene-Led09270-sp3	-0.655348642	0.003592346
gene-Led09272-sp3	0.444719073	0.005026708
gene-Led09273-sp3	0.432258321	0.003977023
gene-Led09277-sp3	-0.754551443	0.005413194
gene-Led09321-sp3	-0.635537933	0.004774634
gene-Led09355-sp3	0.434322657	0.007410461
gene-Led09358-sp3	-1.038712161	0.000201859
gene-Led09364-sp3	-1.25765717	0.000269817
gene-Led09371-sp3	0.466011148	0.003342058
gene-Led09418-sp3	-0.802427098	0.001070931
gene-Led09424-sp3	-0.811925738	0.002419053
gene-Led09430-sp3	0.838148758	1.50E-05
gene-Led09431-sp3	0.927895732	8.72E-05
gene-Led09437-sp3	0.841722095	5.68E-06
gene-Led09438-sp3	0.978841923	6.18E-08
gene-Led09450-sp3	0.79495005	4.06E-05



gene-Led09462-sp3	-1.218546756	0.002946143
gene-Led09501-sp3	0.409443374	0.004437762
gene-Led09516-sp3	0.860879118	3.60E-05
gene-Led09517-sp3	0.547016127	0.001509426
gene-Led09577-sp3	-0.733472244	0.005279
gene-Led09604-sp3	0.498151485	0.004059572
gene-Led09616-sp3	-1.866673632	3.23E-08
gene-Led09617-sp3	-1.058063341	7.48E-06
gene-Led09685-sp3	1.086157613	0.000429548
gene-Led09702-sp3	-0.844320491	0.000313765
gene-Led09712-sp3	-0.891537628	0.004583175
gene-Led09731-sp3	0.395517657	0.009637382
gene-Led09734-sp3	-0.229155025	0.005969013
gene-Led09825-sp3	0.518349448	0.002148045
gene-Led09885-sp3	-1.295937684	2.59E-07
gene-Led09984-sp3	0.628127803	0.000574396
gene-Led09997-sp3	1.311139965	0.006962941
gene-Led10016-sp3	0.613715353	0.000277922
gene-Led10040-sp3	0.439596104	0.003398933
gene-Led10041-sp3	0.607786412	0.001240845
gene-Led10046-sp3	-1.029005032	1.76E-05
gene-Led10083-sp3	0.872338414	0.000187026
gene-Led10088-sp3	0.613252571	0.000496484
gene-Led10102-sp3	0.673260651	0.000130544
gene-Led10145-sp3	-0.49598177	0.000983408
gene-Led10228-sp3	-0.938383023	0.000175938
gene-Led10235-sp3	-1.202352003	0.001378633
gene-Led10238-sp3	-1.431439897	0.000941878
gene-Led10239-sp3	1.238727046	5.15E-09
gene-Led10299-sp3	-0.79549449	0.005362152
gene-Led10334-sp3	-0.803584532	0.004155225
gene-Led10376-sp3	-0.635975853	0.003728101
gene-Led10456-sp3	0.405000406	0.009348758
gene-Led10484-sp3	-0.841389814	4.78E-05
gene-Led10492-sp3	-0.775576754	0.000179867
gene-Led10531-sp3	-1.924617049	1.44E-17
gene-Led10555-sp3	-1.402820337	6.55E-08
gene-Led10562-sp3	0.577141125	0.000421401
gene-Led10584-sp3	0.710455082	2.69E-05
gene-Led10587-sp3	0.632948637	0.000156029
gene-Led10643-sp3	0.584088689	0.001911626
gene-Led10674-sp3	0.496779091	0.001181524
gene-Led10686-sp3	0.511504433	0.003285955
gene-Led10746-sp3	0.610597495	0.001675596

gene-Led10757-sp3	0.946972275	0.000724195
gene-Led10763-sp3	-0.539499205	0.004904371
gene-Led10768-sp3	-0.537462053	0.004285673
gene-Led10813-sp3	0.858744023	8.29E-06
gene-Led10877-sp3	0.454047064	0.009199623
gene-Led10888-sp3	0.544457477	0.002323114
gene-Led10891-sp3	0.624397589	0.000294024
gene-Led10892-sp3	1.706180349	0.0000216
gene-Led10927-sp3	0.923933228	0.0053261
gene-Led10930-sp3	0.614388099	0.000247512
gene-Led10991-sp3	1.708639016	9.03E-12
gene-Led10993-sp3	0.840937052	0.000154492
gene-Led10998-sp3	0.76672857	0.002100344
gene-Led11008-sp3	-0.58289099	0.003817738
gene-Led11010-sp3	-0.58289099	0.003817738
gene-Led11012-sp3	-0.58289099	0.003817738
gene-Led11122-sp3	-1.303125923	5.27E-06
gene-Led11182-sp3	-0.541740775	0.003264716
gene-Led11264-sp3	0.87459717	0.00202385
gene-Led11436-sp3	0.498151485	0.004059572

---

**Table S4 DEG lists of LeHH24h vs LeHH0h**

<b>gene</b>	<b>log2FoldChange</b>	<b>pvalue</b>
gene-Led00002-sp3	0.884658861	0.003860364
gene-Led00032-sp3	-0.980425368	0.0086175
gene-Led00038-sp3	-1.51862801	0.001126656
gene-Led00039-sp3	-0.961523732	0.002084475
gene-Led00043-sp3	-0.81163756	0.008795189
gene-Led00080-sp3	-1.045766383	0.00000303
gene-Led00095-sp3	1.430407342	0.0000724
gene-Led00100-sp3	0.978827461	0.00000848
gene-Led00101-sp3	-0.946623752	0.003151243
gene-Led00117-sp3	1.114179743	0.00000132
gene-Led00122-sp3	1.107675847	0.000877962
gene-Led00127-sp3	-4.550205967	2.05E-47
gene-Led00130-sp3	-1.656766831	0.000284865
gene-Led00171-sp3	-0.907061119	0.000568868
gene-Led00180-sp3	-1.674884685	9.04E-11
gene-Led00196-sp3	-1.14558838	0.000174151
gene-Led00247-sp3	-0.4289909	0.006675272
gene-Led00250-sp3	0.706386425	0.001187254
gene-Led00256-sp3	1.139814126	0.00024372
gene-Led00278-sp3	-1.167201306	0.001318276
gene-Led00280-sp3	0.552140811	0.000579441
gene-Led00287-sp3	-0.526203731	0.008276073
gene-Led00318-sp3	0.774131792	0.00000421
gene-Led00326-sp3	-2.462030874	4.02E-12
gene-Led00329-sp3	-0.818051129	0.009360569
gene-Led00336-sp3	-1.326524658	0.000000169
gene-Led00345-sp3	1.262559219	0.005572555
gene-Led00346-sp3	0.573012433	0.000124254
gene-Led00395-sp3	-1.41096077	0.0000132
gene-Led00411-sp3	-0.717670478	0.008442208
gene-Led00433-sp3	-1.91726536	0.0000173
gene-Led00433-sp3	-1.361759388	0.002748618
gene-Led00452-sp3	-0.625716414	0.000991527
gene-Led00457-sp3	0.660847197	0.006844967
gene-Led00473-sp3	1.640120934	0.000122309
gene-Led00498-sp3	0.845743997	0.00502626
gene-Led00503-sp3	-1.093249963	5.26E-10
gene-Led00518-sp3	0.728901541	0.003074949
gene-Led00522-sp3	0.540866442	0.005020539
gene-Led00534-sp3	-2.547521365	2.18E-14
gene-Led00538-sp3	-1.566347621	0.002815963
gene-Led00547-sp3	0.767526728	0.001179862

gene-Led00552-sp3	-1.738281337	1.05E-10
gene-Led00553-sp3	-2.980125573	8.08E-27
gene-Led00559-sp3	-0.997626772	0.000907685
gene-Led00561-sp3	-0.594831293	0.005997328
gene-Led00566-sp3	0.747937368	0.001019526
gene-Led00576-sp3	0.735059443	0.002361563
gene-Led00581-sp3	0.475370215	0.001576342
gene-Led00589-sp3	0.395909585	0.008611365
gene-Led00590-sp3	0.88964205	0.002225685
gene-Led00619-sp3	1.226999274	0.00000186
gene-Led00655-sp3	1.144118952	0.000000465
gene-Led00661-sp3	0.457705332	0.000912759
gene-Led00680-sp3	-0.485073025	0.003261329
gene-Led00683-sp3	-3.708411653	4.56E-14
gene-Led00693-sp3	0.684180846	0.000851814
gene-Led00702-sp3	0.525242274	0.008034139
gene-Led00709-sp3	2.94670599	1.07E-08
gene-Led00727-sp3	0.757459856	0.005222107
gene-Led00734-sp3	2.81779726	0.0000703
gene-Led00741-sp3	2.672526421	0.0000129
gene-Led00742-sp3	0.985988849	0.0000195
gene-Led00748-sp3	0.536392849	0.005222844
gene-Led00751-sp3	0.560110978	0.002220912
gene-Led00753-sp3	0.516684212	0.003239784
gene-Led00754-sp3	1.056522578	0.00000024
gene-Led00777-sp3	0.971843266	2.83E-08
gene-Led00809-sp3	0.717416798	0.004596496
gene-Led00823-sp3	-4.434161235	0.000844891
gene-Led00833-sp3	0.793752339	0.004256536
gene-Led00864-sp3	0.505872752	0.007108619
gene-Led00883-sp3	1.140859116	0.0000742
gene-Led00902-sp3	-2.603914101	4.41E-28
gene-Led00903-sp3	-1.846444719	4.44E-17
gene-Led00904-sp3	-2.428295293	0.00000198
gene-Led00905-sp3	-3.494505695	7.05E-53
gene-Led00906-sp3	-2.190565021	9.6E-25
gene-Led00907-sp3	-3.61440125	9.34E-23
gene-Led00907-sp3	-2.993189488	1.89E-18
gene-Led00908-sp3	-1.178261644	4.76E-08
gene-Led00909-sp3	-1.859266113	9.39E-12
gene-Led00910-sp3	-1.701601388	1.02E-22
gene-Led00911-sp3	-2.756963103	0.000115025
gene-Led00911-sp3	-1.662322227	0.000372909
gene-Led00912-sp3	-3.289269524	0.000000479

gene-Led00918-sp3	1.592371982	0.000037
gene-Led00921-sp3	0.511535916	0.001391457
gene-Led00925-sp3	-0.629519178	0.006207571
gene-Led00926-sp3	1.909385877	0.00000067
gene-Led00929-sp3	-3.235093277	9.56E-21
gene-Led00933-sp3	-0.637448272	0.002240132
gene-Led00934-sp3	0.696668766	0.003162645
gene-Led00940-sp3	0.606536495	0.001172648
gene-Led00943-sp3	-1.342577782	1.34E-10
gene-Led00975-sp3	-1.394433889	0.0000726
gene-Led00983-sp3	2.466245183	0.0000029
gene-Led01009-sp3	1.015954252	0.000120327
gene-Led01017-sp3	0.564324574	0.001972261
gene-Led01028-sp3	-0.916769985	0.0000227
gene-Led01058-sp3	1.783605016	0.000901574
gene-Led01075-sp3	0.779410962	0.0000519
gene-Led01085-sp3	0.477707295	0.006901348
gene-Led01098-sp3	-1.77718044	1.81E-12
gene-Led01116-sp3	1.071641069	0.00000102
gene-Led01121-sp3	-0.689899901	0.006852849
gene-Led01142-sp3	0.817382011	0.000109768
gene-Led01148-sp3	-1.592182711	0.000237628
gene-Led01166-sp3	2.654258792	1.45E-13
gene-Led01180-sp3	-2.714251574	9.24E-13
gene-Led01196-sp3	0.948607299	0.004967029
gene-Led01198-sp3	-1.251840961	0.000439134
gene-Led01201-sp3	-2.973942251	8.32E-16
gene-Led01215-sp3	0.471232954	0.008328937
gene-Led01221-sp3	-0.465189226	0.003983595
gene-Led01231-sp3	-0.888477793	0.0000765
gene-Led01245-sp3	-1.305177269	5.29E-10
gene-Led01246-sp3	0.694993279	0.002624244
gene-Led01247-sp3	0.704540514	0.001336773
gene-Led01249-sp3	-0.6704988	0.000442592
gene-Led01254-sp3	0.590222151	0.001399318
gene-Led01265-sp3	2.398446095	0.000857532
gene-Led01276-sp3	1.898420098	2.28E-09
gene-Led01279-sp3	0.567262241	0.005653005
gene-Led01295-sp3	0.592385324	0.007960964
gene-Led01300-sp3	-1.625707613	0.001850407
gene-Led01302-sp3	2.629550872	0.000000442
gene-Led01305-sp3	0.82598816	0.0000847
gene-Led01312-sp3	2.067826198	2.84E-10
gene-Led01325-sp3	-5.157532903	2.81E-56

gene-Led01338-sp3	-0.545481648	0.003348085
gene-Led01343-sp3	0.653873896	0.002474115
gene-Led01345-sp3	1.243216171	0.000563745
gene-Led01346-sp3	-0.804394331	0.00000494
gene-Led01347-sp3	1.067990052	0.0000464
gene-Led01348-sp3	-2.082411901	0.00036553
gene-Led01359-sp3	1.53575967	0.000000642
gene-Led01372-sp3	0.515043451	0.005478752
gene-Led01379-sp3	0.725173553	0.005240704
gene-Led01400-sp3	0.696543535	0.000153616
gene-Led01407-sp3	-1.874939818	0.000000147
gene-Led01431-sp3	0.737166723	0.002826398
gene-Led01443-sp3	-1.360022995	0.000101215
gene-Led01458-sp3	2.081239168	5.91E-13
gene-Led01466-sp3	-0.642670606	0.006192378
gene-Led01472-sp3	1.659325713	2.47E-11
gene-Led01475-sp3	-1.502829529	0.000291067
gene-Led01483-sp3	-1.990325558	0.000522009
gene-Led01492-sp3	-1.065086174	0.001077992
gene-Led01498-sp3	1.237582139	0.000000507
gene-Led01530-sp3	0.462595721	0.004277678
gene-Led01536-sp3	-0.628324626	0.000201507
gene-Led01537-sp3	2.201348565	0.00000914
gene-Led01538-sp3	3.284571587	3.34E-33
gene-Led01539-sp3	1.924743146	1.03E-11
gene-Led01548-sp3	2.131050194	0.000982984
gene-Led01550-sp3	1.597688791	0.000000054
gene-Led01556-sp3	-1.55758671	0.000585008
gene-Led01557-sp3	2.438666048	0.0000259
gene-Led01557-sp3	4.129170864	0.0000703
gene-Led01567-sp3	3.049616694	7.47E-23
gene-Led01568-sp3	1.68048791	5.32E-10
gene-Led01578-sp3	-1.644824183	0.000000077
gene-Led01603-sp3	-0.763307334	0.005166362
gene-Led01608-sp3	-0.45326999	0.004361348
gene-Led01609-sp3	-1.759783534	5.85E-13
gene-Led01612-sp3	-3.725642977	2.04E-30
gene-Led01618-sp3	0.649969241	0.000137153
gene-Led01630-sp3	1.602550971	0.001719029
gene-Led01632-sp3	0.604446108	0.001878223
gene-Led01634-sp3	-0.991925435	0.0000688
gene-Led01670-sp3	0.732407196	0.0000918
gene-Led01673-sp3	-1.521867648	4.12E-10
gene-Led01674-sp3	0.518059721	0.004872619

gene-Led01680-sp3	-1.056379126	0.001354748
gene-Led01684-sp3	-0.985088328	0.003729355
gene-Led01687-sp3	-2.388186548	5.08E-09
gene-Led01693-sp3	1.113020952	0.00657145
gene-Led01698-sp3	-2.088491516	7.98E-11
gene-Led01699-sp3	0.380604564	0.007700354
gene-Led01700-sp3	0.585038923	0.000358106
gene-Led01706-sp3	0.849580383	0.00000822
gene-Led01707-sp3	0.847985854	0.000000412
gene-Led01718-sp3	-2.492676969	5.57E-16
gene-Led01727-sp3	0.820058247	0.003727486
gene-Led01736-sp3	0.483520393	0.002974127
gene-Led01763-sp3	1.418210154	0.000037
gene-Led01764-sp3	2.34563601	1.15E-12
gene-Led01765-sp3	4.392257766	4.38E-38
gene-Led01767-sp3	0.683804509	0.000732998
gene-Led01769-sp3	-0.56802338	0.001250905
gene-Led01797-sp3	0.637693274	0.001826363
gene-Led01806-sp3	0.964590734	0.0000682
gene-Led01821-sp3	1.160187313	0.000762347
gene-Led01821-sp3	1.429486584	0.001677067
gene-Led01831-sp3	-2.70277376	7.41E-15
gene-Led01832-sp3	0.89670551	0.001360998
gene-Led01835-sp3	-1.251624739	0.000600308
gene-Led01837-sp3	1.458909254	0.006724166
gene-Led01838-sp3	1.866858594	0.000285999
gene-Led01843-sp3	1.104837177	0.002566197
gene-Led01859-sp3	2.526593313	1.25E-10
gene-Led01902-sp3	-0.496821214	0.006735554
gene-Led01916-sp3	-0.625912232	0.000216302
gene-Led01936-sp3	-1.130065282	0.007675403
gene-Led01938-sp3	-1.888768928	9.55E-08
gene-Led01939-sp3	-1.087329729	0.000685976
gene-Led01940-sp3	0.598337594	0.003732111
gene-Led01946-sp3	-0.664366075	0.009701425
gene-Led01950-sp3	1.117086009	0.001208523
gene-Led01951-sp3	-4.374233239	0.000000795
gene-Led01961-sp3	-1.064591632	0.0000242
gene-Led01968-sp3	-1.313806457	0.000000417
gene-Led01973-sp3	0.909048425	0.002290296
gene-Led01978-sp3	-5.438044822	5.37E-15
gene-Led02016-sp3	2.122771706	2.9E-14
gene-Led02021-sp3	1.139496316	0.001103004
gene-Led02054-sp3	0.864389311	0.001815486



gene-Led02063-sp3	1.682324464	1.12E-12
gene-Led02064-sp3	0.796665549	0.00021758
gene-Led02111-sp3	1.209886862	0.00000448
gene-Led02154-sp3	-2.081752985	0.0000944
gene-Led02157-sp3	1.206679325	4.56E-09
gene-Led02168-sp3	0.478671908	0.007578517
gene-Led02181-sp3	0.653143629	0.006662686
gene-Led02188-sp3	-2.335605068	0.0000233
gene-Led02212-sp3	-0.878678013	0.001339995
gene-Led02241-sp3	1.313383764	0.00031884
gene-Led02251-sp3	1.462700913	0.000162679
gene-Led02252-sp3	1.034770578	0.003371084
gene-Led02273-sp3	1.883005411	1.1E-19
gene-Led02291-sp3	1.57319343	0.000485072
gene-Led02293-sp3	0.58275462	0.001738499
gene-Led02300-sp3	0.809688481	0.000850924
gene-Led02325-sp3	0.79896677	0.0000918
gene-Led02347-sp3	1.048311516	0.000644341
gene-Led02351-sp3	0.618868168	0.000525902
gene-Led02374-sp3	0.73322228	0.000372049
gene-Led02376-sp3	-1.295069292	0.000102514
gene-Led02377-sp3	-1.662820622	0.00000214
gene-Led02381-sp3	0.782213401	0.002301298
gene-Led02383-sp3	0.496633828	0.000499922
gene-Led02384-sp3	3.061432775	0.000519205
gene-Led02397-sp3	-0.885080883	0.002054972
gene-Led02397-sp3	1.02076567	0.006156477
gene-Led02417-sp3	0.749327316	0.0000137
gene-Led02419-sp3	0.501744701	0.006804232
gene-Led02438-sp3	-5.136953843	1.29E-16
gene-Led02440-sp3	-2.127708772	7.43E-08
gene-Led02452-sp3	0.558447919	0.001609939
gene-Led02458-sp3	-1.02392194	0.001032634
gene-Led02478-sp3	0.857145176	0.001299274
gene-Led02486-sp3	0.544929379	0.002328009
gene-Led02494-sp3	3.342413469	1.28E-08
gene-Led02500-sp3	3.087038209	0.0000573
gene-Led02501-sp3	0.835507573	0.00000575
gene-Led02516-sp3	-1.311879384	0.000792413
gene-Led02521-sp3	1.131696274	0.000000699
gene-Led02526-sp3	0.6435428	0.003955121
gene-Led02550-sp3	-1.460883366	0.00000982
gene-Led02558-sp3	-1.104646042	0.000315533
gene-Led02605-sp3	0.598158043	0.003131298

gene-Led02611-sp3	0.564362698	0.004300748
gene-Led02625-sp3	-2.512737119	2.29E-13
gene-Led02640-sp3	2.250277666	0.0000893
gene-Led02640-sp3	-0.857194879	0.008550893
gene-Led02666-sp3	0.40646783	0.008672399
gene-Led02673-sp3	0.500938771	0.002096267
gene-Led02690-sp3	1.095978129	0.001445712
gene-Led02699-sp3	4.018346578	0.000014
gene-Led02707-sp3	0.612264955	0.000461997
gene-Led02726-sp3	0.674598022	0.003874191
gene-Led02736-sp3	2.439960696	3.41E-20
gene-Led02745-sp3	0.89475851	0.003914312
gene-Led02747-sp3	1.050046588	0.000529099
gene-Led02755-sp3	-0.507143499	0.007155825
gene-Led02757-sp3	1.646560122	1.26E-11
gene-Led02766-sp3	-0.911384352	0.006507655
gene-Led02769-sp3	0.52245835	0.00402662
gene-Led02776-sp3	1.617424105	3.14E-14
gene-Led02804-sp3	-0.407694068	0.002831496
gene-Led02823-sp3	0.474832598	0.006483259
gene-Led02850-sp3	-1.058621342	0.000407626
gene-Led02851-sp3	0.835153729	0.0000128
gene-Led02859-sp3	-1.028487782	1.47E-08
gene-Led02883-sp3	-2.575234165	0.000000025
gene-Led02884-sp3	0.43037552	0.005372341
gene-Led02893-sp3	0.77032127	0.00504444
gene-Led02898-sp3	-1.17653032	0.004310522
gene-Led02900-sp3	0.945133516	0.00000135
gene-Led02910-sp3	-2.336809405	1.69E-17
gene-Led02922-sp3	0.930858184	0.000620874
gene-Led02941-sp3	1.067682263	0.000000022
gene-Led02958-sp3	1.061393039	8.15E-10
gene-Led02986-sp3	-0.961555998	0.004180527
gene-Led02992-sp3	0.95491769	0.006492992
gene-Led03000-sp3	2.63547854	0.0000614
gene-Led03028-sp3	0.53969679	0.003651501
gene-Led03032-sp3	0.647022435	0.007697726
gene-Led03038-sp3	0.699873051	0.000147451
gene-Led03045-sp3	2.23430974	0.0000152
gene-Led03047-sp3	0.461369525	0.003874711
gene-Led03053-sp3	0.658442091	0.000612767
gene-Led03055-sp3	0.893403352	0.00237094
gene-Led03066-sp3	0.632403255	0.000132356
gene-Led03076-sp3	0.769116584	0.000999384

gene-Led03084-sp3	-0.855322839	0.000539926
gene-Led03097-sp3	0.923217863	0.000000699
gene-Led03128-sp3	0.548189356	0.002817855
gene-Led03152-sp3	0.453925271	0.001928724
gene-Led03154-sp3	-0.992943115	0.0000253
gene-Led03155-sp3	-1.356380414	0.00000344
gene-Led03165-sp3	0.742337687	0.002099215
gene-Led03168-sp3	0.993697003	0.00000411
gene-Led03172-sp3	-2.734467842	0.00000124
gene-Led03200-sp3	1.31054333	0.0000256
gene-Led03201-sp3	2.329520425	2.52E-08
gene-Led03203-sp3	-1.470981107	1.32E-09
gene-Led03208-sp3	0.877777888	0.00000578
gene-Led03210-sp3	0.830441062	0.009592624
gene-Led03217-sp3	-1.545046613	0.003379033
gene-Led03224-sp3	0.824279978	0.001714848
gene-Led03227-sp3	0.580240478	0.005839117
gene-Led03229-sp3	1.423099866	0.000323313
gene-Led03234-sp3	0.541307712	0.004288991
gene-Led03248-sp3	-1.463701504	0.0000999
gene-Led03250-sp3	0.939648652	0.00023312
gene-Led03258-sp3	0.797787739	0.006289596
gene-Led03270-sp3	1.438548605	0.000126523
gene-Led03287-sp3	2.805171565	6.18E-20
gene-Led03303-sp3	0.858844357	0.001695982
gene-Led03323-sp3	0.907503935	0.00000546
gene-Led03328-sp3	-2.126005296	2.8E-09
gene-Led03332-sp3	-0.752801929	0.003347376
gene-Led03343-sp3	-0.926595747	0.006994418
gene-Led03375-sp3	0.701125642	0.000116897
gene-Led03404-sp3	-1.016939675	0.009356242
gene-Led03418-sp3	-0.946825036	0.000428379
gene-Led03423-sp3	0.86999493	0.001811935
gene-Led03426-sp3	1.293377324	6.98E-09
gene-Led03433-sp3	0.507390853	0.004419293
gene-Led03434-sp3	1.818031736	0.000000157
gene-Led03440-sp3	1.199483491	0.0000192
gene-Led03441-sp3	1.227497206	0.0000121
gene-Led03464-sp3	0.954200363	0.0000925
gene-Led03466-sp3	-1.32975829	0.0000223
gene-Led03474-sp3	0.685359113	0.002954705
gene-Led03486-sp3	0.742497073	0.001911697
gene-Led03487-sp3	1.826429963	0.000128994
gene-Led03490-sp3	-0.59134758	0.005626059

gene-Led03515-sp3	0.533665053	0.001289918
gene-Led03534-sp3	-1.012955855	0.005443472
gene-Led03538-sp3	-1.043009035	0.000120072
gene-Led03547-sp3	1.20202213	0.002408302
gene-Led03557-sp3	-2.079595362	2.39E-11
gene-Led03570-sp3	-1.799976378	0.000000266
gene-Led03576-sp3	1.59900016	4.45E-11
gene-Led03596-sp3	-0.639540057	0.002008722
gene-Led03597-sp3	0.849758061	0.000194297
gene-Led03599-sp3	0.654572844	0.005972806
gene-Led03620-sp3	0.585558498	0.001717144
gene-Led03623-sp3	1.127562511	0.000119382
gene-Led03628-sp3	1.266164414	0.00000211
gene-Led03656-sp3	0.671022652	0.006557028
gene-Led03670-sp3	-1.016678288	0.00613838
gene-Led03682-sp3	-0.684192772	0.007336368
gene-Led03684-sp3	0.892479337	0.0080061
gene-Led03684-sp3	2.239919485	0.007762783
gene-Led03699-sp3	-1.899123125	0.001362675
gene-Led03702-sp3	1.291913893	0.000000298
gene-Led03708-sp3	1.02645596	0.007284315
gene-Led03712-sp3	0.952675954	0.00000606
gene-Led03736-sp3	1.680005705	0.000000124
gene-Led03745-sp3	-0.965465925	0.000100805
gene-Led03748-sp3	1.734551018	0.000271422
gene-Led03760-sp3	-2.193064264	0.000372525
gene-Led03765-sp3	-0.8598829	0.00000788
gene-Led03789-sp3	-2.451654798	0.000000297
gene-Led03811-sp3	0.695285277	0.000267845
gene-Led03820-sp3	1.129019601	0.0000435
gene-Led03839-sp3	1.458088343	0.0000928
gene-Led03840-sp3	0.881236676	0.00476174
gene-Led03841-sp3	-0.984918819	0.0000275
gene-Led03842-sp3	-2.972462341	4.3E-13
gene-Led03850-sp3	-0.707584617	0.000228298
gene-Led03859-sp3	0.70340981	0.000787307
gene-Led03871-sp3	0.673491197	0.000202368
gene-Led03878-sp3	0.427232563	0.006971124
gene-Led03886-sp3	1.461102463	1.69E-12
gene-Led03887-sp3	1.118354464	1.88E-08
gene-Led03888-sp3	1.452898227	7.13E-14
gene-Led03889-sp3	0.478960119	0.00181928
gene-Led03890-sp3	0.468245993	0.001255794
gene-Led03896-sp3	1.722691664	7.31E-12

gene-Led03897-sp3	-1.58376794	7.11E-11
gene-Led03898-sp3	-1.00077261	3.39E-10
gene-Led03899-sp3	0.655747252	0.004833205
gene-Led03907-sp3	1.289909543	0.000151112
gene-Led03908-sp3	2.215181614	0.002062558
gene-Led03916-sp3	1.186762684	0.009093284
gene-Led03922-sp3	1.229527696	0.000492429
gene-Led03929-sp3	-1.512779978	0.005331892
gene-Led03932-sp3	-2.566750245	3.9E-13
gene-Led03934-sp3	0.490256805	0.005926559
gene-Led03965-sp3	2.357949588	0.000280775
gene-Led03968-sp3	-0.927469045	0.004358891
gene-Led03985-sp3	-0.520200512	0.001474266
gene-Led03989-sp3	0.975511981	0.000449382
gene-Led04039-sp3	0.587855139	0.000207048
gene-Led04040-sp3	0.642815608	0.000410883
gene-Led04046-sp3	-0.600040438	0.005183418
gene-Led04057-sp3	0.608382296	0.004871305
gene-Led04058-sp3	0.824922822	0.000871113
gene-Led04062-sp3	-0.830962538	0.000874807
gene-Led04117-sp3	1.358158209	0.002293969
gene-Led04121-sp3	-1.890743279	4.99E-14
gene-Led04123-sp3	-1.113752272	0.000234982
gene-Led04128-sp3	1.172076668	0.00000133
gene-Led04131-sp3	-2.369017177	3.39E-08
gene-Led04139-sp3	-0.770466962	0.003214681
gene-Led04147-sp3	0.759131238	0.005647993
gene-Led04157-sp3	1.287226321	0.0000673
gene-Led04164-sp3	0.827354096	0.002679177
gene-Led04170-sp3	-1.084463284	0.004890638
gene-Led04171-sp3	-0.839539289	0.001827921
gene-Led04173-sp3	0.673486955	0.003412538
gene-Led04193-sp3	0.758002315	0.001879363
gene-Led04203-sp3	1.442121234	2.29E-10
gene-Led04215-sp3	-0.757112735	0.006702296
gene-Led04227-sp3	0.892867229	0.000165811
gene-Led04228-sp3	0.929173627	0.00233066
gene-Led04260-sp3	-0.996040834	0.00257951
gene-Led04261-sp3	-1.394582037	0.00000687
gene-Led04270-sp3	1.976556609	0.000402325
gene-Led04270-sp3	1.077564726	0.003819793
gene-Led04279-sp3	-3.99216576	1.34E-39
gene-Led04282-sp3	2.144270547	1.32E-09
gene-Led04285-sp3	-0.674803413	0.001551767

gene-Led04286-sp3	0.523240824	0.002180186
gene-Led04295-sp3	0.601869484	0.006758934
gene-Led04310-sp3	-2.393788595	0.0000041
gene-Led04322-sp3	0.744387527	0.000000206
gene-Led04323-sp3	0.614240723	0.000000715
gene-Led04329-sp3	0.869064998	0.006630708
gene-Led04336-sp3	-3.195800667	5.23E-10
gene-Led04345-sp3	-4.596093261	2.78E-15
gene-Led04348-sp3	1.441594657	0.000338317
gene-Led04351-sp3	-1.483706724	0.000535753
gene-Led04358-sp3	-0.777115125	0.00617359
gene-Led04362-sp3	0.724386811	0.000139706
gene-Led04363-sp3	0.767452468	0.000576638
gene-Led04364-sp3	0.529495787	0.001895405
gene-Led04370-sp3	-3.161569103	0.000216845
gene-Led04391-sp3	1.955009104	3.02E-13
gene-Led04402-sp3	0.676448298	0.0000777
gene-Led04429-sp3	-1.516790926	2.77E-13
gene-Led04444-sp3	-0.865086369	0.00056083
gene-Led04450-sp3	-0.976879186	0.009186028
gene-Led04463-sp3	0.913831891	0.000120562
gene-Led04471-sp3	-0.456849959	0.004426228
gene-Led04483-sp3	-3.200781462	3.88E-08
gene-Led04484-sp3	-3.467088136	0.0000572
gene-Led04499-sp3	2.460229229	1.09E-20
gene-Led04512-sp3	0.793236263	0.006357213
gene-Led04519-sp3	-1.415582826	0.00000197
gene-Led04523-sp3	0.464246012	0.000863449
gene-Led04557-sp3	0.733976923	0.004297177
gene-Led04558-sp3	1.488731413	0.00000101
gene-Led04559-sp3	0.573067001	0.008924978
gene-Led04560-sp3	0.782125204	0.0000173
gene-Led04562-sp3	-1.006342857	0.000289771
gene-Led04568-sp3	-1.209342458	0.0000119
gene-Led04569-sp3	0.639860371	0.0000106
gene-Led04592-sp3	-1.02537851	0.000954688
gene-Led04602-sp3	0.66294267	0.004351122
gene-Led04604-sp3	1.682900728	0.0000635
gene-Led04617-sp3	-3.674471279	3.28E-18
gene-Led04642-sp3	-0.97222246	0.000104271
gene-Led04649-sp3	-1.969256384	0.000000602
gene-Led04656-sp3	0.51091539	0.006291579
gene-Led04663-sp3	1.006664771	0.0000459
gene-Led04680-sp3	0.821290976	0.009199789

gene-Led04683-sp3	-5.982927662	1.32E-21
gene-Led04704-sp3	-0.63547437	0.008922933
gene-Led04755-sp3	1.032236914	3.03E-09
gene-Led04763-sp3	0.955174418	0.000117837
gene-Led04764-sp3	-0.680103832	0.000672889
gene-Led04771-sp3	1.294518875	0.00000718
gene-Led04796-sp3	-2.333665332	1.06E-08
gene-Led04806-sp3	-2.601382337	3.43E-10
gene-Led04816-sp3	-1.763378613	8.48E-08
gene-Led04817-sp3	-1.082779394	0.000000867
gene-Led04817-sp3	-0.809490447	0.0000588
gene-Led04882-sp3	-0.678402457	0.001138184
gene-Led04883-sp3	-0.915106157	0.004004534
gene-Led04911-sp3	-1.438602984	0.000918898
gene-Led04921-sp3	0.564930092	0.001346555
gene-Led04942-sp3	-0.548131423	0.009351982
gene-Led04945-sp3	-1.812424288	2.49E-17
gene-Led04946-sp3	-1.532034828	0.0000132
gene-Led04948-sp3	0.997711897	0.003628956
gene-Led04949-sp3	-1.285108146	2.36E-10
gene-Led04950-sp3	-0.867665036	0.00000813
gene-Led04955-sp3	1.223909335	8.1E-09
gene-Led04958-sp3	2.859878983	5.23E-22
gene-Led04959-sp3	1.48442019	0.000266292
gene-Led04960-sp3	1.424636467	0.000000796
gene-Led04968-sp3	0.466585652	0.008657436
gene-Led04975-sp3	-1.041478311	0.000000565
gene-Led04976-sp3	-1.661733732	0.000262847
gene-Led04982-sp3	0.547392805	0.001289219
gene-Led05015-sp3	-2.086354238	0.0048883
gene-Led05017-sp3	1.613176714	0.000000594
gene-Led05022-sp3	-4.466924298	4.95E-21
gene-Led05031-sp3	-0.996441325	0.002767612
gene-Led05036-sp3	-1.601487472	0.00000482
gene-Led05039-sp3	-1.865526841	0.000000356
gene-Led05049-sp3	0.891728313	0.000523434
gene-Led05054-sp3	2.418138246	0.003605228
gene-Led05056-sp3	1.401931148	0.00000701
gene-Led05062-sp3	-1.888457517	0.0000069
gene-Led05063-sp3	-2.514087088	3.07E-08
gene-Led05068-sp3	1.624337249	9.48E-09
gene-Led05069-sp3	0.55652376	0.004951833
gene-Led05082-sp3	0.847387794	0.004242001
gene-Led05085-sp3	0.455846772	0.003954807



gene-Led05087-sp3	2.194060195	0.00000631
gene-Led05094-sp3	0.894669981	0.001684767
gene-Led05095-sp3	-1.630659298	1.73E-11
gene-Led05098-sp3	0.474746129	0.002849504
gene-Led05099-sp3	0.617071819	0.00295085
gene-Led05105-sp3	-1.426905577	0.0000122
gene-Led05116-sp3	0.494253925	0.00424867
gene-Led05123-sp3	1.945526725	3.09E-08
gene-Led05126-sp3	-2.227370315	8.96E-08
gene-Led05130-sp3	-2.715465641	6.73E-26
gene-Led05133-sp3	-3.956665623	2.03E-12
gene-Led05139-sp3	1.404106716	0.000535701
gene-Led05144-sp3	0.932542509	0.000000204
gene-Led05169-sp3	0.864317651	0.006288025
gene-Led05176-sp3	1.172202398	0.001623494
gene-Led05203-sp3	-1.114057625	6.44E-10
gene-Led05207-sp3	-2.898823759	4.14E-12
gene-Led05223-sp3	0.667199777	0.002571661
gene-Led05224-sp3	-1.158927921	0.000318752
gene-Led05230-sp3	-0.77698188	0.00000821
gene-Led05248-sp3	0.635646629	0.00098636
gene-Led05265-sp3	-0.686722214	0.000477782
gene-Led05273-sp3	0.879376737	0.000129387
gene-Led05285-sp3	1.300072701	0.000422039
gene-Led05300-sp3	1.088170104	0.00000444
gene-Led05321-sp3	0.554666742	0.000323102
gene-Led05329-sp3	-0.821370618	0.0000216
gene-Led05331-sp3	0.598220351	0.001584572
gene-Led05340-sp3	1.097897215	1.1E-14
gene-Led05388-sp3	0.409113392	0.008890476
gene-Led05402-sp3	0.608570459	0.001318521
gene-Led05458-sp3	0.773095418	0.000023
gene-Led05462-sp3	-0.629670213	0.001069384
gene-Led05539-sp3	1.45544501	0.000022
gene-Led05540-sp3	0.814647441	0.000148788
gene-Led05558-sp3	-0.802765348	0.000688884
gene-Led05561-sp3	-1.126559985	0.000704178
gene-Led05570-sp3	2.704449644	9.39E-14
gene-Led05578-sp3	1.179002146	0.000476917
gene-Led05587-sp3	-0.840431117	0.004213177
gene-Led05589-sp3	-0.687071721	0.001461136
gene-Led05591-sp3	0.734574212	0.000885502
gene-Led05601-sp3	0.383722865	0.007158071
gene-Led05631-sp3	1.282152639	0.00012881

gene-Led05652-sp3	0.709593396	0.0000145
gene-Led05658-sp3	-1.470457959	0.000000999
gene-Led05669-sp3	0.442815306	0.00137781
gene-Led05686-sp3	0.556351796	0.001650508
gene-Led05693-sp3	-1.456127933	6.09E-09
gene-Led05698-sp3	-2.033052994	0.00000931
gene-Led05718-sp3	-1.75172034	0.0000256
gene-Led05719-sp3	0.772275416	0.0000923
gene-Led05728-sp3	1.933369396	1.01E-12
gene-Led05740-sp3	-0.658036635	0.004628869
gene-Led05743-sp3	0.74519546	0.005809117
gene-Led05747-sp3	-0.891149763	0.000598257
gene-Led05770-sp3	-1.651551911	2.94E-09
gene-Led05778-sp3	0.455445401	0.002109068
gene-Led05789-sp3	1.049702052	0.000000116
gene-Led05795-sp3	1.434121475	0.002074984
gene-Led05802-sp3	0.595771808	0.000105026
gene-Led05807-sp3	0.684662426	0.000590346
gene-Led05837-sp3	0.558040233	0.0004319
gene-Led05862-sp3	-0.748270362	0.000213294
gene-Led05864-sp3	0.777008309	2.19E-08
gene-Led05881-sp3	1.292327788	0.000000143
gene-Led05883-sp3	-0.496346298	0.007580422
gene-Led05887-sp3	-0.680493927	0.008706897
gene-Led05902-sp3	1.19803569	0.000151696
gene-Led05916-sp3	-0.681784437	0.000440792
gene-Led05919-sp3	0.734337187	0.004299181
gene-Led05934-sp3	0.869511602	0.000361969
gene-Led05940-sp3	-1.077742044	0.000000023
gene-Led05961-sp3	3.220563648	0.0000755
gene-Led05983-sp3	2.792105397	0.00098603
gene-Led05986-sp3	1.066081212	0.000056
gene-Led06007-sp3	0.843475918	0.004031366
gene-Led06015-sp3	1.218585517	0.006462665
gene-Led06029-sp3	1.563870501	0.000000179
gene-Led06031-sp3	-0.902259222	0.0000771
gene-Led06046-sp3	4.022083172	0.000581687
gene-Led06051-sp3	0.747591384	0.0016977
gene-Led06053-sp3	1.720815668	0.008824236
gene-Led06055-sp3	0.962695007	0.000374534
gene-Led06075-sp3	1.783943428	0.0000118
gene-Led06084-sp3	0.696806289	0.003919103
gene-Led06118-sp3	0.848787878	0.003285872
gene-Led06124-sp3	-1.574809382	4.33E-13

gene-Led06138-sp3	-1.016707804	0.000000172
gene-Led06142-sp3	-0.60869923	0.001925157
gene-Led06148-sp3	-2.173115303	0.00401513
gene-Led06149-sp3	-2.868235991	1.17E-28
gene-Led06150-sp3	-2.631309485	1.34E-24
gene-Led06162-sp3	-3.450613155	4.84E-08
gene-Led06165-sp3	1.327094296	2.27E-10
gene-Led06217-sp3	2.056331501	0.000387045
gene-Led06227-sp3	1.591223261	0.0000502
gene-Led06254-sp3	0.458584735	0.003159346
gene-Led06261-sp3	-1.286712258	0.0000914
gene-Led06265-sp3	-1.430851636	0.00000177
gene-Led06315-sp3	-1.122450237	0.000339705
gene-Led06338-sp3	3.431992586	1.01E-41
gene-Led06347-sp3	1.858600181	3.9E-15
gene-Led06349-sp3	1.135899608	0.001087584
gene-Led06356-sp3	1.315007354	0.003288051
gene-Led06363-sp3	0.67930194	0.000116149
gene-Led06365-sp3	0.606565427	0.003713694
gene-Led06367-sp3	-3.222968219	8.04E-08
gene-Led06391-sp3	-4.945684399	2.6E-72
gene-Led06391-sp3	-4.773953532	2.03E-39
gene-Led06391-sp3	-4.17205534	0.0000357
gene-Led06420-sp3	1.069383808	0.008599547
gene-Led06448-sp3	0.515553461	0.009331302
gene-Led06456-sp3	-1.022157985	0.0000288
gene-Led06464-sp3	1.244272026	0.0000276
gene-Led06477-sp3	-1.100386635	0.000827678
gene-Led06479-sp3	-1.072223464	0.004727081
gene-Led06483-sp3	-0.892548211	0.00000382
gene-Led06492-sp3	-0.859369991	0.000262391
gene-Led06514-sp3	-1.469575417	0.00000834
gene-Led06518-sp3	0.539628567	0.002235852
gene-Led06524-sp3	0.933119576	0.00000214
gene-Led06526-sp3	0.853561246	0.000103752
gene-Led06530-sp3	2.424252364	1.69E-14
gene-Led06546-sp3	4.023459759	2.43E-40
gene-Led06547-sp3	-1.675402492	0.0000459
gene-Led06561-sp3	-0.462806282	0.009111346
gene-Led06582-sp3	-2.372080926	2.71E-21
gene-Led06598-sp3	0.94078762	0.00000145
gene-Led06602-sp3	0.758809851	0.000124765
gene-Led06603-sp3	-1.692773393	0.000000825
gene-Led06637-sp3	0.644255282	0.00018522

gene-Led06642-sp3	1.683181773	0.000000154
gene-Led06646-sp3	0.748680605	0.0000003
gene-Led06661-sp3	0.528333511	0.003226647
gene-Led06674-sp3	0.691316992	0.000372868
gene-Led06679-sp3	-0.947865143	0.0000963
gene-Led06732-sp3	2.385085397	0.0000275
gene-Led06754-sp3	-0.807079629	0.002804069
gene-Led06772-sp3	1.510247575	0.00000165
gene-Led06782-sp3	1.391141785	0.00000896
gene-Led06798-sp3	-1.115896302	0.000757316
gene-Led06808-sp3	0.764158539	0.000293002
gene-Led06827-sp3	1.750280038	0.000091
gene-Led06842-sp3	0.610300866	0.003066184
gene-Led06846-sp3	1.012724766	0.0000022
gene-Led06848-sp3	2.758587885	0.0000003
gene-Led06850-sp3	3.664787297	8.95E-16
gene-Led06873-sp3	-1.170959154	2.47E-09
gene-Led06888-sp3	3.005360365	0.000000733
gene-Led06911-sp3	1.096616341	0.002751702
gene-Led06929-sp3	-0.646413494	0.000526346
gene-Led06931-sp3	1.188828358	0.000102499
gene-Led06950-sp3	0.640321562	0.001872095
gene-Led06957-sp3	1.396852481	1.01E-08
gene-Led06994-sp3	0.83106801	0.003024078
gene-Led06998-sp3	-1.272445604	0.000000371
gene-Led07008-sp3	-1.441916232	0.000000618
gene-Led07019-sp3	1.153848334	1.95E-08
gene-Led07041-sp3	-1.133348363	0.0000392
gene-Led07043-sp3	1.88836735	0.00000373
gene-Led07089-sp3	1.048617488	0.000000685
gene-Led07092-sp3	1.344869941	0.000107334
gene-Led07100-sp3	-2.491813055	4.4E-10
gene-Led07102-sp3	-3.642714145	2.59E-40
gene-Led07104-sp3	-0.770907789	0.000149597
gene-Led07136-sp3	-0.941320214	0.003405433
gene-Led07143-sp3	0.870648362	0.000197954
gene-Led07148-sp3	3.338820656	3.33E-11
gene-Led07155-sp3	-1.606228939	0.000000045
gene-Led07161-sp3	-1.632109357	0.00000429
gene-Led07180-sp3	2.096717498	1.47E-08
gene-Led07183-sp3	6.242175355	5.41E-08
gene-Led07201-sp3	-1.57330193	0.000013
gene-Led07204-sp3	2.181911974	7.26E-13
gene-Led07205-sp3	0.728660597	0.008307348

gene-Led07210-sp3	1.215557569	0.000000362
gene-Led07217-sp3	1.642073143	1.59E-08
gene-Led07218-sp3	1.27886016	0.000000443
gene-Led07222-sp3	1.109690244	0.0000152
gene-Led07224-sp3	1.794544176	2.31E-11
gene-Led07234-sp3	-0.58274189	0.003169862
gene-Led07275-sp3	0.838970103	8.86E-08
gene-Led07300-sp3	1.487864397	2.56E-12
gene-Led07306-sp3	1.680078701	0.00502088
gene-Led07313-sp3	-0.774346664	0.007054276
gene-Led07334-sp3	0.128657559	0.000215389
gene-Led07334-sp3	-0.523186855	0.003545859
gene-Led07345-sp3	2.318045092	3.48E-14
gene-Led07360-sp3	1.996931081	0.0000154
gene-Led07362-sp3	0.493941828	0.00437805
gene-Led07388-sp3	0.665042084	0.002410772
gene-Led07391-sp3	-1.538331787	0.000000555
gene-Led07397-sp3	0.669624467	0.00296859
gene-Led07404-sp3	-2.739799168	1.63E-09
gene-Led07405-sp3	0.488794225	0.005985058
gene-Led07419-sp3	0.840837628	0.000407095
gene-Led07430-sp3	1.359903614	0.004995175
gene-Led07465-sp3	0.678235526	0.000304844
gene-Led07476-sp3	0.510421473	0.004515098
gene-Led07486-sp3	-0.452908454	0.005122716
gene-Led07489-sp3	0.612634573	0.000405576
gene-Led07495-sp3	-0.632959361	0.000177117
gene-Led07502-sp3	0.740018816	0.00004
gene-Led07506-sp3	-0.512730546	0.009567711
gene-Led07517-sp3	-0.509042969	0.008777401
gene-Led07525-sp3	-0.869807563	0.0000128
gene-Led07526-sp3	2.994588086	0.00000145
gene-Led07546-sp3	0.569270361	0.000972056
gene-Led07568-sp3	0.474333271	0.006168021
gene-Led07587-sp3	-0.778944866	0.001483827
gene-Led07592-sp3	2.469887673	2.43E-18
gene-Led07595-sp3	-4.614646538	7.79E-46
gene-Led07596-sp3	-0.991345016	0.001909197
gene-Led07626-sp3	1.00587288	0.000000875
gene-Led07637-sp3	0.524274854	0.003689528
gene-Led07646-sp3	-0.72268659	0.0000742
gene-Led07695-sp3	0.783757475	0.00000414
gene-Led07697-sp3	2.72157644	6.99E-11
gene-Led07706-sp3	1.070513476	0.000907998

gene-Led07713-sp3	-1.111116028	0.000215808
gene-Led07718-sp3	0.509287459	0.007154559
gene-Led07720-sp3	0.459338728	0.005092498
gene-Led07738-sp3	0.675549738	0.000715637
gene-Led07742-sp3	0.842675243	0.007680125
gene-Led07744-sp3	-2.113263991	0.0000178
gene-Led07758-sp3	1.867503057	0.000167873
gene-Led07765-sp3	0.50594749	0.005620196
gene-Led07782-sp3	-1.619623829	0.00000382
gene-Led07788-sp3	0.796290365	0.0000689
gene-Led07836-sp3	0.578015293	0.0012998
gene-Led07845-sp3	1.034728172	0.000000929
gene-Led07856-sp3	0.910623195	0.002349751
gene-Led07861-sp3	-0.617834978	0.004362134
gene-Led07862-sp3	0.790267062	0.000000501
gene-Led07864-sp3	-0.715409245	0.001605802
gene-Led07866-sp3	0.586877546	0.000668408
gene-Led07898-sp3	0.768266732	0.00546115
gene-Led07904-sp3	-0.629914659	0.000864371
gene-Led07908-sp3	1.243503896	0.00000686
gene-Led07916-sp3	0.732743654	0.000103412
gene-Led07917-sp3	1.519164244	0.000000789
gene-Led07958-sp3	-1.225315028	0.0000653
gene-Led07979-sp3	0.692438668	0.000073
gene-Led08009-sp3	0.443395154	0.005172368
gene-Led08015-sp3	0.622782346	0.006435999
gene-Led08026-sp3	-1.706241564	0.0000592
gene-Led08036-sp3	0.663124822	0.002337513
gene-Led08044-sp3	0.386227522	0.006245175
gene-Led08055-sp3	0.513333152	0.007810177
gene-Led08072-sp3	-1.142667823	0.001266076
gene-Led08110-sp3	0.934672805	0.00000257
gene-Led08112-sp3	0.524448826	0.005948932
gene-Led08165-sp3	1.921514074	0.000297167
gene-Led08168-sp3	1.937678585	0.000000305
gene-Led08169-sp3	0.817662297	0.000116572
gene-Led08177-sp3	1.028742074	0.007903234
gene-Led08181-sp3	1.281513416	0.00033334
gene-Led08184-sp3	2.053807066	5.61E-19
gene-Led08187-sp3	2.120769366	5.32E-08
gene-Led08195-sp3	1.653394542	0.002023439
gene-Led08200-sp3	1.354151878	0.0000113
gene-Led08203-sp3	-0.521164408	0.00183929
gene-Led08210-sp3	1.280328486	0.000000023

gene-Led08217-sp3	-3.355995021	3.86E-20
gene-Led08218-sp3	-2.552982442	1.01E-16
gene-Led08224-sp3	2.279154129	0.00000595
gene-Led08238-sp3	1.710411227	0.000000173
gene-Led08257-sp3	-1.710447182	0.000013
gene-Led08281-sp3	0.603022267	0.000407852
gene-Led08389-sp3	-0.915412961	0.0000507
gene-Led08422-sp3	-0.653204678	0.009898437
gene-Led08431-sp3	0.843638578	0.00000124
gene-Led08432-sp3	0.74076322	0.000202712
gene-Led08448-sp3	1.773336691	8.83E-14
gene-Led08460-sp3	-3.487333834	6.28E-15
gene-Led08464-sp3	-0.868957262	0.009594897
gene-Led08465-sp3	-0.819437782	0.001731718
gene-Led08483-sp3	2.416970745	0.000317048
gene-Led08489-sp3	0.874103051	0.000195772
gene-Led08508-sp3	0.555836667	0.000803582
gene-Led08516-sp3	0.964048846	0.00000949
gene-Led08569-sp3	-1.548090347	0.000000129
gene-Led08597-sp3	-0.603388148	0.002932794
gene-Led08608-sp3	-2.844143693	0.0000269
gene-Led08610-sp3	0.871039507	0.000589553
gene-Led08622-sp3	-3.814135825	6.02E-32
gene-Led08624-sp3	-5.330798719	1.25E-14
gene-Led08625-sp3	-2.507051345	6.57E-13
gene-Led08636-sp3	-1.832683793	2.2E-11
gene-Led08645-sp3	-1.59187156	0.00000405
gene-Led08657-sp3	1.730032454	0.001840169
gene-Led08658-sp3	1.990078029	0.00000353
gene-Led08658-sp3	1.609766993	0.00300507
gene-Led08659-sp3	1.084324857	0.000430766
gene-Led08669-sp3	0.733786935	0.001108212
gene-Led08682-sp3	1.558897969	0.000000254
gene-Led08683-sp3	0.733496053	0.000181735
gene-Led08690-sp3	-1.584544563	0.000529951
gene-Led08695-sp3	-0.817654285	0.007386204
gene-Led08706-sp3	-1.824012242	8.52E-08
gene-Led08715-sp3	-0.725313269	0.001880887
gene-Led08733-sp3	-0.90064897	0.000251502
gene-Led08734-sp3	-3.737501512	5.61E-17
gene-Led08742-sp3	-1.360063994	0.001922743
gene-Led08744-sp3	1.245249578	0.00066553
gene-Led08745-sp3	-0.496075956	0.002694418
gene-Led08757-sp3	-1.383802018	1.36E-08

gene-Led08786-sp3	-0.603385675	0.005545343
gene-Led08827-sp3	-0.919359298	0.000000026
gene-Led08839-sp3	-0.967640346	0.004680694
gene-Led08840-sp3	-1.161902218	0.002718315
gene-Led08870-sp3	0.806498257	0.007904412
gene-Led08877-sp3	-1.081518213	3.12E-09
gene-Led08878-sp3	0.73197062	0.00000581
gene-Led08885-sp3	-0.749735713	0.000920683
gene-Led08887-sp3	0.490775469	0.000285214
gene-Led08896-sp3	-1.40195914	0.000207663
gene-Led08924-sp3	1.495757833	0.00000895
gene-Led08945-sp3	-1.073319547	0.004065415
gene-Led08999-sp3	-1.337951859	8.07E-10
gene-Led09023-sp3	0.814654447	0.000650674
gene-Led09039-sp3	0.760096214	0.003999075
gene-Led09044-sp3	0.621256096	0.000979941
gene-Led09054-sp3	-0.823001894	0.00000345
gene-Led09059-sp3	-1.045520738	0.00000151
gene-Led09068-sp3	0.935063182	0.000166464
gene-Led09096-sp3	0.993164611	5.52E-08
gene-Led09126-sp3	-1.072071279	0.0000111
gene-Led09145-sp3	0.745676062	0.005654548
gene-Led09160-sp3	-0.711999026	0.006030245
gene-Led09161-sp3	-1.676816424	0.000000995
gene-Led09163-sp3	0.55660616	0.001302742
gene-Led09175-sp3	0.922090082	0.0000111
gene-Led09177-sp3	1.712560791	0.001941961
gene-Led09201-sp3	0.878169967	0.0000902
gene-Led09207-sp3	0.557577492	0.001014437
gene-Led09216-sp3	0.542650894	0.003422605
gene-Led09248-sp3	0.818305533	0.0000622
gene-Led09252-sp3	0.696485457	0.001037738
gene-Led09255-sp3	0.731777497	0.004017787
gene-Led09259-sp3	0.918553533	0.00153992
gene-Led09264-sp3	0.518476695	0.002419869
gene-Led09270-sp3	-1.310725203	0.00000215
gene-Led09275-sp3	0.586283407	0.000603
gene-Led09277-sp3	-0.989398628	0.002647685
gene-Led09291-sp3	0.510267001	0.003324884
gene-Led09311-sp3	1.009432242	0.004931147
gene-Led09321-sp3	0.628582576	0.009480953
gene-Led09364-sp3	-0.994858995	0.001499443
gene-Led09371-sp3	0.705443616	0.0000105
gene-Led09374-sp3	1.56212788	0.003477128



gene-Led09378-sp3	2.178915299	0.0000463
gene-Led09386-sp3	-1.747355696	0.001410528
gene-Led09411-sp3	-0.720406537	0.0078772
gene-Led09418-sp3	1.489727659	7.53E-09
gene-Led09420-sp3	-1.046495899	0.000894303
gene-Led09424-sp3	0.949400583	0.000326835
gene-Led09430-sp3	1.016733314	8.74E-11
gene-Led09431-sp3	1.051372756	0.000000642
gene-Led09437-sp3	0.929519439	4.46E-08
gene-Led09438-sp3	0.867158461	4.73E-10
gene-Led09446-sp3	0.736590424	0.001590482
gene-Led09450-sp3	-0.79040274	0.000474932
gene-Led09462-sp3	-1.459485228	0.001583837
gene-Led09479-sp3	-1.027165312	0.000142917
gene-Led09499-sp3	0.818219897	0.001337484
gene-Led09516-sp3	0.68948712	0.000802499
gene-Led09519-sp3	-1.187218291	0.000275717
gene-Led09543-sp3	0.846679842	0.004514698
gene-Led09557-sp3	-1.743569143	4.74E-08
gene-Led09577-sp3	-1.904626272	0.00000191
gene-Led09598-sp3	-0.579268867	0.00672637
gene-Led09604-sp3	0.769204748	0.0000521
gene-Led09616-sp3	-1.62888998	0.00000172
gene-Led09617-sp3	-1.442619109	2.55E-09
gene-Led09635-sp3	1.930178167	0.002697809
gene-Led09680-sp3	0.847464558	0.000437673
gene-Led09685-sp3	1.138089794	0.000740811
gene-Led09696-sp3	-0.987763444	1.36E-09
gene-Led09711-sp3	0.74546439	0.006733237
gene-Led09714-sp3	0.720417198	0.00674793
gene-Led09763-sp3	0.691473974	0.00000954
gene-Led09806-sp3	1.930821767	0.001788275
gene-Led09812-sp3	-1.108262202	0.000522916
gene-Led09813-sp3	-1.092733325	0.000245312
gene-Led09825-sp3	0.690341381	0.000162536
gene-Led09836-sp3	1.375267198	0.0000317
gene-Led09839-sp3	-0.448483221	0.005032073
gene-Led09846-sp3	-0.611059961	0.000774882
gene-Led09866-sp3	0.531145498	0.003838267
gene-Led09880-sp3	-0.679028298	0.00711465
gene-Led09885-sp3	-1.070847551	0.0000102
gene-Led09897-sp3	0.992474917	0.005676677
gene-Led09997-sp3	1.997267878	0.002210869
gene-Led10005-sp3	1.797943734	0.000107839

gene-Led10006-sp3	2.245954928	3.76E-09
gene-Led10016-sp3	0.539590817	0.004264417
gene-Led10034-sp3	-0.660377158	0.000531656
gene-Led10046-sp3	-1.119399951	0.00000514
gene-Led10050-sp3	0.972868077	0.0000134
gene-Led10065-sp3	1.08180845	0.0000128
gene-Led10088-sp3	0.568664605	0.00616023
gene-Led10099-sp3	-1.386516351	0.0000743
gene-Led10102-sp3	0.490171919	0.002828294
gene-Led10108-sp3	2.128231983	0.002663661
gene-Led10111-sp3	0.61824521	0.003894154
gene-Led10121-sp3	0.88255838	0.001156467
gene-Led10122-sp3	0.573536023	0.003747512
gene-Led10123-sp3	0.94807715	5.62E-08
gene-Led10145-sp3	-0.543435016	0.000722332
gene-Led10158-sp3	-0.502124982	0.00620474
gene-Led10163-sp3	0.948224492	0.002190991
gene-Led10175-sp3	-1.537823967	0.001534419
gene-Led10175-sp3	-5.580098194	0.0000471
gene-Led10176-sp3	0.650122364	0.001065526
gene-Led10184-sp3	1.845958219	2.99E-10
gene-Led10205-sp3	0.534240356	0.00126666
gene-Led10225-sp3	0.817101405	0.0000784
gene-Led10228-sp3	-1.077001623	0.0000374
gene-Led10235-sp3	-3.813696675	0.000000721
gene-Led10238-sp3	-1.71812405	0.000294952
gene-Led10246-sp3	1.667812723	1.32E-21
gene-Led10299-sp3	-0.915582021	0.004298376
gene-Led10300-sp3	-1.269870761	0.000269646
gene-Led10303-sp3	-1.212482566	0.000748245
gene-Led10312-sp3	2.077856978	1.17E-08
gene-Led10316-sp3	2.054330269	2.19E-09
gene-Led10321-sp3	-1.565266231	0.000305829
gene-Led10322-sp3	2.137182068	0.0000136
gene-Led10323-sp3	-1.77792436	0.000000718
gene-Led10329-sp3	0.84437723	0.001916538
gene-Led10330-sp3	0.718048471	0.00304364
gene-Led10340-sp3	1.443778908	0.0000225
gene-Led10344-sp3	-0.963329186	0.001566625
gene-Led10352-sp3	-1.517839263	0.001658192
gene-Led10354-sp3	0.890641312	0.001704489
gene-Led10375-sp3	-0.818966374	0.0000481
gene-Led10376-sp3	-1.219896012	0.00000759
gene-Led10469-sp3	0.420210753	0.007031605

gene-Led10477-sp3	1.405193441	0.000132932
gene-Led10479-sp3	2.442586074	5.32E-15
gene-Led10482-sp3	-1.180574007	0.000867451
gene-Led10483-sp3	-3.103696063	5.42E-17
gene-Led10484-sp3	-2.80759502	1.85E-26
gene-Led10490-sp3	-1.601503273	0.000000307
gene-Led10492-sp3	-1.260024801	2.73E-08
gene-Led10526-sp3	-1.931456989	5.58E-14
gene-Led10530-sp3	0.841469358	0.000482478
gene-Led10531-sp3	-1.998705187	7.36E-19
gene-Led10551-sp3	1.276397662	0.005180956
gene-Led10555-sp3	-2.965314897	1.47E-23
gene-Led10567-sp3	0.835139993	0.000370752
gene-Led10581-sp3	2.789020595	0.0000852
gene-Led10588-sp3	0.86948554	0.000000662
gene-Led10596-sp3	-0.945078276	0.006594021
gene-Led10615-sp3	-0.37750264	0.009932571
gene-Led10621-sp3	2.449999751	0.0000148
gene-Led10627-sp3	-0.715301562	0.001296543
gene-Led10631-sp3	0.566899955	0.003096593
gene-Led10639-sp3	0.93694814	0.000772787
gene-Led10643-sp3	0.775801923	0.000087
gene-Led10683-sp3	-0.706799225	0.005199946
gene-Led10690-sp3	-1.269800064	4.13E-08
gene-Led10693-sp3	0.965337187	0.001975686
gene-Led10728-sp3	-0.531004941	0.001569526
gene-Led10733-sp3	0.584706006	0.004264479
gene-Led10735-sp3	1.108950642	1.34E-08
gene-Led10745-sp3	0.448573589	0.009507922
gene-Led10763-sp3	-0.877674758	0.0000965
gene-Led10765-sp3	-0.805240852	0.00000711
gene-Led10768-sp3	0.750790663	0.000369029
gene-Led10771-sp3	-1.026964344	0.0000117
gene-Led10800-sp3	-1.794501518	0.003013945
gene-Led10808-sp3	-2.010170851	0.0000398
gene-Led10875-sp3	1.212402527	5.92E-08
gene-Led10879-sp3	0.728034418	0.0000699
gene-Led10897-sp3	1.487026698	0.000000381
gene-Led10913-sp3	2.653673574	0.0000402
gene-Led10925-sp3	1.082347099	0.0000101
gene-Led10927-sp3	2.247854762	2.58E-08
gene-Led10936-sp3	0.600265851	0.004104367
gene-Led10998-sp3	0.96203441	0.0000659
gene-Led11014-sp3	1.067653057	1.06E-08

gene-Led11016-sp3	-0.92899682	0.000298742
gene-Led11023-sp3	1.766167341	0.000123704
gene-Led11048-sp3	-1.673306805	0.002352296
gene-Led11071-sp3	-2.193064264	0.000372525
gene-Led11086-sp3	0.840951646	0.00796871
gene-Led11091-sp3	1.227972556	0.0000793
gene-Led11122-sp3	-4.466924298	4.95E-21
gene-Led11139-sp3	1.107791806	0.000046
gene-Led11182-sp3	-0.8172673	0.0000117
gene-Led11190-sp3	0.533848916	0.001541775
gene-Led11194-sp3	1.901426183	0.000368429
gene-Led11203-sp3	-2.566750245	3.9E-13
gene-Led11211-sp3	-1.206727334	0.00000244
gene-Led11212-sp3	1.069383808	0.008599547
gene-Led11234-sp3	3.049616694	7.47E-23
gene-Led11235-sp3	1.108462569	0.000563881
gene-Led11264-sp3	1.105317448	0.000452148
gene-Led11282-sp3	2.805171565	6.18E-20
gene-Led11319-sp3	1.015954252	0.000120327
gene-Led11377-sp3	0.619572084	0.004926146
gene-Led11436-sp3	0.769204748	0.0000521
gene-Led11455-sp3	-0.973883168	0.003755948

---

**Table S5 DEG lists of LeHH24h vs LeHH3h**

<b>gene</b>	<b>log2FoldChange</b>	<b>pvalue</b>
gene-Led00032-sp3	-1.716464558	0.000106358
gene-Led00043-sp3	-0.997967164	0.002817814
gene-Led00044-sp3	-1.063860636	0.001480089
gene-Led00074-sp3	1.355450924	0.003968985
gene-Led00092-sp3	0.614969736	0.002869433
gene-Led00095-sp3	-1.203303645	7.05234E-06
gene-Led00117-sp3	0.590025564	0.008381992
gene-Led00122-sp3	1.021275877	0.003341465
gene-Led00127-sp3	-2.755919908	3.73204E-23
gene-Led00129-sp3	-0.562019629	0.000615504
gene-Led00130-sp3	-2.341640867	1.25128E-06
gene-Led00165-sp3	-0.861095482	5.38988E-05
gene-Led00180-sp3	-0.719376102	0.003023219
gene-Led00196-sp3	-0.871278247	0.003732149
gene-Led00211-sp3	1.021686677	0.000178454
gene-Led00241-sp3	-0.491194818	0.004347572
gene-Led00256-sp3	1.137215765	0.000350336
gene-Led00287-sp3	-1.099243708	6.81418E-07
gene-Led00312-sp3	1.616370121	7.60418E-05
gene-Led00336-sp3	-0.775081374	0.001745396
gene-Led00345-sp3	2.549400749	6.60188E-06
gene-Led00395-sp3	-1.255702567	9.64569E-05
gene-Led00446-sp3	-0.792286403	4.64172E-07
gene-Led00452-sp3	-0.63593129	0.001574232
gene-Led00457-sp3	0.625600054	0.009395371
gene-Led00473-sp3	1.014348318	0.004620633
gene-Led00481-sp3	-0.607752819	0.002793567
gene-Led00484-sp3	-0.505167619	0.002935841
gene-Led00487-sp3	-0.492924462	0.003703391
gene-Led00488-sp3	-0.634621425	0.000643326
gene-Led00498-sp3	1.851583741	1.44195E-05
gene-Led00518-sp3	0.804009042	0.001886901
gene-Led00546-sp3	-0.49095476	0.00842954
gene-Led00547-sp3	0.662195798	0.004334512
gene-Led00552-sp3	-1.789534614	1.46269E-12
gene-Led00553-sp3	-0.816789836	0.001663816
gene-Led00561-sp3	-0.79618126	0.000662476
gene-Led00566-sp3	1.003708608	3.90755E-05
gene-Led00576-sp3	1.103143698	1.79782E-05
gene-Led00588-sp3	2.160904831	1.46472E-22
gene-Led00590-sp3	1.440001518	4.56987E-05
gene-Led00619-sp3	1.134153234	3.59428E-07

gene-Led00647-sp3	-2.084032588	1.95085E-20
gene-Led00649-sp3	-0.727146548	0.001158677
gene-Led00674-sp3	-0.58203015	0.001871654
gene-Led00680-sp3	1.703287782	5.01126E-16
gene-Led00683-sp3	-2.190896476	6.09954E-05
gene-Led00709-sp3	3.698918697	2.63552E-08
gene-Led00718-sp3	-0.704514063	0.000782845
gene-Led00727-sp3	0.887330869	0.002913291
gene-Led00734-sp3	3.61267099	4.3916E-06
gene-Led00741-sp3	2.90566424	2.93506E-05
gene-Led00742-sp3	0.711313884	0.005254305
gene-Led00754-sp3	1.302716041	2.57833E-08
gene-Led00777-sp3	0.779114679	1.72424E-05
gene-Led00801-sp3	1.368241351	7.67347E-06
gene-Led00803-sp3	0.466451691	0.00836403
gene-Led00823-sp3	-5.882022805	1.97287E-05
gene-Led00848-sp3	-0.928002297	0.001081272
gene-Led00865-sp3	-0.594207518	0.000382155
gene-Led00874-sp3	-0.660337366	0.003999704
gene-Led00883-sp3	1.689699223	8.14861E-07
gene-Led00902-sp3	-2.796710554	1.21378E-42
gene-Led00903-sp3	-1.52424143	2.63819E-11
gene-Led00903-sp3	-1.549090484	7.02398E-07
gene-Led00904-sp3	-3.391054925	3.17283E-11
gene-Led00905-sp3	-3.281519208	1.39479E-50
gene-Led00906-sp3	-2.014416397	1.77216E-20
gene-Led00907-sp3	-3.884326819	9.74899E-30
gene-Led00907-sp3	-2.254661949	7.75573E-10
gene-Led00908-sp3	-1.315011368	1.50856E-09
gene-Led00909-sp3	-1.424355373	5.25946E-07
gene-Led00910-sp3	-2.164865842	3.8439E-34
gene-Led00911-sp3	-1.505521708	0.001224366
gene-Led00912-sp3	-3.681680696	1.78493E-08
gene-Led00918-sp3	2.26237869	2.33048E-06
gene-Led00926-sp3	2.459129287	9.85121E-08
gene-Led00929-sp3	-1.431837373	1.76685E-05
gene-Led00934-sp3	0.70639732	0.003805375
gene-Led00953-sp3	0.883803944	0.002351785
gene-Led00958-sp3	0.706045191	0.004404376
gene-Led00964-sp3	0.590531868	0.006962922
gene-Led00965-sp3	-0.487790343	0.009991135
gene-Led00983-sp3	0.978142104	0.005768076
gene-Led01009-sp3	0.807690905	0.001792685
gene-Led01037-sp3	1.540036982	0.00120251

gene-Led01085-sp3	0.51651761	0.003073956
gene-Led01098-sp3	-0.909720314	0.00012739
gene-Led01114-sp3	0.483696816	0.001337716
gene-Led01116-sp3	1.244172639	9.15608E-08
gene-Led01127-sp3	-0.471713873	0.005867332
gene-Led01128-sp3	-0.736318619	5.5696E-06
gene-Led01141-sp3	-0.698763728	0.006844689
gene-Led01142-sp3	0.780564648	0.000308583
gene-Led01166-sp3	2.468407498	5.55362E-12
gene-Led01172-sp3	-0.670953136	0.006027351
gene-Led01180-sp3	-1.823317634	2.02353E-05
gene-Led01180-sp3	-1.537770875	4.25003E-05
gene-Led01188-sp3	0.931882131	0.006057234
gene-Led01196-sp3	1.854230563	1.10817E-05
gene-Led01201-sp3	-2.353524978	4.15209E-14
gene-Led01207-sp3	-0.56359016	0.002350304
gene-Led01218-sp3	-1.179773271	2.29747E-09
gene-Led01221-sp3	-0.697587695	2.71954E-05
gene-Led01245-sp3	-0.972796366	1.37591E-06
gene-Led01248-sp3	1.03039838	0.002251794
gene-Led01254-sp3	0.649971581	0.000412472
gene-Led01265-sp3	3.204783988	0.000546408
gene-Led01267-sp3	-1.17118334	0.000589457
gene-Led01274-sp3	0.633157351	0.000139593
gene-Led01276-sp3	2.191635978	7.59458E-34
gene-Led01279-sp3	0.593844269	0.004192933
gene-Led01302-sp3	3.164139345	6.67081E-07
gene-Led01305-sp3	0.518740707	0.006905094
gene-Led01312-sp3	1.509506085	1.48109E-06
gene-Led01325-sp3	-4.838011107	1.23629E-65
gene-Led01330-sp3	-0.634112334	0.001278767
gene-Led01338-sp3	-1.073241965	1.02299E-07
gene-Led01347-sp3	2.485376335	9.36212E-14
gene-Led01354-sp3	0.991549154	0.006869015
gene-Led01359-sp3	2.409658554	5.24921E-11
gene-Led01379-sp3	1.220963231	0.000122668
gene-Led01383-sp3	-0.514830457	0.006369405
gene-Led01400-sp3	0.464559546	0.009198308
gene-Led01407-sp3	-1.400482993	0.000102593
gene-Led01431-sp3	1.090871164	9.87619E-05
gene-Led01439-sp3	1.058092316	0.002066928
gene-Led01443-sp3	-1.175464654	0.001218148
gene-Led01458-sp3	1.599987621	8.15737E-09
gene-Led01472-sp3	1.230094078	2.42569E-07

gene-Led01474-sp3	0.919721509	0.003002733
gene-Led01483-sp3	-2.056082174	0.00037901
gene-Led01492-sp3	-1.367764623	3.07299E-05
gene-Led01498-sp3	1.148761356	5.77318E-06
gene-Led01536-sp3	-2.252985311	2.92875E-26
gene-Led01537-sp3	2.283737485	2.6864E-05
gene-Led01538-sp3	4.927701713	1.3464E-79
gene-Led01539-sp3	1.940358964	4.11021E-12
gene-Led01543-sp3	-0.547421475	0.006030843
gene-Led01550-sp3	1.274132734	5.1584E-07
gene-Led01557-sp3	3.73181655	1.97225E-05
gene-Led01557-sp3	3.766812803	0.000243581
gene-Led01567-sp3	2.734298119	3.76071E-24
gene-Led01568-sp3	0.774271973	4.983E-05
gene-Led01571-sp3	-0.914248844	0.006783755
gene-Led01573-sp3	-0.640124547	2.09911E-05
gene-Led01578-sp3	-2.272079296	5.61155E-12
gene-Led01608-sp3	-0.66222948	2.63012E-05
gene-Led01619-sp3	-0.743374806	0.000117117
gene-Led01630-sp3	3.182377301	4.2688E-43
gene-Led01634-sp3	-1.283728534	1.25304E-06
gene-Led01659-sp3	-1.983142425	8.99297E-06
gene-Led01665-sp3	-0.678227348	4.72488E-05
gene-Led01667-sp3	-0.757938068	0.000634751
gene-Led01670-sp3	0.612032317	0.001444125
gene-Led01673-sp3	-1.378098853	5.22302E-08
gene-Led01693-sp3	1.617623474	0.001370396
gene-Led01718-sp3	-2.40729298	2.94644E-17
gene-Led01721-sp3	-0.569288784	0.000169453
gene-Led01763-sp3	1.958037565	1.79148E-06
gene-Led01764-sp3	4.802537618	2.90531E-56
gene-Led01765-sp3	6.387544245	2.21301E-40
gene-Led01766-sp3	0.924927112	0.00777099
gene-Led01767-sp3	1.099234336	6.31365E-07
gene-Led01769-sp3	-0.508130908	0.008433023
gene-Led01793-sp3	0.770370408	0.005856614
gene-Led01797-sp3	1.085544063	2.61794E-06
gene-Led01806-sp3	1.463950531	4.89525E-08
gene-Led01832-sp3	0.898881852	0.000894154
gene-Led01859-sp3	2.573581942	7.06207E-11
gene-Led01902-sp3	-0.663025209	0.000342826
gene-Led01916-sp3	-1.069130228	5.16304E-09
gene-Led01926-sp3	-0.645943521	0.000951947
gene-Led01935-sp3	-0.783968614	7.31694E-05



gene-Led01940-sp3	0.809076141	0.000225404
gene-Led01960-sp3	-0.78992715	5.00298E-05
gene-Led01973-sp3	0.878789305	0.00378887
gene-Led01978-sp3	-3.548779333	1.27813E-06
gene-Led02016-sp3	2.119305397	4.09072E-15
gene-Led02021-sp3	1.862868093	4.15891E-05
gene-Led02047-sp3	-0.800360735	2.3235E-05
gene-Led02054-sp3	0.960974216	0.001799291
gene-Led02063-sp3	0.615984437	0.002229426
gene-Led02111-sp3	1.578178926	8.957E-09
gene-Led02118-sp3	-0.40715274	0.006010087
gene-Led02123-sp3	-0.699978223	0.000172722
gene-Led02127-sp3	-0.550614571	0.001428114
gene-Led02135-sp3	-0.865364397	0.000516078
gene-Led02157-sp3	0.679613812	0.001340323
gene-Led02158-sp3	-0.439376012	0.004463994
gene-Led02190-sp3	0.856717437	0.000141953
gene-Led02200-sp3	1.524798475	3.15664E-06
gene-Led02223-sp3	-0.469282635	0.004586789
gene-Led02238-sp3	-0.919668467	7.21461E-06
gene-Led02241-sp3	1.599102495	1.79816E-05
gene-Led02251-sp3	2.090772018	1.49269E-05
gene-Led02252-sp3	1.112252542	0.002689528
gene-Led02273-sp3	1.420644464	3.65732E-12
gene-Led02291-sp3	1.781949574	0.000387949
gene-Led02325-sp3	0.82736047	2.3485E-05
gene-Led02354-sp3	-0.914448025	7.6949E-06
gene-Led02368-sp3	0.894266244	0.000141548
gene-Led02376-sp3	-0.817668789	0.007984495
gene-Led02377-sp3	-1.402157175	7.56242E-05
gene-Led02381-sp3	0.66105974	0.008425202
gene-Led02397-sp3	0.967329532	0.001169744
gene-Led02399-sp3	0.953133945	0.001485845
gene-Led02415-sp3	-0.522004111	0.009454702
gene-Led02417-sp3	0.702032739	2.2974E-05
gene-Led02440-sp3	-1.994144095	1.83516E-07
gene-Led02453-sp3	0.884010965	0.005582535
gene-Led02458-sp3	-0.811904174	0.006804898
gene-Led02459-sp3	-0.735152472	0.003467173
gene-Led02461-sp3	1.050955636	0.003754669
gene-Led02494-sp3	4.175194663	1.08153E-09
gene-Led02500-sp3	4.237267902	1.09335E-06
gene-Led02501-sp3	1.205946374	1.91092E-09
gene-Led02516-sp3	-1.166565536	0.001704395

gene-Led02558-sp3	-0.923126637	0.002417277
gene-Led02609-sp3	-0.465729684	0.00906399
gene-Led02620-sp3	1.591019107	0.001776882
gene-Led02639-sp3	-0.6777906	7.74449E-05
gene-Led02666-sp3	0.619570322	0.001349945
gene-Led02679-sp3	1.090634709	0.00611846
gene-Led02690-sp3	-0.710287702	0.006413959
gene-Led02699-sp3	1.531122571	0.005375417
gene-Led02726-sp3	1.15907342	8.15542E-06
gene-Led02736-sp3	3.021300088	9.50476E-29
gene-Led02745-sp3	1.208090889	0.000885465
gene-Led02746-sp3	0.866186488	3.65449E-05
gene-Led02747-sp3	0.731792607	0.009176666
gene-Led02755-sp3	-1.299859247	8.52363E-10
gene-Led02757-sp3	2.19363868	4.12426E-11
gene-Led02758-sp3	0.628649593	0.001928109
gene-Led02776-sp3	0.908142288	3.61478E-06
gene-Led02777-sp3	-0.73376305	5.45666E-06
gene-Led02804-sp3	-0.530194268	0.000355711
gene-Led02852-sp3	-0.563789851	0.000567735
gene-Led02859-sp3	-0.812310695	4.78948E-07
gene-Led02886-sp3	-0.514288457	0.009274644
gene-Led02900-sp3	0.66293503	0.000358052
gene-Led02903-sp3	0.582008791	0.004908491
gene-Led02910-sp3	-1.717741391	3.45811E-10
gene-Led02964-sp3	-1.28375191	0.002510229
gene-Led03018-sp3	1.25687249	2.60873E-10
gene-Led03045-sp3	1.391380775	0.00179193
gene-Led03054-sp3	-0.792729551	5.78348E-07
gene-Led03066-sp3	0.706022391	3.21781E-05
gene-Led03067-sp3	-0.646458638	0.005079285
gene-Led03075-sp3	0.611307125	0.004217108
gene-Led03155-sp3	-0.691920633	0.00978313
gene-Led03165-sp3	0.592364542	0.007454435
gene-Led03168-sp3	1.299775966	1.40292E-08
gene-Led03171-sp3	1.002912232	0.000885286
gene-Led03172-sp3	-2.167534313	8.97276E-05
gene-Led03176-sp3	-0.704137486	0.001561511
gene-Led03200-sp3	1.795190258	4.19832E-07
gene-Led03201-sp3	2.821452631	1.46998E-08
gene-Led03203-sp3	-1.141980323	1.5725E-07
gene-Led03207-sp3	-0.978196547	1.40324E-06
gene-Led03223-sp3	-0.628497475	0.007192412
gene-Led03224-sp3	1.221958954	2.84628E-05

gene-Led03229-sp3	1.211328004	0.001700279
gene-Led03234-sp3	0.544361247	0.006653595
gene-Led03235-sp3	1.180884443	0.002918272
gene-Led03250-sp3	2.145315055	2.71806E-10
gene-Led03266-sp3	-0.721675263	0.001337908
gene-Led03270-sp3	1.104980404	0.001463176
gene-Led03273-sp3	1.971038422	0.000841579
gene-Led03287-sp3	2.782986473	4.89823E-22
gene-Led03290-sp3	-0.559442648	0.000100407
gene-Led03291-sp3	0.586237523	0.003565417
gene-Led03298-sp3	1.010103727	6.27998E-05
gene-Led03302-sp3	0.922888577	1.05811E-05
gene-Led03303-sp3	1.596020043	3.07704E-08
gene-Led03323-sp3	0.731032294	0.000195576
gene-Led03332-sp3	-0.837001621	0.001552338
gene-Led03426-sp3	1.291341255	2.42958E-07
gene-Led03433-sp3	0.753668288	2.13815E-05
gene-Led03434-sp3	3.868504161	2.46465E-27
gene-Led03441-sp3	1.196240801	1.83627E-05
gene-Led03446-sp3	-0.670119967	4.8124E-05
gene-Led03469-sp3	1.26096065	0.000877593
gene-Led03474-sp3	0.639118613	0.006026058
gene-Led03483-sp3	-0.7003502	0.005850075
gene-Led03484-sp3	2.123732995	4.61766E-08
gene-Led03486-sp3	1.424445964	2.20964E-06
gene-Led03487-sp3	1.96742038	0.000172264
gene-Led03490-sp3	-0.941441362	4.18753E-06
gene-Led03534-sp3	-1.061724815	0.004219259
gene-Led03547-sp3	1.594562748	0.000714473
gene-Led03557-sp3	-1.41883355	1.23073E-05
gene-Led03564-sp3	0.858035633	0.001346317
gene-Led03570-sp3	-1.586807249	8.56116E-08
gene-Led03576-sp3	2.479066814	2.52675E-19
gene-Led03580-sp3	-0.439255786	0.009448821
gene-Led03623-sp3	1.728762434	2.36328E-08
gene-Led03628-sp3	1.025859297	6.25008E-05
gene-Led03634-sp3	-0.39378679	0.006946101
gene-Led03665-sp3	1.392562463	0.000239657
gene-Led03668-sp3	1.591694469	0.000495327
gene-Led03676-sp3	2.346930645	0.002881162
gene-Led03682-sp3	-1.479943616	8.90829E-08
gene-Led03702-sp3	2.01521207	3.19616E-28
gene-Led03708-sp3	1.561254213	0.001627154
gene-Led03712-sp3	1.014045204	2.29436E-06

gene-Led03736-sp3	2.476119415	1.57482E-12
gene-Led03743-sp3	-1.064585217	0.000194462
gene-Led03748-sp3	2.773985078	1.96697E-05
gene-Led03760-sp3	-1.794758635	0.002458813
gene-Led03786-sp3	-1.31155262	0.000633193
gene-Led03789-sp3	-1.519045667	0.000823152
gene-Led03810-sp3	-1.085350388	0.001483443
gene-Led03838-sp3	2.857665281	0.001065659
gene-Led03839-sp3	2.081781982	2.942E-06
gene-Led03840-sp3	1.13415171	0.001168243
gene-Led03841-sp3	-0.990961237	1.99178E-05
gene-Led03850-sp3	-0.592835119	0.000987123
gene-Led03859-sp3	0.575533401	0.008731128
gene-Led03886-sp3	1.636107868	1.71161E-13
gene-Led03887-sp3	2.293763623	4.4965E-34
gene-Led03888-sp3	1.908210761	1.75233E-20
gene-Led03896-sp3	3.074104187	6.90711E-25
gene-Led03898-sp3	0.503135354	0.002700546
gene-Led03899-sp3	0.589030515	0.007038794
gene-Led03907-sp3	3.143083968	6.42467E-17
gene-Led03908-sp3	3.593250168	8.19892E-06
gene-Led03922-sp3	1.738477084	2.77953E-05
gene-Led03932-sp3	-1.937257998	3.44707E-10
gene-Led03934-sp3	0.772282989	3.76646E-05
gene-Led03965-sp3	3.294730111	1.4781E-06
gene-Led03978-sp3	-0.620688853	0.000470533
gene-Led03985-sp3	-0.795154106	3.58692E-08
gene-Led04043-sp3	1.208218915	0.00980994
gene-Led04044-sp3	1.022377979	0.001732453
gene-Led04058-sp3	1.192388399	1.07498E-05
gene-Led04109-sp3	-0.615123059	0.00261478
gene-Led04110-sp3	1.606007403	0.004621768
gene-Led04114-sp3	1.068247913	0.002095556
gene-Led04117-sp3	1.780051034	0.000956165
gene-Led04121-sp3	-1.161088103	2.44827E-08
gene-Led04128-sp3	1.676244747	6.20489E-10
gene-Led04131-sp3	-1.299963768	0.001879511
gene-Led04147-sp3	1.786975878	8.01648E-07
gene-Led04157-sp3	2.609414814	1.63261E-10
gene-Led04171-sp3	-0.69412909	0.006156171
gene-Led04193-sp3	0.795109113	0.002063982
gene-Led04203-sp3	0.84569092	2.02613E-05
gene-Led04228-sp3	1.503555689	3.19396E-06
gene-Led04261-sp3	-1.059953932	0.000417437

gene-Led04270-sp3	1.58153208	0.000688079
gene-Led04270-sp3	1.452916343	0.002376406
gene-Led04279-sp3	-1.67197371	3.25779E-09
gene-Led04282-sp3	2.202068833	6.24407E-09
gene-Led04290-sp3	1.675330939	0.002607013
gene-Led04295-sp3	0.580297482	0.009542693
gene-Led04303-sp3	-1.430079032	3.55528E-17
gene-Led04313-sp3	-0.588995897	0.001868755
gene-Led04336-sp3	-2.114661161	2.92287E-05
gene-Led04345-sp3	-2.004682162	0.00074514
gene-Led04358-sp3	-0.911072451	0.00204359
gene-Led04372-sp3	-0.546138369	0.000478732
gene-Led04391-sp3	1.124616251	9.86048E-07
gene-Led04402-sp3	0.756513154	3.72168E-05
gene-Led04417-sp3	0.53390111	0.007496995
gene-Led04429-sp3	-0.747820891	8.34433E-05
gene-Led04463-sp3	0.682737791	0.003264788
gene-Led04471-sp3	-0.586088672	0.000619325
gene-Led04492-sp3	-0.645658064	0.000672636
gene-Led04494-sp3	0.678958117	0.009006729
gene-Led04499-sp3	3.669429485	8.71098E-56
gene-Led04512-sp3	1.341415046	0.000211035
gene-Led04519-sp3	-1.090643139	0.00022038
gene-Led04540-sp3	-0.521976999	0.007008425
gene-Led04554-sp3	-0.466252087	0.0088078
gene-Led04558-sp3	1.239788429	7.07356E-06
gene-Led04562-sp3	-1.362418901	2.96913E-06
gene-Led04568-sp3	-1.682761302	2.43052E-08
gene-Led04604-sp3	2.124390033	1.35718E-05
gene-Led04617-sp3	-1.262065544	0.001148926
gene-Led04641-sp3	1.379290444	0.001514288
gene-Led04642-sp3	-1.195684845	4.75971E-06
gene-Led04658-sp3	-0.620564581	0.009244895
gene-Led04663-sp3	1.902707443	2.50381E-10
gene-Led04681-sp3	1.324313555	0.001385679
gene-Led04683-sp3	-4.325295599	9.79153E-11
gene-Led04692-sp3	0.72471198	0.009065365
gene-Led04763-sp3	1.863808007	3.72508E-12
gene-Led04771-sp3	1.459337646	1.9738E-06
gene-Led04796-sp3	-0.916478465	0.007867079
gene-Led04806-sp3	-1.312706479	0.001208405
gene-Led04816-sp3	-1.27903459	2.28526E-05
gene-Led04817-sp3	-0.753792601	1.73536E-05
gene-Led04817-sp3	-0.824831063	9.74753E-05

gene-Led04838-sp3	1.372229883	0.00424542
gene-Led04942-sp3	-1.213417618	1.28077E-07
gene-Led04945-sp3	-1.745918356	1.66877E-25
gene-Led04946-sp3	-1.306851322	9.86821E-05
gene-Led04949-sp3	-0.410683016	0.007870615
gene-Led04950-sp3	-0.626772705	0.000316837
gene-Led04955-sp3	1.079399458	2.74017E-07
gene-Led04958-sp3	3.031789407	2.32853E-40
gene-Led04959-sp3	1.296993886	0.001327923
gene-Led04960-sp3	1.628050899	1.25746E-07
gene-Led04968-sp3	2.373360675	0.001613967
gene-Led04985-sp3	1.148743566	0.002090802
gene-Led04987-sp3	-0.64046532	0.004924704
gene-Led05009-sp3	0.724194857	0.004213292
gene-Led05017-sp3	2.950336962	6.463E-13
gene-Led05022-sp3	-2.943187723	3.75977E-10
gene-Led05031-sp3	-2.855136426	5.07846E-30
gene-Led05034-sp3	-1.803055188	2.05626E-20
gene-Led05039-sp3	-1.430200759	0.000151647
gene-Led05048-sp3	0.75611068	0.005727769
gene-Led05049-sp3	0.93435746	0.000498929
gene-Led05056-sp3	0.715191655	0.005711481
gene-Led05062-sp3	-2.885390397	2.87437E-15
gene-Led05063-sp3	-3.525810556	1.33611E-21
gene-Led05068-sp3	4.499562308	1.09418E-25
gene-Led05087-sp3	2.142987266	2.91176E-05
gene-Led05094-sp3	0.932724376	0.001218345
gene-Led05095-sp3	-0.86013312	0.00030357
gene-Led05099-sp3	0.577712022	0.005196166
gene-Led05105-sp3	-1.378450294	4.70067E-05
gene-Led05123-sp3	3.250692696	6.60102E-13
gene-Led05126-sp3	-1.546314488	0.000395297
gene-Led05130-sp3	-1.827859596	8.6726E-13
gene-Led05132-sp3	-0.762421694	0.004680298
gene-Led05133-sp3	-5.161890613	6.70132E-20
gene-Led05139-sp3	1.415275042	0.000860249
gene-Led05144-sp3	0.749552065	4.5904E-06
gene-Led05145-sp3	0.862812905	0.000244913
gene-Led05164-sp3	0.899648528	0.007463948
gene-Led05169-sp3	1.745175311	4.12216E-05
gene-Led05176-sp3	1.556162454	0.000397417
gene-Led05203-sp3	-0.92065833	2.91251E-07
gene-Led05207-sp3	-2.516985683	2.35294E-08
gene-Led05219-sp3	1.04949866	5.31731E-05

gene-Led05230-sp3	-0.52567749	0.001827475
gene-Led05235-sp3	0.713607463	0.005309818
gene-Led05285-sp3	1.557139955	0.000147761
gene-Led05296-sp3	-0.563205093	0.002107108
gene-Led05329-sp3	-0.509691064	0.005865355
gene-Led05332-sp3	1.742726427	9.07258E-11
gene-Led05340-sp3	1.079224433	2.19643E-08
gene-Led05353-sp3	-0.578421093	0.005292729
gene-Led05408-sp3	-0.42216822	0.009987205
gene-Led05458-sp3	0.70313638	0.00013554
gene-Led05491-sp3	-0.482883965	0.008710342
gene-Led05492-sp3	1.561007258	0.000613994
gene-Led05570-sp3	4.238525651	2.97191E-15
gene-Led05578-sp3	0.935725982	0.003366719
gene-Led05591-sp3	0.623306665	0.002205107
gene-Led05597-sp3	-0.465682301	0.007805265
gene-Led05631-sp3	1.051439402	0.001952282
gene-Led05658-sp3	-1.384132235	9.81366E-09
gene-Led05693-sp3	-1.49720992	3.01713E-09
gene-Led05698-sp3	-1.553429269	0.000565712
gene-Led05717-sp3	1.065587929	0.006813444
gene-Led05722-sp3	0.640705029	0.000858815
gene-Led05728-sp3	1.624213336	6.75134E-12
gene-Led05740-sp3	-0.98603305	7.94012E-05
gene-Led05743-sp3	1.347148181	3.83841E-05
gene-Led05768-sp3	-0.709583148	4.05281E-05
gene-Led05770-sp3	-0.865263325	0.001923155
gene-Led05777-sp3	-0.671265301	0.005586015
gene-Led05808-sp3	-1.420053386	1.61579E-11
gene-Led05862-sp3	-0.860284613	4.14778E-05
gene-Led05864-sp3	0.549836902	0.000117229
gene-Led05881-sp3	0.688363627	0.002581994
gene-Led05883-sp3	-0.676895387	0.001325675
gene-Led05902-sp3	1.549923517	1.00535E-05
gene-Led05919-sp3	0.679337075	0.006687292
gene-Led05934-sp3	1.60709047	1.55752E-07
gene-Led05959-sp3	0.884335344	0.000314868
gene-Led05983-sp3	2.324911101	0.003188244
gene-Led05984-sp3	2.160019276	0.004428618
gene-Led05986-sp3	1.829800841	4.13535E-10
gene-Led06007-sp3	1.08814987	0.001086051
gene-Led06015-sp3	1.884871003	0.002481055
gene-Led06017-sp3	1.363726545	9.94578E-06
gene-Led06031-sp3	-0.83837205	0.00010268

gene-Led06051-sp3	0.676593315	0.003522003
gene-Led06055-sp3	1.4954956	4.04442E-06
gene-Led06056-sp3	-0.527422035	0.001413773
gene-Led06059-sp3	-2.09576403	6.69241E-19
gene-Led06060-sp3	-0.873297476	1.41765E-06
gene-Led06075-sp3	2.130236797	3.94833E-06
gene-Led06118-sp3	0.958741336	0.000586837
gene-Led06124-sp3	-1.126209467	7.1833E-08
gene-Led06138-sp3	-0.779580482	4.52911E-06
gene-Led06162-sp3	-3.884078346	1.68594E-09
gene-Led06164-sp3	-1.390272543	1.43213E-06
gene-Led06165-sp3	1.301296983	1.23629E-10
gene-Led06217-sp3	2.343191615	0.000391944
gene-Led06227-sp3	1.296577132	0.000517786
gene-Led06250-sp3	0.730966641	0.004563433
gene-Led06253-sp3	1.119225455	4.36127E-05
gene-Led06255-sp3	1.939896605	3.1833E-05
gene-Led06265-sp3	-1.93050662	1.86641E-10
gene-Led06278-sp3	-0.590263378	0.004462997
gene-Led06279-sp3	-1.368164676	1.24685E-06
gene-Led06328-sp3	-0.578333821	0.004365174
gene-Led06338-sp3	2.458558883	3.5085E-33
gene-Led06347-sp3	2.50175445	5.35954E-25
gene-Led06349-sp3	0.860690794	0.007684596
gene-Led06367-sp3	-3.427848514	4.24632E-08
gene-Led06391-sp3	-5.4110145	9.50668E-60
gene-Led06391-sp3	-2.773971812	0.003202027
gene-Led06410-sp3	-0.518074913	0.009364206
gene-Led06460-sp3	-0.699072833	0.000619923
gene-Led06464-sp3	0.826968641	0.001228376
gene-Led06483-sp3	-1.300604475	3.59864E-11
gene-Led06499-sp3	1.387230031	0.000763977
gene-Led06514-sp3	-0.859634784	0.003347881
gene-Led06524-sp3	2.093934954	1.92355E-20
gene-Led06530-sp3	3.184755362	1.28387E-16
gene-Led06540-sp3	-0.504663912	0.007829486
gene-Led06546-sp3	5.66082246	5.92273E-62
gene-Led06565-sp3	-0.793543837	0.001474509
gene-Led06582-sp3	-1.208514783	4.83107E-08
gene-Led06598-sp3	0.934646167	1.54019E-05
gene-Led06601-sp3	-0.973782247	1.07229E-07
gene-Led06603-sp3	-1.408884877	7.52282E-07
gene-Led06604-sp3	-0.710461305	0.000175705
gene-Led06642-sp3	2.255455441	1.46547E-09



gene-Led06668-sp3	1.375959839	0.001492787
gene-Led06732-sp3	2.453963877	4.98775E-05
gene-Led06772-sp3	2.106624742	9.02134E-09
gene-Led06782-sp3	1.646457309	1.4345E-06
gene-Led06801-sp3	1.539537839	0.002217044
gene-Led06808-sp3	0.997709332	9.43791E-06
gene-Led06827-sp3	2.559156392	1.25628E-05
gene-Led06842-sp3	0.657646009	0.001954149
gene-Led06846-sp3	0.57523407	0.007829274
gene-Led06848-sp3	3.418438205	4.45433E-10
gene-Led06850-sp3	4.571199774	7.67491E-14
gene-Led06888-sp3	5.55941702	1.42335E-56
gene-Led06929-sp3	-0.583583234	0.002106102
gene-Led06931-sp3	1.17852883	4.75323E-05
gene-Led06933-sp3	0.736916703	0.005963003
gene-Led06946-sp3	-0.761855275	0.001067992
gene-Led06949-sp3	0.592765063	0.000389139
gene-Led06957-sp3	2.397203379	2.06242E-27
gene-Led06993-sp3	0.928112371	0.007808909
gene-Led06998-sp3	-1.013877176	0.000120086
gene-Led07002-sp3	-1.009840129	1.05788E-05
gene-Led07019-sp3	1.295783771	1.9422E-11
gene-Led07029-sp3	1.326594347	0.005021919
gene-Led07041-sp3	-1.322230313	3.24176E-06
gene-Led07043-sp3	2.581264153	1.36438E-07
gene-Led07089-sp3	0.611796009	0.003205154
gene-Led07092-sp3	2.083222583	3.14066E-07
gene-Led07102-sp3	-1.433297668	1.0352E-06
gene-Led07104-sp3	-0.624837613	0.001414951
gene-Led07136-sp3	-1.244025508	0.0003523
gene-Led07148-sp3	0.943045706	0.001920019
gene-Led07155-sp3	-0.751270639	0.003927893
gene-Led07180-sp3	2.447381288	6.16018E-11
gene-Led07186-sp3	-1.568180189	6.11193E-16
gene-Led07202-sp3	-0.728077798	0.000538942
gene-Led07204-sp3	2.653221631	7.56216E-14
gene-Led07205-sp3	0.9276758	0.002488934
gene-Led07224-sp3	0.934445964	6.88787E-05
gene-Led07227-sp3	1.260528969	7.31379E-08
gene-Led07275-sp3	1.104004957	3.26055E-11
gene-Led07300-sp3	1.245174901	2.5515E-09
gene-Led07305-sp3	-0.641378839	0.003575682
gene-Led07321-sp3	-0.444554893	0.00363381
gene-Led07345-sp3	3.494695777	6.91622E-28

gene-Led07360-sp3	2.865840681	2.85841E-06
gene-Led07388-sp3	0.580971583	0.008448087
gene-Led07397-sp3	0.898921753	0.000227921
gene-Led07404-sp3	-2.214432501	1.80613E-07
gene-Led07486-sp3	-0.463072484	0.003832229
gene-Led07492-sp3	-0.54062742	0.006356027
gene-Led07495-sp3	-0.46867398	0.004371104
gene-Led07503-sp3	-0.744529889	0.000350212
gene-Led07517-sp3	-1.25158811	5.40567E-10
gene-Led07525-sp3	-1.482492758	8.87906E-15
gene-Led07526-sp3	1.634423892	6.27418E-05
gene-Led07526-sp3	1.199734664	0.003063471
gene-Led07592-sp3	3.492240754	6.31336E-37
gene-Led07595-sp3	-3.976576827	2.08726E-61
gene-Led07601-sp3	-0.684180934	0.000869983
gene-Led07604-sp3	-0.736665346	3.12483E-05
gene-Led07615-sp3	1.289349096	0.002113651
gene-Led07626-sp3	1.867452853	3.80867E-15
gene-Led07629-sp3	0.821580654	0.000269422
gene-Led07637-sp3	0.562987597	0.001963062
gene-Led07646-sp3	-0.579320972	0.001172493
gene-Led07647-sp3	-0.542997806	0.007718723
gene-Led07684-sp3	-0.603745369	0.000221933
gene-Led07685-sp3	-1.415418143	1.87318E-07
gene-Led07697-sp3	3.574130319	4.65955E-11
gene-Led07738-sp3	0.94917231	1.13221E-06
gene-Led07742-sp3	1.392097242	0.000626575
gene-Led07744-sp3	-1.648513841	0.000626582
gene-Led07758-sp3	2.408498708	2.92744E-05
gene-Led07788-sp3	0.940453751	4.06604E-06
gene-Led07803-sp3	1.571115275	1.38415E-06
gene-Led07810-sp3	-0.696494917	0.000350841
gene-Led07827-sp3	-0.604135779	0.000874352
gene-Led07845-sp3	1.67118207	2.09083E-11
gene-Led07853-sp3	-0.829611585	0.00019853
gene-Led07856-sp3	1.063294108	0.001108253
gene-Led07898-sp3	0.949576726	0.001776664
gene-Led07904-sp3	-0.671183851	4.82092E-05
gene-Led07908-sp3	1.153615538	5.39705E-05
gene-Led07914-sp3	0.949082367	0.000356815
gene-Led07916-sp3	0.647022063	0.000363623
gene-Led07917-sp3	1.028329944	0.000589696
gene-Led07963-sp3	0.66983508	0.003090019
gene-Led07979-sp3	0.740084121	6.24269E-05

gene-Led07993-sp3	-0.81513435	0.001373578
gene-Led08008-sp3	-0.815860173	0.001290939
gene-Led08017-sp3	-0.560668092	0.001386518
gene-Led08052-sp3	-0.630892241	0.001783831
gene-Led08072-sp3	-1.364711254	0.000230251
gene-Led08110-sp3	0.571369804	0.00373508
gene-Led08161-sp3	0.656227408	0.009552113
gene-Led08165-sp3	2.273819436	0.000175793
gene-Led08168-sp3	2.387671234	5.37336E-08
gene-Led08177-sp3	1.107825746	0.006997222
gene-Led08181-sp3	1.629841801	7.1264E-05
gene-Led08184-sp3	2.395592702	2.94889E-24
gene-Led08187-sp3	4.355372641	3.27426E-31
gene-Led08195-sp3	1.987203996	0.00164171
gene-Led08200-sp3	1.043990001	7.4918E-05
gene-Led08203-sp3	-0.60015764	0.000401364
gene-Led08204-sp3	-0.659077086	0.000241298
gene-Led08217-sp3	-2.35823162	3.03791E-16
gene-Led08218-sp3	-0.76077714	0.003528576
gene-Led08238-sp3	1.722859482	5.71868E-07
gene-Led08252-sp3	1.51804875	0.000513803
gene-Led08334-sp3	-0.663091673	0.00111811
gene-Led08399-sp3	0.837345168	0.00075504
gene-Led08418-sp3	-0.542786648	0.008958717
gene-Led08422-sp3	-0.614136226	0.008388944
gene-Led08432-sp3	0.988402125	4.12001E-06
gene-Led08448-sp3	2.277302402	6.3521E-18
gene-Led08460-sp3	-1.456412932	0.001156605
gene-Led08464-sp3	-1.02250629	0.004579178
gene-Led08489-sp3	0.748899921	0.001224066
gene-Led08516-sp3	1.307867889	2.17204E-10
gene-Led08562-sp3	0.91969013	0.003917089
gene-Led08569-sp3	-0.999901333	0.000323684
gene-Led08597-sp3	-0.652265333	0.001842152
gene-Led08608-sp3	-1.907695911	0.002327857
gene-Led08610-sp3	1.537783485	5.39353E-07
gene-Led08615-sp3	-0.394485829	0.009240239
gene-Led08622-sp3	-3.517094449	3.84141E-33
gene-Led08624-sp3	-5.441844495	1.63254E-15
gene-Led08625-sp3	-2.243311588	7.22257E-11
gene-Led08636-sp3	-0.77764238	0.002929496
gene-Led08645-sp3	-0.902029523	0.003971875
gene-Led08653-sp3	0.841758506	0.003336651
gene-Led08657-sp3	1.93309745	0.00197773

gene-Led08658-sp3	2.004482493	3.63316E-07
gene-Led08658-sp3	1.79901145	0.002436622
gene-Led08659-sp3	1.842540327	6.54508E-09
gene-Led08681-sp3	0.847977764	0.004690931
gene-Led08682-sp3	1.584239288	7.09324E-07
gene-Led08706-sp3	-1.954924933	1.57543E-09
gene-Led08715-sp3	-0.741404442	0.00112037
gene-Led08727-sp3	-0.655377662	0.006946148
gene-Led08734-sp3	-2.222116552	2.49932E-07
gene-Led08744-sp3	0.980299802	0.003688888
gene-Led08745-sp3	-0.806103216	2.12231E-07
gene-Led08750-sp3	1.092020908	0.000863707
gene-Led08827-sp3	-1.909657621	5.66755E-27
gene-Led08829-sp3	-1.435193876	1.81194E-09
gene-Led08836-sp3	0.963867524	0.003697555
gene-Led08838-sp3	-0.897940544	1.84466E-06
gene-Led08870-sp3	1.298817583	0.000437429
gene-Led08877-sp3	-1.150754606	5.27872E-10
gene-Led08906-sp3	0.586909868	0.005379224
gene-Led08908-sp3	-0.557736734	0.005776293
gene-Led08922-sp3	-0.484030154	0.004397215
gene-Led08924-sp3	1.828350727	2.14558E-08
gene-Led08999-sp3	-0.959540297	2.26542E-06
gene-Led09023-sp3	-0.624022807	7.78098E-05
gene-Led09059-sp3	-0.71701139	0.000779547
gene-Led09060-sp3	-0.908334963	0.006216908
gene-Led09068-sp3	0.780754375	0.001643894
gene-Led09072-sp3	-0.619449052	0.000229501
gene-Led09101-sp3	-0.624145587	0.004550684
gene-Led09126-sp3	-0.872794747	4.14386E-06
gene-Led09169-sp3	-0.609594908	0.000123961
gene-Led09171-sp3	-0.534131779	0.004050505
gene-Led09172-sp3	-0.537249551	0.006870105
gene-Led09175-sp3	1.325594459	2.84685E-08
gene-Led09177-sp3	2.759227483	4.88207E-06
gene-Led09201-sp3	1.13676146	4.05981E-06
gene-Led09210-sp3	1.689427245	0.000340224
gene-Led09233-sp3	-0.66052839	0.001722301
gene-Led09234-sp3	0.815674858	0.002691242
gene-Led09259-sp3	0.788416769	0.006950857
gene-Led09278-sp3	-0.505388658	0.008457768
gene-Led09320-sp3	1.762172357	0.008722943
gene-Led09321-sp3	1.602068268	5.49021E-10
gene-Led09374-sp3	1.912566199	0.002233024

gene-Led09378-sp3	2.705715513	3.02535E-05
gene-Led09380-sp3	-0.660830806	0.004511189
gene-Led09386-sp3	-1.435024723	0.004713274
gene-Led09418-sp3	2.564373366	4.73145E-31
gene-Led09424-sp3	2.135009213	3.00002E-16
gene-Led09439-sp3	-0.64264001	6.21279E-05
gene-Led09442-sp3	0.583080291	0.003214366
gene-Led09450-sp3	-1.721171741	6.71106E-14
gene-Led09488-sp3	0.779322027	0.002429388
gene-Led09499-sp3	0.715622885	0.004777377
gene-Led09503-sp3	1.084292279	0.001173354
gene-Led09504-sp3	-0.99561821	9.42931E-05
gene-Led09505-sp3	-0.664039211	0.003815058
gene-Led09517-sp3	-0.982741972	3.75971E-09
gene-Led09543-sp3	0.820675393	0.004709888
gene-Led09557-sp3	-1.500963314	5.16571E-06
gene-Led09573-sp3	0.621796917	0.001054973
gene-Led09598-sp3	-0.638477315	0.00378525
gene-Led09619-sp3	2.055105239	9.38115E-05
gene-Led09623-sp3	1.222544359	0.007307617
gene-Led09663-sp3	1.200500582	0.000335815
gene-Led09680-sp3	0.599892479	0.00939505
gene-Led09696-sp3	-1.235668275	5.76318E-13
gene-Led09702-sp3	1.238210754	1.07887E-06
gene-Led09711-sp3	1.14306781	0.000483519
gene-Led09712-sp3	1.850671448	7.28832E-06
gene-Led09714-sp3	1.127610451	0.000408751
gene-Led09731-sp3	-0.54442307	0.001694028
gene-Led09769-sp3	1.075679992	0.006560984
gene-Led09806-sp3	2.979651199	0.000628379
gene-Led09808-sp3	1.103997393	0.000315938
gene-Led09812-sp3	-0.90768372	0.003677944
gene-Led09836-sp3	1.054827268	0.000856224
gene-Led09839-sp3	-0.55568313	0.000475408
gene-Led09846-sp3	-0.818633782	1.59123E-06
gene-Led09895-sp3	-0.740997964	0.001823826
gene-Led09984-sp3	-0.740239427	0.000164141
gene-Led09989-sp3	0.693245089	0.00595943
gene-Led10005-sp3	1.473238559	0.001860907
gene-Led10006-sp3	2.161013982	1.82842E-08
gene-Led10034-sp3	-0.522401045	0.00662565
gene-Led10040-sp3	-0.502365407	0.002698797
gene-Led10050-sp3	1.209165375	5.65767E-07
gene-Led10065-sp3	0.678251257	0.005121503

gene-Led10108-sp3	3.700598959	2.39187E-06
gene-Led10111-sp3	0.632235653	0.004696889
gene-Led10121-sp3	0.881716539	0.00195228
gene-Led10163-sp3	1.542706748	4.6195E-05
gene-Led10176-sp3	0.779414847	0.00016738
gene-Led10184-sp3	2.005597819	5.1888E-10
gene-Led10210-sp3	1.449863263	5.94211E-07
gene-Led10217-sp3	-0.749697743	0.007465637
gene-Led10225-sp3	1.107036715	1.17967E-06
gene-Led10239-sp3	-0.944258187	2.78613E-06
gene-Led10246-sp3	1.384430806	2.12736E-15
gene-Led10262-sp3	-0.382715066	0.003562503
gene-Led10312-sp3	2.115878201	6.06552E-08
gene-Led10316-sp3	2.335195994	1.12441E-15
gene-Led10321-sp3	-1.92395671	8.99548E-06
gene-Led10322-sp3	2.636242024	7.40555E-06
gene-Led10323-sp3	-1.4152756	0.000107172
gene-Led10329-sp3	0.923116721	0.001414392
gene-Led10340-sp3	1.313542633	0.000136438
gene-Led10354-sp3	1.210000665	0.000168309
gene-Led10375-sp3	-0.621572609	0.000695739
gene-Led10477-sp3	1.881649481	5.01388E-06
gene-Led10479-sp3	4.021739235	2.764E-18
gene-Led10483-sp3	-2.327037328	1.19454E-08
gene-Led10484-sp3	-1.803784969	1.93298E-11
gene-Led10490-sp3	-2.074991818	7.37038E-11
gene-Led10526-sp3	-2.212835357	5.56712E-20
gene-Led10530-sp3	1.086927632	4.84463E-05
gene-Led10555-sp3	-1.402395172	6.98771E-08
gene-Led10556-sp3	1.322768979	0.000712498
gene-Led10562-sp3	-0.680695416	3.65609E-05
gene-Led10567-sp3	1.039594917	8.60507E-06
gene-Led10581-sp3	3.607214559	4.52782E-05
gene-Led10588-sp3	0.470858172	0.00527267
gene-Led10615-sp3	-0.625510722	1.82739E-05
gene-Led10621-sp3	2.725566013	4.21239E-06
gene-Led10627-sp3	-1.073811041	1.90336E-06
gene-Led10630-sp3	-0.703981672	0.005128837
gene-Led10639-sp3	0.952031399	0.000893887
gene-Led10693-sp3	2.359199531	1.25675E-08
gene-Led10728-sp3	-0.567368669	0.000680871
gene-Led10733-sp3	0.838594834	9.61579E-05
gene-Led10735-sp3	1.049080609	3.53062E-06
gene-Led10757-sp3	-1.200249428	7.1704E-05

gene-Led10760-sp3	0.531207508	0.003782011
gene-Led10768-sp3	1.53015464	1.71575E-17
gene-Led10771-sp3	-0.610551916	0.008298145
gene-Led10808-sp3	-1.926505962	0.000127137
gene-Led10813-sp3	-0.656686864	0.000352281
gene-Led10875-sp3	0.687240239	0.004686808
gene-Led10877-sp3	-0.699829031	0.000924487
gene-Led10878-sp3	0.98106957	0.00142818
gene-Led10879-sp3	0.793845467	2.52157E-05
gene-Led10891-sp3	-1.031286489	4.85211E-09
gene-Led10892-sp3	-3.095225243	8.30333E-08
gene-Led10897-sp3	1.084567273	6.45506E-06
gene-Led10913-sp3	3.423791331	7.3177E-05
gene-Led10925-sp3	1.492250361	3.2736E-10
gene-Led10927-sp3	0.770805775	0.006427538
gene-Led10930-sp3	-0.554238265	0.002200263
gene-Led10936-sp3	0.853487033	0.000622618
gene-Led10991-sp3	-2.084032588	1.95085E-20
gene-Led10993-sp3	-0.727146548	0.001158677
gene-Led11014-sp3	0.604590476	0.000676491
gene-Led11023-sp3	2.322663126	7.14496E-06
gene-Led11071-sp3	-1.794758635	0.002458813
gene-Led11091-sp3	0.856273322	0.002538886
gene-Led11122-sp3	-2.943187723	3.75977E-10
gene-Led11194-sp3	1.041588956	0.00933979
gene-Led11203-sp3	-1.937257998	3.44707E-10
gene-Led11234-sp3	2.734298119	3.76071E-24
gene-Led11282-sp3	2.782986473	4.89823E-22
gene-Led11319-sp3	0.807690905	0.001792685
gene-Led11452-sp3	1.04088619	0.002618091
gene-Led11455-sp3	-1.338955707	0.000172024

---

**Table S6 Common DEGs between Venn diagram**

gene-Led00095-sp3
gene-Led00127-sp3
gene-Led00180-sp3
gene-Led00287-sp3
gene-Led00345-sp3
gene-Led00553-sp3
gene-Led00680-sp3
gene-Led00683-sp3
gene-Led00910-sp3
gene-Led00929-sp3
gene-Led01098-sp3
gene-Led01338-sp3
gene-Led01347-sp3
gene-Led01536-sp3
gene-Led01538-sp3
gene-Led01568-sp3
gene-Led01764-sp3
gene-Led01765-sp3
gene-Led01978-sp3
gene-Led02063-sp3
gene-Led02397-sp3
gene-Led02690-sp3
gene-Led02755-sp3
gene-Led02776-sp3
gene-Led03250-sp3
gene-Led03434-sp3
gene-Led03576-sp3
gene-Led03682-sp3
gene-Led03887-sp3
gene-Led03896-sp3
gene-Led03898-sp3
gene-Led03907-sp3
gene-Led04121-sp3
gene-Led04279-sp3
gene-Led04345-sp3
gene-Led04429-sp3
gene-Led04499-sp3
gene-Led04617-sp3
gene-Led04683-sp3
gene-Led04763-sp3
gene-Led04796-sp3
gene-Led04806-sp3
gene-Led04949-sp3



gene-Led05017-sp3  
gene-Led05022-sp3  
gene-Led05031-sp3  
gene-Led05063-sp3  
gene-Led05068-sp3  
gene-Led05095-sp3  
gene-Led05130-sp3  
gene-Led05133-sp3  
gene-Led06015-sp3  
gene-Led06338-sp3  
gene-Led06391-sp3  
gene-Led06524-sp3  
gene-Led06546-sp3  
gene-Led06582-sp3  
gene-Led06888-sp3  
gene-Led06957-sp3  
gene-Led07102-sp3  
gene-Led07148-sp3  
gene-Led07155-sp3  
gene-Led07224-sp3  
gene-Led07517-sp3  
gene-Led07525-sp3  
gene-Led07526-sp3  
gene-Led07626-sp3  
gene-Led08187-sp3  
gene-Led08218-sp3  
gene-Led08460-sp3  
gene-Led08636-sp3  
gene-Led08734-sp3  
gene-Led08827-sp3  
gene-Led09023-sp3  
gene-Led09321-sp3  
gene-Led09418-sp3  
gene-Led09424-sp3  
gene-Led09450-sp3  
gene-Led10484-sp3  
gene-Led10555-sp3  
gene-Led10768-sp3  
gene-Led10927-sp3  
gene-Led11122-sp3

---

**Table S7 The top 20 enriched GO terms of DEGs in LeHH24h vs LeHH0h**

<b>ID</b>	<b>Description</b>	<b>Pvalue</b>	<b>Qvalue</b>	<b>Up</b>	<b>Down</b>
GO:0055114	oxidation-reduction process	1.09E-09	6.61E-07	60	34
GO:0005618	cell wall	1.15E-06	7.07E-05	8	0
GO:0009277	fungal-type cell wall	1.15E-06	7.07E-05	8	0
GO:0030312	external encapsulating structure	1.15E-06	7.07E-05	8	0
GO:0000786	nucleosome	5.76E-05	0.0026505	8	0
GO:0032993	protein-DNA complex	0.000164	0.0060359	8	0
GO:0044815	DNA packaging complex	0.0002593	0.0079505	8	0
GO:0005840	ribosome	0.0003698	0.0097197	20	1
GO:0000785	chromatin	0.0005984	0.0137635	9	0
GO:0005743	mitochondrial inner membrane	0.0007475	0.0152832	10	0
GO:0019866	organelle inner membrane	0.0009807	0.0179978	10	0
GO:0005740	mitochondrial envelope	0.001076	0.0179978	13	0
GO:0098800	inner mitochondrial membrane protein complex	0.0011803	0.0180983	8	0
GO:0030529	intracellular ribonucleoprotein complex	0.0013996	0.0198103	23	2
GO:1990904	ribonucleoprotein complex	0.001564	0.0205556	23	2
GO:0071944	cell periphery	0.00168	0.0206075	10	1
GO:0098798	mitochondrial protein complex	0.0024742	0.0284532	9	0
GO:0016491	oxidoreductase activity	6.33E-11	2.08E-08	62	40
GO:0005199	structural constituent of cell wall	7.34E-07	0.0001208	8	0
GO:0005198	structural molecule activity	2.13E-05	0.0023376	28	1

**Table S8 The top 20 enriched KEGG terms of DEGs in LeHH24h vs LeHH0h**

<b>KEGG_A class</b>	<b>Pathway</b>	<b>out (217)</b>	<b>All (2086)</b>	<b>Pvalue</b>	<b>Qvalue</b>	<b>Pathway ID</b>
Genetic Information Processing	Ribosome	24	94	1.48E-05	0.001421	ko03010
Metabolism	Glycolysis / Gluconeogenesis	13	45	0.000412	0.01977	ko00010
Metabolism	Methane metabolism	8	22	0.00106	0.033909	ko00680
Metabolism	Carbon metabolism	20	106	0.005008	0.088727	ko01200
Metabolism	Tyrosine metabolism	7	22	0.005206	0.088727	ko00350
Metabolism	Metabolic pathways	113	912	0.005545	0.088727	ko01100
Metabolism	Glyoxylate and dicarboxylate metabolism	7	24	0.008815	0.114572	ko00630
Metabolism	Oxidative phosphorylation	14	69	0.009548	0.114572	ko00190
Metabolism	Biosynthesis of secondary metabolites	50	358	0.011634	0.124092	ko01110
Metabolism	Glycerolipid metabolism	7	29	0.025352	0.243383	ko00561
Metabolism	Linoleic acid metabolism	2	3	0.030107	0.262752	ko00591
Metabolism	Fatty acid degradation	7	31	0.035724	0.285791	ko00071
Metabolism	Ascorbate and aldarate metabolism	4	15	0.06202	0.457996	ko00053
Metabolism	Fructose and mannose metabolism	5	24	0.095874	0.607639	ko00051
Metabolism	Sulphur metabolism	5	24	0.095874	0.607639	ko00920
Metabolism	Sesquiterpenoid and triterpenoid biosynthesis	1	1	0.104027	0.607639	ko00909
Metabolism	Biosynthesis of unsaturated fatty acids	4	18	0.108918	0.607639	ko01040
Metabolism	Glycosphingolipid biosynthesis - globo and isoglobo series	2	6	0.122046	0.607639	ko00603
Metabolism	Pyruvate metabolism	8	49	0.129558	0.607639	ko00620
Cellular Processes	Mitophagy - yeast	6	34	0.134449	0.607639	ko04139