

Whole Genome Sequence of an Edible Mushroom

Oudemansiella raphanipes (Changgengu)

Liping Zhu^{1,2 †}, Xia Gao^{3, †}, Meihua Zhang¹, Chunhui Hu¹, Wujie Yang³, Lizhong Guo¹,
Song Yang¹, Hailong Yu^{2, *} and Hao Yu^{1, *}

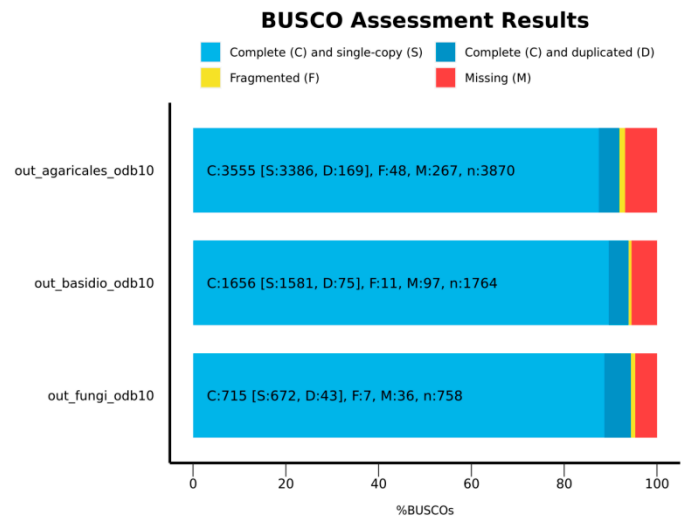


Figure S1. BUSCO summary of *O. raphanipes* CGG-A-s1. The completeness of CGG-A-s1 genome was evaluated using different databases as indicated on the y-axis. The blue area represents the number of complete (C) and single-copy genes (S), the dark blue area represents the number of complete and duplicated genes (D), and the yellow and red indicate the number of fragmented genes (F) and missing genes (M), respectively; and n indicates the number of all genes used.