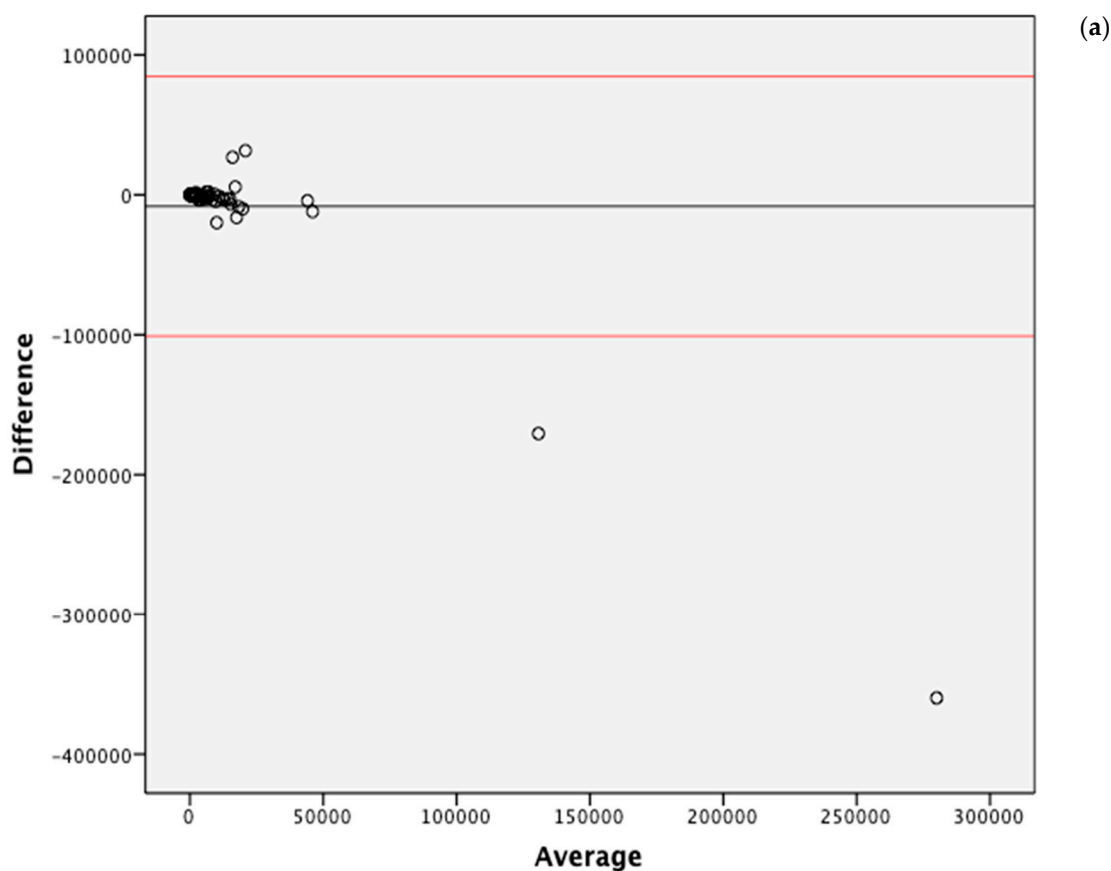
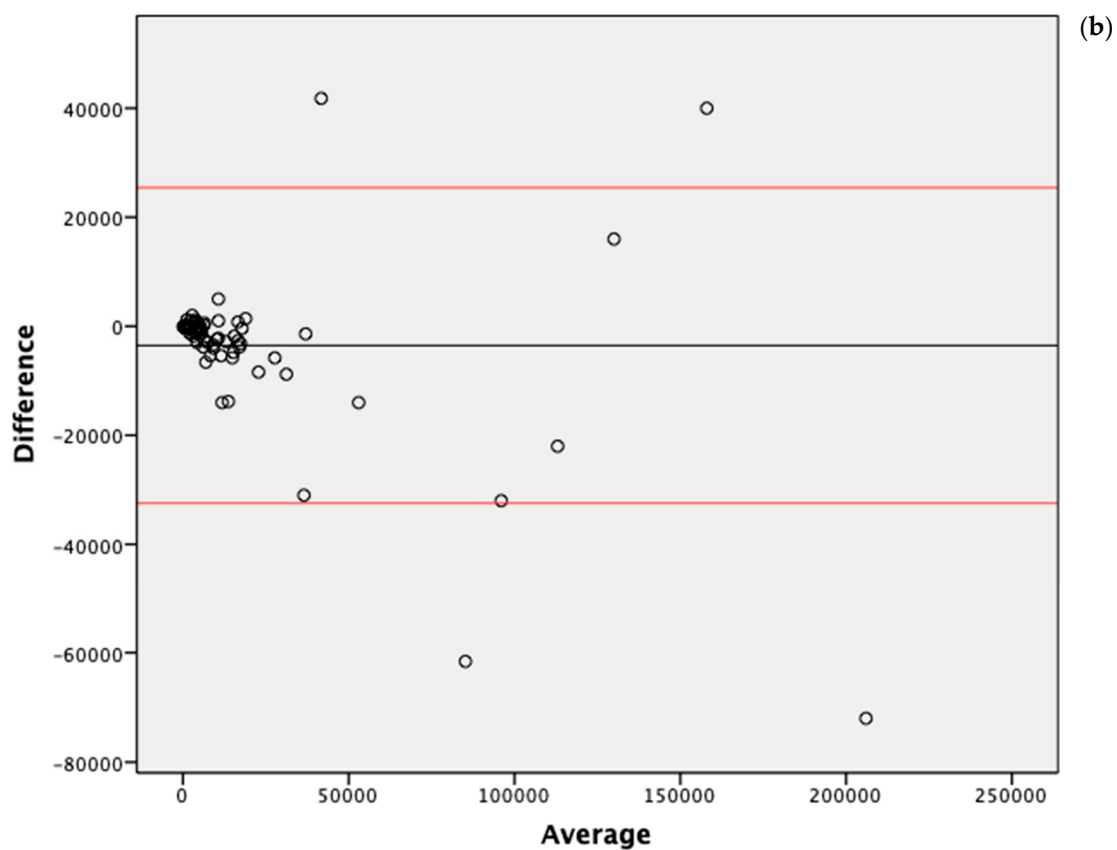
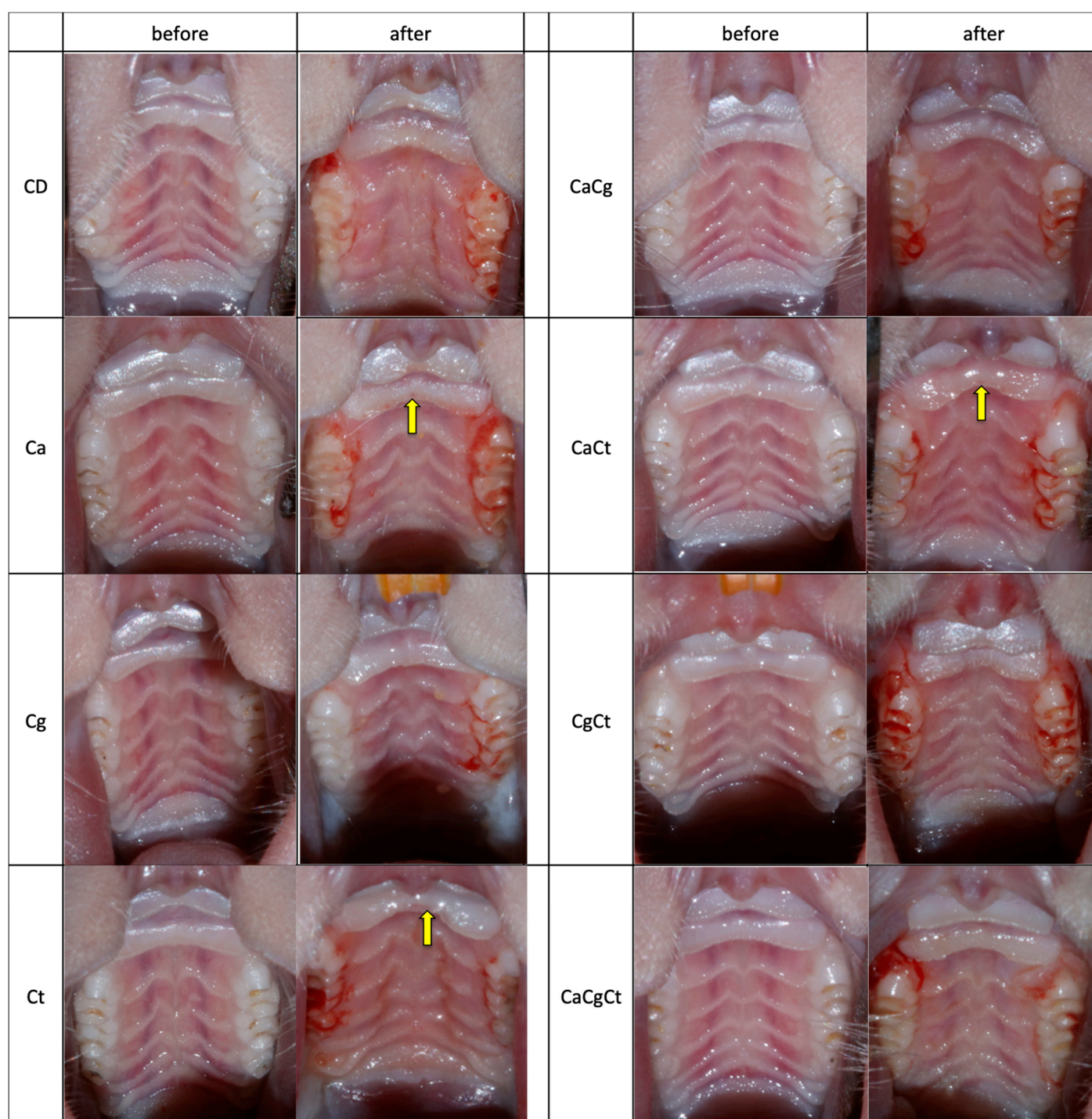


**Figure S1.** Mean of rats' body mass during the whole experimental period (before and after the cementation of the intraoral acrylic device). Day 0: oral impression; day 7: cementation and first inoculation; day 10: second inoculation; day 13: third inoculation; days 21, 28, and 35: 1st, 2nd and 3rd week after inoculations, respectively; and day 42: euthanasia. Significant difference ( $p < 0.001$ ) was found between male and female rats; different letters denote significant difference ( $p \leq 0.006$ ) among the periods (repeated measures ANOVA). Error bars: standard deviation.



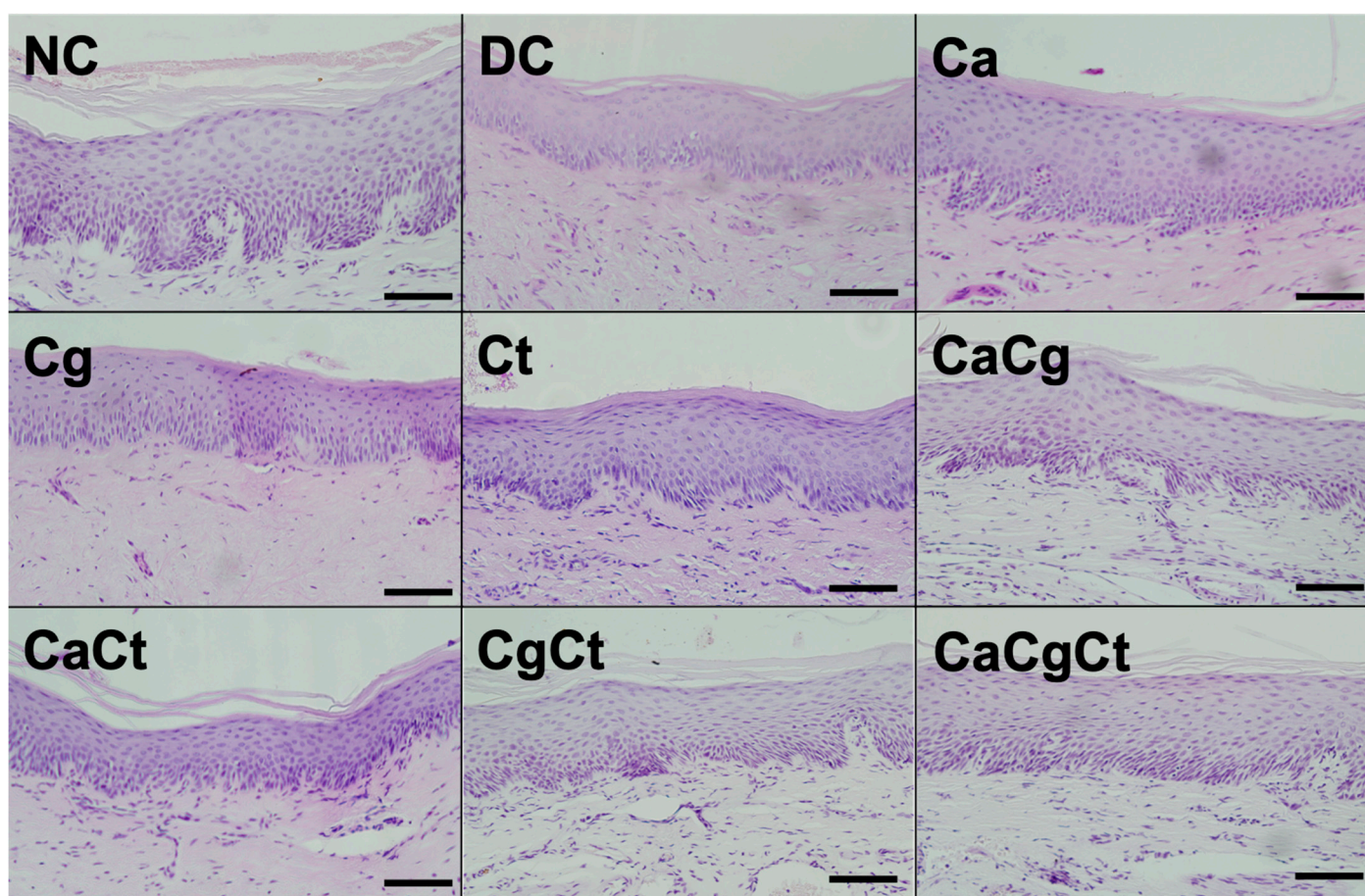


**Figure S2.** Bland-Altman plots of difference against average (agreement analysis) between CFU/mL values from SDA and CHROMagar *Candida* recovered from palate (a) and device (b). The black line shows the mean of difference and the red lines show the upper and lower limits.



**Figure S3.** Photographs of the palate of male rats before (day 0) and after (day 42) the 4-week period with the acrylic device. In each group, both photographs (before and after) are from the same animal. The yellow arrows show red spots on the anterior papillae. CD: device control, Ca: *Candida albicans*, Cg: *Candida glabrata*, Ct: *Candida tropicalis*, CaCg: *C. albicans* + *C. glabrata*, CaCt: *C. albicans* + *C. tropicalis*, CgCt: *C. glabrata* + *C. tropicalis*, and CaCgCt: *C. albicans* + *C. glabrata* + *C. tropicalis* groups.





**Figure S4.** Histopathological sections of the palatal mucosa of male rats after the 4-week period with the acrylic device. NC: negative control; DC: device control, Ca: *C. albicans*, Cg: *C. glabrata*, Ct: *C. tropicalis*, CaCg: *C. albicans* + *C. glabrata*, CgCt: *C. glabrata* + *C. tropicalis*, CaCt: *C. albicans* + *C. tropicalis*, and CaCgCt: *C. albicans* + *C. glabrata* + *C. tropicalis*. Magnification: 20x. Scale bar: 100  $\mu$ m.