

Figure S1. Maximum likelihood (RAxML) tree based on ITS sequence data. The tree is rooted with *Amphisphaeria sorbi* (MFLUCC 13-0721) and *A. thailandica* (MFLU 18-0794).

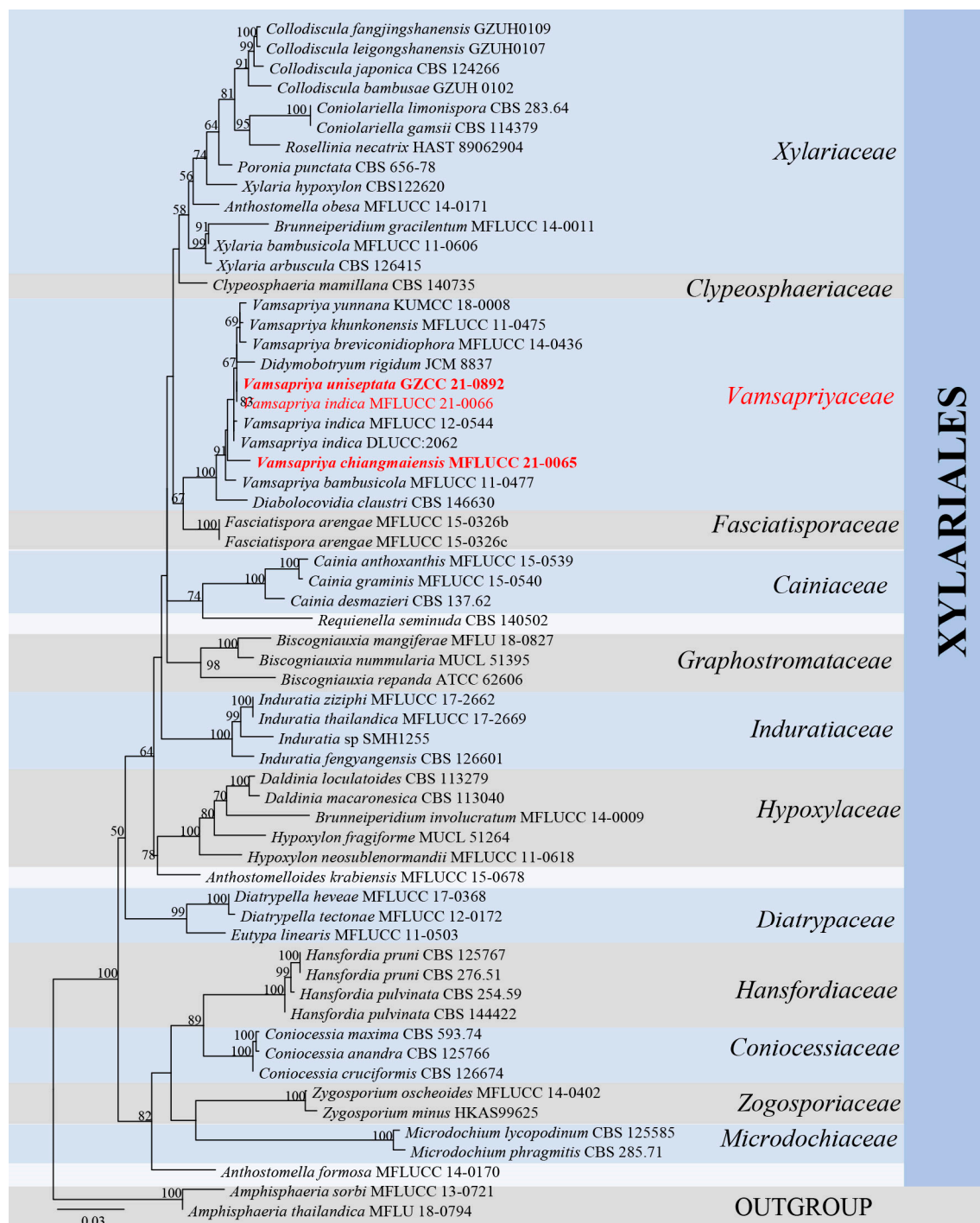


Figure S2. Maximum likelihood (RAxML) tree based on *LSU* sequence data. The tree is rooted with *Amphisphaeria sorbi* (MFLUCC 13-0721) and *A. thailandica* (MFLU 18-0794).

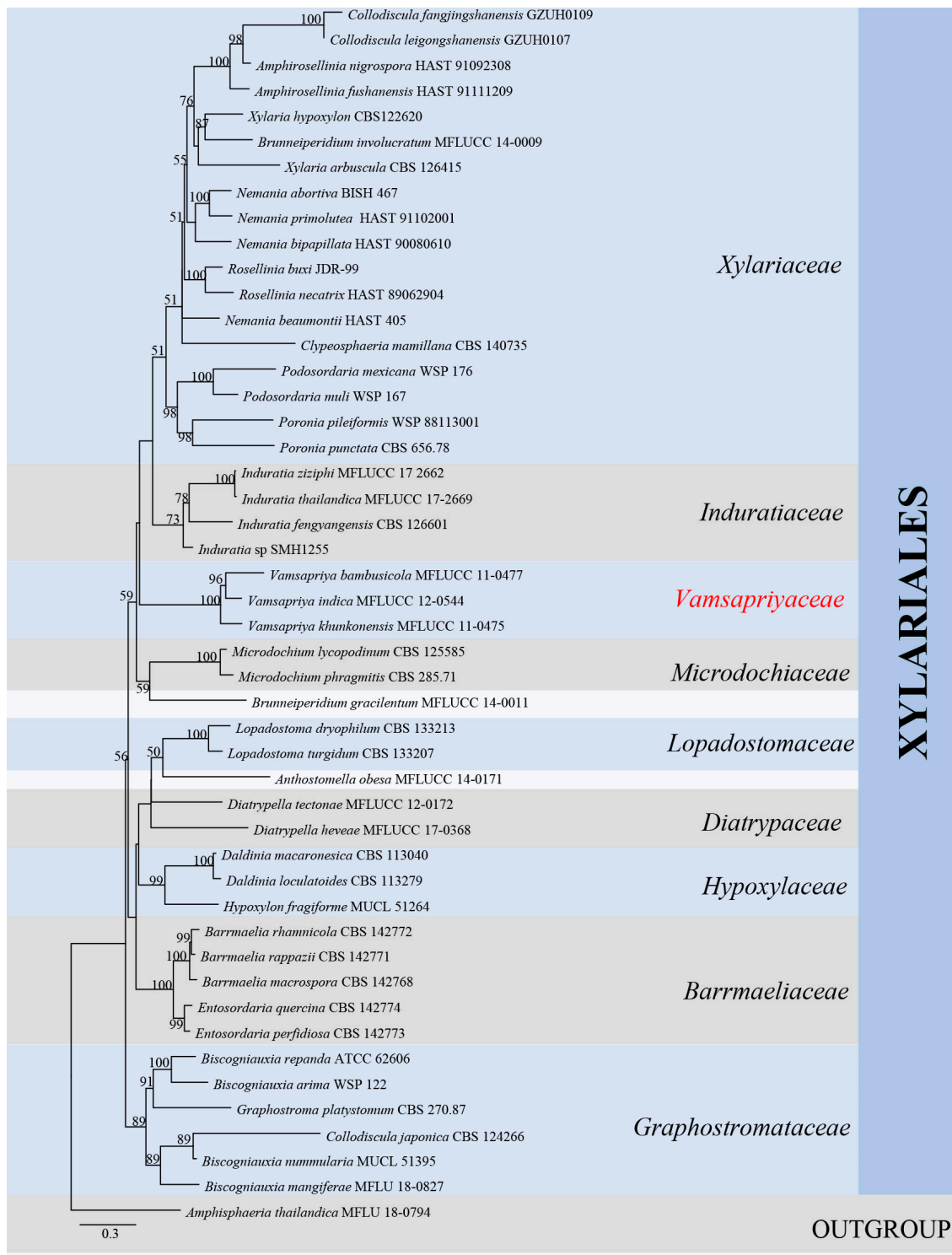


Figure S3. Maximum likelihood (RAxML) tree based on tub sequence data. The tree is rooted with *A. thailandica* (MFLU 18-0794).

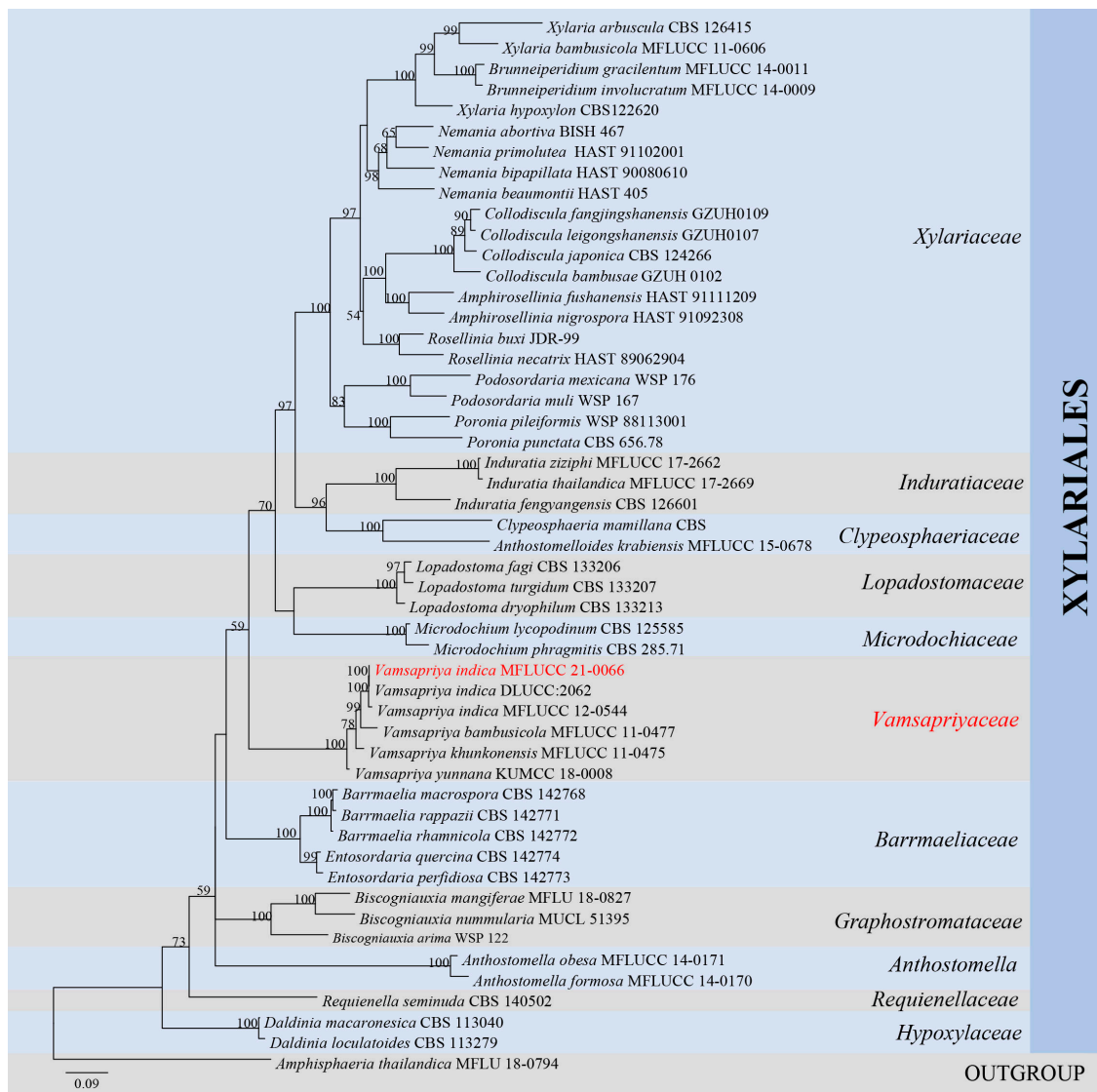


Figure S4. Maximum likelihood (RAxML) tree based on rpb2 sequence data. The tree is rooted with *A. thailandica* (MFLU 18-0794).