

Supplementary Materials

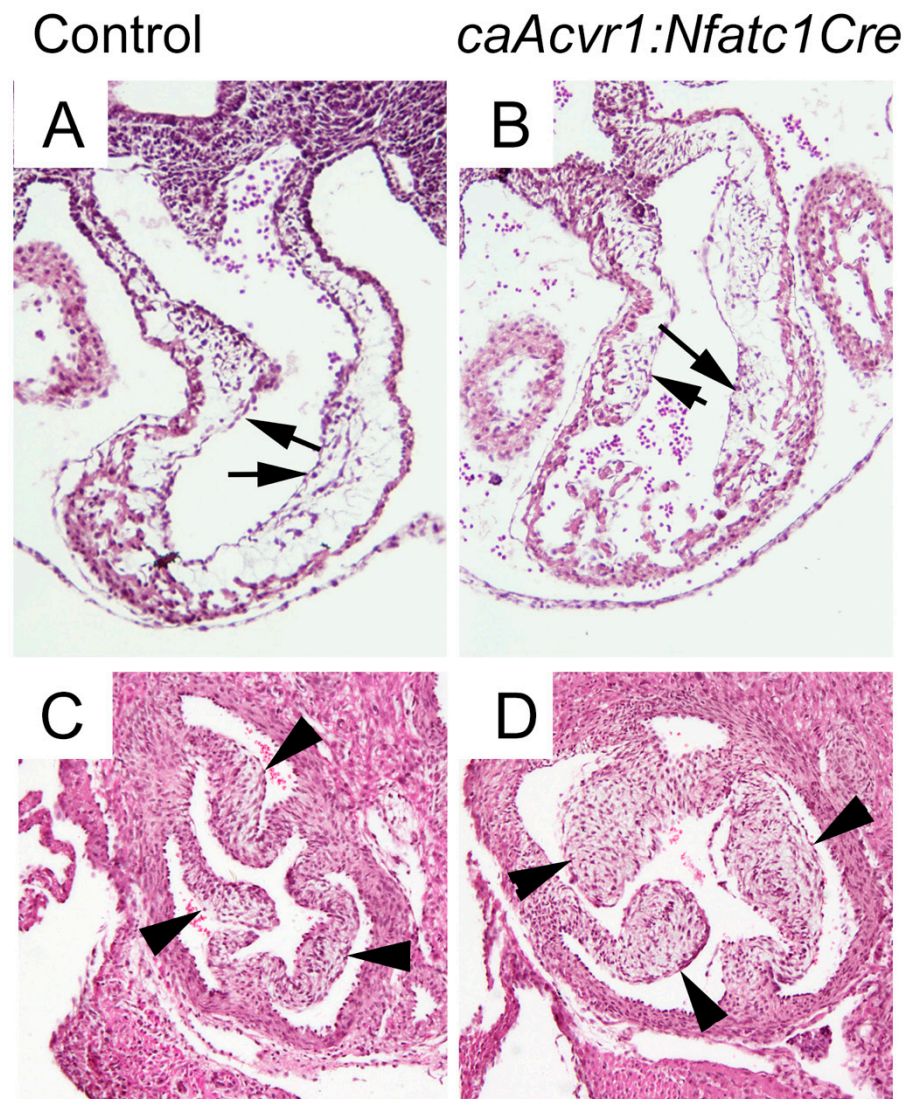


Figure S1. Mutant OFT endocardial cushions were not grossly affected at E11.5, while aortic valve leaflets were thickened at P3. The longitudinal section thru the OFT in a control (A) and the *caAcvr1:Nfatc1Cre* mutant (B) at E11.5. Black arrows point to proximal OFT cushions (A,B). Note that the orientation of samples in A and B is not identical. Cross-sections thru the aortic valves in the control (C) and mutant (D). Black arrowheads point to aortic valve leaflets (C,D). H&E staining.

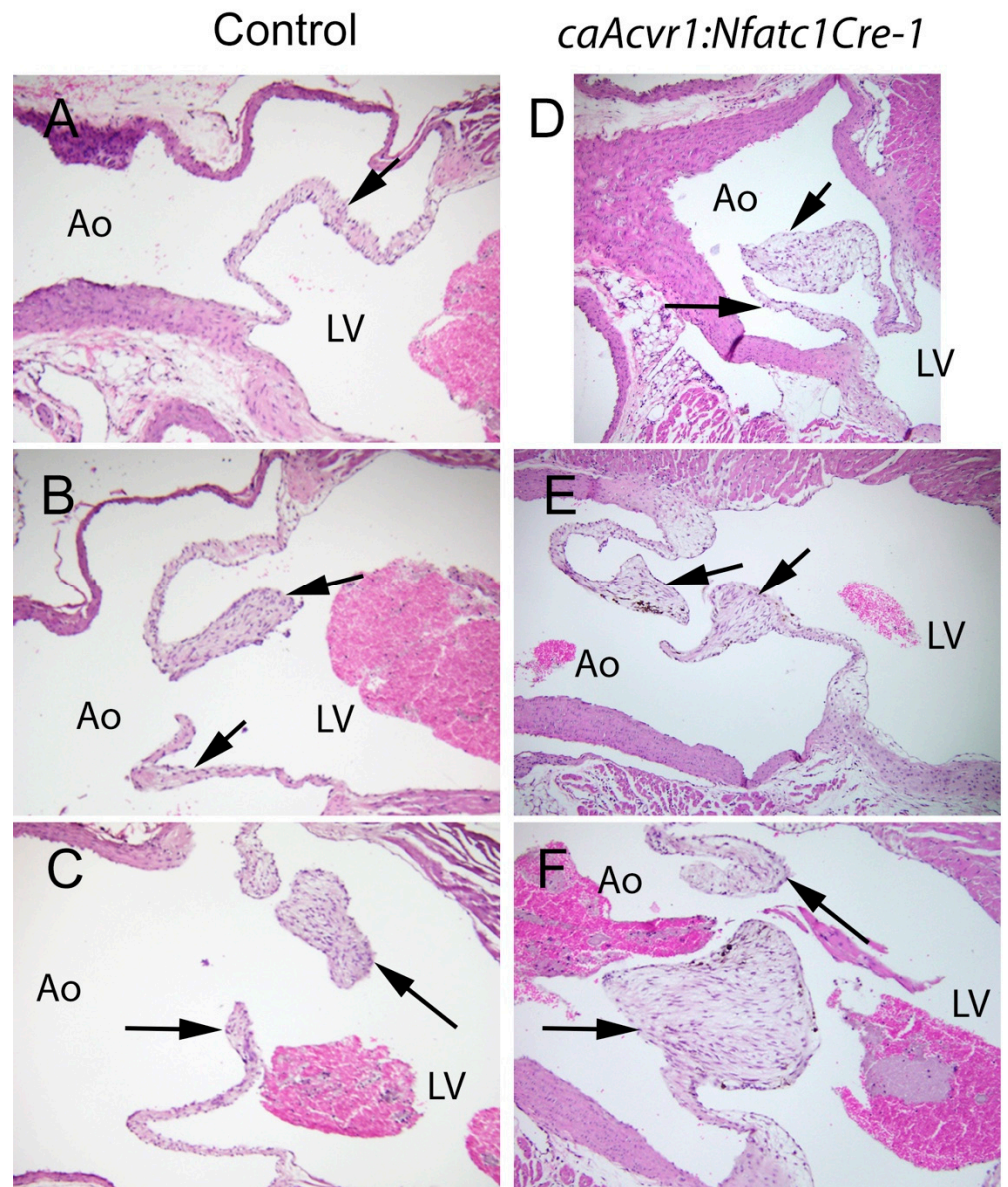


Figure S2. Comparison of the aortic valves between adult control and *caAcvr1:Nfatc1Cre* mutant mice. (A–C) Control; (D–F) mutants. Sagittal orientation from right lateral (A,D) to medial (C–F). Black arrows point to aortic valve leaflets (A–F). H&E staining. Ao, aorta; LV, left ventricle. P4 months.