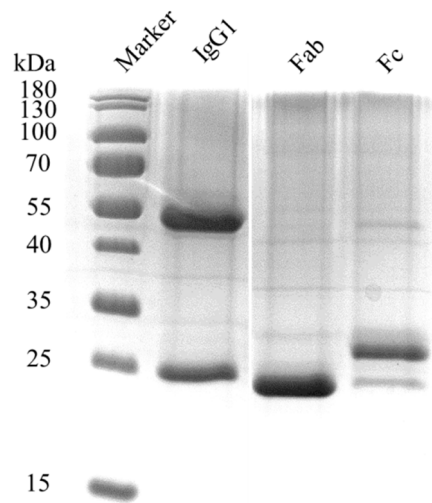
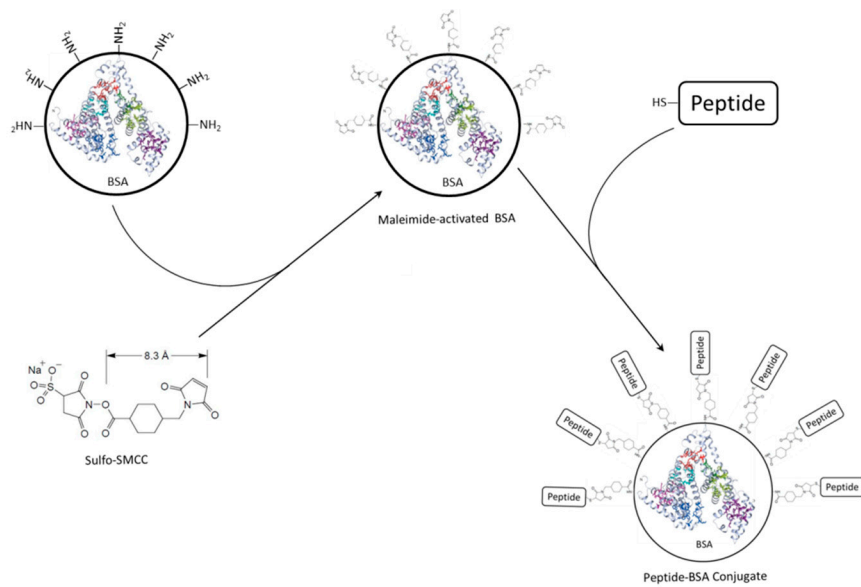


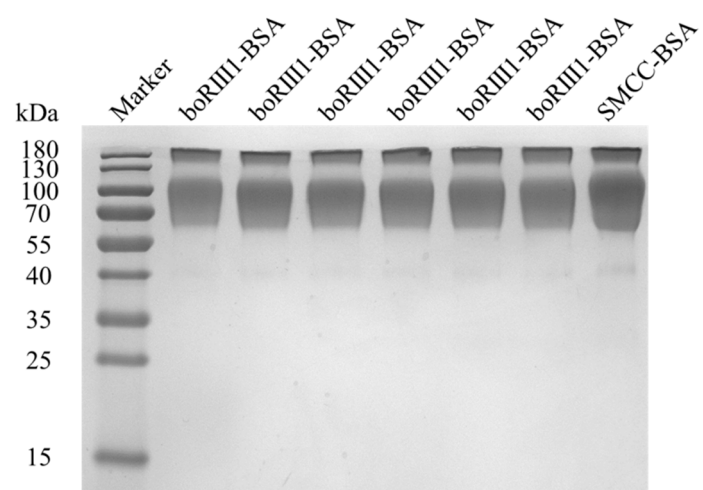
## Supplementary Figures



**Figure S1.** SDS-PAGE analysis of the purified bovine IgG1, as well as its Fab and Fc fragments.



**Figure S2.** Two-step reaction scheme for conjugating peptide and BSA with Sulfo-SMCC.



**Figure S3.** SDS-PAGE analysis of the boFc $\gamma$ RIII peptides coupled with BSA.