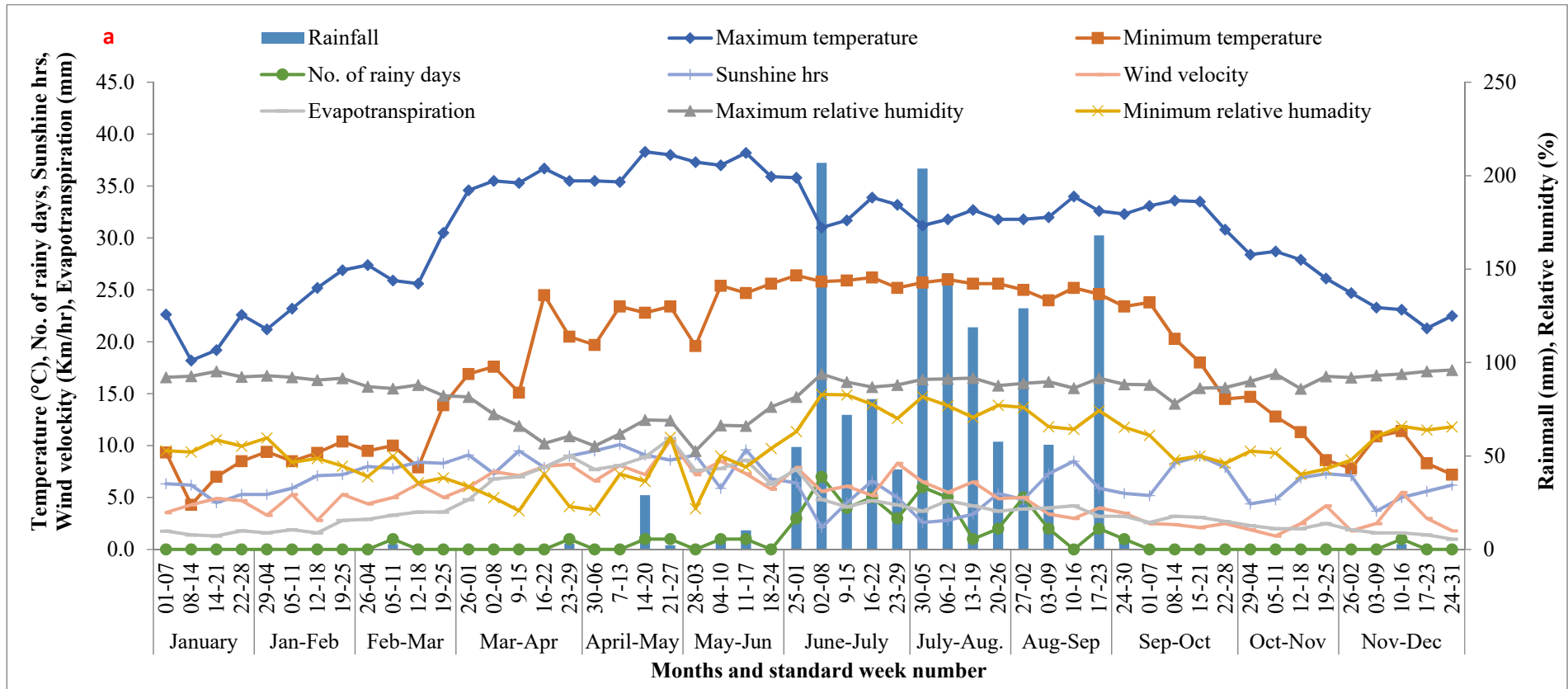


Supplementary file



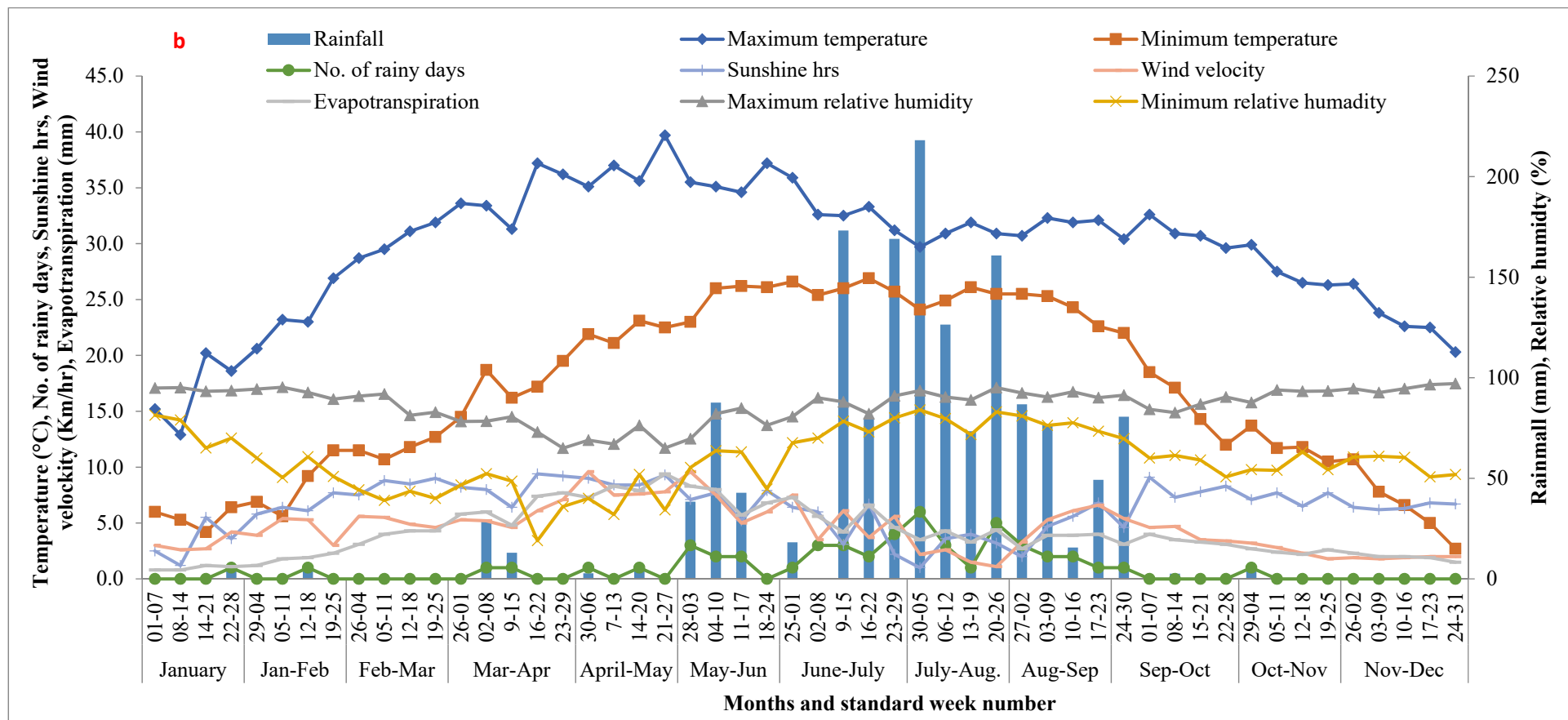


Figure S1: Weekly meteorological weather data for experimental year (a) 2017 and (b) 2018

Table S1: Physical and chemical attributes of soil before the execution of experiment

S. No.	Soil particulars	Values
1	Soil texture	Silty loam
2	pH	6.17
3	EC (dSm ⁻¹)	0.19
4	Organic carbon (%)	0.74
5	Available nitrogen (kg/ha)	203.25
6	Available phosphorus (kg/ha)	54.35
7	Available potassium (kg/ha)	232.64

Table S2: Data for correlation studies (n=76)

Yield	Dehydrogenase	Available N	Available P	Available K	SOC	Canopy Volume	Leaf Area	No of Flowers
44.13	256.58	185.49	39.46	234.26	77.50	31.54	70.46	34.60
45.48	314.44	219.24	55.79	252.06	74.50	37.99	75.71	38.26
41.34	226.97	178.07	35.94	223.68	75.50	27.96	67.66	29.80
53.45	374.26	241.62	63.17	259.42	78.50	38.84	80.46	43.96
46.75	337.81	216.50	59.91	253.91	76.25	40.17	77.99	37.80
43.20	280.09	189.08	40.83	236.70	75.25	26.85	73.65	34.34
45.67	299.95	216.50	52.49	248.51	76.25	36.91	73.44	38.12
41.29	237.05	182.67	38.26	227.68	75.25	26.28	67.85	29.48
38.82	282.14	175.74	33.64	200.94	73.25	21.22	65.94	30.65
44.88	183.14	190.03	46.28	246.72	77.90	37.09	70.98	39.46
40.73	217.62	179.97	35.31	208.09	79.90	31.84	69.98	32.69
38.37	288.14	172.50	31.79	187.45	75.90	20.99	64.30	27.85
44.55	195.92	189.68	43.08	238.78	78.90	32.73	67.98	35.04
39.54	180.05	174.69	32.60	196.97	77.90	21.85	65.85	28.08
37.66	169.47	168.83	31.26	184.71	80.90	20.73	64.80	24.50
42.12	191.38	181.35	39.17	229.63	76.90	32.76	66.25	34.00
40.20	240.96	170.67	31.47	191.25	75.90	22.55	66.39	29.00
37.76	174.26	165.58	30.19	181.17	78.90	19.88	62.27	25.14
36.97	167.74	157.07	27.35	160.30	78.40	11.84	62.20	27.21
41.78	262.91	191.01	45.39	218.36	75.50	27.41	71.41	34.66
46.29	324.5	235.68	61.92	238.21	77.50	34.73	72.55	41.70
41.19	235.24	186.57	41.38	210.76	73.50	26.92	66.56	31.50
52.95	383.36	254.13	59.97	253.35	77.50	44.70	79.88	41.57
45.86	353.41	221.87	64.09	258.05	74.25	43.55	78.18	39.20
42.98	267.08	180.03	47.02	226.17	78.25	28.02	69.64	33.04
45.89	312.42	221.87	57.58	239.74	73.25	34.50	74.52	39.74
40.64	218.13	164.46	43.21	232.70	77.25	30.45	68.80	35.10
40.85	286.07	183.84	35.93	187.00	78.25	28.41	70.51	29.19
44.32	177.11	207.64	44.41	233.85	82.90	33.10	72.86	37.16
40.40	217.67	167.83	40.44	201.87	78.90	26.44	68.27	28.79
38.18	285.89	189.83	33.46	193.13	73.90	24.98	67.55	27.09
43.42	211.16	207.29	37.64	242.39	77.90	27.03	71.81	35.85
38.71	191.59	181.62	26.77	190.71	74.90	28.97	65.73	28.75
38.89	168.7	158.19	35.97	176.67	78.90	23.80	64.75	26.65
40.70	182.46	167.82	46.81	216.79	74.90	26.08	69.53	31.25

37.89	239.75	196.77	37.67	176.16	77.90	22.46	69.62	26.51
38.49	176.97	155.09	34.58	172.82	75.90	18.71	62.64	24.89
36.58	158.54	162.77	23.06	170.25	77.36	14.29	65.40	26.03
42.50	269.34	196.34	33.55	238.09	78.50	30.96	69.44	32.71
47.03	336.31	229.06	50.06	258.09	76.50	38.70	75.32	39.47
41.02	234.17	164.39	33.44	228.29	74.50	24.66	67.90	32.63
52.26	388.1	228.71	69.38	262.16	75.50	44.38	77.74	42.26
47.87	369.39	214.95	54.41	243.57	78.25	42.52	78.11	40.69
41.66	269	170.71	35.71	242.94	73.25	31.63	72.01	35.89
45.54	294.52	214.95	49.50	253.70	78.25	29.36	73.09	41.47
42.53	247.68	185.96	39.52	237.88	76.25	22.51	68.94	32.65
39.52	291.46	165.12	28.77	207.74	75.25	28.09	66.00	28.16
44.47	194.21	177.89	48.94	252.67	79.90	24.90	73.04	35.10
41.64	225.77	185.37	44.33	211.59	75.90	20.70	69.38	30.62
39.07	297.9	160.09	38.87	194.51	77.90	22.44	67.61	27.44
43.25	208.09	177.54	45.77	225.71	75.90	33.25	71.47	33.76
40.25	195.54	165.79	38.73	199.76	79.90	24.44	65.62	26.90
37.18	173.44	186.64	24.55	192.56	77.90	24.21	64.61	28.22
42.12	184.79	198.41	41.65	234.40	79.90	28.27	69.08	27.89
38.96	242.17	158.27	32.85	198.71	76.90	25.67	68.01	25.76
37.26	162.61	175.70	31.65	184.62	74.90	17.82	60.81	26.89
37.08	157.66	151.99	30.75	181.20	77.72	13.97	63.04	28.26
41.77	263.3	167.77	41.36	243.01	76.50	26.85	71.73	36.34
46.03	322.38	204.77	52.81	265.18	79.50	34.22	75.04	37.68
41.22	218.49	199.95	38.97	235.67	77.50	27.87	69.64	29.50
51.56	388.73	223.79	64.91	256.71	80.50	37.56	80.28	40.78
47.14	362.02	221.69	58.49	263.41	77.25	41.70	78.08	41.84
43.03	280.06	210.84	37.26	240.10	74.25	33.54	72.38	35.94
46.73	314.49	221.69	54.52	255.69	77.25	36.42	74.61	36.04
41.39	232.84	198.08	31.91	217.19	73.25	30.99	69.07	35.82
39.70	297.91	196.07	38.46	211.85	77.25	28.57	66.07	30.80
44.27	173.96	210.48	41.32	254.61	80.90	34.13	72.66	35.88
41.40	214.04	196.01	46.81	206.86	77.90	29.26	68.13	28.28
38.45	305.89	177.67	25.59	176.56	78.90	27.85	67.97	27.08
44.18	198.54	210.13	47.22	250.56	80.90	30.73	73.04	37.46
39.69	204.72	186.54	34.40	203.88	76.90	29.60	63.38	29.40
37.66	177.82	174.86	33.48	186.74	74.90	23.73	65.55	28.76
42.50	191.24	190.74	32.04	241.61	78.90	26.30	66.61	35.36
39.53	252.07	175.91	25.53	202.29	74.90	27.34	66.15	29.52
36.63	183.74	179.46	24.67	188.72	76.90	14.20	61.47	26.22
36.77	162.48	167.77	33.47	172.06	77.11	17.70	65.19	25.08