

Figure S1. Chromatogram of 4-amino-3-nitrophenol (500 ng/mL) and 2-aminophenol (IS) in methanol (A) and ethanol (B).

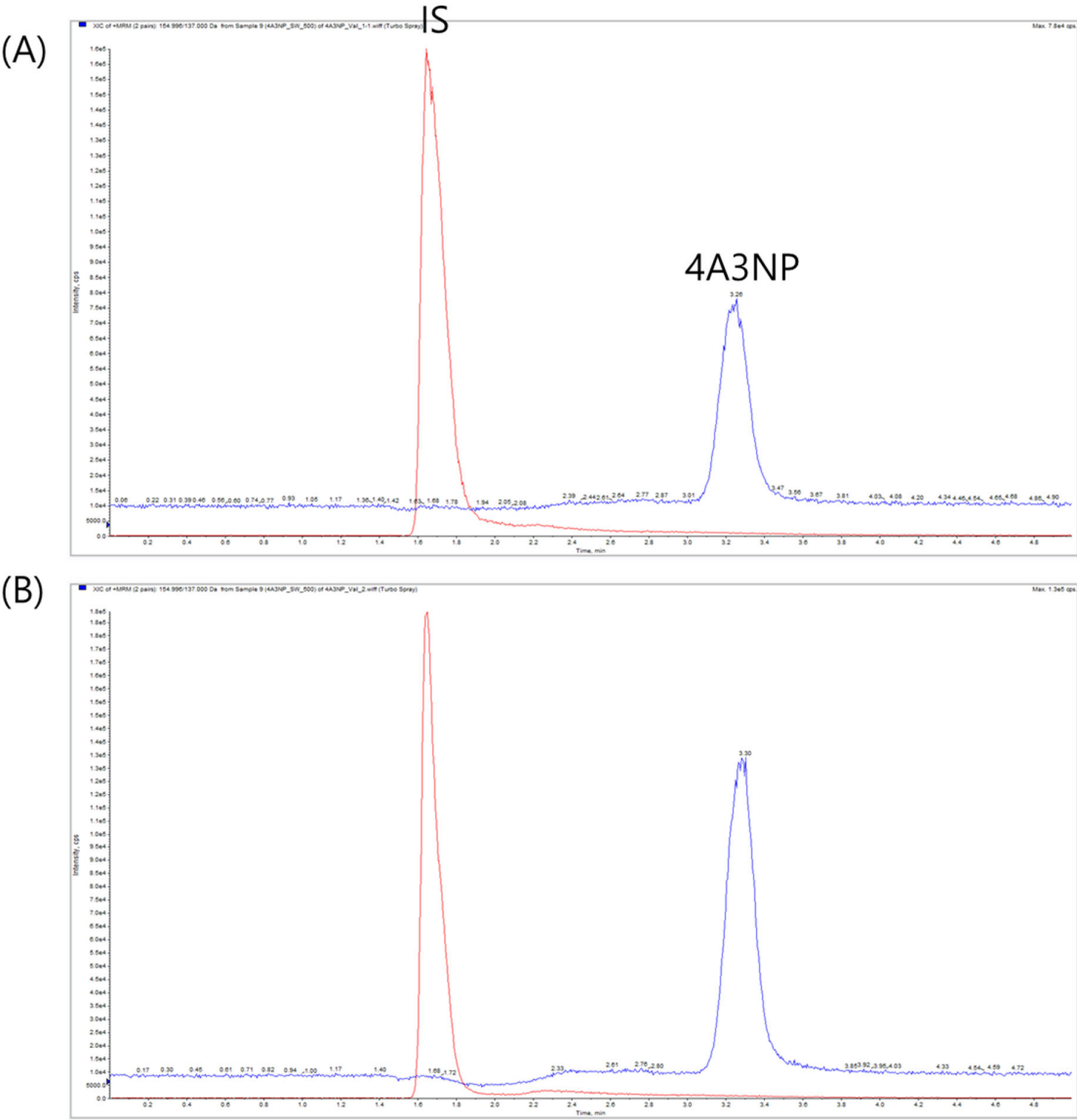
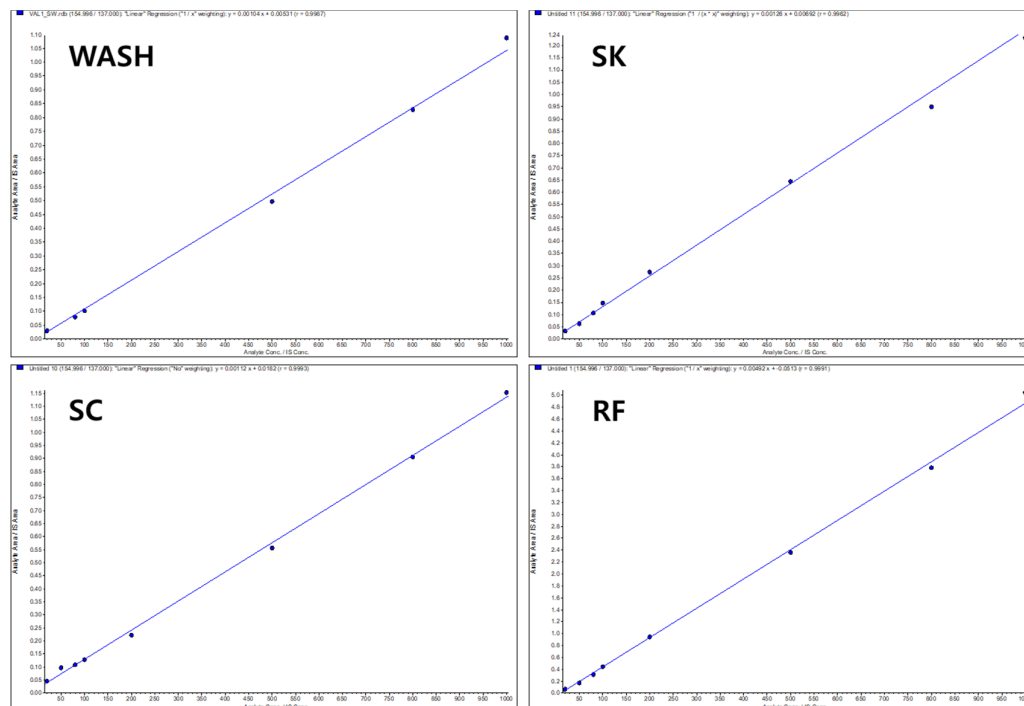


Figure S2. Calibration curves (A) and No carry-over (B)

(A) Calibration curves of 4A3NP in each matrix



(B) No carry-over effects of 4A3NP by 750  $\mu\text{g/mL}$  in each matrix

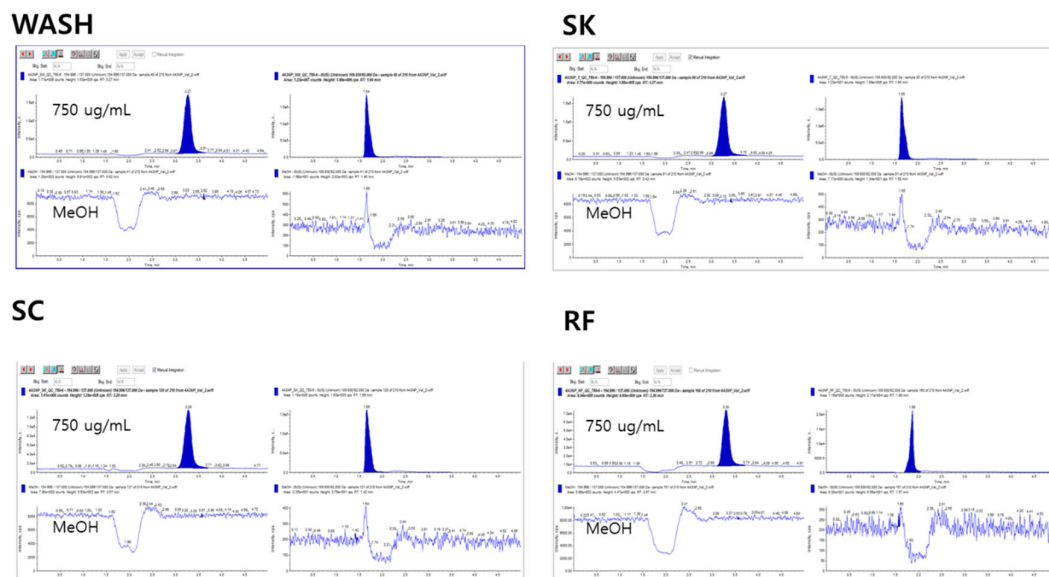


Figure S3. Chromatograms at (A) the WASH\_30 min (highest concentration) and (B) SC (lowest concentration) samples.

