

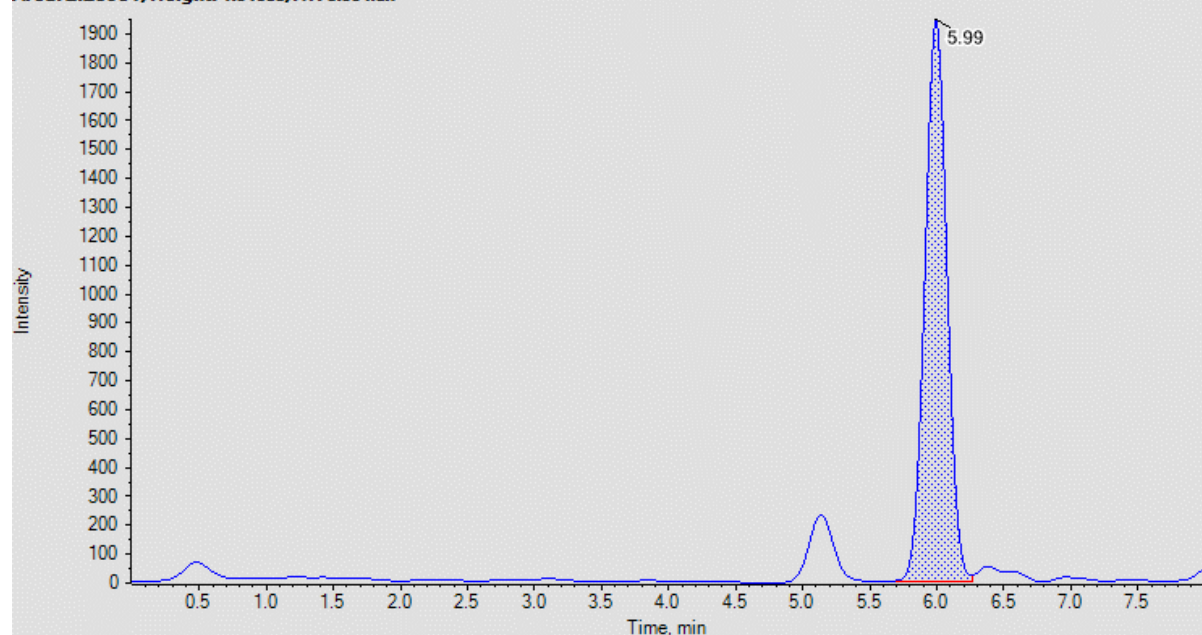
**Table S1. monitoring ions (+/- 50 ppm) of PFAS targeted in this study and their respective internal standards.**

<b>Compound</b>	<b>m/z</b>	<b>Internal Standard</b>	<b>m/z</b>
<b>PFBS</b>	298.94299	<b>MPFBS</b>	301.95306
<b>PFHxS</b>	398.93660	<b>MPFHxS</b>	402.94509
<b>PFHpS</b>	448.93341	<b>M8PFOS</b>	506.95706
<b>PFOS</b>	498.93022	<b>M8PFOS</b>	506.95706
<b>PFNS</b>	548.92702	<b>M8PFOS</b>	506.95706
<b>PFDS</b>	598.92383	<b>M8PFOS</b>	506.95706
<b>PFPeA</b>	218.98618	<b>MPFPeA</b>	222.99959
<b>PFHxA</b>	312.97281	<b>M5PFHxA</b>	317.98959
<b>PFHpA</b>	318.97979	<b>MPFHpA</b>	322.99321
<b>PFOA</b>	412.96642	<b>M8PFOA</b>	420.99326
<b>PFNA</b>	462.96323	<b>M9PFNA</b>	471.99343
<b>PFDA</b>	468.97021	<b>MPFDA</b>	474.99034
<b>PFUdA</b>	562.95684	<b>MPFUdA</b>	569.98033
<b>PFDoA</b>	612.95365	<b>MPFDoA</b>	614.96036
<b>PFTTrDA</b>	662.95046	<b>MPFTeDA</b>	670.96414
<b>PFTeDA</b>	712.94726	<b>MPFTeDA</b>	670.96414
<b>FOSA</b>	496.93837	<b>M8FOSA</b>	504.96521
<b>MeFOSA</b>	511.96185	<b>d3-MeFOSA</b>	514.98068
<b>MeFOSE</b>	600.98572	<b>d7-MeFOSE</b>	608.09658
<b>EtFOSA</b>	525.9775	<b>d3-MeFOSA</b>	514.98068
<b>EtFOSE</b>	616.00919	<b>d7-MeFOSE</b>	608.09658

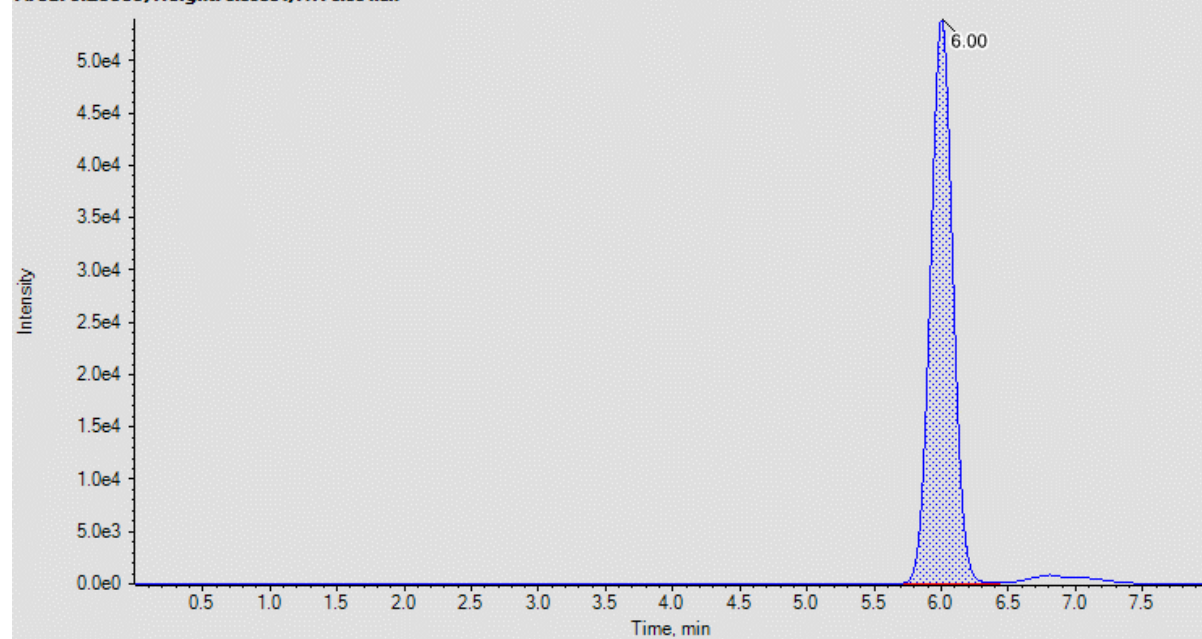
**Table S2. Method LODs (pg/ $\mu$ L) and LOQs (mg/kg) for all target PFAS in this study**

<b>Compound</b>	<b>LOD (pg/<math>\mu</math>L)</b>	<b>LOQ (mg/kg)</b>
<b>PFUdA</b>	1.2	0.2
<b>PFBS</b>	0.6	0.1
<b>PFDA</b>	0.6	0.1
<b>PFDoA</b>	1.2	0.2
<b>PFDS</b>	0.6	0.1
<b>PFHpA</b>	0.6	0.1
<b>PFHpS</b>	0.6	0.1
<b>PFHxA</b>	0.6	0.1
<b>PFHxS</b>	0.6	0.1
<b>PFNA</b>	0.6	0.1
<b>PFNS</b>	0.6	0.1
<b>PFOA</b>	0.6	0.1
<b>PFOS</b>	0.6	0.1
<b>PFPeA</b>	2.4	0.4
<b>PFTeDA</b>	1.2	0.2
<b>PFTTrDA</b>	1.2	0.2
<b>EtFOSA</b>	1.2	0.2
<b>EtFOSE</b>	1.2	0.2
<b>FOSA</b>	0.6	0.1
<b>MeFOSA</b>	1.2	0.2
<b>MeFOSE</b>	1.2	0.2

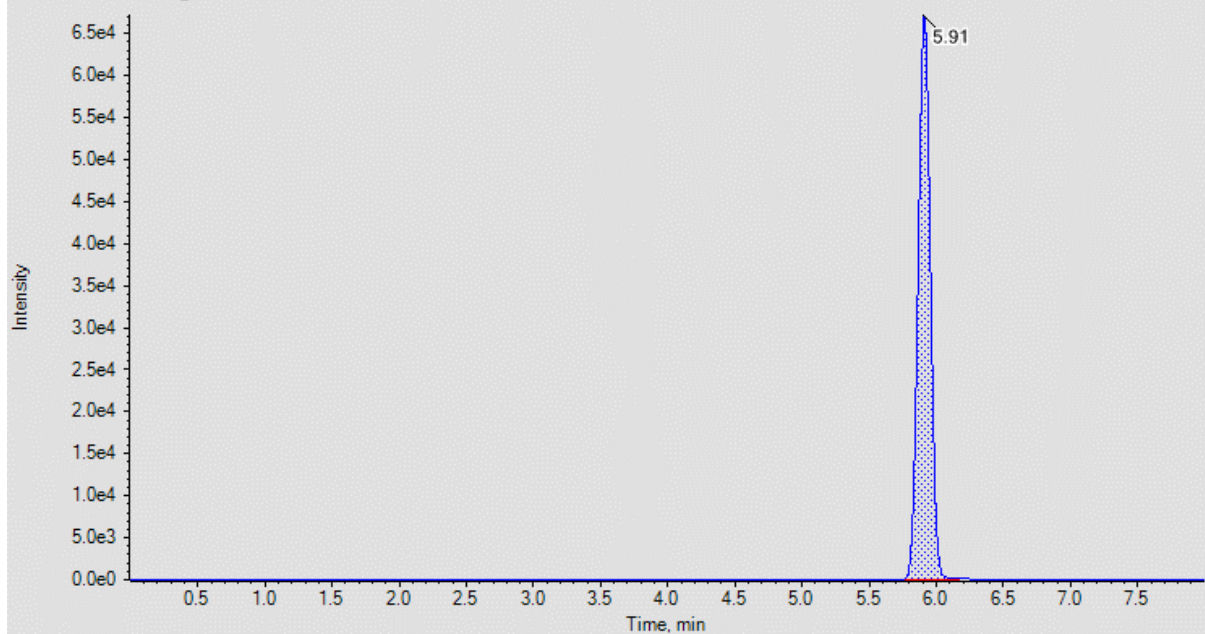
F-Ca-2-D7-MeFOSE (Unknown) 609.0099 - 609.0710 - D:\AnalystData\Projects\PFASData\SD\SAFER\WAFER\_21\WAFER\_007.wiff (sa...  
Area: 2.239e4, Height: 1.946e3, RT: 5.99 min



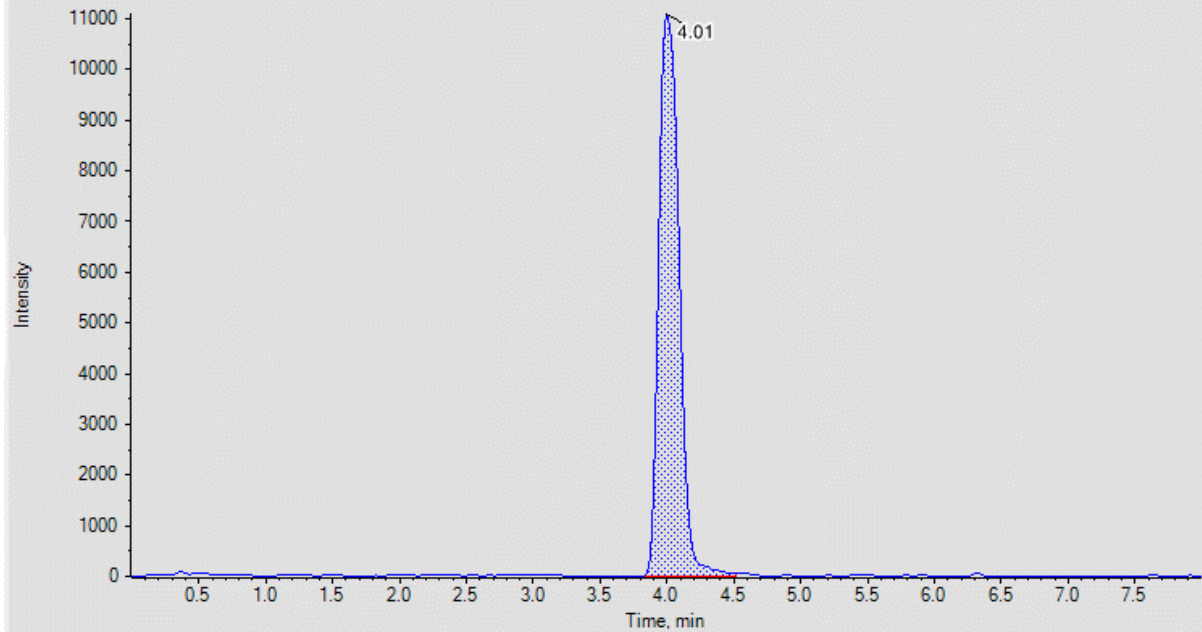
F-Ca-2-D-MeFOSE (Unknown) 514.9570 - 515.0084 - D:\AnalystData\Projects\PFASData\SD\SAFER\WAFER\_21\WAFER\_007.wiff (sa...  
Area: 6.288e5, Height: 5.393e4, RT: 6.00 min



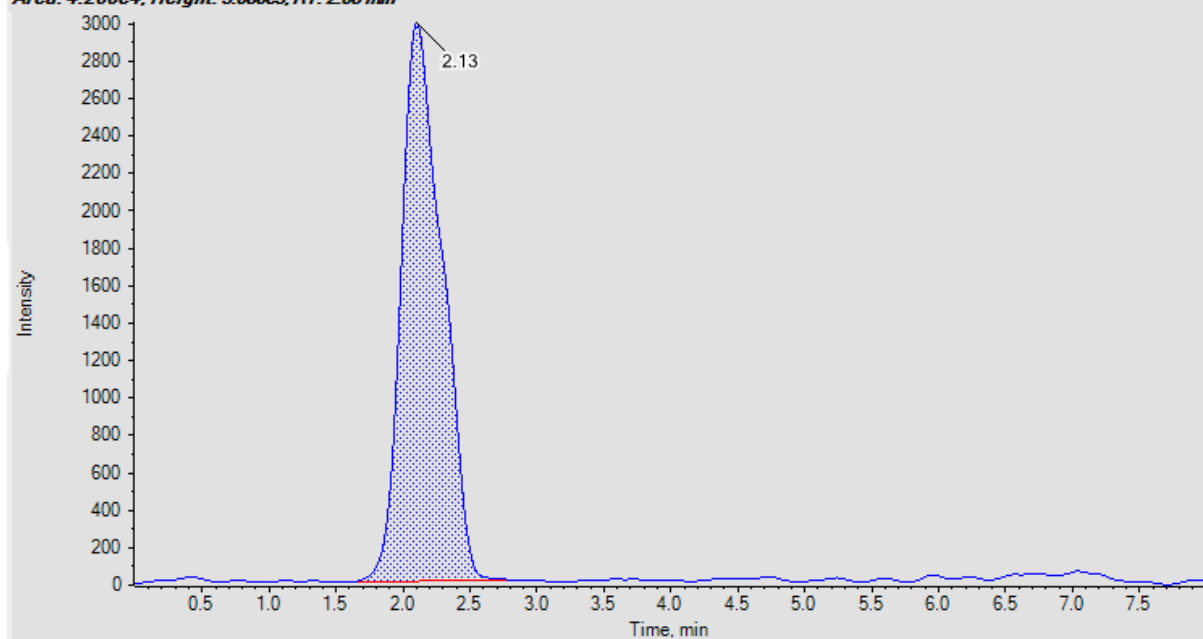
F-Ca-2 - M2PFTeDA (Unknown) 714.9165 - 714.9880 - D:\AnalystData\Projects\PFASData\DS\ISAFER\WAFER\_21\WAFER\_007.wiff (sa...  
Area: 4.258e5, Height: 6.716e4, RT: 5.91 min



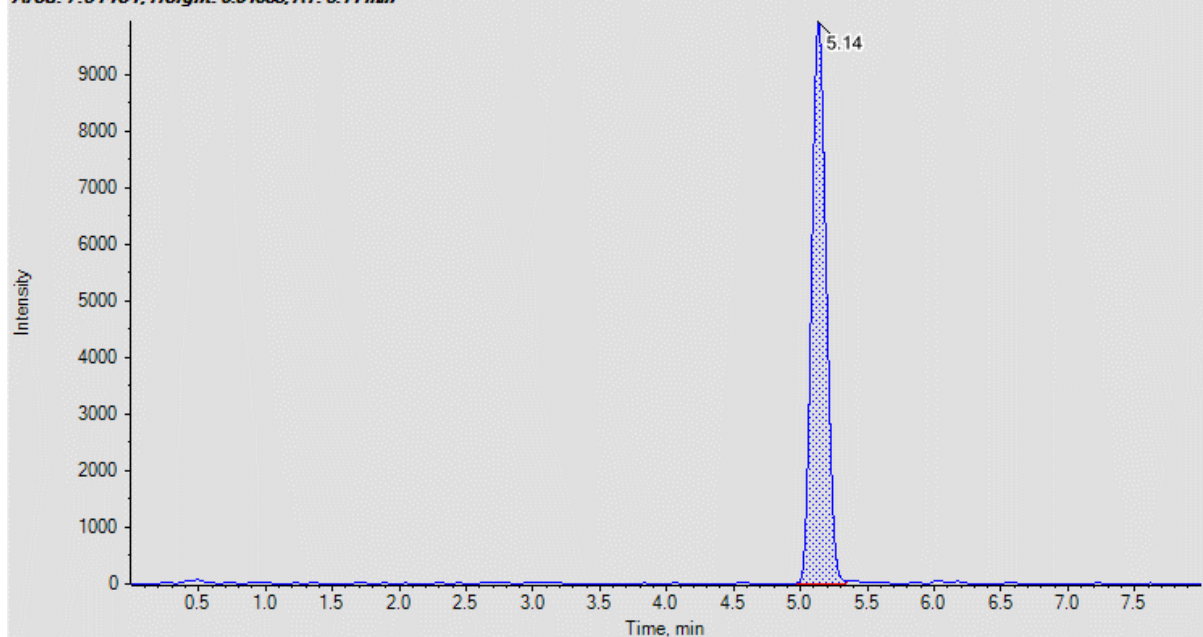
F-Ca-2 - M4PFHpA (Unknown) 321.9718 - 322.0040 - D:\AnalystData\Projects\PFASData\DS\ISAFER\WAFER\_21\WAFER\_007.wiff (sam...  
Area: 1.179e5, Height: 1.109e4, RT: 4.01 min



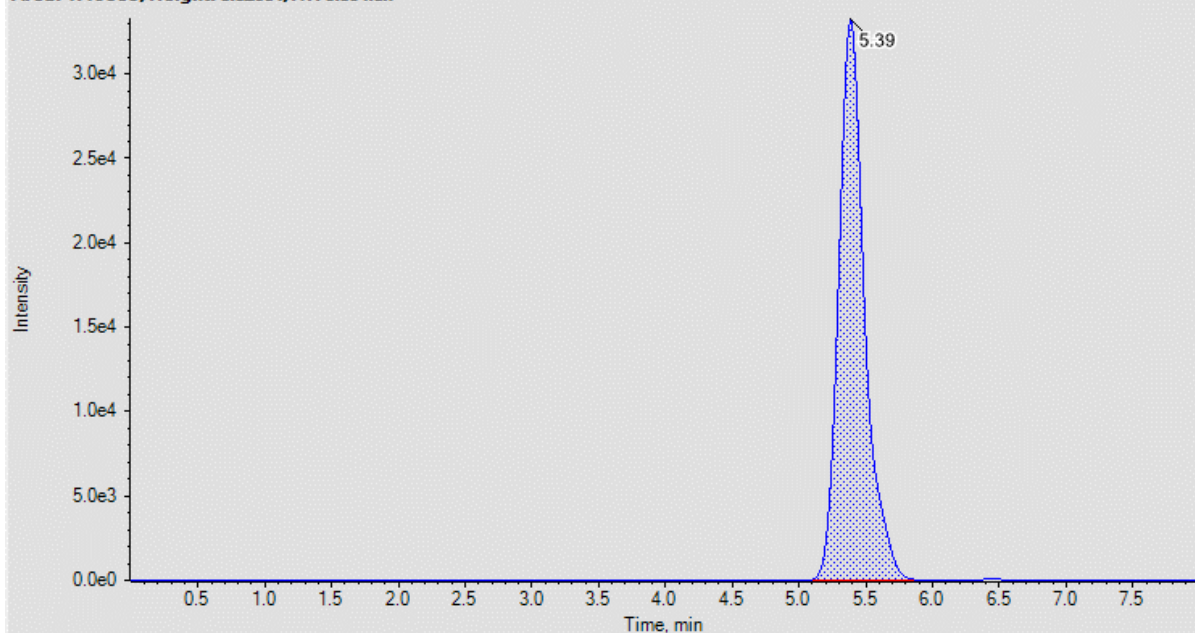
F-Ca-2 - M5PFPeA (Unknown) 222.9889 - 223.0112 - D:\AnalystData\Projects\PFASData\SD\SAFER\WAFER\_21\WAFER\_007.wiff (sam...  
Area: 4.266e4, Height: 3.080e3, RT: 2.08 min



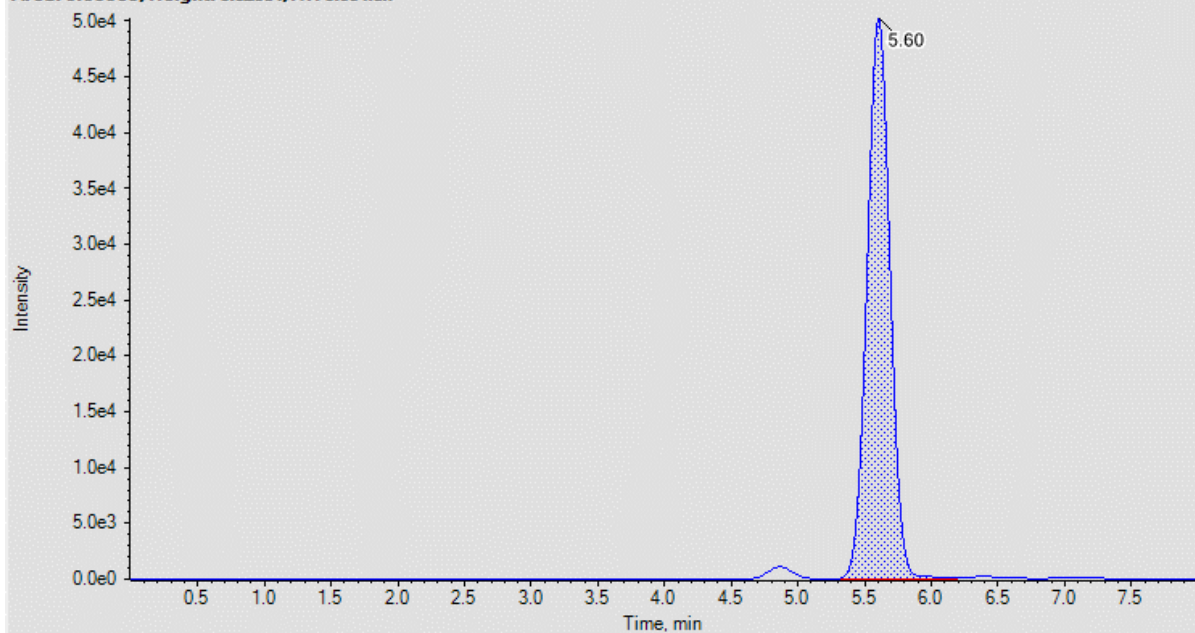
F-Ca-2 - M6PFDA (Unknown) 473.9586 - 474.0059 - D:\AnalystData\Projects\PFASData\SD\SAFER\WAFER\_21\WAFER\_007.wiff (sampl...  
Area: 7.514e4, Height: 9.940e3, RT: 5.14 min



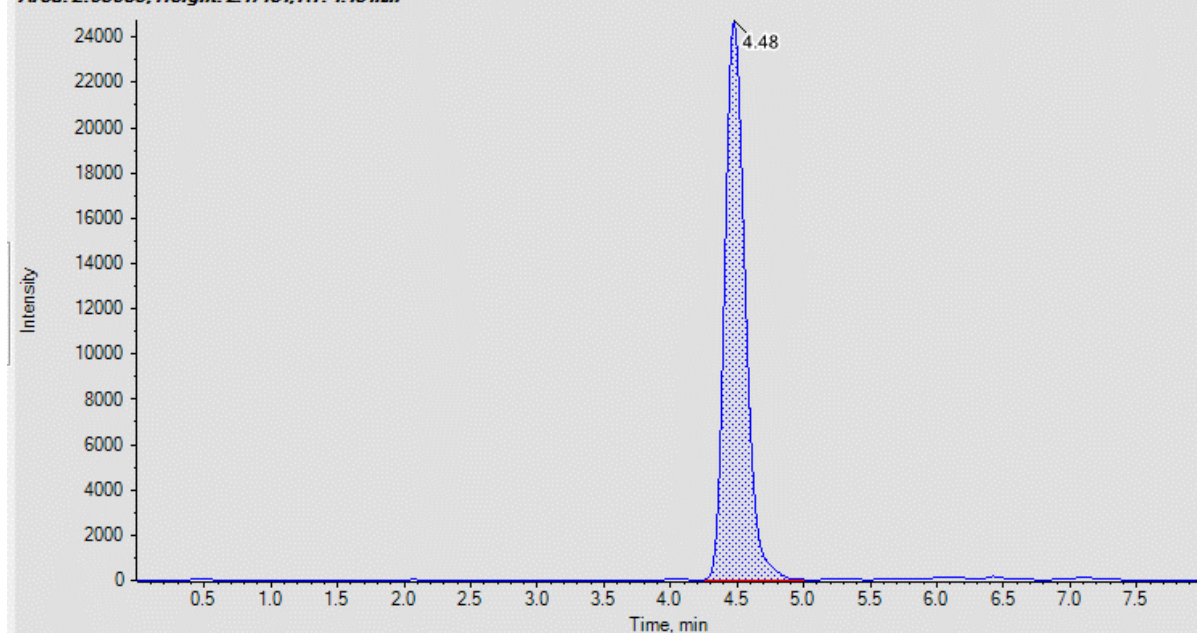
F-Ca-2-M7PFUdA (Unknown) 569.9494 - 570.0064 - D:\AnalystData\Projects\PFASData\DS\ISAFER\WAFER\_21\WAFER\_007.wiff (sam...  
Area: 4.493e5, Height: 3.326e4, RT: 5.39 min



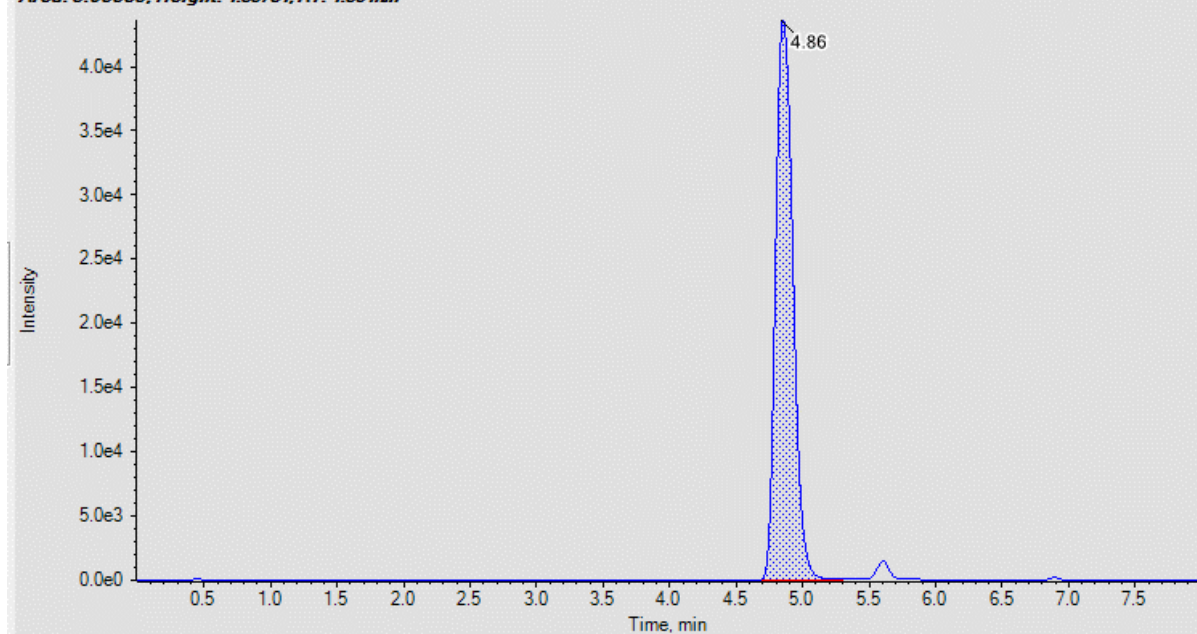
F-Ca-2-M8FOSA (Unknown) 505.9493 - 505.9999 - D:\AnalystData\Projects\PFASData\DS\ISAFER\WAFER\_21\WAFER\_007.wiff (sampl...  
Area: 6.035e5, Height: 5.020e4, RT: 5.60 min



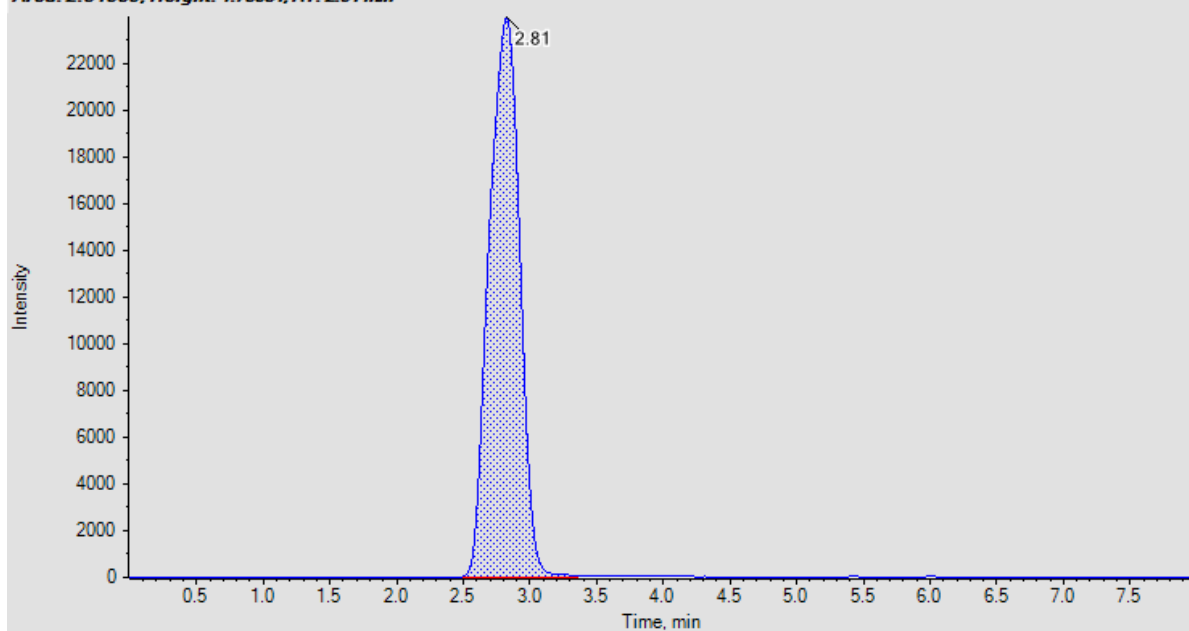
F-Ca-2-M8PFOA (Unknown) 420.9736 - 421.0156 - D:\AnalystData\Projects\VPFAS\Data\DS\ISAFER\WAFER\_21\WAFER\_007.wiff (sampl...  
Area: 2.636e5, Height: 2.471e4, RT: 4.48 min



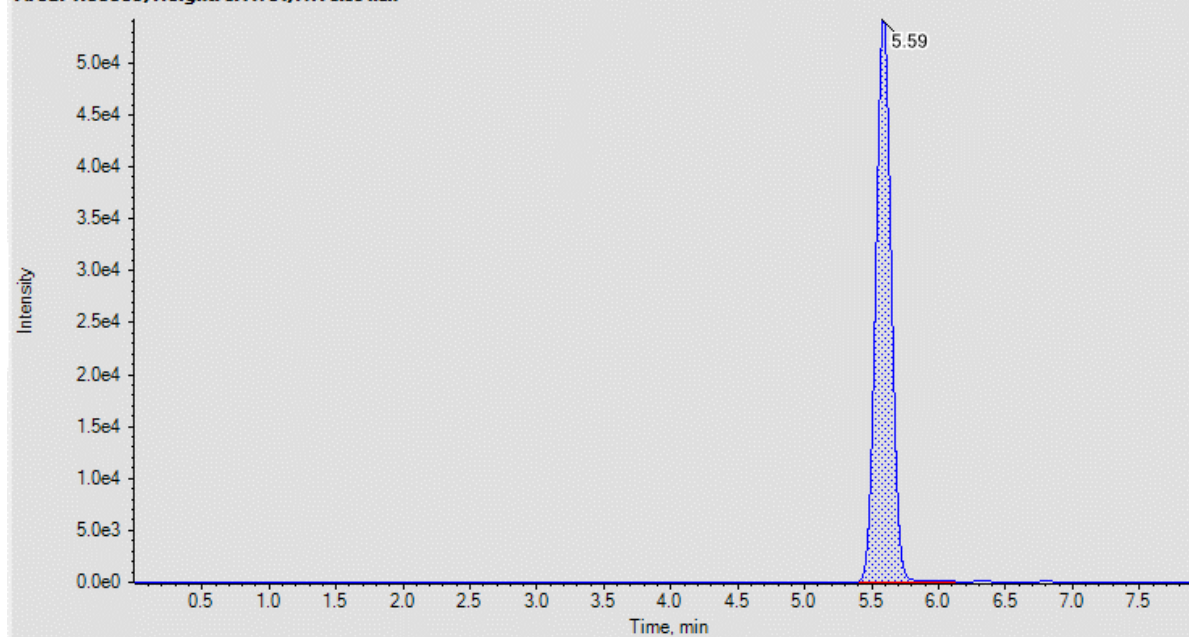
F-Ca-2-M8PFOA (Unknown) 506.9342 - 506.9849 - D:\AnalystData\Projects\VPFAS\Data\DS\ISAFER\WAFER\_21\WAFER\_007.wiff (sampl...  
Area: 3.988e5, Height: 4.357e4, RT: 4.86 min



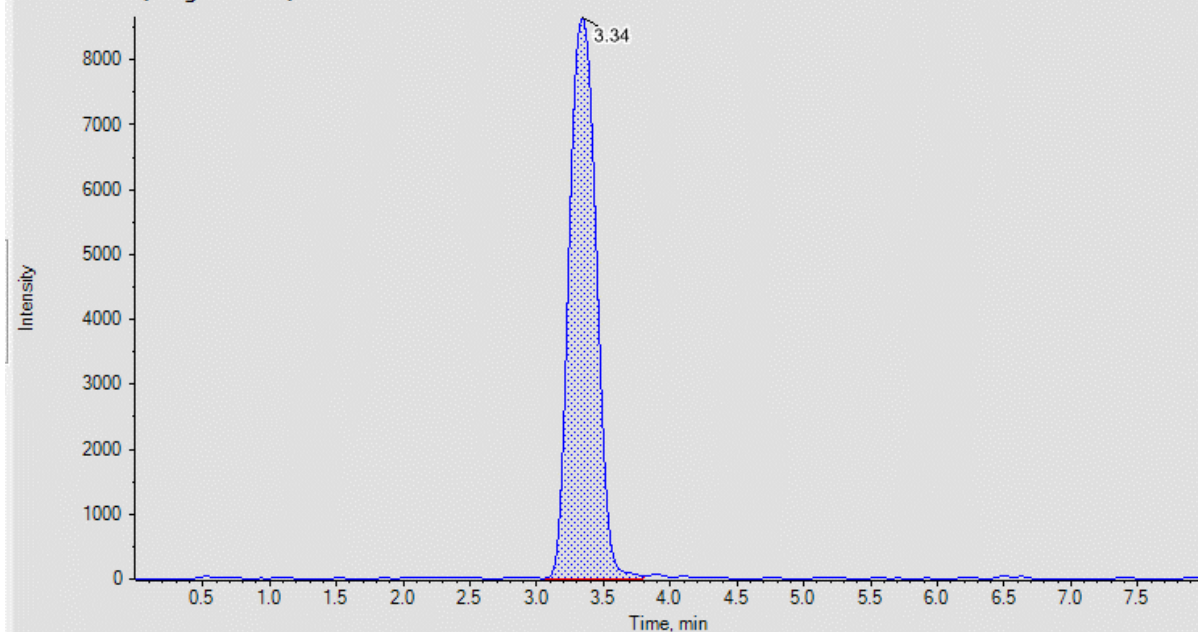
F-Ca-2 - MPFBS (Unknown) 301.9395 - 301.9697 - D:\AnalystData\Projects\IPFAS\Data\DS\ISAFER\WAFER\_21\WAFER\_007.wiff (sample...  
Area: 2.348e5, Height: 1.780e4, RT: 2.64 min



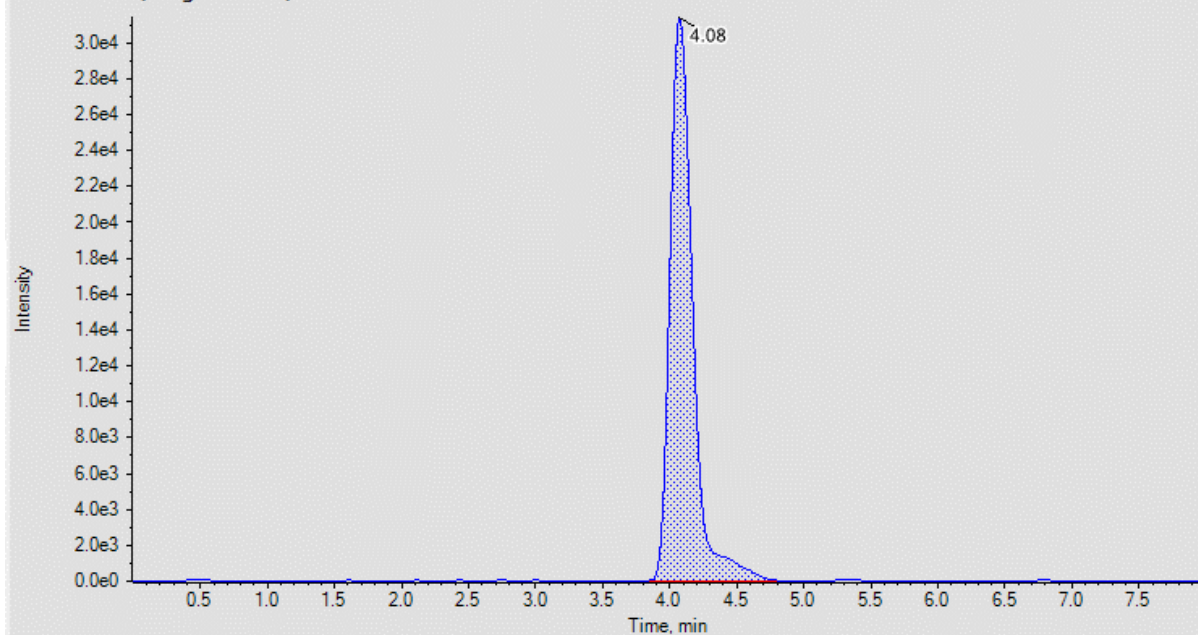
F-Ca-2 - MPFDoA (Unknown) 614.9272 - 614.9887 - D:\AnalystData\Projects\IPFAS\Data\DS\ISAFER\WAFER\_21\WAFER\_007.wiff (sample...  
Area: 4.383e5, Height: 5.417e4, RT: 5.59 min



**F-Ca-2-MPFHxA (Unknown) 269.9700 - 269.9970 - D:\AnalystData\Projects\PFASData\DS1\SAFER\WAFER\_21\WAFER\_007.wiff (sampl...**  
**Area: 1.218e5, Height: 8.641e3, RT: 3.34 min**



**F-Ca-2-MPFHxS (Unknown) 402.9262 - 402.9664 - D:\AnalystData\Projects\PFASData\DS1\SAFER\WAFER\_21\WAFER\_007.wiff (sampl...**  
**Area: 3.710e5, Height: 3.139e4, RT: 4.08 min**



F-Ca-2-MPFNA (Unknown) 467.9585-468.0053 - D:\AnalystData\Projects\VPFASData\DS1\SAFER\WAFER\_21\WAFER\_007.wiff (sample...  
Area: 3.290e5, Height: 3.301e4, RT: 4.85 min

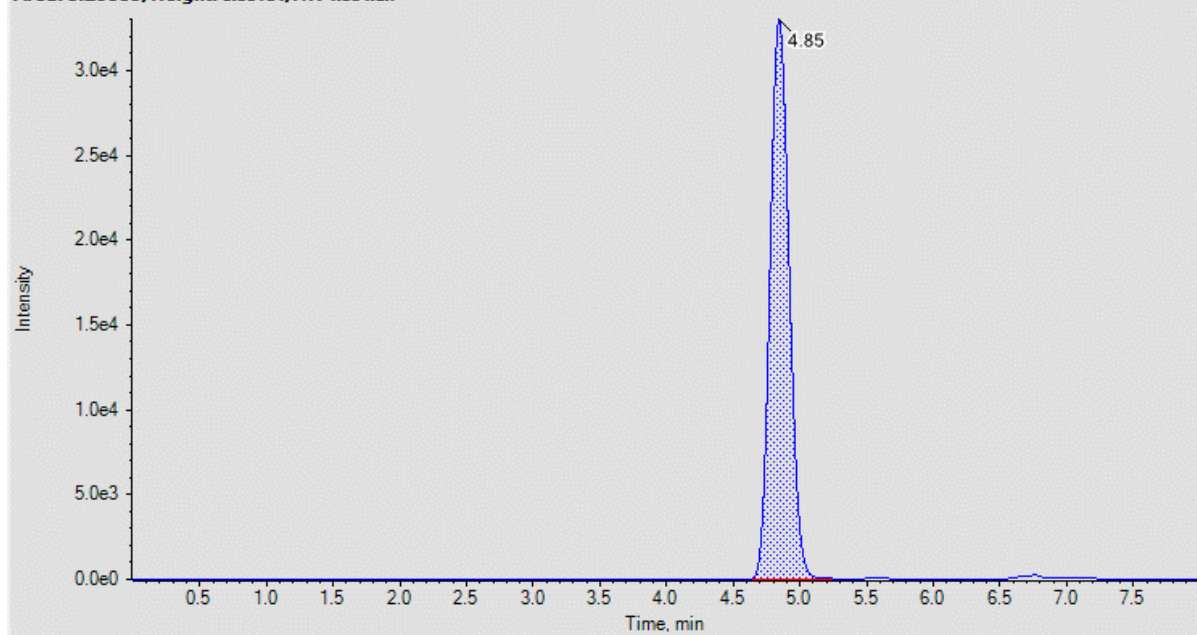


Figure S1. Internal standard chromatograms from a typical sample.