

Supplementary Materials: Acute and Chronic Toxicity of Binary Mixtures of Bisphenol A and Heavy Metals

Jun Yang, Anqi Liao, Shulin Hu, Yiwen Zheng, Shuli Liang, Shuangyan Han and Ying Lin

Table S1. Concentration of individual contaminant used in single toxicity test.

Contaminants	Concentration (mg/l)	
	Acute test	Chronic test
BPA	0.047–9.375	0.45–45
Cr	0.188–46.875	0.90–45
Cd	0.938–56.250	0.90–45
Pb	0.938–46.875	\
As	0.188–46.875	0.9–45
Hg	0.023–2.813	0.45–45
Ni	0.375–14.063	\

Table S2. Concentrations of individual contaminants in stocked mixtures.

Contaminants	Ratio	Concentration	
		BPA	Heavy metals
BPA+Cr	1:1	2.5EC ₅₀	2.5EC ₅₀
BPA+Pb	1:1	2.5EC ₅₀	2.5EC ₅₀
BPA+Hg	1:1	2.5EC ₅₀	2.5EC ₅₀
BPA+Ni	1:1	2.5EC ₅₀	2.5EC ₅₀
BPA+Cd	10 ^{-1.5} :1	0.152EC ₅₀	4.848EC ₅₀
BPA+Cd	10 ⁻¹ :1	0.455EC ₅₀	4.545EC ₅₀
BPA+Cd	10 ^{-0.5} :1	1.19EC ₅₀	3.81EC ₅₀
BPA+Cd	1:1	2.5EC ₅₀	2.5EC ₅₀
BPA+Cd	10 ^{0.5} :1	3.81EC ₅₀	1.19EC ₅₀
BPA+Cd	10 ¹ :1	4.545EC ₅₀	0.455EC ₅₀
BPA+Cd	10 ^{1.5} :1	4.848EC ₅₀	0.152EC ₅₀
BPA+As	10 ^{-1.5} :1	0.152EC ₅₀	4.848EC ₅₀
BPA+As	10 ⁻¹ :1	0.455EC ₅₀	4.545EC ₅₀
BPA+As	10 ^{-0.5} :1	1.19EC ₅₀	3.81EC ₅₀
BPA+As	1:1	2.5EC ₅₀	2.5EC ₅₀
BPA+As	10 ^{0.5} :1	3.81EC ₅₀	1.19EC ₅₀
BPA+As	10 ¹ :1	4.545EC ₅₀	0.455EC ₅₀
BPA+As	10 ^{1.5} :1	4.848EC ₅₀	0.152EC ₅₀

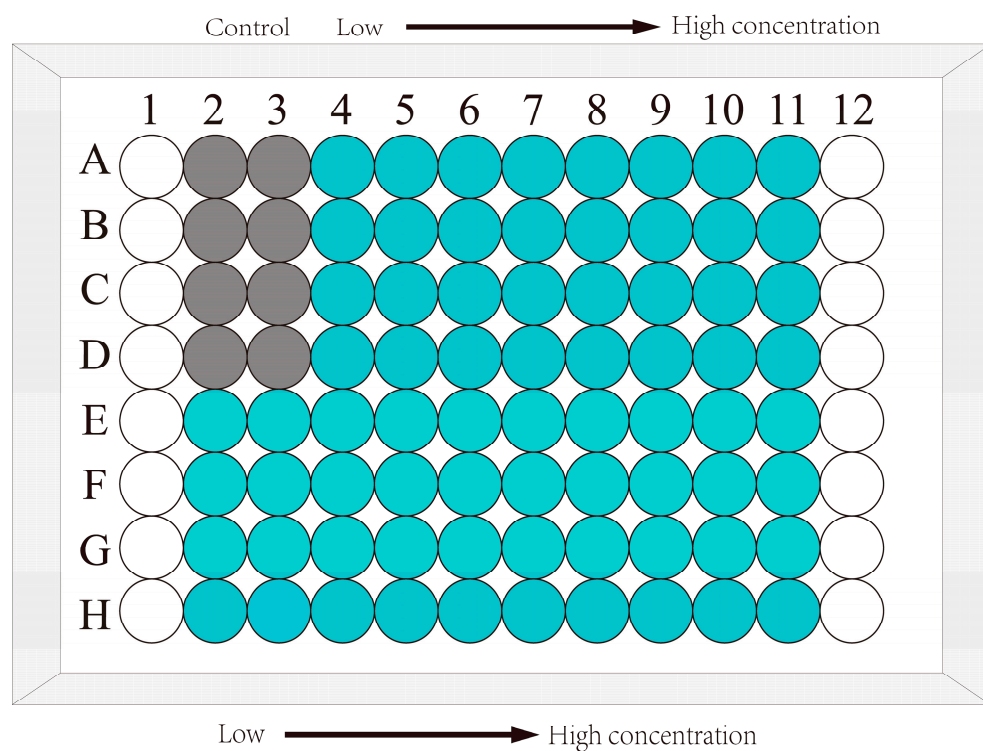


Figure S1. Arrangement of control and test samples in 96-well microplate. Gray solid circles are the control, and the blue solid circles are test samples. Each concentration of sample locates in four wells in same column.

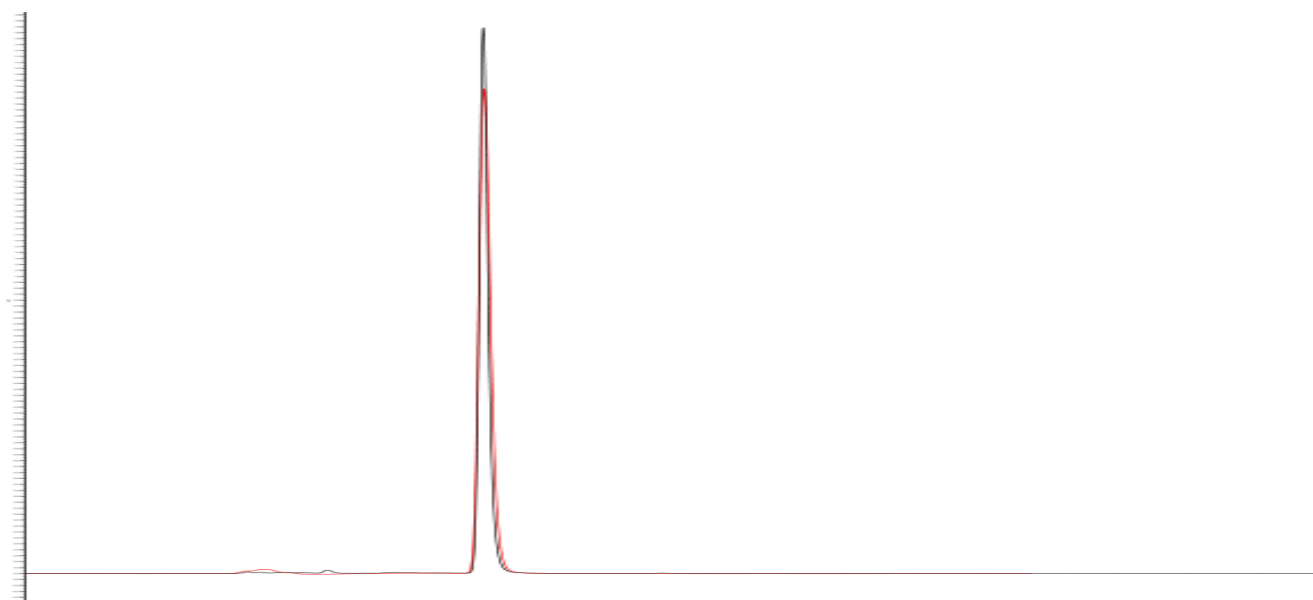


Figure S2. Comparison of aqueous BPA solution and methanol dissolved BPA using HPLC. Black line, methanol dissolved BPA solution. Red line, aqueous BPA solution.

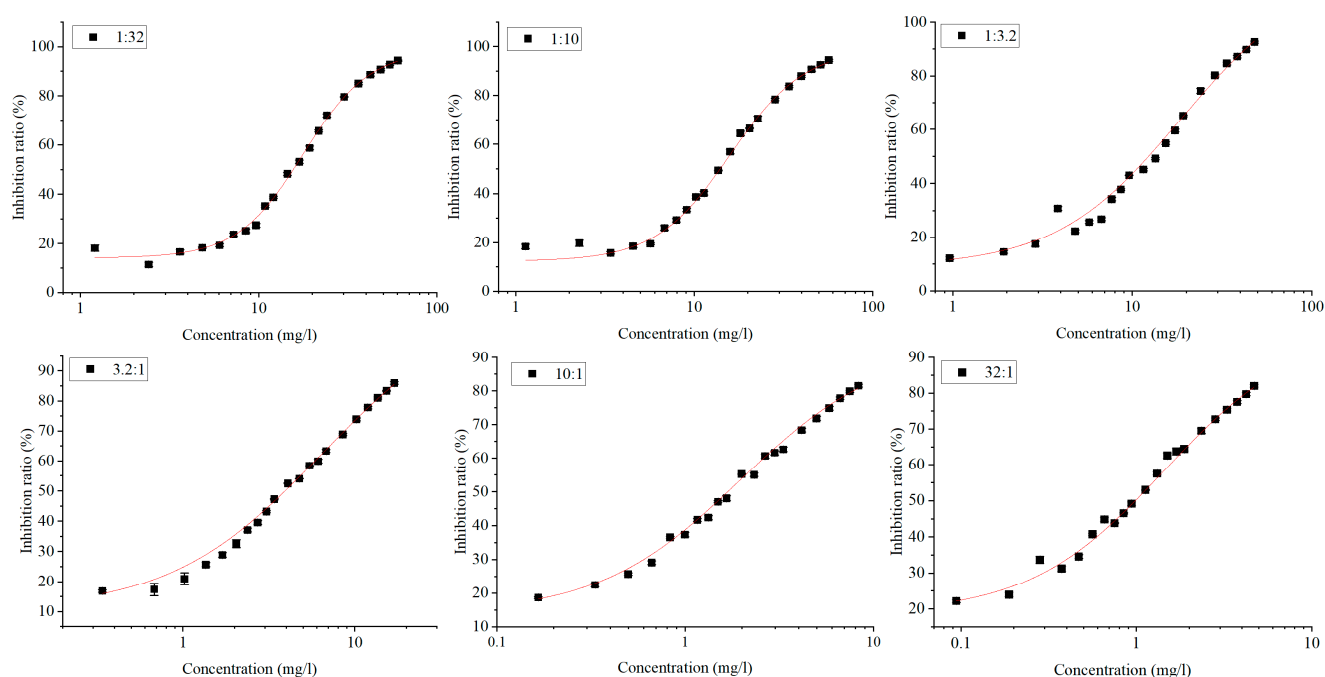


Figure S3. Observed acute mixture toxicity of BPA and Cd at non-equitoxic ratio.

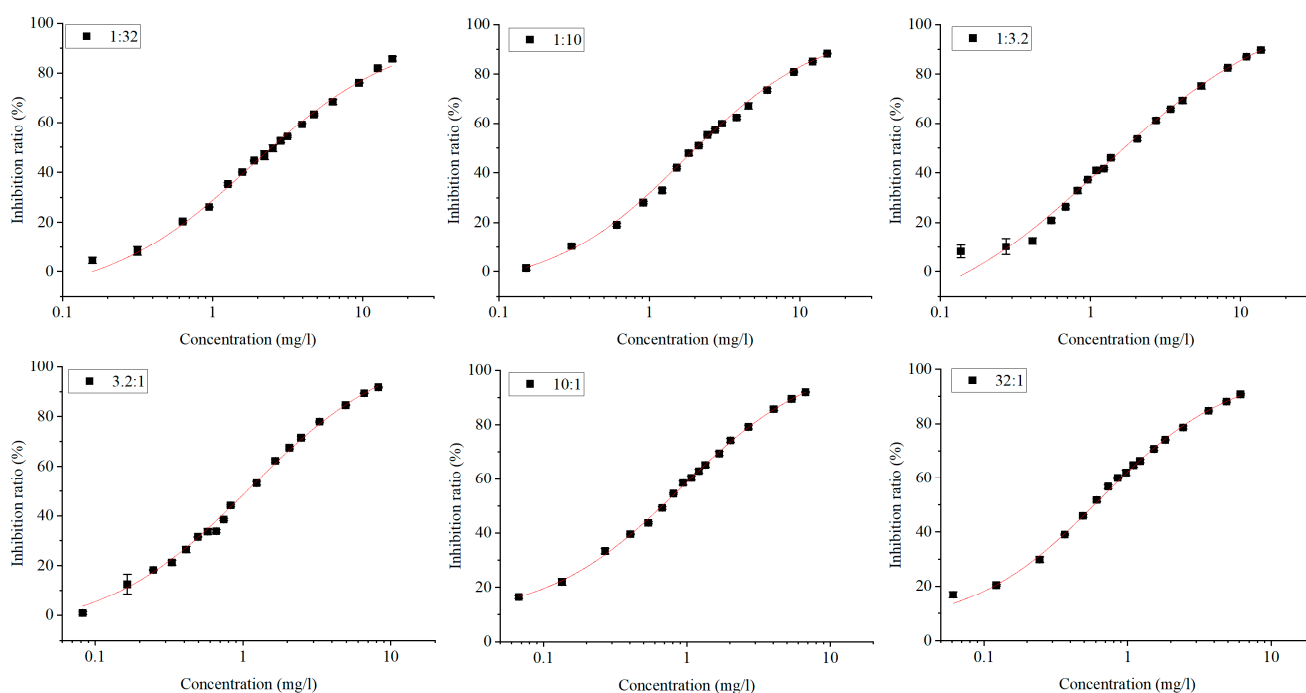


Figure S4. Observed acute mixture toxicity of BPA and As at non-equitoxic ratio.

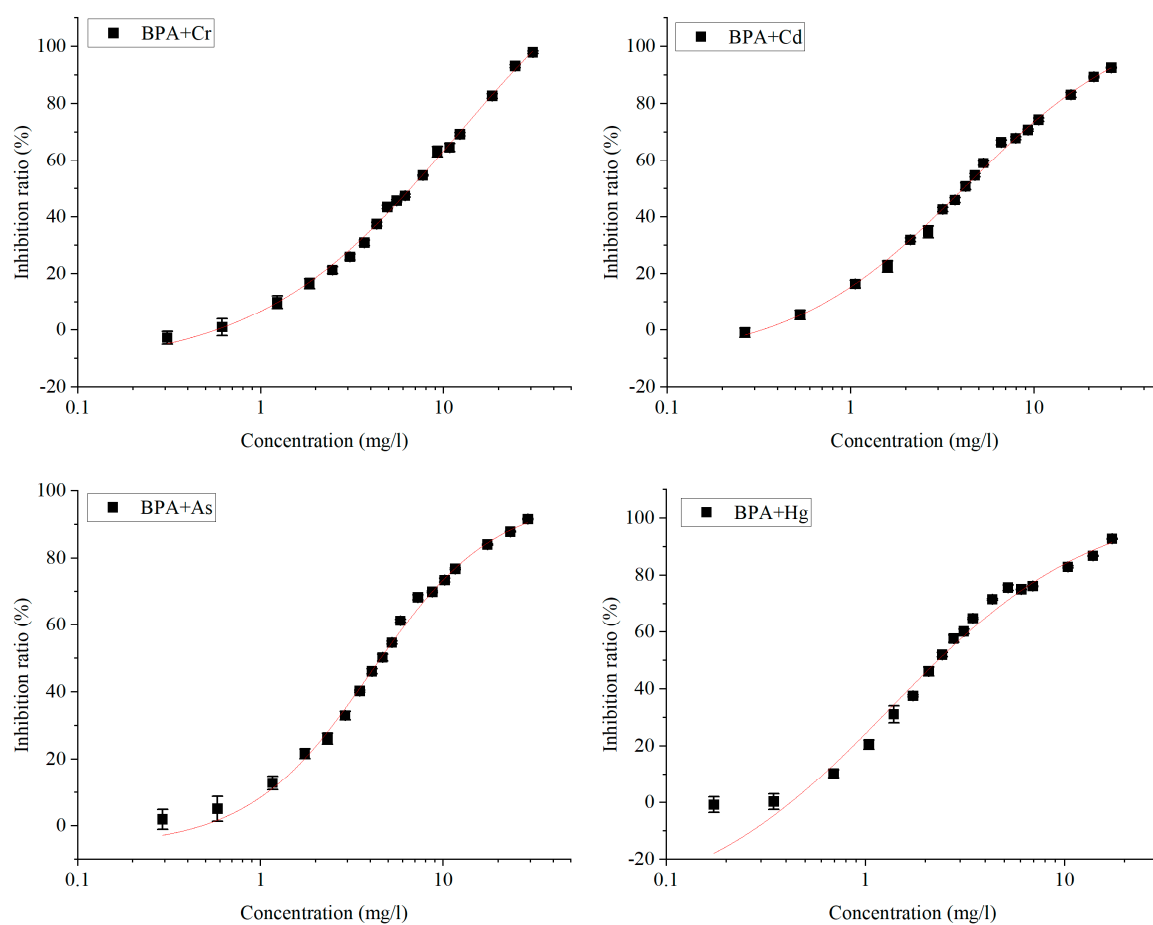


Figure S5. Observed chronic mixture toxicity of BPA and heavy metals at equitoxic ratio.

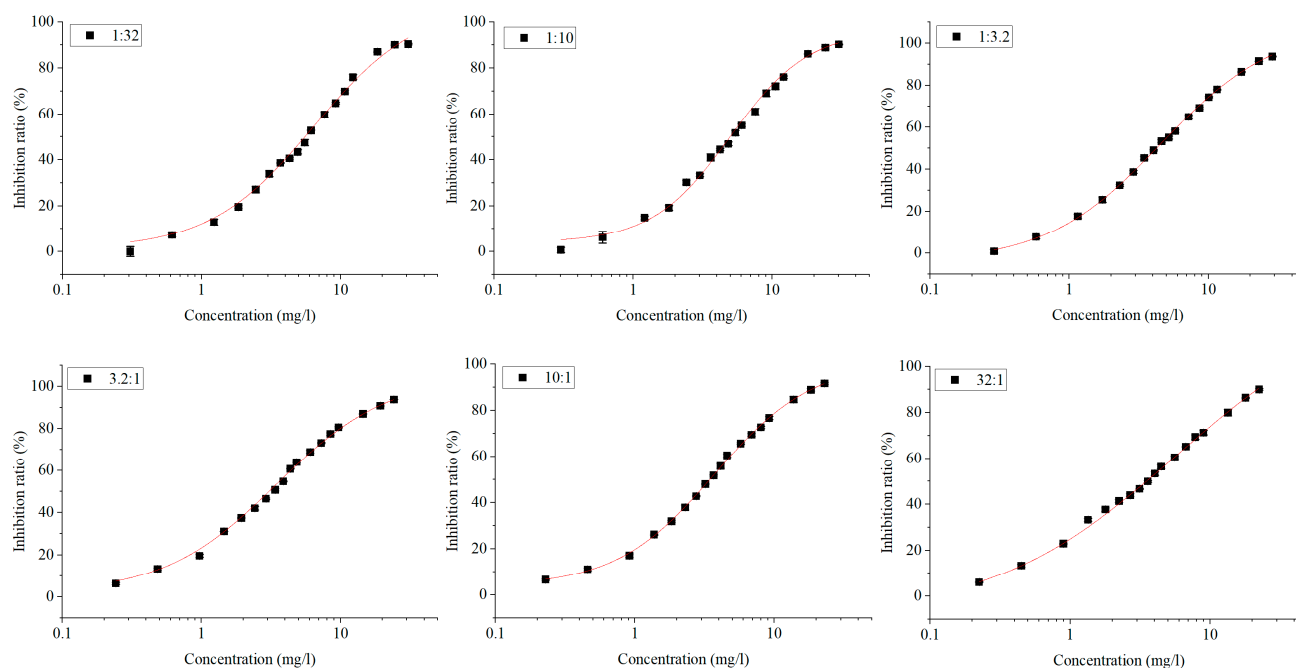


Figure S6. Observed chronic mixture toxicity of BPA and Cd at non-equitoxic ratio.

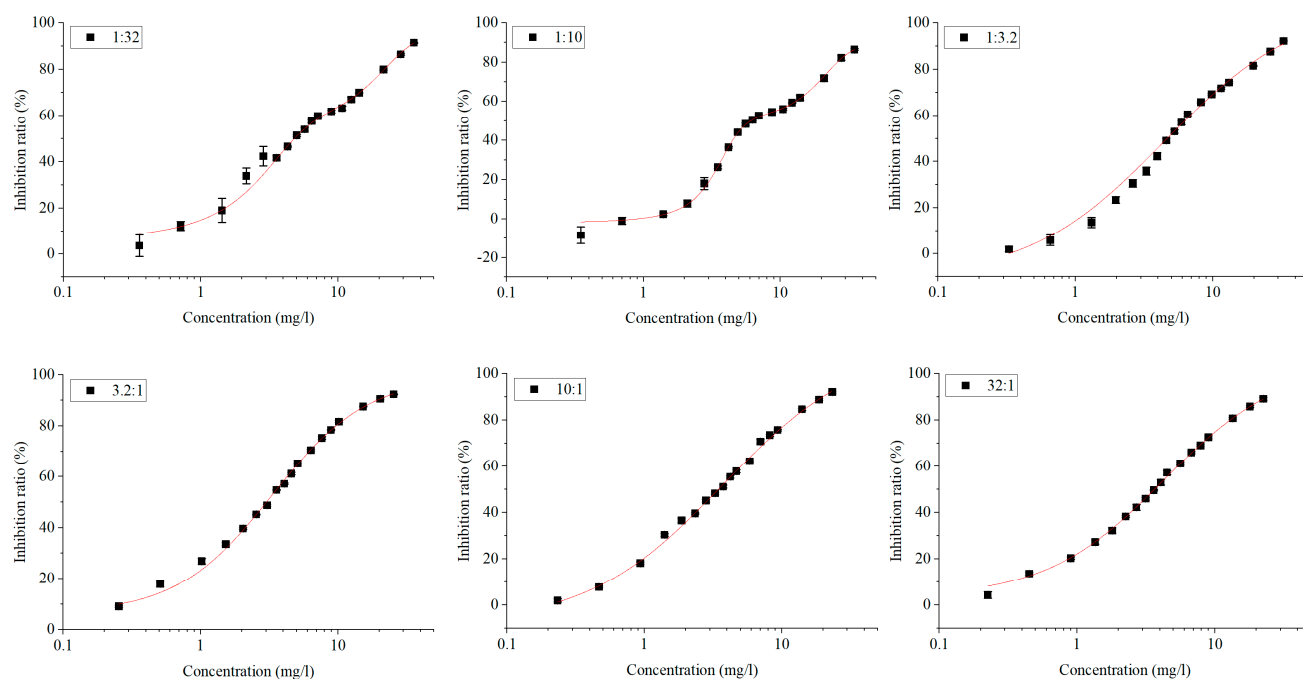


Figure S7. Observed chronic mixture toxicity of BPA and As at non-equitoxic ratio.