

Supporting information

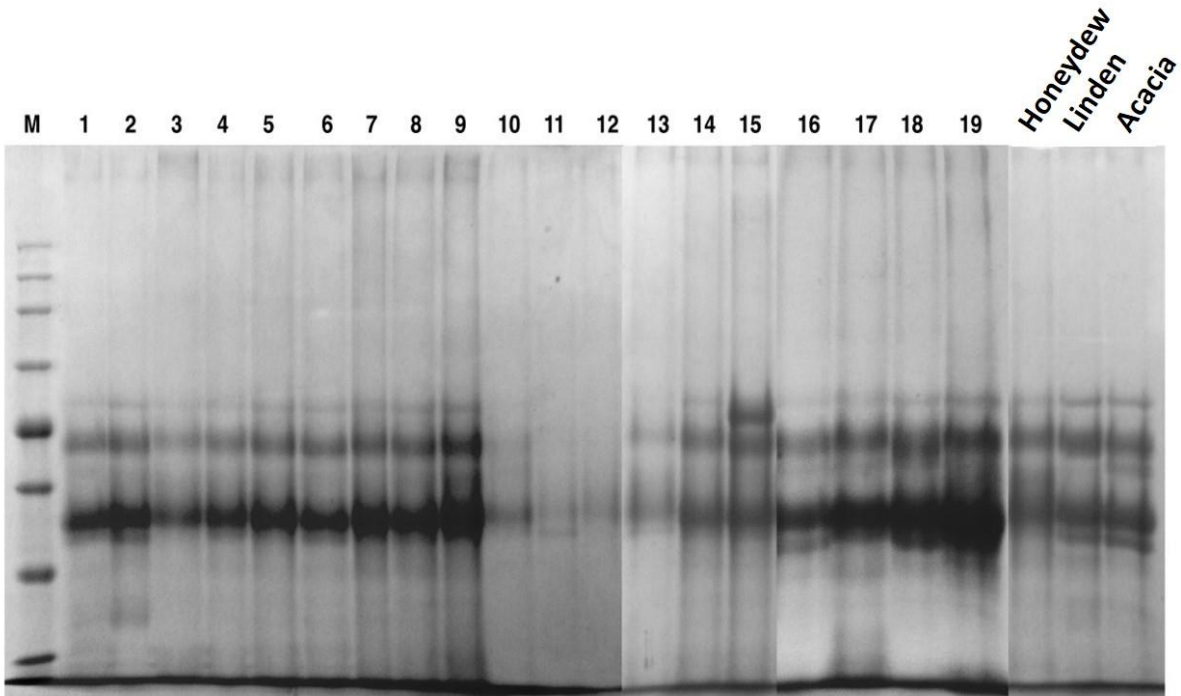


Figure S1. Protein profile of commercial honey samples (n=19) from supermarkets and three samples from local beekeepers. A 15 μ L of diluted honey samples (50% w/w in distilled water) were separated by 12% SDS-PAGE gels and protein content assessed after gel staining with Coomassie Brilliant Blue R-250

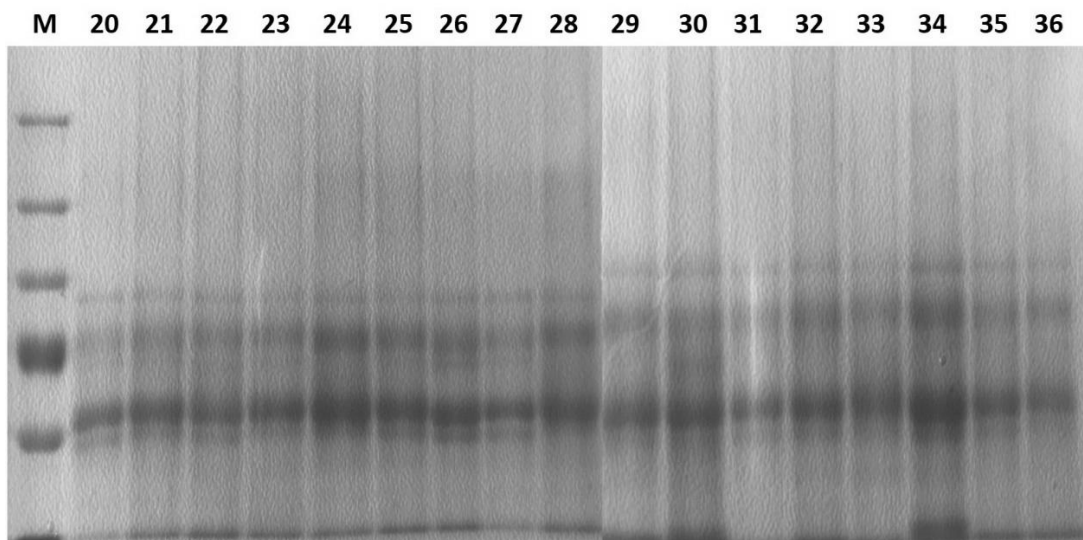


Figure S2. Protein profile of commercial honey samples (n=17) from local food shops. A 15 μ L of diluted honey samples (50% w/w in distilled water) were separated by 12% SDS-PAGE gels and protein content assessed after gel staining with Serva blue.